

# INNER CITY NEWS

innercitynews.com.au

Forever Free

Puzzles & Trivia P14



Naughton's turns 150!  
Photo by John Tadigiri

Naughton's Hotel, a historic landmark in Parkville, is celebrating a milestone 150th anniversary since opening its doors in 1873. Full story on page 5.

## Aircraft noise consultation with East Melbourne residents to be considered under third runway plan

*Airservices Australia says consultation with the East Melbourne about reducing aircraft noise and looking at alternative paths has been put on hold until Melbourne Airport's plan to build a third runway is considered.*

WORDS BY *Brendan Rees*  
PLANNING

The \$1.9 billion north-south parallel runway Major Development Plan (MDP) is an ambitious project that will expand the existing two runways at Melbourne Airport, as annual passenger numbers are expected to grow to about 76 million people by 2042.

Airservices Australia, the government-owned body that provides air traffic control, navigation, and related services in Australia, confirmed it would continue talks with East Melbourne residents – who have been lobbying for the past decade against aircraft noise – as soon as the third runway plan was considered; an announcement welcomed by residents' association, the East Melbourne Group (EMG).

"Once finalised, Airservices will assess the implications of the final MDP on EMG's proposed flight path changes and commence engagement with communities potentially affected by the EMG proposals," an Airservices Australia spokesperson said.

The Federal Infrastructure and Transport Minister Catherine King, who gave the green light to the airport's 2022 Master Plan, acknowledged the community's concerns of aircraft noise, and had directed Airservices Australia to "revisit" the

flight paths proposed by the EMG.

In a letter (dated in March this year) to the Federal Melbourne Greens MP Adam Bandt, who has long advocated on behalf of residents, Ms King said the MDP identified two primary flight path options that were discussed with the community for the proposed third runway.

"Pending its consideration, the ultimately agreed flight paths for the MDP will likely impact on the feasibility of alternative flight paths that have been suggested by the community for the East Melbourne area," she wrote.

"Following my consideration of this MDP, and the longer-term certainty this will provide, I will direct Airservices to revisit these flight paths."

The EMG's planning convenor Greg Bisinella said their group was pleased that the Minister had "seen fit to direct Airservices Australia to continue to work on alternative flight paths for the large commercial jets flying over East Melbourne and adjoining residential areas" while also accepting that the flight paths were changed in 2014, which had continued to impact residents.

"The EMG sees this as a positive step to redress the inadequate process that was undertaken in 2014 and

*Continued on page 4.*

## Caitlin Dullard steps in as La Mama's artistic director

*Caitlin Dullard is ready to throw her "head and heart" into her new position as La Mama's CEO and artistic director following the departure of Liz Jones from the role after 50 years.*

WORDS BY *Kaylah-Joelle Baker*  
ARTS & CULTURE

Speaking with *Inner City News* about her transition into the position, Ms Dullard said, "I am incredibly humbled by the opportunity and believe in La Mama and the power of the arts and the artists we support."

Ms Dullard has shared the role of CEO with Ms Jones since February 2019, and her commitment to the theatre and the community has been noticeable since the moment she first stepped into the space in 2006.

"I was quite young and studying theatre at university when I went to a La Mama matinee and it was unlike anything I had seen before," Ms Dullard said.

"It wasn't that it was wonderful or high art, but it spoke to me for its point of difference and rawness, and I had immediate adoration for the artistic team who put their heart on their sleeves. It was infectious and that's the magic of the space."

Ms Dullard first started out as a La Mama volunteer for a few hours a week, before moving to Front of House, then to Mobile (touring) and Access (community) Producer in 2010, and then Company Manager and Creative Producer in 2014.

*Continued on page 6.*

LYGON LOCAL, PAGE 03

### A Making a bit of Foss about new distillery



PLANNING, PAGE 04

### B Student tower approved for Carlton



EVENTS, PAGE 06

### C Locals celebrate Harmony Day



BUSINESS, PAGE 10

### D The new venue shining a light on local makers



Here at The Grey Smith Coffee And Wine Bar we love our sports!

As part of kicking-off the footy season we invite our guests to catch a great 15% discount **any day** from our menu when dining in with 2 or more people\*

126 Wellington Parade, East Melbourne (next to Jolimont station)



**CONTACT**  
Suite 208, 198 Harbour Esplanade  
Docklands 3008  
innercitynews.com.au  
Tel: 8689 7980

**EDITOR**  
Sean Car

**PUBLISHER**  
Hyperlocal News Pty Ltd  
ABN: 57 623 558 725

**ADVERTISING**  
Hyper-local print works for advertisers in our digital world because local people are interested in local news. To sell to the Inner City community, contact Jack Hayes on 0401 031 236 or jack@hyperlocalnews.com.au

Reader contributions are welcome. Send letters, articles and images to: brendan@hyperlocalnews.com.au

The deadline for the May edition is April 27.

**SOCIAL MEDIA**  
Follow us on Twitter @InnerCity\_News

Like us on Facebook innercitynewsmelbourne

Follow us on Instagram @innercity\_news

Opinions expressed by contributors are not necessarily shared by the publisher.

hyperlocalnews.com.au  
admin@hyperlocalnews.com.au



## Heritage *does* matter

*A new book, launched at the Melbourne Town Hall recently, highlights the effectiveness of communities when they work together to preserve the amenity of their suburb.*

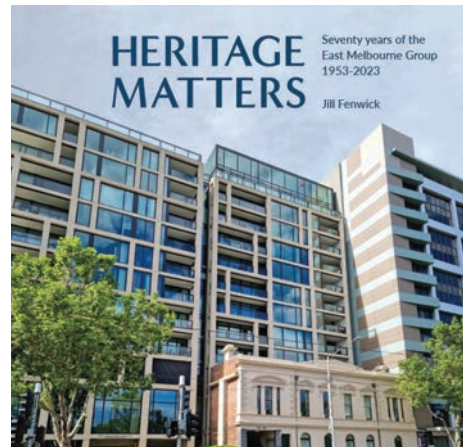
*Heritage Matters: Seventy Years of the East Melbourne Group, 1953-2023* was written by Jill Fenwick OAM, a long-time resident of East Melbourne, former president of the East Melbourne Historical Society for 13 years, and a life member of the East Melbourne Group (EMG).

The book details the extent to which the community of East Melbourne and Jolimont have had to fight to preserve the essence of their edge-of-CBD suburb.

The EMG began in 1953 when local residents noticed that City of Melbourne workers were chopping down the mature elm trees that had lined the streets for decades, helping to define the East Melbourne as a desirable residential garden suburb.

The argument was given that removal of the trees would allow more cars to be parked in the streets and would also help to “modernise” the suburb. The residents were outraged at this infringement of their amenity and lack of consultation, and lobbied the council. But their protests took time, and they were only able to preserve one small section of the trees in George St.

Since that time, the residents have grappled with many issues, including the demolition, prior to the *Heritage Act 1974*, of many irreplaceable properties of outstanding heritage value, which gave way for nondescript blocks of flats. The imposition of walls of high-rise buildings was a major challenge in the 1980s,



▲ Jill Fenwick speaks at the launch of *Heritage Matters*.

along with the creeping expansion of several hospitals.

A major intrusion into the liveability of the suburb has been the changes to the operation of the MCG: introduction of Sunday football, the massive amount of parking which has been allowed to churn up and erode the parklands, and “the highest set of stadium lights in the world”. The promise that the lights would be used only 10 times a year was laughable and soon abandoned.

More recently, the introduction of façadism in East Melbourne, as shown so confrontingly on the cover of the book, reveals the money-centric political and market forces shaping the suburb.

This trend for political and market forces to challenge the ethos of this quiet, residential suburb was evidenced most recently when political forces aligned against the community voice to agree to an extension of a restaurant in a small boutique hotel, to a 148-seat public facility with no controls over parking or noise. Fortunately, this was the latest battle won by the EMG.

To a crowded audience, the book was launched by former Chair of the Heritage Council of Victoria Professor Graeme Davison, who remarked that in its 70 years, “the EMG has played a part well out of proportion to its numbers in the wider heritage movement and its history is accordingly of much more than local interest”. Quoting an early president of EMG who stated that “A city without a history is a city without a soul”, Graeme said that the EMG was a pathfinder in heritage territory that had yet to be named and mapped, and has a claim to be Melbourne’s, perhaps Australia’s, first modern urban heritage group.

In Graeme’s words, the EMG’s “concept of heritage was much wider than just architecture. It was determined to conserve their suburb’s distinctive character defined by a subtle combination of height, width, scale, setbacks, streetscape, plantings, even its freedom from noise and artificial light”.

As a former CEO of Heritage Victoria put it, “the EMG must be congratulated for its long-term persistence and ability to strike fear into the heart of politicians, councillors and developers”.

The book retails for \$34.95 and is available from Anchor Books Australia, [anchorbooksaustralia.com.au](http://anchorbooksaustralia.com.au) ●

MAKE IT A

QUEEN VICTORIA MARKET

Easter

OPEN TUE, THU, FRI, SAT & SUN

(excluding Good Friday)

[qvm.com.au/easter](http://qvm.com.au/easter)



# Making a bit of Foss about Carlton's new distillery

LYGON LOCAL

“

209 Lygon St has lived many lives. The bluestone façade and red brick interiors were fondly known to locals for almost 40 years as the home of IL Cantuccio, an old-fashioned Italian diner serving homely food.

”

WORDS BY Jack Hayes  
BUSINESS

Now, new life has been brought back into the old relic, with the opening of Fossey's Distillery Lygon.

From humble beginnings in an unused function space attached to a pub in Mildura, owner and self-confessed "ginnivator" Steve Timmis has grown the Fossey's brand steadily since opening in 2017, building on a foundation of creative, quirky but serious small-batch gins, whiskies, vodkas and rums.

As a household name in the Mallee region, Mr Timmis decided it was time to bring his "Mildura flair to the big smoke."

"It was a bit opportunistic," Mr Timmis said. "There was a place that became available, and I thought it has a nice look and feel, and obviously in a great spot."

"Not really knowing Melbourne that well, but knowing Lygon St had its own brand nationally,

I thought it was a perfect opportunity to bring a little Fossey's outpost to the city."

"It's an opportunity for us to bring the spirit of Mildura to Melbourne and showcase some pretty amazing spirits, which will be distilled right here in Carlton, in our big brand new still, Elsie."

You'll find Elsie, the big copper still, not so discreetly tucked behind the bar at Fossey's Lygon, providing a small peek into the world of hand-crafted, artisanal distilling.

Traditional botanicals make way for natives like lemon myrtle, pepperberry, lavender and cassia, to create their trademark Fossey's Gin Elixir.

Inspired by the warmth of Victoria's north and the flora that grows there, you'll find locally-grown grapes in the Shiraz-infused gins, or the hand-picked salinity of the Old Man Salt Bush.

For the more adventurous, there are flavours like Christmas Pudding, Chilli and, just in time for Easter, a special Hot Cross Bun release with a hint of nutmeg, cinnamon and citrus peel and dried Flame seedless grapes to recreate the taste of buttery hot cross buns in a bottle.

Mr Timmis told *Inner City News* the response from locals intrigued by their new neighbourhood distillery had been incredibly encouraging.

"We are proud to be Australian-owned and showcasing the best Australian produce," he said.

"In addition to our own range of spirits, we've invited half a dozen distilleries to join us, so, we have offerings from places like Timboon, Woombye and the Mornington Peninsula. It's not just us. We want to be a place where you can try these producers, who you probably couldn't have otherwise."

For a bite to eat, Fossey's offers a tapas menu designed to accompany their range of alcohols that includes olives in malt whisky, redgum teriyaki prawn skewers, gin fried chicken and Honey Red Gum Rum chicken wings. ●



For more information:  
[fosseysgin.com.au](http://fosseysgin.com.au)



Lord Mayor Sally Capp with Beverly Caprioli, University Café

## Are you a small business in Melbourne?

Apply now for the Lord Mayor's Small Business Awards – celebrating small businesses and the people behind them.

Categories include:

- Lord Mayor's Small Business Achievement Awards
- Lord Mayor's Small Business of the Year
- Lord Mayor's Small Business Innovation Award

Applications close Friday 28 April.

[melbourne.vic.gov.au/smallbusinessawards](http://melbourne.vic.gov.au/smallbusinessawards)



EVENT PARTNER



## Tree planting season at Princes Park has begun

WORDS BY Kaylah-Joelle Baker  
PHOTOGRAPHY BY Ajay Viswanath  
ENVIRONMENT

City of Melbourne councillors and contractors kicked off the 2023 tree planting season in Princes Park on March 17 with shovels in hand and a new tree in the ground.

The planting of more trees is part of the council's Urban Forest Precinct Plans, which are the implementation guidelines that support the Urban Forest Strategy.

To increase the longevity of Melbourne's urban forest, the council is aiming to plant 3000 trees this year to help achieve a 40 percent canopy cover by 2040.

"Our Urban Forest Strategy will see the city's tree canopy cover reach 40 per cent by 2040," Lord Mayor Sally Capp said.



"To do this, we will continue to plant 3000 trees each year, increase the number of green roofs and vertical greening, and encourage the greening of private land."

There are currently 80,000 council-owned trees in Melbourne, and the council is hopeful that its latest campaign of encouraging Melburnians to think green and join in by planting will help to reach the 2040 goal. ●

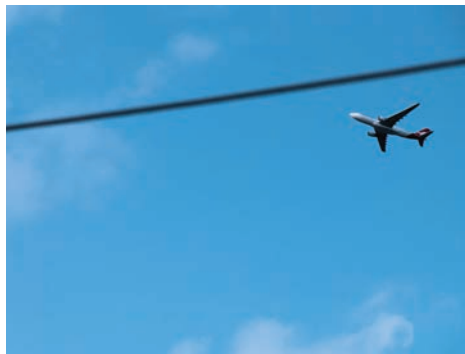


## Easter Services at Church of All Nations

- Palm Sunday (2nd April) – 10.00am with Choir
- Maundy Thursday (6th April) 7.30pm – reflective Tenebrae worship
- Good Friday (7th April) with Choir – 9am - note earlier time
- Easter Sunday (9th April) (Communion Service) – 10am with Choir

180 Palmerston St Carlton phone 9347 7077





## Aircraft noise consultation with East Melbourne residents to be considered under third runway plan

Continued from page 1.

hopes that the outcome will be some amelioration of the noise and health impacts residents have been forced to endure," Mr Bisinella said.

He also added the EMG was still working to achieve similar outcomes for the light aircraft and helicopter noise, "for which the Minister has indicated is a more complex issue".

The City of Melbourne introduced a Fly Neighbourly Agreement in 2016, which applied to helicopters to reduce the impact of aircraft noise with some general conditions applying to all aircraft operating in proximity to Melbourne, however residents maintain the issue was still "intolerable".

Ms King outlined in her letter to Mr Bandt that following an Ombudsman investigation into complaints about flights over East Melbourne, which was finalised on June 10, 2021, Airservices Australia has been in ongoing discussions with the East Melbourne community on potential noise mitigation measures "and options to improve noise outcomes around East Melbourne through flight path modifications".

She said work began in 2018 to potentially alter these flight paths to reduce impacts in East Melbourne was later brought to a stop as Melbourne Airport changed their intended third runway project from east-west orientation to north-south.

According to Melbourne Airport's Master Plan 2022, the third runway, which is slated to open by 2027, is "critical to meet forecast passenger growth while maintaining on-time performance for interstate and international travel" and in turn allow "increase aircraft movements over time".

Ms King's office has been contacted for comment. ●



**Brendan Rees**  
JOURNALIST  
BRENDAN@HYPERLOCALNEWS.COM.AU

# Student accommodation tower approved for Carlton

WORDS BY *Brendan Rees*  
PLANNING

A plan to build a \$68.9 million student accommodation tower in Carlton has been endorsed by the City of Melbourne as it seeks to retain its status as Australia's number one student city.

The 49-storey building, which would consist of 465 beds across 365 rooms at the site of 166-176 Bouverie St and 183-187 Grattan St, was approved unanimously by councillors at their Future Melbourne Committee meeting on March 21.

The project is a joint venture between Journal Student Living, and Canadian-based firm Brookfield Asset Management.

Under the plans, designed by Jackson Clements Burrows Architects, the 150-metre building, (situated next to the University of Melbourne campus) would include three retail tenancies and an open entertainment area on the ground floor.

Indoor communal facilities include a lounge, library, and study spaces on the ground floor, while a gym, games room, laundry, kitchen, and dining spaces would be housed in the basement.

There would also be small study areas on levels one and three, plus a bike storage space for 66 bicycles on the ground floor.

The proposal would see the partial demolition of the building at 166-170 Bouverie St with the rear section removed while the façade would be retained to form part of the new building.

The building would comprise of modules staggered across the tower form and finished

in a "variety of light, grey and bronze colour finishes, and articulated with glazed rebates".

According to a council document, the site is partly affected by heritage overlay with the building at 166-170 Bouverie St graded as "significant" and the building at 183-187 Grattan St as "non-contributory". The adjoining streetscapes are not identified as significant.

Journal Student Living CEO and director Ian Davidoff, whose organisation manages 1400 student accommodation beds in Carlton, addressed the council meeting, saying they had a strong focus and investment in student life and resident engagement.

"The lived experience of our students is vitally important to us. We have a strong focus on building a community among the students, looking after their wellbeing through a variety of physical and mental health supports," he said.

The council's education and innovation portfolio lead Cr Davydd Griffiths welcomed the application at a time Melbourne was enjoying a strong return of international students.

"This part of the city has such a long tradition of having students housed in it," he said.

"We know that the surrounding suburbs and surrounding businesses are excited to see students returning so it's fantastic to see another excellent building being proposed."

"There is so much consideration of what the students' experience is going to be not just in terms of the built form, but in terms of the services and support students will receive," he said.

Cr Rohan Leppert, the deputy portfolio lead for sustainable building and city planning, commended the "extraordinary application" with



▲ An artist's impression of the student accommodation tower in Carlton.

the building being located in the northern part of the city where "we want to make the student experience as enriching as possible".

"We want to make sure that our student housing policy is working as hard as it can to produce outcomes that make Melbourne a great place to live for people who are here for a short period of time or a long period of time."

Cr Leppert also praised the applicant for working closely with the council, which resulted in the application being amended following design concerns raised by the Melbourne Design Review Panel and through objections.

The amended proposal included increased setbacks, a reduced upper parapet height and greater articulation within the building facades as viewed from adjoining streets. ●

## Do you really want that job?

WORDS BY *Rhonda Dredge*  
ARTS & CULTURE

A guy is glaring at you across a table, asking a lot of impertinent questions.

He wants to know why you want to work for the company.

You can't say it's because you "really like paying rent and eating every day".

That's because you're both caught in the "stupid dance" that is the job interview.

A new play will open in April at La Mama for the Melbourne International Comedy Festival that explores this "antiquated and unnecessary process".

James Hazelden is eminently qualified for the position of playwright and director. He's been on both sides of the interview table and still works in an office.

*The Job Interview* takes that experience and turns up the heat, bringing together a manipulative manager who "has swallowed the Kool-Aid for corporate speak and sounds like a mission statement" and a real person who needs a job.

When the 50-minute interview spirals out of control, it is based on James' own experiences and stories he has collected.

In an interview with *Inner City News*, the playwright outlined some of his ideas about the crippling culture of the corporate sector.

Many managers, he said, were promoted because the company didn't want to lose them, but they had no management skills.

"A lot of managers are dreadful, toxic, needy and strange," he said, with some "freeze frozen" since 1992.

Then they get behind the interview table and this is their chance to make it hard for innocent applicants.

In James' own worst experience, going for a job with a local council, the interviewer asked what he would do if he didn't know something.

"I said I knew the guy in the job, and I would ask him. 'Yeah, but what else?' he asked. I said I would check the internet. 'Yeah, but what else?' he asked again. Eventually I said I would reach out to other people."

"He looked at me and said, 'Well we got there in the end.' The idea of working for that guy made me ill."

James said there was no need to humiliate interviewees or figure out ways to rev them up in an interview. "It would be nice to just be nice."

*The Job Interview* is James' fifth play at La Mama. He got his big break in 2016 after



▲ James Hazelden getting into character for his new play.

winning a Short & Sweet award and the theatre backed him for a new work at that year's Comedy Festival.

"That gave me confidence," he said. "The play went well, and I've done it every year. I felt so supported."

In *The Job Interview*, James claims to have created his most evil character in Alex, the interviewer who doesn't just stop at psych testing.

*The Job Interview*, La Mama HQ, April 11 to 16. ●

KADAMPA MEDITATION CENTRE MELBOURNE.

### Kadampa Meditation Centre Melbourne

We've run meditation classes in Melbourne for almost 20 years. Our daily classes and workshops are taught by qualified Buddhist teachers. So much of the stress and tension we experience comes from our mind and can be alleviated by meditation. Enjoy quiet and stillness in our modern-day oasis in the heart of the CBD and let your usual problems fall away.

📍 79/81 Franklin Street, Melbourne

📷 @meditateinmelbourne

☎ 0455 205 589

SHOP LOCAL

Supporting business

Construction partner:

CYP-B500338

# Parkville's Naughtons Hotel celebrates 150 years as a community institution

*Naughtons Hotel, a historic landmark in Parkville, is celebrating a milestone 150th anniversary since opening its doors in 1873.*

WORDS BY *Brendan Rees*  
BUSINESS

The iconic Royal Parade venue at the corner of Morrah St, which is known for its cosy atmosphere and friendly staff, has been a beloved part of the community for decades, and a popular destination for locals and tourists alike.

Originally established as the Port Phillip Agricultural Hotel with a corner bar and stables and a small vegetable garden out the back – as it was a popular route to the local livestock markets at the northern end of the city, Naughton's has evolved to become an institution.

Today, it has notched up a remarkable 150 years of serving the community, a milestone celebrated on March 14.

"It's pretty special, I don't know that there are too many pubs in Melbourne that have been continuously trading for 150 years and we just feel very lucky to be a part of this place; to be the current custodians and to be serving the community," Naughton's Hotel joint-owner Ryan Moses said.



The hotel has been a favourite for many over the decades, including Carlton Blues fans who remember fondly of the time Carlton great Stephen Kernahan attended the venue and famously belted out *Stand By Your Man* on the Monday after the 1987 Grand Final.

Mr Moses and his team have been running the hotel since 2016, and overseeing the building's third major renovation in its history while still retaining its charm and offering a family-friendly environment.

"It's very much about traditional techniques, so we bake bread, we make our own pasta, we

butcher our meat, we make cheese, we do things from scratch; it's that kind of idea of quality and handmade," Mr Moses said, adding all fresh produce was sourced from Australian farmers.

Of course, there are beers on tap with a variety of Victorian craft brews, and Carlton Draught for the no-fuss drinker.

The hotel's current management has re-positioned the building into an upmarket food venue; combining the bar and bottle shop; adding a function space; and transforming the upstairs hotel rooms into five-star luxury accommodation spaces to keep up with the times.



Mr Moses said plans to celebrate the hotel's 150th anniversary was still being prepared, but a memorable event would likely be held in October in conjunction with the Parkville Association.

Deputy Lord Mayor Nicholas Reece, a local patron of the hotel, said "there is something very special about Naughton's".

"When I think of the quintessential Melbourne pub I think of Naughton's, a charming heritage building, the cosy interior, the modern pub fare, all located among the beautiful surrounds of Royal Parade and Parkville," he said.

"For 150 years it has been a favourite watering hole for students, academics, medical workers, Parkville locals and all Melburnians, long may it continue. In recent times it has gone through a bit of a refresh, and I am delighted to say it continues to go from strength to strength. Three cheers for Naughton's."

Mr Reece added, "I can't think of a venue that captures the Melbourne heritage pub mystique better than Naughton's."

Naughton's Hotel is recognised as one the oldest hotels in Melbourne. Until 2006, only two families had ever owned the pub.

Charles Reis, the grandson of JB Naughton, who bought the pub in 1924, said he lived in the hotel as a child, and often told people, "that I learnt to pour a beer before I learnt to ride a bike".

Mr Reis has kept a record of the hotel's history as well as a collection of photos which he generously shared with *Inner City News*. ●

# E-scooters moved away from East Melbourne corner after being "stacked" onto footpath

WORDS BY *Brendan Rees*  
TRANSPORT

E-scooters have been excluded from parking at an East Melbourne intersection after concerns were raised of the devices being "stacked" along a footpath during an AFL night match at the MCG.

Residents had reported several e-scooters overflowing onto the footpath at the corner of Jolimont Terrace and Jolimont St after footy fans attended a Friday night season-opening clash between Collingwood and Geelong on March 17.

Global electric scooter company Lime, which is running a 12-month trial of e-scooters in the City of Melbourne, said it was made aware of the issue and had implemented a "no parking zone" to "prevent this from occurring again".

"Based on the parking on Saturday and Sunday's match (of the opening round), this issue has now been resolved and parking has moved away from this corner. We have also moved to designated parking zones in this area to help control parking when there is an influx of visitors to the MCG," a statement from Lime said.

The no parking zone will be built into Lime's app, and alert riders when they are entering the corner of Jolimont Terrace and Jolimont St.

"If a rider attempts to complete their trip outside the parking zone, a pop-up message will appear, informing them of the parking requirements and prompting them to move the vehicle to a designated parking location," the statement said, adding there were 13 designated parking locations surrounding the area, which avoided any obstruction of footpaths.

"Until the rider moves the vehicle to a parking zone, the rider will not be able to end their trip, providing guidance to ensure parking compliance success."

In accordance with the trial rules, e-scooters must not be ridden on footpaths and instead only on bicycle lanes, shared paths, and lower-speed roads (up to 50km/h).

The no parking zone measure was welcomed by residents and the East Melbourne Group (EMG), the local residents' group, with the issue resolved within 24 hours.

"Recently we were made aware of the 'stacking' of scooters on footpaths in Jolimont prior to the AFL game between Geelong and Collingwood. When made aware of this careless and dangerous parking of scooters on the footpaths, blocking pedestrians, we immediately contacted the providers and had the matter rectified," the EMG's planning convenor Greg Bisinella said.

Mr Bisinella noted the EMG had been supportive of the e-scooter trial being run

by Neuron and Lime, which "have conducted themselves in a mostly responsible manner".

"However, at times, customers of these companies have been acting unlawfully and somewhat recklessly. We have all witnessed dangerous riding on footpaths, accidents, failing to wear helmets, and inappropriate parking of scooters," he said.

"We would like to see more adequate parking facilities for scooter made available at the MCG and a police presence pre and post major events at the MCG to ensure rider compliance."

Victoria Walks executive officer Ben Rossiter said there were still many problems with the current e-scooter trial with footpaths in general still made to "feel much less safe for many in our community".

"One of the e-scooter trial's fundamental flaws is that it allows and actively encourages parking on footpaths, meaning most trips start or end with illegal footpath riding," he said.

"There are many people who rely on walking to get places in Melbourne, including older adults, people with vision impairment and parents and carers with young children. Everyone has a right to feel safe in the city."

Lime said when parking, riders should park to the side of the footpaths.

"Riders should not park in the middle of footpaths, cycleways or on the road in a way that would hinder pedestrians. We continue to



▲ E-scooters parked at the corner of Jolimont Terrace and Jolimont St.

educate and audit our riders' parking to ensure that they are doing so appropriately," it said.

"Lime continues to work with riders to ensure parking compliance increases and is looking to expand designated parking zones, which is a key goal we share with the city and other e-scooter operators. We continue to make progress and are always pushing for further change and innovation."

Victoria Walks reported two incidents in recent months of pedestrians being seriously hurt, however this did not occur within the City of Melbourne.

One woman, 57, of Abbotsford, suffered a hairline fracture after attempting to move a hire e scooter out of the way, while another woman, 59, broke her wrist after she tripped over an e-scooter parked over a Brunswick tram stop. ●

Proudly representing the community in inner Melbourne



**Evan MULHOLLAND MP**  
MEMBER FOR NORTHERN METROPOLITAN REGION

Unit 10, 2 Graystone Court Epping Vic 3076  
03 9651 8242 | [evan.mulholland@parliament.vic.gov.au](mailto:evan.mulholland@parliament.vic.gov.au)  
[EvanMulholland.com.au](http://EvanMulholland.com.au) | [EvanMulhollandMP](https://www.facebook.com/EvanMulhollandMP)  
[@evmulholland](https://twitter.com/evmulholland)



Authorised by Evan Mulholland MP, Member for Northern Metropolitan Region, Unit 10, 2 Graystone Court Epping Vic 3076. Funded from Parliamentary Budget.

# Caitlin Dullard steps in as La Mama's artistic director

*Continued from page 1.*

She then moved to the role of co-CEO mere months before La Mama's highly-reported fire, and continued to show resilience through some of the theatre's toughest times; from the fire, to the pandemic and a loss of funding.

While it was a tough time, Ms Dullard only has positive things to share about the theatre and its importance in Carlton.

"I love working with the artists at La Mama, I love the community connection, and I love the raw intimate space and the extraordinary environment of people and artwork ... it's such an exciting and eclectic space full of opportunity and it's that diversity that really excites me," she said.

"It's a really supportive and invested community, and people's hearts are really in it. I am really excited and after working with Liz for a long time and watching and learning from her, I feel ready to go."

As well as having a strong presence in the space and demonstrating a high-level of commitment to La Mama, Ms Dullard also has an impressive presence and background in community arts – all of which she credits to helping her gain the role.

"I figure I am in the role because of my history and that is really coming from a community spirited vision, so the work I have done is really about responding to the community – it's what I have studied, what I have worked in, and what I believe in," she said.

"Because I have been around for such a long time, I am very attuned to what the needs of the artist are, and the changing needs, and really my approach will be to do what we have always done and that is to support artists and react to artists' needs, and be a haven and support network for them."

Ms Dullard holds a Masters of Teaching (English and Drama), a Post Graduate Diploma of Arts (Theatre), a Bachelor of Arts (Drama and Literature), and Post-Graduate Certificate of Arts and Community Engagement at VCA. ●



*Kaylah-Joelle Baker*  
JOURNALIST  
KAYLAH@HYPERLOCALNEWS.COM.AU



# Locals celebrate Harmony Day

“  
Around 700 people converged on Carlton Primary School on March 18 to enjoy a range of activities, performances and delicious foods as part of Carlton Harmony Day celebrations.”



### EVENTS

Locals defied the heat to enjoy the huge variety of fun, food and music on offer, with Lord Mayor Sally Capp among those in attendance.

Led by the Carlton Neighbourhood Learning Centre, the free annual event is the result of 10 organisations within the Carlton Community Network joining forces with the support of 24 University of Melbourne Executive Master of Arts students.

Enjoy some photos from the event by *Inner City News* photographer Ajay Viswanath. ●



## ARE YOU A RENTER?

Victoria is experiencing a rental crisis. Rent prices are soaring and the number of homes available to rent is plummeting.

As your state MP, I'm fighting to make renting fairer and I need your help. Please scan the QR code and tell me about your renting experience.

ELLEN SANDELL

(03) 9328 4637  
office@ellensandell.com  
146 Peel Street  
North Melbourne VIC 3051

THE GREENS

Authorised by E. Sandell, 146 Peel St, North Melbourne 3051

# OUR BIG GREEN CITY HOW WE'RE TURNING GREY TO GREEN

Melbourne is a city of green possibilities - green roofs, green laneways, more trees, more plants and more green space.

**At the City of Melbourne we're passionate about turning grey to green and making Melbourne one of the greenest cities in the world in which to live, visit and do business.**

We've been working hard for 10 years to create a big, green city.

We were one of the first cities in the world to launch our Urban Forest Strategy in 2012, now we're half-way through.

Did you know that over the past decade we've planted more than 47,000 trees?

And that our urban forest is made up of more than 78,000 public trees across the municipality?

Not only is a healthy urban forest vital for the wellbeing of our community, trees help cool the city and help mitigate against the impacts of climate change.

So we're planting a diverse range of species, such as the Chinese Parasol Tree (*Firmiana simplex*) and Pau Ferro (*Libidibia ferrea*), to improve the resilience of our urban forest.

With all the extra trees, we have a canopy cover of more than 25 per cent,

so we're well on our way to achieving our goal of 40 per cent canopy cover by 2040 and a greener, cooler city.

Our Urban Forest Strategy guides our work and we continue to seek community feedback on important issues like our Urban Forest Precinct Plans, tree maintenance and water management.

We want Melburnians to be a driving part of our city's greening efforts.

We already have more than 700 Citizen Foresters who help collect data about the urban forest.

Join us on our campaign to continue to grow Our Big Green City.

Plant a plant. Take a photo to share on social media using [#OurBigGreenCity](#)

Join us at our upcoming community workshops, read more about our Urban Forest Precinct Plans or let us know your thoughts via our online survey at [participate.melbourne.vic.gov.au/urban-forest](https://participate.melbourne.vic.gov.au/urban-forest)

Learn more about what we're doing to see Our Big Green City thrive in this special feature.

**#OurBigGreenCity**

ADVERTISEMENT  
Your City of Melbourne community update

# GREENING THE CITY FROM THE GROUND UP

## We're on a mission to turn more grey spaces to green.

While Melburnians have embraced green infrastructure, with green roofs, walls and facades sprouting across the city, there's still so much more we can do to improve new buildings or retrofit.

The possibilities for city greening are the focus of our Canopy Green Roof Forum, a City of Melbourne initiative that showcases the best urban green infrastructure and city greening projects, strategies and initiatives.

There are lots of great urban greening projects to learn from and knowledge that can be shared.

Our Canopy Green Roof Forum aims to showcase to building owners, tenants and community members how they can easily green their rooftops, balconies, walls and facades with lush green plants.

Green infrastructure is vital for cities, just as important as roads and public transport to the health and wellbeing of the community, providing more vegetation and green spaces in a dense urban environment.

The visual appeal and the myriad ways of greening and cooling the city all contribute to making our urban environment much more desirable.

Plants and trees provide clean air, clean water and increase our resilience to the impacts of climate change.

To keep up-to-date with future canopy forum events or subscribe to our newsletter visit [melbourne.vic.gov.au/canopyforum](https://melbourne.vic.gov.au/canopyforum)



Councillor Rohan Leppert plants the first of 3000 trees for 2023 with David Callow and Matthew Forster



## Fall in love with our leafy laneways

We've transformed some of Melbourne's iconic laneways into lush green spaces for everyone to enjoy.

Greening projects are an important part of the work we do to adapt to climate change and cool the city.



Visit Guildford Lane to experience urban tranquility

Here are four leafy laneways to explore.

### Guildford Lane

Wander down this quirky laneway between Queen and Sutherland streets to spot greenery flourishing in pots and window boxes, and climbing up the buildings' drain pipes.

### Meyers Place

A striking green wall with 80 species of plants is the jewel of this laneway between Bourke and Little Collins streets. Pause to enjoy the contrast between vibrant greenery and the towering metallic skyline beyond.

### Coromandel Place

Stunning Boston ivy against historic red brick makes this laneway off Little Collins Street extra charming.

### Katherine Place

This foodie precinct near Melbourne Aquarium has turned over a new leaf, now boasting street trees, gardens and lush greenery in planter boxes and pots.

Our Green Your Laneway program was the first of its kind in Australia when it launched in 2017.

Each laneway trialed different greening approaches.

After five years of growth, we've evaluated the success of the laneways and identified the best ways to encourage more community-led greening.

We have established incentives and opportunities for the community to green their laneways effectively, including the Greening Melbourne permit system and through the Green Your Laneway stream of the Urban Forest Fund.

Learn how you can green your laneway at [melbourne.vic.gov.au/greenlaneways](https://melbourne.vic.gov.au/greenlaneways)



## HELP US GO GREEN

Help us plan the future of tree planting in your neighbourhood.

Join us at our community workshops to learn more about our Urban Forest Precinct Plans:

**1 April** - South Yarra, St Martins Youth Arts Centre, 10am - 2pm

**29 April** - CBD, Zinc, Federation Square, 10am - 2pm

**13 May** - Carlton, Melbourne Museum, 10am - 2pm

For more information and to register your interest visit [participate.melbourne.vic.gov.au/urban-forest](https://participate.melbourne.vic.gov.au/urban-forest)

## KEEP IN TOUCH

To stay connected with all the latest news from the City of Melbourne, follow us on social media and subscribe to *Melbourne News* at

[news.melbourne.vic.gov.au](https://news.melbourne.vic.gov.au)

## Connect with us

[/cityofmelbourne](https://www.facebook.com/cityofmelbourne)  
[@cityofmelbourne](https://www.instagram.com/cityofmelbourne)  
[@cityofmelbourne](https://www.twitter.com/cityofmelbourne)





ADVERTISEMENT  
Your City of Melbourne community update

## HONOUR A HUGGABLE TREE

### Learn about our Exceptional Tree Register and how you can protect our urban forest for future generations.

We've just added 108 special trees to the Exceptional Tree Register, which means a total of 268 trees are now protected from being removed or significantly pruned.

These trees are on privately owned or managed land and include those of outstanding size, old age, outstanding habitat value, Aboriginal association, curious growth form, significant environmental services, among other exceptional criteria.

Trees are nominated by the community and then evaluated by an expert panel.

You can nominate any tree on private land within the City of Melbourne. This could be trees in private backyards, residential communal gardens, schools and universities - we even have exceptional trees at some of our favourite places to visit like Melbourne Zoo, Melbourne Showgrounds, Melbourne Museum and Yarra Park.

Listed trees are protected under the Melbourne Planning Scheme and a permit is needed to remove them or to undertake works that might affect their health or condition.

Next time you're out and about, check out these exceptional trees:

### Tree 176 River Red Gum (*Eucalyptus camaldulensis*)

This tree in Yarra Park is a living Scarred tree with Aboriginal significance and is likely to be about 300 years old. The scar on this River Red Gum was created when the Wurundjeri Woi-wurrung peoples removed bark to make canoes, shields, food and water containers, string, baby carriers and other items.

### Tree 170 Port Jackson Fig (*Ficus rubiginosa*)

Attractive for its curious growth form, this Port Jackson Fig is perched atop a stone wall at RMIT University with long aerial roots draped down metres to the ground.

To see which trees made the list or more information about our Exceptional Tree Register and nomination process visit [participate.melbourne.vic.gov.au/amendment-c379](https://participate.melbourne.vic.gov.au/amendment-c379)



Our Exceptional Tree Register is designed to protect important green assets

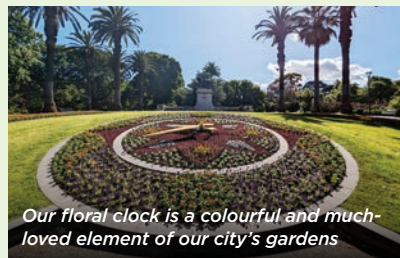
## KEEPING OUR PARKS CLEAN AND GREEN

Melbourne's open spaces range from the major parks and gardens that define our city with classic 19th century heritage features and majestic tree-lined avenues; to the 170-hectare Royal Park with its unique bushland landscape and wetlands habitat, as well as smaller neighbourhood and local reserves.

With a network of some 480 hectares of internationally acclaimed parks and gardens, there is the perfect patch of green space to suit everyone.

To keep our park assets clean and green, we invest \$6.5 million in our Annual Park Renewals Program.

This includes everything from renewing garden beds in iconic parks like Fitzroy and Carlton gardens to irrigation to keep our lawns green in summer. As well as updating and refreshing public toilets to improve user experience.



Our floral clock is a colourful and much-loved element of our city's gardens

## BIOBLITZ CITY NATURE CHALLENGE

### Love getting up close to nature? Then we want you.

Help us discover and document the unique animals, plants and fungi that call Melbourne home.

We're documenting our city's plants and wildlife as part of the City

Nature Challenge, an annual global citizen science bioblitz event.

Join expert researchers, local community groups, families and students to unearth our creature secrets from Friday 28 April to Monday 1 May.

The bioblitz will provide us with a snapshot of the biodiversity in our neighbourhoods, and provide the community opportunities to help survey city biodiversity and increase connection to nature.



Help us survey our city's biodiversity at our BioBlitz events. Photo credit: Stuart Riley.

Sign up at [participate.melbourne.vic.gov.au/bioblitz](https://participate.melbourne.vic.gov.au/bioblitz)

## Nuturing our nature

### Cities are important places for biodiversity. They are home to a large number of species and considered 'hotspots' for threatened species.

Melbourne is a biodiverse region with 239 species of birds, 12 species

of reptiles, 18 species of mammals, seven species of frogs, more than 1500 species of insects, and 31 species of fish recorded in the past 20 years.

Cities around the world are developing greening initiatives to improve and protect nature in the urban environment.

Here in Melbourne, we recognise our responsibility to play an active role in protecting and enhancing nature in our city.

We're half way through our Nature in the City Strategy, a program to create healthy ecosystems and thriving biodiversity in our neighbourhoods.

From the soil with its underground fungi to the plants and animals, including insects, birds, mammals and frogs, our Nature in the City Strategy connects all parts of the ecosystem and clearly sets out the actions we need to ensure the environment our children inherit is richer than it is today.

Over the past five years, we've been busy.

We've achieved and passed our target to increase understorey habitat by 20 per cent - now at 26 per cent and rising.

We established a Gardens for Wildlife program so that residents can turn

their balcony, backyard, community garden, school veggie patch or green rooftop into a haven for birds and bees.

Our expert garden guides are on hand to help create wildlife-friendly habitats, even if there is only space for pot plants.

We've worked with the University of Melbourne to reintroduce a locally extinct species, the tiny, flightless Matchstick Grasshopper. Insects like grasshoppers play an important role in maintaining a healthy ecosystem and are an abundant food source for larger animals such as praying mantis, lizards and birds.

The Matchstick Grasshopper's population has dwindled in recent years due to a scarcity of suitable environments and an inability to relocate from one habitat to another.

To learn how you can get up close to nature visit [melbourne.vic.gov.au/urbannature](https://melbourne.vic.gov.au/urbannature)



Garden Guide volunteers visiting a Melbourne garden, inspiring private landholders to create space for nature in the city

## Parks and gardens directory

Melbourne is world renowned for its parks and gardens.

To make it easier for you to explore our green spaces, we've created a free park and gardens directory to help guide your tour around the city.

Our interactive City of Melbourne maps provide easy-to-access information on park facilities including playgrounds, barbecues, dog off-leash areas and more.

Visit [maps.melbourne.vic.gov.au](https://maps.melbourne.vic.gov.au)



Explore one of city's parks and gardens today

# The new Carlton venue shining a light on local makers

WORDS BY *Kaylah-Joelle Baker*  
BUSINESS

For the team behind Elgin St's newest all-day venue sunhands, which opened on March 21, there is nothing more important than championing local makers, growers and producers.

This approach was inspired when the three co-owners Ishella Butler, Matt Roberts and Nathen Doyle were working in hospitality during the pandemic, at the renowned Lygon St venue Heartattack and Vine.

While it was a rough time for the trio, it strengthened their bond and ultimately led them to their latest venture at the 169 Elgin St corner shopfront.

"The tree of us kept Heartattack and Vine going and part of that was we had to downscale, source local and also find what the Carlton community needed – we turned into this grocery-style shopfront, and it was very much catering to the community needs and keeping small businesses afloat," Ishella said.

"We came out the other side and reassessed what hospitality meant to us and what we wanted to bring and contribute."

Through getting to know talented bakers and makers and produce growers, the team started to recognise just how much potential was right at their doorstep.

Among the many suppliers within Victoria and Australia whose products they use and stock are sustainable seafood supplier Two Hands, Day's Walk Farm located in Keilor Valley, Long Paddock Cheese, and Hobart's Rough Rice.

And while Ishella said they were not necessarily "reinventing anything" and were simply

focused on giving back, sunhands seemed to already be paving the way for something special – living up to its name of feeling warm, familiar, and handmade with love.

"We have all worked in this area for a long time and there are all these amazing pizza and pasta offerings, but for when you want something fresh, easy and on the go, that's what we provide," Ishella said.

The business has a strong seasonal deli offering of fresh salads, sandwiches, pastries and deli goods for lunchtime, an all-day drinks menu, and through the afternoon there are small plates created by talented head chef Pat Drapac. Small plates consist of Akimbo country sourdough with Chasney Estate EVOO, house pickled octopus, fried shishito peppers, baked ricotta with agrodolce, and oysters with mignonette.

"We want people to pop in any time of day for a beautiful glass of wine and bar snack – a daily ritual for those who enjoy the finer things in life," Ishella said of the space which she calls her "dream venue".

Matt and Nathen are still the sole owners of Heartattack and Vine, while Ishella left her position as manager to successfully achieve her goal and dream of opening sunhands.

Sunhands is currently open from 10am to 3pm, Tuesday to Sunday, and once evenings are launched in late-Autumn the venue will offer seasonal plates and become a meeting place for pre- or post-dinner small plates and drinks. ●

**For more information:**  
[sunhands.com.au](http://sunhands.com.au)



▲ Pat Drapac, and co-owners Nathen Doyle, Ishella Butler, Matt Roberts.

# Changing the inner-city property management landscape

*For those within the inner circles of the property management industry, they know it can often be a thankless job.*

WORDS BY *Jack Hayes*

A global pandemic coupled with the biggest rental reforms in history have caused a revolving door of property managers leaving the industry.

Not only is that revolving door causing issues for those within the profession, but it also has a natural flow-on effect to the clients it services: landlords and tenants.

Wedging a foot in that revolving door, and changing Melbourne's property management landscape, are Kim Davey and Suzie Inglis from the CBD's eminent boutique and prestige real estate specialists, Donazzan Boutique Property (DBP).

With a combined experience of more than 25 years, Mr Davey and Ms Inglis have carved an unmatched reputation in handling some of the CBD's premium rental properties since adding DBP's property management arm in early 2021, under the stewardship of renowned local agent Gina Donazzan.

Serving as a director since joining DBP, Mr Davey has developed a hands-on approach like few others in the city.

That method, paired with a considered approach to the type and volume of properties under his team's management, has set Mr Davey's eyes firmly on becoming the CBD's number one agent for prestige apartments.

"With our boutique approach, we are always on call. If something happens at the Royal Domain building for example, I'll be there for you on a Sunday having a look," Mr Davey said. "I'm not just relying on our tenant to send photos; I'm using my experience to understand what the issue is and how we can get it fixed."

"The boutique approach is having a balance



▲ Donazzan Boutique Property director Kim Davey.

of being hands on when you need to be and hands off when you don't."

"Because we mainly target the inner city, we are there to make our clients life easy. If you have a tenant moving out on Wednesday and another moving in on Thursday, and perhaps the property needs a clean, we don't always outsource thus ensuring a seamless transition for our clients; if needs be, we do it ourselves."

According to Mr Davey, he wants to shift the dial of culture in property management.

With an exodus of property managers since COVID (around 30 per cent of the workforce), Mr Davey wants more to be done within the industry to ensure the profession is seen as a tenable and rewarding career.

"In the industry now, you need a balance of Zoom culture and office culture and to blend the two together to make sure all staff are catered for," Mr Davey told *Inner City News*.

"For our clients, they know; when you deal with Donazzan Boutique Property, you are dealing with a director of the company, not just



▲ Property consultant Suzie Inglis.

a first-year property manager."

With a careful curation of 140 properties managed by four agents, the DBP team boasts a remarkably low property-to-agent ratio, resulting in an intimate knowledge of their given property, its tenants, and its landlords.

According to Ms Inglis, it is not uncommon for large-scale agencies to have each property manager dealing with more than 200 properties alone.

"Our sales listings are a good indication of the types of properties we look after in property management," Ms Inglis said. "Our area of specialty is within the heritage and boutique market, but we also manage studio or one-bedroom apartments and everything in between."

"We have always been selectively small and prioritised quality over quantity."

"At every tenancy in a particular high-end apartment building in the CBD, Kim meets them with their condition report and a bottle of marble cleaner because their apartment features Calcutta marble from Italy, and if you use

“  
”

*With our boutique approach, we are always on call. If something happens at the Royal Domain building for example, I'll be there for you on a Sunday having a look.*

normal spray on it, you will mark it. That's the kind of attention to detail we give as a matter of course," she said.

"Property management has always been a tough job, even before COVID, but the most important ingredient that made you come to work were the people you worked with. Working with great people and great bosses like Kim and Gina, it provides an enjoyable positive and dynamic environment where you can learn so much."

Ms Inglis told *Inner City News* rental yields had grown for the past six quarters and her team was beginning to see competition for rental properties resemble pre-pandemic levels.

While the industry slowly recuperates from a battering past two years, Mr Davey and Ms Inglis are forging a reputation of a considered, tailored approach to property management; catering to the varied and specific needs of the high-end real estate market, while continuing that level of service for all clients within their portfolio. ●

**For more information:**  
[donazzanboutiqueproperty.com.au](http://donazzanboutiqueproperty.com.au)

METRO TUNNEL



# Metro Tunnel reaches 40 million hours as testing looms

*Metro Tunnel workers have just clocked 40 million hours of work on the city-shaping project as they prepare to start testing trains in the tunnels in the second half of the year.*

Since work began in 2015, the team has dug the twin nine-kilometre tunnels under Melbourne, installed systems from signalling to the Victorian-first platform screen doors, and are

bringing the five new underground stations – Arden, Parkville, State Library, Town Hall, and Anzac – from concept to reality.

As work on the Metro Tunnel progresses, the focus is shifting from building the new tunnels and stations to making sure the high-tech signalling, communications and other systems that allow trains to run safely are working together effectively.

The modern signalling system is the first step towards a “turn-up-and-go” network for Melbourne, similar to other world-class cities like Singapore and London.

Everything from lifts, escalators, security

systems, communications, lighting, plumbing, power and the platform screen doors will all be progressively tested in a rigorous process that will last many months.

Commuters along Royal Parade may have recently noticed a splash of colour at Parkville Station.

Eye-catching blue steelwork that will support three entrance canopies, providing easy access to the world-leading health and education precinct, has been installed as work rises out of the ground. The colour was chosen to match the existing landscape, including the blue of the University of Melbourne.

The main entrance on Grattan St will have a 54-metre-long glass and steel canopy to draw natural light into the station concourse.

The Metro Tunnel Project is creating around 7000 jobs for Victorians, including hundreds for apprentices, trainees and opportunities for Indigenous people and priority job seekers.

When complete in 2025, the Metro Tunnel will create capacity for more than a half-a-million extra passengers on the rail network every week. From 2029, trains will run through the Metro Tunnel to Melbourne Airport, with the trip between the CBD to the airport taking around 30 minutes. ●

STATE MP (UPPER HOUSE)

## It's time for reform of Victoria's criminal justice system

*The March release of the Justice Reform Initiative's Victorian State of Incarceration Report paints a harrowing picture of the problems facing our criminal justice system.*

WORDS BY *Evan Mulholland*  
MP FOR NORTHERN METROPOLITAN

The Victorian adult prison population now has grown by over 32% in the last decade, and we are now spending a billion dollars a year keeping Victorians locked up, an increase of 96 per cent over the same period.

It shows that something is deeply wrong with the way the Victorian Labor Government is overseeing our prison and rehabilitation systems.

In my inaugural speech I spoke about the need for us as Victorians to appeal to our better selves in dealing with the crisis of incarceration in our State, and the power of the value of redemption.

I believe Victorians are ready to appeal the human good in people and begin exploring better ways to combat the root causes of crime. The criminal justice system in our state does not differentiate between those that we are afraid of and those that we are just mad at, and our lack of nuance does both those we lock up, and our community a great disservice.

That is why under the leadership of John Pesutto, the Victorian Liberals have appointed this state's first ever Shadow Minister for Criminal Justice Reform in Brad Battin. It is time for new solutions. We cannot in good conscience spend yet another \$798 million to increase state prison capacity, which appears to be the only solution on offer from Labor.

We must prioritise community safety, but that does not mean we cannot find alternative punishments for people who should not be in prison. For non-violent offenders, such as low-level drug possession.

I believe Victorians would rather spend a small amount at the start of someone's interaction with the justice system on programs of rehabilitation than spend \$149,113 a year, every year, to keep them in prison. This is not only makes economic sense, but is clearly a better outcome for society.

Current policy continues to lead to circumstances where many who are incarcerated cannot find a job once they leave prison, and end up back there. The report found that 53.1 per cent of people in Victorian prisons have been there before. This means the government spends \$1.5 million per day on prisoners who have been incarcerated before. This recidivism disproportionately affects already vulnerable communities like First Nations people.

I firmly believe there are good human qualities to every Victorian, even those that have followed the wrong path at times. We should seek out the good in our fellow Victorians and always find a pathway to redemption.

We can and must do better. ●

MELBOURNE ZOO

## Legs for days! Black-winged stilt chick strides into new habitat

*A newly hatched Black-winged stilt chick is growing into its legs at Melbourne Zoo with ample encouragement from Mum and Dad.*

The long-legged, water-dwelling chick is waddling around its pond, flapping its tiny wings and chirping to its parents as it clumsily explores its new habitat.

Melbourne Zoo birdkeeper Kody Davidson said the stilt's parents worked together to protect the fluffy brown-and-white chick as it steadily became more independent during the past eight weeks.

“The chick is absolutely adorable and is eating on its own, splashing in the pond and occasionally hiding under Mum and Dad for comfort,” Mr Davidson said.

“Stilts breed when they feel safe and happy in their environment. The chick is a major welfare win for Melbourne Zoo as it was conceived shortly after we upgraded the habitat with new Australian native aquatic plants, substrate and a larger pond.”

While nesting, Black-winged stilts bend their long, orange legs and shimmy their bodies down onto the eggs, which incubate for 25 days. The species likes to nest out in the open near wetlands, without any natural foliage to protect the nest.

Mr Davidson said visitors could see the little family when they visited the beautiful new habitat at the Zoo,



which has been a year in the making. “Ground dwelling birds have evolved to be great parents as they're vulnerable to predators, so it's amazing to see them stick together as a family with the new chick,” Mr Davidson said.

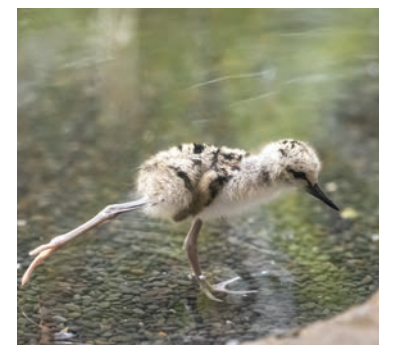
“The birds are so charismatic, the new aviary is stunning, and visitors can enjoy sitting on the bench and observing the birds thriving in their environment.”

Black-winged stilts are Australian natives and usually live in marshes, mudflats and the shallow edges of lakes and rivers. The birds can occasionally be spotted at the Trin Warren Tam-boore wetlands in Royal Park.

They use their long beaks to eat aquatic insects as well as snails and yabbies that wade near the water's edge.

Black-winged stilts are part of a Zoos Victoria regional breeding program. Zoos Victoria and Melbourne Zoo visitors are reminded that all tickets must be pre-booked online at [zoo.org.au](http://zoo.org.au).

Zoos Victoria members no longer need to book tickets. ●



CARLTON NEIGHBOURHOOD LEARNING CENTRE

# You can't value what you can't see

*On International Women's Day, the Carlton Neighbourhood Learning Centre (CNLC) recognised the contributions of three of its foremothers by naming three classrooms after them.*

WORDS BY *Tony Milne - Executive Officer*

Yarra Mayor Claudia Nguyen spoke and unveiled the new classroom names, and the event was attended by Yarra Cr Amanda Stone.

The centre manager for 23 years, Mary Parfrey; the further education manager for 25 years, Sarah Deasey, and community development worker for 30 years, Panayota Miller, collectively contributed 78 years to CNLC and the Carlton community. They left a legacy of a thriving Neighbourhood House that continues



to provide relief and support to people in need.

By renaming the classrooms after these women, CNLC honours their contributions and their significant role in shaping the organisation and improving the lives of people in Carlton. The

Mary Parfrey Room, The Sarah Deasey Room and The Panayota Miller Room will serve as a reminder of their dedication and commitment.

The theme for International Women's Day this year was "Embrace Equity". The campaign

theme was to get the world talking about why equal opportunities aren't enough. Equity means creating an inclusive world and recognising and celebrating the contribution of women.

According to a 2020 analysis Melbourne has at least 53 public statues and memorials dedicated to men, compared to only six dedicated to women. Historically, many buildings and landmarks in Melbourne have been named after men. In recent years, there has been a growing movement to recognise and honour more women and people from diverse backgrounds in the naming of buildings and public spaces.

You can't value what you can't see. And you can't be what you can't see. The recognition of these women is a timely reminder of the importance of acknowledging the work and contributions of women.

Our current and future students and clients will be able to learn about and appreciate the valuable impact of these three women as we acknowledge and celebrate the women who have paved the way for us and who continue to work tirelessly to create a better world. ●

PUBLIC HOUSING RESIDENTS' NETWORK

# Stop the demolition of public housing at Barak Beacon, Port Melbourne

*I am urging all my column readers – as I have in previous columns – to get behind Margaret Kelly and other residents who remain living on this estate. Margaret has declared they will have to carry her out if they want to proceed with the demolition of her home.*

WORDS BY *Cory Memery*

A petition has been tabled in state parliament to stop the demolition

and instead retain, refurbish and build more housing on the estate. The campaign can be followed on the Save Barak Beacon Facebook page:



### Housing crisis deepens in Melbourne

On March 23, *The Age* published another article documenting the housing affordability crisis in Melbourne, writing...

"Rental vacancy rates across the country have plummeted over the past two years to record lows. In Melbourne, it is now five times as difficult to find a rental property than it was in the early 2000s. The collapse

in vacancy rates is also driving up rent for many properties, making them increasingly unaffordable for the nation's lowest-income earners."

The state government's policies and programs on housing need complete revision. Hoping for an improvement in the next few years and beyond based on current federal and state government policies and programs is delusional.

### The private market is causing the problem, not the solution

We all need to understand that the private market for the past two decades has generated the crisis. In 1999 then Liberal Treasurer Peter Costello delivered a wealth windfall to investors by introducing a 50 per cent discount on capital gains when investors sold their properties. Since then, there was a rush to invest and take profits that drove prices up.

Peter Costello now heads up the Future Fund, Australia's sovereign wealth fund, where the federal government wants to invest \$10 billion to get returns to invest in so-called affordable (not public) housing.

When Labor first announced this plan before the election it was promising closer to \$1 billion per year from investing with Future Fund. This has been driven down to just \$500 million as the stock market has been volatile and delivering lower returns.

### New affordable housing program

The federal government is currently trying to legislate the \$10 Billion Future Fund program. It is getting constructive proposals to change course from the Greens and other crossbenchers.

The Victorian Government needs to abandon its current policies of

demolishing public housing and defining affordable rental housing as being 90 per cent of local market rents and join in a call for a change of complete course by the two tiers of government with the following new policies:

- Invest the federal \$10 billion in housing estate retention and refurbishment, and build more;
- Remove the capital gains discount and invest projected additional tax revenue in every future year into building more public housing; and
- Propose a national conversation on the human right to housing and decide on investments beyond the \$10 billion to deliver affordable housing for very low to moderate income households.

\* *Written with the assistance of the Save Public Housing Collective.* ●

CARLTON ROTARY

# Carlton Rotary opens new second-hand bookshop in Docklands

*The Rotary Club of Carlton has combined with the Rotary Club of Albert Park to open a second-hand book shop in a shopping centre in Docklands, known as "The District". This is near the now closed Southern Star Observation Wheel, and the Costco Warehouse.*

The shop is in an internal street of shops called Wharf St. The large space we have allows us to store and sort our books as well as display around 6000 for sale. All categories of books are on sale, including travel, biography, history, arts and crafts, cooking, gardening, fiction, crime, children's, theatre, literature, and humour. Also included are a large selection of DVDs, CDs and vinyl records.

Members of both clubs staff the shop which is

open from 10am to 5.30pm, seven days a week. Prices of most books are between \$2 and \$4.

Previously, Carlton Rotary ran an annual book fair at Kathleen Syme Community Centre in Carlton, and then ran pop-up shops over the Christmas/New Year period in vacant shops in Lygon St. The benefit of the two clubs working together means costs can be minimised, and returns maximised through having the shop open for extended hours.

The two clubs previously shared a purely storage space in the centre but this new space is much more conducive to having a sales area. The shop opened on February 5, and the current lease is for six months.

The funds raised allow the two clubs to support a wide range of their community, and international projects. Local activities supported by Carlton include swimming lessons for refugee children, offering Outstanding Community Leadership Awards, attendance at police camps for troubled youth, encouragement awards for secondary students and attendance at aspiring young leaders' camps.

Carlton also supports Rotary world projects

on controlling malaria and eradicating polio, as well as a club-specific project providing online education to girls and women in Afghanistan.

Janet Ferguson, who leads the Carlton volunteers, said it looked forward to welcoming members of the local community to come and browse and hopefully find interesting reads or a hidden treasure.

### Princes Hill Secondary College

The club has developed a rewarding relationship with the college to support aspects of the students' work. Last year we wanted to recognise the enormous demands placed on students during the COVID pandemic.

Awards were created to recognise both Perseverance, and Leadership and Resilience during this time. Each award was a voucher for \$500 from Readings to support the purchases required for subjects studied in 2023. School coordinators chose the students most deemed to have displayed these characteristics.

James Nuttivy was awarded the Leadership and Resilience Award and Rose Coleman the Perseverance Award. ●



▲ *Photo: James Nuttivy with Princes Hill Secondary College assistant principal, Jo Sayer.*

EAST MELBOURNE NEIGHBOUR NETWORK

Tom Hogg explains how our health is in our own hands

“  
We have had some great talks at our get-togethers, but Tom Hogg’s contribution was right up there in terms of practical health advice.”



▲ Tom Hogg.

Tom detailed that he was diagnosed with diabetes in 1998. He was overweight and had to learn to manage his condition. He said that he “pivoted” to the medical world, eventually becoming chair of Diabetes Victoria and a board member of Eastern Health. Tom’s main message was that it was possible for people to improve their medical outcomes by focusing on their eating, drinking and physical activity habits.

Tom provided statistics that for over 65s, 29 per cent have a chronic medical condition, a further 23 per cent have two such conditions, and a further 28 per cent have three chronic medical conditions.

The term “chronic disease” is one that covers a wide range of ongoing conditions that must be managed, including high blood pressure and high cholesterol.

The treatment of chronic diseases costs \$38 billion annually, accounting for 36 per cent of the national health budget.

Tom referenced the evolutionary biologist Dr Daniel E. Lieberman from Harvard who points out that we have evolved over the eons as hunter/gatherers, and that the

Western lifestyle was incompatible with that evolution in terms of health outcomes for us.

We are built to walk a lot, and our food intake often is in excess of our daily energy needs. Tom showed that even 100 calories per day in excess of our energy requirements would bring about an annual weight gain of 3.3kg.

So, modifying our food and drink consumption to have a diet that is suited to our daily energy needs is an important factor in better health. Exercise that keeps us moving where possible and helps our bone density and sense of balance is also important, particularly as falls becoming more of a risk as we get older.

Tom strongly recommended involvement in the various movement classes of the Neighbour Network as a great means of assisting in this. He referenced the significant improvement that he had recently achieved in exercises for maintaining balance.

New ideas are sought from the community as we seek to provide additional meaningful, fun, and engaging activities for all age groups. Your ideas and involvement will help strengthen our community and enhance the health and wellbeing of your neighbours. ●

Contact Susan or Ann - Maree: emnn3002@gmail.com

PARKVILLE ASSOCIATION

Here we go again!

Last month when I wrote my column, we were heading off to VCAT... little did I think this column would be a repeat!

Starting with the City of Melbourne’s submission on the first day followed by a couple of hours on day two, the hearing finished with our local objectors presenting. They were superb; both passionate, locally focused, and factual.

After our heritage expert presented and with a couple of hours out for a VCAT management meeting we were up to the end of day three. I would love to say more but best to wait for the conclusion.

As a result, we have been listed for a further four days on March 30 and 31 and April 3 and 4. What should have been a short hearing will become a seven-day hearing.

With this, of course, comes considerable cost and the residents of Parkville have been stunning with their donations.

More on this next month. I just wish rather than a fighting a proposal to relocate a business from East Melbourne to our quiet village we could have used the funds to help worthwhile charities!

This year as mentioned previously is the 150<sup>th</sup> anniversary of the first houses built in South Parkville. We have planned to celebrate this in style and will have a special function in October.

Part of the celebration will be the unveiling of a storyboard in Barry St



celebrating Parkville and the building of Parkville Station. This should be completed in late May.

For those that have not seen the current storyboard, go and visit Barry St and see the wonderful photographs.

We will also be having other functions during the year.

A short column this month as we continue to fight the good fight!

Thank you for your support. ●



Rob Moore  
PRESIDENT  
PRESIDENT@PARKVILLEASSOCIATION.COM

EAST MELBOURNE HISTORICAL SOCIETY

Ormiston educational establishment for young ladies

East Melbourne from its earliest days was full of schools.

WORDS BY Sylvia Black



▲ Ormiston, Grey St, East Melbourne. Photo reproduced in Pioneer Doctor by Mary Kent Hughes.

The larger, purpose-built church schools eventually grew too big for the small parcels of land available and moved to more spacious suburbs; and the smaller privately run schools generally died a natural death when their principals retired or failed to make a go of it.

One exception was Ormiston. This was a school founded by Mrs Margaret Ainslie about 1861. It started in her own home on George St, East Melbourne. Within a few years she moved the school to new premises around the corner in Powlett St, and sold to Miss Nimmo, who moved it around another corner to Gipps St, and again to Clarendon St.

In 1872 while still in Clarendon St, the school was bought by John Singleton, doctor and philanthropist, for his daughters, Elizabeth (known as Grania) and Anne (known as Mercy), who were old girls of the school. In 1877 he rented a large property in Grey St and the school moved to its final East Melbourne address, before moving to Surrey Hills in 1900 and finally, in 1964, merging with Camberwell Girls Grammar. Its junior school still carries the name Ormiston. The Grey St building was demolished in the late 1930s to make way for the existing block of flats, now numbered 129.

Mary Kent Hughes in her book, *Pioneer Doctor* (1950), describes her great aunts as: “Golden-haired Grania, with her superb carriage and gracious smile; Mercy, brown-haired

and more homely as to features, but with her essential goodness shining in her happy face ...”

Many would have thought them set on a path towards marriage but the two were committed to education and prepared to forego all such thoughts in its pursuit. After leaving Ormiston as students the two had stayed on for some years as teachers under Miss Nimmo, so were well prepared for the task ahead.

As well as the school and the family’s private accommodation, the house also provided space for Dr Singleton’s busy medical practice and functioned as headquarters for his many philanthropic enterprises. As well as learning their lessons the students held regular cake-stalls and bazaars to raise funds.

Among the East Melbourne school’s alumni was Ada Tovell (nee Fenton), the first woman to practise as a dentist in Australia. The Australian College of Dentistry was founded in 1897 and Ada graduated M.A.C.D. in 1900. She at once set up her own practice at 161 Collins St.

Two old girls inspired by the Misses Singleton, were the Misses Morris; Edith and Mary, who in 1898 bought Merton Hall in South Yarra, no doubt with the help of their father, William Edward Morris, registrar of the Anglican diocese. The school is now more correctly known as Melbourne Girls’ Grammar. ●

CARLTON HISTORY

Cycling track at Exhibition Building

In the late 19<sup>th</sup> and early 20<sup>th</sup> centuries, cycle racing was one of the most popular sports in Melbourne.

It was so popular that in 1891 the trustees of the Exhibition Building in Carlton decided to build a cycle racing track next to their building on the north side, where the Museum now stands.

In the years that followed, the track was the venue for races that attracted thousands of Melburnians to watch local and international stars race. It was a popular attraction for more than half a century.

In 1898 a race organised by the Australian Natives Association on what was then known as Foundation Day (later called Australia Day) is reported to have attracted in excess of 70,000 spectators, making it one of the most highly attended bicycle race events in the history of Australian cycling. There was standing room only in most parts of the grounds, and the grandstands were bursting.

The crowd witnessed a 46-race program which began at midday and ran into the evening. It carried prize money of £220 for the winner of the main event, the ANA Wheel Race, the highest for any race in the world at the time.

Besides the ANA Wheel Race, the exhibition outdoor track also saw the running of the best-known and longest-standing cycle race in Australia, the Austral Wheel Race, in the 1900s and 1920s.

Over the years the track was upgraded and refurbished several times. Arc lights were added in 1905, making it Australia’s premier cycling track, with international champions regularly competing there. By the 1920s, however, public interest in cycle racing had dropped off



▲ Cycle racing at the Exhibition Building in Carlton (Photo: State Library of Victoria).

somewhat, and the track was used for the racing of low-powered motorcycles as well as bicycles.

Interest was revived a little in 1936 when an entrepreneur leased the track from the trustees of the Exhibition Building and constructed a board track. This was a banked track designed for a different style of racing that emphasised tactics and speed.

However, the board track was objected to by local residents and others on the basis that it restricted public access, prevented the area from being used by other sports and was an eyesore. In 1939 they won a court case that forced the board track to be removed.

During World War Two, the Exhibition Building was taken over by the Royal Australian Air Force. By the time the Air Force moved out in 1946, the track was completely unusable, and the area was used instead for the construction of huts for a Migrant Reception Centre. ●



Jeff Atkinson  
PRESIDENT CARLTON COMMUNITY HISTORY GROUP  
JEFFANN@BIGPOND.NET.AU

PUZZLES & TRIVIA

Quiz



- 1. Aside from Australia, which other country has hosted the Australian Open?
2. What Carlton car park is known for its 1970s Brutalist architecture...
3. Which actor starred alongside Adam Sandler (pictured) in 'I Now Pronounce You Chuck and Larry'?
4. What Olympian received an Italian knighthood in 1962 for his support of new immigrants in Melbourne?
5. What two major festivals took over the city during the start of March?
6. What stylish Grammy award winning singer was seen dining in a suburb adjacent to East Melbourne within the last couple of months?
7. Who directed the 1979 film 'My Brilliant Career'?
8. Yellowfin, southern bluefin and albacore are all types of what fish?
9. What is the name of celebrity chef Heston Blumenthal's first restaurant?
10. Is the coping saw a type of hand saw or electric saw?
11. The Melbourne Mar Thomas Church in Parkville had been without a crown spire for around 40 years, what happened to the original?
12. A collection of short memoirs from residents at a Carlton retirement village has been recently published, what is the book title?

QUIZ SOLUTIONS

1. New Zealand 2. Cardigan House car park 3. Kevin James 4. Nino Borzari 5. PayPal Melbourne Fashion Festival and Moomba 6. Harry Styles 7. Gillian Armstrong 8. Tuna 9. The Fat Duck 10. Hand saw. It was destroyed in a storm 11. Changing Times, Changing Lives: Recollections from Twelve of the Lucky Generation

5x5 No. 022

Insert the missing letters to make 10 words - five reading across the grid and five reading down.

Grid for 5x5 puzzle: T \_ T A, \_ Q \_ I, S R S, \_ A L, S O S

SOLUTIONS

TFTRA, EQUIP, SURFS, TABLE, SLOES

PUZZLES AND PAGINATION ©PAGEMASTERS PTY LTD PAGEMASTERS.COM

Apr, 2023

Sudoku

No. 022

Fill in the blank cells using the numbers from 1 to 9. Each number can only appear once in each row, column and 3x3 block

EASY

Easy Sudoku grid with numbers: 2 3, 7 8 9 5 2 6, 8, 6 7, 5 9, 3 9, 6 4, 2, 9 3 6 5 2 4 4

HARD

Hard Sudoku grid with numbers: 7, 6 1 8 9, 9 1 4, 8 4 1, 2 5 9 8, 3 6 4, 1 3 2, 6 9 3 8, 1

SOLUTIONS

EASY

Solution grid for Easy Sudoku

HARD

Solution grid for Hard Sudoku

Wordfind

Theme: Dogs

The leftover letters will spell out a secret message.

Wordfind grid: S H E E P D O G A R S, R Y D L M B E U C E P, D E F N G U H P A L A, N P I F U A T S N I N, U O T R U O E T I E I, H O F H R L H B N W E, S C I R I E F F E T L, H H G R E A T E L T N, C N A I N A R E M O P, A S C H N A U Z E R W, D R E T R I E V E R D

- BEAGLE PUG, CANINE RETRIEVER, CHIHUAHUA ROTTWEILER, DACHSHUND SCHNAUZER, FLUFFY SHEEPDOG, GREAT SPANIEL, MUTT TERRIER, POMERANIAN WOLFHOUND, POOCH

Secret message: Best friend

Crossword

No. 022

ACROSS

- 1 Levels (of quality) (9)
6 Conversations (5)
9 Rampaging (7)
10 County in NW England (7)
11 Lackadaisical (9)
13 Astound (5)
14 Colouring (7)
16 Fantasy creature (7)
18 Greek letter (3)
19 Climbing support spot (7)
20 Sewer entrance (7)
21 Member of a Jamaican religious movement (5)
23 Choosers (9)
26 Food (archaic) (7)
27 Distance in models or maps (7)
28 Cooks (quickly) (5)
29 Distributes (9)

Crossword grid with numbers

DOWN

- 1 Horses' fathers (5)
2 Loathe (9)
3 Tendency (5)
4 Mat (3)
5 Is not good (colloq) (5)

- 6 Associate (9)
7 Blood carrier (5)
8 Impasse (9)
12 Bordered (5)
14 Weekend days (9)
15 Worshippers (9)
16 Desert animal (5)
17 Study of the production and consumption of goods (9)
22 Hindu deity (5)
23 Satisfied fully (5)
24 South Australian valley (5)
25 Long detailed stories (5)
27 Distress call (1,1,1)

SOLUTION

Solution crossword grid

Codeword

No. 022

Codeword crossword grid with letters: 11 7, 23, 22 15 3 5 12, 16 20 8, 7 21 20 14, 1, 19 3, 5 14 7 15 23 3 4 2, 13 24, 1, 5 2 17 4, 10 19 9 20 12, 4 2 21 17 7, 8 20 5 12 2 10 18 13 3 15 23, 7 5 13 2 3, 1 3 13 13 3 B 8 15 3 6 20 5, I 13 24 12 2 3, 23 10 I 4 2 10 I 20 5 5 3 17, 23 14 10 3 I 20 2, 3 5 8 15 7 5 B 13 I 5 12 15

SOLUTIONS

Solution grid for Codeword

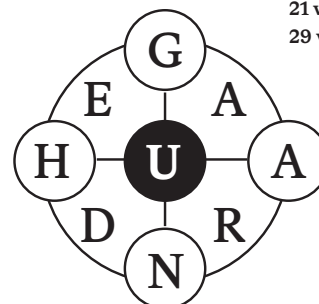
Codeword numbers: 1 14, 2 15, 3 16, 4 17, 5 18, 6 19, 7 20, 8 21, 9 22, 10 23, 11 24, 12 25, 13 26

9-Letter

No. 022

Today's Focus: 14 words: Good, 21 words: Very good, 29 words: Excellent

Using the nine letters in the grid, how many words of four letters or more can you list? The centre letter must be included and each letter may only be used once. No colloquial or foreign words. No capitalised nouns, apostrophes or plural words ending in "s".



SOLUTIONS

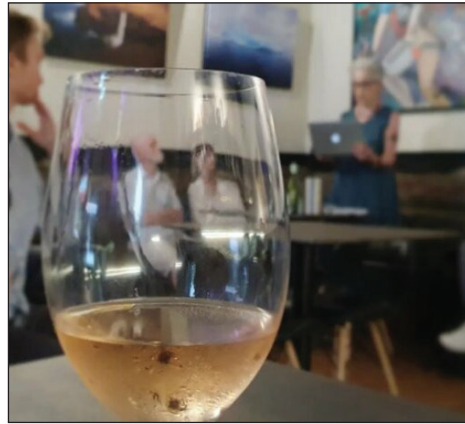
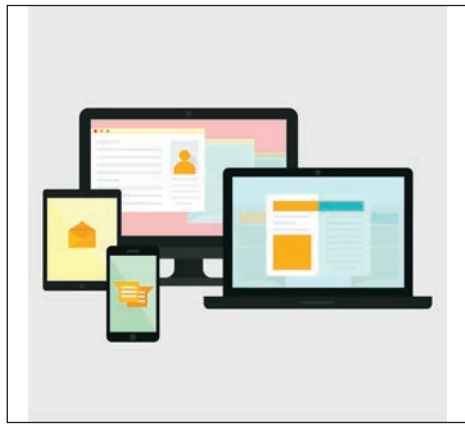
Reference: Collins Concise English Dictionary

Under, unheard, unread, urea, urge, urged, HARAANGUED, hued, hnge, hung, hunger, nude, nudge, ruede, ruede, rung, rung, ague, argue, argued, auge, aura, drug, dung, gerund, guar, guard, guard, harangue,

# What's On: April 2023

## Community Calendar

EVERY FRIDAY, 10AM TO 12PM  
**CONNECT CAFE: TECH I.T HELP FROM PEOPLE 55+**  
 April 14 to June 2. Light morning tea provided.  
 Learn new skills on your mobile, tablet device or laptop. Weekly workshops and one-on-one tech help with a trained and skilled Lively Tech Helper.  
 Kathleen Syme Library and Community Centre. Book: 9658 9190



UNTIL JUNE 25  
**POETRY AND PROSE READINGS**  
 Last Sunday of every month, 3:30pm to 5:30pm  
 Calling all budding poets, writers and lyricists! Come along to this supportive monthly poetry and prose meetup.  
 This is a free event but please register via SMS (0416 088 000). Drinks and food are available at bar prices.  
 Life's Too Short Bar - Tribeca Arcade

**FARMERS MARKET**  
 Every Saturday. 8am to 1pm  
 Stalls selling fresh produce on primary school grounds.  
 Everything from fruit, to vegetables, flowers, take home and ready-to-eat meals, honey, coffee and baked goods.  
 Carlton North Primary School



**WOMEN'S SOCIAL SOCCER (FREE)**  
 Saturday afternoons 1pm to 3pm  
 Melbourne Social Soccer runs free social games for women. Contact 0456 700 688.  
 admin@melbournesocialsoccer.com  
 Crawford Oval  
 121 Princes Park



**STOMPERS**  
 Every Wednesday, 10:30am to 11am.  
 Share the wonder of books with your preschooler at this storytime with stories, songs, rhymes, and activities.  
 For children aged 18 months to 3 years old.  
 East Melbourne Library  
 122 George Street  
 East Melbourne

**A VOLUNTEER TO USE EPSON ECHO ET 7750 USING SUBLIMATION PAPER FOR T-SHIRT PRINTING WITH HEATPRESS**  
 Must know how to set temperature of heatpress. Computer skills required  
 Call 0478674665  
 Email shukribodaye11@gmail.com

UNTIL AUGUST 31  
**A NATION DIVIDED: THE GREAT WAR AND CONSCRIPTION**  
 This free exhibition from the Old Treasury Building tells the story of this extraordinary period in our history. Booking not required.  
 Old Treasury Building  
 20 Spring Street  
 East Melbourne



THURSDAY, APRIL 6. 10AM - 4PM.  
**SMALL BUSINESS BUS: BUSINESS ADVICE**  
 Business advisors from Monarch Institute can help you with 1:1 tailored advice to help you start, build, or transform your small business. Confidential sessions are 45mins, free-of-charge. Book at Business Victoria website.  
 In front of ANZ Bank, 205 Lygon St

UNTIL JUNE 30  
**FITZROY GARDENS OUTDOOR ADVENTURE**  
 Entertain the kids by taking the outdoor adventure challenge in the heritage-listed Fitzroy Gardens. Suitable for primary school-aged children but adult assistance is necessary. 10am to 4pm.  
 Fitzroy Gardens Visitor Centre  
 Wellington Parade, East Melbourne



# Business Directory

## Health & Fitness

Experienced Teachers | Air Purifier | Student Discounts  
  
**Yoga Bhuja** 10 Magenta Place  
 Carlton South  
 yogabhujajournal.com.au

Evan **MULHOLLAND MP**  
 LIBERAL MEMBER FOR  
 NORTHERN METROPOLITAN REGION  
*Your voice in inner Melbourne*  
 (03) 9651 8242 Unit 10, 2 Graystone Court  
 Epping VIC 3076  
 Evan.Mulholland@parliament.vic.gov.au

**DONAZZAN**  
 BOUTIQUE PROPERTY  
 Contact our team  
 Gina Donazzan 0412 430 326  
 Kim Davey 0418 924 324  
 Suzie Inglis 0416 671 572  
 Will Caldwell 0419 010 270  
 ...Melbourne's Finest donazzanboutiqueproperty.com.au

## Shopping

**QUEEN VICTORIA MARKET**  
 For the best fresh produce, gourmet food and specialty shopping, you can't beat Queen Vic Market.  
 Open Tuesday, Thursday, Friday  
 Saturday & Sunday  
 with plenty of affordable parking.  
 QVM.COM.AU

## Politician

**ELLEN SANDELL**  
 STATE MP FOR MELBOURNE  
 (03) 9328 4637 office@ellensandell.com  
 146 Peel Street  
 North Melbourne VIC 3051

## Real Estate

CAINE REAL ESTATE  
 120 Jolimont Road, East Melbourne  
 03 8413 8000  
 sales@caine.com.au  
 SALES | LEASING | MANAGEMENT

## School

www.haileybury.vic.edu.au  
  
**HAILEYBURY**  
 KEYSTONE | BRIDGE | BERNICK | STY | BEECH

## Tennis Coach

**DAN DONNELLY TENNIS COACHING PROGRAMS**  
 Royal Park T.C. (crn Park St & The Avenue, Parkville/Brunswick)  
 All enquiries & bookings - call or text Dan 0408 991 700



**SOLD**  
402/1 Powlett Street,  
East Melbourne  
\$1,290,000

With over 25 years of experience in Sales, Leasing and Property Management, Donazzan Boutique Property uses its personalised approach to position clients to achieve exceptional results.



375 Napier St, Fitzroy

\$1,600 per week



213/280 Albert St, East Melb

\$1,250 per week

Truly Melbourne's Boutique  
Property experts.

Contact us to experience the Boutique difference.

Gina Donazzan  
0412 430 326

Kim Davey  
0418 924 324

Suzie Inglis  
0416 671 572

Will Caldwell  
0419 010 270

*Melbourne's Finest...*

[donazzanboutiqueproperty.com.au](http://donazzanboutiqueproperty.com.au)