

The voice of Docklands | 道克蘭之音

DOCKLANDS NEWS

■ Docklands is offered a primary school

See Page 3

■ No clues on Harbour Esplanade

See Page 6



■ 10,000 new neighbours for Docklanders

See Page 5

■ Great deals on the cards

See Page 7



Photography David Simmonds

Macbeth in Shed 4

The Australian Shakespeare Company is bringing Macbeth to Docklands this month.

And it's not just any old production. These body-painted tribal Picts give you a sense of the flavour of the show.

Playing from May 11-28, shows run from Wednesday to Saturday. See shakespeareaustralia.com.au for details.

Unprecedented attack on serviced apartments

By Shane Scanlan

Docklands' serviced apartment operators came under unprecedented attack from two separate directions last month.

Owner-occupiers have been increasingly concerned about the loss of residential amenity which uncontrolled short-term rentals deliver and have pulled out all stops to wipe out the practice.

At NewQuay, Nolan and Conder owners' corporations are conducting ballots of owners in an attempt to change the rules and outlaw serviced apartments.

And at Watergate, the City of Melbourne has given owners of serviced apartments 30 days to show cause why "occupation of the building as short-term hotel-style (class 3) accommodation should not be prohibited".

It is understood that the council's actions against the Watergate owners is a strategic tactic designed to dislodge a rogue serviced apartment operator. It is being conducted under building regulations and has nothing to do with zoning or any other planning matter.

Class 3 buildings (hotels) have stricter building safety regulations, but if owners instal new equipment and justify their operations within this class, they may fall foul of owners' corporations' rules which state that specific permission must be sought for "change of use" of apartments.

Serviced apartment opponents are likely to seize upon any admission that serviced apartments are being used as "hotel-style" accommodation as evidence of an illegal change of use.

This avenue of attack on serviced apartments may prove unnecessary in the case of the Nolan and Conder buildings if the owners' corporations there succeed in changing their rules to outlaw rentals of less than 30 days.

The owner's corporations have proposed a rule change that:

"An owner or occupier of a lot must not lease, sub-lease, license, rent, hire or otherwise deal with a lot or permit a lot to be leased, sub-leased, licensed, rented, hired or otherwise dealt with, for any period less than 30 calendar days."

It is estimated that about 25 per cent of NewQuay apartments are being rented as serviced apartments and, nominally, 75 per cent of owners must approve rule changes.

This would suggest that a change in the rules is extremely unlikely from the ballot.

But serviced apartment opponents are confident that the ballot will go their way because, in the event of a poor voter response, the threshold for success is lowered to only 50 per cent of owners.

Serviced apartment operators have already cast doubt on the legitimacy of the ballots, claiming a number of irregularities.

With QCs already posturing for position,

Continued Page 2.



The card that gives.

docklanderdeals.com



Suite 108, 198 Harbour Esplanade
PO Box 23008 Docklands 8012
Tel: 8689 7979 Fax: 9602 2929
www.docklandsnews.com.au

Advertising
Tel: 8689 7979 Fax: 9602 2929
advertising@docklandsnews.com.au

Reader contributions are welcome.
Please send articles and images to
news@docklandsnews.com.au

Deadline for the June edition is May 27.

Unprecedented attack on serviced apartments

Continued from Page 1.

it seems clear that, should the ballot be successful, this would be only round one in an ongoing battle.

Well-credentialed serviced apartment operators are concerned that they are being targeted because of the actions of rogue operators.

In the case of Watergate, they say one operator in particular is bringing their industry into disrepute and has forced owner-occupiers to fight to protect the value of their properties.

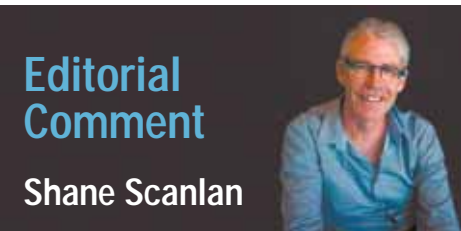
They say the rogue operator doesn't care who it rents apartments to and this has been known to result in unruly parties of more than 80 guests in small apartments and damage to common areas.

The Watergate owner's corporation has been fining serviced apartment owners for breaches of rules and recently banned from the building swimming pool any guest who has not been "inducted" in its use.

Serviced apartment operators point to increased rents and general Docklands property values as a justification for their industry.

They also point to the benefits that serviced apartments bring to local restaurants and warn of a severe fall in property prices should they be banned.

 **Comment on this story online:**
www.docklandsnews.com.au



Docklands' businesses suffered another unnecessary blow last month when the Lord Mayor again criticised the precinct.

Cr Robert Doyle no doubt means well, but he should reflect on the damage he does to Docklands every time he publicly raises its perceived deficiencies.

In radio conversation with 3AW's Neil Mitchell last month, Cr Doyle said: "I have a real fear that the planning in traffic was so wrong that it can't be fixed."

"The present management at VicUrban is doing the best they can. But I think the management of VicUrban, going right back to the very start, has a lot to answer for in terms of the design and the urban planning that they have now visited on us and the businesses down there."

Cr Doyle took apparent care to confine his remarks to traffic conditions. But to the

broader audience, Docklands' beleaguered Harbour Esplanade roadworks have become interchangeable with Docklands itself.

This is particularly so because Channel Seven's anger and frustration with major disruption for the last nine months has resulted in it "belting" VicUrban at every opportunity in its television news coverage over the decision to "pacify" Harbour Esplanade.

Cr Doyle's recent comments again featured on Channel Seven's news, complete with a humiliating grab of a befuddled VicUrban acting CEO Sam Sangster and some historic file footage of a frustrated motorist stuck in traffic.

While *Docklands News* does not support the decision to effectively reduce Harbour Esplanade from two lanes to one, we sympathise with its intent of discouraging through traffic.

And in the fullness of time, the decision to make driving through Docklands a poor choice will probably be applauded as visionary for its day.

But right now, it is hurting the equally visionary people who are trying to build businesses and lives for themselves against the odds in a brand new suburb without a critical mass of local residential support. Retail and hospitality businesses here need outsiders to survive. And they drive cars.

The negative publicity about what a nightmare it is to drive to Docklands is unlikely to result in reinstating two lanes of traffic. The Harbour Esplanade piggy bank is empty.

But in a bitter irony, the bad publicity is actually keeping the roads clear by keeping people away from Docklands. And that is hurting local businesses.

The sad fact of the matter is that despite being "relatively" well served by public transport, for the wider community, public transport is not an option.

Unlike in New York or London, only environmental zealots would choose to take the train or tram for a night out at a Docklands restaurant (for example).

So telling people not to drive to Docklands is actually the same things as telling people not to come to Docklands.

All Docklanders need to work together to promote and protect the Docklands "brand".

If there are problems with traffic, or anything else, we certainly need to work things out. But we need to do it without damaging the brand.

Docklands is like a family. We have our issues between us but we should keep our disputes and frank discussions amongst ourselves unless there is a very good reason to do otherwise.



Caption: Back (from left): Ivan Kiriakov, Elmo- Matt Power, Lion- Kevin Zou. Front (from left): Shahira Ameen, Ying Xing Niu, Russell Jones

Students share the love

A group of Mt Waverley senior school students visited Docklands last month to make a film about "sharing the love".

The Huntingtower School students were particularly interested to film a scene involving the RACV loan bikes on NewQuay Promenade.

Teacher Mel Beal said the Bruce House leadership team would show their film at their house assembly this term.

"Their film is about 'sharing the love' which is their theme for 2011. They were using the house mascots - Bruce the Lion and Elmo - as the stars and, of course, all the leadership team," Ms Beal said.



DOCKED

TAPAS BAR

cafe / restaurant

Outside gate 9 behind the giant wine glass:
concourse ETIHAD STADIUM

BOOKINGS: 9642 1882

www.docked.com.au

Happy hour

MONDAY - FRIDAY
HAPPY HOUR

5 - 6 pm
\$10 MOJITOS

\$15 lunch special

PAELLA
or
choice of tapas
& glass of wine



Docklands is offered a primary school

Docklands has been offered a primary school, which could be open by the start of the 2013 school year.

Digital Harbour developer David Napier has revealed plans for an eight-storey community building, and two storeys have been earmarked for a school.

Mr Napier has offered the building to the City of Melbourne under an attractive financial arrangement which means the council would not have to borrow funds and would end up owning the freehold.

The inclusion of the school is part of a bid to secure the proposed Docklands library and community centre for Digital Harbour.

The City of Melbourne and VicUrban want to build a library and community centre in Docklands but don't have enough money. They have allocated \$9 million between them and have called for expressions of interest from developers.

Lend Lease is also bidding for the library and community centre and wants to locate it as part of a civic centre at Bourke Square at the intersection of Collins and Bourke streets on Victoria Harbour.

Mr Napier thinks the inclusion of a school in his bid makes Digital Harbour a more attractive option. As well as a library and community centre, the Digital Harbour option also houses a childcare facility.

The Government is considering sites for an inner-city primary school, including E-Gate to the immediate north of Digital Harbour, but the E-Gate development won't start until November 2014 at the earliest.



An artist's impression of the Digital Harbour community centre.

A different part of Digital Harbour was last year earmarked for a primary school but the State Government says it has only now instigated a feasibility study despite such an announcement being made last July by former Education Minister Bronwyn Pike.

A spokesperson for the Minister for Education Martin Dixon said the feasibility study would look at locations and future demographics of an area ranging from Moonee Valley Racecourse to Fishermans Bend.

The spokesperson said the likely footprint of a high-rise school meant the department had to develop a brand new methodology for the study. He said Mr Napier's offer sounded attractive, but any decision about the location of a school would be made by the Education Department.

A spokesperson for the Education Department said: "The department is aware of Digital Harbour's proposal. The department is currently awaiting the outcome of an independent feasibility study into a school for Docklands to assist with its future school planning."

Mr Napier's plans for a mixed use community centre including a Docklands school are modelled on "ideas centres" which successfully currently operate in multi-storey buildings in London. His suggested plans show seven "open plan learning environment" class rooms on each floor.

"But the really attractive part to the Government is that the school could start with 150 children on one floor only and later expand to the other floor when demand increased in the future," Mr Napier said.

Mr Napier said the school would be able to use a 1200sqm park at the base of the building but would also have the ability to turn multi-functional activity rooms into outdoor facilities if it chose to. The public library facilities downstairs could also be used by the school.

He said the community building was located off LaTrobe St and incorporated a driveway and short-term parking so parents could safely drop off their children.

Record construction

Docklands is currently experiencing more construction than at any other time in its history.

VicUrban reports that more than \$1.77 billion worth of development is currently underway.

Acting Docklands general manager Simon Wilson said more than 1250 homes and about 280,000 sqm of commercial property were currently being built.

"Importantly, we are now seeing construction activity across multiple precincts, ranging from public infrastructure to both residential and commercial buildings," Mr Wilson said.

"This is clear evidence of the momentum that has been built up during the first decade of development."

Developments currently under construction include:

- Convesso, Victoria Harbour
- Goods Shed South, Batman's Hill
- Harbour One, NewQuay
- Kangan Batman TAFE Stage 2, Batman's Hill
- Lacrosse, North East Stadium
- Melbourne Water, Digital Harbour
- NAB's new head quarters, South East Stadium
- Quattro / ATO building, Batman's Hill
- Quay Park Townhouses, NewQuay
- River's Edge River homes, Stages 3 and 4, Yarra's Edge
- Serrata, Victoria Harbour
- The Avenues, NewQuay
- The Marina, NewQuay
- Tower 8, Yarra's Edge

Refreshingly Convenient

MANAGED BY
Lend Lease



Welcome to the wonderful convenience of the Merchant Street precinct at Victoria Harbour. It's basically your neighbourhood shopping centre, conveniently located at the Docklands end of Collins street. Picking up your daily essentials is now easier than ever, so come and discover it today!

SAFeway SUPERMARKET | AUSTRALIA POST | BREADTOP BAKERY | BROWN GOUGE DRY CLEANING | CENTURY 21 REAL ESTATE | CINNAMON'S SRI LANKAN CAFÉ | DG EXPRESSO | KALEYEDOSCOPE OPTOMETRISTS | LOUIS' EASTERN HEALTH | MADONNA'S PIZZERIA DOCKLANDS | SHINSEI FISH & SUSHI BAR | SUNNY ASIAN GROCER

Victoria Harbour

Merchant Street Retail Precinct, Victoria Harbour

Sustainability group to put down roots

Sustainability designers Urban Reforestation has patched up its differences with the authorities and will continue to call Docklands home.

The group had become frustrated by months of bureaucratic indecision about the future of the current temporary and planned permanent Docklands community gardens.

But founder and director Emily Ballantyne-Brodie says she is encouraged by being offered an ongoing role in the permanent garden in Victoria Harbour.

She said the temporary garden was going to be moved to another temporary spot in August to make way for Lend Lease's plans for a recreational facility on the site.

Urban Reforestation plans to take some of the temporary garden into the central city as a wider demonstration of the importance of green space in urban living.

She said a community board would be formed to run the temporary garden.

"Urban Reforestation has such a wider vision for sustainable living projects than just the garden," she said. "We have a lot more capacity to grow and make positive changes now that we have been assured of a more permanent base," she said.

VicUrban's acting Docklands general manager Simon Wilson said: "VicUrban is excited to be working with the City of Melbourne, Lend Lease and other key stakeholders to plan for a more permanent community garden to be centrally located within the Victoria Harbour precinct."

Urban Reforestation is holding a celebratory dinner on May 26. Tickets are \$40 and can be purchased by emailing docklandsdinner@hotmail.com.



Retail board appointment

Local pharmacist Bert Frigo is Docklands' new representative on the Melbourne Retail Advisory Board.

The board meets four times a year and advises the City of Melbourne on how to keep Melbourne a key retail destination.

Mr Frigo replaces Rebecca Marshall from ING Real Estate who resigned to start her own business about a year ago.

Mr Frigo said he was still learning the ropes, but his main role was to offer a Docklands'

perspective on retailing matters.

He said he was invited to join the board through his involvement in the council's small business grants program. Mr Frigo's established his NewQuay business in 2001 and awarded a council grant some years ago.

Mr Frigo is also taking on an executive role on the Docklands Chamber of Commerce.

Digital radio coverage issue

Docklands has been identified as a digital radio black-spot and research is underway into the best way to fix it.

Melbourne's digital signal comes from Mt Dandenong and is not strong enough to negotiate Docklands' unique built form.

The radio industry is currently investigating the suitability of an on-channel repeater located in the CBD to improve reception in Docklands and other inner city areas.

A spokesperson for Commercial Radio Australia said an on-channel repeater would improve reception but before deciding to invest in one, the industry needed to be satisfied that it would not interfere with television reception.

Docklands is known to have poor television reception, mobile phone coverage and analogue radio reception.

On-channel repeaters cost hundreds of thousands of dollars, a cost which would be borne by the radio industry.

Is it DocklAnds or Docklnds?

Have you noticed that some people call our suburb DocklAnds while others prefer to drop the final A and pronounce it Docklnds?

So which is correct? And why the different pronunciation? We want to hear your view on the correct way to pronounce Docklands.

May Survey

DocklAnds or Docklnds? Tell us at www.docklandsnews.com.au/sayit



We are incredibly confident with our property management services, so we are offering all new listings an enticing 50% rebate on your first 3 months of management fees.

To take advantage of this fabulous offer, mention this advertisement to Clare Moloney on 0418 11 99 55

ph. 03 9600 4988

Suite 10, 198 Harbour Esplanade, Docklands, 3008 e| clare@jcstreetrealestate.com.au



10,000 new neighbours for Docklands

Docklanders are to get 10,000 new neighbours when the planned E-Gate development starts to take shape from 2014.

Construction of the new eco-suburb is due to start the moment that major tenants BlueScope Steel and OneSteel move out when their leases expire in November, 2014.

And Major Projects Victoria project director James Troedel says it could even start earlier if the site becomes available.

E-Gate comprises about 20 ha of land bounded by Dudley Street, Footscray Rd, Moonee Ponds Creek and the railway.

Unlike Docklands, the suburb's community infrastructure will be delivered in advance and the vision is for medium-rise buildings, very few roads and plenty of open space.

With some 45 per cent of the land area currently being earmarked as public realm and a variety of housing styles on offer, the emphasis is residential but could also include more than 100,000 sqm of commercial development focussed mainly at the city end of the site.

Mr Troedel said: "We are trying to create a wide demographic in the area so we want to create housing that would suit a wide range of people, such as families."

"We are working on the premise that, for a good sustainable community, the more of a mixture the better."

Mr Troedel pointed out that no decisions had yet been taken by Government but that a business case based on a sustainable "eco-village" had shown the concept was viable.

The concept is for a self-contained community, centred around a central civic square with pedestrian and cycle connections with both West Melbourne and Docklands.

The new suburb would be well served by public transport with a pedestrian bridge to North Melbourne Station and a new tram service extending beyond Docklands up Footscray Rd and terminating at the central square.

Another pedestrian bridge is proposed to cross Dudley Street and extend walking and cycling access into Docklands via Digital Harbour.

Digital Harbour developer David Napier is ecstatic about the potential benefit of the new suburb to Docklands.

"The introduction of E-Gate shifts the centre of gravity in a northerly direction," he said. "I



An artist's impression of what might be possible at E-Gate.

believe the geographic centre of Docklands will move to the middle of Etihad Stadium."

Mr Napier said a critical mass of local residents would at last activate the retail aspects of NewQuay. And he said the provision of community facilities including potential primary and secondary schools would start to change the Docklands demographic too.

ING Real Estate CEO Greg Boyd agrees and sees the adjacent Waterfront City precinct of Docklands as already providing critical retail and general service amenity that now, with the greater certainty on the future of E-Gate, can be readily reviewed and enhanced to further stimulate local residential demand.

Mr Boyd believes that the proposed E-Gate density could be increased and he urged the new government to approach the development from a regional perspective. He said ING would welcome an opportunity to speak directly to the authorities about the project.

Mr Boyd encouraged the Government to consider 2014 as "tomorrow" and said it needed to urgently tackle the preliminary

works required to ensure it was in a position to hit the ground running the moment the site became available.

The concept plan allows for schools, although Mr Troedel said this was ultimately to be decided by the education department. The department is currently looking at the entire region for school sites.

Mr Troedel said housing in E-Gate would utilise 3.8 metre ceilings. He said this would allow the structures to be re-purposed in the future for commercial use if that was desired.

"We want the buildings to last 100 years and there's no way we can predict what the future uses will be," he said.

"We also looked at the concept of being highly sustainable. The model has been worked up using the principles of sustainable energy and sustainable water use," he said.

One idea is to install a salt barrier in Moonee Ponds Creek and harvesting fresh creek water for use in the development and to also create some freshwater wetlands.

Major Projects would also like to develop

the other side of Moonee Ponds Creek and is keen to play a role in the City of Melbourne's vision for a continuous park along the creek.

It is not yet clear whether the development will become the responsibility of a soon-to-be-announced urban renewal authority.

"An urban renewal authority is obviously being mooted and the exact nature of that, we don't know," Mr Troedel said. "They might be our stakeholder. We might work for them or they might take it over. I don't know."

In the meantime, Major Projects is pressing on with re-housing the current tenants, refining the plan and tackling the associated planning issues such as rezoning, conditions and subdivision matters.

"Although you can't see it happening, there is a lot of work being done," Mr Troedel said. "It hasn't been formally adopted by Government but the Planning Minister has indicated that he's keen to get on with it."



Comment on this story online:
www.docklandsnews.com.au



Chloe & James' red carpet experience!

"Some real estate agents need to chill out"

"When we were selecting an agent, we found some agents were just too intense and intrusive. It felt like we were being stalked, but Barry Plant Docklands were professional from the beginning. They went above and beyond our expectations."

Call Barry Plant Docklands today for a free market appraisal

T 9936 9999 E docklands@barryplant.com.au

Your red carpet experience

BarryPlant
Your red carpet experience

No clues on Harbour Esplanade's future

VicUrban and the City of Melbourne are working on the future of Harbour Esplanade but any public consultations are still some way off.

The Docklands Community Association is concerned that decisions may be made before residents are consulted. But VicUrban says that, at this stage, there is simply nothing to consult on.

"It's time for VicUrban to come clean on what they've got in mind for development of the Esplanade from the road to the waterfront," said DCA president Roger Gardner. "They've had 10 years to think about it. We don't expect detailed plans but we are entitled to know the broad concept by now!"

"The last thing we want is for this precious open space to be handed over to developers for yet more buildings. It must be retained as open space for everybody including residents, workers and visitors. It needs to be converted to parkland."

VicUrban and the council meet weekly to discuss the options and it is likely that some concrete proposals will be included in Second Decade of Docklands initiatives which are due for release mid-year.

Docklands News understands that the City of Melbourne is seriously pushing for a return of the historic sheds that were removed in 2000 to open up Melbourne's waterfront. The sheds were put into storage and council planners want them back.

It is understood that the council is keen on market-type activities for the sheds.

The DCA is also concerned that nothing more has been announced about options for Western Park, under the Bolte Bridge at NewQuay West.

DCA president Roger Gardner said: "We seem to be getting nowhere with the development of Western Park. Options have been put forward for months. The Melbourne Football Club made a presentation to the DCA in early February."

Mr Gardner said he was frustrated that the DCA had not been given details by VicUrban about the other two proposed uses of the park

– an ecological park or a recreational park.

"This is an important issue for residents because of the lack of parkland in Docklands, but the area continues to lie idle and derelict. Surely until such time as the fate of the area is known, VicUrban could at least have it cleaned up, levelled and mowed and a couple of seats put in so that the public can use it."

Docklands News understands that a bid by the Melbourne Football Club for an elite training facility may be languishing in an effective stalemate.

With decisions on the future of the area due to be released as part of the mid-year Second Decade of Docklands announcements, the Demons have not progressed its negotiations with VicUrban.

From VicUrban's perspective, it wants to see whether Melbourne has attracted the necessary finance before spending more time developing the option. And, from Melbourne's perspective, it wants some guarantees that its bid is the preferred one before it can effectively raise the money.

MAB Corporation is also heavily involved in the negotiation, having effectively given up the right to build a residential tower to accommodate a MCG-sized football ground.

It is understood that MAB may have been promised the right to build a tower elsewhere, probably at Waterfront City where it is due to announce it will be taking over development from ING Real Estate.

The Docklands community has been invited to again meet the council and VicUrban on May 11 as part of the continuing Second Decade of Docklands consultation.

See our story on Page 11 for further details.



Comment on this story online:
www.docklandsnews.com.au



The united colours of Docklands

Docklanders have been intrigued by the 50m super-yacht Tribu which arrived at Central Pier before the March Formula 1 Grand Prix.

Tribu was built in 2007 by Italian fashion billionaire Luciano Benetton and is special in the super-yacht world by being the first such vessel to be built to environmental green star standards.

As well as impeccable eco-credentials, Tribu is also notable for its robust and practical design. She has been compared to a navy frigate or, as Mr Benetton is quoted as putting, a Land Rover of the seas. But, of

course, on the inside, Tribu is sheer luxury.

Italian magazine *Yacht & Sail*, quotes Mr Benetton as saying: "It was the idea of the journey as a way of learning and exploration that pointed me in this direction."

"I wanted a functional boat fitted to my objective: to sail everywhere, even in difficult seas and in less than perfect conditions. A boat for taking to the open seas in security, comfortable but sober, with fundamental attention paid to functionality and to the needs of navigation."

Mr Benetton is reputed to have started his \$5.7 billion business empire by hawking on his bicycle sweaters knitted by his sister.

Docklands News can't tell readers why the yacht was in town and where she is heading to next.

DOCKLANDS THE SECOND DECADE

What is your future Docklands?

VicUrban and the City of Melbourne have been working together with the Docklands community to reflect on the last decade and plan for its second decade.

You're invited to meet the Docklands second decade team and to review and comment on the draft directions and priority actions that have been informed by community input.

When: Wednesday 11 May 2011

Time: 12.00pm to 7.00pm – Drop in at a time that suits you

Where: The Docklands Community Hub, Waterview Walk, Docklands

Presentations from VicUrban and City of Melbourne representatives will be held at 12.15pm and 5.30pm.

Please register to attend at www.docklandsseconddecade.com or phone 9658 9658.

The community's views will help shape the Second Decade of Docklands plan, which will include strategic directions and priority actions, to be released for final public comment in mid 2011.

VicUrban ►►

CITY OF MELBOURNE

State Government
Victoria

MELBOURNE
DOCKLANDS

Great deals on the cards for Docklanders

Destination Docklands and Docklands Chamber of Commerce have launched their new loyalty program – Docklander Deals.

Docklander Deals is an exclusive program only available to those that work and live in Docklands.

Free for cardholders, they will get special access to a web page listing offers from participating businesses. These offers will change monthly and the best offers will be emailed out to members.

Participating businesses will be able to target a captive audience with monthly offers, provide specials and other added incentives, attract new customers, maintain a solid customer base, improve customer loyalty and strengthen customer relationships.

Docklander Deals account manager Bill Reid will be visiting all Docklands businesses to personally tell them everything they need to know about the program and to sign them up.

The annual cost for a business to participate is \$350 (or \$250 for Docklands Chamber of Commerce members). Bill can be contacted on **0416 153 116**.

The program was launched at The Woolshed Pub on April 19.



For further information and to apply for membership, go to www.docklanderdeals.com.

Destination Docklands executive officer Michelle Kemp and Docklands Chamber of Commerce vice-president Elena Tsapatolis at the April 19 launch.



825 Bourke Street
Victoria Harbour, Docklands

(03) 9629 1005

Adi: 0430 271 516

283 Clarendon Street
South Melbourne

(03) 9690 1005

* Free delivery Conditions Apply

Open for lunch, dinner and
catering for all occasions

Mrchi
Indian

Halal Certified
Licenced BYO
(wine only)



Artist's Impression

Waterfront Display Open Daily 10am-5pm. 24 NewQuay Promenade Docklands.

INSPIRED HARBOUR LIVING

The Quays fuses harbourside ambience with inner city sophistication and the indulgences of a modern luxury resort. Complete with health club, swimming pool, providore, Residents' Club, board room, rooftop garden and tennis court, The Quays sets a stunning new benchmark in contemporary harbour living.

Superb one, two and three bedroom residences available.

THE QUAYS

Call Rachael on 1300 137 590
www.the-quays.com.au

MAB

MELBOURNE DOCKLANDS

VicUrban

NewQuay



Docklands 214 / 67 Spencer Street
GRAND HERITAGE AT ITS FINEST
1 Bed 1 Bath 1 Car

Private Sale \$540,000
Inspect By appointment

Live amidst the grandeur and sophistication of Melbourne's iconic Grand Hotel. This centrally located and majestic building is truly one of a kind. With a palatial staircase, cavernous hallways, luxurious heated pool and botanic gardens; you would be hard pressed to find a better building for this spacious one bedroom apartment to be located. Featuring floor to ceiling windows and a large bedroom located on the apartments mezzanine with a spacious bathroom attached; you cannot argue with the unique style that this apartment brings.



Docklands 720 / 555 Flinders Street
GREAT VIEWS, GREAT LOCATION
1 Bed 1 Bath

Private Sale \$400,000
Inspect By appointment

A perfect opportunity to snap up a generously sized modern apartment on the corner of Flinders and Spencer Street. With a spacious balcony boasting picturesque views of the Yarra river, and ideally located within walking distance to the Melbourne CBD, Southbank Promenade, Crown Casino and public transport— it would be hard to find a place more suited to inner city leisure and lifestyle. Featuring a high quality range-hood, cook-top, oven and dishwasher; this near to new apartment also includes BIR, window furnishings, European laundry facilities and intercom.



Docklands 1212 / 8 McCrae Street
GREAT VIEWS, PRICE & LOCATION
1 Bed 1 Bath 1 Car

Private Sale \$410,000
Inspect By appointment

This spectacular 12th floor apartment is located in the V1 Docklands complex which is situated within walking distance to the Melbourne CBD, Southern Cross Station; Melbourne's famous Crown Casino & Entertainment Centre and for those sports lovers, Etihad Stadium is within sight. Combining modern fittings, this apartment has a large spacious open plan living room, generously sized bedroom and bathroom with conveniently designed kitchen and a sizeable balcony boasting great views over the Yarra River and Southwharf.



Docklands 1707 / 8 McCrae Street
VIEWS AS FAR AS THE EYE CAN SEE
1 Bed 1 Bath 1 Car

Private Sale \$670,000
Inspect By appointment

This 17th floor open plan apartment is modern, spacious and comfortable. With 2 generously sized bedrooms, a walk in wardrobe plus a study, 2 well sized bathrooms and an undercover car park, this apartment is sure to please. With uninterrupted panoramic views over the entire CBD skyline, this impressive residence provides sensational open plan entertaining spilling onto a fabulous city view enclosed balcony with glorious north eastern sun. Facilities include a large outdoor swimming pool and BBQ area



Docklands 3602 / 288 Spencer St
NO.1 FOR VIEWS & LOCATION
2 Bed 1 Bath 1 Car

Private Sale \$580,000
Inspect By appointment

This luxurious & spacious brand new two bedroom apartment located on the top floor in the newly completed Atlantis building comes fully furnished and presents the latest in inner city living. The unit features a modern kitchen with stainless steel appliances and ample cupboard space that opens to a dining/living area which leads to a balcony with spectacular bay and Dockland views. Coming fully furnished as part of the purchase price, this apartment is great for an investment or perfect for someone just starting out in Melbourne.



Docklands 210 / 53 Spencer Street
GRAND HERITAGE AT ITS FINEST
2 Bed 1 Study 1 Bath 1 Car

Private Sale \$740,000
Inspect By appointment

Centrally located and dominating in presence this distinguished building offers majestic stair case, float about in the luxurious heated pool and spa and saunter about in the palatial gardens. Enjoy the grand life with an apartment that is approx 100-sqm in size with an open plan living, dining room boasting soaring windows and large separate kitchen. Located on level 2 you have this rare opportunity to purchase in this outstanding building and fully capitalize on both the opulence and investment on offer. This apartment is available to owner occupiers and investors.



Docklands 607 / 60 Siddeley Street
IDEAL FLINDERS WHARF ADDRESS
3 bed 2 bath 2 car

Private sale \$1.1 m
Inspect By appointment

Perfectly located on the North bank of the Yarra is this impressive 6th floor, light filled apartment with a large terrace, sits directly in front of The Melbourne Exhibition Centre & Polly Woodside. Consisting of 3 bedrooms (the master with private ensuite), a modern and stylish Miele kitchen, which is perfect for entertaining family and friends, also with fully equipped gymnasium, steam and sauna rooms, spa and swimming pool. Close to public transport, along with the city, and all the exciting Docklands precinct has to offer. The property also comes with two secure car parks.



Docklands 1704 / 109 Clarendon St
FANTASTIC VIEWS OF BAY & CITY
2 bed 2 bath 1 car

Private sale \$590,000
Inspect By appointment

Enjoy magnificent views of Port Phillip Bay and the city lights from this superbly appointed brand new apartment. Two great sized bedrooms, master with ensuite and walk in robe, a well equipped stylish kitchen, modern bathroom and spacious living area. A heated indoor spa and well equipped gym complete this superbly located Southbank apartment situated within walking distance to Melbourne CBD, Southbank Promenade, Crown Casino and Docklands..



Docklands 1402 / 8 McCrae Street
UNINTERRUPTED WATER VIEWS
2 Bed 1 Bath 1 Car

Private Sale \$520,000
Inspect By appointment

This high demand and splendid 2 Bedroom 1 Bathroom 1 Car Space apartment is now available. The apartment consists of views towards Yarra River and Port Philip Bay. Included are two sizeable bedrooms, fitted with good quality window furnishing, stylish contemporary bathroom, stainless steel appliances, European laundry facility, heating/cooling unit and drawer dishwasher.



Docklands 402 / 60 Siddeley Street
MASSIVE ENTERTAINERS TERRACE!
2 bed 1 bath 1 car

Private sale \$620,000
Inspect By appointment

This amazing apartment with private and unique outdoor space set right the Rivers edge with sensational views will put everything else at second place! Spoil yourself in the middle of the city with a 'suburb size' back yard! Relax in the spacious living/ dining area. Cook up a feast in the modern and functional kitchen with stainless steel appliances, glass splash backs and granite bench tops. Enjoy two good size bedrooms, both with BIR separated by a large and stylish bathroom. Combine an additional toilet and separate laundry facilities.



Docklands 412 / 67 Spencer Street
A 'GRAND' OPPORTUNITY
1 Bed 1 Bath

Private Sale \$420,000
Inspect By appointment

Amidst the grandeur and sophistication in one of Melbourne's finest buildings, a one bedroom apartment is now on offer to the discerning investor. Currently leased to the 5 star rated Grand Hotel, the mezzanine apartment offers a functional and spacious floor plan. The large bedroom complete with BIR, ample cupboard space and huge bathroom dominate the higher level. An open plan kitchen/living/dining area on the lower level is further complemented by soaring windows extending views towards the CBD.



Docklands 1502 / 50 Lorimer Street
THIS WILL NOT LAST LONG
3 bed 2 bath 2 car

Private sale \$970,000
Inspect By appointment

The quintessential sophistication in high-rise apartment living! Perched high on level 15 this stylish beauty boasts breath taking city views from every angle of the spacious open plan living areas. Comprising a slick and stylish gourmet kitchen including the combination of both stainless steel and stone finishes, 3 sensational bedrooms with built in robes, main with huge en-suite. Further features include massive entertaining balcony, separate laundry, ducted heating/ air conditioning, 2 secure car spaces and plenty of internal storage.



Glenn Donnelly
MANAGING DIRECTOR – SALES
E glennnd@cityresidential.com.au
M 0419 998 235

Shop 5 / 60 Siddeley Street, Docklands
www.cityresidential.com.au

For all your real estate needs, including a
no obligation FREE market appraisal on your
property, feel free to contact either of us

Richard Mindroui
MANAGING DIRECTOR – LEASING
E richardm@cityresidential.com.au
M 0437 250 964



Get used to asphalt footpaths

Docklanders disappointed with the finish of the pavements in the re-constructed Harbour Esplanade need to get used to asphalt.

According to VicUrban the asphalt finish was dictated by the City of Melbourne's policy of using only bluestone or asphalt.

And, while most of the CBD's streets are paved with smartly-cut bluestone, it seems Docklands needs to get used to the cheaper option.

It appears apparent that council will be taking every opportunity to replace Dockland's concrete pavements with crude road-making techniques.

In its *Place Management Plan for Docklands* which reports on July to December last year, the council complains about the expense of maintaining “cream coloured” pavers.

"While designs are generally compliant, the practicalities of material choices need to be reviewed," the report said.

"For example, the ongoing nomination and installation of 'cream coloured' pavers in both road and footpath areas needs to cease. This is a major maintenance cost issue for council into the future."

“It is also a source of considerable concern

for resident groups from an amenity and presentation perspective. Their position is understandable and is considered reasonable.”

"Council's preference is sawn bluestone for the main street footpath areas however this cost is one that developers do not accept and have so far refused to change this position. Cost wise, this is understandable," the report said.

The president of the Docklands Community Association Roger Gardner said light-coloured paving at NewQuay needed more cleaning maintenance, but this did not mean that asphalt was preferable.

"We like the light colored paving which clearly is more attractive than asphalt," Mr Gardner said. "It does, however, show up dirt and stains more as a result of which we have requested council to carry out more frequent cleaning."

“Council’s Citywide contract provides for quarterly cleaning only of footpaths but that is totally inadequate for light colored paving and we have had to resort to removing some stains ourselves.”

“Council is not happy however with the associated cost increase which apparently is causing them to review the type of paving used in new works. Some would argue however that the use of light-colored paving should be retained in appropriate places because of its attractiveness despite the extra maintenance cost.”



Whacky worm meets whacky tourists

A group of 41 international roller coaster enthusiasts descended on Docklands' humble Whacky Worm ride at Wonderland Fun Park last month.

The US tourists made a special arrangement to ride the worm as part of a rollercoaster tour of Australia.

Organiser Robb Alvey said it was the ambition of some within the group to ride every rollercoaster in the world.

"A lot of people with us want to ride every roller coaster in the world," he said. "It doesn't matter whether the coaster is 100 feet tall or not. If there's a roller coaster out there then we have to ride it."

Mr Alvey runs roller coaster tours all over the world but this is the first time he had brought coaster fans to Australia. He has run tours in the US, Europe, Japan and China and is soon to venture to Dubai and Brazil.

The business started about 10 years ago from his own personal interest in trying to visit all the US roller coasters.

"People said, 'that's sounds really interesting, can I come on your next venture,'" he said.

He said many of the enthusiasts worked in theme parks or related entertainment fields.

So how does he characterise the group of tourists? "They are all insane! That's how I characterise them," he answered.

The group arrived by bus directly from Melbourne Airport and were going on to Luna Park. The Australian tour lasted 11 days.

Wonderland Fun Park purchased its Whacky Worm about a year ago, importing the modest ride from the US.

In a technical sense, it is characterised as a “family” roller coaster and can be easily dismantled for road transport and reassembled in a short time.

Council to assist boat owners

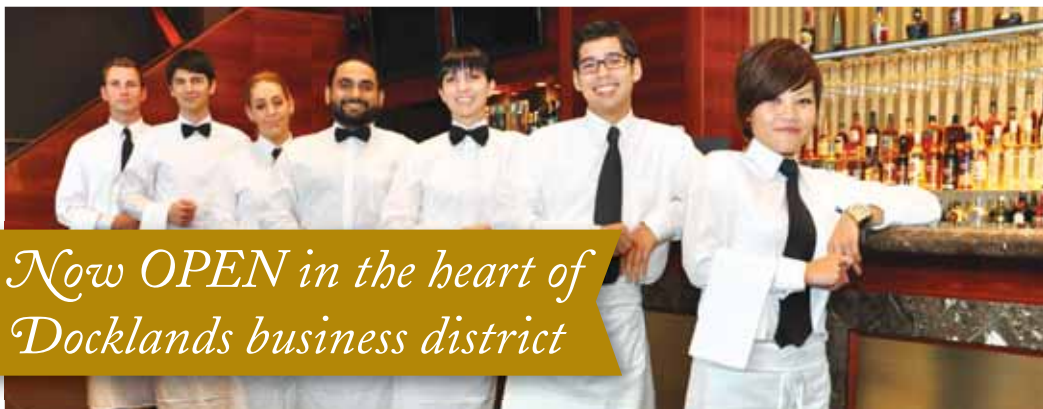
The City of Melbourne is looking to compensate boat owners at Yarra's Edge where recent floods have resulted in a massive litter problem and associated clean up bill.

Cr Peter Clarke said it wasn't fair that users of Marina YE faced the clean up bill when the litter had come from miles away upstream.

He said river currents meant that litter became trapped in the Yarra's Edge Marina.

Cr Clarke said councillors had determined in principle support for financial compensation and that a report would be prepared for formal consideration.

SAN FRANCISCO • DALLAS • TUCSON • MELBOURNE



*Now OPEN in the heart of
Docklands business district*

{ GND FLR, NATIONAL FOODS CENTRE
737 BOURKE STREET, DOCKLANDS

CALL 9642 3350 FOR RESERVATIONS
OPEN 7 DAYS LUNCH & DINNER

AMPLE & EASY PARKING AVAILABLE | NESTLED BETWEEN COLLINS & BOURKE STREET

Bob's
Steak & Chop House
Established 1993

EMBRACING *the* LEGACY *of the* FINEST TRADITIONAL STEAK-
HOUSE EXPERIENCE, BOB'S STEAK & CHOP HOUSE COMBINES
the WARMTH *of* AMERICAN HOSPITALITY WITH CULINARY
EXCELLENCE & SUPERB LOCAL AUSTRALIAN PRODUCE.

*{ Come and experience Bob's Steak & Chop House,
and you'll see why we are a cut above the rest. }*

Consultants appointed

VicUrban has appointed consultants UrbanTrans to prepare a transport model and sustainable transport strategy for Docklands.

Acting Docklands general manager Simon Wilson said UrbanTrans was an acknowledged industry leader in developing integrated transport strategies with both the public and private sectors.

"VicUrban looks forward to working with UrbanTrans, the community and key Government stakeholders on this important project," Mr Wilson said.

The Docklands Transport Model will take into account existing and future development and infrastructure proposals to provide traffic predictions, forecasts of public transport usage and an analysis of pedestrian and cycling patterns at key stages of Docklands development.

Building on the Transport Model, the Sustainable Transport Strategy will examine the key issues and influences on access and mobility at Docklands, to identify the priority transport projects and initiatives required in Docklands over the next 10 years and beyond.

It is expected to be complete by September.



An Alma labour of love

Volunteer Francis Crome is restoring sailing ship Alma Doepel's 198 wooden "blocks" in Shed 2, Victoria Harbour.

During the wind and sail era, the "block maker" was the first to start and last to finish and it is no different during the restoration of the heritage schooner.

Each block has to be pulled apart and sanded to be inspected, repaired and varnished. The steel strops are re-galvanised and sheaves are cleaned, serviced and refitted.

Each block is fitted with the ships name plate

and an identity tag and is tracked through the repair process from start to finish.

Francis says these are not the ship's original blocks but they are over 30 years old and most are made from elm. Francis spends two to three days a week on the Alma Doepel Restoration Project.

Alma Doepel now in her 107th year is a three-masted topsail schooner originally built as a shallow drafted coastal trader in Bellingen on the NSW North coast.

For more information visit the website www.almadoepel.com.au or contact Tony Spencer to arrange a tour for your group on **0418 313 816**.

DOCKLANDS + NEWS NETWORKING LUNCH

June Lunch

There are places available for the June Docklands News Networking Lunch, to be held at the Hilton, South Wharf on Friday, June 17.

Our guest speaker will be NewQuay project director David Allt-Graham who has agreed to speak about MAB Corporation's future plans for Docklands.

The lunch will be the eighth quarterly networking event. It starts at 12 noon with tapas in Sotano and will move into Nuevo at 12.30 for a sit-down meal.

The lunch costs \$60 and bookings can be made by emailing lunch@docklandsnews.com.au. Booking and payments for the June lunch need to be made by June 10. For further information, ring **8689 7979**.



victoria harbour pharmacy+news

We have a huge range of Products & Services, including:

- | | | |
|-------------------------|--------------------------|----------------------------|
| ⊕ PBS Prescriptions | ⊕ Newspapers & Magazines | ⊕ Cosmetics & Perfumes |
| ⊕ Vitamin Supplements | ⊕ Giftware | ⊕ Skin & Hair Care |
| ⊕ Same Day Dry Cleaning | ⊕ OTC Medications | ⊕ Digital Photo Processing |
| ⊕ Greeting Cards | ⊕ Tattsлото | ⊕ Post Supplies |

LOCATED OPPOSITE TO SAFEWAY

66 Merchant St, Docklands

Ph: 03 9629 9922 ⊕ **Fax: 03 9629 9933**

Email: vicharbourpharmacy@nunet.com.au

Open Monday To Saturday

8am - 8pm Mon to Fri

9am - 1pm Saturday



Book your
END OF FINANCIAL YEAR FUNCTION
at Platform28

**CALL NOW
@ 9670 9933**

or email: INFO@PLATFORM28.COM.AU
PLATFORM 28 - 82 VILLAGE ST, DOCKLANDS

Open for breakfast, lunch & dinner 7 days.
Find us on: [facebook](#) [twitter](#)

PLATFORM28.COM.AU

We practice responsible service of alcohol.

Looking for the forest amongst the trees



Docklands thinking revealed on May 11

VicUrban and the City of Melbourne want to show the Docklands community on May 11 what they are thinking for Docklands' second decade.

They are hosting a special day at the Hub, 80 Harbour Esplanade, to reveal draft directions and actions and listen to responses.

The day is part of the Second Decade of Docklands consultation which has been running since last July and is due for final public comment by mid-year.

The authorities say that define strategic directions and actions will emerge.

The Lord Mayor, Cr Robert Doyle, is urging the community to review the draft directions and actions and make suggestions about how they might work for local people and businesses.

"We need to bring life and vitality into the spaces around Docklands built form and the local community has that valuable insight to share in how we can achieve this together," Cr Doyle said.

VicUrban and the City of Melbourne have revealed that while the Second Decade plan will include both long-term and short-term

outcomes, it will also seek to deliver more immediate outcomes such as improved pedestrian connections, increased events and greater promotion of the area as a waterfront destination.

They say community input is invited on the draft directions, and they want help to prioritise actions for delivery such as temporary and permanent uses within existing open space areas.

VicUrban's acting general manager for Docklands, Simon Wilson, said the community event formed part of the continued conversation with Docklands.

As part of the engagement process,

VicUrban and the City of Melbourne have also met with CEOs and representatives from Docklands' business community, government agencies, developers and other special interest groups, to gather their feedback on the draft strategic directions and priority actions.

The May 11 session will be open between 12 noon and 7pm. Presentations will be made at 12.15pm and at 5.30pm.

For more information about the Second Decade of Docklands Project, or to register to attend the community day please go to www.docklandsseconddecade.com or phone 9658 9658.

**MR SOLD
SAYS...**

TOP TIPS

- **RENTERS** continue to be squeezed as the deteriorating outlook for home affordability pushes up demand for rental properties.
- House rents increased in every capital city except for Sydney, Melbourne and Darwin, a report by property data collection agency RP Data found.
- Rents increased by 1.4 per cent nationally and 2.7 per cent in the capital cities over the past 12 months.
- With limited purchasing activity based on concerns about affordability, we are likely to see increasing demand for rental properties.



Century 21
Waterview Docklands

Director: Ali Abbas
M: 0423 231 374
E: aliabbasc21@century21.com.au

831a Bourke Street, Docklands 3008
T: (03) 9620 5888 | F: (03) 9614 8577
www.century21.com.au/docklands

Tourists not yet stopping

The bus stop for the Melbourne Tourist Shuttle at the corner of Bourke St and Harbour Esplanade has been overlooked in the recent redevelopment.

However, City of Melbourne engineers say they will find a new location.

The stop outside Victoria Point in Harbour Esplanade has become a left-turning lane.

A City of Melbourne spokesperson said: "Following the completion of road works on Harbour Esplanade in Docklands, the Tourism Shuttle bus stop will be reinstated, however not in the exact same location."

"City of Melbourne engineers will assess the area to determine the best new location for the stop. A timeline for these works has yet to be determined."

Port tours on again

The Port of Melbourne Corporation is again conducting boat tours of the port for Docklands residents this month.

The free two-hour tours will be leaving Boatman's Landing on Saturdays, May 14 and 21 at 9.30am, noon and 2.30pm.

Attendees must pre-register online at www.portofmelbourne.com/community/tours.asp or by phoning 1300 857 662.



Stadium gets intimate

Etihad Stadium has launched a new "Intimate Mode" configuration, which will give the venue the ability to stage arena events, concerts and functions like never before.

Intimate Mode is created by 20 metre high and 180 metre wide drapes, which are hung from the roof. The configuration allows the stadium size to be reduced, while still using a portion of the arena as well as seating on all three levels.

It will cater for events such as banquets, cocktail parties and gala dinners for up to 5000 people as well as concerts and major arena functions for up to 23,000 patrons.

Additionally, the stadium will have the ability to provide all aspects and requirements for Intimate Mode events including draping, lighting, staging, production and event management.

Etihad Stadium CEO Ian Collins said the new Intimate Mode concept would give the stadium more versatility with regards to staging events.

"Etihad Stadium has a proven track record of hosting large arena events such as AFL and international sport as well as major arena concerts and events for up to 70,000 patrons. The new Intimate Mode will allow us to cater to a different market and provide an opportunity for events of any size," Mr Collins said.

"We see Intimate Mode as another innovation that will allow us to stand out from the crowd."

Docklands to host landscape competition

More than 120 participants will race the clock in a real-time rapid architecture and design competition in Docklands in July.

Melbourne Landscape Urbanism 72 hour Urban Action is an architectural and design festival that generates interventions in public space within an extreme deadline, a tight budget and limited space.

Architects, designers, craftspeople and local citizens will work in 10 teams over three days and nights to design and construct a site in response to a challenging brief that asks competitors to re-design the city from bottom up.

Melbourne Landscape Urbanism 72 hour Urban Action runs from July 25 to 30 as part of the Victorian State of Design Festival.

Some 10 sites have been selected throughout Docklands. An additional five sites will be utilised by professionals invited to design and construct their projects prior to the start of the 72 hour urban action event.

The Melbourne event has been inspired by the first 72 hour urban action project which took place last year in Bat-Yam, Israel.

For further information see www.72hourmelbourne.com.au

Now open

New health clinic in Docklands

All your travel health needs in one spot **plus** a range of other services

Lifestyle assessments: heart health, diabetes check, wellbeing check
Convenience primary care | Skin checks | Stress management
Psychology | Corporate health services | Nutrition & diet advice

Level 4, 700 Collins Street, Docklands
Open Monday to Friday 8.30am – 5.00pm
Call 8622 6333 | Email docklands@traveldoctor.com.au

Little Assets

#1 in Early Childhood Education

Quality environments and stimulating learning opportunities for children aged from 3 months - 6 years

ALL ABOARD

The educational journey starts here

Melbourne City
Ground Floor, World Trade Centre
18-38 Siddeley Street
9620 2887
melbournecity@littleassets.com.au

www.littleassets.com.au



NewQuay residents Kaye and Ron Morgan (back couple) and Anne and Alan Williams (front couple) at the launch. Photo courtesy of Eamon McCarthy.

Dock-Hearts up and running

Local art project Dock-Hearts was successfully launched last month.

NewQuay resident Merrin Eirth has an evolving project emerging in the window of local cleaning contractor Leo Papagiannis in Rakaia Way.

Merrin said of the launch at Berth on April 13: "When we took our walk to the site, the most exciting aspect was the interaction the children demonstrated re my sample of the magic light wall. They had a ball and wanted to stay on for some time afterwards to play with it."

"Passers-by seem to be engaging with the project, with plenty of folks peering in to see what is going on. I couldn't be more delighted."

"I am hoping that during this next phase I will be able to encourage some interest from owners of vacant shops and similar stakeholders to come forward and become involved in further art residency/business partnerships."

Docklands to get new kiosks

Docklands can expect to see flower and fruit kiosks, food vans, and newspaper kiosks following a new council street activity policy.

The council says it wants new forms of street activity to create connections between Docklands and the CBD. It will be investigating Harbour Esplanade and Victoria Harbour near Collins St as potential sites for flower and fruit kiosks.

But they say the kiosks won't be installed unless they are commercially viable.

A council spokesperson said the City of Melbourne would consult with key affected stakeholders and carry out a feasibility study.

"Pending the approval and allocation of capital funds, the City of Melbourne would design, fabricate and install the kiosks," the spokesperson said.

Last May the council installed an \$87,000 newspaper kiosk in Bourke St outside the NAB building but, as yet, the kiosk has remained closed.

The council said this was because: "Internal adjustments and fit out is being organised by

the proposed permit holder. In addition, the opening has been delayed due to the road construction works for the redevelopment of Harbour Esplanade."

"As soon as the works in that area are complete and fabrication of the internal structure is completed, the kiosk will open for trade," a council spokesperson said.

The new policy was endorsed at the Future Melbourne Committee last month and covers street trading activities including busking, flower, newspaper and fruit kiosks, spruiking, handbill distribution, street markets, street cylinders, horse and carriage operators and fundraising.

The Lord Mayor Cr Robert Doyle said the new policy would set a new benchmark for street activity in the city and provide clarity for Melbourne's street traders, workers, visitors and residents on how future street activities will enhance people's experiences on our streets.

"Great streets make a great city and this policy is all about making Melbourne's great streets even greater," Cr Doyle said.

"When people walk through our city, we want them to have a pleasant experience and building on Melbourne's existing street trading culture will add to our reputation as a world class city."

Open 10.30-5.30
Shop 3G 439 Docklands Drive
Phone: 9547 8575



New to Docklands - RED CHARM HOMEWARES & GIFTS



TOMLINSON

9971 6600

PLUMBING

P

- ▲ Property maintenance specialists
- ▲ Burst pipes
- ▲ Gas fitting
- ▲ Rain water tanks
- ▲ Solar hot water
- ▲ Hot water units
- ▲ Heating & cooling
- ▲ Taps, toilets & cisterns
- ▲ Spouting, downpipes & roofs
- ▲ Backflow testing
- ▲ Thermostatic mixing valves
- ▲ CCTV colour inspections
- ▲ High pressure drain cleaning



Green Plumbers
 Member of Master Plumbers' Association

www.tomlinsonplumbing.com.au

THE VIBE, THE STYLE,
THE FOOD

VICTORIA HARBOUR

Come in for Happy Hour
Tues - Friday 5pm - 7pm
\$10 Cocktails Thurs & Fridays *



Victoria Harbour is located at the end of Collins St. by the Yarra River

HARBOUR TOWN



Harbour Town is located Opposite the Southern Star Wheel

Come in Mon - Frid
for our \$10 Lunch Time
Woodfired Pizza Special*



THE Groove TRAIN

Two great locations here at the Docklands. The Groove Train is the ideal dinning experience, offering you a selection, of Mediterranean, European and Asian dishes to choose from.

BREAKFAST / LUNCH / DINNER
FUNCTIONS / BAR / CAFE

*Instore conditions apply

1300 GROOVE
www.groovetrain.com.au

DOCKLANDER

A portrait of a middle-aged man with short, grey hair, smiling broadly. He is wearing rectangular glasses and a brown V-neck sweater over a light-colored, patterned collared shirt. He is standing outdoors in front of a modern building with a curved, glass-and-steel facade. The sky is clear and blue. The lighting is bright, suggesting a sunny day.





MEEHUB

noodle & sushi cafe

Trading Hours
 Mon – Sat: 11 - 8
 Sun: Closed

Tel: 03 9670 6886

**Shop 10, 4 Waterview walk,
 Docklands 3008**

Chef's Main Course Suggestions: Salt & Pepper Squid,
 Honey Pepper Beef, Chilli/Satay/Garlic Prawn, Cantonese Beef
 More new dishes available, please come in to see our menu

SPECIALS

Any 2 dishes from hot food bar (S) **\$6.90**
 with fried rice or fried noodle (L) **\$7.90**

Fresh Sushi hand rolls from **\$2.30**
 Main Dishes from **\$13.80**

All fried
 noodles &
 noodle soups
 cooked fresh
 to order



Catering function available,
 please come in or call for enquiry

Chocolate coloured rush for Shed 4

Docklands will be coloured chocolate on August 13 and 14 when the nation’s chocoholics descend on Shed 4 for the Chocolate Rush Festival.

The festival is entering its fourth year, but it will be its first in Docklands.

The biannual festival aims to educate, indulge and challenge people’s palates and teach them all there is to know about chocolate.

Expect to see Australia’s finest chocolatiers and pastry chefs all ready to share their secrets, skills and knowledge with the visiting chocoholics.

Attendees will be able to discover everything they have ever wanted to know about chocolate combining a respect for tradition, fantasy and attention to quality. It’s about the cocoa bean and how it is produced, how it is seen, the sound as it snaps, the aroma, the texture and most importantly the taste!

Some of the highlights of Chocolate Rush this year include hands-on workshops, a masters at work series, the Great Chocolate Debate, kids hands-on workshops, the chocolate market, industry workshops for professional development and a live industry chocolate competition.

For more information, see www.chocolaterush.com.au.

Four lucky winners

Four lucky shoppers have each won a \$300 family pack from Waterfront City.

Zoe Barrett, Alicia Bardsley, Yoke Lam and Paul Lam have won the packs which consist of a family pass to ice skate at Medibank Icehouse for two adults and two children including skate hire, a \$50 Harbour Town Shopping Centre voucher redeemable at nominated Harbour Town retailers, a family ticket for the Dinosaurs Alive exhibition, a family pass for unlimited ride wristbands at Wonderland Fun Park and a \$50 dining voucher.

To be informed about future competitions, readers are encouraged to become online subscribers at waterfrontcity.com.au.



Yarra’s Edge a welcome sight

Yarra’s Edge was a very welcome end of the track/river for 800 competitors in the inaugural Marysville to Melbourne Multi-sport Challenge on April 10.

The grueling 155km trek saw competitors run across Black Saturday fire-affected mountains, road cycle and then paddle a kayak down the Yarra River in a single day.

About 100 competitors were still paddling after dark, making the event a lonely experience for many. But the big crowd at Docklands was a welcoming sight for exhausted competitors.

The event raised money for the Berry Street

charity and participants contributed to the Black Saturday fire-affected area through monies spent over the race weekend.

Luke Haines from Geelong was the first man home in 7 hours 53 minutes. The first woman to finish was Elizabeth Dornam.

A police team led by Commissioner Simon Overland did well finishing mid-field with the police chief demonstrating his kayaking skill and good fitness to bring the team home to Yarra’s Edge well before dark.

Plenty of networking

Docklands businesses have plenty of networking on offer in May.

On May 5, Servcorp is presenting *Ant Hill* magazine editor James Tuckerman on “ShiFt Happens: An Ant’s Tale” and on May 12 Jesuit Social Services is presenting Frank Brennan at the first in a series of public *Just Leadership* breakfasts at NAB.

Just Leadership aims to develop a community of people from organisations across the Docklands and beyond who want to be part of social leadership and collaboration.

Servcorp’s free event is from 5.30pm at level 2, 710 Collins St. The \$15 Just Leadership event is from 7.15am in the NAB auditorium, 800 Bourke St.

For further information on the Servcorp event, email Fiona Hoppe on fhoppe@servcorp.com.au. And for the Jesuit event, call 9427 7388 or email justleadership@jss.org.au.

And don’t forget the \$60, June 17 Docklands News Networking Lunch at the Hilton. Email lunch@docklandsnews.com.au.

Docklands’ designer awarded

Docklands’ original designer Graeme Gunn has been awarded a gold medal by the Australian Institute of Architects.

In 2000, Mr Gunn was appointed principal design adviser to the Docklands Authority and later become principal architect and design adviser to VicUrban.

In accepting architecture’s highest award in Perth on March 24, Mr Gunn was reportedly not particularly proud of Docklands.

The Australian said: “He candidly acknowledges the failure of private development in Melbourne’s Docklands to achieve lively city streets, a situation he believes is about to improve with the greater involvement of public professionals.”

“I believe it will turn around,” he says. “It is difficult to build something new with all that vitality and grain. There is the potential now for something more intensive, pedestrian-friendly and intricate.”

Owning a small business, you’re probably familiar with taking risks, albeit calculated ones. But when it comes to making your corporate presence felt, don’t risk your reputation. Only Servcorp Virtual Offices give your business the best platform to take it to the next level. From only \$100 per month, Servcorp will help you look the business with the best dedicated support team and business services available anywhere, online, so you’re ensured your reputation stays the right way up! **Call now on (03) 9097 1630** or visit servcorp.com.au and you could win a free year of Virtual Office Services.



RISK: HAVING YOUR BUSINESS
REPUTATION TURNED ON ITS HEAD.



CUISINE UNDERCOVER

INDEPENDENT REVIEWS FROM DOCKLANDS' PHANTOM DINER

Byblos

I love it when you stumble across something new in Melbourne, particularly when it's right smack bang in the middle of it.

In fact I have to admit I felt a bit stupid, not even knowing this prime bit of waterfront real estate had opened up to the public (and no, Neil Mitchell, I'm not talking about Docklands in general ...)

I'm talking about the World Trade Centre Wharf. For almost a year now, a slick looking bar has been operating behind that rather messy and hard-to-navigate entrance into the WTC, Crowne Plaza Hotel and police headquarters, where Spencer St, Flinders St and Wurrundjeri Way seemingly collide. But step behind this urban mess and whoa-oh! Another little piece of Melbourne's riverfront is now adorned with tables spilling out onto the water's edge.

The Wharf Hotel has recently been recently

joined by Byblos – which cut its teeth in Brisbane and is now offering “a modern taste of Beirut” for those willing to venture up stream.

It looks fabulous – all Lebanese artefacts and dusky gold and pink hues going some way towards compensating for the lack of sunlight its southern facing orientation affords.

Gorgeous looking booths line the river-facing window – which unfortunately we were denied, being only a party of two and, I can only presume, not good-looking enough – because, come on, it was already after 1pm and there was virtually no-one else there.

A glass of sparkling rose from Burgundy put an end to the sulking, as did perusing a menu that I really enjoyed reading. Not only did the food all sound delicious, but the various banquet combinations and the extensive list of cocktails, beers and wines all sounded nothing short of fun.

Despite making us feel ugly, the waiter did go on to be very helpful and talked us through the menu. Faced with almost too much to choose from, we went with the exceptionally good value Platter for Two

(\$60), comprising a generous serving of hommos (no giggling please), tabouleh, and a selection of pastries and meats.

Despite initially fearing four pastries each might be a little bit much, each had such wonderfully different flavours and textures, they all went down a treat.

The Rekakat – flaky and light, encasing feta, mozzarella and Lebanese spices were a particular stand-out. The dip was earthy and thick, the tabouleh refreshing and light, and the meat – ooooooh, the meat. Juicy. Succulent. Smoky. Divine.

I often fear that meat on skewers will come out tough and sporting a generic barbecue flavour, but the lamb in olive oil and Lebanese spices, and the chicken marinated in garlic, coriander and lemon juice, put my barbies to shame.

I won't lie – I am not a fan of rose water and as the majority of desserts featured it. I went with the not-so-Lebanese offering of chocolate pudding. It was however, delicious, with a thick and rich sauce bursting forth from the centre that probably eradicated the need for the side serve of

chocolate sauce – but who's complaining? Guess I won't be thin and glamorous enough for one of those window booths any time soon ...

Whatever. Byblos is, technically, just outside of Docklands, but for many locals it will still be closer than the CBD and yes Mr Mitchell, like Docklands, it will probably benefit from being that little bit quieter than other waterfront destinations for some time yet – so make the most of it while you can.

Overall rating ★★★★★

View all our Docklands restaurant reviews and rankings online at www.docklandsnews.com.au/review

Lamore
DOCKLANDS

CATERING & FUNCTIONS

From basic to complicated, we have all the options covered.

OPEN:

Mon-Fri 12.00 – 10.00

Sat 4.00 – late

Sun 9.00 – 1.00 & 4.00 – late



Book your special event today.
Check out our specials for
Mon, Tues and Weds

♥
LAMORE RISTORANTE ITALIANO

768 Bourke St, Docklands
Tel: 9600 2377 Fax: 9600 4388
www.lamoredocklands.com.au



GREETINGS FROM THE DOCKLANDS COMMUNITY ASSOCIATION



Hello again to everybody. I hope you had an enjoyable Easter and a welcome break.

The latest Harbour Esplanade work makes one wonder what's going to happen next. Now that the repositioning of the tram tracks is virtually finished, there is a gaping long stretch of space on the western side between where the old tracks were and the foot/bikepath beside the raised wide concrete area which extends to the water.

The width in parts to the water is 70 metres or more and it stretches from Bourke St to New Quay.

Clearly, extra car lanes could have been fitted in but it's too late for that, unless the new trees could be moved back.

So what's to become of the long empty section which you can now walk along? We would expect that it will be consolidated with the present concrete area into a large public space and parkland incorporating a bike and foot path.

VicUrban keeps saying it doesn't have plans ready yet, but it could at least tell us in broad terms.

Presumably, the project will take years to complete. So what's going to be done with the long empty space in the meantime? Come on VicUrban, give us something to go on!

With lip service being given to public consultation, a big concern is that it will all be worked out behind closed doors and the public presented with a fait accompli. We certainly don't want it sold off to developers!

Regarding public consultation, following representations from CoRBA, the combined

resident's group, the Lord Mayor has arranged for representatives, including myself, to meet with the council's CEO in May.

Further comments regarding the lack of action in determining the development of Western Park are contained in a separate article in this edition. We are calling for a temporary clean up of the area to enable people to make use of it in the meantime.

On the social front, we are organising a social night for members to be held at the end of July. Details will be provided in due course.

More free boat tours run by the Port of Melbourne Authority are scheduled for May and details will be supplied.

We are continuing to forward details of other activities as they arise including those held at the Hub community centre.

In the next edition I will be talking about the need for developers to consult with

adjoining residents before they start a new building construction.

If any reader wishes to become a member of the DCA or has any suggestions they wish to put forward they are welcome to do so by contacting us on **docklands.community.association@gmail.com**

If you would like to talk to me about any aspect you are welcome to call me on **0412 097 706**.

You can keep up with things on our website **www.docklandscommunityassociation.com**

Sincerely

Roger Gardner
President DCA

WORDPLAY FROM DOCKLANDS WRITERS

FEATURING THE TALENTS OF THE DOCKLANDS' WRITERS GROUP

The Victim

By Sasha Beatie

My car was almost driving by itself as I wearily navigated through the darkness.

A sudden flicker of movement was caught in the headlights and I braked with a curse as the jolt of adrenaline surged through my limbs.

Feeling certain I'd hit whatever it was I got out and shakily checked the front of the car. What lay on the bitumen before me was not what I'd expected. Bewildered, I knelt and picked up the victim of my absent-mindedness. Light as a feather and so amazingly beautiful I became consumed by the swell of deep shame and pity that caused my stomach to clench.

I carried it back to the car placing it carefully on the passenger seat desperately hoping it managed to survive. I wasn't usually so emotionally charged but after my rough and rugged day I couldn't deny how unsettled I was at having ended the life of a living, breathing creature. I remembered how full of remorse I'd been after hitting a wayward rabbit, but this was different. This just seemed so wrong.

My senses were on full alert as I drove the

rest of the way home. I glanced down occasionally, futilely praying that it would be alright.

When I pulled into the drive I gingerly picked it up again. Totally limp I couldn't see it breathe and it hadn't moved since I'd initially hit it.

I raced inside with my hands shielding the tiny body as I went straight to the kitchen and used several tissues to lay it ever so gently on the bench.

Alone, with only the moonlight shining through the window, I was overcome by the sudden urge to cry.

My six-year-old daughter wandered into the kitchen yawning and rubbing her eyes. I barely noticed her until she was at my elbow.

With her voice slightly croaky with sleep she said, "Is the fairy dead, Mummy?"

Join Docklands Writers. For info contact: **rose@grahammercer.com.au**



For consultation contact numerologist Sarang Dhawan on **sarangdhawan@yahoo.com**

Soccer predictions for May 2011

Sunday, May 1

Arsenal v Manchester United

You would expect Manchester United to win but expect the unexpected in this match as Arsenal adds up to number two and the date of match is the first. Both numbers go well, so expect a Arsenal win or a close draw.

Sunday, May 8

Manchester United v Chelsea

This seems to be an interesting match. I see a struggling time for both teams and there might be a extreme result in this match. Chelsea will have a slight edge or might end up with a draw.

Monday, May 9

Fulham v Liverpool

Any guesses in this match? Everyone must be thinking Liverpool will win but the numbers say the opposite. It's a day for Fulham to win or a draw. The explanation is that Fulham adds up to nine and so is the day of match the ninth. So that's lucky for Fulham and they will win or draw .

Saturday, May 14

Blackburn Rovers v ManUnited

The day of this match adds up to five, which is one the luckiest numbers for Manchester United as it adds up to number eight. This match will go easily to Manchester United .

Sunday, May 15

Chelsea v Newcastle United

Expect anything in this match as the numbers are in favour of both teams. The blue colour will bring luck to Chelsea and they will overcome a struggle and make it a win (but draw can't be ruled out).

Arsenal v Aston Villa

Well this match seems a tough one with everyone expecting Arsenal to win. But the numbers are nicely even for both teams and there is a great chance of a draw.

Sunday, May 22

Everton v Chelsea

This match is again a tough one as Everton adds up to the number seven and so does Chelsea. The date is also lucky for both the teams so a draw can't be ruled out for this match. The jersey colour blue will bring luck for Chelsea and they might cling onto victory in the end.

Manchester United v Blackpool

Blackpool has a definitely edge in this match and it seems luck is more in favour of Blackpool as May 22 adds to four and Manchester United adds to eight and in numerology four and eight don't go well. So expect the unexpected in this match.



What *With* Women *Abby* Want *Crawford*

Everything aches. My arms ache, my legs ache, my neck aches. My hands ache, my back aches, even my toe aches. But it's a good ache. It's ache from hard work, from determination and from constant trips to Bunnings.

But I did it. By myself. No man required. (Although I do think having a man would have avoided my toe ache, on account that I actually put the fridge down on it trying to move it away from the wall. I'm not saying a guy would have done it better. It's pretty hard

to put the fridge down on anything but your toe, but it wouldn't have been MY toe).

You see, I've painted. I have painted walls, doors, ceilings, skirting boards and trims. I've accidentally painted some carpet, and I've painted the windows shut ... but hey, it's about looking at what has gone right, and learning from what didn't go quite so right, so next time (as if there's going to be a next time - I ache!) you'll know what to do differently.

Like anything in life, you might ache from the effort, but the only way to really live life is to jump in and give it a go. Then have a drink, and celebrate your efforts, no matter how it turns out!

So here are a few pointers I can share with you. Don't look up and roller paint the ceilings, with your mouth open. Nope. And

it's no point trying to paint the ceiling whilst looking at the floor. That's how the TV got painted.

Here's another one - don't leave the open paint tin at the bottom of the ladder. Stop laughing, it can happen.

And no matter how often you see professional painters with a tin on top of their ladder (to avoid the "bottom of the ladder" pitfalls), trust me - paint just travels further from a great height ...

But here's the big tip. You will feel so fantastic when you've given your home a makeover, it will be worth all the pain.

You'll sit back and just feel so proud. And you will have achieved such a great goal. You can look around imagining all the good times ahead, after all the love you've put into

your newly renovated rooms, and the aches will feel worth it.

In fact, it will inspire you to keep going, to keep painting and making everything fresh and new. It's exciting, it's exhilarating and it is so very rewarding.

And you know what else I noticed? The more my body ached from painting, the less my heart ached from the past. The more of myself I poured into my own project, my own goals, my house - the more I was content with who I am and what I wanted. I might just have fixed my own heart, by fixing the walls around me.

Whatever you want to achieve, just believe you can do it. It's worth the ache.

Till next month,

Abby xx



DOCKLANDS FASHION

Finding and keeping cosy this winter

By Nicola St John

Melbourne is getting cold, but there's no need to focus on the days getting shorter and the nights colder, when the Autumn/Winter 2011 collections are here to make you feel cosy and deluxe.

The Finders Keepers market, held last month in Shed 4, followed on from the Loreal Melbourne Fashion Festival in keeping Docklands up with the latest trends. With a lot less champagne and stilettos, the markets emphasised the importance of the handmade, original up-and-coming design and a quirky craft aesthetic.

Taking knitting to a new level were Otto and Spike with the coziest looking hats and scarves. Their traditional techniques mix with a modern, off-beat feel to create inspired textural pieces.

Colour was bold, as we have been seeing a lot of this season, and their bright prints use motifs inspired by street signs and the culture of Melbourne's Brunswick.

Their "local" scarf lists numerous signs of restaurants and locations in Lygon St and Sydney Rd, showing an intimate knowledge of the area and creating a sense of community that you can wrap warmly around your neck.

Another stand-out from the market and a key look this season was the cape, made by the team at Encouragement Award. The Little Red Riding Hood-inspired design is a perfect trans-seasonal piece - layer with some cosy merino wool, long-sleeve tops to keep yourself nice and warm, or pop the detachable hood.

Encouragement Award creator Nikki Jones is one Melburnian who loves winter.

"I think we are all really spoilt when it comes



to winter fashion in Melbourne because there are so many clever designers making beautiful scarfs, knitted socks, jackets and everything you could ever need," Nikki said.

The Finders Keepers market follows a growing trend of consumers who are looking for a handmade local option in fashion. As

many stall-holders heralded the craft revival, it seems sitting by a fireplace, knitting a chunky red scarf could be the perfect idea for the upcoming winter.

For more information about the designers and upcoming markets see www.finderskeepers.com.au





Looking for something?

DocklandsDirectory.com.au

What to do

Where to stay

Where to Eat/Drink

Beauty, Health & Fitness

Docklands Services

Where to Shop



DOCKLANDS FASHION



Fashion on the streets of Docklands

Victoria Zschommler

LOCATION

NewQuay

WEARS

Blue pea coat.

DESCRIBE YOUR OUTFIT?

I think it's a look that's getting into winter and the Melbourne spirit.

WHAT BRINGS YOU TO DOCKLANDS?

I work as a photographer at Yervant.

WHERE ARE YOU FROM?

Richmond.

WHAT IS YOUR FAVOURITE THING ABOUT AUTUMN?

It's sounds really corny, but it's the leaves changing colour. I'm originally from Queensland and we don't have that there so I really enjoy watching them change in Melbourne.

WHAT DO YOU THINK MAKES A GOOD OUTFIT?

I think something that is unique and individual. I try to steer away from the same stores and prefer to go op-shopping because that way you know that no one else has it.

Johnny Giovanoglou

LOCATION

Harbour Town

WEARS

Wrangler skinny jeans, vintage knit jumper and Blundstone boots.

DESCRIBE YOUR OUTFIT?

I love hardwearing boots and winter woollies. My jumper is so soft and warm, its comfortable and keeps things casual.

WHAT BRINGS YOU TO DOCKLANDS?

I am working here as a visual merchandiser.

WHERE ARE YOU FROM?

St Kilda.

WHAT IS YOUR MUST-HAVE ITEM FOR WINTER?

A good coat is a Melbourne staple. Whether it's a trench or a wool coat, it just has to be good quality to see you through the winter season.

WHAT DO YOU THINK MAKES A GOOD OUTFIT?

Confidence. You can pull off almost anything when you can wear it well.

Karina Ruscigno

LOCATION

Harbour Town

WEARS

Lili cardigan, That Store jeans and Tony Bianco lace-up boots.

DESCRIBE YOUR OUTFIT?

I like to have fun and keep things funky.

WHAT BRINGS YOU TO DOCKLANDS?

I work here at Harbour Town.

WHERE ARE YOU FROM?

Tullamarine.

WHAT IS YOUR MUST-HAVE ITEM FOR WINTER?

A fur scarf or anything made from fur! It's so luxurious.

WHAT DO YOU THINK MAKES A GOOD OUTFIT?

You have to have style. As long as you can put things together well, and have an eye for fashion, you can make anything into a good outfit.

I ♥ THE NIGHT LIFE

By Sean Rogasch

Looking for somewhere to enjoy an after-work drink accompanied by world-class water front views?

Docked, a great new bar and restaurant right here in Docklands should be your next stop.

Tucked in on the southern corner of the stadium concourse, the first thing I noticed upon approaching the Spanish Tapas bar and restaurant was the incredible view.

If you're lucky enough to snag yourself a window table, as I was, you will enjoy a glass of sangria (or one of many specialty wines) with stunning views of our wonderful district all the way out to the Bolte Bridge.

Although I am not against a glass of wine at any time of day, sunset is the time you should indulge in Docked. It is simply breathtaking.

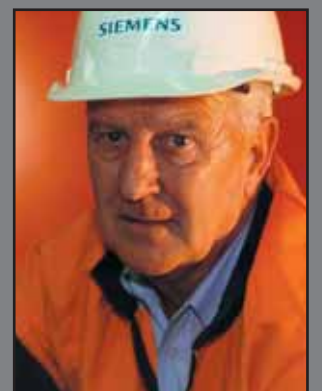
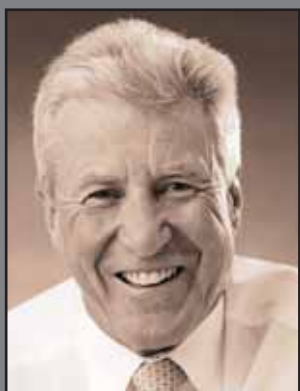
The view is one thing, but if your not fully convinced it won't be long before the energetic, enthusiastic and all-round-lovable owner of Docked, Dominic Anthony will have you on side.

Dom has a huge presence in the restaurant. He is across what every one of his staff members is doing, yet still has time to treat you as if you're the only person in the place.

Docked gives Docklands something that's been missing – cool factor. It has a European summer feel and is the perfect escape as Melbourne's cold wintery weather starts to kick in.

The intimate feel that Docked provides does mean that Friday night bookings are starting to become essential, so make sure you give them a call before you head down. Trust me, it's well worth it.

Make sure you're one of the first to try out this not so hidden gem, because once the footy crowd discovers it, most of Melbourne will be wanting to join in on our European summer escape.



david b simmonds photographer

M 0418 328 710 | E studio@simmonds.com.au | Wwww.simmonds.com.au

advertising • corporate • industry • aerals • architecture • skylines • panoramics • portraits
food • stock images • fine art • décor print gallery • Based in Port Melbourne

Letters to the Editor



Send your letters to
news@docklandsnews.com.au

Council needs to recycle

We should all be concerned about the treatment of Ms Sandra Lobley for the way her employer apparently deals with the subject of recycling.

The Federal Government, the State Government and our local council, I hope, are all promoting recycling as a priority.

However that promotion has not reached everybody. Some companies, like Springmount Services and some revelers at night time.

I still don't know why we are having the two chrome-plated containers standing next to each other all over the place, one for general rubbish and the other for recycling. These are provided by our council.

However, and here comes a surprise, even the council staff looking after those containers emptying them, seem not to know what they are supposed to do.

I have made the following observation: On weekends early in the mornings an open tray truck is driven throughout Docklands and both the rubbish and recycling containers are emptied together on to that truck (with out any wind protection).

I have also observed in Merchant St during a weekday: A council dump truck stopping next to the two bins there and the driver tipping the content of both bins into his dumper.

I don't think that when those trucks return into their depots, that there are people waiting there to sort all that mess out. It will most likely end up in the land fills or in furnaces.

I admire the stand of Sandra Lobley and ask her, to keep up the good work.

Karl B

An unmitigated disaster

Today (a beautiful one) a friend and I wandered around Docklands for a couple of hours – something I've done at least 15 or 20 times in the last 10 years. When I say that I think the best it has ever looked was before the site was cleared, and then when it was completely cleared, you would probably think I am joking. The tragic thing is, I'm not.

The development of Docklands has been one continuous disappointment. From the moment the large stadium went up, cutting the city off from the river, a once in a lifetime opportunity to connect to the river was lost. And the lack of vision and sensitive planning which has blighted the whole project has continued ever since.

Basically Docklands was divided into areas, each given to developers who were told to develop. What developers do is build tall buildings. There is so much more to planning than just putting up tall buildings. Where are the transport routes - private (cars etc), public (even the tram routes that were built are now being altered as testament to how badly they were initially laid out), bike and walking tracks (not in any thought-out way), parks, gardens, lawns, areas for relaxation (forget it).

I can imagine the whole place with the waterfront being treated as a foreground to friendly walking and bike tracks, to lawns and garden beds, with music and drama stadia, with public statuary, with children's playgrounds, and so on, all to the water's edge. Then, say, low-rise restaurants, public facilities like crèches, library, art galleries and the like. Behind these would be road and transport routes, and then, where

appropriate, the tall buildings for office, private dwelling and public use. This is the sort of planning seen in so many other places - some in this country, many elsewhere (think the south side of the Brisbane River, both banks of the Torrens in Adelaide, and the Swan in Perth, for example).

But to repeat myself, none of these things exist in the present Docklands, except tall buildings, in most places almost to the water's edge, and in others separated by vast uneven, bare, windswept concrete expanses. I've yet to speak to anyone (apart from the self-interested) who sees Docklands as anything but an unmitigated disaster.

On pp 16 and 17 of your Issue #63 you have two photos entitled "What a difference 10 years makes to our fledgling suburb. Until I read the labels, I was hard-pressed to guess which was the later version. I still don't see the "Now" picture as any more attractive than the "Then" one. There's virtually no greenery visible in either, and no feeling of a harmonious, well-thought-out precinct in the now one. It's really tragic.

Is it too late? Probably. But the only hope the place has is to stop putting up more and more tall buildings, and to get some real planners, with real vision and understanding of what waterfront sites could actually be like, and give them the job.

Brian Simpson

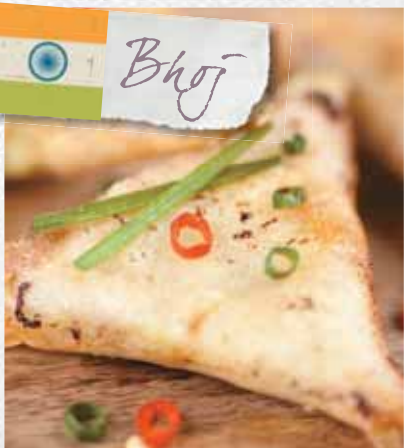
TrikeMan BillBoards

Grand Openings ✓ Sporting Events ✓ Product Launch ✓ Music Festivals ✓ Trade Shows ✓ Conventions



Call today for a free quote: **03 9600 4552**
756a Bourke St Docklands





FOOD FROM FARAWAY PLACES. FIVE MINUTES FROM THE CITY.

With over 20 authentic international restaurants presenting flavours from all corners of the globe, NewQuay is Melbourne's premier world dining destination.

Choose from delicious Chinese, Spanish, Cambodian, Italian, Greek, Moroccan, Indian and more as you take your taste buds on a culinary adventure like no other, all spectacularly located on a gourmet promenade on the city's waterfront.

Where to discover more

A world of NewQuay dining information, including restaurant guides, menus, public transport info, parking, delicious dining offers and much more, awaits at newquay.com.au

NewQuay at Docklands

Harbour Esplanade & Docklands Drive intersection (close to Etihad Stadium).

SIX TASTY REASONS TO DINE AT NEWQUAY IN MAY

STEAKHOUSE

Steak Lover's Special

Two courses for \$38.50 (main + entrée or dessert).
Three courses for \$44.90

Valid Monday to Friday, Lunch only. Valid from 1-31 May 2011. Some items excluded from special. Not valid for groups over 15 people or with any other offer, event or discount. Not Valid Public Holidays. Please notify your waiter if you will be taking advantage of any special offers.

66 NewQuay Promenade | ph: 9640 0808

LIVEBAIT

Livebait Lunch

Two courses for \$38.50 (main + entrée or dessert).
Three courses for \$44.90

Valid from 1-31 May 2011. No further discounts apply. Not valid for groups over 15 people. Not valid special event days or public holidays. Not valid with any other offer, event, discount. Please notify your waiter if you will be taking advantage of any special offers.

55B NewQuay Promenade | ph: 9642 1500

MECCA BAH

Mecca Bah Midday Special 50% off Tagines and Pizzas

Monday to Friday, Lunch only. Valid from 1-31 May 2011. No further discounts apply. Not valid for groups over 15 people. Not valid special event days or public holidays. Not Valid with any other offer, event or discount. Please notify your waiter if you will be taking advantage of any special offers.

55A NewQuay Promenade | ph: 9642 1300

SHIRAAZ INDIAN

\$29.50 Buffet, All-You-Can-Eat

More than 40 food varieties to choose from – Soups, Entrées, Salads, Mains and Desserts.

Dinner 7 Nights and Lunch Fridays
(Thali lunch from \$14.50)

12-16 NewQuay Promenade | ph: 9600 0388

FUNKY CURRY

Happy Hour, \$1 off all Main Meals

From 2pm - 5pm, 7 days.

Full price mains from \$6.90 - \$9.90.

Not Valid Public Holidays.

19 Dopel Way | ph: 9670 1372

BROT

Coffee & Cake Special \$5.50

Brot's Gourmet Burger \$6.80

Fresh Rice Paper Rolls \$6.50 per serve

Fresh sandwiches, rolls and wraps
made to order every day.

28 St Mangos Lane | ph: 9670 3235



NewQuay



SPONSORED BY:



211 FERRARS ST, SOUTH MELBOURNE VIC 3205
T: 03 9699 4234 | F: 03 8610 2102
WWW.PETSTOCKSOUTHMELBOURNE.COM.AU

Smudge rules in the city and the country

Meet Smudge the Shih Tzu-Poodle cross who rules NewQuay Promenade.

Smudge has lived in the Nolan for the past two years and, according to owner Anastasia Walsh has very few self-esteem issues.

"He has to be the ruler of the pack," Anastasia said.

Smudge is so called because when he was a pup eight years ago, he was so small that he would have easily become a smudge on the floor should he have found himself under someone's shoe.

He has moved around a lot during that time. He has lived in the suburbs and now lives in an apartment where he feels right at home.

"He really is an indoors dog and never makes a mess," Anastasia said.

But it's not all indoors for Smudge. He gets

out at every opportunity and now regularly visits Trentham where Anastasia's mother has moved.

Smudge's best mate, Paddles the cat, has also moved to the country so there's plenty of playing and fighting when the pair are regularly reunited.

Smudge is a regular at The Lounge and prefers to walk around unfettered by a lead.

But no matter whether he is in the city or the country, one thing's for sure: "He acts like he owns the town," Anastasia said.



Comment on this story online:
www.docklandsnews.com.au



The Harbour Family and Children's Centre News

Excellence in Early Childhood Education

We are all busy with our daily lives and this is especially true for families. Sometimes we become so focused on what needs to get done that we forget about feelings - especially those of the children in our lives. Our bookshop has just received delivery of *Ourselves in Their Shoes*, a book for all parents using examples of real life situations from a child's perspective.



It was 1981 when *Ourselves in Their Shoes* was first published. Almost thirty years on, re-published in its third edition, it still provides a powerful message to parents, educators and adults who spend time with young children.

The book continued to receive accolades from early childhood professionals, long after the first and second editions were out of print. In the simple style of the very first edition, but updated to capture changes over time, Anne Stonehouse has re-delivered

practical, user-friendly language that provokes us to rethink our interactions with children.

Anne provides insights for parents, family members, educators and all adults in a unique manner, helping us to understand how children may feel as a result of our responses and actions.

Anne Houghton
Early Childhood Consultant, Gowrie Resources

**Pick up your copy today from
The Gowrie Resources Bookshop
1 Seafarer Lane, Victoria Harbour for ONLY \$14.95.**



mediation communications

Mediation Communications specialises in both community and professional projects.

BRAND DEVELOPMENT
PRINT PUBLICATION
COMMUNICATION DESIGN
WEBSITE DEVELOPMENT

latest website



Docklands Directory | www.docklandsdirectory.com.au

mediacomms.com.au

108 / 198 harbour esplanade
docklands, 3008
P: +61 3 9602 2992
contact@mediacomms.com.au





The naked church

The church is irrelevant, fake, hypocritical, judgemental, old fashioned and simply out of touch.

These are a handful of words that come to our minds when we hear the age old word “church.” It is perhaps no surprise then that many Australians are forsaking traditional religion quicker than you can say “pass me the hymnal”.

It may surprise you to hear that I agree with many of the sentiments about church and religion today.

There are far too many examples of “religious groups” who have substituted Christ and his leadership for a man-centred system of control, self-preservation, self-righteousness and social-disconnection. These clubs are not churches. They may look like a church, feel like a church, smell like a church – but in God’s eyes – they are not the church. These fake and phony churches grieve Jesus – and represent the antithesis of his mission and vision.

The church that Jesus is building is radically different than what we may expect.

For example in Matthew 5, Jesus gave a famous message declaring His people (the

true church) to be “*the light of the world. A city on a hill cannot be hidden. Neither do people light a lamp and put it under a bowl. Instead they put it on its stand, and it gives light to everyone in the house. In the same way, let your light shine before men, that they may see your good deeds and praise your Father in heaven.*”

When Jesus first spoke these words he envisaged the true church to be a growing and dynamic community marked by love, influence, sacrifice, adventure, courage, generosity, and strength.

As a “city on a hill”, the church is to be a vibrant community that stands tall in its generation – emanating a bold and powerful light for the good of all people, and the glory of God. This image not only gives a vision of what the church can and should be, but also shows us how we might recognise his true community.

While it is true that people are abandoning “institutionalised religion” – not all are abandoning Jesus and his vision. In fact, Jesus continues to be the most influential person who ever lived.

Just last weekend we witnessed hundreds of people gather to remember

and celebrate Jesus’ death and resurrection. In response, people gave their lives to Jesus and were baptised. I was encouraged to hear hundreds of stories like this. These people would not consider themselves “religious” but instead everyday men and women who are committed to a life of trusting and treasuring Jesus above all else. We are by no means a perfect church – but by God’s grace are seeking to be led by Jesus, lead like Jesus and lead others to Jesus.

In an upcoming series called “*The Naked Church*” – we’ll take an honest and open look at the glory and garbage of church life. Investigating one of the earliest Christian communities we’ll discover a church whose sex, lies, cheating, envy and selfish-pride would make for perfect viewing for late night reality TV show.

Their story not only highlights the pitfalls and dangers of “religious” life – but also will help us consider the place and purpose of the church.

Guy Mason is the pastor of City on a Hill. Located through the week in Docklands, it runs public services on Sundays (10am – Hoyts, Melbourne Central; and 6pm –

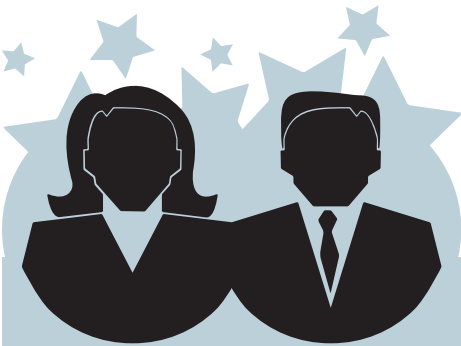
MADE IN HEAVEN WITH ANGELINA MAY

How compatible are you and your partner?

Check the astrological charts by emailing yours and your partners’ birthdate and time to heaven@docklandsnews.com.au

Is this love or lust?

What do you bring to the relationship and what gifts does your partner bring to you?



Kate Middleton

January 9 1982

Mars in Libra

Venus in Aquarius

Moon in Capricorn

North Node in Cancer

Prince William

June 21 1982

Mars in Libra

Venus in Taurus

Moon in Capricorn

North Node in Cancer

Gifts William is bringing to Catherine:

William naturally provides a positive influence on Kate in terms of her work. He teaches her to become healthy, organised, practical and by being close helps her understand how to process and integrate what is going on around her. She may at times struggle however to have the peace and down time she needs to recuperate.

Together:

Both Prince William and Kate have North Node in Cancer. They each take their responsibilities seriously with integrity and dependability.

Each has a giving spirit, are organised and competently take charge.

In a crisis, when others are floundering, these two are the ones who take charge, create order, and help everyone survive. This exaggerated sense of responsibility includes the belief that even if they delegate, they’re going to end up doing it all anyway ... their own way.

This can be seen already with Kate choosing to do her own make-up on her wedding day. There is also speculation that both William and Kate will be hands-on parents not taking advantage of the many resources open to them. They will take charge of their family and their home as much as possible.

Given that they don’t trust others to be able to support or give them what they need, it is interesting and understandable that they have chosen each other because together they may learn to let go and trust each other knowing they have found an equal.

As they mature both will start to soften and give more to those around them.

They each have a sense of compassion for those in need and will be very effective as heads of charities, as they bring not only compassion but also a strong dignity that will not allow them to get swept up in the chaos.

Featured terminology

Mars - The planet of energy, sex drive and anger. In women, it determines the qualities you look for in a man.

Venus - The planet that generally attracts love, money, creative activity. In a man it determines the type of women he seeks.

Gifts Catherine is bringing to William:

Kate teaches William all about partnerships. She will ensure that he put the focus and spotlight on the team rather than his own interests. This will be a blessing in the royal family where William at times will be challenged to listen to the views of his wife rather than the hierarchy. Co-operation and diplomacy will be the gift for William.

Possible conflicts:

If two people share the same North Node (as they do) they are learning similar lessons in life. Therefore, one of two scenarios can develop.

They can either indulge each other’s blind spots or continue in their unconscious dysfunctional behaviors, or they can consciously work together and gently help each other to rise above these self-sabotaging patterns. By choosing the path of mutual growth and pulling together to face the challenge of overcoming common obstacles, they can create a most exciting and satisfying relationship.

As both William and Kate have their North Node in Cancer, this can indicate that they both let each other get away with avoiding feelings and not being vulnerable. If they can work together to encourage each other to slow down, gain awareness, and reveal what they are truly feeling, they will develop true intimacy and satisfaction which they both long for.

Outcome of relationship:

Together through life’s trials they will both learn about compassion in their partnerships, not just with each other but with all.

Each of the partners has his or her own challenges and together they have the potential to fulfill the purpose of the relationship with tenacity, awareness and patience.

WHAT'S ON AT WATERFRONT CITY IN MAY

Autumn in Docklands continues to mean an exciting selection of activities and events. Whether you wish to escape to a prehistoric past with Dinosaurs Alive!, spoil mum with an unforgettable Mother's Day experience, join a high tech treasure hunt for a good cause or enjoy a lazy Sunday at our popular Sunday Market, Docklands is the place to be this autumn. Also, don't forget to secure your tickets to the action packed, nail biting 2011 Australian Ice Hockey League!

.....



Dinosaurs Alive!

After 65 million years, they're back... Dinosaurs Alive! is a new \$3 million interactive exhibition featuring seven life-like robotic moving dinosaurs who ruled the earth for more than 160 million years. Designed and built in Australia and Japan, the exhibition will be on show in Melbourne at Waterfront City Pavilion. Tickets may be purchased at the venue, or in advance through www.foxtix.com.au. Check the website for pricing information.

When: March 12th – May 8th 2011

Time: 10am – 4.30pm

Venue: Waterfront City Pavilion



Australian Ice Hockey League

This year will see history made at Medibank Icehouse when local newcomers, Mustangs, take on seven other teams from around Australia including last year's champions, Melbourne Ice in the 2011 AIHL season. Will the new kids on the block take it up to their cross-town rivals or will the Ice stamp their authority as the number one Melbourne team? This promises to be one enthralling winter... let the rivalry begin! For the schedule and tickets, visit www.icehouse.com.au.

When: April 14th – August 28th 2011

Venue: Medibank Icehouse



Chase the Cache

Some have said Chase the Cache may be the coolest treasure hunt since Captain Jack Sparrow was around. Others have said it could be larger than The Amazing Race. All we know is that you better have your shoelaces tied tight because Chase the Cache will be a charity event not to be missed. For more information and to register a team, please visit www.chasethecache.com.au.

When: May 22nd 2011

Venue: Harbour Town Shopping Centre

Cost: FREE



Mother's Day Gifts from Harbour Town Shopping Centre

Show mum how much you love her this Mother's Day, Sunday 8 May, with a gift from Harbour Town Shopping Centre at Waterfront City, Docklands. There are offers on fashion, lifestyle, home wares and beauty gifts especially for Mother's Day including an unbelievable special from Le Desire. Kids are also invited to participate in the exciting Mother's Day Competition to win movie, ice skating & theme park passes! Check the website for full details.

Venue: Harbour Town Shopping Centre



Docklands Sunday Market

Find a treasure and enjoy views of the City as you meander along the Waterfront City Promenade. The Docklands Sunday Market offers a range of arts and crafts. You'll find paintings, jewellery and much more from the talented craftspeople of Melbourne.

When: Every Sunday 10am – 5pm

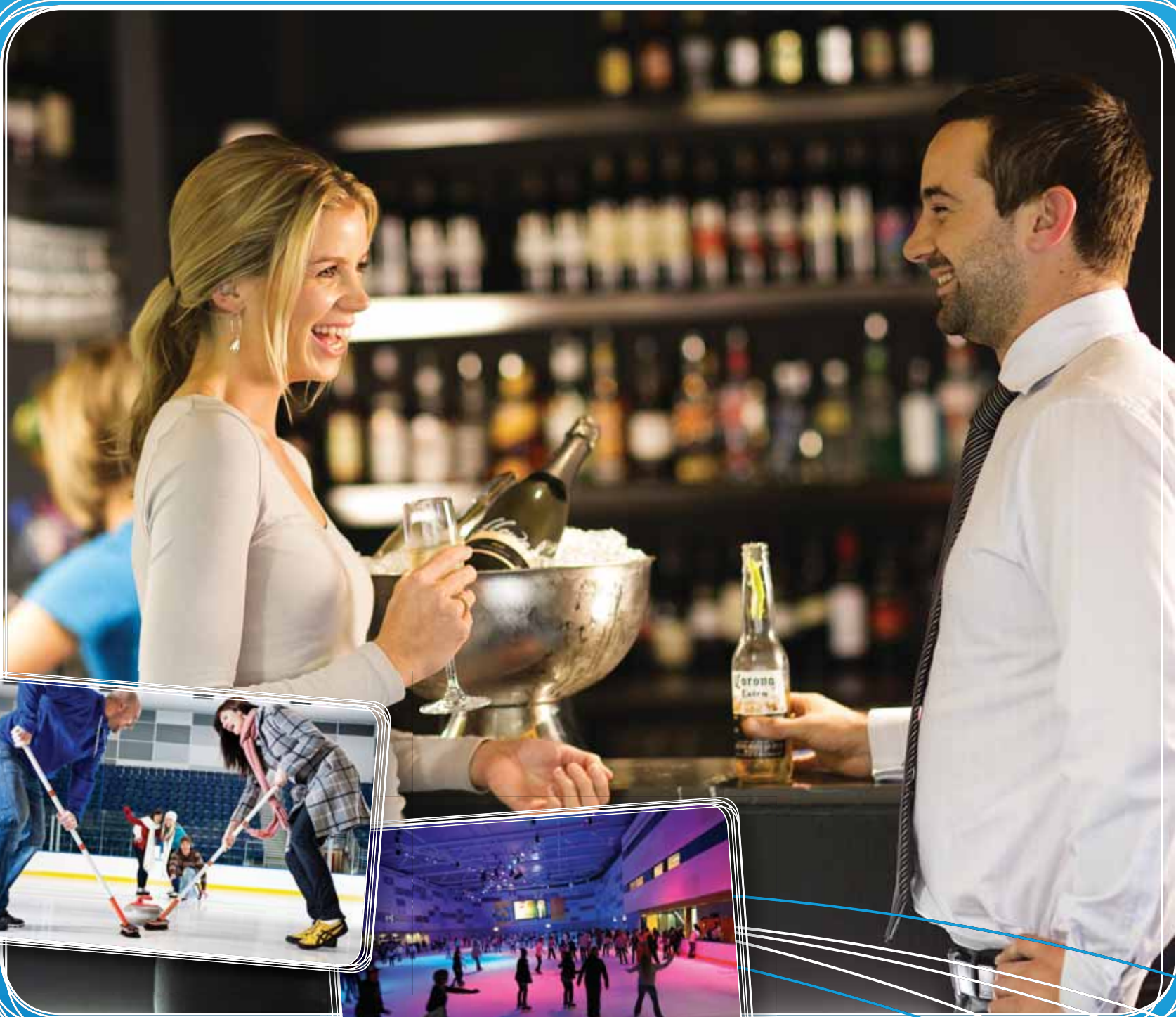
Venue: Waterfront City Promenade

Cost: FREE

Waterfront City is live on  **facebook**® and  **twitter**! So follow us online and subscribe to receive updates of everything that's happening at Waterfront City.

For further information visit our website www.waterfrontcity.com.au
Waterfront City, Docklands Drive, Melbourne Docklands. MEL REF 2E D4





Where cool meets clever!

Looking for a unique venue to host your EOFY function? Medibank Icehouse is the cool choice!

With a bar and function rooms looking out over the two Olympic-sized ice rinks you and your colleagues will be treated to a unique experience. On ice activities like curling, ice skating and Come and Try hockey are available for all levels of ability and fitness. Book your function now to avoid missing out on having the most memorable function this year.

105 Pearl River Road, Docklands
icehouse.com.au
Free call 1300 756 699

medibank icehouse 

Businesses in Docklands

DOCKLANDS-BASED BUSINESSES WISHING TO BE PROFILED IN THIS SECTION SHOULD EMAIL: ADVERTISING@DOCKLANDSNEWS.COM.AU

A GREAT DOCKLANDS STORY

The opening last month of Bob's Steak and Chop House in Bourke St is a great Docklands story.

International entrepreneurs Sanjay Chimnani and Shine Dighe looked at Melbourne, Sydney and Singapore as the location for the first Bob's outside of the USA and settled on Docklands.

The couple owns the licence for Australia, New Zealand and Singapore and researched deeply the best location for their first fine dining establishment. But nowhere else offered as much as Docklands.

Sanjay explained that they were looking for a location which would give them 70 per cent business clientele and 30 per cent local residential. They were close to settling on a location in the CBD, but the city doesn't have the same quality residential population as Docklands.

Similarly, Southbank and South Wharf didn't have the same magical mix as Docklands. And, while Docklands has many restaurants, it had nothing of the quality that Bob's now brings to the market.

"There was no real dining experience for the business population. There are no suits at NewQuay," Sanjay said.

Sanjay says it is often difficult for local people to see opportunities which are apparent to outsiders.

When the couple moved to Docklands two years ago, Sanjay could see a similar pattern of economic growth that he witnessed first-hand in both Hyderabad and Dubai.

Sanjay cut his business teeth in the challenging nightclub market in India and is used to doing business on a grand scale.

"Local people often don't see the opportunities that present themselves. You really need fresh eyes to be able to see clearly," Sanjay said.

"People have told us that we are mad opening in Docklands. But we are totally unperturbed that there is no one else here. We see it as an opportunity that we have got this market to ourselves."

"It will be hard work for the first six months but, at that point, we will be 18 months ahead of the game."

Sanjay and Shine simply love living in an apartment above Harbour Town. After their



initial stint in Docklands they started looking further afield at Brighton and Camberwell.

But when it came down to it, they couldn't stand the thought of living anywhere else and so moved to a bigger Docklands apartment.

"It's so convenient and so charming here,"

Shine said. "Sanjay points to our view of the boats in the harbour every morning and says 'this is a painting.'"

"This is truly the neighbourhood we want to live in," she said. "It is so full of life and there is so much happening here."

A SIMPLE NAME FOR GREAT FOOD

Former engineer Natdanai Chungyingruangroong's (Nat) passion for food and dining was just a pastime.

Until last year when a burning desire to start a business of his own led to the opening of his first restaurant, Nine Elephants.

Nat, his cousin Chavapon Theppadungporn and chef mate Tanachat Satitchantrakul opened Nine Elephants in October - and their mutual enthusiasm for food is clearly evident in the restaurant.

"Food is the most important thing," Nat said, stressing that, at Nine Elephants: "The emphasis is on the food and presentation."

For Nat, presentation is a big part of the dining experience. "We want people to know we care about the food," he said.

Nat also believes that the Thai food at Nine Elephants is among some of the most authentic on offer in Melbourne, saying: "If you can't find the ingredients in Thailand, we won't use them."

Although they hadn't first thought of



Docklands as the site for the restaurant, upon some investigation it became the obvious choice.

"We didn't want to go far from the CBD, and our real estate agent suggested Docklands," Nat said. "I believe it's going to continue to grow."

He also said the mix of workers for the

lunch period and residents for dinner appealed to them.

Nine Elephants is open for lunch and dinner Monday to Friday as well as dinner on Saturday and with happy hour (three beers for the price of two) and specials advertised on its Facebook page (www.facebook.com/nineelephants)

there are plenty of good reasons to stop in.

Lunch specials start from \$12.90, while dinner starts from \$16.90, plus they deliver in Docklands. So if you too are passionate about food, there really is no excuse not to get down to Nine Elephants and try it out.

FLEMINGTON VETERINARY HOSPITAL

FULL VETERINARY SERVICES PLUS

- Dental
- Weight Loss Clinic
- Puppy Pre School
- Hydrobath
- Ultrasound
- Endoscopy
- Boarding
- Kitty Kinder
- House calls
- Grooming

phone us to subscribe to our monthly email newsletter

ALL HOURS **9376 5299** OPEN 7 DAYS

visit us at www.flemingtonvet.com.au

187 Mount Alexander Rd (Cnr Kent St) Ascot Vale
(Ample off Street Parking)

Dr. Anne Dynon



Businesses in Docklands

DOCKLANDS-BASED BUSINESSES WISHING TO BE PROFILED IN THIS SECTION SHOULD EMAIL: ADVERTISING@DOCKLANDSNEWS.COM.AU

LOOK AT ME. LOOK AT MY TRIKE MAN BILLBOARD

For Alan “Trike Man” Maxwell, his small, part-time hobby has become one of Docklands most unique, vibrant and innovative businesses.

His Tours on Trike business started in 2007 and has steadily grown to the point where Alan sensed a new opportunity, noting: “The ‘look-at-me’ factor of the trikes made such a big impact.”

The result of much research and thought is Alan’s brand new business venture – Trike Man Billboards.

Having billboards displayed on trailers and driven around town is a relatively new form of advertising, and it is obvious that the Oztrikes are the perfect vehicle for such a medium.

Knowing he had to achieve the right balance between the trikes and billboards, Alan had Oztrike custom-build the trailers to ensure that they really complement each other.

“The trikes are the attention grabber, but the advertising billboards go really well with them. They certainly don’t get lost,” he said.



Alan is passionate about Docklands and, as such, really hopes local businesses are among the first to take advantage of his new idea, saying: “It’s open to everyone. We can structure campaigns for any-sized business.”

“We can target specific events. We go to where the people go, and can take your

company’s product or message with us,” Alan said.

As Trike Man Billboards manager Sasha Soveny puts it: “What a good way for other businesses to take advantage of the attention-grabbing trikes!”

If you want your business to benefit from the

clever thinking people at Trike Man Billboards make sure you contact them on **9600 4522**.

And don’t forget they are still running tours all over Melbourne and its stunning surrounds. For more info on tours or to book, call **96706930**.

THIS WON’T STAY A SECRET FOR LONG

Carrie Fong grew up in her mother’s Chinese restaurant at Eastland so, for her, opening and running her own restaurant Meehub here in Docklands was a natural progression.

After working in her mother’s restaurant for years, Carrie had a break, but in February she got back into the hospitality industry, opening Meehub in Waterview Walk, Batman’s Hill.

All of that experience has helped Carrie understand how to run a successful restaurant. She found that her mother’s restaurant East Dynasty was far too big – on some nights catering for 200 people.

“It is much easier to focus on my customers here,” she said.

Meehub is a wonderful little eatery, which is unlikely to stay a secret much longer. The focus here is on its noodle dishes.

“Our research showed there wasn’t any

noodle restaurants, just plenty of sushi,” Carrie noted. “That’s why we named the restaurant Meehub Noodle & Sushi Café, and not the other way around.”

The name Meehub, thought of by Carrie’s brother also points to the spotlight on noodles. Mee means noodle in Chinese, while hub is a meeting place.

Carrie is also beginning to introduce rice dishes to the menu, in an attempt to lure more customers in at dinner time. “We are busy in the afternoon, but quieter at night. The rice dishes are for the night-time diners,” she said.

The ever-expanding menu at Meehub includes plenty of authentic Asian dishes, featuring seafood, beef and chicken. They cater for those wanting sushi as well, with fresh sushi hand rolls starting from \$2.30.

The large range of yummy noodle dishes start from \$8.50. So, no matter what time of the day, next time you have a craving for Asian food, make sure you stop in at Meehub.

For Carrie, offering great Asian cuisine at affordable prices has been on the cards ever since those years at her mother’s restaurant, but there’s no doubt where she’d rather be now, stating: “I prefer this one!”



COMPUTER CENTRE:

- Computer & laptops repair, service, sales
- Internet access & computer use / Wi-Fi
- Print / Copy / Fax / International calls
- Graphic & Website design / hosting / e-commerce

VISIT: 758 Bourke Street, Docklands
(next to Florist & Flight Centre)

CALL: 9008 7908

WEB: WWW.DOCKCOM.COM.AU
ONLINE COMPUTER STORE



FACES OF DOCKLANDS



LICHUAN MAO, 34
Owner of Red Charm

When she moved to Australia, Lichuan saw amazing potential in the Docklands area, and decided to invest here. She loves being so close to the harbour and, coupled with the fantastic architecture, Lichuan is constantly in awe of the wonderful views throughout the district.



MATT GORDIN, 25
Co-owner of Bike Force

Matt enjoys the convenience of Docklands, being so close to the city, while not being in the city. Not surprisingly, he also appreciates the various bike paths and the general accessibility on a pushbike Docklands offers. He also thinks we have the best sushi in Melbourne.



SARAH-JANE GARDINER, 21
Retail assistant at Laura Ashley

Sarah-Jane loves the friendly community at Docklands. She also enjoys the free activities that happen throughout school holiday times. Her favourite thing in the district however has to be the gravy roast sandwiches from le Cirque.



NICOLA ST JOHN, 23
Designer at Mediation Communications

Nicola has recently moved to Melbourne from Wollongong, and loves being down here. She says of Docklands that: "Being so close to the city, yet still having a lot of open space is so rare, it's great." She doesn't mind the water views from her office either.



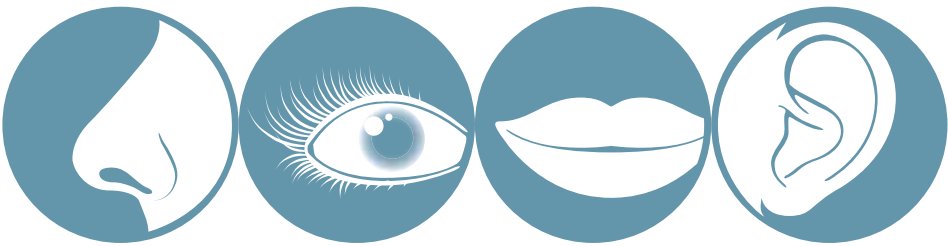
TIANA HOGBEN, 19
Sales assistant at Diadora

Tiana really enjoys working here in Docklands, especially during school holiday time. She says that the tourists who come down here are all so happy, as they are in holiday mode, and they bring with them so many exciting stories, which makes her work enjoyable.



LUKE DAVIS, 31
Retail manager at Fila

It is the open spaces within Docklands that Luke really admires. He also is complimentary of the open-air shopping centre at Harbour Town, and the variety of stores in the whole district. The other great aspect of the Docklands is that there is always something happening.



DOCKLANDS SECRETS

Local archaeology

The builders of the new NAB building between Etihad Stadium and the walking concourse uncovered some early colonial history last month.

Buried deep under more than a century's industrial residue was found a set of railway tracks – the wooden sleepers long rotted away. And immediately under the tracks was uncovered a hand-crafted brick drain.

Project builder Cbus was not interested in helping *Docklands News* get to the bottom of these mysteries.

But it has been hypothesised that the railway line led to the nearby Goods Shed (now known as North and South, but then the longest railway shed in the southern hemisphere).

Cbus is also diverting the walking concourse during the period of construction.

According to VicUrban, the concourse is being extended to the south to compensate

for width being lost on the north side.

VicUrban says Cbus is proposing to construct an additional permanent east/west enclosed colonnade which will improve pedestrian access within the Stadium precinct generally and relieve crowd flow pressures from gates 4 and 5 during event times.

Works affecting the north-south pedestrian bridge are targeted for completion in mid-2012.

The look of the new NAB headquarters at 700 Bourke St remains a secret.



Dockland's archeological mystery.



YMCA Docklands
Building a Stronger Docklands Community

With over 60 Group Fitness each week, we're sure to have something you will love!
www.docklands.ymca.org.au

YMCA Docklands on Collins
The ANZ Centre, 833 Collins St, Docklands
T: 8621 8300

YMCA Docklands Victoria Point
Level 4, 100 Harbour Esplanade, Docklands
T: 8615 9622
E: docklands@ymca.org.au



DOCKLANDS COMMUNITY CALENDAR



DOCKLANDS TOASTMASTERS Every 2nd & 4th Monday of the month <i>The Hub, 80 Harbour Esplanade</i> Boost your public speaking and leadership skills. Contact: email docklandstoastmasters@yahoo.com.au or visit www.docklands.freetoasthost.org	DOCKLANDS 2ND DECADE FOCUS GROUP May 9th and 10th <i>The Hub, 80 Harbour Esplanade</i> VicUrban and the Melbourne City Council are holding focus groups to develop a plan that will guide the next ten years of development in Docklands. To be involved please call Mollie Keating on 9285 9009 or email mollie_keating@capire.com.au	STUDY BY MONASH UNIVERSITY Exploring stories of coping with environmental change. Monash University researchers are looking for people willing to be interviewed on their experience of their local environment. Contact: Jana Paschen on 0413 623 615 or email jana.paschen@monash.edu	INDIAN CLASSICAL DANCING FOR CHILDREN 3+ (KATHAK DANCE) Tuesday and Thursday 4.00pm (classes will run 30- 45 minutes) <i>The Hub, 80 Harbour Esplanade</i> Currently seeking expressions of interest. Contact: Sonali on 0435 004 591 or email neharijhwani67@gmail.com Cost: \$20.00 pw includes both classes.
FINE LINE DRAWING AND BOTANICAL ART CLASSES. Monday and Thursday <i>The Hub, 80 Harbour Esplanade</i> The University of the 3rd Age offers two classes on Mondays and Thursdays. To make an enquiry regarding the classes, please ring U3A on 9639 5209	DOCKLANDS ROTARY Every Tuesday, 6.00pm <i>Waterfront Venues, Waterfront City</i> First Tuesday of the month is fellowship hour. Regular meetings on other Tuesdays. All welcome.	THE BIG FAIR-TRADE MORNING BREAK Friday, May 13, 7 - 11 am <i>Harbour Esplanade, NAB Forecourt</i> Come along for a coffee or tea, enjoy band performances and support Fair Trade Fortnight. For more information visit: moralfairground.com.au	CHASE THE CACHE Sunday, May 22 <i>Harbour Town</i> Chase the Cache may be the coolest treasure hunt since Captain Jack Sparrow was around. This hi-tech charity event was created by Big Brothers Big Sisters. Visit www.chasethecache.com.au
LOCAL COCKTAIL DINNER AND TARGET 3008 CELEBRATION May 26, 6.30pm – 8.30pm <i>Shop 7 Merchant Street, Docklands</i> The discussion over the garden’s future will be held over canapés and cocktails. Tickets: \$40 each. Please contact Ceren email catchyevents1@hotmail.com	DOCKLANDS BRAZILIAN JIU-JITSU <i>The Hub, 80 Harbour Esplanade</i> BJJ is a style popularised by media such as the UFC and is proven as an extremely effective form of martial arts. Phone 9016 8471 , email info@docklandsbjj.com.au or visit www.docklandsbjj.com.au	DINE FOR A CURE Friday, May 27, 7pm <i>Shed 14, Central Pier</i> Hosted by Libby Gor and featuring Wilbur Wilde and Joe Camilli, this spectacular evening is in support of funding research into brain cancer. For more information email info@dineforacure.org	DRAGON MASTERS BOATING Wednesdays at 5.30pm & Saturdays at 8.30am <i>Shed 2 North Wharf Road Victoria Harbour (Melways map 2E B6)</i> Dragon Masters has something for anyone. Please contact Jeff Saunders 0417 219 888 email Jeff.saunders@digisurf.com.au or visit www.dragonmasters.com.au
BELLACIZE BOOTY HIPS (CULTURAL DANCE 4 FITNESS) Fridays, 5.30pm - 6.30pm Zumba, 6.30pm - 7.30pm Bellacize booty hips <i>The Hub, 80 Harbour Esplanade</i> Contact: Christine@bellacize.com	LEARN TO SAIL Every Sunday, by appointment <i>Docklands Yacht Club, Shed No. 2 North Wharf Rd</i> Docklands Yacht Club is an accredited Yachting Australia Training Centre and offers Get Into Small Boat Sailing courses. Contact Ray Allen 0429 868 304	HUB CLUBS Monday, Wednesday and Friday <i>The Hub, 80 Harbour Esplanade</i> Cost: No charge. Table tennis continues to grow in popularity and The Hub is also open to other suggestions. BYO lunch. For details 8622 4822 or docklandshub@melbourne.vic.gov.au	JUST LEADERSHIP JUST IMAGINE BREAKFAST SERIES May 12, 7.15 - 8.55am <i>NAB Auditorium 800 Bourke St</i> Cost: \$15 per person Just Leadership aims to develop a community of people from organisations across Docklands and beyond. Email justleadership@jss.org.au
YOGA IN THE DOCKLANDS <i>The Hub, 80 Harbour Esplanade</i> Cost: \$20 per class or \$165 for a ten-class pass. Hatha Yoga suitable for all ages and levels of experience. Ph Nadine 0404 025 041 or visit nadinefawell.net	HEAL YOUR LIFE Saturday, May 28 <i>The Hub, 80 Harbour Esplanade</i> Cost: \$220.00 A powerful, life changing workshop based on the philosophy of Louise Hay. Contact Susan Batchelor phone 0408 770 175 or email sebatchelor@hotmail.com	PILATES FOR MUMS Wednesday 7.30-8.30pm <i>The Hub, 80 Harbour Esplanade</i> \$15 casual class, discount for mutiple. Specially designed Pilates classes for all ages and stages. Call 0432 252 278 or email jane@pilatesformums.com.au	CITY ON A HILL Church Services Sunday 10am <i>Hoyts, Melbourne Central</i> Sunday evening 6pm <i>Arrow on Swanston (488 SwanstonSt)</i> Contact cityonahill.com.au
COMMUNITY PLANTING DAY Sunday May 15, 12.30 until 3.30pm <i>Westgate Park</i> Come and help the Friends of Watergate Park to restore our recently replenished wetlands. For more information contact Naomi Sunner on 0415 942 629 or gnomie@labyrinth.net.au	ALMA DOEPEL SUPORTERS MONTHLY SAUSAGE SIZZLE Third Saturday of every month 5pm - 7pm <i>Alma Doepel Restoration Site Shed 2, North Wharf Road, Victoria Harbour, Docklands.</i> Learn about our restoration project and see if you would like to get involved.	DOCKLANDS SUNDAY MARKET Every Sunday, 10am to 4pm <i>Waterfront City Docklands Drive</i> Discover treasures from the hoards of some of Melbourne’s finest antique and pre-loved specialists, including art, jewellery, retro-clothing, vintage books and car-boot sales.	SCRAPBOOKING@DOCKLANDS <i>The Hub, 80 Harbour Esplanade</i> Traditional, Digital and Hybrid Scrappers join us for a weekly fun night at The Hub. Classes and workshops are accepting bookings now. Expressions of interest for lunch hour classes also being accepted. Call 0403 200 106 or email subscribersall@gmail.com
THE RELIGIOUS SOCIETY OF FRIENDS (QUAKERS) Every Sunday 11am-12pm <i>The Hub, 80 Harbour Esplanade, Docklands</i> Meet for worship and enjoy a tea or coffee afterwards. Ph: 9827 3595 or visit www.victoria.quakers.org.au	FREE ADULT HEARING CHECKS Every 2nd Thursday of the month 2pm - 4pm. <i>The Hub, 80 Harbour Esplanade</i> Service provided free of charge by Vicdeaf. Bookings essential, contact Tanya on 86224822 or email tanya.graham@melbourne.vic.gov.au	MELBOURNE LIBRARY SERVICE PRESCHOOL STORYTIME Mondays at 11am <i>The Hub, 80 Harbour Esplanade</i> Pre-school Storytime has returned to the Hub. Come along to meet other local parents and kids. Enjoy some books, songs, and a craft activity.	MINI MAESTROS Tuesdays and Thursdays <i>The Hub, 80 Harbour Esplanade</i> Introduce your child to the magic of music with Mini Maestros. Music programs for babies and children aged 6 months to 5 years. Contact Karen Dunlop on 9503 0056 or visit minimaestros.com.au

BUSINESS DIRECTORY

If you are not on this list then email
advertising@dockandsnews.com.au or phone 8689 7979
to discuss how you can get on this list for FREE!!

ACCOUNTING & FINANCIAL SERVICES

TAX AID
The Docklands Income Tax Specialists

THE PROFESSIONALS WHO CARE AND THINK FOR YOU

744 Bourke St, Docklands, 3008
tel: 9600 1100
fax: 9600 1150
email: tony@taxaid.com.au

ARCHITECTS

Metroworks Architects
Suite 405B, 198 Harbour Esplanade
9670 9771
www.metroworks.com.au

BOATING

Blair Shipwrights
PO Box 803, Port Melbourne
0422 209 756

Pleasure Cruising & Boats 4 Hire
G19 427 Docklands Drive, Docklands, 3008.
1300 132 565
www.pleasurecruising.com.au

CAR WASHING

shine
hand car wash

- ETIHAD STADIUM (CAR PARK A)
740 BOURKE STREET - DOCKLANDS
T: (03) 9602 4988
W: WWW.SHINECARWASH.COM.AU
- EXPRESS WASH - FROM \$19.90
- OPEN 7 DAYS A WEEK
- 30 MINUTES PARKING INCLUDED

CELEBRANT

Affordable Ceremony
Mr. Jan Gielnik cmc
Commonwealth Authorized: Reg: A9441

Tel: (03) 9379 0825 | Mob: 0417 011 086
jan@bigpond.net.au | www.affordableceremony.com.au

"It is an Honour & Privilege to be your Celebrant"

CHILDCARE

susan rogan
FAMILY CARE

Professional nannies • Approved In Home Care provider

+613 9670 7686 www.susanrogan.com.au

Little Assets
#1 in Early Childhood Education

Quality environments and stimulating learning opportunities for children aged from 3 months - 6 years

ALL ABOARD
The educational journey starts here

Avondale Heights - 9317 0688
Cairnlea - 8361 9388
Melbourne City - 9620 2887
Melton - 9746 9710

www.littleassets.com.au

Gowrie
VICTORIA

Excellence in Early Childhood Education

1 Seafarer Lane Victoria Harbour Docklands
P: 8624 1000 | www.gowrievictoria.org.au

Quality early childhood education and care on your doorstep at Docklands

- > Long Day Care
- > Kindegarten Programs
- > Children's Bookshop
- > Maternal & Child Health Service
- > Playgroups
- > Open 8am to 6pm Mon - Fri

CHURCHES

City on a Hill
9/71 Merchant Street
9614 8998
www.cityonahill.com.au

CLEANING SERVICES

Le Roux Cleaning Services
Domestic and Commercial Cleaning
0413 563 572
www.lerouxclean.com.au

Domestic Cleaning Excellence
20 years experience
0413 225 497

COMPUTERS

DOCKCOM
DOCKLANDS COMPUTER SPECIALIST

WWW.DOCKCOM.COM.AU
PH. (03) 9008 7908

COMPUTING/IT SERVICES

Vaquita
902/90 Lorimer Street, Yarra's Edge
0416 866 038
www.vaquita.com.au

CONSULTANT

MarshNeale Business Consulting
902/90 Lorimer Street, Yarra's Edge
0416 866 038
www.marshneale.com

DENTAL

NEWQUAY DENTAL COSMETICS
General & Cosmetic Dentistry

Dr Joseph Moussa a member of the Australian Dental Association provides:

- Teeth Whitening • General & Cosmetic Dentistry
- Dental Implants • Inlays, Onlays, Crowns & more

We are equipped with the latest technology available in dentistry today.

For an appointment please call: 9602 5587
Emergency: 0412 777 612
Web: www.nqdentalscosmetics.com.au

FITNESS & HEALTH / RECREATION

SeaKayak Australia
8415 0997
0410 329 090
www.seakayakaustralia.com

GENERAL SERVICES

DOCKLANDER DEALS

Get an awesome Docklander Deals card now!

The card that gives.
docklanderdeals.com

GRAPHIC DESIGN

Mediation Communications
005/198 Harbour Esplanade
9602 2992
www.mediacomms.com.au

HOLIDAY ACCOMMODATION

Promacom

Get away to Wilson's Promontory

Book your escape

Tel (03) 5682 1436
Mob 0429 822 290
www.promacom.com.au
info@promacom.com.au

INVESTMENT SERVICES

Business Investment Australia
www.mauritrade.net - info@mauritrade.net

MARKETING

Happy customers. More sales.

SIMPLE CUSTOMER MANAGEMENT

1300 780 276

www.simplecustomermanagement.com.au

MEDICAL

VICTORIA HARBOUR MEDICAL CENTRE

Hours: Mon to Fri 8am-6pm & Sat 9am-12noon

800 Bourke Street, Docklands (below NAB)
Ph: 9670 7040

- 6 experienced GPs
- Physiotherapist
- Chiropractor
- Podiatrist & Massage Therapist
- Men's and Women's Health
- Immunisation / Vaccinations and Travel Medicine

THE TRAVEL DOCTOR TM+VC
TRAVELLER'S MEDICAL & VACCINATION CENTRE

Now open

Travel Doctor Plus+
Your Healthy Lifestyle Clinic

Level 4, 700 Collins Street, Docklands

Open Monday to Friday 8.30am - 5.00pm
8622 6333 | docklands@traveldoctor.com.au

OPTOMETRY

SOLOTICA the worlds most natural looking coloured contact lenses for dark or light eyes!
www.twitter.com/Solotica

PETS

25 Victoria Ave, Albert Park 3206
Ph 9886 5252 • www.petsandthecity.com.au

- Waterproof footy coats in store now
- New coats and skivvys arriving weekly
- Great rage of cosy faux fur beds

OPEN 7 days

pets & the city

PHARMACY

southern cross pharmacy

Hours: Monday to Friday 7am-8pm
Saturday 10am-6pm
Southern Cross Station
Shop C8, 99 Spencer St, Docklands
Ph: 03 9600 0294 Fax: 03 9600 0594
Email: southerncrosspharmacy@nunet.com.au

victoria harbour pharmacy+news

Hours: Mon to Fri 8am-8pm & Sat 9am-1pm
Pharmacy • Giftware
Magazines & Papers • Tatslotto
Same day dry cleaning

66 Merchant St, Docklands (opposite Safeway)
Ph: 03 9629 9922 Fax: 03 9629 9933
Email: vicharbourpharmacy@nunet.com.au

PHYSIOTHERAPY

WELLBEING & FITNESS A PRIORITY?

Phone 03 9602 4008
www.newenergyphysio.com.au

new energy
physiotherapy

pinnacle healthgroup

physio pilates massage

ph. 9600 3590 pinnaclehealthgroup.com.au
L4, 100 Harbour Esplanade, Docklands 3008

NEWQUAY DENTAL COSMETICS
General & Cosmetic Dentistry

Your Smile is Your Logo

Dr. Joseph Moussa is a member of the Australian Dental Association, the International Team for Implantology and the Ossio integration Society. Having over twenty years of experience in general dentistry, with a special interest in cosmetic dentistry.

We are equipped with the latest technology available in dentistry today. NewQuay Dental Cosmetics provides unhurried personal dental treatments. We offer chair-side whitening, ceramic veneers, dental implants and more.

To make an appointment call
Tel: (03) 9602 5587
Emergency: 0412 777 612
www.nqdentalscosmetics.com.au

BUSINESS DIRECTORY

PODIATRY

Victoria Harbour Podiatry
 Located @ Victoria Harbour Medical Centre
 800 Bourke Street, Docklands

- General Footcare & Maintenance
- Sports Injuries/Rehabilitation
- Biomechanical Assessments
- Orthotic Therapy
- Nail Surgery
- Infants/Children

Phone 9670 7040

REAL ESTATE

BarryPlant
 The red carpet experience

9936 9999
 818 Bourke Street, Docklands
 docklands@barryplant.com.au

barryplant.com.au

Century 21

Waterview Docklands
 831a Bourke Street,
 Docklands VIC 3008
 Tel: (03) 9620 5888
 Fax: (03) 9614 8577
 Mob: 0423 231 374
 Website: www.century21.com.au/waterviewdocklands
 Email: aliabbasc21@century21.com.au

Ali Abbas
 Director

CityResidential
 REAL ESTATE

Glenn Donnelly
 MANAGING DIRECTOR
 E glenn@cityresidential.com.au
 M 0419 998 235

Shop 5, 60 Siddeley Street, Docklands
 Phone 8614 8999 www.cityresidential.com.au

jcostreet

Ph: 9600 4988

Suite 10, 198 Harbour Esplanade
 Docklands Vic 3008
 info@jcostreetrealestate.com.au
 jcostreetrealestate.com.au

Docklands Real Estate Agents
 Located in the heart of Docklands,
 Lucas Real Estate offers over 9 years of Docklands Sales and Leasing expertise.

62 River Esplanade, Docklands VIC 3008 9645 1199 www.lucasre.com.au

RESTAURANTS, CAFÉS & BARS

Bhoj Indian Restuarant
 54 NewQuay Promenade
 9600 0884 - www.bhoj.com.au

Bob's Steak & Chop House
 ~ The first traditional and upscale steakhouse of such style and class to come to Docklands ~

Established 1993

OPEN 7 DAYS FOR LUNCH AND DINNER

FOR RESERVATIONS: CALL: 9642 3350
 MAIL: info@bobs-steakandchop.com.au

GROUND FLOOR, NATIONAL FOODS CENTRE
 737 BOURKE STREET, DOCKLANDS
 (OPPOSITE ETIHAD STADIUM)

DOCKED

TAPAS BAR

Outside gate 9 behind the giant wine glass:
 concourse ETIHAD STADIUM
 BOOKINGS: 9642 1882
 www.docked.com.au

Lamere Docklands Italian Family Restaurant

768 Bourke St. Docklands, VIC 3008
 Tel 03 9600 2377 Fax 03 9600 4388
 www.lamoredocklands.com.au

OPEN: Mon - Fri 12:00 - 10:00pm,
 Sat 4:00 - Late | Sun 9:00 - 1:00 & 4:00 - Late

MEEHUB
 noodle & sushi cafe

Shop 10, 4 Waterview walk,
 Docklands 3008
 Tel: 03 9670 6886

TELECOMMUNICATIONS

OPTICOM
 Fibre Optic & Communications Services PTY LTD
 YOUR COMPLETE NETWORK SOLUTIONS

NETWORK CABLING
 PROJECT MANAGEMENT
 http://opticom.webs.com

P.O. BOX 5085
 CHELTENHAM EAST
 P/ (03) 8521 3420
 EMAIL: opticom@live.com.au

VETERINARY

FLEMINGTON VETERINARY HOSPITAL
 FULL VETERINARY SERVICES

Dr Anne Dynon
 Dr Uttara Kennedy
 Ph: 9376 5299
 187 Mt Alexander Rd
 (Cnr Kent St) Ascot Vale

- Dental
- Grooming
- Hydrobath
- Endoscopy
- Boarding
- Kitty Kinder
- House Calls
- Weight Loss Clinic
- Ultrasound
- Puppy Pre School

Web: www.flemingtonvet.com.au

Port Melbourne Veterinary Clinic

Friendly professional pet healthcare
 • Hydrobath • Pet food
 • Pet care products also available
 Open 7 days a week
 Mon - Fri 8am to 7pm
 Sat - Sun 9am to 5pm

For advice and appointments Ph: 9646 5300
 Web: www.portmelbournevet.com.au
 109 Bay Street, Port Melbourne

VIDEO PRODUCTION

Internet
 Video House Tours

SELL YOUR HOUSE

VideoCowboys.Com
 0414 188 050
 Studio 9, 198 Harbour Esp. Docklands.

WEB DESIGN

mediationcommunications

Web specialists

108/198 HARBOUR ESPLANADE DOCKLANDS 3008
 P +61 3 9602 2992 / F +61 3 9602 2929
 WWW.MEDIACOMMS.COM.AU

DOCKLANDS NEWS
 CONNECTING BUSINESSES
 WITH DOCKLANDS



Looking for something?

Docklands Directory.com.au

What to do

Where to stay

Where to Eat /Drink

Beauty, Health & Fitness

Docklands Services

Where to Shop

DOCKLANDS SPORTS PAGE

Australia wins divisional victory

Australia won the 2011 World Championship Division II title after a thrilling victory over Serbia last month at the Medibank Icehouse in Docklands.

The Australian Men's Ice Hockey team (the Mighty Roos) secured a 4-2 victory over the higher-ranked Serbian side on April 10, becoming 2011 IIHF World Championship Division II champions and gaining promotion to Division I in 2012.

The Serbian team scored the first goal of the match – leaving Australian fans feeling that the Mighty Roos' fairytale run of success may be drawing to a close.

That was until Australian captain, Greg Oddy, scored the team's opening goal in the first period, equalising with Serbia at the eight-minute mark.

Mighty Roos players David Upton, Joseph Hughes and Liam Webster followed suit, each with a goal to their name in the hard-fought victory over Serbia.

The Mighty Roos moved through the week-long round-robin tournament undefeated with impressive wins over Mexico (11-1), Belgium (5-3) and New Zealand (2-0).

The energy and excitement of the tournament has left a strong impact on Melburnians who have fallen for the fast-paced action, skills and intensity of elite Ice Hockey.

The Icehouse hosted all 10 matches with sold out crowds at every Australian game. It also



opened its second rink for hundreds of fans to watch the final live on the big screen.

The World Championship is the 'ice' on the cake for the Medibank Icehouse. In its first year of operation the centre has bought success back to Australian ice sports:

- Australia claimed the 2011 World Division II Ice Hockey Championship title
- Melbourne Ice Men's team won the 2010 National League Championship for the first time

- Melbourne Ice Women's team won the 2010 National League Championships for the first time

- All other Victorian teams from Junior to Seniors won or were runner up in their Divisions in 2010, making Victoria the most successful state in 100 years of Ice Hockey

- 17 National Speed Skating records were broken at National Titles in 2010

- Novice Men's National Figure Skating

Champion, Alex Dillon, won the crown at National Championships in 2010

- Victorian Curler, Vaughan Rosier, has been selected for the Australian National team

Final results of the 2011 IIHF World Championship and game summaries have been posted on the International Ice Hockey Federation website www.iihf.com.



Comment on this story online:
www.docklandsnews.com.au

STRONG RENTAL DEMAND!

27 Docklands apartments leased in April 2011.

We live and breathe Docklands.



For the highest level of service and results that deliver, contact Sonya Dyson from Lucas Real Estate on 0406 500 798 to have your property leased and managed by the experts in the Docklands.

lucas | real estate

Yarra's Edge
t 03 9645 1199
62 River Esplanade, Docklands 3008

NewQuay
t 03 9091 1400
1/401 Docklands Drive, Docklands 3008

www.lucasre.com.au