

NOVEMBER 2025 EDITION #224

FOREVER FREE

## The Boat Show ... how bloody good



The 63rd Melbourne Boat Show has been hailed another resounding success after it concluded on Sunday, October 19 at Docklands, with close to 39,000 people in attendance celebrating all things boats and boating lifestyle. More on page 15.

Photo: Hanna Komissarova.

## Council backs landmark Docklands build-to-rent tower – but warns “the great Australian dream in Melbourne is dead”

“

The City of Melbourne has thrown its support behind a major build-to-rent (BTR) tower at the gateway to Docklands, endorsing plans for the prominent corner of Harbour Esplanade and La Trobe St to the state government with a suite of conditions.

”

WORDS BY  
SEAN CAR



Councillors backed the plans at the October 7 Future Melbourne Committee (FMC) meeting, praising the overall quality of the Fender Katsalidis-designed scheme and its potential to add hundreds of new rental homes while tightening crucial design requirements around overshadowing, wind, and ground-floor activation. The plans

now go before State Planning Minister Sonya Kilkenny for final approval.

The development by Salta Properties proposes around 560 BTR apartments across a 32-storey tower rising from a seven-level podium at a long-vacant site described by Fender Katsalidis architect Nicky Drobis as a “missing tooth” of Docklands.

Council officers have sought changes to reduce shadow impacts along Harbour Esplanade, requiring further wind modelling and mitigation to improve the public realm, and to secure a more active building edge at street level so the ground plane contributes to life on the waterfront, not just residents inside the building.

The scheme also includes an affordable housing contribution of 4.6 per cent, and a landscaped forecourt that must be reconciled with Melbourne Water’s flood-resilience requirements.

Endorsing the motion, the council’s planning chair and Deputy Lord Mayor Roshena Campbell said the corner site was “a landmark location” at the water’s edge and that the council’s conditions were aimed squarely at city-making essentials – sunlight, wind comfort, and active edges – so the building “works for everyone who uses Harbour Esplanade, not only future residents.”

Continued on page 5.

STRATA, PAGE 03

VCAT ruling  
limits OCs' ability  
to manage their  
buildings

TRANSPORT, PAGE 09

Wurundjeri Way  
Extension opens  
to drivers for the  
first time



FEATURE, PAGE 11

Anne Jolic: Guiding  
Docklands from  
development to  
discovery

Development Victoria’s newly  
appointed CEO, Anne Jolic,  
has lived Docklands' story  
from the inside and says her  
focus is now on the precinct's  
“maturity phase”.

THE DISTRICT  
DOCKLANDS

**WEEKDAY SPECIALS**  
OVER 30 FOOD & DINING OPTIONS



CHICKEN BURGER MEAL \$9.90  
WEEKDAYS 2PM - 4PM

**90 MINUTES  
FREE PARKING**





HYPERLOCAL

NEWS

CONTACT

Suite 208, 198 Harbour Esplanade  
Docklands 3008  
docklandsnews.com.au  
Tel: 8689 7980

EDITOR

Sean Car

PUBLISHER

Hyperlocal News Pty Ltd  
ABN: 57 623 558 725

ADVERTISING

Hyperlocal print works for  
advertisers in our digital world  
because local people are  
interested in local news.

To sell to the Docklands community,  
contact Sean Car on 0460 896 115 or  
sean@hyperlocalnews.com.au

Reader contributions are welcome.  
Send letters, articles and images to:  
admin@hyperlocalnews.com.au

The deadline for the December /  
January edition is November 28

Opinions expressed by  
contributors are not necessarily  
shared by the publisher.

hyperlocalnews.com.au  
admin@hyperlocalnews.com.au

Follow us on social media  
by searching @docklandsnews

# EOIs open for Marvel Stadium waterfront sites

The Victorian Government has opened Expressions of Interest (EOIs) for the redevelopment of the two prime waterfront sites flanking Marvel Stadium, paving the way for what’s being billed as the next major chapter for Docklands.

WORDS BY  
SEAN CAR



Announced on October 13 by Minister for Development Victoria and Precincts Harriet Shing, the call-out marks the formal start of a search for development partners to deliver the transformation of 140 and 160 Harbour Esplanade – currently home to AFL House and the former Channel 7 broadcast centre.

Under a Joint Venture Agreement between Development Victoria (DV) and the AFL, the state government hopes the sites will become a vibrant mix of housing, offices, hospitality and entertainment venues, extending the life and activity of the precinct beyond game days.

“The transformation isn’t just about buildings – it’s about creating new public spaces, local opportunities and a lively waterfront precinct where residents, workers and visitors can connect,” Minister Shing said. “This is an exciting step in delivering a new chapter for Docklands.”

The project builds on the \$225 million Marvel Stadium upgrade, completed in 2024, and aims to further entrench the venue as one of Australia’s leading destinations for sport and live entertainment.

According to the government, the redevelopment will support “thousands of jobs” and contribute to Docklands’ reputation

as one of Melbourne’s most significant renewal success stories, with nearly \$15 billion in private investment already attracted to the area.

The EOI process, open until 5pm Friday, December 5, 2025, will shortlist developers to participate in a Request for Proposal (RFP) stage, with a focus on “high-quality urban design and community outcomes” before detailed designs progress to planning approvals.

While the government and AFL the are promoting the project as a major opportunity for the city’s waterfront, it comes amid lingering community debate over the scale and design of future towers proposed for the same sites.

As reported by Docklands News in August 2024, the Minister for Planning approved planning scheme amendments allowing for towers of up to 129 metres on the sites, exceeding previous height limits of 60 to 75 metres. That decision drew criticism from the City of Melbourne, which argued that the development lacked adequate public benefit and that the master plan failed to address the long-term vision for Harbour Esplanade.

At the time, councillors including planning chair Cr Rohan Leppert and Lord Mayor Nick Reece expressed disappointment that their recommendations for a more balanced design response had been overlooked, while Cr Jamal Hakim described the proposal as “out of step with community expectations”.

In response, Minister for Planning Sonya Kilkenny said the redevelopment would “reinvigorate the area”, describing Docklands as a “fabulous precinct” with “enormous potential to enhance retail, housing and entertainment opportunities.”

A year later, with EOIs now open, the government’s tone has shifted from approval to activation. Development Victoria says the process will help identify “innovative proposals” that can deliver both commercial outcomes and broader community benefit, including improved public access to the waterfront.

The AFL’s executive general manager of finance, clubs and infrastructure, Matt Chun, said the redevelopment would “continue to amplify Marvel Stadium and the surrounding areas as Melbourne’s destination sports and entertainment complex.”

“We look forward to continuing next steps in the development,” Mr Chun said.

EOI details are available at [buyingfor.vic.gov.au](http://buyingfor.vic.gov.au) ●

FOR SALE

1501/35 Albert Rd – Melbourne

FOR SALE

4101/327 La Trobe St – Melbourne

Are you thinking  
of selling this spring?

Call us now  
03 9804 5551

ire.com.au

SALES | RENTALS | OWNERS CORPORATION

Please support our advertisers because without them we would have no Docklands News



# VCAT ruling limits OCs' ability to manage their buildings

“

A recent tribunal ruling has sparked widespread concern among apartment owners, after it effectively stripped owners' corporations (OCs) of their ability to take disputes to the Victorian Civil and Administrative Tribunal (VCAT) without first securing a supermajority.

”

WORDS BY  
JON FLEETWOOD



The legal precedent, set by VCAT deputy president Teresa Bisucci, means OCs must now achieve a 75 per cent vote from all lot owners for non-monetary actions, including compelling a neighbour to stop nuisance activities or behaviour, or demanding documents.

Owners' Corporation Network (OCN) director and Docklands resident Dr Janette Corcoran said the ruling had “significantly limited” the ability of OCs to manage their buildings and maintain liveability.

“It creates uncertainty for both residents and committees and undermines confidence in the management of shared living environments,” Dr Corcoran said. “This highlights the urgent need for clearer and more



consistent oversight of strata governance.”

OCN is advocating for a Strata Commissioner for Victoria – a role that already exists in New South Wales and Queensland – to provide independent oversight and prevent such unintended consequences.

Dr Corcoran said the decision did not favour residents, arguing it weakened the

ability of communities to uphold agreed standards.

“It’s hard to see how residents benefit when rules that everyone accepted before moving in can no longer be enforced,” she said. “This arguably favours those who wish to breach rules, often at the expense of their neighbours’ amenity.”

“Most residents reasonably expect quiet

enjoyment of their homes – this decision weakens that shared expectation.”

Strata industry campaigner Rocco Sorace said the ruling had already caused serious confusion and distress for apartment communities trying to manage short-term letting.

“Our building went through the lengthy and expensive process of achieving a 75 per cent vote to ban Airbnb and similar short-term rentals,” Mr Sorace said. “Now we’re being told we need another 75 per cent vote just to enforce the same rule through VCAT. It’s unjust and unworkable.”

Mr Sorace said his building had spent more than \$100,000 in legal fees and four years of effort to reach the original agreement.

“Residents deserve the right to protect their homes, privacy and safety without facing endless procedural hurdles,” he said. “We’re asking the government to clarify the law so that one special resolution is enough to both implement and enforce a ban.”

A Victorian Government spokesperson said reforms introduced in 2021 were designed to modernise strata governance, and that an independent review was already under way.

“We made significant reforms in 2021 to better reflect the needs of Victorians living in apartments and other properties administered by owners’ corporations,” the spokesperson said.

“We’ve commissioned an independent expert panel to review the Owners Corporation Act to ensure the legislation is fair, efficient and in the interests of lot owners and residents.”

The panel, chaired by former minister Marsha Thomson alongside Karen Chester and David McKenzie, is consulting with strata communities across Victoria and will deliver its recommendations to the Minister for Consumer Affairs by December 2025. ●

## Must-Try Dining at Collins Square!

Looking for Melbourne’s ultimate foodie destination? Collins Square has over 30 eateries to satisfy every craving.

Start with coffee at **Longshot**, grab a pastry from **Pure Pie**, and recharge with **Boost Juice**.

Lunch? Choose from Japanese, Italian, Indian, or classic Aussie favourites.

End the day with cocktails at **Hightail**, and dinner at **Chiara Wine Bar**.

Discover more at  
[collinssquare.com.au](http://collinssquare.com.au)

COLLINS SQUARE





LETTERS

No “ghost footprint”

The harbour looks so much better now that Central Pier has been demolished. It has really opened the vista. Marking the footprint of the demolished pier with buoys and lights is totally unnecessary.

The open water we now enjoy would be ruined with clutter. The money would be better spent making Harbour Esplanade a beautiful boulevard.

The east side of the Harbour Esplanade will hopefully one day be activated by shops, bars and restaurants but work on the west side, the public side, could commence right away.

There could, for example, be an undulating board walk along the water line with random cutouts for water features. Maybe even steps down into the water. There could be gardens with grass, trees and flowers between the boardwalk and the roadway.

It needs a grand vision, but Melbourne is renowned for its parks and gardens. It could be done.

A row of lights cluttering the harbour would be invisible during the day and could only be appreciated by someone in an aircraft at night. They might even mistake it for a landing strip.

Harbour Esplanade, even in its present dilapidated form, is used quite a lot by pedestrians now. Imagine how much nicer it would be to walk along meandering paths lined with trees and flowers.

Cliff Steele ●



Docklands Farmers Market pauses for November amid plans for new foreshore location

The Docklands Farmers Market will not go ahead in November, after low foot traffic at its current Marvel Stadium site prompted organisers to find a new home.

WORDS BY  
JON FLEETWOOD



Market manager Tim Walsh confirmed that while the event wasn't closing, it would take a short break as plans progress for a new location closer to the Docklands waterfront.

"We'd always planned to hold three markets at Marvel for spring – September, October and November – but after seeing how quiet it was, we decided to pause for the month," Mr Walsh said.

The market, which launched at NewQuay before relocating to Marvel Stadium, is now targeting a move to a new site near the Yanonung Quay ferry terminal. Mr Walsh said he was optimistic this could become its new permanent home.

"It's a great visible location, equally accessible from both sides of the harbour. Once we get the market embedded in the community and build up foot traffic, it'll really take off," he said.

While he remains cautious about confirming the December date before permits are finalised, Mr Walsh said the team was "still keen" to make the market a long-term fixture in Docklands.

"It's not your classic demographic for a farmers market – there are more apartments than big families – but it's a great location and I'm confident we can get it to work," he said. "We just need to fine-tune it a little and find the right balance." ●



A new way of managing owners corporations

Integrity | Respect | Energy

Call us now 03 9804 5551 | [iocm.com.au](http://iocm.com.au)

Property experts. **Inside and out.**

SALES | RENTALS | OWNERS CORPORATION

Est. 2019



# Council backs landmark Docklands build-to-rent tower – but warns “the great Australian dream in Melbourne is dead”

Continued from page 1.

She added that while the council was “acutely aware of the need to deliver more housing,” protecting public amenity in Docklands remained non-negotiable.

Lord Mayor Nick Reece said the proposal was “an elegant new building ... a proud addition to the skyline” in what he described as Melbourne’s postcard view looking back to the Hoddle Grid. Cr Reece underlined the importance of activation, too.

“With some of the build-to-rent applications before us, we’ve seen buildings that really look in on themselves,” he said, stressing that Melbourne “likes busy streets with lots of people, and permeable buildings where people are coming and going.”

The council’s debate also laid bare a bigger trend: Docklands is fast becoming Melbourne’s BTR capital. The precinct has seen a wave of large BTR schemes in recent years, with councillors noting that the pipeline of traditional “build-to-sell” apartment projects had slowed to a “trickle”.

In unusually blunt closing remarks, Cr Campbell said, “the great Australian dream in Melbourne is dead,” pointing to the scarcity of for-sale proposals coming before the council and urging system-wide work – through the inner-city M9 councils – to revive build-to-sell supply alongside BTR and student housing.

On the specifics of the 699 La Trobe St site, the proponent’s team told councillors the design intentionally avoids a continuous “wall” of built form along Harbour Esplanade. The tower mass is split into two interlocking volumes with varied setbacks to break down scale, while a shoulder-height



podium is to be screened with apartments to keep the street active.

Entries are planned on all frontages, and all loading and back-of-house functions are consolidated to the rear lane to keep the corners as public as possible. The council’s wind and overshadowing conditions will require additional design refinements

before any approval is finalised.

Salta, which has recently opened its “Est.” BTR brand in Fitzroy North and has begun a large Richmond project, welcomed the endorsement.

“We welcome the council’s support for 699 La Trobe and will continue to work with authorities to finalise approvals and deliver

much-needed rental homes in Docklands,” a spokesperson said, adding that the company intended to push quickly into design documentation so the project could proceed next year, subject to ministerial consent.

Councillors queried the Salta team about event-day operations around Marvel Stadium, the nearby tram super-stop on La Trobe St and construction logistics on a corner that carries heavy pedestrian flows.

The developer said it would prepare a detailed construction management plan for City of Melbourne approval and that it had held “positive dialogue” with the AFL about Marvel Stadium interfaces and access during and after construction.

The council also pressed for assurances on the scheme’s street-level life. The applicant said it was exploring a publicly accessible café or similar offer on the corner while committing to visible and welcoming resident spaces that contribute to passive surveillance and day-to-day activity on both La Trobe St and Harbour Esplanade. The council’s condition calls for “further design measures or a ground-floor retail tenancy” to address the lack of active edge fronting the waterfront.

On the same night, councillors supported another major student residential project in Carlton, prompting the Lord Mayor to hail more than \$300 million in new investment going through the chamber.

But his broader message echoed the Deputy Lord Mayor’s: while BTR and student accommodation are helping Melbourne meet urgent housing demand, the city also needs a stronger pipeline of for-sale apartments – including larger, family-sized homes – if it wants to restore a path to ownership for more Melburnians. ●

## WEST GATE TUNNEL

# DISCOVERY DAY 16 NOV

In partnership with:

Transurban

VICTORIA'S  
BIG BUILD

VICTORIA  
State Government

## 8km run 2.5km walk

Free family fun at Yarraville Gardens with entertainment, food and info stalls.

## Explore the West Gate Tunnel before it opens!

We’re getting ready to open the West Gate Tunnel. You can walk or run through parts of the tunnel, or come along to enjoy the free family friendly festivities at Yarraville Gardens. Register for the once-in-a-generation opportunity to explore the new road before it opens.



Scan to register now  
[westgatetunnelproject.vic.gov.au/discoveryday](https://westgatetunnelproject.vic.gov.au/discoveryday)





## PURR-FECTLY SAFE: NEW RULES KEEPS CATS AND WILDLIFE SAFE

*Finn is a healthy and happy indoor cat... and an expert in casual rejection and being judgemental*

**If your cat loves to stalk socks or pounce on invisible prey, that same instinct can spell danger outdoors. From October 2025, new rules in the City of Melbourne will help protect both cats and native wildlife.**

Cats will need to stay on their owner's property from 6 pm to 8 am and avoid sensitive areas such as rivers, waterways and major parks unless safely leashed or in a carrier.

The changes were introduced in conjunction with the City of Melbourne's Domestic Animal Management Plan 2025–29, which guides responsible pet ownership across the city. Together, they form part of a long-term effort to balance animal welfare with the protection of native species.

These measures aren't about restriction – they're about keeping cats safer and healthier. Indoor cats are less likely to be injured, pick up disease or go missing, and they tend to live longer.

Jade Currie, Animal Behaviour Consultant at the Lost Dogs' Home, says indoor life can be just as rewarding with a few smart adjustments:

"Provide vertical spaces, hiding spots, play opportunities and window perches – enrichment lets cats express natural behaviours and reduces stress." She adds that the key is patience and positivity.

"Introduce new experiences slowly and associate them with good things – treats, toys and praise. That way, cats feel safe, curious and confident in their indoor world."

Cr Dr Olivia Ball, Deputy Lord Mayor and portfolio holder for Environment, stresses why the changes are necessary:

"Cats can't help having a strong hunting instinct, day and night, no matter how much we love and feed them. But our native wildlife hasn't evolved to deal with feline predators, and unfortunately, cats have done immeasurable damage since being introduced to Australian ecosystems."

She also reassures owners: "The great majority of cat owners in the City of Melbourne already keep their cat inside all the time. For the rest, who are used to roaming, this is a big change, but it's vitally important. Please reach out for information and advice on how to smooth the transition and keep your cat happy and healthy indoors."

### QUICK TIPS FOR A HAPPY INDOOR CAT

- **Vertical space:** Cat trees, shelves or window perches let cats climb and observe.
- **Playtime:** Wand toys, laser pointers, or puzzle feeders satisfy hunting instincts.
- **Safe outdoors:** Catio enclosures or harnesses let cats enjoy fresh air without risk.
- **Positive reinforcement:** Use treats and toys to help cats explore new spaces confidently.
- **Gradual transition:** Increase indoor time slowly, especially for outdoor-loving cats.

Visit [melbourne.vic.gov.au/newcatrules](https://melbourne.vic.gov.au/newcatrules) for more information.

The City of Melbourne currently provides guides and practical support, including low-cost desexing and vet checks, to help owners adapt to the new rules. This is in addition to providing free registration for all cats and dogs for the next registration period (April 2026 to April 2027).

Containment isn't just about rules or restrictions: keeping cats safe at home protects wildlife – and gives our feline friends the long, comfortable lives they deserve.



*Indoor cats often live longer.*

## Melbourne's guide to affordable food



**Melbourne is famous for its cafés, markets, and world-class dining, but not everyone in our city can easily put a healthy meal on the table. The rising cost of living and financial pressures mean more people are skipping meals or relying on food relief services.**

The City of Melbourne is stepping up to make a real difference. The Community Food Guide and Map is a handy tool to help anyone find free or low-cost meals, food banks, community gardens, and cooking classes in their neighbourhood.

Programs like programs like Open Table's Local Lunch Club at Kathleen Syme Library bring people together over a free vegetarian meal made from donated ingredients. It is not just about food, there is live music, friendly faces, and a chance to learn about local community services. Similarly, our FareShare Freezer located at the library provides nutritious prepared meals to anyone in need, etc provides pre-prepared, nutritious meals to anyone in need, with more than 10,000 meals shared since July 2024.

For fresh, affordable produce, residents can visit the Community Grocer in Carlton or the Kensington Community Fresh Food Market.

If you would like to grow your own vegetables, the city supports communal gardens like the Kensington Stockyard Food Garden and the FoodCubes at Kathleen Syme Library.

Residents of all ages can join Grow Together workshops, learning practical gardening skills to grow your own produce, while connecting etc community. You can also pick up free seasonal seeds or participate in the Gardens for Wildlife program, growing native plants that are good for cooking and local wildlife.

Through the Food City 2024–34 Policy, we are working with local groups and the food industry to create a sustainable, resilient, and inclusive food system, so no one has to choose between paying bills and feeding their family.

### AFFORDABLE FOOD IN MELBOURNE AT A GLANCE

- **Community Food Guide & Map** – Find community meals, food banks and affordable groceries near you.
- **Local Lunch Club** – Free monthly meal provided by Open Table and live music at Kathleen Syme Library.
- **FareShare Meals** – Free pre-packaged meals are currently available at Kathleen Syme library.
- **Local markets** – Fresh, low-cost produce at the Community Grocer in Carlton and Fresh Food Market in Kensington.
- **Grow Together Workshops** – Learn to grow your own fruit and veggies sustainably.

Visit [melbourne.vic.gov.au/news](https://melbourne.vic.gov.au/news) and search 'affordable food' to find out more.



## Pier 17 Bar and Grill brings fine-dining flair to Docklands waterfront

Docklands is set to welcome a new addition to its NewQuay Promenade, with Pier 17 Bar and Grill preparing to open its doors along the waterfront this December.

WORDS BY  
JON FLEETWOOD



The venture is the brainchild of long-time friends and business partners Ricky Rataul and Raman Kanda, who each have spent more than 15 years in Melbourne's hospitality and development industries.

Mr Rataul said the new venue aimed to bring something special to Docklands.

"We want to deliver something modern and exciting for the local community," he told *Docklands News*.

Pier 17 Bar and Grill will offer a contemporary bar and dining space with a focus on quality produce and presentation.

Mr Rataul said the menu would feature elegant entrees such as caviar, imported scotch selections and wine pairings, alongside "fancy" mains including premium chicken and lamb dishes.

"Our chef, Chil, is from Nepal and brings incredible skill and creativity to the kitchen," Mr Rataul said. "We've got a great team coming together to deliver something really special."

He said opening a restaurant had been a long-held dream for both owners.

"It's been a passion for a while," he said. "We talked about doing something like this years ago, and now it's finally happening. We tried looking elsewhere, but we kept

coming back to Docklands. It's the right place."

Designed with couples and social diners in mind, the restaurant will offer what Mr Rataul described as "a place for dates, drinks and good food."

While this marks the pair's first hospitality venture together, their partnership stretches back decades.

"Raman and I have known each other since we first arrived in Australia – we even went to school together," Mr Rataul said. "We've worked on small developments over the years, but this is our first food business together."

Pier 17 Bar and Grill is expected to open in the coming weeks and will add to Docklands' growing mix of waterfront dining and nightlife options. ●

## Community Safety Officers hit Melbourne's streets as council unveils \$2m patrol program

The City of Melbourne's new Community Safety Officers (CSOs) began patrolling inner-city hotspots on November 3, with Lord Mayor Nick Reece declaring the 11-member team a "big step" towards a safer and more welcoming city.



WORDS BY  
JON FLEETWOOD



Speaking alongside councillors Rafael Camillo and Gladys Liu, Cr Reece said the uniformed officers would provide a visible presence across known trouble spots and neighbourhoods including Elizabeth St South, Bourke St, Swanston St, Carlton, Docklands and Southbank.

"We want a Melbourne where every person feels safe and every person can be safe," the Lord Mayor said. "This is the biggest shake-up to safety arrangements in Melbourne since the introduction of PSOs almost 15 years ago. It's a big step, but it's a necessary step."

Cr Reece said the CSOs were authorised officers of the City of Melbourne with powers to enforce local laws, issue directions and, where necessary, make arrests.

"They absolutely can make arrests and, importantly, they are trained and equipped to do so," he said, adding that powers cover "anti-social and aggressive behaviour, and consumption of alcohol or drugs in public places".

Officers will patrol seven days a week, working 11-hour shifts to align with peak periods. They will wear protective vests and

body-worn cameras and carry handcuffs.

The Lord Mayor stressed CSOs were not a replacement for police and did not have investigative powers.

The program drew more than 600 applications for the 11 roles, with many successful candidates bringing experience from policing and corrections.

"We've had six weeks of intensive training," Cr Reece said, citing modules in de-escalation, trauma-informed practice and mental health. "Sometimes the question will be, 'Hey, what are you up to?' – most of the time it will be, 'do you need help?'"

During an earlier trial involving two security officers, the City recorded 1500 incidents managed and more than 50 people connected with support services.

However, as reported by sibling publication *CBD News*, homeless people, legal services and community health organisations raised concerns over the behaviour of the security guards, alleging that they had intimidated people begging and sleeping rough.

The council has allocated about \$2 million to launch the program, covering equipment, training, salaries and oversight. Cr Reece said the CSOs were designed to work "hand-in-glove" with Victoria Police, complementing the council's Safe City Camera operations. ●

ESCALA  
NEWQUAY

Developed by  
MAB



7 Aquitania Way, Docklands

**Fantastic opportunity for a growing family, or the astute investor. Brand new three-bedroom townhouse located in the award-winning Escala NewQuay building.**

Designed by renowned Six Degrees architects, Escala's highlights include its striking red brick façade, generous high concrete ceilings, library, rooftop garden, gym, and heated indoor pool. The master bedroom includes a large walk-in robe, separate laundry and a dedicated study zone on the ground floor.

- Less than 100 metres to Docklands Primary School
- Less than 200 metres to District Docklands shopping centre
- Access the free city tram network
- Easy, direct access to leading universities including Melbourne University and RMIT

Contact Adam Gao, MAB Sales Consultant to arrange an inspection  
M. 0466 868 063  
[escalanewquay.com.au](http://escalanewquay.com.au)



DOCKLANDS  
HEALTH



### SERVICES AVAILABLE:

- ▶ Physiotherapy
- ▶ Chiropractic
- ▶ Massage
- ▶ Psychology
- ▶ Nutrition
- ▶ Bowen Therapy
- ▶ Pilates
- ▶ Kinesiology
- ▶ Exercise Rehabilitation



Shop 4/860 Collins St, Docklands, 3008  
(03) 9088 3228 [www.docklandshealth.com.au](http://www.docklandshealth.com.au)

BOOK ONLINE  
[DOCKLANDSHEALTH.COM.AU](http://DOCKLANDSHEALTH.COM.AU)



# Philip Le Liu: A steady hand at Town Hall

“Now in his third term on the City of Melbourne council, Cr Philip Le Liu has become one of the council’s more experienced and pragmatic voices. Known for his financial discipline, Cr Le Liu’s journey to Town Hall has been anything but conventional.”

WORDS BY  
JON FLEETWOOD



Before entering local government, Cr Le Liu worked as a management consultant but found the corporate world “not fulfilling enough”. Seeking something more meaningful, he spent time in China launching an education technology start-up and working with the Australia-China Youth Association, a not-for-profit organisation that supported thousands of Australian international students studying in China. On his return to Melbourne, Cr Le Liu made an unlikely move into politics, standing as the Liberal candidate for the seat of Melbourne in the 2016 federal election, which was a contest few were willing to take on against Adam Bandt. However, Cr Le Liu punched above his

weight and defied expectations, becoming the first Liberal candidate to outpoll Labor on primary votes in the electorate’s history. His performance caught the attention of the late long-serving councillor Ken Ong, who invited him to join his council ticket. “Without Ken Ong and his support, I wouldn’t be here,” Cr Le Liu said. “He gave me my start, and I’m very grateful for that.” Since being elected, Cr Le Liu has built a reputation for his focus on responsible financial management. During his previous term, as head of the finance portfolio under former Lord Mayor Sally Capp, he oversaw four budgets and pushed the council to return to surplus. “It’s not sexy,” he said. “But getting the City of Melbourne back in the black was crucial. We couldn’t just keep spending like before – we had to fix our financial position.” However, there is still a long way to go, according to Cr Le Liu, who said the biggest challenge the council now faced was completing the initiatives it had promised, drawing attention to the redevelopment of Queen Victoria Market and the Greenline project. “We have this habit of launching new initiatives before completing the old ones,” he said. “It’s time to consolidate, not just create.” This term, Cr Le Liu has taken on a new challenge as head of the creative and arts portfolio, which he volunteered to do following a proposed restructure that would have merged arts with the tourism and events portfolio. “Arts deserves its own champion,” he said. “Melbourne is a city defined by its arts and culture. We can’t treat it as an afterthought.” While he doesn’t consider himself an artist, Cr Le Liu’s commitment stems from a belief that strong cultural policy is essential to Melbourne’s identity. “I gave up other portfolio opportunities



COUNCILLOR PROFILE

to take it on,” he said. “Someone needed to stand up for it.” Cr Le Liu’s passion for standing up for what he believes in isn’t new. Earlier in his council career, he advocated for international students, believing they had been overlooked. “When I started, there was no real budget or recognition for international students,” he said. “After four years, we’d created programs, internships and proper engagement. We changed the culture within council to include them in everything we do.” From EY to Town Hall, Cr Le Liu has donned many hats, but at the heart of all his ventures has been a desire to make long-lasting change and to always be a voice of reason. ●

# EUREKA 89

Eureka 89 offers an exquisite dining experience with views of Melbourne that elevate every occasion. Located on the 89<sup>th</sup> floor of the iconic Eureka Tower, our dining options present a unique blend of contemporary cuisine crafted from locally sourced ingredients. At nearly 300 metres in the sky, it truly is...

Book now and receive **10% off Dining\***

Use promo code **LOCAL25**

## AN EXPERIENCE ABOVE ALL ELSE

### ALTITUDE DINING EXPERIENCE

Delight in a sophisticated 3-course choice menu experience that blends Melbourne's sights, sounds, and flavours, featuring Melbourne Skydeck experiences.

### CHEF'S TASTING

Indulge in a premium dining experience with our 6-course or Signature 8-course Tasting Menu, thoughtfully curated by our award-winning executive chef, Renee Martillano.

BOOK NOW [EUREKA89.COM.AU](https://eureka89.com.au)

\*T&Cs apply. Promo code can only be redeemed once per person. Only available for use at checkout online and not available for on-site redemption. This offer is valid for bookings until 31 December 2025 for dining until 31 January 2026. This offer is not applicable on specialty events.





# West Gate Tunnel project delivers new cycling and road extensions at Dynon Rd and Wurundjeri Way

Two major West Gate Tunnel Project milestones are set to improve safety and connectivity between Melbourne’s west, Docklands, and the CBD, with the opening of the Wurundjeri Way extension and a new pedestrian and cycling bridge along Dynon Rd.

WORDS BY  
JON FLEETWOOD



The Wurundjeri Way extension, which opened in October, is Melbourne’s first new CBD bypass in 25 years, connecting Dynon Rd to Flinders St.

It provides a toll-free route for motorists travelling between the western suburbs and southern parts of the city, while easing pressure on congested routes such as Spencer and King streets.

The new connection is expected to take up to 5000 vehicles a day off nearby roads and improve access for the 73,000 workers and 17,500 residents in Docklands. It will also help relieve congestion during major events at Marvel Stadium and across Docklands.

Transport Infrastructure Minister Gabrielle Williams said the extension would “transform travel across the city and western suburbs – while easing traffic on busy city thoroughfares like Spencer and King”.

Alongside the new road, the West Gate Tunnel Project has also delivered a 440-metre walking and cycling bridge across the rail yards near North Melbourne Station.

The bridge provides a new, off-road link

between the Moonee Ponds Creek Trail, North Melbourne Station, and the city.

The three-metre-wide bridge accommodates walkers, runners, cyclists, wheelchairs, mobility scooters, and prams, offering a safer and more accessible route between the city’s west and central Melbourne.

It gives bike riders from the west two protected routes into the city, one via Footscray Rd, connecting directly to Docklands and Melbourne’s cycling network, and another via Dynon Road, linking to North Melbourne, Carlton, and surrounding suburbs.

“Too many vulnerable road users have been seriously injured or killed on our roads, and we’re determined to change that,” Minister for Roads and Road Safety Melissa Horne said.

“Through projects like this, we’re creating safer, separated connections for cyclists and pedestrians – protecting lives and reducing trauma across our network.”

The bridge also connects with the recently opened green bridge across Footscray Road and Waterfront Way. It will tie into the

project’s future veloway, a 2.5-kilometre elevated cycling path from Footscray to Docklands.

An elevated section of the new path features vibrant multi-coloured panels, echoing the colour scheme of new barriers along the West Gate Freeway and the Maribyrnong River Bridge.

Together, these works form part of the West Gate Tunnel Project’s 14 kilometres of new and upgraded walking and cycling paths, aimed at improving safety and accessibility for all road users.

Once complete, the broader project will deliver a second river crossing, remove 9000 trucks a day from local roads, and provide faster, safer and more reliable connections between Melbourne’s west and the CBD.

To celebrate the milestone, the public can explore the new tunnel at the West Gate Tunnel Discovery Day on Sunday, November 16, followed by a community event at Yarraville Gardens. Registrations are open at [westgatetunnelproject.vic.gov.au/discoveryday](https://westgatetunnelproject.vic.gov.au/discoveryday) ●



## Docklands to Portarlington ferry service extended for another two years

The popular Docklands to Portarlington ferry service has been given the green light to continue sailing for at least another two years.

The state government has announced an extension to the route that has become a vital transport and tourism link between Melbourne and the Bellarine Peninsula.

Since its launch in 2017, the Portarlington ferry has carried around 120,000 passengers each year, cementing its place as both a convenient commuter option and a major driver of tourism.

The decision to extend the service will ensure residents, workers and visitors can continue to enjoy a direct, scenic connection between Victoria Harbour’s Yanongung Quay and Portarlington Pier until at least 2027.

Minister for Public and Active Transport Gabrielle Williams said the ferry’s success reflected the growing demand for sustainable and affordable regional transport options.

“Through cheaper V/Line fares and our investment in train, bus and ferry services, we’re supporting regional tourism and communities in the Bellarine Peninsula,” she said.

Passenger numbers have continued to surge, with more than 15,000 people using the ferry during the January summer peak, and steady patronage recorded through winter. The service has helped to ease road congestion while offering a car-free alternative for day-trippers and locals commuting to the city for work.

The tourism impact has been equally significant. According to Tourism Research Australia, Portarlington welcomed 677,000 visitors in 2024, a 36 per cent increase on the previous year. The town was recently recognised with a Bronze award at the 2025 Victorian Top Tourism Town Awards, while operator Port Phillip Ferries took out the title of Best Major Tour & Transport Operator at the 2024 Victorian Tourism Awards. ●

# Sarah Witty

Federal Member for Melbourne

I am your local voice in Canberra. Tell me what matters to you.

CONTACT ME

(03) 7066 6595  
[Sarah.Witty.MP@aph.gov.au](mailto:Sarah.Witty.MP@aph.gov.au)



# A FREE 15 FOR EVERYONE: PARK, DASH, DONE

You can now park for free for 15 mins in any City of Melbourne metered parking space.

**Good news for anyone who's ever needed to make a quick stop somewhere around our city - you can now park for free for 15 minutes in any metered parking space in the City of Melbourne**

Whether you're dashing in for a coffee, picking up dry cleaning, or chasing that last elusive Pokémon, all paid street parking bays now offer 15 minutes of free parking through the EasyPark app.



You can stop in a No Parking space for up to 2 minutes.

The program was first rolled out in the CBD in 2023, and based on its success, the City of Melbourne has now expanded it across the entire municipality. Since its launch, drivers have clocked up more than 15 million minutes of free parking and saved over \$1.3 million.

The move has received a big thumbs up from the small business community.

"It's a fantastic initiative. A lot of our traders rely on convenience - people stopping on their way to work or school, or making a quick stop after hours," said Sylvia Hungria, President of the North and West Melbourne Precinct Association.

As the owner of a small business herself, Sylvia knows the difference parking can make to a business bottom line.

"Anything that makes it easier for people to support their local traders is a win for our small business economy. The ability to park easily for 15 minutes can be the difference between someone deciding to stop and support a local business, or driving past. It's a simple idea with a big impact," Sylvia Hungria said.

Some locals have really made the most of it. One particularly efficient Melburnian notched up around 1,100 free sessions in a single year, averaging about three quick stops a day.

Keep in mind: you get 15 minutes free parking per EasyPark zone each day. You could use 15 minutes in one area, then 15 in another, but multiple stops in the same zone count toward the same 15-minute daily total.

Melbourne is also making short-stop parking easier with 2-minute 'No Parking' spaces. You can stop in these areas for up to two minutes, provided you stay within three metres of your vehicle. They are ideal for quick pick-ups and drop-offs, such as passengers, bags, or deliveries, and are usually placed as the first space after intersections in the central city, making them easy to spot and use.

So, next time you're out and about doing a quick errand, open the EasyPark app, start a parking session and stop that session when you leave. If you're in and out within 15 minutes, we'll waive the parking fee.



Use the EasyPark app to access the free parking.

#### 4 TOP TIPS TO AVOID FINES

- **Read the signs.** Make sure you understand the time limits, restrictions, and whether it's a loading zone, disabled bay, or clearway. Even if you've parked there before, signage can change.
- **Don't overstay your welcome.** If it's a 2P area, that means a two-hour maximum, even if you keep topping up your payment. You must leave the area after the time limit has ended.
- **Use the right bays.** Loading zones are for trucks, couriers, taxis, and G-class registered vehicles — not for popping in for a coffee or a loaf of bread. Use the 15-minute free parking instead.
- **Get your rego right:** When using the EasyPark app, make sure you enter your correct vehicle registration and parking zone number. Pay close attention to 'O' and zero when entering your registration.

For more info visit  
[melbourne.vic.gov.au/free15min](https://melbourne.vic.gov.au/free15min)

#### KEEP IN TOUCH

To stay connected with all the latest news from the City of Melbourne, follow us on social media and subscribe to *Melbourne News* at

[news.melbourne.vic.gov.au](https://news.melbourne.vic.gov.au)

#### Connect with us

[/cityofmelbourne](https://www.facebook.com/cityofmelbourne)  
[@cityofmelbourne](https://www.instagram.com/cityofmelbourne)  
[@cityofmelbourne](https://www.x.com/cityofmelbourne)





# Anne Jolic: Guiding Docklands from development to discovery

“

Nearly 30 years after the first piles were driven for Colonial Stadium (now Marvel Stadium) and Melbourne's newest suburb began to rise from former port land, Docklands still provokes strong opinions.

”

WORDS BY  
SEAN CAR



For some, the job is largely done, and the time has come to hand the keys to the City of Melbourne. For others, the hardest work is what follows construction: stitching together places, programs and partnerships so a waterfront city truly hums.

Development Victoria's (DV) newly appointed CEO, Anne Jolic, has lived that story from the inside and says her focus is now on Docklands' "maturity phase," even as the state's development agency prepares for an eventual transition.

"I started as a grad actually under the predecessor of Development Victoria," she told *Docklands News*. "I studied planning at RMIT. In final year they give you a chance to do a work experience placement. It was the only developer placement. That was the only one I applied for and basically got employed and then really never looked back. So, I've always been fond of the organisation."

That placement was with the Urban and Regional Land Corporation, which ultimately merged with the original Docklands Authority, and Ms Jolic ultimately found herself working under its founding chief John Tabart at what would later become VicUrban.

"I worked under John Tabart for a little while," she said. "I feel like I was there in that formative coming together. My desk was sort of overlooking Harbour Esplanade."

Mr Tabart is remembered inside and outside government for insisting on long-term thinking and partnership delivery. Those lessons stuck. Asked what she learned most from him, Ms Jolic didn't hesitate.

"Vision. He was a real visionary in terms of precinct development and also that it takes time, it takes partnerships," she said. "He was also very generous in letting junior people do some really big things." She remembers pitching, as a very young planner straight out of uni, for a project with Melbourne Water because "John let you do that."

Her CV since those early days reads like a Docklands family tree. She served as the Victorian president of the Property Council of Australia in between stints at Mirvac and Lendlease, seeing the likes of Yarra's Edge and Collins Wharf from the private side.

"I feel like I know parts of it [Docklands] really well. I saw it in its very early days and particularly under John, that vision for what Docklands could become."

When asked if she thought Docklands deserved a harsh rap based on what some think it should be by now. "Yeah, I think is can," Ms Jolic said. "It probably has had a hard rap at times. But when you look at any major precinct like that, they do take time."

She remembers when there were only a couple of restaurants at NewQuay, some landscaping around AFL House and not much else. "That is not that long ago," she said. "When you think of all the businesses that are down there now and the 17,000 residents and all the different development precincts, I actually think it is a pretty good



Photo: Hanna Komissarova.

example of development done well."

Ms Jolic is quick to credit a deliberate multi-developer model that pushed the pace. "That key strategic piece of different developers doing different precincts actually meant development happened more quickly," she said. "Had you just gone one at a time, it would have been a much slower evolution."

If the first decades were about enabling land release and construction, she said that the next period must be about activation.

"I would just really like to see it more thriving," Ms Jolic said. "We are probably at a point where we have built a lot of it through our partnerships. Now it is about how we better it and activate it more."

"It is not just us. We are enabling and we have had this enabling function to this point, but now how can we bring everyone together in a more fulsome way to think about activation. When you look at great precincts overseas, it is about activation and programming. It is not just building."

That leads inevitably to Harbour Esplanade. She sees the waterfront boulevard as the natural place to anchor this next phase and says the joint venture with the AFL to redevelop Marvel Stadium's edge is pivotal.

"For me, probably the AFL joint venture is a good one," Ms Jolic said. "How do we take Harbour Esplanade and now really make this an active waterfront and connect city to water."



With those Grimshaw Architects renders of the redevelopment in mind, she added: "You get a vision of what this place could be, which is so much progress from when I used to sit at the desk and look out and just see the water and the Cow Up A Tree."

"That [Harbour Esplanade] could be a world-class waterfront, F&B (food and beverage) dining precinct with the stadium so close to the CBD. Hopefully more office, more housing as well. You do not turn your back on it. You are embracing the water."

With Central Pier gone, locals have experienced open water there for the first time in decades. Ms Jolic understands the appeal. DV's heritage permit "does not require it to be rebuilt," she noted. "People enjoy the open water experience for the first time. If we can get really good activation of Harbour Esplanade and that open water experience, that is a good goal. It is rare to get that sort of city-to-water connection."

The question that always follows is who should lead this next chapter. Many in the community argue that DV's role should recede, and more planning control should shift to Town Hall.

Ms Jolic agrees there will be a transition, but not a hard stop.

"We will be at Docklands for as long as we need to be," she said. "It is about how we complete the missing pieces, but also how we hand over that responsibility to others who will own it in the long term and manage it in the long term."

That will include staged asset transfers and a focus on getting "the right buy-in from all the partners so that there is ongoing improvement, ongoing curation and programs." The oft-rumoured 2030 departure is not Ms Jolic's timeline.

"There is a natural point in time where we would have said the development is done and that is definitely not 2030," she said. "It will be beyond that. My desire is it happens in a staged, orderly way."

Connectivity between the three major precincts, E-Gate and Fishermans Bend remains a live debate. The ferry terminal's future is also not DV's call, but she sees a convening role. "Part of our role is trying to bring others who are responsible for those things together to have the conversations," she said.

Even as she talks activation, housing delivery remains core business for DV in Docklands.

"There is still more housing," she said. "There are still a few sites that have not come up yet just because of market and that are still planned. As the state's developer, we have a real role to play in housing

supply. I think the more housing we can deliver, in all sorts of tenure, in build to rent but also build to sell, the better. It [Docklands] does not have enough in terms of social infrastructure and parks. Having the waterfront is amazing and I think it can sustain housing."

On Lord Mayor Nick Reece's floated seafood precinct for the waterfront, she smiled.

"It is not a bad idea. I like seafood," she said. "If you do not like seafood, maybe it is not."

The point, she added, is to leverage the water in ways that feel authentic and lively.

"It is a bit of what we can do together to help fund and invigorate programming. The Boat Show is great. The more of that sort of stuff where Docklands is known to have these great events, and it is all planned and we know we get good visitation."

For her, few things capture the spirit of Docklands quite like a quiet afternoon at the Library at the Dock – her favourite spot in the precinct. She recalls spending hours there playing games with her children when they were younger, a personal connection made all the more special given the library was delivered through a partnership between the City of Melbourne, Development Victoria (then Places Victoria) and Lendlease.

And when it comes to Docklands' best-kept secret: Saluministi's calamari panini with chilli.

It is impossible to hear Ms Jolic talk about Docklands without hearing an echo of John Tabart's core tenets. He used to say cities grow organically and that the job of government is to set a clear vision, lock in the right mix and insist on delivery.

Ms Jolic's version is shaped by 25 years of delivery and a practical instinct for partnership.

"We take a lot of lessons from Docklands," she said. "What went well, what did not go well. A lot of it has actually been a success story. The task now is to bring everyone together to activate and program the waterfront."

She wants Melburnians to fall in love with Docklands for what it is becoming rather than what it once was not.

"If people feel like it is a place where they can visit and they love and it is vibrant and it is thriving, I feel like any detractors will fall in love with the place. That is the plan." ●



# From recovery to resilience: Docklands’ dragon boat club for breast cancer survivors

When Docklands local Sue Mason was recovering from breast cancer surgery in 2021, she sat by her window listening to the drum of dragon boats echoing across Victoria Harbour.

WORDS BY  
JON FLEETWOOD



“I could hear them while I was recovering,” she said. “I’d sit there thinking, when I’m well enough, I’ll go down and see what they’re doing down there.”

What she found was the DAMBusters BCS Dragon Boat Club – a team made up largely of breast cancer survivors and their supporters – and it would go on to transform her recovery and her outlook on life.

Sue joined the club soon after finishing treatment, and three years later, she’s now the president. For her, dragon boating has become much more than a sport.

“It’s something you can do after breast cancer,” she said. “There are so many things you have to give up or can’t go back to after surgery, but paddling is great for recovery. It strengthens your body, but it also gives you a sense of belonging again.”

That sense of community, she said, has been just as powerful as the physical rehabilitation.

“Most of our members have been through breast cancer themselves. We all understand each other – the surgeries, the treatment, the emotional ups and downs. If you need to talk, there’s always someone who’s been there. We’ve become incredibly close, not just as teammates but as friends.”

The DAMBusters, based at Victoria Harbour in Docklands, are part of a global network of breast cancer survivor dragon boat teams.

The club regularly competes in regattas



across Australia and will represent Australia next year in France at the International Breast Cancer Paddlers’ Commission (IBPCP) festival, which brings together teams from around the world every four years.

Recently, the club celebrated a new partnership with Z&J Sports, which donated a set of custom-made, lightweight paddles for the team to use in competition.

Sue said the gesture meant a lot to the team, with Z&J Sports donating the paddles so that they can take them to France to show to other international teams.

For Z&J Sports sales and marketing manager Usher Shao, the partnership was a natural fit.

“DAMBusters is a club for a great cause,” Mr Shao said. “Their members are women who have gone through or are going through treatment, and they’ve built this incredible community around dragon

boating. We were really touched by their story and wanted to help.”

The collaboration began after a chance meeting at a sponsorship event for another local team.

“We met the DAMBusters while sponsoring the Melbourne University Dragon Boat Club,” Mr Shao said. “Their story really inspired us. It aligns perfectly with our brand values – determination, teamwork, and community.”

Headquartered in China with an Australian base in Geelong, Z&J Sports is one of the world’s leading manufacturers of water sports equipment.

“We’ve supplied paddles used in regattas across Asia and even by Harvard University’s Dragon Boat Club,” Mr Shao said. “Our goal is to grow connections within the Australian water sports community, and working with the DAMBusters has been a highlight of that journey.”

While competition is part of the DAMBusters’ routine, Sue said it was the camaraderie that truly mattered.

“We’ve won a few trophies, but it’s not really about being the fastest team,” she said. “It’s about celebrating life after breast cancer, staying active, and supporting each other.”

The club trains on Sunday mornings and Tuesday nights, welcoming both survivors and supporters.

“We even have people who’ve lost a partner, mum, or sister to breast cancer,” Sue said. “Everyone is welcome in the boat. You don’t need any experience; we’ll teach you everything.”

“Joining DAMBusters gave me my confidence back,” she said. “It reminded me that life after breast cancer can still be full, active, and connected. Every time I get on the water, I feel grateful to be here – and to be part of this amazing group of women.” ●

## Docklands’ Shipping Control Tower joins the Victorian Heritage Register

Docklands’ recently restored Shipping Control Tower has been officially added to the Victorian Heritage Register, recognising its pivotal role in Melbourne’s maritime history and its enduring presence as one of the city’s most distinctive industrial landmarks.

WORDS BY  
SEAN CAR



Perched at the western tip of the south arm of Victoria Dock, the 40-metre reinforced concrete tower opened in April 1966 and served as the operational heart of Melbourne’s shipping movements for three decades.

From its commanding vantage point, master mariners coordinated the arrivals and departures of vessels navigating Victoria Harbour and the Yarra River – a nerve centre that kept Melbourne’s busy port ticking through its most intensive years of expansion.

Designed by architect C. J. Smith for the Melbourne Harbour Trust and constructed by W. J. Cody, the tower’s twin concrete piers support a two-level operations deck,

complete with a crow’s nest that once bristled with electronic and manual signalling equipment.

It was decommissioned in the 1990s when the port’s operations shifted downstream, but its presence at North Wharf remains a powerful reminder of the era when Docklands was the beating industrial heart of the city.

In its heritage citation, the Heritage Council of Victoria described the tower as “emblematic of the importance of maritime trade in driving Victoria’s prosperity” and noted that its prominence and design “enable its function and importance to be readily appreciated.”

It was listed under two key criteria: Criterion A, for its importance to the course of Victoria’s cultural history, and Criterion D, for its value as an outstanding example of its kind.

The listing follows a meticulous year-long restoration by Development Victoria, which has seen the tower’s decaying exterior repaired, its crow’s nest reconstructed, and its distinctive form returned to its 1960s appearance. Once vandalised and covered in graffiti, it now gleams once again over the waterfront.

While there are currently no formal plans to commercialise the site, the restoration has sparked community imagination about potential future uses – from a gallery or viewing platform to a restaurant. ●





# Japan's Marubeni joins AsheMorgan to deliver major Docklands build-to-rent precinct

The owner of The District Docklands, AsheMorgan, has partnered with Japan's Marubeni Corporation – alongside Haseko Corporation and Mizuho Leasing – to deliver one of Australia's largest build-to-rent (BTR) projects on a long-vacant Footscray Rd site.

WORDS BY  
SEAN CAR



Branded "District Living," the \$600 million precinct will rise next to The District and Docklands Primary School, ultimately delivering more than 900 apartments across two towers. Stage One comprises 626 apartments, with construction due to start next month after the appointment of Kapitol as builder.

AsheMorgan says the tie-up with Marubeni – one of Japan's largest trading and investment houses – marks the company's first foray into Australia's BTR market. "Partnering with Marubeni, Haseko, and Mizuho Leasing on District Living is an exciting step for AsheMorgan and is reflective of the group's confidence in the project," AsheMorgan principal Mendy Moss said.

"Together, we are committed to creating a thriving rental community that sets a new benchmark for quality and amenity in Melbourne."

Marubeni's general manager for overseas real estate, Noritake Miyaguchi, said the company saw "enormous potential



in build-to-rent as a housing solution in Australia," adding it looked forward to working with AsheMorgan to bring the project to life.

The latest milestone follows the City of Melbourne's endorsement of revised plans in April 2024, when councillors backed the development subject to height reductions to protect sunlight to Docklands Primary School. The proposal has since cleared state planning, paving the way for delivery.

When complete, District Living will provide a mix of studio, one-, two- and

three-bedroom apartments, including a unique offering of Soho-style dual-level residences aimed at families. Stage One alone features more than 2200 sqm of resident amenity – a wellness centre with gym, plunge pool, sauna and steam room – plus a sky terrace and more than 1400 sqm of private outdoor space with dog-friendly areas and landscaped green pockets. The plan also includes ground-floor retail and 1700 sqm of new public open space.

The fully electric project targets a 7.5-star NatHERS sustainability rating. Kapitol

says delivery will leverage advanced digital design coordination, 4D sequencing and prefabrication to lift precision and efficiency.

Located beside AsheMorgan's established mixed-use precinct at The District, the BTR community is planned to benefit from existing retail and entertainment and a future pedestrian link to North Melbourne Station.

The Docklands scheme comes amid record-low rental vacancy and a widening gap between population growth and new housing supply – dynamics AsheMorgan argues strengthen the case for large-scale rental communities.

"District Living will deliver much-needed apartment stock to the market and serve the city for decades to come," Kapitol director Andrew Deveson said.

Council previously described the project as a "landmark" for Docklands, highlighting the creation of green open space and new public realm.

With approvals secured and a builder appointed, attention now shifts to breaking ground on Stage One and realising one of Melbourne's largest purpose-built rental neighbourhoods.

As reported by *Docklands News* last year, the Victorian School Building Authority (VSBA) has been exploring opportunities for the future use of the site at the south-eastern corner of Little Docklands Drive and Footscray Rd opposite Docklands Primary School (DPS).

Development Victoria, which currently owns the land at 24 Little Docklands Drive, has nominated the corner site known as "Building 4" opposite DPS for "civic use" as part of the approved development plan for the precinct. The VSBA is understood to be continuing its investigations into the area. ●

Melbourne Airport  
Noise Sharing Plan



## Have your say on the Melbourne Airport Noise Sharing Plan

A Noise Sharing Plan is being developed to manage and distribute aircraft noise across communities when Melbourne Airport's third runway opens.

The Noise Sharing Plan aims to provide periods of respite from aircraft noise, balancing airport operations with community wellbeing.

### How to provide feedback

The Melbourne Airport Noise Sharing Plan survey is now live. Scan the QR code to take the quick survey.

### Why is your feedback important?

Your input will help shape how flight paths and runway use are planned, ensuring the Noise Sharing Plan reflects what matters most to the community.

Community feedback is vital to make sure the consultation process is transparent and incorporates local needs.

### Meet the team

Visit one of our community drop-in sessions. Follow the QR code to our website for details about dates, times and locations.



MELBOURNE AIRPORT



BOOK A TOUR TODAY



Future Focused  
THE CITY SCHOOL WHERE GIRLS EXCEL





# Elevated festivities at Eureka 89

Eureka 89 is Melbourne’s premier destination for those seeking a sophisticated dining experience, ideal for getting into the festive spirit.

Whether during Christmas or while counting down to the New Year, Eureka 89’s menus are meticulously crafted by award-winning executive chef Renee Martillano.

Towering nearly 300 metres above the city and perched atop Melbourne Skydeck on the 89th floor of Eureka Tower, this exceptional dining and event space guarantees that every occasion is extraordinary.

‘Tis the season to treat yourself to something special, as Eureka 89 offers a delightful array of events perfect for sharing a meal with your loved ones, creating a magical atmosphere to celebrate Christmas.

On Christmas Eve, indulge in an all-inclusive three-course lunch or four-course dinner option, with pricing starting from \$210 per adult, or join Eureka 89 on Christmas Day for a festive four-course menu, with prices from

\$390 per adult. As you savour these gourmet offerings, soak in the stunning views of Melbourne’s skyline, twinkling with holiday cheer.

To close off the year, ring in the New Year with Eureka 89’s “Elevation New Year’s Eve”, featuring a dining experience that offers the perfect setting to bid farewell to the year in style.

Guests can choose between two areas: the Southern Point Room, which is ideal for gathering with family and friends in a warm atmosphere, or the vibrant Northern Point Room, promising lively entertainment for those eager to celebrate the arrival of the new year.

Prices start from \$595 per adult. Whichever space you select, Eureka 89 guarantees a night to remember, filled with delectable cuisine, spectacular views, and an electric atmosphere.

Lastly, if you are still on the lookout to host an end-of-year event high in the clouds, whether for a corporate function, birthday, or other special milestone, hosting it at Eureka 89 offers a unique location that will leave a lasting impression on your guests for all the right reasons.

Eureka 89 boasts three distinct event spaces designed to cater to



various occasions with its combination of elegance, versatility, and a high level of service.

Embrace our celebratory events this Christmas and New Year’s Eve, or host a private or corporate event, as it is truly an experience above all else! For more information or to book, visit [eureka89.com.au](http://eureka89.com.au) ●



## FEDERAL MP

# Six months in: representing Melbourne in our national parliament

It’s been just over six months since I was elected to represent our wonderful community in the Australian Parliament; and what a six months it’s been.

**WORDS BY**  
SARAH WITTY MP, FEDERAL MEMBER FOR MELBOURNE



When I first walked into Parliament House as the new Member for Melbourne, I carried with me the hopes, frustrations and determination of our city. Melbourne is a place that pulses with creativity, compassion and ambition. It’s a city that knows what it stands for – fairness, opportunity, and looking out for one another.

Representing those values in Canberra is one of the greatest honours of my life.

From day one, I’ve focused on listening to residents, community leaders, small business owners, students, and local organisations, about what really matters. Housing affordability, climate action, the cost of living, and the future of work are at the top of that list. These aren’t abstract policy debates; they’re the realities shaping the daily lives of people in every corner of our city.

One of the first things I did as your representative was to push for stronger national action on housing. Too many Melburnians are being priced out of the communities they love. I’ve worked closely with the Housing Minister to make sure our voices are heard as the federal government rolls out new investments in social and affordable housing, including through the Housing Australia Future Fund, which will help

deliver thousands of new homes across Victoria.

We’ve also taken major steps forward on renewable energy and sustainability, areas where Melbourne leads the way. In Parliament, I’ve spoken about the incredible work happening locally: from start-ups driving clean technology innovation, to community groups helping households make the switch from gas. Our city has the ideas, the talent, and the urgency to help Australia meet its climate commitments and create good, secure jobs in the process.

It’s also been inspiring to see the way Melburnians step up for one another in tough times. Whether it’s volunteers at Second Bite and OzHarvest rescuing good food to feed families in need, or advocates working to support international students, or neighbourhood houses providing a safe space for connection – our community spirit is second to none.

I’ve made it a priority to champion those efforts in Canberra. Just recently, I met with social enterprises like Jigsaw, which is creating meaningful employment pathways for people with disability, and community-led organisations tackling homelessness and food insecurity. These are the people who

show what “building our future together” really looks like.

Of course, there’s much more work to do. The cost of living continues to stretch household budgets. That’s why the Albanese Government’s new tax cuts, which will start flowing to all taxpayers from July, are designed to give genuine relief to low- and middle-income earners. At the same time, we’re delivering cheaper medicines, expanding Medicare urgent care clinics, and providing energy bill relief to millions of households.

On the local front, I’ve been working with schools, sports clubs and community groups to make sure Melbourne gets its fair share of investment. We’ve secured funding to improve local sporting facilities and community hubs, and I’m working with local councils to identify more projects that can make a real difference, from safer streets to greener spaces.

More recently, the announcement of Cohealth closures in Fitzroy and Collingwood has emerged as a major issue of concern for our community. Since news of the closures came to light, I have met with Cohealth and other community health providers to get a better understanding of

how Cohealth became unviable. I am also in discussions with the Health Minister, the Health Department, the state government and Yarra Council to work out a way forward for the thousands of patients who have grave concerns about the closure.

As I look back on my first six months, I feel proud – but mostly, I feel grateful. Grateful to the people of Melbourne for placing your trust in me. Grateful for the many community members who have shared their ideas and concerns. And grateful for the chance to stand up every day for the place we all call home.

The next few years will bring challenges, no doubt about it. But they will also bring enormous opportunity. Together, we can shape a fairer, more sustainable, more inclusive future for Melbourne and for Australia.

Thank you for the privilege of serving you. My door is always open; whether it’s to raise a local issue, share an idea, or simply have a chat about what’s happening in our city.

Because representing Melbourne isn’t just about what happens in Parliament House, it’s about listening, learning, and working every day to build the future we believe in, together. ●





# Boat Show success

The 63rd Melbourne Boat Show has been hailed a success after it concluded on Sunday, October 19 at Docklands.

Organisers, exhibitors and visitors were all highly complimentary of the event, which saw close to 39,000 people in attendance, celebrating all things boats and boating lifestyle.

Boating Industry Association of Victoria (BIAV) CEO Steve Walker said, "Exhibitors put on an amazing display over the full four days. We were really pleased and proud." ●



# Heritage fleet in dire straits as groups issue desperate plea to Premier

Docklands' embattled heritage fleet has issued a desperate plea to Premier Jacinta Allan, warning that Victoria's most significant historic ships face eviction within months and risk being left without a home.

WORDS BY SEAN CAR



In a joint letter dated October 6, the custodians of the *Alma Doepel*, *Enterprise* and steam tug *Wattle* urged the Premier to "intervene immediately" to secure a permanent, fit-for-purpose base

for the fleet, which they say is now "at risk of being left without a safe or operationally viable home".

"Without a secure, fit-for-purpose base that offers basic berthing, access, and operational safety, we cannot continue," the groups wrote. "This situation threatens not just the future of these historic assets, but the important youth development, community, education, and public engagement programs they enable."

The plea follows more than a year of stalled negotiations with Development Victoria (DV), which plans to reclaim the fleet's North Wharf site by January 2026. While DV has offered the operators a combined \$90,000 to vacate, heritage advocates have condemned the move as a "pay-off" that does nothing to address long-term solutions.

The letter, signed by *Alma Doepel* chair Matt McDonald, *Enterprise* chair Scott Chapman and *Wattle* chair Peter McIvor, calls on the government to fund necessary works for relocation and commit to establishing a maritime heritage precinct. "These vessels are restored or in restoration, operational or nearing operational status, and ready to serve the people of Victoria," it states.

The *Alma Doepel*, undergoing restoration in Docklands for 16 years, remains determined to stay, though its prospects look increasingly grim. Its restoration has drawn more than \$5 million in community and philanthropic investment, but without government intervention, the ship faces the prospect of being forced out to Williamstown's Seaworks precinct – an option operators say is

financially unsustainable.

The *Wattle*, still under restoration, has reportedly been "rescued" and is now expected to permanently relocate from Docklands, while the *Enterprise* – a working replica of John Pascoe Fawcner's 1835 schooner – is also considering its future.

In last month's *Docklands News*, Mr McDonald questioned why DV was willing to spend tens of thousands of dollars "just to get rid of us quietly" instead of investing that money into a temporary berth at NewQuay. "That would keep the fleet together, in Docklands, and serving the community," he said.

The groups gave the government 14 days to respond or risk a public campaign. "This is not a step we take lightly," the letter states, "but one we feel is now



necessary to protect Victoria's living maritime heritage."

**Day of action to "save our ships"**

The heritage fleet is calling on Docklanders and Melburnians to join an on water and on land protest on Sunday, December 7.

The event will include a range of activities, and organisers say "the message will be clear and it will be NOISY". For more information: [billreid@almadoepel.com.au](mailto:billreid@almadoepel.com.au) ●

## DENTIST

**docklands DENTAL STUDIO**  
a different dental experience

**BOOK NOW ONLINE**  
[docklandsdentalstudio.com.au](http://docklandsdentalstudio.com.au)

**ACCREDITED**

**Now Accepting zip Money**  
a better way to pay

**Zoom! Teeth Whitening**  
Now Available

**Start from just \$12 a day**

**Our Dentists:**

**Dr Pia Oparkcharoen**  
**Dr Amanda Wong**

**Dr Jie Chen**  
**Dr Cindy Liang**

**Services:**  
Check-ups (exam, scale and clean, X-Ray); children's dentistry; teeth whitening; dental implants; root canal treatment; crown, bridge, veneer; dentures.

Mon-Fri 8:30-5pm (Thurs until 6pm) Sat: 9am-1pm  
57 Merchant St, Docklands (opposite Victoria Harbour Medical Centre)  
[www.docklandsdentalstudio.com.au](http://www.docklandsdentalstudio.com.au) – ph 9021 9487 mob 0488 799 487

## DOCKLANDS NEWS

# Subscribe to our email for the latest news

Delivered monthly to your inbox

Scan the QR code to sign up



# Some boats are “special”

Sadly, for Victoria Harbour and Docklands community there threatens to be yet another loss of significant maritime heritage.

Melbourne Maritime Heritage Network (MMHN) is grateful to the master of steam tug *Wattle* captain Rob Anderson for alerting us to this fascinating maritime tale about the “rescue” of a very “special” small wooden boat was facing destruction in 2025 at the end of long, wide-ranging career on Victorian waters – Metung, Williamstown, Sorrento, Gabo Island, The Heads, Port Phillip Bay, Victoria Harbour and, hopefully back again to the Gippsland Lakes.

Although circumstances remain unclear, the tale commences with a small wooden row boat located at Sorrento being donated to serve as life-boat on *ST Wattle* based in Victoria Harbour. Note that the official name of the *Wattle* Restoration project is Bay Steamers Maritime Museum Ltd (BSMM) – the “museum” being heritage vessel *Wattle*. Under its own steam the *Wattle* sailed down to Sorrento, anchored while the small boat was rowed out and hauled aboard. The *Wattle* then steamed back to Victoria Harbour.

Too heavy for lifeboat purposes, it remained stowed onboard *Wattle* for some time (see image) before being hauled off onto North Wharf where *Wattle* volunteers, recognising its “special” design features, worked on restoring the boat (see picture).

Perhaps restoration work priorities changed, work on the boat paused and it was stored out of the way gathering dust in No.2 Work Shed. Work on the *Wattle* progressed, the “special” small boat deteriorated.



### Fast forward to 2025 ...

The Heritage Fleet faces eviction from North Wharf. *Wattle* volunteers faced hard decisions about where to relocate the vessel and where to store essential restoration materials and equipment. And – although not suitable for use on the *Wattle*, what to do about a clearly “special” small wooden boat? Options were limited but surely the rubbish tip was simply “NOT ON”!

For those who “know boats”, this boat had features indicating that it was clearly “special”, not only in its design, but also its purpose. Maritime restorations take a very long time. *Wattle* volunteers who may once have had first-hand knowledge the boat and its journey to North Wharf, were no longer at hand.

Rob Anderson was intrigued by the “special” design features and the questions which arose:

It was very heavily built, double-ended, had four oars as well as a rudder. A small dinghy doesn’t need four oars as well as a rudder?



There were filler pieces between the clinker strakes. This creates a smooth, planked external finish. Could this also indicate that perhaps it was made smooth to be able to be hauled up the side of a ship?

A very unusual feature on this boat was that it was double ended (i.e. no stern back-board). This improves buoyancy and floatation so the risk of a wave lifting up stern, causing the bow to tile downward. What boats needed such features is reduced? Was this designed for use in choppy waters?

### Who would know more?

Rob was aware that Bulls brothers of Metung, had been building boats since 1912 with a reputation for building “specialist” ships for ports and harbours. Rob wondered whether this boat was the Bulls’ “special build” for the famous vessel *The Rip*. Perhaps it was purpose-built to specifically transport explosives necessary to blow-up rock pinnacles around the entrance to the Bay at Port Phillip Heads. In those days, explosives were highly volatile and risky to carry aboard *The Rip* workboat powered by internal combustion engines.

To reduce the risk a “special” heavy wooden rowboat, designed to carry explosives, was towed at a safe distance behind *The Rip*. Its “special” design features

aligned with it being towed. A rudder would reduce drag, and its smooth planking would be easier when hauled aboard once the job was done? All the speculation at this point seemed to make sense.

Rob contacted Kim Bull, grandson of one of the earlier Bulls brothers. Rob admits that as to the purpose: “turns out I was totally wrong!”. This small boat did not serve *The Rip* at all (more of that at another time).

Kim Bull checked his detailed records and another fascinating purpose was revealed: “we can advise the following information was taken from the Bulls Boat List – Boat No. 228 – Gabo Island Lighthouse 12’ life-boat clinker double-ender.”

Could this be that vessel? Further anecdotal evidence emerged some years ago, Kim’s grandfather actually visited the *Wattle* and recognised the small boat was Bulls-built.

Good news for Rob and the *Wattle* Restoration Group, Kim Bull continued: “Bulls’ would be very interested in saving the boat”. Great relief that this “special” boat will be “rescued” by Bulls and will be heading back to where it started its “career”.

Kim Bull plans to collect the boat from North Wharf later in the year. Its future? Options are under consideration – display at the forthcoming Gippsland Lakes Wooden Boat Festival (Paynesville) or in the longer term a return to Gabo Island. ●

### Jackie Watts

CHAIR  
INFO@MMHN.ORG.AU



## HEALTH & WELLBEING

# The hidden cost of sitting: How to protect your spine and boost your wellbeing

In today’s tech-driven world, most of us spend far more time sitting than our bodies were ever designed for. Whether at the office, in the car, or relaxing at home, prolonged sitting has quietly become one of the biggest threats to our overall health.

At Docklands Health, we see the effects every day – stiff necks, aching backs, chronic fatigue, and headaches. But the good news is that with awareness and consistent action, you can protect your spine, improve posture, and boost your wellbeing.

### Why sitting is the new smoking

Research increasingly shows that sitting for long periods can be as harmful to your health as smoking. It slows metabolism, reduces circulation, and places excessive pressure on your spine. Over time, this can cause:

- Neck and back pain from poor posture.
- Tight hip flexors and weak glutes, leading to imbalance.
- Increased risk of metabolic disease and reduced fitness.
- Lower energy and focus due to reduced oxygen flow.

Even regular exercisers aren’t immune – an hour at the gym can’t offset eight hours at a desk. The key is to move regularly throughout the day.

## 5 WAYS TO MOVE MORE DAILY

**1. TAKE THE STAIRS**  
Skip the elevator, even for a floor.

**2. BIKE OR WALK**  
For short trips, leave an car.

**3. STAND & STRETCH**  
Every hour, move your body

**4. WALK & TALK**  
Pace during calls or meetings.

**5. DANCE BREAK**  
Put on music, just for fun!

### How sitting affects your spine

When you sit, especially while slouched, the natural curves of your spine flatten. The lower back bears extra load while the core and glutes switch off. Over time, this imbalance causes stiffness, tightness, and even changes in spinal alignment.

Many people’s back or neck pain isn’t from one event but the slow strain of poor posture over months or years.

### Small changes, big impact

It doesn’t take drastic changes to reverse the effects of sitting:

**Break up sitting time:** Stand and move every 30 to 45 minutes. A quick walk or stretch relieves tension and boosts circulation.

**Set up your desk:** Keep your screen at eye level, feet flat, and hips and knees at 90 degrees. Alternate between sitting and standing if possible.

**Engage your core:** Lightly brace your abdominal muscles while sitting to support your spine.

**Stretch regularly:** Focus on tight areas such as the hips, chest, and shoulders.

**Move with purpose:** Outside of work, choose activities like walking, yoga, or swimming to build strength and flexibility.

**Chiropractic care and posture support** Sometimes, the effects of sitting go beyond what self-care can fix. At Docklands Health, our chiropractors assess your spine to identify restriction, imbalance, or tension.

Through gentle adjustments, soft tissue therapy, and tailored exercises, we help restore healthy movement patterns and long-term spinal health.

### Your spine is designed to move

The spine thrives on movement – each joint and muscle relies on motion to stay strong and nourished. Sitting for too long starves it of that essential movement.

If you spend most of your day seated, take it as a sign to check in with your body. Small, consistent changes can transform your spinal health, energy, and mood.

At Docklands Health, we’re here to help you move better, feel better, and live healthier – one adjustment and one movement at a time. ●

Sit Right video:



### Dr Mike Edgley

CHIROPRACTOR  
DOCKLANDS HEALTH





# Free coffee, conversations, and the future of Docklands

As Community3008 Inc. marks its first anniversary, we're inviting everyone in Docklands to come together over coffee and conversation to help shape the future of our neighbourhood.

WORDS BY  
JAMAL HAKIM

Over the next three Saturdays, Community3008 will host a series of free community coffee meetups across Docklands. This will be a relaxed way for residents and local business owners to connect, share ideas, and talk about what they'd like to see from the organisation in its second year. Everyone who attends will also receive a free Community3008 membership for their first year, giving access to upcoming events, community news, and some exciting things launching in 2026.

The meetups will take place at three much-loved local cafés:

- Saturday, November 8 at D.G. Espresso, 63 Merchant St

- Saturday, November 15 at Shall We Coffee, The Marketplace, The District Docklands
- Saturday, November 22 at 18 Pence Lane, 82 River Esplanade

These gatherings are all about listening to the voices of our community – from residents and families to small business owners who make Docklands what it is. We want to hear directly from the community about what matters most: from neighbourhood activation and local events to safety, dog parks, greening, and improving the experience of living and working here.

## Looking ahead: Community3008 AGM and celebration

The month will culminate with the Community3008 Inc. annual general meeting (AGM) on Wednesday, November 26, to be held aboard the Magic Charters ferry, a fitting venue to celebrate our waterfront community and everything we've achieved together in our first year.

The AGM will be an open and inclusive event, members and non-members are welcome to attend. Members will have voting rights, and anyone who isn't yet a member can join for free on the day. The meeting will include the election of the new Community3008 Inc. committee, presentation of our second-year plan, and an evening of celebration with free food and

entertainment for everyone to enjoy.

A highlight of the evening will be our panel discussion, "What Does the Future Hold for Docklands?", featuring some special guests including a representative from Development Victoria. The panel will explore how Docklands can continue to grow into a vibrant, safe, and connected community while preserving its unique waterfront character. The City of Melbourne will also be providing an update.

## The power of representation

Community3008 was created because local representation matters. When residents and small businesses have a seat at the table, decisions are better, outcomes are fairer, and our community becomes stronger.

Our first year has shown the difference that grassroots leadership can make, from advocating for better public spaces and facilities, to supporting local traders, to ensuring every voice is heard in shaping the future of our precincts.

As a Community3008 representative, I've also recently met with Victoria Police to discuss local safety concerns raised by residents. It's clear that safety remains a top priority for our community, and I'll be providing a full update on this discussion including steps being taken to improve coordination and visibility at the AGM.



## Join the conversation

Community3008 is a not-for-profit association led by Docklands community members. We exist to build a stronger, more connected, and more representative community, one that truly reflects the people who live, work, and invest here.

Join us for a coffee this November, share your ideas, and be part of shaping the next chapter for Docklands. Then, come celebrate with us at our AGM on November 26, aboard the Magic Charters ferry, where we'll look back on a successful first year, look ahead to the next, and celebrate the people who make Docklands home.

For more information, visit [community3008.org.au](http://community3008.org.au) and make sure to RSVP to the AGM. ●

## OWNERS' CORPORATION LAW

# Don't expect the government to rescue OCs in the next legislative review

All stakeholder feedback and public consultation has now been completed, and the Expert Panel appointed by the Victorian Government to oversee a review of the *Owners Corporations and Other Acts Amendment Act 2021* is due to table their report to Parliament by December 1.

However, the terms of reference for the Expert Panel's report were unduly constrained, and so the report tabled runs the risk of not being able to consider amendments and reforms for owners' corporations (OCs) that are in dire need of being passed right now.

VCAT released a decision in July in relation to a power struggle between two OCs in Docklands.

The ruling determined that OCs are required to obtain a special resolution from its members before filing any legal proceedings for non-monetary actions. This includes actions against owners and occupiers for causing nuisance or having loud parties, excessive noise, unrestrained dogs, misuse of visitor parks, pursuing an owner for unlawful short-stay accommodation (AirBnB) activities, compelling repairs, or bringing actions to terminate a manager or building manager.

To obtain a special resolution or interim special resolution, an OC would need at least 51 per cent of the total owners in the building to vote in favour of the action.

It was previously understood that the committee had the power to file these types of proceedings in order to keep proper order and governance of the buildings they preside over.

The only way to fix this situation is for the *Owners Corporations Act* to be amended.

The panel was required to examine and make recommendations in relation to:

- Whether the governance and related reforms to the Act made by the Amendment Act are meeting their objectives.
- Whether the amendments made to the Act by the Short-Stay Act are meeting their objectives.
- The need for any specific arrangements under the Act for lot owners who experience difficulty paying their OC fees due to financial hardship, and how such arrangements could be balanced against the interests of other lot owners.
- Whether the existing arrangements in the Act to promote the probity and ethical conduct of OC managers are sufficient to protect the interests of lot owners.
- Whether existing measures in the Act to address non-compliance committed by OC managers, lot owners, residents, and others with duties under the Act are sufficiently robust.
- What is the most appropriate model for collective sales under Part 5 of the *Subdivision Act 1988* including examining reforms to the current threshold and what safeguards should be provided to protect lot owners who do not wish to sell.
- Whether existing voting processes in OCs are clear, effective, and fair for all lot owners.

None of these terms of reference would therefore give the Panel the power to recommend Parliament to fix the issue identified in the VCAT decision. ●

## Tom Bacon

STRATA TITLE LAWYERS

[TOM@STRATATITLELAWYERS.COM.AU](mailto:TOM@STRATATITLELAWYERS.COM.AU)



## DOCKLANDS REPRESENTATIVE GROUP

# October: the month of strata conferences

October could well be dubbed "Strata Conference Month", with all corners of the sector hosting their own gatherings.

Early in the month, SCA (Vic) – an organisation supporting OC managers – held its annual Victorian Symposium, a two-day event at Marvel Stadium, supported by major insurance sponsors, CHU and Whitbread. Later in the month, the Real Estate Institute of Victoria (REIV) hosted its Owners' Corporation Conference, which included a session with the Expert Panel reviewing the *Owners' Corporations Act 2006*.

Both events were slick and professionally run – but one couldn't help noticing that the lived-experience voice of strata residents was largely absent. The conversations were about – not by – the people who actually live in strata.

That's where the Owners Corporation Network (OCN) National Strata Conference comes in. This event is designed for owners and residents – the people who pay the levies, sit on committees, and live with the outcomes.

Its sessions tackled issues that truly hit (our) home: building defects, EV-charging provisions, insurance affordability, and how communities can work together for fairer, more transparent governance.

It's long overdue to see a spotlight on this side of strata life. Owners' corporations have too often been the quiet end of the housing sector, even as more and more Victorians make their homes in apartments and townhouses.

The one downside for us?

The OCN conference is held in NSW – largely because that state has paid much greater attention to residential strata.



However, with the Victorian Government now earmarking Activity Centres – areas around train stations, tram lines, and major transport hubs – for significant residential growth, strata living is no longer a niche concern. It's becoming central to how our city will function.

Add to that the current review of the *Owners Corporations Act* – with the formal process well under way and reforms on the horizon – and it's clear this once-overlooked sector can no longer be filed under "too hard."

As for OCN, its growing national presence suggests that owners and residents across Australia are finally being heard. And who knows – as the organisation expands, perhaps next year's national conference will head south to Victoria. After all, we've got plenty of strata stories to tell – and plenty still to fix.

Subscribe to OCN: [ocn.org.au](http://ocn.org.au) ●

## Janette Corcoran

MEMBER

[JCORCORAN@DOCKLANDS.ORG.AU](mailto:JCORCORAN@DOCKLANDS.ORG.AU)





Quiz



1. What is the proposed name of the light installation that will mark the ‘ghost footprint’ of Docklands’ demolished Central Pier?
2. What type of chestnut can be used as an eco-friendly detergent?
3. How much money in total did Development Victoria offer the three heritage fleet vessels to vacate North Wharf?
4. Netflix’s *Stranger Things* debuted in what year?
5. Where did the Docklands Farmers Market move its monthly event to in September?
6. How many cygnets hatched on the floating wetlands near the Library at the Dock in September?
7. *Phascolarctos cinereus* is the scientific name for which Australian animal?
8. Nestlé’s Milky Bar Kid is usually dressed as what type of character?
9. Sandi Toksvig (pictured) hosted which British competition show from 2017 to 2020?
10. What has the state government abandoned in its latest Fishermans Bend transport plan?
11. Maithili is a language spoken in which two countries?
12. What did Tasmanian couple Dan Bush and Grace Saffin launch at NewQuay in Docklands last month?

QUIZ SOLUTIONS

1. *Echo 2*. Conker/horse chestnut  
3. \$90,000 4. 2016 5. Marvel Stadium, at Gate 6, Five 7. Koala 8. Cowboy 9. *The Great British Bake Off* 10. A tram bridge over the Yarra River between Docklands and Fishermans Bend 11. India and Nepal 12. Sauna Boat Melbourne

5x5

No. 318

Insert the missing letters to make 10 words – five reading across the grid and five reading down.

R		K		S
	R		D	
A		A		N
	U		T	
T		A		E

SOLUTIONS

RAKES, ERODE, AGAIN, CULTS, TEASE

PUZZLES AND PAGINATION  
©PAGEMASTERS PTY LTD  
PAGEMASTERS.COM November, 2025

Sudoku

No. 053

Fill in the blank cells using the numbers from 1 to 9. Each number can only appear once in each row, column and 3x3 block

EASY

5					6		4	9
	3							
		9	5	8	2	3		
	7	5		2	9			
	2			6			5	
			7	5		6	2	
		2	9	1	5	8		
							1	
3	6		2					4

HARD

6			4	8				5
3					5		8	9
2								
				2	9	3		
	8						4	
		9	7	4				
								1
8	7		5					2
1				9	4			3

SOLUTIONS

EASY

4	6	9	8	7	2	1	9	3
2	1	7	4	9	8	5	6	
8	9	8	1	5	6	2	7	4
8	2	9	4	5	7	8	6	1
7	5	6	1	9	3	8	2	8
1	8	4	6	2	8	5	7	9
9	7	7	8	3	8	6	1	4
5	8	3	2	8	6	4	9	7
6	2	4	9	3	1	5	8	7

HARD

8	7	8	4	7	6	2	5	9	1
2	7	6	4	1	9	5	3	8	7
1	9	5	8	7	3	8	2	2	6
8	2	1	1	9	4	7	6	8	5
9	7	6	3	5	2	2	7	8	2
7	5	7	8	6	7	8	9	1	4
4	1	9	7	8	3	6	8	5	2
6	8	2	5	7	9	1	3	4	7
5	3	7	2	2	7	4	1	6	9

Wordfind

Theme: Space exploration

The leftover letters will spell out a secret message.

G	N	I	R	A	G	A	G	S	S	E
N	T	U	A	N	O	R	T	S	A	X
O	A	P	E	N	A	A	E	P	T	P
R	S	A	O	V	T	L	S	A	E	L
T	M	O	I	I	T	E	H	C	L	O
S	M	T	O	H	L	O	U	E	L	R
M	Y	N	G	U	N	G	T	C	I	A
R	T	I	S	H	E	N	T	R	T	T
A	E	P	S	T	A	A	L	A	E	I
W	A	Z	U	Y	O	S	E	F	R	O
C	O	S	M	O	N	A	U	T	S	N

ARMSTRONG

NASA

ASTRONAUT

SATELLITE

CAPSULE

SHUTTLE

COSMONAUT

SOYUZ

EXPLORATION

SPACECRAFT

GAGARIN

STATION

GRAVITY

WEIGHTLESS

MOON

Secret message: Apes among the stars

Crossword

No. 053

ACROSS

- 1 Small amounts (5)
- 4 Superfluous (9)
- 9 Proceedings of meeting (7)
- 10 Elementary particle (7)
- 11 Not artificial (7)
- 12 Settle (7)
- 13 Mediterranean islander (9)
- 15 Agreement (4)
- 17 Small island (4)
- 19 Tending to plants (9)
- 22 Corrected (7)
- 25 Radio broadcaster’s accessory, often (7)
- 26 First (7)
- 27 In the midst of (7)
- 28 Provider of information (9)
- 29 Lecher (5)

DOWN

- 1 Philander (8)
- 2 Upper house politician (7)
- 3 Gloomy (9)
- 4 Ending in (9)
- 5 Giver (5)
- 6 Naming words (5)
- 7 Type of acid (7)
- 8 Dig (6)
- 14 Compass direction (9)
- 15 Animals that prey on others (9)

- 16 Firebrand (8)
- 18 Local law enforcer (7)
- 20 Visible (2,5)
- 21 Polynesian island (6)
- 23 Less wet (5)
- 24 Land near river’s mouth (5)

SOLUTION

R	A	I	V	S	I	N	V	M	R	O	F	N	T
O	H	R	S	A	B	E	F						
I	S	N	O	W				R	W	I	L	I	N
V	I	E	B	E	M	Y	H						
I	S	O	V	E	R			G	E	O	N	E	W
I	N	G	I										
G	N	I	N	E	G	R	V						
V	L	O	V	D				N	V	I	N	I	G
I	T												
E	A	T	O	S	E	H		T	V	R	N	I	L
N	A	N	O					N					
N	O	B	I	L	E			S	E	L	L	I	N
N	O												
E	N	V	O	N	E	R							
E	N	V	O	N	E	R							

Codeword

No. 053

16	19	12	24	D		2	23	10	6	11	3	20
10			24		3		23		16		10	19
13	24	18	3		22	4	8		22	C	13	19
15		3					15		2		24	8
19	D			12	15		23	10	5	22	16	22
21					23		6		23		24	
22	6	11	2	8	10		2	22	15	19	7	22
			10		13		D		13			2
16	24	9	15	19	21	22		6	19	14	10	2
24		19			C		22			10		19
22	9	9	3	24		6	19	2	17	24	20	15
5		1		9		22		10		9		24
20	22	19	5	22	22	D		10	12	15	24	C

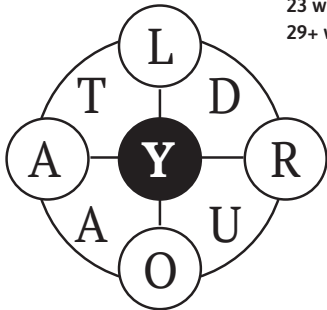
SOLUTIONS

C	D	I	H	E	G	S	A	V	O	X	L	J
92	52	92	52	22	12	02	61	81	21	91	51	91
T	L	B	I	N	O	B	K	Y	M	F	U	Z
51	21	11	01	01	6	8	7	9	5	8	5	7

9-Letter

No. 053

Using the nine letters in the grid, how many words of four letters or more can you list? The centre letter must be included and each letter may only be used once. No colloquial or foreign words. No capitalised nouns, apostrophes or plural nouns ending in ‘s’.



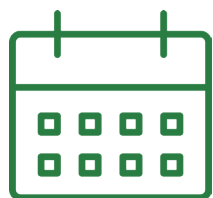
Reference: Macquarie Dictionary

SOLUTIONS

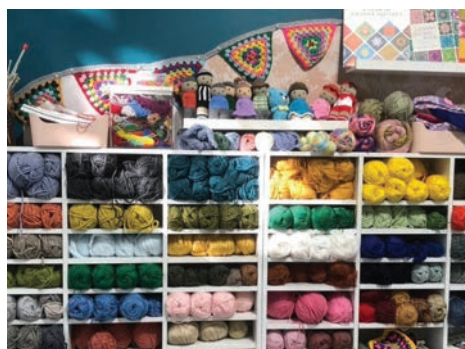
ADULTORY, ady’ra, arty, dry’l, diary, dory, dourly, dray, duty, lady, LAUDATORY, layout, lory, orly, outlay, royal, royot, tardy, tayra, today, today, today, truly, tyro, yard, your, yurt



## WHAT'S ON November



From movies to markets and exhibitions, you'll find something to float your boat this November in Docklands.



### COMMUNITY SOCIAL CRAFTING

The Cauldron hosts weekly social crafting sessions – informal meetups to connect, share skills, and work on personal hand-craft projects. Gold coin donation appreciated. All welcome.

The Cauldron, The District Docklands

WEDS UNTIL 26 NOVEMBER, 5PM – 7PM



### MINDFUL MIDWEEK FLOW WITH ABBIE PRICE

Unwind midweek with a calming Wednesday evening free yoga session designed to restore balance and release tension, with Abbie Price.

1 Hotel Melbourne, Docklands

WEDNESDAY 26 NOVEMBER, 6PM – 7PM

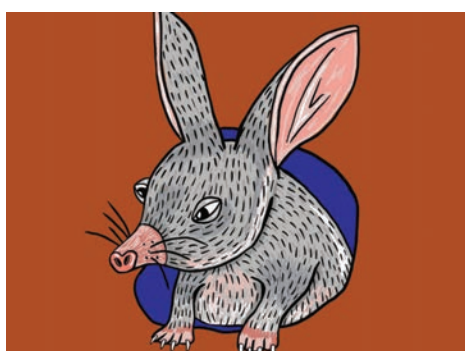


### JO RYAN: LETTR4MS

Sculptures made from discarded signage intertwine letters, transforming language into art that reimagines our typographic world and highlights everyday communication.

Library at The Dock, Docklands

UNTIL 23 NOVEMBER, 10AM – 7PM

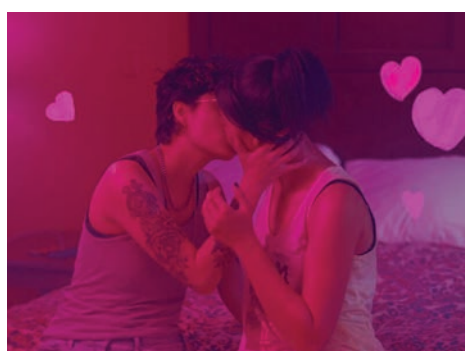


### DEEPER MELBOURNE WALKING TOURS

Explore modern Melbourne's origins and First Peoples' heritage on a 90-minute inclusive walking tour from Southern Cross to Flinders Street, blending history, culture, and reflection.

Southern Cross Train Station, Docklands

29 NOVEMBER – 25 FEBRUARY



### EGGHEAD AND TWINKIE SCREENING

Teen animator Twinkie and best friend Egghead take a vibrant, hilarious road trip, exploring identity, friendship, and self-acceptance in a heartfelt, animation-filled coming-of-age adventure.

Library at The Dock, Docklands

FRIDAY 7 NOVEMBER, 7PM – 8.30PM



### BOURNE LOCAL MARKET

Discover the Bourne Local Market at Collins Square, featuring curated local stalls with handmade crafts and artisanal treasures – perfect for a lunchtime shopping escape.

Collins Square, Docklands

UNTIL 11 DECEMBER, 10AM – 2PM



### SEA SHANTIES AND FOLK SONGS

Join a free, welcoming Thursday singalong at Mission to Seafarers – no experience needed! Enjoy shanties, folk, and drinking songs with lively company and bar-side courage.

The Mission to Seafarers Victoria

UNTIL 18 DECEMBER, 7PM – 10PM

## Business Directory

### ACCOUNTING

**rubiiix**  
business accountants

Maximising your profits by  
minimising your tax

PH 9603 0066  
www.rubiiixbusinessaccountants.com.au

### HEALTH & BEAUTY

**DOCKLANDS HEALTH**

**SERVICES:**

- Physiotherapy
- Massage
- Psychology
- Chiropractic
- Pilates
- Podiatry

**HOURS**  
Mon-Fri 8am-7pm | Sat 8am-12pm

4/860 Collins St, Docklands, 3008  
(03) 9088 3228 www.docklandshealth.com.au

### DENTAL

**docklands DENTAL STUDIO**  
a different dental experience

**NOW OPEN SATURDAYS**  
Mon-Fri 8:30-5pm  
(Tue, Thu until 6pm)  
Sat: 8:30-1pm

57 Merchant St, Docklands  
T (03) 9021 9487 | mob 0488 799 487  
(opposite Victoria Harbour Medical Centre)  
www.docklandsdentalstudio.com.au

### LEGAL ADVICE

**Rothwell Lawyers**

Suite 1516, 401 Docklands Drive,  
DOCKLANDS VIC 3008  
Tel: (03) 9328 3500  
Mob: 0447 448 779  
W: www.rothlaw.com.au

At Rothwell Lawyers we deliver exceptional legal advice, and always focus on achieving the best outcome for our clients.

**AREAS OF PRACTICE**

- Business Structuring
- Commercial Law Issues
- Conveyancing
- Debt Recovery and Alternative Dispute Resolution
- Family Law
- Insolvency Advice
- IVOs
- Wills, Estates and Probate

### TREE SERVICES

**DAWSONS TREE SERVICES**

A family business with over 40 years experience

- Large Tree Specialists
- Hedge Trimming Experts
- Stump Grinding
- Mulch Available
- FREE Quotes
- Consulting Arborist

**From \$100**

**\$20 million insurance**

• No Fuss • No Mess • No Stress

☎ **9720 5111**

VISA e mpia MasterCard

www.victoriaharbourmedicalcentre.com.au

**VICTORIA HARBOUR MEDICAL CENTRE**

Victoria Harbour Medical Centre  
2-3/850 Collins Street Docklands 3008  
Entry via Merchant St  
Hours: Mon-Fri 8am-6pm, Sat 9am-12 noon

Telephone 9629 1414  
After Hours 13 74 25  
Fax 9629 4265

### PHARMACY

**victoria harbour pharmacy+news**

Hours: Mon to Fri 8am-8pm & Sat 9am-1pm

- Pharmacy
- Giftware
- Magazines & Papers
- Tatts/lotto
- Same day dry cleaning

66 Merchant St, Docklands (opposite Safeway)  
Ph: 03 9629 9922 Fax: 03 9629 9933  
Email: vicharbourpharmacy@ninet.com.au

**LUCAS**

WE KNOW VERTICAL LIVING  
BETTER THAN ANYONE.  
THAT'S YOUR ADVANTAGE.

9091 1400 | lucasre.com.au

### SIGN WRITER

Retail  
Office  
Exhibition  
Vehicle wrap  
Reception sign  
Illuminated sign  
Lightbox sign  
Business card  
Pull up banner

**cm OH MY SIGN**  
Your local sign solution

www.ohmysign.com.au  
Chris 0411 581 166  
info@ohmysign.com.au  
1017/ 401 Docklands Drive, Docklands

### ESCORTS

**THE MOST EXCLUSIVE ESCORT AGENCY**

**Paramour**  
OF COLLINS STREET

CITY CENTRE  
Melbourne's exclusive entertainment service.  
Highly recommended for our interstate and overseas visitors

- Dinner Companions
- Social Escorts
- Sensual Ladies

Scan QR code for pictures of ladies

**TEXT: 0477 291 058**  
**(03) 9654 6011**

GD - 5 MINUTES TO YOUR DOOR  
たくさん美しい女性 日本語を話します  
We have survived COVID-19 AND ARE STILL HERE TO HAVE BEAUTIFUL LADIES PRIVATELY TO YOUR DOOR 24/7



# LUCAS

## ELEVATE YOUR PROPERTY MANAGEMENT

make the switch to lucas and see how  
elevated service brings you better return  
on your investment.

9091 1400 | [lucasre.com.au](https://lucasre.com.au)

