

DOCKLANDS NEWS

docklandsnews.com.au

Forever Free

Puzzles & Trivia P26



Gone fishin'!
Photo by Ajay Viswanath

Off the back of the success of its Wednesday fishing sessions, Docklands Neighbourhood House has now launched weekend sessions for locals keen on throwing a line into Victoria Harbour. *Full story on page 5.*

Docklands central to new festival

The City of Melbourne has revealed a new major 17-day festival running from August 17 to September 2, 2023, with Docklands expected to play a central role.

WORDS BY *Sean Car*
EVENTS

Now or Never – a festival exploring the intersection of arts, ideas, sound, and technology taking over the city's streets and venues – is expected to attract crowds of more than 200,000 people when it kicks off in August this year.

The council said the “uniquely Melbourne” festival would combine the success and resources of Melbourne Music Week and Melbourne Knowledge Week to create

an “unmissable cutting-edge” experience to “discover, learn and play”.

The program will see a range of free and ticketed daytime and night-time events featuring immersive “digital experiences, adventurous performances, stirring discourse and more”, through a mix of local and international musicians, artists, and innovators.

And, while further program details are expected to be announced later this month, with the full program to be released in late June, *Docklands News* understands the precinct surrounding Victoria Harbour will play a major role in hosting a major event as part of the festival.

The news represents another boost for local businesses, with *Now or Never* adding to Docklands' growing events calendar, which already includes Firelight Festival, the Melbourne Boat Show, and a string of other new activations soon to be announced.

Continued on page 2.

Locals left out of planning for revived Stadium precinct

The AFL has not consulted with Docklands locals on the future of the revamped Marvel Stadium precinct, despite earlier promises to do so.

WORDS BY *David Schout*
PLANNING

As the \$225 stadium redevelopment nears completion, it has emerged the league submitted an “activation strategy” to the City of Melbourne without input from Docklands Representative Group (DRG), nor residents within the stadium precinct.

The failure to consult with the community is at odds with the AFL's commitment to improve the community and “everyday” mode of the stadium precinct.

Throughout the redevelopment, it has reiterated the importance of Docklanders to the future success of the stadium surrounds.

AFL property development general manager Matthew Chun told the Docklands Summit in September 2022: “We're trying to make the stadium an asset that everyone can use so it's a community asset. We see it as a community asset, and we want everyone to enjoy it, not just on event days,” he said.

Months prior, in June 2022, a representative confirmed with *Docklands News* that the community would be consulted prior to submitting the key strategy.

But it appeared that local voices, including residents from the two residential towers within the immediate stadium precinct – Victoria Point and Lacrosse – had been snubbed.

“It seems strange to us that there didn't seem to be any requirement that the activation strategy had any input from locals,” a DRG spokesperson said.

The AFL, which owns Marvel Stadium, did not respond to questions put by *Docklands News*.

The failure to consult with the DRG was seen as a snub by the group, especially after its work in bringing together key stakeholders and the community prior to the government-funded works commencing.

In late 2021 DRG organised a webinar for locals with the AFL, builder John Holland Group, Grimshaw Architects and placemaking group Village Well.

During the event, it was reiterated by all parties that a vibrant stadium precinct was dependent on local involvement and buy-in.

“When we started this project, a lot of the questions we were asking ourselves was ‘how can it contribute to the precinct in a civic way? How can it give back to the precinct, and interact, and really start to be a catalyst for this regeneration of Docklands?’” Grimshaw principal Simon Anson told locals.

“Yes, it's really efficient and works really well on game day, but it also has an identity within its everyday mode, which is probably lacking at the moment.”

Village Well managing director Gilbert Rochecouste added that local participation was crucial.

“I think we need to go through another process of engagement with the community to see potential fits and what will work for the area on game day and non-game day. The key word here is ownership and having some skin in the game, where we see some

Continued on page 2.

SPORT, PAGE 03

A NHL stars to descend on Docklands



COUNCIL AFFAIRS, PAGE 06

B Cr Campbell returns after by-election defeat



EDUCATION, PAGE 07

C Electric vehicle lab unveiled at Kangan



COUNCIL AFFAIRS, PAGE 09

D Greenline designs revealed for Docklands



**SUPPORTING THE LOCAL COMMUNITY
BY SUPPORTING THEIR LOCAL DOCKLANDS NEWS**

**MARKET
LANE**
The District Docklands

CONTACT
Suite 208, 198 Harbour Esplanade
docklandsnews.com.au
Tel: 8689 7980

EDITOR
Sean Car

PUBLISHER
Hyperlocal News Pty Ltd
ABN: 57 623 558 725

ADVERTISING
Hyper-local print works for advertisers in our digital world because local people are interested in local news. To sell to the Docklands community, contact Jack Hayes on 0401 031 236 or jack@hyperlocalnews.com.au

Reader contributions are welcome. Send letters, articles and images to: admin@hyperlocalnews.com.au

The deadline for the June edition is May 26.

SOCIAL MEDIA
Follow us on Twitter
@Docklands_News

Like us on Facebook
Docklands News

Follow us on Instagram
@docklands_news

Opinions expressed by contributors are not necessarily shared by the publisher.

hyperlocalnews.com.au
admin@hyperlocalnews.com.au



Locals left out of planning for revived Stadium precinct

Continued from page 1.

of these great institutions that have a local population have some say.”

However, the further engagement never took place.

Despite organising the event — which was well received by all parties — and being Docklands’ only residents’ group, the DRG has had little to no interaction with the AFL since.

It said this was another example of local activities not requiring the involvement of Docklands residents.

“We had the webinar, and they said the redevelopment was going to be a key for Docklands and we specifically spoke about having input, and they responded positively to that,” the DRG spokesperson said.

“We put forward that we didn’t want a stadium precinct that is vibrant for a few hours a week and then dead for the rest. It’s important that that’s the case. I don’t know what this activation strategy is, but it is disappointing that no-one has reached out... it’s not like they don’t know how to contact us.”

However, 20-year Docklands resident and former Docklands Chamber of Commerce (DCC) executive officer Shane Wylie, who resigned from the role in February, said that at no point had he felt the AFL hadn’t been forthcoming about its plans for upgrading and activating Marvel Stadium.

“If anything, the AFL has only been too open as to what it has been planning for Marvel Stadium. At no point while I was at the chamber, did we or myself personally feel left out of the conversation,” he said. “I was very well aware of everything that was going on with Marvel Stadium from four years ago onwards.”

“As for consulting with community, I think consultation has been more than sound when you’re talking about a quarter-of-a-billion-dollar project.”



DCC president Daniel Hibberd said it had made plans to meet with AFL representatives in May to get an update on the project, where he hoped more details would be provided as to future activation plans.

The stadium upgrades are expected to be completed later this year.

Most notably from a community perspective, the revamp will feature a new “Town Square” at the southern end of the stadium.

Outside gates 1 to 3 (at the end of the pathway from Southern Cross Station), the Town Square would represent a naturally lit undercover civic area, including both food and drink outlets and space for “temporary non-traditional events”.

The \$225 million Marvel Stadium upgrade is funded by the state government after the AFL, in a 2018 deal, committed to keeping the Grand Final within Victoria until at least 2058, quelling strong interest from rival states. ●

NOW OR NEVER

Docklands central to new festival

Continued from page 1.

Lord Mayor Sally Capp said, “from ground-breaking music performances to immersive art installations, provocative talks and spectacular technology”, the new event would be “jam-packed with unmissable events and experiences for all ages”.

“The inaugural *Now or Never* festival will celebrate the evolution of Melbourne’s creative scene and provide an opportunity for Australians to experience experimental work from overseas,” Cr Capp said.

“We’re looking forward to attracting new visitors to our city, showcasing our home-grown talent and supporting hundreds of local jobs and businesses in the process. We can’t wait to reveal the full program in the coming months.”

Docklands Chamber of Commerce president Daniel Hibberd said the Chamber looked forward to the event showcasing “our beautiful harbour precinct” and attracting new visitors to Docklands.

“This event and more are set to attract increasing numbers of visitors to Docklands, providing positive economic impact to the precinct, which is likely to continue to grow, and highlights the importance of upcoming events to hit our backyard,” he said. ●

For more information:
nowornever.melbourne.vic.gov.au

MOTHER’S DAY LUNCH

Spoil her with an elegant afternoon at Archer’s.

SUNDAY, MAY 14

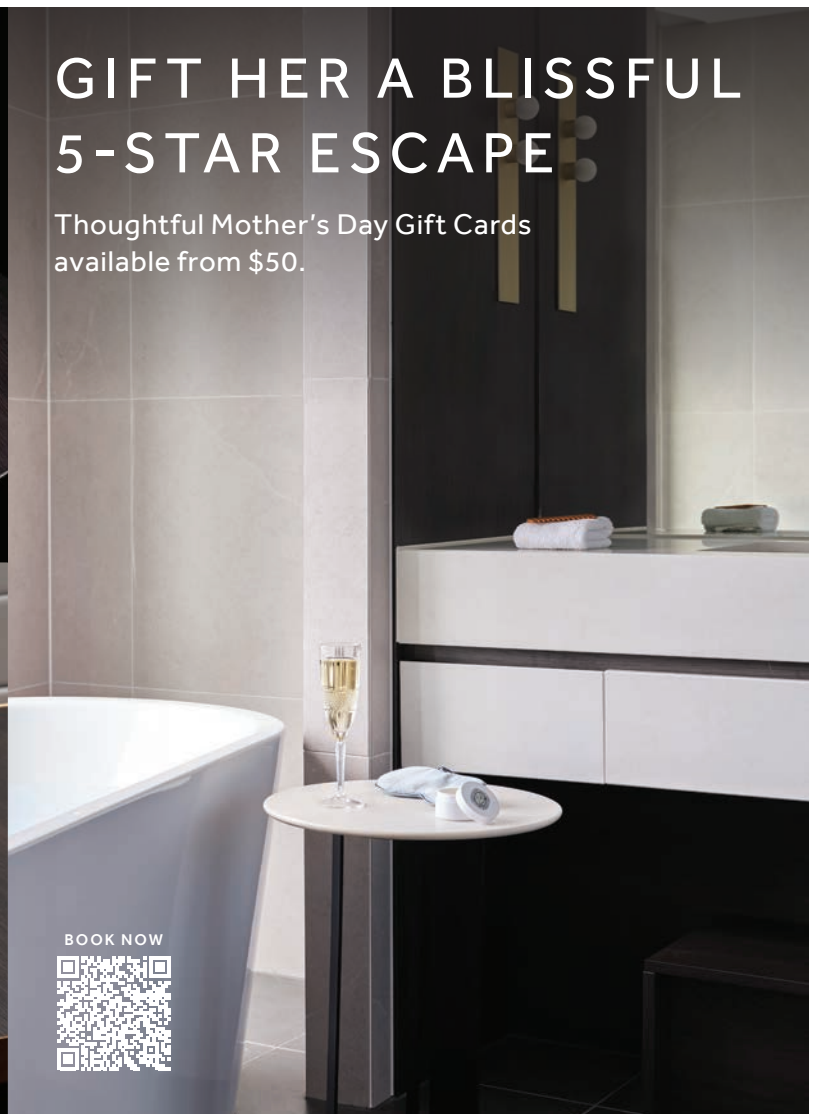
LEARN MORE



GIFT HER A BLISSFUL 5-STAR ESCAPE

Thoughtful Mother’s Day Gift Cards available from \$50.

BOOK NOW



BAKERY HILL WHISKEY DINNER

A delicious night out and award-winning whiskey flight.

SATURDAY, MAY 20

LEARN MORE



MARRIOTT MELBOURNE DOCKLANDS
15 WATERFRONT WAY, DOCKLANDS
VICTORIA 3008

(03) 8638 6000
@MARRIOTTMELBOURNE DOCKLANDS
MARRIOTTMELBOURNE DOCKLANDS.COM



NHL stars to descend on Docklands in nation-first

Some of the world's best ice hockey players will descend on Docklands in September, using the O'Brien Icehouse as a training base before two huge games at Rod Laver Arena.

WORDS BY *David Schout*
SPORT



▲ NHL teams the Arizona Coyotes and Los Angeles Kings are coming to Docklands.

In April the National Hockey League (NHL) announced that the Arizona Coyotes and Los Angeles Kings would travel Down Under — the first time the league has ventured to the Southern Hemisphere — for two pre-season games on September 23 and 24.

Days prior to the expected sell-out games, on September 19 and 20, the teams will practice at the O'Brien Icehouse in a huge coup for local hockey fans.

"We're very excited about it — it's fantastic," O'Brien Icehouse executive director Athol Hodgetts said.

"We're delighted that the public of Melbourne and other states will be able to see, for the first time, the best standard of ice hockey in the world. We believe it'll attract people to the game both as spectators and participants. We're cooperating 100 per cent with the promoters and the NHL, and we think it's a great thing for ice hockey in Australia."

Details around the training days were yet to be confirmed at the time of publication, including whether locals would be able to watch at the 1000-seat Henke Rink.

The Icehouse, which opened in 2010, is home to two teams in the semi-professional Australian Ice Hockey League: the Melbourne Mustangs and Melbourne Ice.

Mustangs captain Brendan McDowell said the announcement was a significant step

forward for the game both locally and throughout Australia.

"It's almost like a dream come true," he told *Docklands News*.

"I've been playing and watching ice hockey for most of my life, and I've been fortunate enough to see three NHL games in Canada, but to have the game come to us here in Melbourne is just awesome."

Mr McDowell, who has represented Australia in ice hockey, said the sport had a small but highly engaged local following, and the announcement was a nice reward for those involved.

"The hockey community in Melbourne is super excited. Ice hockey is no doubt a small sport here, but we've been playing nationally for more than 100 years. That history is quite deep and rich, something most people in Melbourne are unaware of."

According to the NHL, the decision to host pre-season games in Melbourne — the furthest it has ventured and "one of the most difficult projects the league has pulled off logistically" — was the culmination of almost 10 years of discussion and planning.

Ice hockey continues to grow in Australia

and the NHL revealed it ranked fifth among countries overseas in purchasing gear from Fanatics International since 2015, with Victoria ranking first among the states.

Outside of Canada and the United States, Australia accounted for the seventh-most visits to NHL digital platforms in 2022.

"We don't jump into any of this stuff without doing a fair amount of research and making sure that this makes sense," NHL senior executive vice president of international strategy David Proper said.

"Everything that we're seeing is that this a good market for us and a market that is just going to be a lot of fun for the NHL and its players and hopefully for the fan base in Australia."

Proper said the league had no desire to make the event a simple one-off.

"The intention would not be to come to Australia, play and never come back. The intention is to make this a recurring set of games and help continue to grow hockey in the market," he said. "The truth of the matter is, if it weren't so far away, it's a complete layup. Nobody would be questioning why you'd go there. But it's the logistics hurdle that makes everybody question it." ●



Shopfront program puts Melbourne on the world map

WORDS BY *Rafael Gerster*
COUNCIL AFFAIRS

A City of Melbourne initiative to help breathe new life into empty retail spaces has been hailed as one of the most successful in Australia, if not the world.

The shopfront activation program, which was launched in September 2021 in a bid to reignite the city after shopfronts were left empty because of the COVID-19 pandemic, resulted in a total of 67 pop-up shops being opened, allowing budding entrepreneurs, artists and artisans a chance to test out their crafts.

"This is one of the most intensive and successful shopfront activation programs that management has been able to identify anywhere in Australia or the world," a council report highlighting the experiences of multiple activations in the municipality, said in April.

"Testament to the quality of the program, 38 activations were extended beyond their original tenancy agreements."

Among the success stories in Docklands was boutique retailer WØRKS, a high-end personal care and home fragrance brand, which opened at shop 1, 889 Collins St in Victoria Harbour.

Their hand, body and home care products are made ethically in Melbourne and designed authentically in Århus, Denmark. ●

COLLINS SQUARE

Discover More
at Collins Square

From quick bites and comforting classics to lunchtime delights, Collins Square's diverse dining scene has something for everyone.

Monday – Friday
7:00am – 7:00pm*

727 Collins Street, Melbourne

collinssquare.com.au



*Individual retailers' trading hours vary



WANT TO TALK HOME LOANS? MEET YOUR LOCAL ANZ MOBILE LENDERS

Your local specialists on hand anytime, anywhere,
in Melbourne Docklands and CBD

Whether you're refinancing, buying your first home, purchasing an investment property
or looking for a renovation loan, we're here to help.



ADAM CANTSILIERIS

Adam.Cantsilieris@anzmortgagesolutions.com
0477 027 811



ALEXANDER NIKODEJEVIC

Alexander.Nikodejevic@anzmortgagesolutions.com
0488 020 508



JORDAN KOUTSIMANIS

Jordan.Koutsimanis@anzmortgagesolutions.com
0448 883 388



SHIVINESH LALA

Shivinesh.Lala@anzmortgagesolutions.com
0498 883 668



PANFILO SAMLIDIS

Panfilo.Samlidis@anzmortgagesolutions.com
0488 031 843



BOSTON LE

Boston.Le@anzmortgagesolutions.com
0484 388 858

 ANZ Mobile Lending or call us today

ANZ  For Financial Wellbeings

These Mobile Lenders operate as ANZ Mortgage Solutions Brighton ABN 26 157 877 079, an independently operated franchise of Australia and New Zealand Banking Group Limited (ANZ) ABN 11 005 357 522. Australian Credit License Number 234527. Terms, conditions, fees, charges and eligibility criteria apply to ANZ loans. Item No. 98572 04.2023 WZ131330



Weekly fishing sessions launched for Docklanders

After receiving positive feedback on its Wednesday afternoon social fishing club, Docklands Neighbourhood House (DNH) has launched weekend sessions for locals keen on throwing a line into Victoria Harbour.

WORDS BY *Kaylah-Joelle Baker*
COMMUNITY

Despite the weekend sessions only having recently launched in April, DNH community development officer Jason Butcher said it had been great to see people “are loving it”.

And, he was hopeful that the sessions would continue to bring people together, similar to the mid-week sessions.

“During the Wednesday session we have had a few schoolkids come down, and one week we had seven in total,” he said.

“It has been good, and super cute, to see lots of kids and parents fishing together.”

One parent who joined in on a session with their child said, “kids are having fun, learning new skills and growing a new interest, and parents are also meeting new people and there is a good little community growing.”

Another parent also commented on how helpful and enthusiastic the organisers of the sessions were when it came to encouraging people to get involved in the activity.

The social fishing club is open to people of all ages and abilities, with DNH supplying rods and bait for those who don’t have their own.

While the timing of the weekend sessions is subject to change based on the most suitable time for fishing, locals can register their interest prior to the event with DNH.

In addition to the social fishing club, DNH and Docklands Representative Group have confirmed that Docklands Repair Cafe will soon



return, with the first session taking place at the Library at the Dock on Sunday, May 21.

To register for the social fishing club, scan the QR code below. ●



For more information:
facebook.com/docklandsneighbourhoodhouse

DISCOVER PUBLIC ART RIGHT AT YOUR DOORSTEP

Over 8 curated works located opposite Southern Cross Station at Melbourne Quarter.

Browse the collection of artworks ranging from sculptures, installations and light projections by world renowned artists including Reko Rennie, Yhonnie Scarce, Stanislava Pinchuk and more.

Visit melbournequarter.com/publicart or collect a physical map from Monday to Friday 8am-6pm from One or Two Melbourne Quarter concierge.

Scan me!



Councillor Roshena Campbell returns after “disappointing” by-election defeat; would not have voted to back Voice

After defeat in an historic Federal by-election, City of Melbourne councillor Roshena Campbell spoke with Docklands News about the result, the Voice to Parliament, and voting against the Lord Mayor.

WORDS BY *David Schout*
COUNCIL AFFAIRS



▲ Cr Roshena Campbell with Opposition Leader Peter Dutton prior to the Aston by-election (Picture: Facebook).

Returning Cr Roshena Campbell plans to see out the council term after defeat in an historic Federal by-election, and has revealed she would not have joined fellow councillors in voting to support an Indigenous Voice to Parliament.

Selected as the Liberal Party candidate for the April 1 by-election in Aston, a Federal seat in Melbourne’s east vacated by Alan Tudge, Cr Campbell and the party suffered a famous defeat to the Labor government.

The result marked the first time in 103 years that a sitting government had won a seat from the opposition in a by-election.

Following an unpaid leave of absence leading into the election, and after previously vying for Liberal pre-selection in the seat of Casey in November 2021, Cr Campbell said she now planned to remain as councillor until the next City of Melbourne election in late 2024.

“It was a disappointing result,” she said of the Aston loss.

“But I’m obviously delighted to come back to the City of Melbourne and continue my work here for the remainder of the council term ... so no intentions to put my hand up at the moment.

It was a privilege to be a candidate in that by-election but I’m conscious of the work we’ve got to achieve in Melbourne.”

During her absence, City of Melbourne councillors voted to back the “yes” campaign in the lead up to a referendum on the Aboriginal and Torres Strait Islander Voice to Parliament.

The move saw it become the first capital city council to “adopt a firm position on the Voice” according to Lord Mayor Sally Capp, ahead of Australia’s first referendum since 1999 later this year.

While she did not wish to comment on the debate given she was not in the council chamber, Cr Campbell confirmed with Docklands News that she would have voted against the motion at the March 21 Future Melbourne Committee meeting.

She did, however, say she believed council resources were better spent addressing local issues rather than national ones.

“My position has generally been when it comes to advocacy on these issues — we had the debate about changing the date of Australia Day and I opposed the council doing that — that there are significant challenges that are within our remit; making sure the city is clean, keeping rates down, supporting small business and making sure that we provide to keep the city moving,” she said.

“So, my focus is very much about those things that local government needs to do, and making sure we get that right.”

Cr Campbell was elected on the Lord Mayor’s ticket as part of “Team Capp” at the 2020 City of Melbourne election.

However, she has found herself voting along different lines to the Lord Mayor on a number of key issues this council term, namely when she voted against plans for a safe injecting facility in the CBD, changing the date of Australia Day, and perhaps most notably against the city’s rollout of protected cycling lanes.

Cr Campbell’s continued criticism of bike lanes and what she termed “anti-car measures” at Town Hall eventually saw her removed as chair of the council’s transport portfolio.

“I think one of the great things about this country, and we see it even at the local government level, is that we have a robust democracy. We have debate in the council chamber, and I think we owe it to ratepayers to have that robust debate. They want a group of councillors that are going to bring independence and scrutiny to

the decisions being made, so I’m very proud to do that.”

She did not say whether this had caused friction or impacted her relationship with the Lord Mayor.

“The Lord Mayor and I work together day in, day out to achieve things for the city but there will be times when we disagree and there’s been notable examples of that.”

Since being removed from the transport role, Cr Campbell’s sole portfolio is that as chair of City Activation, which has focused on supporting small businesses and attracting new ones.

She was determined to make Melbourne “the easiest place to do business” by reducing red tape and enticing businesses to establish their headquarters in the city.

While the city and particularly the CBD had bounced back strongly on weekends and evenings, which had seen a strong rise in foot traffic, Cr Campbell said there was work to do outside of those times.

“I think the city has shown incredible resilience post-COVID, but I know for a lot of small business owners the past few years have been an incredible struggle and the job of us as council is providing them with what they need ... I know events have played a huge part in getting the return of visitors and we’ve seen pedestrian traffic skyrocket during event periods, but we also need to make sure that we have a long-term plan to grow both the daytime and night-time economy.” ●



David Schout
JOURNALIST
DAVID@HYPERLOCALNEWS.COM.AU

QUEEN VICTORIA MARKET

online



MARKET FRESH PRODUCE HOME DELIVERED



What a great service, we love the fact we can order by 10am and get delicious, market fresh produce delivered to our door on the same day. It’s so fun to open the box that is packed so nicely with no plastic and all of our favourite market goodies.

– Kate

[QVM.COM.AU/SHOP](https://qvm.com.au/shop)



Kangan Institute now home to electric vehicle lab

A new purpose-built electric vehicle (EV) laboratory was unveiled at Kangan Institute in Docklands last month, which the Victorian Government said represented an exciting step in helping “bridge the emerging skills gap” of trained technicians in Australia.

WORDS BY *Sean Car*
EDUCATION

Victorian Minister for Training and Skills and Higher Education Gayle Tierney officially opened the new facilities on April 3 at Kangan’s Automotive Centre of Excellence at Batmans Hill Drive.

Established thanks to a \$1.4 million investment from the state government, the advanced automotive and electrical lab is home to the latest technology in electronic training boards and simulators, new computers and software programs, and sophisticated teaching aids.

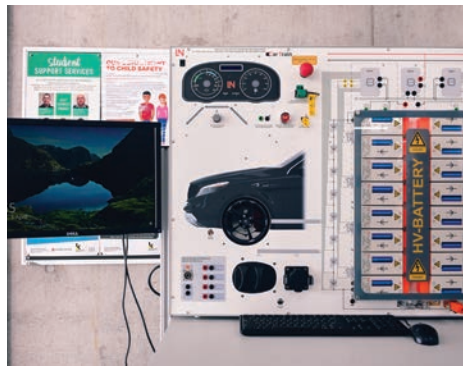
This equipment can simulate almost all variants of EVs, making it flexible and adaptable to current and future markets.

Minister Tierney said the facilities would improve the learning opportunities of new students and apprentices, as well as upskill existing industry technicians.

“This investment will support auto industry workers to become fully trained EV technicians – getting them skilled and ready for the jobs of the future,” she said.

“With more electric vehicles on our roads, it’s critical that Victorians have the specialist training they need to service them safely.”

To coincide with this investment, Kangan Institute will deliver a wide range of EV-specific accredited courses and skills to give those in



the automotive industry the chance to upskill. A new apprenticeship program specialising in EVs will give all Australians the opportunity to train and work in an emerging industry.

Delivered through its \$12 million TAFE Equipment and Facilities Fund, the government said the program would help achieve Victoria’s target for EVs to make up 50 per cent of all new light-vehicle sales by 2030.

Minister for Climate Action Lily D’Ambrosio

Docklands translators given full-time roles

WORDS BY *David Schout*
BUSINESS

Fifty Docklands-based translators, whose work includes taking Triple Zero calls from non-English speaking Australians, have been transitioned from casual into full-time work.

The Translating and Interpreting Service (TIS) National call centre workers, based at the Department of Home Affairs on Bourke St, had until now held labour-hire positions.

The first of its kind globally, TIS has operated since 1973 providing a free telephone interpreting service, and the operators handle more than a million calls each year, including more than 25,000 to emergency services.

They also translate vital information into more than 150 languages, including during the COVID-19 pandemic, bushfires, and floods.

Minister for Home Affairs Clare O’Neil said it was an “an essential service for a multicultural country”.

“The TIS National contact centre connects Australians to essential services that we all rely on every day, including Triple Zero and other emergency support,” she said.

“In our multicultural society it’s critical that language not be a barrier to accessing these services, especially during natural disasters and other crises.”

At an April 13 announcement at Victoria Harbour she said the Federal Government was committed to reducing insecure work, which had real world impacts.

“We met David upstairs, a young dad of three young children who is employed as a labour hire casual in a job that was clearly permanent part-time. Now he’s got that job security that he can count on and we’re really proud to be a part of making that change.”

Brooke Muscat from the Community and Public Sector Union Victoria said permanent public service jobs made for better service delivery and better workplaces. ●

FIRST / MAB



FIRST.

Escala NewQuay

**HOMES, DEALS, ADVICE.
THE NEW PLACE FOR
FIRST HOME BUYERS.**



FIRSTMAB.COM.AU



Do it bigger,
when you're
backed by BOQ

%

**Up to
85% LVR***

⌚

**30 Year
Loan Terms***

Available on new Business Term Loans up to \$3m.

Talk to us about your business today or
visit boq.com.au/businessterm

BOQ Docklands

Josephine Tan, Owner-Manager 0408 336 838
Belinda Wynn, Branch Manager 0408 288 282
03 9248 0188 docklands@boq.com.au
facebook.com/boqdocklands boq.com.au



Terms and conditions and eligibility criteria apply. * Small and Medium Business, security type and loan purpose eligibility criteria applies (SME eligibility criteria). Where the SME eligibility criteria is not met the maximum Loan-to-Value ratio is 70% (non-residential and mixed security) or 80% (residential security), and the maximum loan term is 15 years (non-residential and mixed security) or 25 years (residential security). Not available on Self-Managed Super Fund (SMSF) loans. Credit provided by Bank of Queensland Limited ABN 32 003 656 740 AFSL and Australian Credit Licence no. 244616 (BOQ). Conditions, criteria and fees apply. BOQ's standard credit assessment criteria apply. You should obtain and read the relevant T&Cs and Guide to Fees and Charges that apply to this product before making any decision about whether to acquire or continue to hold it, available at your local BOQ branch or at boq.com.au

Please support our advertisers because without them we would have no Docklands News

ADVERTISEMENT
Your City of Melbourne community update

BINS BOOST CONFIDENCE FOR MEN LIVING WITH INCONTINENCE

A trial of free incontinence product disposal bins across the City of Melbourne has been expanded to three extra locations to make the service more accessible to the community.

The bins are now located in the men's and all-gender toilets at the following Council-owned facilities:

- Carlton Baths
- City Library
- Fawkner Park Senior Citizens Centre
- Jean McKendry Neighbourhood Centre
- Kathleen Syme Community Centre
- Kensington Neighbourhood Centre
- Library at the Dock
- Melbourne Town Hall public toilets (on Collins Street)
- North Melbourne Community Centre.

Melbourne is the first capital city in Australia to install incontinence product disposal bins in Council-owned facilities.

The 12-month trial began in September as part of the BINS4Blokes men's health campaign, an awareness and advocacy campaign promoting the installation of incontinence bins in public toilets.

The City of Melbourne is an inclusive and accessible city and we want people who experience incontinence to have access to the facilities so they can feel confident to get out and about.

In launching the trial, Councillor Jamal Hakim said it's important more people have access to proper disposal bins for their incontinence products - particularly given many instances of incontinence can be much better managed with the right resources.

"With the proper facilities to dispose products, we hope those living with incontinence can continue getting out and about, and doing what they love when they're here in the City of Melbourne," Cr Hakim said.

"The trial will not only showcase a practical solution for those living with incontinence, but importantly, raise awareness and facilitate a much-needed conversation on the topic."

The bin trial runs until the end of September.

For more information, visit melbourne.vic.gov.au/bins4blokes



HOW TO GET YOUR FLU VACCINE

With a significant flu season predicted this year, we are now taking bookings for flu vaccinations through our new online booking management program VaxApp.

Bookings are now available for our community sessions, individual appointments and for the first time, on-site workplace immunisations.

Influenza vaccination significantly reduces the risk of contracting influenza and passing the virus to family, colleagues and friends.

For more information and to book, visit melbourne.vic.gov.au/flu vaccine

New Greenline designs revealed as Birrarung Marr works pushed back

WORDS BY *David Schout*
COUNCIL AFFAIRS

New designs for the \$300 million Greenline project have been revealed by the City of Melbourne, providing a clearer picture of the council's plan for the "city-shaping" trail.

Works at Birrarung Marr, which represents the first section of the four-kilometre path that is set to run along the Yarra River's north bank to the Bolte Bridge, won't commence until late-2023 at the earliest, despite an earlier expectation works would start in mid-2023.

The latest renders, from ASPECT Studios and landscape architecture group TCL, show more details surrounding proposed boardwalks, event spaces, wetlands, and cultural meeting places.

The latest designs included further details regarding an ecological river's edge outside the World Trade Centre, Crowne Plaza and Seafarers Bridge, including "places where the community can interact directly with water".

Further west, the renders revealed plans for new plantings, seats and shade along the river frontage on the Collins St length of Docklands.

Perhaps most notably, they also included more details about an "ecological restoration" of North Wharf.

"A new public park is planned at the end of the north wharf precinct of Victoria Harbour — becoming a key destination at the city's edge which celebrates the ecology and character of the Yarra River Birrarung," the report noted.

While the designs are subject to change and are conditional upon approvals, they further emphasise the council's bid to revitalise what it views as a substandard part of the city.

Earlier draft plans for Greenline described Northbank — in contrast to its counterpart across the river — as of "poor quality", "lacking activity", "prone to safety and security issues",



▲ (Main) Collins Wharf (top right) near Crowne Plaza and North Wharf, (bottom left) a boardwalk along Australia Wharf.

and an "overall underwhelming experience".

"[It] is currently the unattractive counterpart to the revitalised Southbank which features sunny, attractive, and generally well-maintained pedestrianised public spaces and active building frontages adjacent to a thriving Arts Precinct," the earlier plan said.

It was not immediately clear why the timeline on "site one" works at Birrarung Marr had been pushed back, and the council, which was yet to put a request for tender on the project, said it had "targeted" a late 2023 commencement.

The new designs were revealed as part of an update on the Greenline masterplan to councillors at the April 4 Future Melbourne Committee meeting.

From April 5, a six-week consultation period with the community and key stakeholders began, allowing the council to gather information — both in-person at workshops, meetings and pop-ups, plus online at the Participate Melbourne webpage — to "further develop ideas and build a shared vision" for Greenline.

"Development of a shared vision is important given the technical complexity of the Greenline Project, community expectations, involvement of multiple stakeholders (property owners, managers and approval agencies) and the ongoing need to secure additional funding contributions," the update read.

Public consultation for Birrarung Marr works were already undertaken in August and

September, 2022, and results were generally positive, with 56 per cent of nearly 200 respondents mostly endorsing stage one works, saying they were "very good" or "excellent".

The City of Melbourne has said Greenline would deliver one of the biggest transformations of the city since the completion of Southbank Promenade in 1990 and the opening of Federation Square in 2002. ●

For more information:
participate.melbourne.vic.gov.au



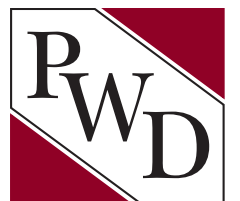
Glenn Harvey answers your legal questions

Q. My relationship with my spouse has broken down but how can I afford legal representation?

A. There are various options including obtaining legal finance payable at the end of your case when you receive your property settlement.

Please call to make an appointment for a FREE NO OBLIGATION 30-minute Family Law Clinic via video conferencing or telephone.

Pearce Webster Dugdales Working with individuals, families & business



Pearce Webster Dugdales Level 4, 379 Collins Street, Melbourne T 9614 5122 www.pearcewebster.com.au



Walk for PetWellness returns to Docklands

WORDS BY *Helena Morgan*
COMMUNITY

Pooches and their carers are invited to a five-kilometre walk around Docklands in support of a community-based animal rescue organisation for the second year running.

Following the success of last year's "Walk for PetWellness," PetWell and Realestate Services by Mirvac is hosting another walk to generate awareness surrounding pet wellness in the community.

The 5km walk is on Sunday May 7, starting at Point Park in Docklands. Those involved will walk to Ron Barrassi Senior Park and return to Point Park.

All dog owners and non-dog owners are invited to attend the fun and enjoyable day, which will feature stalls, complimentary canine dental health checks and body scoring exams and the services of a pet caricaturist to draw portraits of the cherished pooches.

Funds from the walk will be donated entirely to Second Chance Animal Rescue (SCAR), a clinic based in Craigieburn committed to saving shelter animals and providing veterinary care and pet food for families in crises.

Pet Well is aiming to register 500 people for the walk, however, 100 per cent of the registration fees will be donated to SCAR. The cost to register is \$29.

To register for the Walk for PetWellness, visit petwell.au/walk/ ●

Automatic river cleaner "Geoff" lands on the Yarra

WORDS BY *David Schout*
ENVIRONMENT

Next time you're walking along the Yarra River, look out for Geoff.

Not a middle-aged man on his morning stroll, "Geoff" is, in fact, an innovative new waterway cleaner that has just arrived on the busiest stretch of the river.

The hydro- and solar-powered cleaner will be moored on the river near the Melbourne Aquarium for the next six months, looking to collect as much floating rubbish as possible around Docklands, Southbank and the CBD.

Designed by Queensland foundation Ocean Crusaders, Geoff first captures debris via two floating boom arms which guides rubbish towards a conveyor belt powered by a traditional water wheel.

When the current is low, solar panels help power the wheel.

Once on the conveyor belt, rubbish is moved and dropped into a large rear skip for removal, with cameras — also solar-powered — monitoring the operation to inform park rangers when the bin is full.

"The water wheel means that as the river runs faster, the conveyor will also run faster and collect debris quicker," Parks Victoria District Manager Sarah Eggleton explained.

"Geoff is an innovative new system that we're hoping will increase the amount of rubbish we can take out of the river, particularly in places where our litter traps can't be used."

Parks Victoria operates 20 litter traps along the Yarra (also referred to by its traditional name "Birrarrung") and Maribyrnong Rivers, with Geoff the latest addition.

In 2021 the traps collected more than 145 cubic metres of rubbish — the equivalent of around 900 bathtubs.

Yarra Riverkeeper Charlotte Sterrett said she



▲ "Geoff" the new automatic river cleaner.

would love to see similar innovations employed on other rubbish-heavy waterways.

"We love Geoff. He not only helps with cleaning up thousands of kilos of rubbish along the Yarra, Birrarung, but he is also a visual reminder to everyone that litter and pollution are a massive problem for Melbourne's waterways," she told *Docklands News*.

"Having Geoff around to collect litter close to the mouth of the river is only one part of the solution to our litter problem, however. We need to stop litter at its source, including the billions of pieces of microplastics that enter our waterways each year."

"Years of research by environmental groups such as the Yarra Riverkeeper Association and the Port Phillip Bay Ecocentre have found that litter pollution is on the rise despite many



efforts to curb it. This requires better legislation, better management practices and tougher enforcement. Litter is everyone's business — this includes businesses, councils, governments, and communities. It's time to stop trashing our environment." ●



Footscray Road closed westbound

! From late-March to late-May 2023



Footscray Road westbound between Dock Link Road and Appleton Dock Road will be closed from **late-March to late-May 2023** so the launching gantry can continue moving safely above the road.

Detours via Dynon Road will be in place. Drivers should plan ahead and allow for extra travel time.

Thanks for your patience

We understand that these closures may be disruptive to you. Thank you for your ongoing patience as we work as quickly and safely as possible to get the job done.

Visit bigbuild.vic.gov.au for more information, including detour routes and exact closure times.

In partnership with:



Keep in mind there are other disruptions during this time.

Find a detailed list at bigbuild.vic.gov.au



Authorised by the Victorian Government, 1 Treasury Place, Melbourne

The Docklands space renewed to accommodate snap-happy kindred spirits

WORDS BY *Kaylah-Joelle Baker*
BUSINESS

Following the Renew Docklands program ending in late March, Chris Bowes and Jade Richards-Butler of Kindred Cameras, which opened in February, said they continued to be “optimistic” about their future in Docklands.

Situated at 454 Docklands Drive, the shopfront is a multi-use creative space geared towards the practice of photography, and contains two studios, a gallery, and a co-working room.

“Kindred Cameras is a lot of things, but I think of it as a mix between an artist studio, a photography studio, and a camera club,” Chris said.

“We have taken all the best bits from those worlds and put them together.”

While Kindred Cameras is a space to marvel at the creativity of other photographers’ works, which can be seen through the weekly exhibitions that the gallery holds, at its heart it remains a fun and uplifting educational space.

As a photography teacher at RMIT, with an artistic background, Chris finds enjoyment in teaching people at all stages, and is hopeful that Kindred Cameras will allow him to help teach more locals about the magic of photography.

“We deal with a lot of photographers in their early stages, so we really wanted this to be a place that was affordable and flexible for people in those early years and somewhere where they could grow their practices as part of a community,” he said.

“We have a set program of workshops that we run here, and I teach everything from traditional photography to experimental and alternative photography, or I also offer one-on-one sessions where it is up to the person what they want to learn.”

To help encourage locals to get more involved with the studio, Chris is currently in the process of creating a Docklands photo tour to take locals around to all the spectacular photo spots at their doorstep.

“I have been out scouting locations for a Docklands photo tour, and I cannot believe how photogenic Docklands is and how great the city space and landscape shots are,” he said.



“It is way better than the CBD because you get the whole city skyline but then also the boats on the harbour, the water, and the Bolte Bridge.”

In addition to the photo tour launching in June, a Docklands-themed exhibition will also take place within the Kindred Cameras’ gallery space, and will include all of Chris’s photo scouting shots. ●

For more information:
kindredcameras.com



Berth’s Biggest Morning Tea returns with even greater goals

WORDS BY *Kaylah-Joelle Baker*
EVENTS

After a short hiatus due to COVID-19, Berth Restaurant’s Biggest Morning Tea is returning this year with hopes to once again be one of Victoria’s biggest fundraisers for Cancer Council Australia.

In 2019, Berth had its biggest year yet raising more than \$20,000, and now for its first event back post-pandemic, Berth’s Lisa Pham, who is in-charge of hosting the event, said she was hopeful of “beating it” and reaching \$25,000.

Berth has been a part of the annual fundraising day for the past 10 years, raising in excess of \$100,000, and following a tough time during the pandemic with a couple of staff members “impacted quite heavily”, the team is looking ahead with determination.

“Everyone has been impacted in one way or another by cancer, and it is something that has impacted us [at

Berth] more in the past few years,” Ms Pham said.

“To be able to raise some money for Cancer Council is the least we can do as a business, and both the ladies from our staff who were impacted will be speaking on the day about their experience.”

The morning will take place at Berth (45 NewQuay Promenade) on the official fundraising day of Thursday, May 25, from 11.30am to 2.30pm, and tickets are selling fast.

Of the tickets released, the six VIP tables of 12 seats have already sold out, with general admission tickets still available for \$50 each.

The morning tea will include Berth’s renowned high tea grazing style, coffee and tea, door prizes, raffles, auctions, and games, with many local businesses already onboard for the community event.

To help Berth continue to raise money for the Cancer Council and its affected community, contact events@berth.com.au. ●

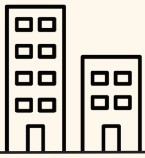


City Staycay?

Book Dorsett Melbourne from \$199



DORSETT
MELBOURNE



PROPERTY & REAL ESTATE

What is REALLY happening in the inner-city apartment market?



Well, the team at Lucas found out. We were fortunate enough to have an exclusive tour of the realestate.com.au headquarters, where we had the chance to listen to one of their top economists. Here are my top three takeaways from the presentation ...

WORDS BY *Baden Lucas*
LUCAS REAL ESTATE



1

Demand for inner-city apartments for both sales and rentals is rising, but interestingly, more investors have been selling than buying. This is due to several reasons, including increases in interest rates, changes to legislation that (in some cases) has negatively impacted rental providers, and the demand from first-home buyers.

2

The search criteria for three-bedroom apartments on realestate.com.au has increased from 30 per cent to 41 per cent over the past three years, driven by the value for money in the inner city and the shift to remote work, leading to the increase of families moving into the city.

3

Supply constraints are also causing prices to rise in the city, with population growth in Melbourne City reaching 16 per cent over the past five years and building costs growing at the fastest rate in 40 years. Major developments in the CBD, Docklands, and Southbank are also struggling to get off the ground, further decreasing supply in the market.

April is typically a slower month for the property market due to the multiple long weekends; however, in both the sales and rental market there has still been an abundance of activity. Over the past month, we received more than 1000 new buyer enquiries and more than 3500 new tenant enquiries, and our open for inspections have been incredibly well attended. Another interesting statistic that took us by surprise at the PropTrack presentation was the perception from vendors as to whether or not now is a good time to sell.

According to realestate.com.au, just 19 per cent of current property owners think now is "a good time to sell" compared with 48 per cent in April 2021.

We found this remarkable, given the exceptional results that we've experienced in Melbourne, Docklands and Southbank so far this year. ●



THE NEW-LOOK 2023 DOCKLANDS DIRECTORY

For where to shop, eat, stay and play, head to docklandsdirectory.com.au

To list your business or for advertising enquiries, Contact: jack@hyperlocalnews.com.au



BarryPlant

Docklands and Yarra's Edge
(03) 9936 9999



1403/815 Bourke St, Docklands

A fabulous home awaits with beautiful surrounding views of the water and the City skyline.

A rare corner apartment, with an L-shaped wrap around balcony is perfect for entertaining or relaxing. With a north facing aspect, it is blessed with plenty of natural light.

🛏️ 2 Bed 🚿 2 Bath 🚗 1 Car

Auction: 20th May 11am

Price Guide: Contact Agent

Agents:

Eugene Louey
0401 299 997



MAB reveals new digital platform dedicated to first home buyers

NewQuay developer MAB Corporation has unveiled FirstMAB – a new, purpose – built first home buyer website.

The new online service has been designed to showcase all of MAB's residential product for first home buyers in one easy-to-understand platform, while helping buyers navigate the process of purchasing a first home.

FirstMAB incorporates both off-the-plan and ready-to-move-in apartments, with more than 55 home listings (priced below \$750,000) across MAB's four residential projects that are currently available in Merri Northcote, Preston Crossing, Tempo Box Hill, and Escala NewQuay here in Docklands. Prospective buyers who sign up to the website will also receive priority access to new releases.

Recognising the many challenges that first

home buyers must overcome, MAB set out to create a digital platform where buyers can compare apartments and easily filter by location, price and bedroom configuration to best determine what suits their budget and lifestyle, rather than having to sift through multiple websites and listings.

FirstMAB will provide a more extensive list of suitable properties compared to other online platforms, which typically list both high- and low-value properties to meet a broader market demographic. The website will include specific purchasing opportunities and unique special offers while a dedicated resources section provides advice and tips to help buyers navigate the home-buying process. ●

For more information:
firstmab.com.au



Is this Docklands' most expensive home?

“

With an asking price of \$6.5 to \$7 million, 3802/100 Lorimer St could become Docklands' most expensive home.

”

WORDS BY *Jack Hayes*

The New York-style penthouse apartment, currently owned by Hawthorn Football Club legend John Kennedy, boasts panoramic views of the city, four generous-sized bedrooms with ensuites (with the flexibility to turn living and home office into a further two bedrooms), an expansive alfresco terrace, six secure car parking spaces and a full suite of Gaggenau appliances.

Further highlights include custom-built cabinetry, built-in barbecue, a full-sized laundry, video intercom entry, zoned heating and cooling and electric blinds.

Residents of the building have access to the pool, spa, steam room, sauna, gym, and concierge service.

The sale is looking to break the current record of \$6.91 million held by a South Wharf Drive townhouse that sold in 2021.

Expressions of interest for 3802/100 Lorimer St close at 5pm on Friday, May 12. ●

DISCOVER THE LUCAS DIFFERENCE

Find out how the value of your property has changed!

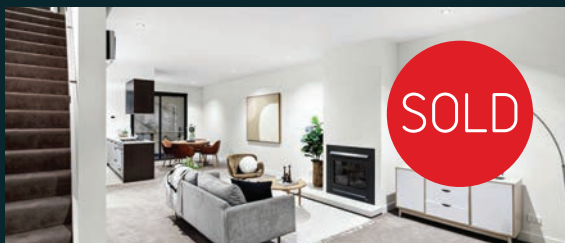
When it comes to vertical living, nobody understands local real estate like we do. We know the properties, the people, and the community like no other. Our unique approach specialising in Melbourne's vertical living translates to better results and shorter days on market.

Thinking about selling? Let us show you the Lucas difference.

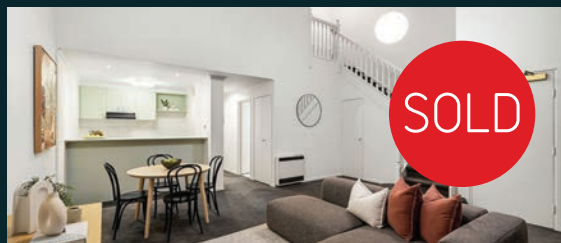
LUCAS



Docklands



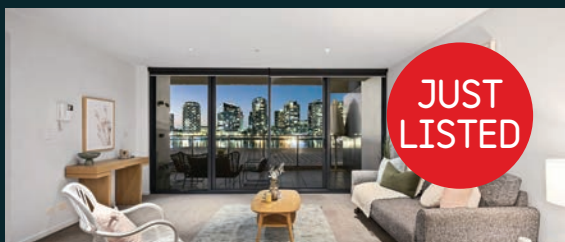
227/9 wharf street, docklands | SOLD for \$838,000
cary thornton | 0437 204 556



186/468 la trobe st, west melbourne | SOLD for \$905,000
mark sutherland | 0418 691 585



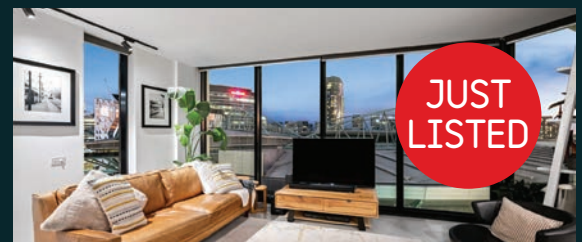
2307/33 mackenzie st, melbourne | SOLD for \$500,000
lynn lum | 0474 044 293



45/55 victoria harbour prom, docklands | \$900,000 - \$990,000
cary thornton | 0437 204 556



1804/2 newquay prom, docklands | \$1,000,000 - \$1,100,000
thomas tregonning | 0413 317 304



1611N/883 collins st, docklands | \$630,000 - \$680,000
serena su | 0499 083 362

9091 1400 | lucasre.com.au

ADVERTISEMENT
Your City of Melbourne community update

AMBITIOUS WATER PROJECT TO SAVE 60 MILLION LITRES



We're drought-proofing Princes Park for future generations

It's home to the Carlton Football Club, local cricket and bowls clubs and a favourite for families, and now Princes Park is set to become home to our city's next ambitious stormwater harvesting project.

The Princes Park Stormwater Harvesting Project will see excess stormwater harvested from Moonee Ponds Creek and used to irrigate the green open spaces, significant trees and playing fields at the 38.6 hectare site in Carlton North.

Not only will it save more than 60 million litres of drinking water each year, but the system will help future-proof the community's recreational spaces and premier sporting facilities against drought.

The health of Moonee Ponds Creek will also be improved with pollution, litter and sediment removed along with the excess water.

The stormwater harvesting system, including storage tanks and treatment system, will be housed underground with a pump station located alongside existing pump infrastructure in Royal Park.

During a heavy rain event, excess water will be collected and pass through a pollutant trap where litter and large pollution is removed, and then through a chamber to remove coarse sediment.

The treated stormwater will then be transferred to underground storage tanks at McPherson Field in Royal Park.

These tanks will be able to hold five million litres of water to make the most of major rainfall events and store water for drier periods.

The water will be pumped into an underground irrigation tank in Princes Park via a UV disinfection system, removing any pathogens before the water is used to maintain the park's ovals and gardens.

As our climate changes, intense rainfall, flooding, extreme heat events and drought are becoming more common in Melbourne. This project is part of our climate and biodiversity emergency response and will enable us to adapt to the impacts of climate change and improve water quality and green spaces.

The \$7 million Princes Park Stormwater Harvesting Project is supported by the Victorian Government's Integrated Water Management Grant Program.

Design work for the project has begun following community consultation, with construction set to begin later this year and be complete by 2025.

Measures will be in place to minimise disruption to sporting clubs and park users during this time.

To learn more about this project, visit participate.melbourne.vic.gov.au/princes-park-stormwater-harvesting-project/project-overview

BENEFITS OF THE PROJECT

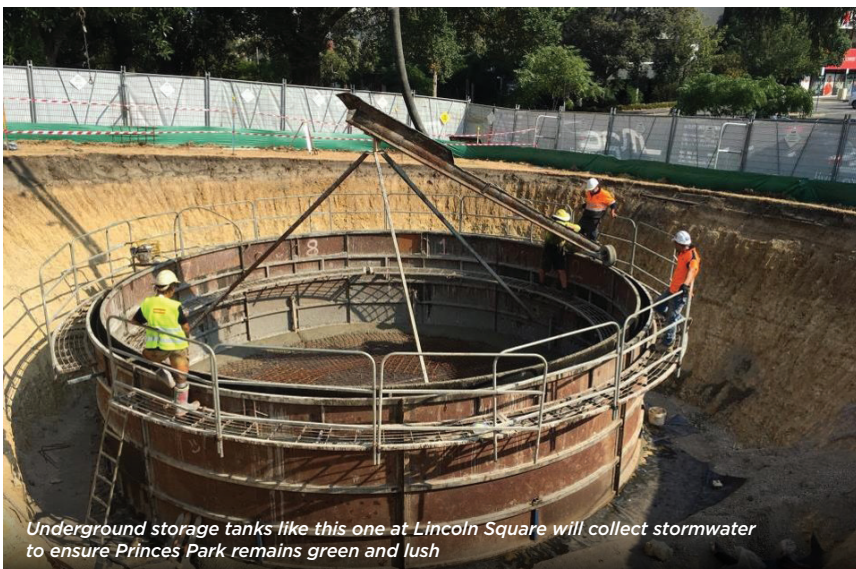
- More than 60 million litres of alternate water will be collected each year for Princes Park, saving precious drinking water. That's the equivalent of 24 Olympic swimming pools.
- Litter and up to 20,000 kilograms of sediment and 200 kilograms of nitrogen will be removed from Moonee Ponds Creek each year.
- Soil moisture will be replenished through more sustainable management of the natural water cycle.
- We're helping drought-proof Princes Park by ensuring it can source 80 per cent of its water needs via alternative sources.

DID YOU KNOW?

We have six stormwater harvesting systems that capture and store 230 million litres of rainwater each year which is used to keep our parks, gardens and trees lush and green.

Birrarung Marr, Royal Park, Queen Victoria and Alexandra gardens, Fitzroy Gardens, Darling Street, and Lincoln and University squares are all kept green and lush thanks to harvested stormwater.

Currently 23 per cent of our water use is from stormwater and rainwater harvesting.



Underground storage tanks like this one at Lincoln Square will collect stormwater to ensure Princes Park remains green and lush

KEEP IN TOUCH

To stay connected with all the latest news from the City of Melbourne, follow us on social media and subscribe to *Melbourne News* at news.melbourne.vic.gov.au

Connect with us

- /cityofmelbourne
- @cityofmelbourne
- @cityofmelbourne



ADVERTISEMENT
Your City of Melbourne community update

NOT TO WATER IT DOWN, BUT RAIN IS THE KEY TO OUR BIG GREEN CITY

Water is essential for improving liveability in Melbourne, keeping our green spaces healthy and cooling the city. Learn how we're creating a more sustainable water system for the city.



We are introducing permeable surfaces to our streetscapes to capture rainwater for reuse

Melbourne's four seasons in one day may dampen the spirits of some, but the truth is our much-maligned wet weather is actually the key to ensuring our city stays cooler and greener in the face of climate change.

Each year enough rain falls in our municipality to fill about 8000 Olympic swimming pools.

Of this rain, a little over half is collected on sealed surfaces, such as roofs and roads.

Which means, more than 10,000 million litres of stormwater literally washes down the drain, taking with it litter and pollution.

So at the City of Melbourne, we're doing everything we can to collect more of it, clean it and store it for irrigation.

Because by 2050, demand for water to maintain our parks and growing urban forest will double.

And while we have been fortunate to have healthy rainfall; we remember the Millenium Drought when we experienced rainfall 14 per cent below average.

This saw our world-renowned parks and gardens significantly impacted, turning to dust and trees suffering from lack of water – not just during the drought but for a decade after.

So we're prioritising water sensitive urban design, especially using stormwater runoff to support our precious trees and gardens.

Historically, cities were designed to be impermeable, and that's the thinking we're now challenging.

Bourke Street Mall, for example, is a traditional streetscape. Rain falls and runs straight off the pavement, into the drain and out into Port Phillip Bay. It's a waste. So we're trying to find more ways to capture and reuse it in a more sustainable way.

This includes introducing permeable surfaces, rather than letting it literally drain away.

We have developed six stormwater harvesting systems across the city collectively storing and supplying an average 230 million litres per year.

Our greening projects across the city are kept green with stormwater, including our raingardens and tree pits, as well as underground soil trenches that increase soil moisture for trees.

We're also encouraging partnerships with private buildings and developers, helping them intercept rainwater from rooftops to irrigate their plants.

Our city's renewal areas are low-lying and flooding is a major challenge.

So we're designing and delivering lush and cool streetscapes that carry out a flood management role.

For instance, in Fishermans Bend, the largest urban renewal project in Australia, we are part of the team implementing the largest water-sensitive urban design project.

The flood management approach will reduce flood risk by increasing permeability, retaining water in the landscape, and capturing water for later use.

These are just some of the elements of our Water Sensitive Urban Design approach.

WATER USE TARGETS

We've set a goal that by 2030, 50 per cent of all council's water use will be sourced from alternative sources - stormwater or recycled water - rather than drinking water.

We want to see 20 per cent of all water use across the municipality sourced from alternative water sources.

To learn more, visit urbanwater.melbourne.vic.gov.au

Meet Melbourne's water guru

When Mohammad Kharouf started as the City of Melbourne's water management expert, he started without a blueprint.

"No one else had ever held a job like this in the municipality," Mohammad said.

"I still remember the excitement when the interview panel said it would be up to me to shape the role."

Australia had just lived through the Millenium Drought, and Mohammad's job was to help Melbourne improve its water management and prepare for future extreme weather events.

At that time, we'd just installed a new central irrigation control system, but its programming needed some finessing.

"No one knew me, so it took some convincing to let them hand over the reins to change the programming," Mohammad said.

With so many of Melbourne's gardens heritage-listed, Mohammad was given access to control irrigation at Kings Domain - which has fewer water-sensitive plants - as a pilot.

"Before coming to Melbourne I'd been managing water and irrigation in Riyadh - the capital and largest city of Saudi Arabia - so I knew I was up to the challenge.

"But everyone was understandably a little wary - our city's water is such a precious commodity."

Fast forward three months, and Mohammad had halved water use in Kings Domain through careful and expert water management, and our plants were flourishing.

"I've been here ever since. It will be 10 years in October."

Mohammad has spent that time building a more refined central irrigation and water management system, and expanding its reach into every City of Melbourne neighbourhood.

Today, Melbourne boasts world-leading water management infrastructure that helps us understand how much water to apply and when.

"Our central system takes into account rainfall in the area and monitors moisture through soil probes hidden throughout our parks and garden beds.

"We also have access to satellite imagery that provides important information on the health of Melbourne's precious plants."

But for Mohammad, nothing beats a site visit.

"The virtual data we can collect is second-to-none, but one of my favourite parts of this job is going out and seeing the plants and gardens thriving in real-time."

Mohammad and our Parks and City Greening team are the careful caretakers of 230 hectares of irrigated space across the city.

"We really care about Melbourne's water, and use every drop sustainably to keep our city green for current and future residents, workers, students and visitors.

"I never take for granted the legacy I've been able to build here over the past decade.

"A lot of what I do is balancing water use behind-the-scenes - monitoring rain and soil sensors, adjusting for seasonal differences and carefully finessing the central control system.

"But the plants don't lie. If they're healthy, then all that hidden work is paying off."

Mohammad works closely with the Climate Change and City Resilience team to use harvested storm water to irrigate our big green city, and enhance drought resistance.

We're now home to six stormwater harvesting systems, that can hold 30 million litres of captured rainwater. Each year we harvest up to 200 million litres of rainwater for irrigation use.

"Hopefully Melbourne will never again experience a drought event like the one that created my role all those years ago," Mohammad said.

"But we are now in a better position to adapt and prepare for extreme climate conditions, and we are proud to keep building this capacity."

Check out Mohammad's work the next time you're enjoying our city's greenery.



Mohammad Kharouf inspects the city's plants and gardens to check they're receiving sufficient water.

From hypersonic vehicles to dinosaur jaws: 30 years of making advanced composites in Fishermans Bend

“

You'd be hard pressed to find anyone with more lived experience working in Fishermans Bend than chairman of Advanced Composite Structures Australia (ACS-A) Professor Murray Scott.

”

WORDS BY *Sean Car*
BUSINESS

In a career spanning more than 45 years, which all began back in 1977 at 304 Lorimer St with what was the Commonwealth Aircraft Corporation, then Hawker de Havilland and finally Boeing Aerostructures Australia (BAA), now at 226 Lorimer St, the decorated aerospace engineer in many ways embodies the proud history of innovation in Fishermans Bend.

With ACS-A today based at 198 Lorimer St – one of three locations it has operated in along the street during its 31-year history – Prof. Scott is very familiar with the area's “incredible aerospace heritage” and the “great foundation” it provides current government planning efforts to build on.

In reflecting on his journey in Fishermans Bend, he said, “I do remember at the time [1977] wondering how much of my professional career might be spent down there, and it's turned out to be pretty much all of it.”

“The fact is that when people drive along the roads in Fishermans Bend, they wouldn't know that some of those same spaces were once runways or aircraft factories,” he said.

“Interestingly, there's still some remnants of facilities that people wouldn't even know were part of, for example, the Commonwealth Aircraft Corporation ... but I know! I used to go in those buildings.”

“So, it's all there – the past and the future – it [Fishermans Bend] couldn't be in a better location.”

And, since those early days, Prof. Scott has gone on to make many major contributions to the field of aerospace engineering, playing a key role in adding to its rich history across industry and academia both here in Australia, and overseas.

Today, he continues his unwavering dedication as chair of the Joint Board for Aerospace Engineering of Engineers Australia and the



▲ Professor Murray Scott.

Royal Aeronautical Society, a committee member of the International Council of the Aeronautical Sciences, and as an Adjunct Professor in the School of Engineering at RMIT University.

And, of course, in his role as chairman of ACS-A, a company which last year celebrated 30 years working in research and development of advanced composites that all began with the establishment of what became the Cooperative Research Centre for Advanced Composite Structures (CRC-ACS).

While they're words which might not immediately spell excitement to the average person, advanced composites are one of the crucial components anyone who has travelled in a Boeing 787 Dreamliner can thank for a safe flight.

After all, Prof. Scott said it was thanks to the “significant research and development contributions” of the ACS-A team and their many CRC-ACS collaborators that ultimately led to the “huge Australian success story” of the carbon fibre composites of which jet airliner wing trailing edge components are made from in Fishermans Bend.

“The Boeing 787 design and manufacturing activity at BAA had its genesis basically in the research that we did, and that's all to do with efficient and cost-effective design and manufacture of aerospace components,” Prof. Scott said. “People often take a lot of things for granted; a lot of advanced engineering goes unnoticed. But it's very lightweight, and a very high safety standard is required for something like that.”

But while ACS-A is best known for its aerospace work, that's just the tip of the iceberg when it comes to the application of composite materials in many other essential and fascinating use cases.

While a major part of its work supports the locally-based Defence organisations, it also collaborates with another well-known innovator in Fishermans Bend – Creature Technology – in engineering some of the composites for its

animatronics, such as jaw plates for its giant dinosaurs.

Beyond that, ACS-A has engineered composites for a range of special use products and services, including renewable wave energy devices, hydroelectric turbines, jet packs, tankers, freight train ore wagons and various fire-resistant structures.

Looking ahead, Prof. Scott said the company was now investing in ultra-high temperature composites for application on hypersonic vehicles associated with use in space and at high altitudes.

“I think it's really exciting,” he said. “This is something which Australia has not really had much engagement in for a very long time, and I say very long time because it's associated with space and very fast vehicles flying through the atmosphere.”

“They get extremely hot, and you need a completely different class of composite material for that, so we're investing in that infrastructure and working with another important Lorimer St organisation – the Defence Science and Technology Group.”

While many organisations might possess the in-house engineering skills capable of completing less technical jobs, Prof. Scott said ACS-A came in when a client had particularly “unusual” or “special” requirements.

Working through each of these requirements hand-in-hand with the client from start to finish on design and engineering right through to simulation and testing, and in recent years, expanding its services to do “specialised, high-value manufacturing”, Prof. Scott said the company was anything but a “build-to-print producer”.

“It all starts with engineering design and analysis, selecting the right fibres and matrix materials, and then simulating that,” he said. “So, we do a tremendous amount of advanced computer simulation of the design, the operation and, of course, the manufacturing processes necessary to get things right the first time.”

“Then that moves on to quite often physical testing of components right through to demonstrating the technology, building a prototype, doing certification testing and then delivering – that's been our traditional business model.”

“But what's new for us is that in the past few years, basically as a result of a customer requirement, they wanted us to actually continue with the serial manufacturing ourselves, and so we're now actually expanding.”

“If somebody has a mass production requirement, we'll team them up with an appropriate Australian business to take that into longer-term production, but if it's something that's specialised then we actually manufacture and deliver the products ourselves.”

“We're really happy about that transition because it means we see everything right from concept through to delivery and in-service operation.”

At the core of this small business is a leadership team consisting of many of the key people who started developing its capabilities in

advanced composites 30 years ago through the CRC-ACS; an organisation Prof. Scott worked in from 1991 and led as CEO from 2003.

ACS-A today employs a dedicated and specialist team of around 30 staff with a rich mix of engineering, technical, management, marketing and communications qualifications, all of whom Prof. Scott said were driven by the “incredibly interesting work that we do”.

“There's quite a range of experience, but the whole thing is underpinned by a wealth of intellectual property and capability that's been built up over those 30 years and we're the custodians of what was developed from those early days in the CRC-ACS.”

“A lot of our senior staff have PhDs so they're highly specialist and experienced as well. A lot of them don't even mention that by the way; part of the pride of being an engineer is being understated about it.”

“There's tremendous diversity [within the team]. That's really what makes it so successful.”

With his blend of knowledge, experience and passion for innovation and Fishermans Bend, Prof. Scott is as excited as anyone for what the future of the precinct holds as the University of Melbourne prepares to open its new engineering campus in the coming years.

He said encouraging the next generation of scientists and engineers by co-locating research and development in the area would be “really critical for Australian manufacturing”, describing it as a “huge opportunity”.

And as for the future of mobility in Fishermans Bend, he said the area's aerospace history should continue to be celebrated and reimagined in new and meaningful ways ...

“The vision of it really is there for us. I certainly hope that the state government and the local councils and whoever else can recognise that. And, what makes it even better, at least for somebody like me, is its incredible aerospace heritage,” he said. “As long as it's developed properly, it's accessible, and you can get there by public transport, bicycle, car or even looking to the future with urban air mobility, which is an exciting area for us, and for the world.”

“We should bear that in mind in the planning as well. I mean, just imagine if there's an appropriate facility there for people to come in and out from wherever, connecting with major airports or other hubs.”

“The future of the Australian aerospace industry depends to a large degree on the organisations here in Fishermans Bend. Developing these will not only strengthen our impact on the world today, but enable us to tackle the challenges of tomorrow, such as national security, clean aviation and many other exciting high technology areas.” ●

For more information:
acs.com.au

AUSTRALIA'S MAJOR SMALL BUSINESS EVENT

CommBank Small Business Expo 2023

Sponsored by  Commonwealth Bank

Organised by  ABF GROUP |  ABF Events

 Wed 24th - Thu 25th May 2023

 Victory Room, Marvel Stadium, Docklands, Melbourne.

Get your **Free Ticket** to access to 2-day major business events of

CommBank **Small Business Expo** | CommBank **SmallBiz Sessions**

Scan for more info





Explore Melbourne by Bike

WORDS BY *Shervin Nasiri*
BUSINESS

Local tour company Melbourne by Bike's famous city tours provide the fastest and most enjoyable way to explore the best of our city, and it now takes off from its new base in Docklands.

Located just off Harbour Esplanade at Waterview Walk along Melbourne's Free Tram Zone, Melbourne by Bike offers daily bicycle tours of the city from 10am, which typically take around four-and-a-half hours.

The company, which has been operating in Melbourne since 2002, has a fleet of light 21-speed bikes that allow people of all ages to tour the city with ease.

Founder and owner of Melbourne by Bike Murray Johnson has been guiding bike tours around Melbourne for 20 years. He's a former journalist and Rotary exchange student who loves travel, golf, snow, and water skiing. He is also one of the company's five tour guides.

"The bike tour is the perfect way to start your visit and make most of your time here," Mr Johnson told *Docklands News*.

"You won't just see Melbourne on bike, you'll understand it. We don't just scratch or smell it from the window."

During the 25-kilometre bike ride along the

Yarra River, an experienced local guide shares the history of our city while participants get to experience Melbourne's cafe culture, best bars, restaurants, Arts Precinct, famous gardens and the Melbourne Cricket Ground (MCG) along the way.

"You don't need to worry about finding where to go or look on a map, you can just relax and flow with your bike and enjoy the fresh air," Mr Johnson said, adding that his personal favourite aspect of the tour was a group lunch at Queen Victoria Market (QVM).

With so much of our city to take in, Mr Johnson recommended that tourists take the bicycle tour on their first day as a great way of settling into life in Melbourne.

"That's because we'll show you so many great places to shop, take photos, hang-out, eat, drink and explore that you'll need as much time as possible to get back and enjoy it all," he said.

Tours are priced from \$120, and if you want to pedal less, you can upgrade to an electric bike for \$40. ●

For more information:
melbournebybike.com

A new BITO to open across the harbour

WORDS BY *Rhonda Dredge*
BUSINESS

When a government department shifts to a new building the local economy suffers and so do the employees who have to find a new source of coffee.

In March the Australian Border Force (ABF) moved from their home at 1010 La Trobe St across the water to Bourke St.

For local café BITO, just around the corner from their old office, it represented a big drop in business.

"We lost a third of our customers overnight," café owner Brian Tung said.

Brian took a leap and secured a lease in ABF's new building at 808 Bourke St, a move that will live up to the waterfront.

"I was so lucky," he said. "I saw a for lease sign in the window and acted."

He estimated there were around 1000 Border Force employees plus other public servants in the building.

The area is a hive of activity and many already know the BITO brand.

"I love their coffee," one ABF employee told *Docklands News*. "The coffee around here is inconsistent." ●

She might work in law enforcement but she's a resident of Brunswick and a connoisseur of good coffee and niche places.

"The trouble around here is that the cafes are all generic. BITO is niche," she said. A good story needs to be told and there aren't that many businesses that have a profile before they even open the door.

Brian considers himself a coffee expert. He set up a coffee roasting business 10 years ago and he was in the top 10 in latte art in the 2019 Australian competitions.

"Everyone said 'don't open a café in Docklands,'" he said, but Brian fell in love with the setting at Digital Harbour. He loves the water which reminds him of Taiwan.

"This was just an office three years ago. The windows were dark, and people couldn't see in."

At its peak last year, BITO had 400 customers a day, staff knew all of their orders and the queue was long.

"Some customers came in two or three times," Brian said. "The staff knew everyone. The customer service was good. That's the secret."

His second BITO, with a prime waterfront position facing north, will open at the end of May with free coffees and bring some life to a section of the waterfront that has been empty for several years. ●



Shop 24/45 Collins St Melbourne, 3000 | 03 9967 6695 | perricutten.com.au | @perricutten

CHAMBER UPDATE

Exciting news for Docklands

The City of Melbourne has announced its newest major event, the Now or Never festival, which is expected to attract more than 200,000 people to the city from Thursday, August 17 to Saturday, September 2.

WORDS BY *Daniel Hibberd*
PRESIDENT - DOCKLANDS CHAMBER OF COMMERCE

With the Docklands precinct poised to play a major role in the festival as the location of the opening act, this is going to be a big one.

The festival is designed to invite curiosity and wonder and explore the intersection of art, ideas, sound, and technology in iconic venues across the city, bringing together a mix of local and internationally renowned talent.

With Docklands being a hub for local and international businesses, including providing new opportunities for entrepreneurs and start-ups, this will be the perfect fit to showcase our beloved harbour precinct.

This event and more are set to attract increasing numbers of visitors to Docklands, providing positive economic impact to the precinct, which is likely to continue to grow and highlights the importance of upcoming events to hit our backyard.

This year we will see the return of the Melbourne Boat Show, the biggest ever Firelight Festival, cultural events such as the Diwali Festival and even a custom car show. If you are a local business looking to leverage on these events, please reach out to the Docklands

Chamber of Commerce (DCC) to find out how you can optimise your business to take full advantage.

A local business to be celebrated this month is Berth on NewQuay Promenade, which is putting on its Biggest Morning Tea on May 25 for a 10th consecutive year to support the annual fundraising event organised by Cancer Council Australia.

Berth will be doing its bit by hosting its event, providing a platform for people to come together and support each other, creating a sense of community and togetherness; particularly for those affected by cancer.

If you are interested in being involved in an initiative that has raised more than \$200 million since its inception in 1994, which funds crucial research into cancer treatments and prevention programs, please contact the Berth team.

The DCC is also pleased to announce Sarah Maguire as its new executive officer.

We wish to extend a very warm welcome to Sarah who brings a wealth of experience to the role, having previously served in similar positions in several prominent business organisations. Sarah's appointment is a significant development for the DCC, as she is expected to play a pivotal role in shaping the future direction of our team and business community by promoting the interests of our members.

With her extensive knowledge of the business landscape and her passion for supporting local businesses, Sarah is poised to make a positive impact on the Docklands precinct and its wider community. ●

For more information:
docklandsc.com.au

MAKING MOVES

Implement these automation tools today and boost your business efficiency

The past year has brought a great deal of change to the way in which we conduct business. A large degree of this can be attributed to the rise of automation and artificial intelligence.

WORDS BY *Mo Hamdouna*

These technologies are no longer reserved for large corporations or tech companies, they have become accessible to businesses of all sizes and industries.

You may think that your business is not applicable to these technologies or that they are too complex to implement, but I'm here to tell you that is not the case. Automation is there to give your business a helping hand in many aspects, from streamlining processes to enhancing your customer experience.

By now I'm sure you've heard the buzz around ChatGPT, but have you given it a try yet? This tool is like having a personal assistant that can generate ideas, answer questions, and provide human-sounding results at your service.

The days of staring at a blank page and waiting for that lightbulb moment are over! ChatGPT will work better for you if you provide a more specific prompt. For example, if you want to draft an email to promote your new product, provide the bot with the details ...

What business are you in? What tone of voice would you like the content in? How long should the content be? You can even ask ChatGPT to use dot points, headings, emojis and more in the output.

ChatGPT is the best way to automate idea generation for content creation, draft content to suit your needs and save you hours of time searching the web for the answer to your question. You can even install the chrome extension, *Enhanced ChatGPT*, to enable web search when answering your prompts.

We could go on all day about more ways you can use ChatGPT to maximise your efficiency, but the key takeaways are that it allows you to generate ideas almost at the click of a button and in a format that is simple to understand, which you can easily work alongside when conducting your daily activities.

Another favourite AI tool that has transformed our operational efficiency is Waalaxy. This tool will save you considerable time in your outreach strategy with its ability to automate personalised messages, invitations, follow-ups and more to any list of prospects. With 80 per cent of B2B leads generated on social media coming from LinkedIn, having an automated leads strategy in place is a no-brainer.

Waalaxy allows you to import contacts from either LinkedIn or a file and provides you with the ability to set up message flows for each segment of your prospects. There is a wealth of other tools out there to help get you started on your automation journey – these are just some of our favourites.

By implementing these tools in your business, you can improve your teams' efficiency and productivity, improve customer experience, and improve customer churn through more regular, targeted, and personalised contact. ●

For more information:
moworks.com.au



DOCKLANDS HEALTH

SERVICES AVAILABLE:

- ▶ Physiotherapy
- ▶ Chiropractic
- ▶ Massage
- ▶ Psychology
- ▶ Nutrition
- ▶ Bowen Therapy
- ▶ Pilates
- ▶ Kinesiology
- ▶ Exercise Rehabilitation

Shop 4/860 Collins St, Docklands, 3008
(03) 9088 3228 www.docklandshealth.com.au

BOOK ONLINE
DOCKLANDSHEALTH.COM.AU



Rothwell Lawyers
Ph: 03 9329 3500

Suite 1518, 401 Docklands Drive,
DOCKLANDS VIC 3008

Tel: (03) 9329 3500
Mob: 0447 449 779
W: www.rothlaw.com.au

At Rothwell Lawyers we deliver exceptional legal advice, and always focus on achieving the best outcome for our clients.

AREAS OF PRACTICE

- Business Structuring
- Commercial Law Issues
- Conveyancing
- Debt Recovery and Alternative Dispute Resolution
- Family Law
- Insolvency Advice
- IVOs
- Wills, Estates and Probate

DENTIST

BOOK NOW ONLINE
docklandsdentalstudio.com.au

ACCREDITED

Now Accepting zip Money
a better way to pay

Zoom! Teeth Whitening
Now Available

invisalign
The Clear Alternative to Braces

Start from just \$12 a day

Our Dentists:

Dr Pia Oparkcharoen **Dr Cindy Liang**
Dr Aisling Cromie

Services:
Check-ups (exam, scale and clean, X-Ray); children's dentistry; teeth whitening; dental implants; root canal treatment; crown, bridge, veneer; dentures.

Mon-Fri 8:30-5pm (Thurs until 6pm) Sat: 9am-1pm
57 Merchant St, Docklands (opposite Victoria Harbour Medical Centre)
www.docklandsdentalstudio.com.au - ph 9021 9487 mob 0488 799 487



Dorsett opens its first Melbourne hotel

Renowned international hotel brand, Dorsett Hotels, has marked another step into the Australian market with the opening of Dorsett Melbourne.

WORDS BY Jack Hayes

Located at 615 Little Lonsdale St at the western end of the CBD, Dorsett Melbourne is a key component of West Side Place, a \$2.4b development by Far East Consortium.

With a combination of residential apartments, accommodation and retail space, West Side Place precinct has added a vibrance to the heart of the CBD by attracting both local Melbournians and travellers alike.

According to Dorsett Hospitality International, Australian CEO Andrew Jessop, "Dorsett Hospitality International is proud to be opening a new hotel in Australia's cultural capital". "Off the back of the success of our first Australian opening on the Gold Coast, it was a natural next step to look towards Melbourne which has seen an incredible bounce back in tourism since COVID-19," he said.

"We look forward to continuing to grow our global footprint and to add to the Melbourne community."

Dorsett Melbourne comprises 316 guest rooms over eight levels, designed by award-winning architect Cottee Parker.

Rooms and suites include pet-friendly rooms for that "perfect" getaway and family rooms where the littlest guests can have their own memorable moment in a themed room.

Dorsett Melbourne's general manager Natalie Bussenschutt said, "we are delighted to welcome Dorsett Melbourne, the second Dorsett hotel into Australia, expanding the brand's global footprint."

"At Dorsett Melbourne, our guests will enjoy our intuitively designed social spaces, the Club Lounge, and beautifully appointed guest rooms and suites, including pet-friendly and family rooms," Ms Bussenschutt said.

"Our caring and vibrant team look forward to welcoming you and sharing our local

knowledge for an authentic Melbourne experience complimented by a memorable hotel stay."

The Dorsett Melbourne Club Lounge is an exclusive area where guests can work, dine, or relax with signature amenities included, such as private check-in/out, two hours of complimentary meeting space, and a pressing service, along with food and beverage service throughout the day and evening.

Modern conference rooms are suitably matched for small- to medium-sized events; each featuring natural light with the latest in technology to meet the changing needs of meetings including hybrid connections.

Executive chef Julio Martinez of Dining Concepts has designed an array of delectable menus across Dorsett Melbourne's food and beverage facilities. Mr Martinez has designed all menus with sustainability front of mind, specialising in local ingredients from Victoria.

Port Bistro offers breakfast daily, with a sumptuous seafood menu available for dinner on select evenings from May.

Port Bistro also offers a private dining space for special occasions in addition to outdoor dining.

Jin Bar offers a relaxed ambience to enjoy a signature cocktail with a tailored menu that celebrates the historical gold rush of Victoria with Jin translating to "gold" in Mandarin.

The Lobby Lounge is perfect for a cheeky pre-dinner drink before heading out to explore Melbourne, or for a nightcap before sliding into Dorsett Melbourne's comfortable Sealy beds for a blissful night's sleep.

All Dorsett Hotels are proud to incorporate five key attributes that are adapted to each new hotel site. They include city convenience, social connectivity, priceless guest delights, active wellness, and creating a positive impact on the local community.

Hotel amenities include an indoor heated pool, complete with a day-bed area, spa, sauna, steam room, wellness room, and a gymnasium with the latest in Techno-Gym equipment. ●

For more information:
dorsetthotels.com/dorsett-melbourne

CommVision: Increasing communication in residential buildings and communities

If you live in the City of Melbourne, it's more than likely that you're one of the 80 per cent who live in a high-rise apartment. But how well are you currently notified of critical issues and important updates affecting your immediate community?

WORDS BY Sean Car

While mailbox drops and printed notices in the foyer are among the most common methods in which strata communities are kept up to speed by their owners' corporation (OC) and building managers, these measures lack immediacy and are too often prone to be missed, as well as not being environmentally friendly.

In today's ever-evolving technological landscape, these measures have become increasingly antiquated in the face of fast and permanent communications solutions.

Despite many other developed countries around the world adopting this sort of sustainable technology in high-rise settings for many years, Australia has yet to fully embrace these simple, efficient, and cost-effective solutions, particularly in residential buildings. That is, perhaps, until now ...

Having dedicated much of his career to the body corporate sector in Australia and overseas, Alex L. Smith founded CommVision in 2014 with a simple mission in mind; to utilise today's technology in ensuring residents are kept fully informed (in real time) of everything that's going on in their building, and local community.

How? Through the provision of digital signage, media screens (digital noticeboards) installed in lifts, lobbies mailrooms, or any other common area.

Through a centralised, fully integrated operating system, an OC and/or building manager is able to remotely share updates concerning everything from meetings, cleaning and maintenance to police, local council, news and weather instantaneously throughout the building.

With lift screens starting from as little as \$59 per month (with advertising) and \$123 per month (without advertising), Mr Smith told *Docklands News* OCs now had the opportunity to evolve and make the transition to technology without breaking the bank.

"The technology was created to increase awareness and communication in residential and mixed-use developments to ensure that residents in these buildings are being provided up-to-date information at all times by those that are managing the site," Mr Smith said.

"The Australian market is very behind with



technology. We haven't adapted as quickly as other countries in terms of where we use this technology which ultimately makes us more efficient in our overall day-to-day operations."

Having originally become involved with the technology while working on large-scale developments in Dubai, Mr Smith has since trialled and tested software from a range of the world's leading signage companies.

The company partnered with Canada's fastest growing indoor OOH media network, UB Media, which has enabled CommVision to increase its offering to provide touch screen ability in lifts, together with a bespoke management portal which enables managers to curate professional notices and schedule them in advance.

With some OCs resistant to advertising material in the buildings, CommVision has importantly split the content being published on the screens, which prevents important building notices from being overlaid with advertisements. It also offers two separate price structures (with and without advertising) which include the operating system, technical/customer support, insurances and warranty.

While the business model is focused strongly on community and not solely on advertising like its competition, Mr Smith said that being first to market had enabled the company to curate the best service offering available in the market, to suit the building and benefit its residents.

"I think the big ticket here is that committee members need to be open minded when it comes to advertising – it's a word that people are scared of, but we should be calling it promotions; promoting local and national businesses, as ultimately it's supporting and helping the community they live in," he said.

"If a building doesn't want advertising, we can facilitate that. But the focus should be more about providing a seamless communication platform that increases awareness in buildings at an affordable price, while at the same time promoting its local community." ●

For more information:
commvision.com.au

Proudly representing the community in Docklands



Evan
MULHOLLAND MP
 MEMBER FOR NORTHERN METROPOLITAN REGION

Unit 10, 2 Graystone Court Epping Vic 3076
 03 9651 8242 | evan.mulholland@parliament.vic.gov.au
EvanMulholland.com.au | [EvanMulhollandMP](https://www.facebook.com/EvanMulhollandMP)
 @evmulholland



Opportunities for the Docklands precinct



There is plenty of maritime opportunities on offer for maritime enthusiasts in the Docklands Precinct in May – and all of it free!



The Melbourne Maritime Heritage Network (MMHN) encourages all Docklands residents to enjoy these events bringing along the maritime enthusiasts of the future – their children!

Wednesday, May 3, 5pm to 7 pm: Viking Ships in Melbourne - Indeed!

Erik Thorup will discuss the interest around the world including Melbourne in replicating Viking vessels and will present images of a recent Viking ship launch in Port Phillip Bay. No need to register, simply arrive. Location: Magnet Gallery, The District, Docklands (86 Bourke St tram to end of the line).

Saturday, May 6, 10am to 12pm: Ship-Spotting: The Bay and Beyond

The venerable global institution, World Ship Society, founded by a small group of dedicated ship enthusiasts in 1946, has since grown into the largest and most prestigious international organisation dedicated to maritime and naval history. This is an opportunity to gain fascinating insight into the compelling pastime of “ship-spotting” and gain knowledge about the vessels regularly seen plying our waters. Free event, but please register via email: info@mmhn.org.au

Location: Port Education Centre, 343-383 Lorimer St, Port Melbourne.

Thursday, May 11, 5pm to 7pm: Wreck Diving in the Bay: Wonder in the deep

A fascinating presentation of the wreck riches around Port Phillip Bay by senior archaeologist for Heritage Victoria, Danielle Wilkinson. No need to register, simply arrive.

Location: City of Melbourne, Waterways Office, Suite 120, 439 Docklands Drive, (86 Bourke St tram – end of the line)

Wednesday, May 17, 5pm to 7pm: Melbourne’s Spencer St Bridge – Remarkable maritime infrastructure story.

Led by historian, author and librarian Fiona Campbell. Free event, no need to register, simply arrive.

Location: Magnet Gallery, The District Centre, Docklands (86 Bourke St tram).

Greenline – what is in a “name”? Lots.

Let’s be clear – MMHN staunchly supports the City of Melbourne Greenline Trail project.

Like other Docklands Precinct stakeholders, MMHN was pleased to respond to a recent invitation to participate in further Greenline Project design consultations at the Docklands Community Centre looking at multiple images of the evolving design.

Regrettably, the images presented once again revealed only a minimal grasp of the significance and value of maritime heritage.

For example, the council persists in erroneously designating specific sections of Greenline as “Maritime” and “Salt Water”.

Firstly “Maritime” trade and operations dominated both riverbanks along the entire Birrarung-Yarra River from Birrarung to the Bay. Maritime heritage was not confined to a specific section of Greenline. The river actually enabled Melbourne’s prosperity along its length.

Secondly, inaccuracy also occurs in relation to the section designated “Salt Water”, which is not, and never was, salt water. This section is part of the Birrarung-Yarra River tidal estuary, which was re-configured so successfully by Coode and Brady.

Even more bewildering – this unique section of great heritage significance, a world-renowned marvel of civil engineering (North Wharf and Victoria Harbour is actually not acknowledged in the current Greenline design).

Another bewildering example is that the park at the tip of north wharf is designated “Eco” Park. This is lazy, generic marketing speak. The name of the park should rightly reflect the engineering brilliance of Sir John Coode and Joseph Brady central to the existence of North Wharf and Victoria Harbour. Scan below:



▲ The remaining posters on Central Pier.

Central Pier – salvage

In response to maritime stakeholder concerns, MMHN contacted Development Victoria (DV) for confirmation that the demolition contractor for Central Pier has been directed to retrieve the large posters and to salvage the bollards at the wharf edges of Central Pier.

The condition of these posters is generally quite poor and the retrieval may render the posters beyond re-use. As a precaution, DV has taken high-resolution photos of the most legible posters, and this will enable them to be reprinted or reinterpreted in a different format or way.

DV reminds us that the Central Pier Demolition Permit (P37012) calls for a Salvageable Materials Report to be issued by DV to Heritage Victoria to record what, if any, materials were able to be salvaged once the demolition is completed. ●

MMHN argues “names” used along Greenline actually matter – a lot. Place “names” serve to raise public awareness and, in a sense, educate. The City of Melbourne has a responsibility, as well an opportunity, to properly “name” sections of Greenline so as to accurately reflect cultural and maritime history.

MMHN applauds the environmental and ecological commitment embedded in the current Greenline design but strongly argues that celebrating these aspects of the Birrarung-Yarra River story should not require devaluing the significance of Melbourne’s marvellous maritime heritage.

We encourage all Docklands Precinct idents top have their say on the evolving Greenline Master Plan ...

For more information:
participate.melbourne.vic.gov.au/greenline-project



Jackie Watts
CHAIR OF MELBOURNE MARITIME HERITAGE NETWORK
JACKIEWATTS@NETSPACE.NET.AU

INCREASE COMMUNICATION IN YOUR OC

CommVision provides a sustainable and seamless way for Managers, Council, Police and the local community to communicate with Residents.

By installing media screens in lifts and lobbies, our platform will upgrade your building and keep your Residents fully informed of:

- Important building notices;
- Community events;
- Latest news;
- Local deals.

Our touchscreens provide a fully interactive experience and are complimented with a bespoke Residential Managers portal that delivers pre-made templates for the Manager to design and schedule notices in advance. Our operating system is cloud based, enabling Management to remotely update notices seamlessly at any time of the day.

Empower your Manager today and contact our team on info@commvision.com.au **03 9863 7552** to find out how you can upgrade your building.

Warm Regards,
Your friendly neighbourhood Communication Platform Provider

COMMVISION

CommVision.com.au

WE LIVE HERE

Built to rent and ruin

An inner-city apartment resident has written to We Live Here with a horror story of dealing with “visiting drunks lacking self-awareness” in a neighbouring property.

The story has its genesis in a decade-old example of bipartisan government ineptitude, as our correspondent writes:

“Our neighbour is the gargantuan 175-unit ‘EVO Apartments’ that was built under an ill-star. Before the block was occupied, it was compulsorily acquired by the state government in 2014 to make way for the aborted East-West Link. After nearly a decade in limbo, the building was sold by the government as a build-to-rent investment to a funds management group – at a 30 per cent loss.”

“The worst aspect is the short-stay factor. We face constant parties with late-night revellers drinking and screaming in their communal swimming pool with loud music or emerging onto balconies after returning from nightclubs at 2 or 3am and bellowing into the night. In the absence of long-term residents, there is no self-policing of this property.”

This resident’s story should be a warning to the government about the regulations so desperately needed to manage the “built-to-rent” trend.

We Live Here has been trying to engage with the government and opposition parties to address the lack of affordable housing, while short-term letting goes unchecked. We have tried for more than six years to get the Victorian Government to take positive action; it is an embarrassment that for platforms like Airbnb, Melbourne is the most penetrated market in the world.

Will Melbourne City Council step up?

Pre-COVID, former councillor Dr Jackie Watts proposed a motion to the City of Melbourne to classify short-term accommodation as a change of use requiring a planning permit. The motion failed to gain adequate backing. Can we expect more support from the council now?

We Live Here is tempted to be sanguine because Deputy Lord Mayor of Melbourne, Cr Reece is well known for supporting homeless people and this month wrote an opinion piece bemoaning that “rents are soaring due to a lack of supply in the private market”; Cr Leppert’s Greens party recently made a major policy announcement on regulating short stays.

If We Live Here learns of any plans by the council, we will be sure to let our readers know.

Out of business and out of luck

Nerida Pohl, stalwart residents’ rights champion, has reported that her building’s manager has ceased trading with debts of many millions. Our intrepid correspondent believes a financial investigation is warranted.

Regular readers will recall our coverage of the seven-year battle against the arrogation of the lobby and loading dock by the commercial interests.

We Live Here will monitor this case closely because it is an exemplar both of the chicanery permitted under the flawed *Owners’ Corporation Act* and the power of residents standing up to the cupidity of developers. We celebrate Nerida’s win – this building now has a democratically elected committee of residents rather than proxy-backed appointees. ●



OWNERS’ CORPORATION LAW

Lot owners should choose wisely and seek advice before filing VCAT proceedings

There has been a sharp rise in the volume of cases filed in VCAT by lot owners against owners’ corporations (OCs) and managers.

The increase in the volume of cases is partly explained by the COVID-19 lockdowns, which required most Victorians to work from home over the past two winters. There has been a great deal of frustration from lot owners and occupiers about the response time of managers and from OCs in responding to lot owners’ queries and follow-ups for maintenance requests, inspections, levy enquiries and the like.

However, what is more apparent in reading some of the latest judgments coming out of VCAT is that a number of litigants are seriously fed up with the quality of service they have been receiving from managers, and are seriously fed up with the lack of response/compassion from managers and committee members. This has prompted a large influx of applications to VCAT, and these cases are clogging up the case-load management of Victoria’s largest tribunal.

If I can offer some timely advice to owners and occupiers before any more VCAT proceedings are filed, please take heed of the following

... OC levies and fees do need to be paid on time. If these fees can not immediately be paid, the lot owner needs to agree a payment plan with the OC. It is not appropriate to apply some form

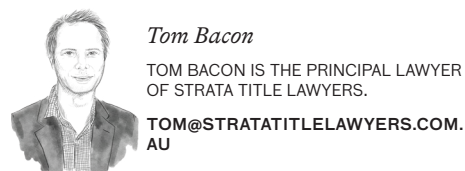
of “set-off” for a perceived claim against the OC for property repairs or maintenance.

All that will happen is that the matter will most likely end up in VCAT if the OC brings fee recovery proceedings, and interest, filing fees, administration fees and legal fees will be added to the costs that will be found to be payable.

If a lot owner has a serious claim against the OC for some other perceived slight or injury, this will always require a cross-claim which will be decided separately. There will be no set off applied, so a lot owner will always be saddled with the interest and other fees described above.

Furthermore, litigants do not have a right to bring proceedings against managers of the OC (aside from very limited rights prescribed under the *Owners Corporation Act*). This is because there is no contractual agreement between a lot owner and a manager. The manager’s contract of appointment is a contract between the OC and a manager.

Accordingly, there is no basis on which a lot owner can seek compensation or damages for breach of the contract between an OC and its manager. Good advice taken from a specialist lawyer in OC law should be sought before potentially expensive mistakes are made by unrepresented litigants. ●



STATE MP



▲ State MP for Melbourne, Ellen Sandell, meeting parents outside Docklands Primary School.

We need a long-term vision for Docklands Primary School

Docklands Primary School is a great school but it was full almost as soon as it was built.

You may have heard that the Victorian Labor Government is planning to “fix” this by cramming hundreds of students into a small shop-front down the road from the school.

This brings with it a long list of problems, such as the space being too small, kids having to enter and exit the space through a public shopping centre, there being no space for play, lunch, or specialist subjects, school staff having to manage transporting kids safely to and from the site with no extra resources, and more.

We need a better solution than this. Our children should have proper spaces to learn and play.

Unfortunately, the state government has a history of poor planning when it comes to our schools. This is another example of the government trying to play catch-up and opting for cheap solutions instead of investing in a long-term plan to ensure all our kids have a good quality public school to go to.

Right now, there are two empty blocks of land right next to Docklands Primary School.

They’re slated to become apartments, but

they could be part of a plan to expand the primary school for the future, and even build a high school – another thing the Docklands community desperately wants and needs. After all, if more apartments are built, where are all the kids who live in them going to go to school?

Unfortunately, the Victorian Labor Government doesn’t seem interested in making this happen or coming up with another long-term solution.

I’ve been working with the school community for a long time, including as part of the push to build Docklands Primary School in the first place.

Since then, I’ve been campaigning for road safety upgrades around the school and now I’m working with the school community to push the state government to come up with a better, long-term solution for Docklands Primary School.

If there is anything I can help you with, please get in touch: office@ellensandell.com ●



Ellen Sandell
STATE MP FOR MELBOURNE
OFFICE@ELLENSANDELL.COM



Melbourne Debt Collectors

Call or email us today on (03) 9329 4455 or admin@melbdebt.com.au.

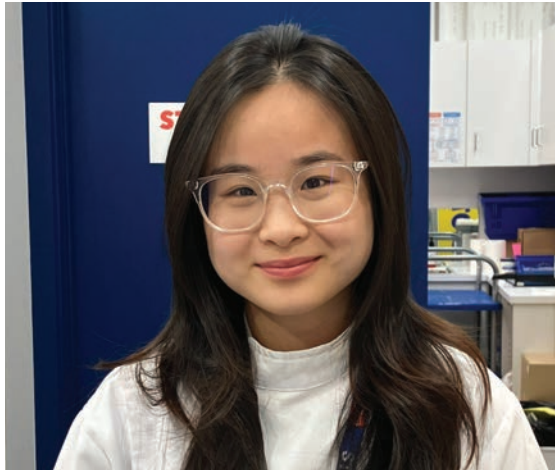
Your Debts Are Our Business

Payment on collection only

Review of your terms and conditions for free when you use our services

Suite 1518, 401 Docklands Drive,
DOCKLANDS VIC 3008

Tel: (03) 9329 4455
Mob: 0447 449 779



EMILY - CHEMIST WAREHOUSE

It's very accessible to get here by public transport. I love the environment here and the customers are very friendly. It feels like everyone in the community is very nice and well connected with each other.



KAI - URBAN ALLEY BREWERY

I like the fact that this area is near the harbour. The convenience of having stores like a chemist and supermarket in the area is also very helpful too.



KANNO - UNIQLO

I like the different customers we get in this area. Whether you are single or in a family, there is a shop for everyone here at Docklands.



ZOE - KATHMANDU

I like the atmosphere of this area, being near the water and the open environment of this shopping centre (The District). There's also great food and coffee places here. ●

Faces of Docklands

Question: What do you like about working in Docklands?

THE MOST EXCLUSIVE ESCORT AGENCY

Paramour

OF COLLINS STREET

CITY CENTRE
Melbourne's exclusive entertainment service.
Highly recommended for our interstate and overseas visitors

- Dinner Companions
- Social Escorts
- Sensual Ladies

VIP

Paramour's **GRAND RE-OPENING**

Be with the best girls in Melbourne give us a call to pre-organise for opening day due to overwhelming demand

CITY CENTRE GIRLS

9654 6011

CBD - 5 MINUTES TO YOUR DOOR
たくさんの美しい女性
日本語を話します

We have survived COVID-19 AND ARE STILL HERE TO HAVE BEAUTIFUL LADIES PRIVATELY TO YOUR DOOR 24/7

DOCKLANDS NEWS

Wish your inbox was more local?

Well we have good news for you!

Scan the QR so you can stay Hyperlocal on the eNews!



HYPERLOCAL NEWS

DOCKLANDER



Amruta Wazalwar

Docklands is simply beautiful



Sometimes, a stunning view makes you stop in your tracks, and you find yourself taking a moment to appreciate the spectacular landscape in front of you.



WORDS BY *Amruta Wazalwar*
DOCKLANDS RESIDENT

Though 2020 was a difficult phase for everyone, it came to me as a joyful pregnancy phase.

With my son "Aarav" born later that year, it was time to move to a bigger space to accommodate our growing family's needs.

Welcome to the 31st floor of our beautiful apartment overlooking the stunning Victoria Harbour and the Bolte Bridge.

The step into the balcony takes you to another world, more precisely towards that amazing sunset.

Doing something that expresses yourself can give you a sense of accomplishment and purpose. It gave me immense satisfaction after I clicked the very first sunset photo from our balcony.

Beautiful, everchanging sunsets made me pursue photography as a hobby during COVID times.

Every evening's sunset was my "go-to place" when the COVID world around me was stagnant. There is never the same sunset ever, and nor is there ever the same sunrise hue.

To date, I have managed to take more than 300 sunset photos and more than 100 daytime photos with my iPhone, and many of them have been featured in the weather section of Channel 7 news.

Docklands, day or night, is absolutely



stunning to the eye! Its magnificent, modern, and innovative designs stand honoured as you take in the views.

Our Mother Nature is simply wonderful. "In every walk with nature, one receives far more than he seeks."

Whenever you can see an amazing sunrise or a mesmerising sunset, stop ... take a pause to look, and soak in this marvel.

"An understanding of the natural world is a source of not only great curiosity, but great fulfilment" – Sir David Attenborough. ●

HEALTH AND WELLBEING

Are you tired of headaches holding you back?

Migraine and tension-type headaches are the most prevalent headache disorders, both with disabling potential having the greatest impact on public health.

More than seven million Australians suffer from debilitating tension headaches and more than 4.9 million suffer chronic migraines.

In 2023, Docklands Health wants the focus of Spinal Health Week to be on alleviating headache pain so sufferers can take back control of their health and wellbeing.

And, although pain medications (prescription and over the counter) may provide temporary relief from headache, it's often a "Band-Aid" solution that treats the symptoms but not the cause.

The connection between spinal health conditions (especially of the neck) and headaches are well recognised in research.

It's vital that headache sufferers have their spine examined and, if appropriate, seek early, effective drug-free chiropractic care. Studies

have shown that university trained chiropractors provide reliable, low risk, effective treatment for the three most common types of headaches; tension headaches, cervicogenic (neck-related) headaches and migraines.

Along with some simple lifestyle changes, this can go a long way to relieve pain, reduce the incidence of headaches and migraines.

They may relate to a result of a wide range of activities including poor posture; physical activities; eye strain; dehydration; caffeine withdrawal; smoking and bright or noisy environments.

Spinal manipulation of the neck and mid back is more effective than mobilisation and exercise in reducing cervicogenic headaches, another study found chiropractic adjustments reduced migraines in 72 per cent of people surveyed and decreased their duration and severity.

At Docklands Health you can have a spinal health assessment to see if there may be underlying tension causing frequent headaches. A chiropractic adjustment is a simple and effective drug-free option that can remove the root cause of these headaches.

So, if you or someone you know is among the 11.9 million Australians suffering from headaches or migraines, make an appointment so you can take back control of your life. ●

SPINAL HEALTH WEEK 22-28 MAY 2023

TIRED OF HEADACHES HOLDING YOU BACK? CONSULT A CHIRO




Download a free headache factsheet by visiting: docklandshealth.com.au/SHW



Dr Mike Edgley
CHIROPRACTOR
DOCKLANDSHEALTH.COM.AU

DOCKLANDS REPRESENTATIVE GROUP

Big Build's veloway to Docklands

Most Docklanders would be more than aware of the plethora of major roadworks surrounding our neighbourhood – the “periodic/intermittent” road closures of Wurundjeri Way and the Footscray Rd “disruptions”.

WORDS BY Docklands Representative Group
DOCKLANDS.ORG.AU



▲ A render of the veloway over Footscray Rd.

These works have seen heavy vehicles diverted onto Harbour Esplanade, with more than a few close calls on the pedestrian crossings. Also, the return of Marvel Stadium events has seen gridlock in nearby streets as drivers seek to navigate the various diversions and closures.

But, fingers crossed, these are temporary disruptions, which will dissipate when road works are completed.

However, what will change for Docklands in terms of increased traffic volume concerns two-wheel traffic.

This is because Victoria's Big Build, specifically the West Gate Tunnel Project, includes a new veloway (a dedicated bikeway) which ends in Docklands.

According to the Victorian Government, the project will build a new 2.5km elevated veloway on Footscray Rd, creating an express journey for cyclists to and from the city completely separated from traffic with two emergency exits – “giving cyclists a safe express route to and from the city ...”



At the end of this new veloway, cyclists will enter Docklands' popular Capital City Trail, which pre-COVID already boasted daily morning traffic (between 7am and 9am) of around

2000 riders. According to *Bicycle Network*, when the new infrastructure goes in, those numbers are expected to scale up considerably.

However, what may not have been factored into traffic projections is the growth in eBike usage and the legalisation of e-scooters, meaning that the Docklands' Capital City Trail (along Harbour Esplanade) may see an explosion of two-wheeled traffic.

What is of concern regarding this growth in two-wheel traffic is that riders, (especially delivery e-bikes and e-scooters) will not “stay in their lane”, and use footpaths as their preferred route. Case in point is the footpath outside Marvel Stadium, which sees e-scooters and delivery e-bikes routinely use this path as a thoroughfare, despite the illegality of this use of footpaths.

Arguably more challenging are the notorious Docklands shared zones, where signs proclaim “pedestrian priority”, but in reality see pedestrians increasingly lacking confidence when utilising these zones.

The Docklands Representative Group understands that beautification works are planned for Harbour Esplanade, as this was a stated action from the Docklands Summit. These beautification works also offer an opportunity to design in elements that encourage separation between pedestrians and bikes, e-bikes and e-scooters, as these groups also dislike pedestrians in their lanes! ●

MISSION TO SEAFARERS



Mission to Seafarers Victoria is calling out for volunteers to meet the needs of seafarers

The Mission to Seafarers Victoria (MtSV), which has been caring for the welfare of seafarers in Melbourne since 1857 in the heart of Docklands, is putting the call out for volunteers to help meet the welfare needs of seafarers.

WORDS BY Neil James
CEO - MISSION TO SEAFARERS

One of the key services we offer, that is highly valued by the seafarers, is transport to and from the docks and the city. This service is offered seven days a week – day and evening all year round – and allows the seafarers for a short time to escape the noise, routine and confines of ship life to do some personal shopping or just

explore the city. The break from ship life has a big impact on their wellbeing.

To meet the needs of the seafarers for this service we rely on volunteers to drive our minibus. The minibus can be driven with a standard vehicle driver's licence.

We currently need more volunteers to help us meet the needs of the seafarers that bring in more than 90 per cent of all goods we consume and keep our economy running. Each day 56 tonnes of coffee come into Melbourne by ship along, with 314 shipping containers of furniture, 211 containers of household appliances, 139 containers of clothing and 29 shipping containers of beer.

We understand volunteers are busy people. Our volunteer program is flexible so they can help out when they have the capacity to do so.

The Mission to Seafarers Victoria is located at 717 Flinders St, Docklands, and is open seven days a week.

We urgently need drivers that will pick up seafarers and take them between the city and the docks. To learn more visit: missiontoseafarers.com.au/volunteers or call 03 9629 7083. ●

CRITIC

Getting a lift

The Downtown gallery at Deakin University's city campus has closed, a disappointing development in the local art scene.

WORDS BY Rhonda Dredge

The gallery was a unique experiment in on the 12th floor of Tower Two at Collins Square.

The space has been repurposed, according to university staff.

A few carved forms are scattered around the foyer but no new exhibitions are planned.

This is a blow to Docklanders seeking the kind of intelligent analysis of the culture that well-run galleries provide.

Memorable among the gallery's exhibitions was one dedicated to Alfred Deakin which included some political cartoons that lampooned the former Prime Minister.



Another brought the paintings of Indigenous prisoners into the city for exposure, further supporting the important place art can have in changing perceptions.

Art is not just about making pretty pictures. To an increasing number in the community, it has become a religion.

On May 5, the *Next Wave* art festival will open at the Mission to Seafarers.

The *Next Wave* is a collective of artists whose stated aim is for the world to be run by artists.

The collective favours working with elders to develop skills and their projections are being installed in the Mission's Norla Dome.

As the Docklands art scene re-establishes itself after the pandemic, private enterprise and not-for-profits are holding their own.

An exhibition of photographs is on at the 18 Pence café at the base of Tower Four in Yarra's Edge. The show is relevant to the local community, focusing as it does on Webb Bridge.

Love Where You Live features the work of local resident Pete Brehant, an enterprising abstractionist who has turned to photography.

For those looking for the kind of satirical oomph not usually found in cafes but once on show at Deakin, the linocut prints of Rona Green are on at Library on the Dock.

This is a strong exhibition featuring confident animals in a range of disguises.

There are cocky cockatoos, ironic koalas, a party (mag)pie and a slick dog in a suit and glasses called Specky.

All in all, Docklands has a lot to offer in the art department and you don't need to push a button to get a lift.

As ready as ever, Rona Green, Library at the Dock, until May 14; *Next Wave Festival*, Mission to Seafarers, May 5. ●



What's on: May 2023



UNTIL DECEMBER 6

SONGBIRDS

Every Wednesday, 10:30am to 11:15am.

An event for young, budding minds to learn all about the fun that can come with rhythm of language - with songs, rhymes, and stories to engage with. For babies and toddlers up to the age of 18 months.

Library at the Dock



SUNDAY, MAY 7, 10AM TO 4PM

AUSTRALIAN HERITAGE FESTIVAL OPEN DAY: THE STORY OF 1903 TALL SHIP ALMA DOEPEL

Learn about the vital role played by local islanders helping the inexperienced crew to navigate the shallow reefs and source fresh food and water. Shed 2 North Wharf Road.

<https://www.trybooking.com/CGAEQ>

UNTIL NOVEMBER 27

LIBRARY CINEMA (FREE)

Last Monday of every month, 3pm to 5pm.

Come along for contemporary, classic and documentary films on the big screen. Feel free to stay for snacks and a chat afterwards.

Library at The Dock



UNTIL DECEMBER 31

MAKERS MARKET AT THE DISTRICT

Last Sunday of every month, 11am to 4pm.

Enjoy live entertainment and creative, colourful market stalls showcasing art, craft, jewellery, fashion, homewares, gifts, and delicious homemade and homegrown produce.

SUNDAY, MAY 14, 12PM

MOTHER'S DAY LUNCH AT ARCHER'S RESTAURANT

Spoil mum with an elegant afternoon at Marriott Docklands.

Including a mimosa on arrival and a delicious 4-course lunch.

Contact for more details - (03) 8638 6000

SATURDAY, MAY 20, 6:30PM TO 9PM

BAKERY HILL WHISKEY DINNER

Enjoy a delicious night out at Marriott Docklands and an award-winning whiskey flight.

Contact for more details: (03) 8638 6000

TUESDAY, MAY 16, 5PM TO 6PM

2024 PREP INFORMATION SESSION

Come along and hear from the Principal and Assistant Principal. They will be sharing information about the school before you enrol your child for Prep in 2024. Enter via the playground gate at 17 Little Docklands Drive. Gates open from 4:50pm. Scan QR code to register:



10 YEARS ON

Looking back at Docklands News - 10 Years On

MAY 2013 | ISSUE 86 |

DOCKLANDS NEWS

Art brings life to NewQuay

A new public artwork is hoped to help kick-start the reinvigoration of NewQuay West.



MAB Corporation managing director Andrew Buxton and Cr Ken Ong last month unveiled Meeting 1 by Beijing artist Wang Shugang.

The sculpture, located at NewQuay Promenade on the western side of the NewQuay piazza, features eight identical crouching red men arranged in a circle.

The bronze sculptures weigh 100 kilograms each and were cast from a mould created from a life-size model. In Chinese culture, the number eight is believed to bring good luck while the artist considered red to be a multicultural colour.

The artwork was first exhibited at the G8 Summit meeting of world leaders in Germany in 2007 and then at the "Sculptures by the Sea" exhibitions in Sydney and Perth.

Mr Buxton said he had seen the artwork at the "Sculptures by the Sea" exhibition at Bondi and had been amazed by the way people of all ages were drawn to it.

"This is exactly the sort of interactive experience we want to offer people at Docklands," Mr Buxton said.

The artwork is hoped to help reinvigorate the area and create activity as development continues at the western end of NewQuay during

Docklands' second decade. "The red men are here to watch over us and make sure we do a good job," Mr Buxton said.

The City of Melbourne will be custodian of the sculpture and Cr Ong was present at the unveiling.

At the unveiling he said jokingly if there were 11 men rather than eight in the sculpture then its name could be "council meeting".

"Docklands hosts a fascinating outdoor art collection and this will be an addition that will appeal to people of all ages," Cr Ong said.

NewQuay Promenade is already home to the sculpture Silence by Adrian Mauriks and at the unveiling Mr Buxton said a third public artwork would be added to the promenade.

He said MAB was currently in talks with artist Callum Morton regarding the creation of an interactive artwork at the eastern end of NewQuay Promenade. ●

Open 24/7
genuine kinky escorts
5 mins to your door
CBD location

**We survived
COVID-19
RE-OPENED
Fully vaxxed
girls
to your door now!!**

Top Class of Collins Street

(03) 9654 6351

contact@topclassofcollinsstreet.com.au

Business Directory

Accounting

rubiiix
business accountants

Maximising your profits by
minimising your tax

PH 9603 0066
www.rubiiixbusinessaccountants.com.au

www.paramour.com.au SWA113E



(03)9654 6011

Melbourne's Finest Escorts
can be at your door in 5min
as we're located in the CBD

Pharmacy

+ victoria harbour
pharmacy+news

Hours: Mon to Fri **8am-8pm** & Sat 9am-1pm
 ☒ Pharmacy ☒ Giftware
 ☒ Magazines & Papers ☒ Tattoos
 ☒ Same day dry cleaning

66 Merchant St, Docklands (opposite Safeway)
 Ph: **03 9629 9922** Fax: 03 9629 9933
 Email: vicharbourpharmacy@nunet.com.au

Fast-paced yet
considerate,
nuanced yet distinct.

Redefining the
Melbourne buying
and selling experience.

88 Lorimer Street,
Docklands 3008
falsomelbourne.com.au
t. 03 9052 4665

**falso
melbourne**

Childcare



Giraffe
Early Learning Centre

Ph: 9670 0880
admin@giraffedocklands.com.au
www.giraffedocklands.com.au

Fitness



JUSTINTIME JUSTINTIME
WORKPLACE HEALTH PERSONAL TRAINING

All trainers are University Degree
qualified and we come to you!

www.justintimeworkplacehealth.com
www.justintimept.com

+ southern cross
pharmacy

Hours: Monday to Friday **7am-8pm**
Saturday **10am-6pm**

Southern Cross Station
Shop C8, 99 Spencer St, Docklands
Ph: **03 9600 0294** ☒ Fax: 03 9600 0594
Email: southerncrosspharmacy@nunet.com.au

TRIELLE.MIRVAC.COM



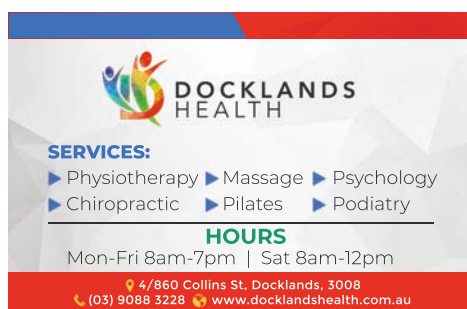
Community



Docklands
Neighbourhood House
provides social and
educational
opportunities for the
community of
Docklands.

A: 4 Wharf St,
Docklands
P: 9328 1126
W: thecentre.com.au

Health & Beauty



**DOCKLANDS
HEALTH**

SERVICES:
 ▶ Physiotherapy ▶ Massage ▶ Psychology
 ▶ Chiropractic ▶ Pilates ▶ Podiatry

HOURS
 Mon-Fri 8am-7pm | Sat 8am-12pm

4/860 Collins St, Docklands, 3008
 (03) 9088 3228 www.docklandshealth.com.au

Politician

ADAM BANDT

FEDERAL MEMBER FOR MELBOURNE

142 Johnston Street, Fitzroy
 (03) 9417 0772
 adam.bandt.mp@aph.gov.au



Shopping

COLLINS
SQUARE



collinssquare.com.au/whats-on

Dental



**NOW OPEN
SATURDAYS**

Mon-Fri 8:30-5pm
(Tue, Thu until 6pm)
Sat: 8:30-1pm

57 Merchant St, Docklands
 T (03) 9021 9487 | mob 0488 799 487
 (opposite Victoria Harbour Medical Centre)
 www.docklandsdentalstudio.com.au

www.victoriaharbourmedicalcentre.com.au

**VICTORIA HARBOUR
MEDICAL CENTRE**

Victoria Harbour Medical Centre Telephone **9629 1414**
 2-3/850 Collins Street Docklands 3008 After Hours **13 74 25**
 Entry via Merchant St Fax **9629 4265**
Hours: Mon-Fri 8am-6pm, Sat 9am-12 noon

Proudly representing the
community in Docklands

**Evan
MULHOLLAND MP**

**LIBERAL
VICTORIA** MEMBER FOR THE NORTHERN METROPOLITAN REGION

evan.mulholland@parliament.vic.gov.au



COLLINS PLACE

35 Collins St, Melbourne collinsplace.com.au

Legal Advice



**Pearce
Webster
Dugdales**

Working with
individuals,
families & business.

Tel: 9614 5122 Fax: 9614 2964
www.pearcewebster.com.au



Suite 1518, 401 Docklands Drive,
DOCKLANDS VIC 3008

Tel: (03) 9329 3500
Mob: 0447 449 779
W: www.rothwell.com.au

At Rothwell Lawyers we deliver exceptional legal
advice, and always focus on achieving the best
outcome for our clients.

AREAS OF PRACTICE

- Business Structuring
- Commercial Law Issues
- Conveyancing
- Debt Recovery and Alternative Dispute Resolution
- Family Law
- Insolvency Advice
- IVOs
- Wills, Estates and Probate

ELLEN SANDELL

STATE MP FOR MELBOURNE

(03) 9328 4637 office@ellensandell.com 146 Peel Street North Melbourne VIC 3051

QUEEN VICTORIA MARKET

For the best fresh produce, gourmet food
and specialty shopping,
you can't beat Queen Vic Market.

Open Tuesday, Thursday, Friday
Saturday & Sunday
with plenty of affordable parking.

QVM.COM.AU

Escorts



Erotic Elderly 96503295

Mature
Sophisticated
Affectionate
Discreet
Genuine
Affordable Escorts
paramour.com.au

Please show your what you want
5 mins to your door!

Financial



BOQ Docklands

Josephine Tan, Owner-Manager 0408 336 838
 Belinda Wynn, Branch Manager 0408 288 282
 9248 0188 docklands@boq.com.au
 facebook.com/boqdocklands melb boq.com.au

Real Estate



CityResidential REAL ESTATE PTY LTD

818 Bourke Street,
Docklands
VIC 3008

SALES Glenn Donnelly m: 0419 998 235
LEASING Lina D'Ambrosio m: 0430 929 851

www.cityresidentialbourkestreet.com.au

SELLING | LEASING | PROPERTY MANAGEMENT

Transport



Port Phillip Ferries



DOCKLANDS NEWS

Talk to Docklands News owner Sean Car
 T 0433 1920 484 E sean@hyperlocalnews.com.au
 about how to customise your campaign to our audience every month.



EAST WEST GROCER OPENING THIS MONTH IN MARKET LANE

東西
スーパー EAST WEST
MARKETPLACE

Waterfront Way, Docklands



THE DISTRICT
DOCKLANDS