

DOCKLANDS NEWS

docklandsnews.com.au

Forever Free

Puzzles & Trivia P29



Diwali Festival comes to Docklands in October

Photo by Murray Enders

Diwali Festival, the Indian spiritual celebration of family and culture, will take over Ron Barassi Snr Park in Docklands on Saturday, October 29, with all the tastes, sights and sounds of what's traditionally a five-day festival of Indian subcontinent to be packed into a single-day experience. *Full story on page 4.*

Docklands Summit offers chance to reset the precinct with Central Pier taking precedence

WORDS BY *Brendan Rees*
COUNCIL AFFAIRS

Development Victoria's acting group head of precincts Niall Cunningham has remained tight-lipped about what the future redevelopment of Central Pier holds, saying he would not want to prejudice forthcoming community consultation.

Speaking in front of more than 100 people who gathered for the Docklands Summit on September 2 – a much-anticipated platform for the community and stakeholders to voice their aspirations for Docklands which has struggled to make a post-COVID comeback – Mr Cunningham said, "We are very much in listening mode right now, and I think it's really important that we get this right."

"We all share that ambition that we want to see the right things happen in terms of the generation of that space," he said, but maintained Development Victoria (DV) – which is responsible for the planning and delivery of Docklands' urban revitalisation – would wait until it heard from the community before "we can have a discussion about what's next for Central Pier, but certainly not before that".

"I wouldn't dare to prejudice a consultation process and answer it with a predetermined outcome. It's very, very important that we're in listening mode."

Mr Cunningham, who was one of seven panellists chosen to speak at the summit held at Marvel Stadium, made the remarks in response to questions from the City of Melbourne's CEO Justin Hanney, which included what the future of Central Pier looked like and what "better

Continued on pages 14-15.

Docklands gears up for a triple-event weekend thriller

Thousands of people are set to descend on Docklands as the precinct prepares to host three major events in one packed weekend of high-octane fun in October.

WORDS BY *Brendan Rees*
EVENTS

In what is shaping up as one of the biggest boosts to the community, Docklands will host the Melbourne Boat Show, the Ice Hockey Australia National Championships, and the World Supercross Australian Grand Prix, which will all overlap on the weekend of October 21-22.

The events would not only provide a huge support for local businesses but bring confidence to the precinct which was sorely needed after extended COVID-19 lockdowns, the Docklands Chamber of Commerce's executive officer Shane Wylie said.

"The chamber is working diligently with the organisers to make this year's Melbourne Boat Show an unheralded success. It will consume NewQuay Promenade and beyond and we'd love to see it find its home here permanently," he said, adding it was "such a win for the precinct".

He said the chamber was also excited about the ice hockey championships being held at the O'Brien Icehouse, which would also "inject a beautiful economic impact into Docklands".

"Hotels are already at capacity, and we absolutely have loved working with the championships from the get-go."

After a three-year hiatus, the 60th Melbourne Boat Show will run across four spectacular days from October 20-23 at its new location on the Docklands waterfront after moving from the Melbourne Convention and Exhibition Centre.

Sixty exhibitors will line NewQuay Promenade as huge crowds gather for the ultimate experience which will also see on-water boat displays and trials, waterfront boat displays, a boater's marketplace, musical entertainment, boating and fishing stage presentations, seafood cooking demonstrations, a super fun kid's zone, a marine jobs centre, prizes including a voucher valued up to \$200,000, a visit from the tall ship *Enterprise*, and more.

The Boating Industry Association of Victoria's chief executive Steve Walker said excitement was building for the show.

"There's a boat show starved community out there, and a huge appetite for leisure, lifestyle, and boating. We are anticipating a great return to boat shows and are really looking forward to delivering this show," he said.

Two major ice hockey tournaments will also attract thousands of visitors – with the Jim Brown men's national championship and the women's national championship being held from October 18 to 21 and October 20 to 23, respectively.

"These players are the best of the best this country has to offer, and we are so excited to hosting them in Melbourne," president of Ice Hockey Victoria Maureen Black said.

"It's also an opportunity to give back to our friends at Icehouse who look after our ice sports so well. We are so lucky to have such a great venue and one that's run by such an awesome staff."

Continued on page 6.

BUSINESS, PAGE 03

A Event space on the water ATET to launch



COMMUNITY, PAGE 05

B Fundraising activities aplenty for Alma



HEALTH, PAGE 07

C Think Pink this October



ARTS & CULTURE, PAGE 09

D Two Can Productions renews Docklands



Melbourne Ferry Terminal Cafe Special Offer

Purchase 5 lunches at the new Melbourne Ferry Terminal Cafe and receive a one-way ferry ticket. Pick up a Loyalty Rewards Card today to start your journey.



SCAN ME

CONTACT
Suite 108, 198 Harbour Esplanade
docklandsnews.com.au
Tel: 8689 7980

EDITOR
Sean Car

PUBLISHER
Hyperlocal News Pty Ltd
ABN: 57 623 558 725

ADVERTISING
Hyper-local print works for advertisers in our digital world because local people are interested in local news. To sell to the Docklands community, contact Jack Hayes on 0401 031 236 or jack@hyperlocalnews.com.au

Reader contributions are welcome. Send letters, articles and images to: admin@hyperlocalnews.com.au

The deadline for the November edition is October 27.

SOCIAL MEDIA
Follow us on Twitter
@Docklands_News

Like us on Facebook
Docklands News

Follow us on Instagram
@docklands_news

Opinions expressed by contributors are not necessarily shared by the publisher.

hyperlocalnews.com.au
admin@hyperlocalnews.com.au



Capital Alliance continues its investment in Docklands with bid for new hotel and conference centre

WORDS BY *Sean Car*
PLANNING

The District Docklands could soon have another premium hotel as well as a new conference centre for up to 1000 people added to its precinct under Capital Alliance's latest bold proposal for Waterfront City.

The developer, which recently unveiled the new Marriott Hotel at The District, has partnered with Australia's International Hotel Group, TFE Hotels, to announce a "first-of-its-kind" mixed use proposal, featuring two world-class local hotel brands.

With plans submitted to the Department of Environment, Land, Water and Planning (DELWP) in September, Capital Alliance CEO Mohan Du said it was "doubling down" its exposure to hotels as he believed in continued demand for "purpose-built" accommodation.

The \$340 million two-tower project, designed locally by SJB Architects, will feature the largest rooftop infinity pool in Australia and the first purpose-built Collection by TFE Hotels and A by Adina properties in Melbourne.

But it's the inclusion of a 1000-person capacity event conference centre, located on a sky bridge connecting the two hotel towers, which makes Capital Alliance's latest vision for Docklands particularly extraordinary for the local area. Offering 360-degree views of the city, the centre seeks to add another dimension to Melbourne's high-end conferencing options and create an important drawcard for Docklands.

Mr Du said that after eight years of developing in Docklands, he was saving his "best for last" on his final parcel site in the precinct.

"As the saying goes, you save the best for last and these one-of-a-kind hotels will be uniquely different to other accommodation offerings in Melbourne," he said. "I know when we welcome guests and the public in 2026, we'll be able to



proudly showcase the legacy we've left behind with tremendous pride."

"Our partnership with TFE was born and galvanised during the uncertainty of the pandemic. It may sound cliché to say, but there are two things we're certain of, developing a hotel is incredibly challenging and we have unparalleled confidence in our ability to deliver a



I know when we welcome guests and the public in 2026, we'll be able to proudly showcase the legacy we've left behind with tremendous pride.



world-class establishment alongside TFE."

SJB founding director Michael Bialek said Capital Alliance's latest Docklands project, which is set to open in 2026 subject to approvals, would become an "architectural landmark on the Melbourne skyline".

"Our design inspiration was drawn from natural elements such as sculpted landscape forms and the proximity to the Yarra River," he said. "We have also blurred the division between inside and outside to maximise daylight and those all-important city skyline and uninterrupted water views."

The proposal for 28-38 Pearl River Rd also features a day spa, retail shopping, and restaurant. ●



Sean Car
EDITOR

SEAN@HYPERLOCALNEWS.COM.AU

DOCKLANDS' #1 REAL ESTATE AGENCY

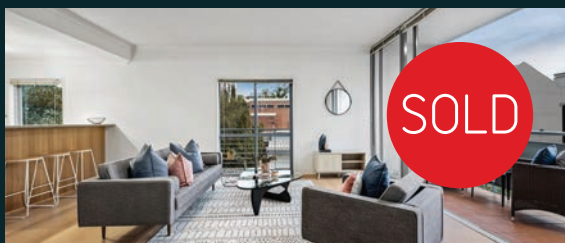
LUCAS

With the most properties sold in Docklands and many sold after one open for inspection, find out for yourself why we're number one.

If you're interested in knowing the value of your property in today's market, speak with our award-winning team today.



Docklands



SOLD

5/95 dodds st, southbank | SOLD for \$635,000
cary thornton | 0437 204 556



SOLD

3202/8 pearl river rd, docklands | SOLD for \$735,000
ricky li | 0487 888 873



SOLD

193/283 spring st, melbourne | contact agent for sold price
thomas tregonning | 0413 317 304



JUST LISTED

1112/381 docklands dr, docklands | \$575,000 - \$625,000
lynn lum | 0474 044 293



JUST LISTED

603N/883 collins st, docklands | \$650,000 - \$710,000
serena su | 0499 083 362



JUST LISTED

1003/15 caravel lane, docklands | \$600,000 - \$660,000
thomas tregonning | 0413 317 304

9091 1400 | lucasre.com.au

Event space on the water ATET to launch in October

WORDS BY *Sean Car*
BUSINESS

The long-awaited and highly anticipated opening of Docklands' new floating flexible events space ATET is upon us, with the venue to officially open to the public on Saturday, October 15.

Following countless construction hours to transform the former barge, previously used for the restoration of historic tall ship *Alma Doepel*, the structure's new lease on life in Docklands is rapidly nearing completion.

Located at North Wharf in Victoria Harbour, ATET is expected to breathe much-needed life and energy back into Docklands' events industry and provide another valuable space for the community following the closure of Central Pier in August 2019.

Following a formal launch and media event on Friday, October 14, the space will officially open to the public on October 15 with a music event showcasing the venue's focus on food and beverage, and spectacular views from the water.

The man behind the ATET vision Jake Hughes told *Docklands News* that after a "challenging" but "enjoyable" construction journey, the team was "really excited" to be opening just in time for Melbourne's warmer months.

"We've already endured years of COVID and plenty of delays, so we're sitting in the best position we've been in for a long time," Mr Hughes said. "It's going to be exciting with this time of year coming into the warmer weather ... it's the perfect time to be launching."

Docklands Chamber of Commerce (DCC) executive officer Shane Wylie said it was "so supportive of the launch of ATET" and looked forward to supporting its "game-changing" vision in Docklands.

"We first heard news about the project more than two years ago and have been involved supportively ever since. We think it's a game changer for the Harbour and will bring back events which have sorely been missing since the demise of Central Pier," Mr Wylie said.

"We can't wait for the official launch and will continue to support ATET in any way we can."

From engineers, naval architects, plumbers and electricians to sound and lighting technicians, venue management, design and marketing, Mr Hughes said more than 50 individuals had been part of making the ATET vision a reality.

As the first space of its kind in Melbourne, he said there "wasn't really a textbook" for "building an events space of this size on a barge", and while the project had thrown up its share of challenges, nothing had been insurmountable.

But as the project has drawn closer to structural completion, Mr Hughes said the behind-the-scenes efforts to bring the space to life were really starting to take shape as the venue prepared for opening.

With the aim of creating both a "really fun, relaxed" environment, he said guests to ATET could expect a very down-to-earth feel that was open to a range of different uses and interests.

"We really see it as a community space that has a use for a lot of different facets of life. It's not just one thing or the other. We really want to provide a space for the community as a whole," Mr Hughes said.

"From day one we've designed it as flexible space. All the furniture is loose and removable. There are no fixtures through the deck so it's a big open space, it's fully enclosable, and the idea right from the start is that we can activate it in so many different ways."

With the venue only licensed to 1am on weekends for music events, Mr Hughes said ATET would be more of a "day club" which would channel the atmosphere of those seen in Europe with "a big focus on music, plenty of lounge space and top quality food and drink".

"Our head chef has just flown in from Scotland who's spent plenty of time working in Michelin starred restaurants across the UK. Our venue manager is an incredible bartender and we've got a couple of amazing mixologists, so food and beverage is a big part of the experience."

But in addition to its music and hospitality



offering on weekends, Mr Hughes said ATET would act as a "blank canvas" for a range of community, cultural and private events, with a strong focus on wellness during the week.

Morning sunrise yoga classes, wellness activities, and mental health workshops are among some of the activities mooted, while Mr Hughes said the space could be donated to a range of not-for-profit and social causes for functions.

Beyond music, Mr Hughes said ATET would also focus on supporting the creative industries with the inclusion of an art wall for rotating local artists, while also making the space available for regular exhibitions.

Locals can also expect movie nights and big screenings of major sporting events such as the FIFA World Cup. And in an effort to bring major event activations back to the precinct, think Melbourne Fashion Week and Grand Prix pop-ups on the water.

While currently berthed in a temporary location near Shed 2, ATET will eventually relocate right to the tip of North Wharf near the Bolte Bridge subject to structural assessments by Development Victoria, which recently completed upgrade works on the wharf.

To ensure it was "harmonious with the local community", Mr Hughes said extensive work had been done in planning with local authori-

ties with respect to sound modelling, security and event management.

Now looking ahead to its launch and the warmer months, he said the team was excited about operating in Docklands and showcasing the precinct's "magnificent" and "undervalued" waterfront to the world.

"Since we've been down here we've realised that local Melburnians don't really seem to engage with this part of the city for whatever reason" Mr Hughes said. "It's so beautiful being down on the water, especially on a nice day and a nice night and you get the sunsets over the harbour - it's so baffling that we don't embrace this area more. It has so much potential."

"I think if you look at a lot of cities around the world that have harbours, it's often one of the crown jewels of the city, and we just sort of turn our back on it. So, I think we're really hopeful that what we're doing is something that starts to bring people to the area and then realise what's here and start to see more opportunities for more things to happen." ●

For more information:
atet.com.au

COLLINS SQUARE 

COLLINS SQUARE
EXHIBIT M/FW
FASHION CAPSULE 7
- THE RESET ROOM

19 SEP - 14 OCT
(excluding weekends)

An insider's look
into Melbourne's best
independent, design-driven,
slow-fashion makers.

*In partnership with Creative Victoria
& Melbourne Fashion Week*

For more information visit
collinssquare.com.au

CREATIVE VICTORIA 

M/FW
CITY OF MELBOURNE



Diwali Festival comes to Docklands in October

WORDS BY *Sean Car*
EVENTS

Diwali Festival, the Indian spiritual celebration of family and culture, will take over Ron Barassi Snr Park in Docklands on Saturday, October 29.

Following the hugely successful Holi Festival held in Docklands in March, which saw more than 1300 people flock to Ron Barassi Snr Park to celebrate the Hindu "Festival of Colour", Diwali is expected to draw similar energy to the precinct this month.

The word Diwali translates as "row of lighted lamps" and is a time to recite prayers, share gifts and sweets, help the needy and decorate homes with candles and colourful lights. The festival is observed by Hindus, Sikhs and Jains who celebrate new beginnings, the triumph of light over darkness and good over evil.

Local charity SarasCare, which supported the Holi event led by Docklands Neighbourhood House in March, is now the lead organisation bringing Diwali to Docklands and its managing director Gautam Gupta said locals could expect a celebration like no other.

"Diwali has been celebrated for thousands of years and is a key family, cultural and spiritual event across India, Sri Lanka and Nepal," Mr Gupta told *Docklands News*.

"We have designed a unique series of community activities for this first Diwali that will cater for families and those who want to be part of a more authentic and spiritual Diwali experience."

Running from 1pm to 9pm, Diwali@Docklands will bring together Arti (prayer), Darshan (visual experience), Bathukamma (flower festival), Mehndi (dye tradition), song, dance, and Sattvic temple food to deliver all the tastes, sights and sounds of what's traditionally a five-day festival of Indian subcontinent into a single-day experience.

Mr Gupta said SarasCare was seeking to create a "more giving-based" event which was "safe for families and allows a deeper connection to all of the traditions of Diwali from the west, east, north



and south of India".

"Past Diwali events in Australia have tended to focus on a more commercial type of experience with non-traditional commercial pop music, non-vegetarian food, easy access to alcohol and large crowds to maximise profits," Mr Gupta said.

"The Diwali event at Ron Barassi Snr Park will feature a range of activities throughout the day that are designed to allow a two-way spiritual and cultural participation for both those longing for the traditions of 'Diwali back home' and for those in the broader community who

want to learn and experience something new."

Cultural performances, activities and workshops on the day will include ...

- Bathukamma – a mass dance event.
- A pop-up Temple experience to allow Arti and Dashan.
- Workshops in traditional arts and cultural activities.
- Painting workshops for kids.
- Mehndi workshops for all.
- Community performances of drumming, music and dance.

- One hundred per cent vegetarian Sattvic food prepared by volunteers from two Melbourne Hindu Mandirs.
- Small gifts of Lego and painting kits for children.
- FREE clothing donated from major brands for those on Commonwealth concession cards.

Mr Gupta said Diwali@Docklands had been made possible by the generous support of sponsors, donors and volunteers, and hoped it could become an annual fixture for the ever-evolving Docklands community.

"Our local partners, traders and residents in particular have got behind this new local event and spread the word. We are grateful that the City of Melbourne and Development Victoria supplied \$7500 to the Docklands Neighbourhood House for this event," he said.

"We also would like to thank the Indian businesses who have generously funded in-kind support for gifts, food and performances."

"We know that COVID-19 and lockdowns have impacted the Docklands businesses more than most Melbourne locations. So, we see a community-based weekend event like this can attract locals and others to the area and help activate Docklands."

"The colour, fun and joy of Diwali will be an experience that has to be felt in person to be fully appreciated. Ultimately, we see the success of this event will be measured by the sense of community and the cross-cultural connections that we build in Docklands before, during and after the event."

"The most important request we have for the Docklands community is to come along on Sunday, October 29 and join with us to celebrate the sheer joy, giving and happiness of Diwali." ●

For more information:
docklands.community

 COLLINS PLACE

MF/W
SPEND & SAVE

Support independent Melbourne designers this Fashion Week.
Spend \$350 at a participating retailer and receive a \$50 gift card.
From 10-16th of October.

Participating retailers include Luxx Jewellery, Digbys, Feathers, Cable Melbourne and Jacqui Fernandes. For more details, visit collinsplace.com.au



Apprentices put their skills to the test

WORDS BY *Brendan Rees*
EDUCATION

Twenty-one automotive apprentices at the Bendigo Kangan Institute's Docklands campus have battled it out in the hope of claiming a spot in the coveted WorldSkills Australia competition.

Competing individually, the competition is designed to test their technical and professional skills under pressure, just like they would repair a vehicle in a workshop.

The students aged under 24 are all part of the campus's Automotive Centre of Excellence, which hosted the September 16 event which involved the Melbourne regional competitions.

They competed in categories including light vehicle, heavy vehicle, motorcycle mechanics, automotive refinishing (painting) and auto repair (panel beating).

The winners, if chosen from a range of industries during a presentation later this year, could progress to the national championships, which will be hosted in Melbourne in August 2023.

From there, winners could go on to represent Australia at Lyon, France in 2024.

Grant Petch, who is the project manager at Kangan Institute's Docklands campus and the skills competition manager of automobile technology for the international WorldSkills, said he was impressed with the level of skills showcased at the event. ●

Fundraising activities aplenty for *Alma*

WORDS BY *Sean Car*
COMMUNITY

Docklands' signature tall ship the *Alma Doepel* is hosting a number of fundraising activities in this month to raise much-needed funds for its ongoing restoration.

Based at the North Wharf boat sheds, the restoration team will open to the public for two days only on Tuesday, October 4 and Thursday, October 6 as part of the Seniors Festival.

From 10am to 2pm, guests can take a tour behind the scenes of the ship's restoration and learn more about its 119-year-old history, as well as its future.

Tickets are available for seniors and students for just \$10, adults for \$15 and free for people aged under 14.

On Friday, October 7, the *Alma Doepel* team will stage its annual flagship fundraiser in Docklands with a gala luncheon attended by Lord Mayor Sally Capp and hosted by Channel

Nine's Peter Hitchener.

Alma invites the community to join it for lunch as the Lord Mayor helps launch the next chapter of its journey – the "operational stage" of the project in partnership with the Waypoint Foundation.

When the restoration of the *Alma* is complete, the ship will offer a range of vital youth development programs, which the Waypoint Foundation – an organisation focused on delivering life-changing initiatives for young people through building leadership, resilience, empathy, self-esteem, tolerance and understanding – will help deliver.

This is the *Alma Doepel's* major fundraising event for the year. Funds raised at this event represent a considerable contribution towards the ship's long-awaited restoration.

The luncheon will take place from 12pm to 2pm at The Promenade Docklands, 78 NewQuay Promenade, overlooking the *Alma Doepel*. Tickets are available for \$250 each, or tables of 10 can be booked for \$2500. \$150 from each ticket is a tax-deductible donation. ●

For more information on Seniors Festival tours:



For more information on the Gala Luncheon fundraiser:



EUROPA NIGHT MARKET

WEDNESDAYS | 5PM-10PM
UNTIL 26 OCT

This spring, the Europa Night Market comes to Queen Vic Market! Enjoy a European-style bazaar with delicious street food and drink, great shopping and Euro-inspired live music.

EUROPANIGHTMARKET.COM.AU

Harbour art structure goes up in flames

WORDS BY *Brendan Rees*
SAFETY & SECURITY

A grand timber art installation on Harbour Esplanade has gone up in flames more than a decade after it opened to showcase the “natural phenomena” of the precinct’s sea, sky, and light.

Emergency services were called to the waterfront structure located near Latrobe St just before 12.30am on September 16 following a Triple-0 call.

A Fire Rescue Victoria spokesperson said firefighters arrived at the scene in minutes to find the structure “fully involved in flames”.

“Wearing breathing apparatus, crews quickly extinguished the fire, with the incident declared under control at 12.36am,” the spokesperson said.

The structure, known as the *Sealight Pavilion*, was a project commissioned between Monash University, Rintala Eggertsson Architects and Grimshaw Architects and supported by Development Victoria.

It is made of reclaimed timber from the Mornington Peninsula and opened in November 2011 after it was designed and constructed by second- and fourth-year Monash University architecture students.

A Development Victoria spokesperson said work was underway to assess the next steps for the charred remains of the structure, adding safety fencing had been installed around it.

Victoria Police confirmed the fire was not being treated as suspicious.

The structure has two pieces including a tower, which dissolves as it climbs to frame the sky, and a cantilever, which dematerialises as it reaches out to frame the sea – however the latter appeared not to be damaged by fire.

The recycled timber used for the *Sealight Pavilion* was chosen to amplify the experience of “the natural phenomena of sea, sky and light” while offering a place to meet, to “escape the elements, or simply to witness the passage of time”.

Witness Lori Boys said she saw flames engulf the structure from her balcony, which she captured on video.



▲ Images before (top) and after (bottom) fire engulfed an art installation on Harbour Esplanade.

“There were at least three fire trucks. A number of police cars did arrive but as it was very late there wasn’t anyone around to interview,” she said.

“After the fire was extinguished and the fire department left, one police car remained for at least half an hour just parked in front of the structure.”

Ms Boys of NewQuay said as a resident of nearly 20 years, she felt increasingly unsafe and “less likely to walk around late at night like I used to”.

“It’s very disappointing as I love living here and always felt safe in the past. I do hope that we do get a greater police presence here as we have requested this.”

Her comments come as residents have previously voiced concerns about the precinct “fast becoming a no-go zone” at night due to reports of increased violence, anti-social behaviour, and public intoxication – although *Docklands News* is not making any suggestion that this was linked to the fire. ●



▲ (Left) L-R: The DCC executive officer Shane Wylie, Ice Hockey Victoria’s president Maureen Black and The Boating Industry Association of Victoria’s chief executive Steve Walker are gearing up for an action packed Docklands weekend.

Docklands gears up for a triple-event weekend thriller

Continued from page 1.

“Ice Hockey in Australia is run by volunteers, and we have some very passionate and dedicated people on board to make sure the event is enjoyable for all.”

More than 600 athletes and officials from Victoria, Queensland, New South Wales, ACT, South Australia, and Western Australia will make the trip over for the championships – which would do wonders in lifting the spirits for Docklands as it makes a slow comeback amid the pandemic.

In another big win for Docklands, Marvel Stadium will host the World Supercross Australian Grand Prix from October 21-22, which will feature 10 teams and 40 riders across the globe battling it out in intense racing, while live entertainment, freestyle motocross stunts, pyrotechnics, and more will be on offer.

For more on the Boat Show:
melbourneinternationalboatshow.com.au

For more on the Ice Hockey Championships:
iha.org.au

For more on the World Supercross Aus GP:
wsxchampionship.com

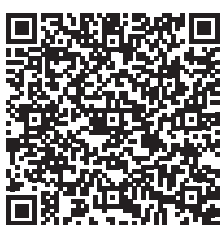
DISCOVER PUBLIC ART RIGHT AT YOUR DOORSTEP

Over 8 curated works located opposite Southern Cross Station at Melbourne Quarter.

Browse the collection of artworks ranging from sculptures, installations and light projections by world renowned artists including Reko Rennie, Yhonnie Scarce, Stanislava Pinchuk and more.

Visit melbournequarter.com/publicart or collect a physical map from Monday to Friday 8am-6pm from One or Two Melbourne Quarter concierge.

Scan me!



Think Pink this October and help enable a better journey through breast cancer

WORDS BY *Kaylah-Joelle Baker*
HEALTH

This October for Breast Cancer Awareness Month, Think Pink Foundation is hosting a fundraiser for its Living Centre in Docklands.

The fundraising event will incorporate three fun and practical makeup masterclasses hosted by Nutrimeetrics specialist and Living Centre volunteer Lucia Cardamone, and everyone is invited to attend.

As a free-of-charge centre, The Living Centre at Yarra's Edge exists to support patients, and their families and carers in seeking professional and caring holistic support at any stage of their journey with breast cancer.

While operating the centre has become more challenging due to the pandemic, Think Pink Foundation director and patron and founder of The Living Centre Irene Hendel OAM is hopeful the fundraiser will help share their message.

"Hopefully there will be a lot of women who don't have breast cancer [at the fundraiser] who will become aware that we exist and that we offer a totally free facility for the women, who are often financially destitute, that come to us," Mrs Hendel said.

"Women can cope with most things that come their way, but when they lose their hair and their skin changes due to radiotherapy or chemotherapy, they don't feel like themselves and feel very vulnerable. The Living Centre has always been very mindful of this."

In addition to makeup classes being used to help women as they go through breast cancer, the centre also has a hairdressing salon where they have continued to fit women with wigs without any charge.

This has resulted in "thousands" of wigs being fitted since The Living Centre first opened in 2010 on St Kilda Rd, and more recently, at the new Docklands location.

While the move to Docklands in February 2020 resulted in the centre having to close to the public shortly after the official opening, Mrs Hendel said The Living Centre team was able to



pivot and offer their services online to women both in and outside of Victoria.

"Since the pandemic started, we have been doing all of our programs online and we have been able to expand our geographic reach to include women in rural areas and other states," she said.

"Some of our in-house programs, like art therapy, have been challenging to provide online, but our very popular exercise, yoga and meditation programs have grown and become invaluable to hundreds of women during the pandemic. It's been amazing."

Reaching patients all over Australia is something Mrs Hendel doesn't take lightly, as it was her personal experience of being diagnosed with breast cancer twice, and seeing other women around her struggling, that led her to envisage the centre in the first place.

“

Hopefully there will be a lot of women that don't have breast cancer [at the fundraiser] who will become aware that we exist and that we offer a totally free facility for the women, who are often financially destitute, that come to us,

”

Freemasons Victoria, The Living Centre has become a space where people can receive support and know they are not alone in their breast cancer journey.

Professional counselling and advice on coping strategies are available for people affected by a diagnosis, and a unique "Supporting Blokes" group is also offered for partners and loved ones of those diagnosed.

To allow The Living Centre to continue to make a difference in the lives of those navigating breast cancer at this time, the makeup masterclasses fundraiser will be held on October 8, 23 and 27 between 1pm and 3pm for a cost of \$50. ●

"The first time I sat with the same group of women [at the hospital] I was amazed at the spectrum of age groups that were there, as there were also really young people among the group," she said.

"Two girls in particular had lost their hair while undergoing intense treatment, and when I asked how they were coping I was shocked when they told me they had to sell their cars in order to pay their out-of-pocket medical bills. They were financially destitute."

Mrs Hendel described this conversation as "the moment" that led her and her husband David Hendel to establish the free facility for Victorian women and men struggling with a breast cancer diagnosis.

With initial support from Kmart and long-term ongoing support from Mirvac and

To make a booking:
thinkpink.org.au/centre-programs/makeup-master-classes-october22/

JOIN WITH A MATE AND SPLIT THE JOINING FEE*

*Terms & Conditions Apply.

ANYTIME FITNESS
CARLTON | DOCKLANDS | WEST MELBOURNE

ANYTIME FITNESS

ESCALA
NEWQUAY

READY TO MOVE IN NOW

Limited Residences Remaining

HOMES AT 2018 DEVELOPER PRICES

Jeanne Yu — 0466 412 738 | Adam Gao — 0466 868 063

381 DOCKLANDS DRIVE, NEWQUAY
escalanewquay.com.au

DEVELOPED BY / **MAB**

ADVERTISEMENT
Your City of Melbourne community update

SUMMIT SHINES SPOTLIGHT ON DOCKLANDS



Key stakeholders discussed ideas to revitalise the waterfront precinct

More than 100 Docklands stakeholders joined City of Melbourne for a half-day summit at Marvel Stadium on Friday 2 September to explore ideas to revitalise the Docklands precinct.

The Docklands Summit brought together residents, businesses, government, and developers to explore short, medium and long-term solutions to build momentum and create sustainable change within Docklands.

In opening the summit, Lord Mayor Sally Capp acknowledged that Docklands has been one of the hardest-hit precincts in the country due to the pandemic.

While largely attributed to the absence of office workers, international students and visitors, it is compounded by the closure of two of Docklands' major landmarks, Central Pier in August 2019 and the Melbourne Star Observation Wheel in 2021.

'Today is an important step in that journey to revitalise the precinct and restore its vibrancy. There are already a number of great initiatives driving

Docklands' regeneration. We want to highlight these and provide an opportunity for the Docklands community to create connections, join the dots and strengthen the work that is already happening,' the Lord Mayor said.

'As stakeholders representing all aspects of the Dockland's community, you have the power to build momentum and ongoing change in this neighbourhood.

'Today we're focussing on quick wins - the opportunities that can be realised now in the short-term while larger projects are progressed.'

Councillor Jamal Hakim shared feedback from small focus group discussions to identify key opportunities and challenges that were held in the lead up to the summit.

'We heard overwhelmingly that the locals love Docklands - it is a slice of paradise which also has all of the benefits of being close to the central city. We just need to celebrate the good things in Docklands more to improve the public and external perceptions of the area - Docklands is an easy target,' Cr Hakim said.

'Events and activations are well loved and part of the identity of living in an inner city location. But there is a need to consider program of smaller-scaled community based initiatives to supplement the events. This will support the community, businesses and regular visitors outside of the major event.

'And there is a need for a long-term plan for vacant office floor space to attract start-up businesses and education - potentially including expansion of the primary school, a new high school or tertiary campus,' Cr Hakim said.

The focus group feedback was used as the basis for workshop discussions during the summit.

Some of the key opportunities identified during the summit were:

- Simplify governance in Docklands.
- Celebrate the water as a unique element of Docklands.
- Strengthen the identity of Docklands.
- Complement existing events with regular community or place-based activations.

- Greening - opportunities to explore pocket parks, biodiversity links and softening the existing built form.
- Public realm improvements such as landscaping, seating and lighting.
- Wayfinding - improving legibility between precincts.
- There is a need for an anchor institution or draw card destination to change public perception.
- Harbour Esplanade and Central Pier remain the focus for the longer-term vision.
- Improve connections to Docklands from existing suburbs to the north and east.

The summit also included an overview of the history of Docklands by John Tabart, the former CEO of the Docklands Authority from 1997 to 2006, and discussion with Deputy Lord Mayor Nicholas Reece.

City of Melbourne CEO Justin Hanney moderated a panel discussion with representatives from Development Victoria, the AFL, Lendlease, ANZ, Docklands Primary School, Ashe Morgan and a Docklands resident.

The outcomes of workshops held at the summit will be summarised by the event facilitator, MosaicLab, into a 'What we heard' report, and published on Participate Melbourne in the coming weeks.

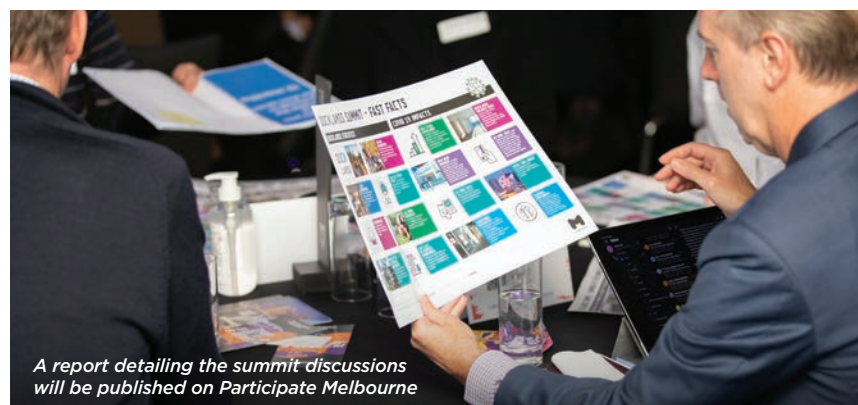
Short, medium and longer-term projects discussed at the Summit will be incorporated into the Neighbourhood Planning Framework, with further engagement via the Neighbourhood Portal, due to be launched later this month.



More than 100 stakeholders gathered to discuss the biggest opportunities for Docklands



Councillor Jamal Hakim



A report detailing the summit discussions will be published on Participate Melbourne

To stay up-to-date, visit participate.melbourne.vic.gov.au/docklands-summit

Connect with us
 f /cityofmelbourne
 @cityofmelbourne
 @cityofmelbourne



Two Can Productions renews Docklands with its own unique spin

WORDS BY *Kaylah-Joelle Baker*
BUSINESS

Docklands is now home to two new video creators, Orion Holder-Monk and Torben Owre, who are driven creators ready to prove exactly what they can do through their business Two Can Productions.

Combining Orion's skills in visual effects and Torben's in video editing, and their extensive histories in video and filmmaking, they are collectively transforming short-form videos into cinematic masterpieces.

"We come at videos and videography in a more unique way because of our unique backgrounds in video editing and visual effects," Orion and Torben said.

"We have a good grasp of post-production and we put on a more cinematic kind of touch to videos."

While the duo continued to showcase a wide range of short films from weddings, to gigs and product



▲ Orion Holder-Monk and Torben Owre in their studio Two Can Productions.

shoots when working from separate locations, it was their selection for the Renew Docklands initiative that has allowed them to expand their business.

The shopfront activation program and initiative is a partnership between the City of Melbourne and the Victorian State Government, aimed at revitalising Docklands, and

it is an opportunity both Orion and Torben are "really thankful" for.

"We were still making it work [from separate homes] but thought it would be a great opportunity as part

of the renew program to be in the same space together, and in a space where we can do whatever we want," they said.

"Engaging with the local businesses around here is also something that is really appealing to us as we want to create services easily available for them. We are really keen to work on as many interesting projects as we can."

Completing the final touches of their studio in the last couple of weeks with a mural spread across one of the studio walls, Two Can Productions is more than ready to make their stamp on Docklands through helping local businesses and events showcase themselves in bigger and better ways.

Two Can Productions is located at Digital Drive in the Digital Harbour precinct. ●

For more information:
twocanvideo.com.au

Public vote will choose the 2023 pride tram

WORDS BY *Carol Saffer*
ARTS & CULTURE

For the third consecutive year, a design-wrapped tram will travel in the annual Midsumma Pride March in 2023 and around its network until the end of the year.

This year, however, the public can choose the winning design for the tram.

Yarra Trams, in partnership with the Midsumma Festival and Joy Media, want the rainbow communities of Melbourne to design the next #AllAboard tram.

Yarra Trams CEO Julien Dehornoy said, "I absolutely cannot wait to see what designs Melburnians come up with for #AllAboard 2023."

"We want to see what you think inclusion on public transport looks like and what #AllAboard means for you."

Design submissions for the pride tram close on September 30. A judging panel drawn from Yarra Trams, Midsumma, Joy Media, and the Department of Transport will review all entries and select five finalists.

It is then over to the public to vote for their favourite design.

The finalists' work will be displayed online at yarratrams.com.au/AllAboard, along with a link to the voting from Friday, October 7.

The winner will be announced on Monday,



October 24, via social media and Yarra Trams website.

The tram will be wrapped in the second week of December and unveiled to the public in mid-December at Malvern tram depot.

The winning artist will be awarded \$5000 for their artwork, which will be applied to a D1-class tram and take pride of place at the 2023 Midsumma Pride March.

The second-placed artist will take home \$3000 for their design which will feature on a tram shelter in the vicinity of the Victorian Pride Centre for the Midsumma Pride March in February.

Midsumma's CEO Karen Bryant said, "We are thrilled to be partnering with Yarra Trams to provide this important public art opportunity for LGBTQIA+ visual artists to share their talents and unique visual stories."

The 2023 #AllAboard tram will continue to highlight Yarra Tram's message that it celebrates Melbourne's diverse communities and welcomes those from all walks of life aboard its trams and network.

As the tram rolls along the route of the Midsumma Pride March, Yarra Trams workers are expected to march alongside this symbol of inclusion and diversity as they have done in

“

I absolutely cannot wait to see what designs Melburnians come up with for #AllAboard 2023

”

previous years.

Joy is Australia's LGBTQIA+ independent media organisation, made up of the diverse voices of the rainbow.

Joy CEO Ange Barry said it was excited to be recognised on the iconic Pride Tram.

"We are proud to be featured alongside the successful artist's original work and to be seen and celebrated by Melburnians as the Pride Tram winds its way along our beautiful streets, and of course, as the lead of our Pride March," she said.

The current #AllAboard D-class tram is wrapped in the colours of the Progress Pride flag and operates on routes 5, 6, 16, and 72. ●

Glenn Harvey answers your legal questions

Q. My relationship with my spouse has broken down but how can I afford legal representation?

A. There are various options including obtaining legal finance payable at the end of your case when you receive your property settlement.

Please call to make an appointment for a FREE NO OBLIGATION 30-minute Family Law Clinic via video conferencing or telephone.

Pearce Webster Dugdales Working with individuals, families & business



Pearce Webster Dugdales Level 4, 379 Collins Street, Melbourne T 9614 5122 www.pearcewebster.com.au

Docklands' babies have been named

WORDS BY *Kaylah-Joelle Baker*
ARTS & CULTURE

Docklands' favourite wild baby animals have officially been named following a community-wide naming competition as part of Yarra's Edge developer Mirvac's *Wild About Babies* public sculpture experience.

The name submissions were judged by a panel that consisted of Mirvac's general manager residential Victoria Elysa Anderson, WWF-Australia's impact partnerships manager Vanessa Calvert, and Wurundjeri Elder Auntie Zeta Thomson.

The 20 baby animal statues along Yarra's Edge were created by internationally renowned artists Gillie and Marc, who partnered with developer Mirvac to raise awareness for vulnerable endangered species.

"Over the years we've travelled all over the world studying animals. These babies are the products of the many photographs and sketches we've taken," Gillie said.

"We've tried to make them as life-like as possible so that once people see these animals they will fall in love and be inspired to take action to save them."

Overlooking the babies is a three-metre-high eastern lowland gorilla who now goes by the name of Gaia.

The winning name of the mother statue, which was designed to be a representation of a protector of the baby statues, stands for the goddess of the earth.

In addition to having the selected names engraved on the babies' plaques, winners received a Gillie and Marc print valued at \$849 and had \$100 donated to WWF-Australia by Mirvac in their name.

The winning *Wild About Babies* names:

- Maverick** the baby leopard.
- Sotla** the baby polar bear.
- Waru** the baby rock wallaby.
- Wayang** the baby Javan rhino.
- Adwaita** the baby giant tortoise.



▲ Neroli the baby Sumatran orangutan.

- Kamali** the baby white rhino.
- Ursula** the baby Marsican brown bear.
- Nerida** the baby hippo.
- Chi** the baby giant panda.
- Alasie** the baby Arctic fox.
- Hope** the baby cheetah.
- Neroli** the baby Sumatran orangutan.
- Kirabo** the baby African elephant.
- Angel** the baby giraffe.

- Indraa** the baby Bengal tiger.
 - Nuria** the baby western lowland gorilla.
 - Zuberi** the baby lion.
 - Nefesh** the baby Indian elephant.
 - Gombe** the baby chimpanzee.
- Visitors of the interactive animal conservation exhibition can still continue to engage with the endangered species through using the QR code provided on each animal's plaque,



▲ Waru the baby rock wallaby.



▲ Adwaita the baby giant tortoise.

which will provide more information on the species and allow for direct donations to be made towards WWF-Australia.

At the time of publishing, the baby Grevy's zebra was still in the process of being named. ●



Kaylah-Joelle Baker
JOURNALIST
KAYLAH@HYPERLOCALNEWS.COM.AU

The vision of the night photographer



The crowded streets of Tokyo have taken on a new light in an exhibition that opened recently at Library on the Dock.



WORDS BY *Rhonda Dredge*
ARTS & CULTURE

Kip Scott is a commercial real estate and architectural photographer.

He has taken the slick process of night photography to new heights.

Magenta and purple on the colour scale have been augmented to simulate the filmic effects of *Bladerunner*.

He's pretending there's a dystopic feel to Tokyo



but really Scott is an admirer of the built form and lights of the city.

"It's my favourite city," he said. "In the daytime it's like Melbourne, grey and flat, but at night ..."

One building is a camera store, a brilliant

commercial success on a corner.

It has just rained, and the street is glistening, an effect Scott has tried to simulate in other photographs.

Another clever shot shows the reflections on

glass as the photographer looks down.

"I love getting up high," he said. "Getting a bird's eye view from a distance and see how people react."

Scott visited Tokyo before the lockdown and has been working on the prints since, which are not just inkjet prints but type C prints created by exposing chemicals to digital light.

The surfaces have a certain kind of lustre the aficionados will probably relish.

There's no denying that *Tokyo Midnight* has shock value in that it gives one of the globe's biggest cities a hyper-real ambience.

There are unsettling spaces crisscrossed by unknown forces and otherworldly references.

An alien intelligence would not be out of place here and that is the strength of the exhibition.

It eschews sentimental, historical and humanist narratives in favour of architectural commodification.

Scott spent time with his tripod capturing data for his productions.

Despite the millions of pedestrians, the only hint of a human figure is holding an umbrella in front of the camera store.

Tokyo Midnight, Kip Scott, Library on the Dock, until October 6. ●

Shed those winter kilos for good by focusing on good, wholesome nutrition

Let's shift the focus from what we shouldn't to what we should eat for good health and a slimmer body!

Your *Beaming You* Personal Cheerleader Zanda is here to help

beamingyou.com.au beyou@beamingyou.com.au [/beamingyou](https://www.instagram.com/beamingyou)



BEAMING YOU
MAKE THAT CHANGE

Melbourne Quarter revamped with First Nations artworks

WORDS BY *Kaylah-Joelle Baker*
ARTS & CULTURE

Melbourne Quarter is now home to eight curated works that will take visitors through the precinct via a public art walk.

Broached Commissions is the creative director of the public art throughout the Lendlease project, and this latest investment in its creative arts and culture serves to further intrigue visitors to the precinct.

Among the diverse works that have recently been showcased are sculptures and installations, with all produced by Australian-based artists.

The rich First Nations history within the Docklands location has also been heavily reflected and concentrated on within all of the artworks that now permanently stand at the precinct.

Standing high in Melbourne Quarter, with its best view being from the corner of Flinders St and Wurundjeri Way, is the *Embodied* artwork sculpture by artist Grace Lillian Lee.

The work is Ms Lee's first-ever public art commission, and she has reflected on her Torres Strait Islander heritage to showcase a symbolic work that represents Dreamtime stories.

The main sculpture within the *Embodied* artwork is an ode to Binbeal who is the god of the rainbow in Australian Aboriginal religion and mythology.

She has also used her fashion designing skills and training within her work to feature a laser-cut weave pattern in the metal to represent the Torres Strait Islands' weaving technique.

Closer to the ground, and found in TiTree Park, is Melbourne-based artist Emily Floyd's *Grass Parrot Family* sculptures.

The work has been carefully curated into the landscape of the urban park and is there to further engage children with the history of the site which was once a garden home to a variety of plants and birds that were taken care of by First Nations people.

Other works in the collection are *Your Lordship Has Been Fortunate* by John



▲ Grass Parrot Family by Emily Floyd.
Photo: Peter Bennetts.



▲ Colourama by OCULUS and Broached Commissions.
Photo: Peter Bennetts.



▲ Embodied by Grace Lillian Lee.
Photo: Peter Bennetts.



▲ Gunpowder Empires by U-P.
Photo: Peter Bennetts.

Warwicker, *Colourama* by OCULUS and Broached Commissions, *Stumped* by Trent Jansen, *Gunpowder Empires* by U-P, *Landscape Amnesia* by Stanislava Pinchuk and Reko Rennie, and *Fire* by Yhonnie Scarce.

These bright, engaging and meaningful works can also be found at One Melbourne Quarter lobby, Gunpowder Walk and Melbourne Square. ●

For more information:
melbournequarter.com/about/publicart

Docklands' chance to showcase the padel craze

SPORT

After only opening at the start of the year, Melbourne's very first padel courts on Lorimer St have become the selected location for the final leg of the 2022 Australian Padel Tour.

Home to the city's first paddle tennis club "One Padel", the two-day tournament on October 8 and 9 will showcase some of Australia's best padel players as they compete within the Melbourne Classic Australian ranking points tournament.

"We will see interstate players and local Melbourne players come together to not only battle it out for prize money and trophies, but receive national ranking points," One Padel co-director Jason Gasper said.

"We see this developing into a premier padel tournament and a lead into professional and international tournaments in the near future. We [also] see this as the beginning of a huge series of events to come, especially with summer coming soon."

Showcased as a sport for all, paddle tennis, or padel, is seen as a social sport that is easier to get a grasp on than tennis. The sport is also a mix between tennis and squash due to the equipment and walled boundaries.

As the tournament approaches, One Padel is highly encouraging everyone to attend or have a go at playing themselves in one of the three categories making up the tournament – Open Mens, B Mens and Open Womens.

A highly anticipated event, the Melbourne Classic tournament is a collective partnership between One Padel, Tennis Australia, Development Victoria and Auspadel.

"For the spectators, it will be an exciting vibe with music, food and drinks available and plenty to keep everyone entertained between matches," Mr Gasper said.

"The padel courts at Docklands host a unique city backdrop and with the covered courts, the weather won't deter anyone from having a great time watching what will be a unique and fun event."

To register: onepadel.com.au/tournament ●



Victorian Opera 2018 Lorelei © Pia Johnson



COSTUMES TAKE CENTRE STAGE

Collins Place exhibits the Victorian Opera Costume collection as part of M/FW Fashion Capsule Series

This capsule is part of the M/FW Fashion Capsule series presented by Creative Victoria and showcases the work of three talented designers from different productions.

On display in the forecourt at Collins Place as part of M/FW from 13th September – 18th October.

Visit collinsplace.com.au for details.

M/FW

Melbourne Fringe Festival turns 40

WORDS BY *Carol Saffer*
ARTS & CULTURE

The 2022 Melbourne Fringe Festival theme “it’s about time” is appropriate for an event that has 40 years of history to celebrate and three lost years to make up for due to COVID.

This year’s first in-person Fringe Festival kicks off with an enormous free opening night 40th birthday party on October 6 and runs through to Friday, October 23.

Dockland residents are in for a treat with **PENDULUM**, a site-specific contemporary dance event created by Lucy Guerin Inc and Matthias Schack-Arnott and presented at the unique Shed 21 at Yarra’s Edge running from October 15 to 22.

It is a meditation on time with amazing views and unique art where dancers move in sync with a field of suspended bells that hum, glow and toll in this movement-driven performance.

As this formidable intergenerational ensemble of women dances with time, every rise and fall reveals the strength and vulnerability of the human form.

Melbourne Fringe creative director and CEO Simon Abrahams said the expanded program of new exhibitions, dynamic public art and brand-new art precincts made it the most ambitious festival.

“Through this festival, we’re writing a history of the future,” he said.

“We’ve centred free events as our birthday gift back to the city, including free participatory public artworks and, of course, the return of our iconic Fringe Parade.”

On Saturday, October 15, from 3pm, join or watch the parade of community groups, marching bands, trade unionists, dog walkers, drag queens, fashionistas and the public, march along Lygon St from Faraday St to Argyle Square.

The Square is the scene for a block party that will rock on until late, with two live stages featuring Fringe acts and live music, roving entertainers, and a reprisal of the famed Waiters’



*Dockland residents are in for a treat with **PENDULUM**, a site-specific contemporary dance event created by Lucy Guerin Inc and Matthias Schack-Arnott and presented at the unique Shed 21 at Yarra’s Edge running from October 15 to 22.*



▲ *Bernie Dieter’s Club Kabarett.*

Race that will keep the celebrations going.

With a long list of exhibitions and performances by extraordinary artists and organisations, there are more than 450 events planned for clubs, theatres, galleries, computer screens, parks, and bars of Melbourne.

The return of the Festival Hub at Trades Hall is greatly anticipated as well as the introduction of a Festival Park at Queen Victoria Market.

Deadly Fringe, Melbourne Fringe’s First Nations program, features brand-new works by senior and established First Nations artists exploring time, past, present, and future concepts.

Minister for Creative Industries Steve Dimopoulos said, “Throughout its 40-year history Melbourne Fringe has provided a platform for so many of Australia’s artists and creative leaders, allowing our independent creative community to take risks and bring their work



to the legendary Fringe audience.”

“Venues and locations across the CBD will be electrified with creative experiences while the flow-on effects of hundreds of festival goers each night enjoying the city and its restaurants and bars will be enormous.”

Productions by LGBTQIA+ artists, including 290 trans and gender diverse artists, account for more than 51 per cent of the shows at the festival, while 238 deaf and disabled artists make up 13 per cent of festival events. ●

For more information:
melbournefringe.com.au



Carol Saffer
JOURNALIST
CAROL@HYPERLOCALNEWS.COM.AU

Free Navaratri Community Picnic 2022

Dance your heart out!
Music - Garba & Dandiya - Dance workshop and performances

Find out more and register here:





Yoga and Pilates

Term 4 at Melbourne City Marina starting soon!

Sunday 8.30am Yoga - 9th Oct
Full term (8 sessions) = \$157.60

Wednesday 6pm Mat Pilates - 12th Oct
Full term (8 sessions) = \$157.60

Concession rates available

Sign up for the full term before 9th Oct and receive a 20% discount!



Docklands Repair Cafe

4th Sunday of every month 2pm-5pm
at the Hub @ Docklands

Social Fishing Club

Wednesdays 3pm - 5.30pm **Beginners Welcome!**



DOCKLANDS
Neighbourhood House
Shop 2/4 Wharf St, New Quay
Drop in 12 - 6pm
Wednesdays - Fridays

To find out more call The Centre on 9328 1126

Scan the QR code to follow us on Facebook and stay up to date on all our activities



A project by **the centre**  

Canoe project has dual purpose

“
”

A father and son team is building an Australian-designed canoe from scratch and they don't seem to be arguing about where the pieces fit.

WORDS BY Rhonda Dredge
COMMUNITY

Robert Harper is a dentist and Andrew is a cabinetmaker turned project manager.

They started in early September but 20 minutes into their first session Andrew had to leave.

Robert was quite accepting because Andrew had to take his partner to a hairdressing appointment.

“With blokes we communicate by doing stuff together,” Robert said, and they're now well into the project, although it could take until Christmas to complete.

They've raided the dental practice and improvised with tongue depressors to clean off epoxy resin from the joints.

“I want it to be perfect because my father-in-law and brother-in-law are builders. They'll judge me and I'm looking for approval,” Robert said.

The pieces have been cut out of marine ply and holes drilled by the Wooden Boat Centre down at North Wharf.

“This is a centre of excellence and industry. We couldn't do it without them. All of the materials are provided,” Robert said.

The project, which has so far involved con-



▲ Robert and Andrew Harper on the job at The Wooden Boat Centre.

necting the sections with cable ties, is a bit of a showcase for his talents.

“I'm using it to demonstrate my manual dexterity. If I fill a back molar no-one sees my handiwork.”

Robert said that his dad was an electrician, and he inherited his good hands. When Andrew was a kid, they were very active, travelling and camping, and the canoe suits this lifestyle.

“I got off the tools a few years ago,” Robert said. “I've got a week off between projects. We stop for lunch, sit out in the sun and watch the world go by.”

Their down-to-earth style is a refreshing counterpoint to the large nautical projects berthed nearby at the wharf with their large budgets.

“Ours is pretty organic. We've got the tar, varnish, hemp. It's all wood, all nature,” Robert said, getting up close to the *Alma Doepel* to smell the tar and admire the work.

“It's inspiring,” he said, before returning to the manual for his own small vessel, which is dual purpose in that it has both a sail and paddle. ●



Rhonda Dredge
JOURNALIST
R.DREDGE@HOTMAIL.COM

New exhibition celebrates our rich maritime past

EVENTS

Boating enthusiasts visiting the Docklands Boat Show from October 20 to 23 will be treated to some of Melbourne's rich maritime history with the pop-up *Maritime Moments* exhibition being hosted aboard the *Lady Cutler*.

Thirteen pictures depicting maritime history have been assembled by the Melbourne Maritime Heritage Network (MMHN) which will show a contrasting look at how Melbourne's forebears traversed the Yarra in the late 1800s and early 1900s.

MMHN tourism advisory group chair Martin Dixon said that Melburnians needed to delve into its rich maritime history to “help keep this flame alive”.

“It is important we remember the city's rich maritime experiences of yesteryear, acknowledging the bustling waterways that connected people and industry through the halcyon days of the 1800s and beyond,” he said.

“The past influences the present and MMHN is keen to ensure that the conversation about our maritime history gathers momentum presenting all Melburnians with a renewed interest in the maritime precinct along the north and south banks of the river.”

Lady Cutler owner Jeff Gordon said he welcomed Melburnians to take a leisurely wander through his ship to enjoy the beauty of the Docklands precinct by “finding their sea legs” and experiencing the pop-up exhibit.

“Melbourne has come alive, and the Boat Show will be yet another way we can celebrate our wonderful waterways right on the doorstep of Docklands,” Mr Gordon said. “I am delighted to be a part of this experience as we trek into our maritime history.”

The *Maritime Moments* exhibition on the *Lady Cutler* will be open from 11am to 3pm each day from October 20 to 23. Refreshments will be available for purchase.

The exhibition is also being proudly supported by the Docklands Chamber of Commerce and the Yarra River Business Association. ●

DOCKLANDS HEALTH

SERVICES AVAILABLE:

- ▶ Physiotherapy
- ▶ Chiropractic
- ▶ Massage
- ▶ Psychology
- ▶ Nutrition
- ▶ Bowen Therapy
- ▶ Pilates
- ▶ Kinesiology
- ▶ Exercise Rehabilitation

Shop 4/860 Collins St, Docklands, 3008
(03) 9088 3228 www.docklandshealth.com.au

BOOK ONLINE
DOCKLANDSHEALTH.COM.AU

MSC **THE MISSION TO SEAFARERS**

MARITIME ART PRIZE & EXHIBITION

SEP 30-OCT 16

12pm-8pm

free entry

717 Flinders St, Docklands 3008
gallery.missiontoseafarers.com.au

PORT PHILLIP SEA PILOTS LEADING THE WAY | GAC | Victoria International Container Terminal An ICTSI Group Company | AMSA | nc neville & co. commercial lawyers | VIVA Energy Australia | RIVERLEE



Docklands Summit offers chance to reset the precinct with

Continued on page 1.

action” could be made to activate the area while awaiting the pier’s redevelopment.

Mr Cunningham said as part of the regeneration of Central Pier, “there also exists an opportunity for interim activations” along Harbour Esplanade but stopped short of suggesting what ideas could be explored, saying “again, we will be putting that on the table as part of the consultation process.”

According to a City of Melbourne report in September, which provided an update on the summit, DV had advised that community engagement on Central Pier’s concept plans would begin in December to inform a business case and a subsequent state budget bid.

The state government announced in August that it would lodge a heritage permit application to demolish the 100-year-old structure after its permanent closure in late 2019 due to safety concerns.

DV has maintained it would work closely with Heritage Victoria, the City of Melbourne, the community, and other key stakeholders to identify opportunities for the revitalisation of Central Pier and adjacent waterfront areas to create one of “Australia’s premier waterfront destinations”.

According to the council’s report, the redevelopment of Central Pier and Harbour Esplanade was a “major city-shaping project that will redefine the city’s connection to Victoria Harbour and reframe community perceptions of Docklands”.

The issue was at the centre of discussions held at the summit, which saw various state government departments as well as developers and major landowners, local businesses, representative groups, and other stakeholders gather to participate in various workshops.

The City of Melbourne hosted the event after councillors voted in February “to elevate the urgent need for action and generate enthusiasm and outcomes for the regeneration of Docklands”, as the precinct had struggled to bounce back after the pandemic – which had been exacerbated by the closure of its two biggest landmarks: Central Pier and the Melbourne Star Observation Wheel.

A report last year found the pier’s closure alone – which formerly housed pubs, restaurants, and tourism operators – would cost Melbourne’s economy \$865 million and 1500 jobs by 2024.

In addition to Harbour Esplanade and Central Pier being a focus for the precinct’s longer-term vision, preliminary feedback to the council included “simplifying the governance” in Docklands, celebrating the water as a unique element of Docklands, strengthening the identity of Docklands, supplementing existing events with regular community or place-based activations, and creating more green spaces by

“

“I think there’s a real opportunity to do more of that and bring that level of community infrastructure,” he said, adding the community also needed a “strong voice” in the next two decades to contribute to the “stitched in and authentic part of the overall mental map” of the city and Docklands.

”

exploring pocket parks, biodiversity links, and “softening the existing built form”.

Public realm improvements such as landscaping, seating, and lighting were also highlighted as was wayfinding and improving navigation between precincts. Furthermore, the feedback called for an “anchor institution or drawcard destination” to change public perception and improve connections to Docklands from existing suburbs to the north and east.

Council management will review the feedback and identify short-, medium- and longer-term projects before a report comes back in October, providing a comprehensive overview of the summit.

The findings will include “clear actions and maintain engagement and the involvement of the Docklands community” through an online Neighbourhood Portal due to be launched in October.

The City of Melbourne hosted focus group sessions involving more than 80 people from August 8 to 21, which was the first phase of the Docklands Summit.

“The key takeaways we heard [were] that locals love Docklands – the locations, what is on offer and the services they frequently use,” a summary report said, but “the key issue is that this does not align with the public perception of the Docklands and what might appear in the media.”

Speaking to *Docklands News* after the summit, Lord Mayor Sally Capp said there was a “broad range of really good ideas” discussed, adding the “energy in the room was fantastic”.

“This was an opportunity for everybody to come together and listen to and hear from each other,” she said.

“The fact that the summit went through both hearing ideas and then prioritising those ideas,

is for the first time we’ve done something like that with everybody in the same room, which was fantastic.”

In addition to Mr Cunningham, other panelists who shared their experiences in Docklands included Lendlease state lead and executive development director Brian Herlihy; AFL property development general manager Matthew Chun; Ashe Morgan development director Andrew Whiteside; ANZ talent and culture group executive Kathryn van der Merwe; Docklands Primary School principal Adam Bright; and Yarra’s Edge resident Jenny Leyva de Loryn.

Mr Chun said that while Marvel Stadium was an asset, it had over time become a “bit of a blocker” but added “we’re creating what we hope to be the Fed Square of Docklands”.

“We’re trying to make the stadium an asset that everyone can use so it’s a community asset, we see it as a community asset, and we want everyone to enjoy it, not just on event days,” he said.

“We are really changing the narrative of this stadium and this precinct and hopefully it’s the start of getting people to come from the city and other places and dwell in Docklands.”

In terms of driving initiatives to support Docklands’ revitalisation, Mr Herlihy said Lendlease would strive to “create something that’s authentic to the city” and believed there was an opportunity bring together the “culture and creative uses” in Docklands “not just for us but for the whole precinct”.

He said partnerships with Development Victoria, the City of Melbourne, and private developers were “really important” in community projects, with the Library at the Dock being one example.

“I think there’s a real opportunity to do more of that and bring that level of community infrastructure,” he said, adding the community also needed a “strong voice” in the next two decades to contribute to the “stitched-in and authentic part of the overall mental map” of the city and Docklands.

Ms van der Merwe said bringing office workers back was important and ANZ would find ways to “collaborate and do those things we need them to do when they come into the workspace”.

“We recognise the world of work has changed, people really do value working from home and we respect that and want to continue to encourage that,” she said.

“We’re not trying to compete with working from home, we’re trying to make it an experience when you come into the workplace feel different ... that’s about coming in together, spending time together in spaces to have shared meals, shared drinks after work.”

Speaking of his aspirations for Docklands’ future, Mr Whiteside of Ashe Morgan said, “We actually need to reimagine what we have and where we’re going.”

“We see our future as much more connected to North Melbourne and the north-west of Melbourne. All that investment that is going on in Arden and Parkville, all those people want to come to the water ... that is another 200 to 250 hectares, that’s another Melbourne CBD of people who are creative knowledge workers who can access the water ... it will help give us an underpinning.”

The future of Docklands Primary School was also discussed, with principal Adam Bright saying the school’s projected growth from 466 students to 1000 in coming years would pose challenges, and that they were currently working with the Department of Education “on what our school will look like next year”.

“Our kids deserve community spaces that they can play in and congregate in before and after school, they deserve access to a swimming pool in the suburb,” he said, adding “it would be fantastic” to be able to use spaces like Marvel Stadium.

Mr Bright said opening the brand-new school during the pandemic had also been challenging, noting, “we haven’t been able to link with our community” and while students could use Ron Barassi Snr Park, ideally the school needed “pocket parks” closer to its grounds.

In other talks, Yarra’s Edge resident Jenny Leyva de Loryn said while she loved the “community feel”, she believed better connections were needed as some people “feel ashamed” and “don’t actually tell people they live in Docklands”, which was “really saddening because I love living in Yarra’s Edge”.

“We do see ourselves as very different to the other side. One of the differences is we aren’t allowed to come to the school,” she said.

When asked how better connections could be made, Ms Leyva de Loryn said, “so many come to Marvel Stadium, but then what do they do? They go home.”

But when she suggested holding a Yarra’s Edge neighbourhood day, she said “I don’t want to do it for all of Docklands.”

In chairing the panel, Mr Hanney spoke briefly but did express excitement for Greenline – the Lord Mayor’s passion project that would see a four-kilometre promenade built along the north side of the river from the Bolte Bridge to Birrarung Marr, which he described as “really quite exciting in terms of the numbers of people it will bring – not just into Melbourne but right all the way to Docklands”.

He also gave praise to Mr Chun’s “great suggestion” of encouraging “people invested in this community” to spend their money locally.

While Mr Chun said the Docklands Dollars initiative was critical to this, he emphasised “the more money that we can keep in here, the more people we can keep in business, the more shops that are open the better the vibe is going to be”.

However, in his closing remarks, Mr Hanney



Docklands reacts with mixed feelings after summit

WORDS BY *Brendan Rees*
COMMUNITY

Community groups and stakeholders have welcomed the Docklands Summit, saying they are “extremely keen” to continue their involvement in future decision making.

However, the Docklands Representative Group (DRG) has warned outcomes from the summit, which was held on September 2 at Marvel Stadium, were “only part of a future plan” after noting the event’s focus was “primarily upon increasing visitation to Docklands”.

“Given this, the DRG commends the FMC’s [Future Melbourne Committee held on September 20] decision to ensure ongoing engagement with the Docklands community as it is imperative that visitation priorities do not automatically supersede issues already identified by Docklands community as important, such as safety,” a DRG spokesperson said.

While the spokesperson said the DRG was pleased to have participated in the summit’s workshops and discussions, it also pointed to other matters that needed further consideration.

This included an “underappreciated economic importance of residential strata” that the DRG believed was represented in a poster distributed to participants at the summit detailing a snapshot of Docklands’ statistics and COVID-19 impacts.

“The DRG notes that the vacancy rates cited for the residential sector were out of date with no source stated,” the spokesperson said.

The DRG said while it was pleased the newly established Docklands Owners’ Corporation Network was included, the shared statistics “contained no information on the economic contribution of the strata sector in Docklands, which directly employs building managers, concierge and security staff, who daily work in Docklands”.

According to the spokesperson, this sector brought trades to Docklands and an array of other on-site service providers such as gardeners and window cleaners.

“Yet, there is no recognition of this economic contribution. We strongly encourage a more holistic appreciation of the socio-economic composition of Docklands.”

On a final note, the DRG “found puzzling” the choice of the resident representative for the panel discussion, saying the resident, Jenny Leyva de Loryn of Yarra’s Edge, made a “key point that she believed Yarra’s Edge should separate from Docklands”.

“Given the panel had only one resident, it is disappointing that a person not wishing to be part of Docklands was chosen to speak on behalf of Docklands.”

The DRG’s comments come after Yarra’s Edge launched a petition in 2020 calling for the precinct to have its own identity and ease confusion between its fellow postcode 3008 neighbours north of the river.

Docklands Chamber of Commerce chief executive Shane Wylie said the chamber was “very thankful” to participate in the summit and hoped to see Docklands regarded as “a destina-

“Given the panel had only one resident, it is disappointing that a person not wishing to be part of Docklands was chosen to speak on behalf of Docklands.”



tion that organically attracts visitors, not just in episodic activations”.

“We know that the landscape has dramatically changed in Docklands. The corporate economy is unlikely to ever return in the way that it was and therefore we need fresh ideas,” he said.

Mr Wylie noted the event “clearly and strongly” showed action on Central Pier and a “holistic vision for integration with Harbour Esplanade as the number one outcome”.

He supported the AFL’s plan to activate Marvel Stadium which would see it opened to the community and linked to Harbour Esplanade and Central Pier “to become a world-class destination”.

However, Mr Wylie said the chamber’s “small concern” was that the average Docklands resident may not feature in the outcomes of the summit.

According to the Australian Bureau of Statistics 2021 census, the average Docklands resident is of a multicultural background, 32 years old, a dual income household, renting and interested in starting a family or has one.

“We hope that their input was captured in the entire process even if it wasn’t evident at the actual summit,” he said.

Chair of the Melbourne Maritime Heritage Network (MMHN) Jackie Watts said it was pleasing speakers had referenced activation proposals long advocated by the MMHN.

But she questioned if the management of the Docklands precinct was beyond the responsibility of Development Victoria, saying, “should the Docklands precinct now sit alongside other precincts within the City of Melbourne? Would this shift of responsibility enable a more efficient acceleration of desperately needed precinct activation?” ●

Central Pier taking precedence

told the audience that addressing short-term priorities for Docklands was just as crucial after conceding these types of events “can often be a talkfest and if you leave here and nothing happens, the next time we come together people go ‘please, not again.’”

“The key to this is can we let the top 10 issues [take priority] and bear down on them; actually make them happen, and collectively – not just the responsibility of Development Victoria, not just the responsibility of Ashe Morgan or all the residents, or ANZ or Lendlease or the school,” he said. “[It’s] all our responsibility in terms of if we work together and lean into some of these – what might we be able to achieve in a very short period of time.”

The Lord Mayor said the summit overall had shown there was a “shared desire to move forward” with Central Pier being of particular focus, adding DV’s update about what would happen over the next 12 months had “started to really bring some clarity, but also, just to know that it’s a priority for everyone down there”.

Cr Capp was also impressed with the presentation from Mr Chun and the AFL’s aspirations for creating a community space at Marvel Stadium as part of its major revamp, which would “really open it up” so “it’s not just activated on game days”.

Other “key elements” Cr Capp took away from the summit was the need to “help people understand the DNA of Docklands” as a waterfront city.

“We often refer to Docklands as one big, enormous area and it’s confusing for people because if you’re not from Docklands, you don’t understand the nuances and the neighbourhoods within Docklands, and so starting to really bring to life

the various areas and precincts within Docklands is a good important step,” she said.

The Lord Mayor said the report before council at the Future Melbourne Committee meeting on September 20 “brings the whole sort of conversation together and sets us up for next steps”.

Deputy Lord Mayor Nicholas Reece told the council meeting that “one of the key takeaways from the summit was the powerful reminder to me that we do have a strong existing identity and character that has developed naturally in Docklands”.

“I do think there’s a huge opportunity for us to leverage a really important vibrant, emerging community, which I think will actually be part of the secret source of a vibrant, prosperous, Docklands,” he said.

DV’s Niall Cunningham said there would be “ongoing conversations” to “understand what it is people really want in terms of the identity across the neighbourhood”.

Cr Jamal Hakim, a Docklands resident and avid advocate for the community, said while Docklands was the “water gateway to our city”, there was a “need to celebrate Docklands more”.

“We need to improve that public perception in the area. It’s been the target of criticism for far too long,” he said, and this was “about drawing a line in the sand and moving forward with all stakeholders”.

“We heard that large events and activations such as Firelight have been terrific for Docklands and we need to bring in through some smaller scale community-based initiatives as well, which is terrific to hear from our community and something that’s obviously being considered.” ●

 **BarryPlant**

2 Docklands Offices

Means better service, better results and happier clients.

Selling, Buying or Leasing, you must talk to us.

Longest established Docklands real estate brand and member of a 70 plus office network ensures we talk to more buyers.

Call for your free no obligation market appraisal of your Docklands property now!



Geoff White
Branch Manager
0418 330 474

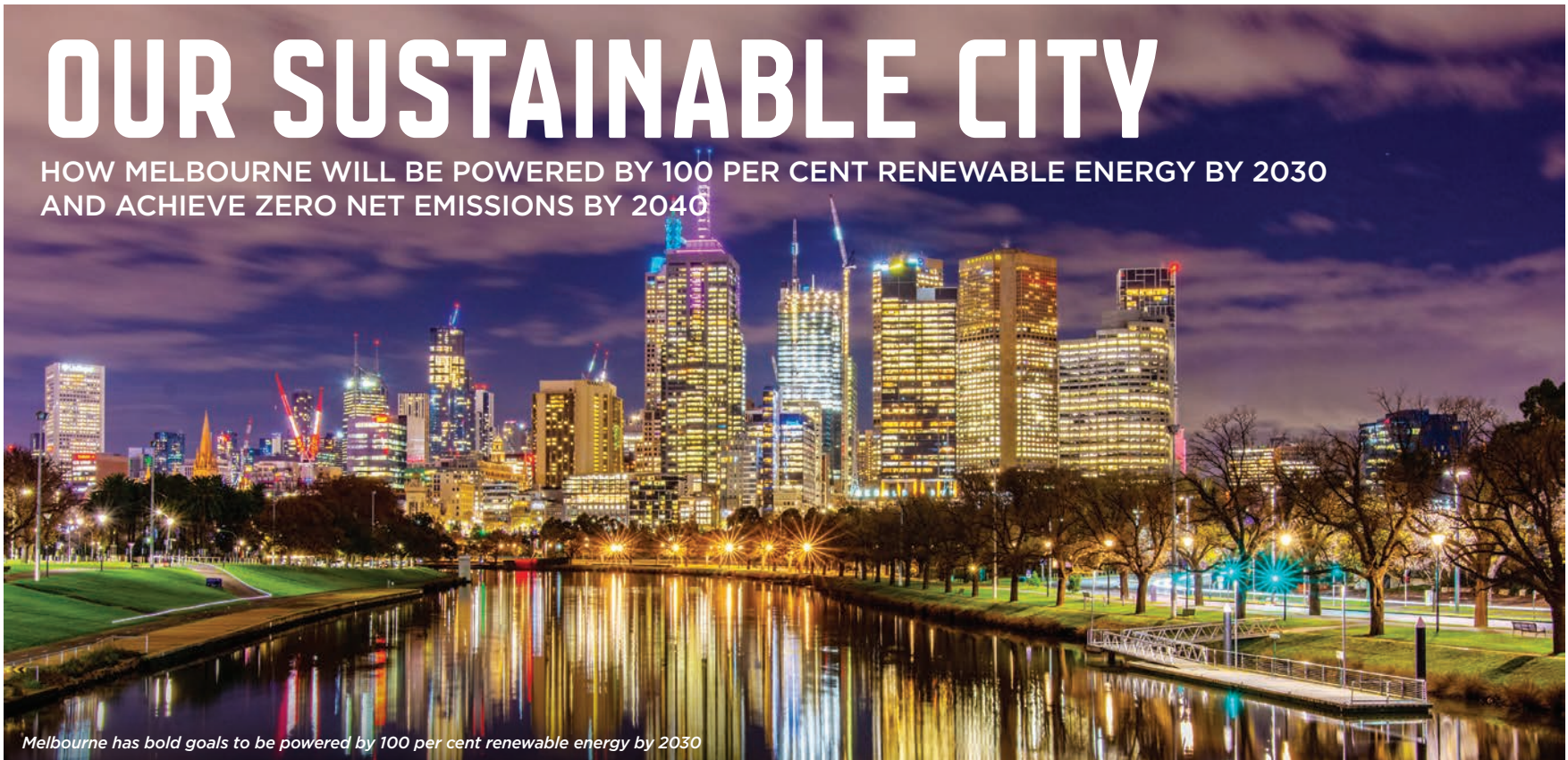


Alice Geddes
Sales Manager
0421 981 981



Steven Heaven
Associate Director
0413 999 979

ADVERTISEMENT
Your City of Melbourne community update



OUR SUSTAINABLE CITY

HOW MELBOURNE WILL BE POWERED BY 100 PER CENT RENEWABLE ENERGY BY 2030 AND ACHIEVE ZERO NET EMISSIONS BY 2040

Melbourne has bold goals to be powered by 100 per cent renewable energy by 2030

Cities consume about 75% of the world's energy. So it makes sense that cities are where the climate crisis can be averted.

Like all cities around the world, Melbourne is facing a host of challenges that call for innovative solutions to ensure we retain our famed liveability.

Chief among those challenges is arguably the greatest challenge of our time - climate change and its impacts on communities.

By 2030, the CSIRO predicts Melbourne will be significantly affected by warmer temperatures and heatwaves, lower rainfall, intense storm events and flash flooding.

By 2070, we are predicted to be experiencing more than double the number of heat waves, an 11 per cent reduction in rainfall and a significant increase in storm events. These climate

changes will have a huge impact on businesses and the community.

The City of Melbourne strives to be a leader in responding to climate change, reducing our carbon footprint, building resilience and increasing urban biodiversity.

Melbourne's eco-city credentials are strong. We are proud to be a member of the C40 Leadership Group and the 100 Resilient Cities Network.

Being recognised internationally for our efforts addressing climate change means we also have the great privilege of setting an example for other cities.

This month, Lord Mayor Sally Capp will travel to Buenos Aires, Argentina for the C40 Cities Climate Leadership Group (C40) World Mayors Summit 2022.

It is the first major climate convention of city leaders since COVID-19, and

precedes COP 27 in Egypt in November.

At this summit, the Lord Mayor will share the City of Melbourne's biggest and boldest goals to fight climate change.

'The City of Melbourne will be a city powered by 100 per cent renewable energy by 2030, and reach zero net emissions by 2040,' the Lord Mayor said.

"Since declaring a climate and biodiversity emergency in 2019, we've worked tirelessly to transition our city to a more sustainable and environmentally friendly place.

'We are committed to being a global leader on climate action and are delivering emission reduction initiatives that are commensurate with that declaration,' she said.

Our organisation directly contributes less than 1 per cent of the municipality's emissions and has limited control to regulate the remaining 99 per cent.

That's why we're using our position to influence the community to take action too.

We're setting the standard in climate action and sustainability in many ways.

Our operations have been certified carbon neutral every year since 2012.

Our major events such as Moomba, Melbourne Fashion Week, Melbourne Music Week and Melbourne Knowledge Week are certified carbon neutral too.

GREEN POWERED

In 2017, the City of Melbourne led the transition away from coal through a 10-year, \$200 million renewable energy group purchase agreement.

In an Australian-first, the Melbourne Renewable Energy Project saw a group of local governments, universities and corporations collectively purchase renewable energy.

We've now delivered two energy purchasing agreements, reducing the equivalent of 5 per cent of the city's emissions - leading Melbourne to be the first capital city council in Australia powered by 100 per cent renewable energy.

Energy is flowing into the power grid from the wind turbines at the Pacific Hydro wind farm at Crowlands, near Ararat.

Every light on our streets, every treadmill in our gyms and every barbecue in our parks is now powered by renewable energy.

This model has been replicated across Australia and enabled production of 8GW of renewable energy.

POWER MELBOURNE

Power Melbourne will establish a network of coordinated neighbourhood-scale batteries to deliver more affordable energy into the grid.

Environment portfolio lead Councillor Rohan Leppert said 'we're going big with Power Melbourne'.

'Delivering at a scale that is large enough to support the grid, participate in energy markets and provide a meaningful benefit to our community,' Cr Leppert said.

'Neighbourhood battery technology is in its infancy in Australia, and we're proud to be leading the way in creating cleaner energy solutions in Australia with Power Melbourne.'

Many residents and businesses in our municipality are locked out of the renewable energy market. Those who rent or live in an apartment are often unable to install solar panels, and we know from market research that selecting an affordable green power option can be difficult.

Through Power Melbourne, we'll install a network of batteries around the city to create a virtual energy grid.

Local rooftop solar will charge the batteries, allowing renewable energy to be stored, then released back into the electricity grid when it's needed most.

'Not only will Power Melbourne provide access to affordable green energy for tens of thousands of local residents and small businesses, it will also reduce emissions and contribute to a more sustainable future,' Cr Leppert said.

We're exploring suitable locations for Power Melbourne batteries on council-owned buildings, including Queen Victoria Market, Library at the Dock, Kensington Recreation Centre and Council House 2 in the CBD.

We'd like to know what you think about neighbourhood batteries and how we can make it easy to switch your energy bills to a Power Melbourne plan.

From 26 September to 31 October, have your say at participate.melbourne.vic.gov.au/power-melbourne



We're exploring suitable locations for Power Melbourne batteries on council-owned buildings

ADVERTISEMENT
Your City of Melbourne community update

ZERO CARBON BUILDINGS

More than 60 per cent of emissions in Melbourne come from commercial buildings.

We've recently formed a partnership with universities and private businesses to reduce emissions from these buildings.

We're taking a lead role pursuing more sustainable planning requirements to ensure our neighbourhoods and buildings are built to the highest quality and environmental standards, and aligned to best practice in the Australian industry.

We've introduced planning scheme amendments to ensure new development contributes to achieving our sustainability and green infrastructure goals, and ultimately helps to tackle the climate and biodiversity emergency.

Now we're committed to supporting and refurbishing older buildings to improve their energy efficiency.

BREATH is an innovative new retrofit project which aims to improve air quality and ventilation within commercial buildings and move the city closer to its goal of zero carbon buildings.

The project pilot tested and evaluated three types of ventilation systems over three months.

It found simple changes to ventilation systems can significantly decrease the transmission of COVID-19 and reduce energy consumption in office buildings. It's given us the knowledge to predict the best type of retrofit to achieve these aims.

We're set to begin consultation with the building industry so we can work together to ensure buildings in our municipality are zero carbon ready by 2040.

The initial phase will focus on commercial buildings, including high rise residential apartments which contain commercial space.

From 4 October, share your thoughts with us at participate.melbourne.vic.gov.au



We're consulting with the building industry to ensure city buildings are zero carbon ready by 2040

ZERO WASTE CITY

We are committed to reducing food waste and diverting it from landfill by implementing food and garden organic waste solutions tailored to different buildings within the municipality.

We are aiming to increase overall waste diverted from landfill by 50 per cent by 2025. More than 22,000 City of Melbourne households use our Food and Garden Organic (FOGO) Service.

As part of our mission to be a Zero Waste City, we have already diverted more than 1200 tonnes of organic material from landfill – that is the equivalent weight of 46 trams.

Our waste trucks then pick up the garden waste for processing.

Here, it is turned into nutrient-rich compost to be used on Victorian farms and City of Melbourne parks and gardens.



Our FOGO program is aimed at moving towards a more circular economy

We continue to roll out Food and Garden Organic service across the municipality – with the service being extended to high-rises next.

Our FOGO program is aimed at moving towards a more circular economy, where we design out waste wherever possible, and reuse and repair items as a priority.

From 3 October to 27 November, have your say on how we can incentivise waste reduction and encourage recycling, at participate.melbourne.vic.gov.au/waste-charge

COOLING OUR CITY

Our goal is to cool summertime temperatures in our city by 4C by 2040.

We'll achieve this by doubling our tree canopy to 40 per cent and increasing the permeability of our city's surfaces.



Our goal is to cool summertime temperatures in our city by 4C

We plant 3000 trees every year to reduce the heat island effect in the city.

And we continue to work with developers to incorporate more green roofs in the CBD and to advocate for more greening in the city.

Our Urban Forest Fund provides financial support to new greening projects that otherwise would not be funded.

We'll soon announce the latest Urban Forest Fund grant recipients to create a greener, more sustainable city.

'City greening projects like these are essential to adapting our city to a changing climate, supporting its continual transformation into a thriving urban forest,' Cr Leppert said.

'Together, these projects will increase our climate resilience by improving biodiversity and canopy cover, reducing air pollution and mitigating impacts of the urban heat island effect.'

GREENLINE TO BE A COOL ROUTE

While we work to cool the city, we're also exploring new ways people can keep cool when moving about the city.

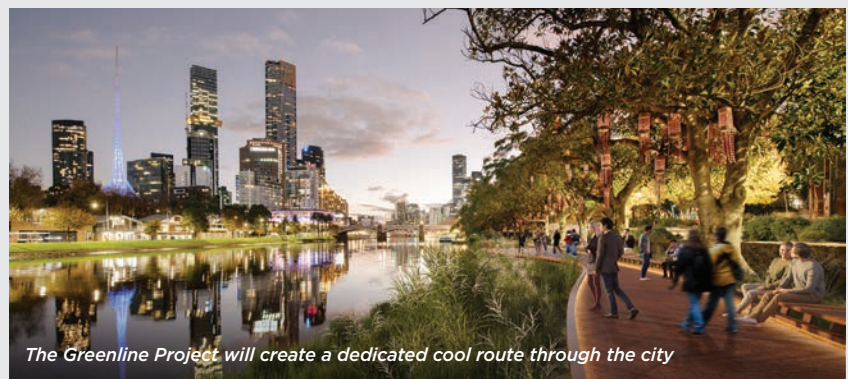
We've developed our Cool Routes website to enable users to plot thermally comfortable journeys walking and cycling journeys across the municipality.

Cool Routes takes into account the time of day, the city architecture and surrounds to give users not necessarily the fastest route, but the route best protected from the sun and heat.

The Greenline Project will transform the northern bank of our city's waterway, delivering a continuous four-kilometre promenade of parks and public space. It will become a designated cool route.

The project will return areas of harsh concrete to its natural riverbank state, improving the flora and fauna of our river and increasing canopy cover by 40 per cent along the northbank.

Not only will it deliver a \$60 million benefit from protecting and enhancing the environment but it will also decrease discharge to improve water quality, improve soil quality and enhance greening, and establish ecological corridor for habitats.



The Greenline Project will create a dedicated cool route through the city



KEEP IN TOUCH

To stay connected with all the latest news from the City of Melbourne, follow us on social media and subscribe to *Melbourne* magazine online at magazine.melbourne.vic.gov.au

Connect with us

- /cityofmelbourne
- @cityofmelbourne
- @cityofmelbourne



Council meets in Fishermans Bend, as recurring theme of transport rings “loud and clear”

WORDS BY *Sean Car*
COUNCIL AFFAIRS

Calls for urgent funding for public transport connections to Fishermans Bend in the form of tram and train services were again at the centre of discussions last month, as the City of Melbourne met with locals in the precinct on September 20.

As part of its “neighbourhood series” of Future Melbourne Committee (FMC) meetings held monthly in different suburbs across the municipality in 2022, councillors gathered at the Australian Road and Research Board (ARRB) on Turner St in September.

The City of Melbourne is one of two local governments, along with the City of Port Phillip, governing what is Australia’s largest ever urban renewal project, overseeing the Lorimer precinct and the future Fishermans Bend employment hub north of the M1 Freeway.

The September 20 meeting heard presentations from various stakeholders about current plans in Fishermans Bend, namely the University of Melbourne, which spoke about its investment in the future national employment and innovation cluster (NEIC).

The university will begin a staged opening of a new engineering and design campus in 2025 at the former General Motors Holden (GMH) site, which was purchased by the Victorian Government to form the heart of the NEIC.

But following her presentation to the meeting, the university’s Professor Julie Willis said improved public transport connections were “essential” in making its Fishermans Bend campus a “viable place to be”.

“It’s essential for us to have public transport, many of our students and staff arrive to our other campuses by public transport – it’s something that they expect. It improves the amount of connectivity through to city and makes it a viable place to be,” she said.

“Melbourne is very well served by its public transport, but Fishermans Bend is like a black

spot in the middle of it, with lots of roads going around it but not exactly great connection through public transport.”

“We really hope that we see that connectivity come online over time.”

Other presenters included chief operating officer of the ARRB Richard Yeo, Fishermans Bend Business Forum (FBBF) vice-president Murray Nicol and Fishermans Bend Development Board chair Meredith Sussex.

Mr Nicol said there was a sense among businesses in the precinct of “waiting for further transformation” and that the FBBF was constantly seeking out more information about the next steps from government.

“Fishermans Bend needs leadership from us all,” Mr Nicol said. “Fishermans Bend now deserves its time in the spotlight.”

While supporting the state government’s vision for the precinct of 80,000 workers and 80,000 residents by 2050, Mr Nicol said this vision would only be achieved through “collaboration at all levels”.

“We believe the biggest challenge is the collaboration across the Victorian state government, the City of Melbourne, the City of Port Phillip, the [Fishermans Bend] Taskforce, and also, not to forget, the federal government, in Fishermans Bend becoming a world-renowned area,” Mr Nicol said.

His comments were supported by Meredith Sussex, who highlighted the importance of “partnerships” in her presentation while pointing out the unique challenge of urban renewal in Fishermans Bend, which was largely privately owned land.

“It’s important to acknowledge that Docklands was publicly owned land. Most urban renewal around the world is done on publicly owned land. It is very unusual to be in this situation of proposing a massive urban renewal program in an area where there are 320 different private-sector owners.”

“It is really, really hard to do good urban renewal on privately owned land where development viability is fundamental.”

While supporting the state government’s vision for the precinct of 80,000 workers and 80,000 residents by 2050, Mr Nicol said this vision would only be achieved through “collaboration at all levels”.



In stressing both this challenge and the scale of what was being proposed for Fishermans Bend both in terms of size and population forecasts, she said transport planning needed to be approached differently.

“Generally, we’ve planned transport once the demand is already overwhelming,” Ms Sussex said.

“So, what we’re saying here is that the plans for development are such that the transport will be overwhelming, very soon. And that’s the argument we’re all taking forward from the discussions today.”

Among other key issues raised at the meeting included new governance and funding arrangements for Fishermans Bend, and the release of detailed precinct plans for the Lorimer Precinct, which includes Yarra’s Edge in Docklands.

The council highlighted its Gateway to GMH

project, which is installing new active transport links and street greening along Turner St to the future NEIC, as well as the pop-up Gateway Hub at Shed 21 on Lorimer St among its key initiatives in the precinct.

Acting Lord Mayor Nicholas Reece said the City of Melbourne was “up to the challenge of delivering a project of this ambition and this scale”, and the council would continue to use its powers of advocacy to lobby state and federal governments for public transport.

Lorimer development plans endorsed

In another exciting sign of growth in Fishermans Bend, and specifically the Lorimer Precinct, councillors unanimously endorsed an ambitious development of a Turner St site in Port Melbourne.

Developer Springbank Properties Pty Ltd has submitted plans to the Department of Environment, Land, Water and Planning (DELWP) to construct five new buildings in a “podium and tower format”.

Designed by Rothelowman, the five towers built upon four podiums would range in height from 31 to 50 storeys and are proposed to contain both standard and affordable housing dwellings, office space, retail premises and sports and recreation facilities.

The \$600 million plans have already attracted interest from Australian engineering and construction company Acciona Geotech, which intends to establish its new national headquarters as part of the project’s first stage.

A report from council management said this investment alone was expected to create up to 860 new direct ongoing jobs within five years, and close to 2000 by 2031.

Acting Lord Mayor Nicholas Reece said the plans represented a boost for innovation and the local economy of Fishermans Bend.

“The development will bring a suite of new amenities to this integral growth area, including both standard and affordable housing, office and retail space, as well as the potential for sport and recreation facilities,” Cr Reece said. ●



Melbourne Debt Collectors
Call or email us today on (03) 9329 4455 or
admin@melbdebt.com.au.
Your Debts Are Our Business

Suite 1518, 401 Docklands Drive,
DOCKLANDS VIC 3008

Tel: (03) 9329 4455
Mob: 0447 449 779

Payment on collection only

Review of your terms and conditions for free when you use our services



Giraffe Early Learning Centre Docklands Enrol Now!

- **Flexible orientation period**, tailored to meet the unique needs of each individual child and family
- Beautiful and **large outdoor play areas** grouped by age.
- Nutritious meals freshly prepared by our **in-house chef**.
- **Family focused activities** throughout the year, celebrating many cultural festivals.
- **High staff to child ratio.**
- **Highly qualified team** of educational professionals dedicated to support your children’s learning journey
- **Funded 3 and 4-year-old Kindergarten Program** operating **more than the standard 15 hours a week.**
- **Discounted Daily parking** at "The District"
- **Located** - First Floor "The District" Docklands under Melbourne Star Observation Wheel.

Opening hours: 7:15am to 6:15pm
Ph: 9670 0880
admin@giraffedocklands.com.au
www.giraffedocklands.com.au



Suite 1518, 401 Docklands Drive,
DOCKLANDS VIC 3008

Tel: (03) 9329 3500
Mob: 0447 449 779
W: www.rothlaw.com.au

At Rothwell Lawyers we deliver exceptional legal advice, and always focus on achieving the best outcome for our clients.

AREAS OF PRACTICE

- Business Structuring
- Commercial Law Issues
- Conveyancing
- Debt Recovery and Alternative Dispute Resolution
- Family Law
- Insolvency Advice
- IVOs
- Wills, Estates and Probate



Council to reintroduce dining fees, except in Docklands

WORDS BY *Sean Car*
COUNCIL AFFAIRS

The City of Melbourne is expected to extend outdoor dining permit fee waivers for traders in Docklands until June 30 next year, while providing a 50 per cent discount for parklets in the rest of the municipality.

After supporting hospitality businesses to trade outdoors for free during the past two years, the council says it will look to reintroduce some fees – allowing business owners to choose if they want to continue using their outdoor space.

Councillors were expected to support a recommendation from management at its meeting on September 27, which would see fees reintroduced in all other parts of the municipality except Docklands from November 1.

In “realising revenue of up to \$716,000” the council said the measured return to regular permitting would support “city-shaping projects, events and activations, and initiatives to make the city cleaner and safer”.

And in offering further respite to business owners in Docklands, the council has agreed to continue waiving fees for another eight months – providing \$34,000 in benefits to 107 permit holders.

Docklands Chamber of Commerce executive officer Shane Wylie said it was very supportive of any concessions allocated to Docklands traders during what continued to be a challenging time for the precinct.

“It [waiving outdoor dining fees] is an acknowledgement that Docklands was and is continuing to be hit harder than any other location by COVID and all the associated problems,” Mr Wylie said.

“Hopefully we have a brilliant summer on the way and outdoor

dining makes an impact for all of our traders who are still struggling.”

The council says busker permit fees would also be frozen until June 30, 2023 “to keep the city streets humming with local talent”.

Business owners can also apply for flexible payment plans with the option to pay permit fees in instalments rather than one-off payments, while traders with existing permits can choose to opt out of the program and return parklet and footpath dining areas to the council.

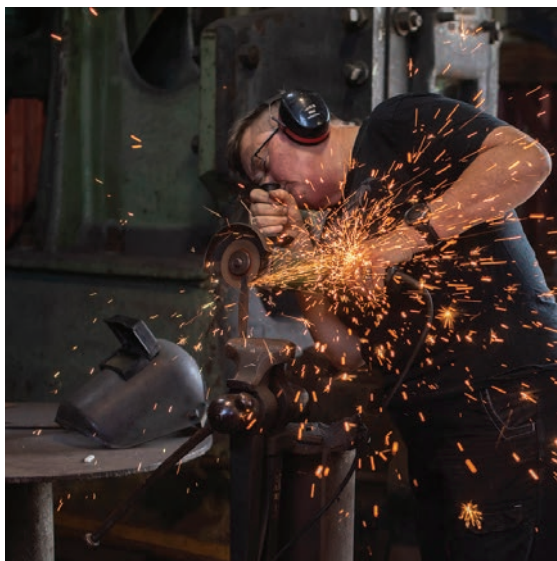
“Parklet infrastructure would be removed at no cost to businesses,” the council said in a statement.

Since October 2020, the council has waived more than \$2.36 million in application and permit fees for outdoor dining and busking and provided \$1.1 million in outdoor dining infrastructure to hospitality businesses.

With the “Extended Outdoor Dining Program”, funded through the \$200 million Melbourne City Revitalisation Fund – a joint partnership between the council and state government – having sustained the city’s “bounce back”, Acting Lord Mayor Nicholas Reece said the staged reintroduction of fees were a reflection of steady increases in foot traffic since June 2021.

“Melbourne is springing back to life. We’re continuing to see steady growth in foot traffic, retail and night-time spend back to pre-pandemic levels. The data tells us that now is the right time to return to our regular outdoor dining permitting processes,” Cr Reece said.

“By gradually reintroducing fees, we can continue to improve our neighbourhoods, build our city-shaping projects and deliver stellar events that make Melbourne the best place to live, work, study and visit.” ●



▲ Anna Madden.

Photo by Murray Enders.

“Equality is not going to forge itself”

WORDS BY *Sean Car*
ARTS & CULTURE

A new photo exhibition featuring at Library at the Dock in October will display powerful snapshots of the women of the Australian Blacksmiths Association Victoria (ABAVic).

Opening at the library on October 12 and running until November 3, *Iron Women* is a free exhibition presented by photographer Anna Madden documenting the stories of women with a passion for blacksmithing.

In posing the question, “what better way is there to cut through a stereotype than with an angle grinder?”, this exhibition dispels the myth of the muscular male with a hammer as a dated concept as women make the trade their own.

Having attended the ABAVic Women’s Group workshops over the course of a 12-month period, Ms Madden said the group, run by women, for women, operated under mantra “equality is not going to forge itself”.

Describing herself as an “emerging artist”, Ms Madden is currently completing a Bachelor of Photography at the Photography Studies College (PSC) and has previously worked as a photographer for *Beat Magazine*, where she concentrated on women in live music.

“I always like to have a little bit of a feminist aspect to the work I do,” she told *Docklands News*.

But after being introduced to the world of blacksmith-

ing by a long-time friend, who is also a member of the ABAVic Women’s Group, Ms Madden hopes her 12-month body of work for *Iron Women* will help to inspire women and spark important conversations.

“The feedback I’ve got when I tell people what I’m doing, personally they’re surprised that blacksmiths still exist – then they’re surprised that there is a whole group of female blacksmiths that meet up regularly,” she said.

“As each member works on their individual projects, the more experienced ‘smithies’ offer guidance and tips on techniques, and create a comfortable, safe and welcoming space. They share their successes and mistakes alike, fostering stronger bonds and a culture of learning.”

With the world of blacksmithing often associated with one now bygone, she said all the photos had a “certain timeless element to them”.

“They could almost have been taken 100 years ago, except for the odd appearance of mobile phones!” she said.

Iron Women, supported by the City of Melbourne, will run at Library at the Dock from October 12 to November 3. An official launch will be held on Thursday, October 13 from 6pm to 7.30pm. ●

For more information:

melbournelibraryservice.com.au

\$1,000 CASH BACK

Your investment requires a little extra and we're prepared to give you 1,000 reasons as to why.

Contact Jennelle at Eton Property to find out how you can save money, and grow your portfolio!

Jennelle Marden | 0434 552 950
jennelle@etonproperty.com.au



EXCEPTIONAL PROPERTY MANAGEMENT DOESN'T COST... IT PAYS

Safety summit “important step” in listening to the Docklands community

WORDS BY *Brendan Rees*
SAFETY & SECURITY

A much-anticipated safety summit has been staged bringing together the City of Melbourne, Victoria Police, residents’ groups, and stakeholders to address various issues facing the city.

More than 50 people attended the August 19 summit at Town Hall including the Docklands Representative Group (DRG) with safety infrastructure, safety at night, community policing, and the Connect Respect program among the issues discussed.

The Connect Respect program, which is delivered by the Council to Homeless Persons and the City of Melbourne, helps businesses build their understanding of and support their response to homelessness in the city.

“Community safety is a priority for us at the City of Melbourne,” Lord Mayor Sally Capp said, adding the summit aimed to “facilitate safer neighbourhoods for everyone and agree on actions to be taken”.

“We heard from Victoria Police and our own city safety team, as well as broader questions and feedback from our presidents of residents’ community groups,” she said.

“We’re looking forward to continuing these discussions and working together towards agreed outcomes.”

The Lord Mayor said the council would investigate increasing lighting outside commercial buildings, as well as making it easier for building owners to install external CCTV cameras.

The council would also find ways of better communicating safety programs it had in place, she said.

The DRG, which had three representatives attend, viewed the summit as an “as important step” in addressing the specific needs of different precincts within the City of Melbourne.

“Safety is important, and an ongoing challenge and we were pleased with the City of Melbourne in recognising the importance of residents,” a DRG spokesperson said, adding it was pleasing to see neighbourhood policing members also listen to concerns.

“One of the things that we raised was the importance for police and the City of Melbourne to engage directly with building management, not just residents and also we view this as an ongoing issue.”

The DRG also looked forward to future forums that would also engage trading and small business associations.

“Safety will always be on the agenda,” the spokesperson said, adding it must be “designed into” the community to improve perceptions of safety such as the precinct’s layout, landscaping, lighting, and wayfinding.

“For example, with the redevelopment of Central Pier, being able to design in elements



▲ The DRG’s Aditi Rawal with Lord Mayor Sally Capp.



▲ The DRG’s Aditi Rawal and Janette Corcoran.

like lighting and sight lines will ensure it is made to feel safe from the beginning and help set the tone.”

The summit comes as Docklands residents and traders have expressed concerns around crime as fears grew not enough was being done to keep the community safe.

Some residents were “increasingly removing themselves” from public spaces after dark, especially around the harbour where anti-social behaviour and violence were worrying issues. ●



▲ Greenline’s ‘Maritime Precinct’ across from South Wharf.

Analysts endorse \$300 million Greenline project, predict triple return on investment

WORDS BY *David Schout*
PLANNING

A \$300 million green trail along the north bank of the Yarra River will more than pay for itself according to economic analysts, in a tick of approval for Lord Mayor Sally Capp’s legacy project.

“Greenline”, a four-kilometre path from Birrarung Marr to the Bolte Bridge, will deliver more than \$3 of value for every dollar spent according to a business case prepared by consultancy group Ernst & Young.

The analysis is a strong endorsement for Cr Capp’s project, which she made a key part of her 2018 by-election and 2020 general election strategy.

The business case forecasted an increased economic activity of \$740 million over 20 years because of Greenline, which was expected to be completed in 2028.

It was expected to create more than 3400 jobs during construction and more than 6400 ongoing jobs by 2042.

The City of Melbourne would hope the strong business case will attract greater levels of investment from upper levels of government.

So far the Federal Government has committed \$20 million to the project, while the state government was yet to come to the table.

The council needed further commitment for the entire project to go ahead, however was confident of garnering the required investment.

At the time of publishing, the City of Melbourne councillors were expected to endorse the business case at their September 6 Future Melbourne Committee meeting.

Cr Capp said Greenline, which she has declared would represent Melbourne’s “biggest transformation” since the opening of Federation Square in 2002, would welcome “waves of new visitors, and inject millions of dollars into our economy”.

“The business case unequivocally shows the Greenline Project stacks up, delivering \$3 for every dollar invested, and \$740 million worth of economic and community benefits for Melbourne and Victoria,” she said.

“We need to be ambitious – and this is exactly the sort of project Melbourne needs to grow, drive investment and cement our position as Australia’s most liveable city.”

The analysis showed Greenline would attract more than 1.1 million additional visitors to the city every year, who will spend more than \$23 million annually.

Beyond its economic value, the business case predicted the four-kilometre trail would also create a \$60 million benefit from protecting and enhancing the environment, and \$250 million in “social value” due to 330,000 hours of new recreational activities and the celebration of Aboriginal culture along the trail.

Delivery of the project will take place in stages, with work on “site one” at Birrarung Marr expected to begin in mid-2023.

The council released these plans in late July, which included a new 450-metre boardwalk at the prominent spot along the river.

Inspired by New York’s High Line trail, Greenline was set to be divided into five specific “precincts” on the river’s north bank, with Birrarung Marr the easternmost position.

From there (east to west), the precincts are: The Falls (“Yarro Yarro” in earlier plans), River Park, Maritime and Salt Water Wharf.

Melburnians have been encouraged to have their say on the draft plans for Greenline, however community consultation was set to close on September 12.

“Our plans are bold and will create new opportunities for everyone to engage with the river and its profound history, while attracting more visitors to the area. Now we want to hear what the community has to say on the future of this special site,” Cr Capp said. ●

Power Melbourne consultation open

SUSTAINABILITY

The City of Melbourne is calling on feedback from the local community on potential locations for community batteries in its ambition to transition Melbourne to 100 per cent renewable energy.

The council has launched a Participate Melbourne, where locals can jump online to have their say by taking a survey or attending an information session, with consultation closing on October 31.

As already announced in partnership with the federal government in Southbank, the council’s Power Melbourne project seeks to install a network of neighbourhood batteries around the city.

The batteries will be linked to a retail electricity plan to help renters, people living in apartments, and those running small businesses



access more affordable renewable electricity. “We’d like to know what you think about neighbourhood batteries and when the time comes, how we can make it easy to switch your energy bills to a Power Melbourne plan,” the council’s Participate Melbourne site said. ●

To have your say:
participate.melbourne.vic.gov.au/power-melbourne

DENTIST

docklands DENTAL STUDIO
a different dental experience

BOOK NOW ONLINE
docklandsdentalstudio.com.au

ACCREDITED

Now Accepting zip Money

Zoom! Teeth Whitening
Now Available

invisalign
The Clear Alternative to Braces

Start from just \$12 a day

Our Dentists:

Dr Pia Oparkcharoen Dr Cindy Liang
Dr Aisling Cromie Dr Srividya Iyer

Services:

Check-ups (exam, scale and clean, X-Ray); children’s dentistry; teeth whitening; dental implants; root canal treatment; crown, bridge, veneer; dentures.

Mon-Fri 8:30-5pm (Thurs until 6pm) Sat: 9am-1pm
57 Merchant St, Docklands (opposite Victoria Harbour Medical Centre)
www.docklandsdentalstudio.com.au - ph 9021 9487 mob 0488 799 487

The world's biggest fitness brand here in Docklands

With more than 530 clubs nationwide, Anytime Fitness is a giant of the fitness industry.

WORDS BY Jack Hayes

According to American magazine and website, *Entrepreneur*, its 4000-plus clubs globally rank it the ninth largest in the world, mixing it with franchise heavyweights like KFC, 7-Eleven and McDonald's.

With such a monumental presence across the world, it would be easy to assume its two-and-a-half million global members would become just that, a number.

But as co-owner of Anytime Fitness Docklands Phil Edwards has seen first-hand, it is his team's personal approach that is embedding its roots in the local community.

"The response since opening back in 2016 has been phenomenal which has been to see," Mr Edwards said. "Since then, we have become an integral part of the thriving Docklands community."

"Anytime Fitness Docklands is targeted to both a residential and worker population by providing a convenient space where people can work out during lunch time or after hours, have a shower and go back to the office."

"With workers slowly coming back to the city, we have noticed an increasing number of local residents both from Docklands and surrounds who are looking for a premium fitness offering."

Anytime Fitness Docklands is located in the Collins Square precinct at 747 Collins St and is one of four clubs from Mr Edwards and his business partner, Julie Mazzarella, who have more than four decades of combined experience working in the health and fitness industry.

Since opening Anytime Fitness Docklands, Mr Edwards has formed partnerships with



▲ Anytime Fitness Docklands co-owner Phil Edwards. Photo: Murray Enders.

local businesses and community groups to solidify his team's commitment to the area and grow the brand.

Now, with almost six years of service to the community under their belt, Mr Edwards told

Docklands News the convenience of 24/7 access, state-of-the-art equipment, and inclusivity for all members, "no matter your body type, fitness level, ability, gender or background," is what attracts people to our club.

"There can be a fear of the unknown for first timers joining the fitness community, and with so many options out there, it's a matter of picking the right fit for the individual," Mr Edwards said.

"So, to have a personal touch, where our members are treated like a person not a number and are greeted when they come in and when they leave is incredibly important to us."

"Our members mean the world to us, their health and safety matter to us, we are here to hold their hand every step of their journey, no matter what that journey happens to be."

"We want our members to have the feel of belonging to something. Belonging to a community that is focused on achieving their goals."

Anytime Fitness Docklands boasts a huge range of state-of-the-art equipment, multiple training zones, functional training zones, individual showers, separate toilets, a beauty bar – where you can use hair dryers and straighteners – individual showers and bathrooms and gives members the ability to use their membership at any of the 4000-plus locations worldwide.

"For our members, convenience is everything. We love the fact that we can remove any barriers they may have in wishing to exercise, while having access not only to their home club but also any Anytime Fitness club in Australia or overseas," Mr Edwards said.

"Also included in every membership is access to the Anytime Fitness app where we further support our members with education on training and nutrition. Also included is rewards program where you are rewarded the more you work out."

Anytime Fitness Docklands is located at Shop 9B, Collins Square, 747 Collins St, Docklands. ●

For more information:
anytimefitness.com.au/gyms/au-1256/docklands-vic-3008

Rental providers beware!

In March 2021, the Victorian Government passed the most significant changes to rental laws in living history.

WORDS BY Jack Hayes

According to Consumers Affairs Victoria, the "changes were introduced to expand the rights and responsibilities of renters and rental providers (landlords) and will make renting in Victoria fairer and safer".

The legislation ensures rental providers meet the minimum standards required of their property, and if the property does not meet minimum standards, renters can end their rental agreement (lease) before moving in or they can request an urgent repair.

The minimum standards are divided into 14 categories and include requirements such as:

- all rooms being free of mould or damp caused by or related to the building structure;
- rental properties must have adequate ventilation in all rooms including the bathroom, shower, toilet, and laundry; and
- meeting electrical safety standards by having modern style switchboards, with circuit breakers and electrical safety switches installed.



▲ From left to right: examples of mould and hoarding in city apartments.

These are just a few requirements in a long list of standards rental providers must abide by, however, according to Re-define Real Estate owner, Philip Middlemiss, more can be done to ensure minimum standards are met.

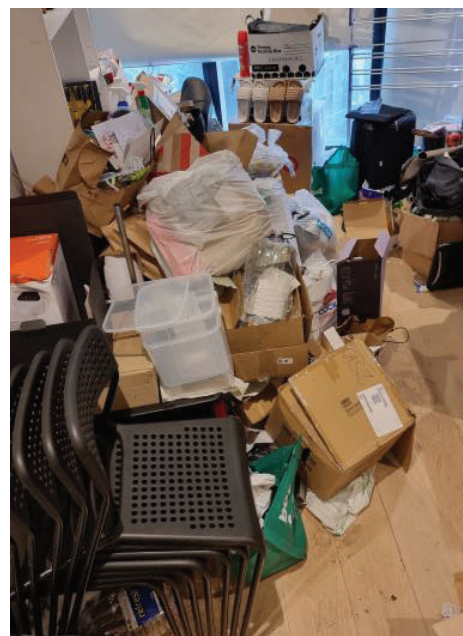
"Agents have less time now, and routine inspections are a time-consuming process when you have a portfolio of hundreds of properties," Mr Middlemiss said. "But just because this process is labour intensive, that is no excuse to cut corners with compliance."

"As a rental provider, you have to ask yourself; how do you know your agent isn't going to get you in trouble? How do you know they are doing what they are supposed to?"

"As property managers, if we send an expert to check your property and they find a fault that could put your tenants at risk, any time between knowing that information and getting the issue fixed, you are potentially liable; agencies can get large fines, but landlords can also be found liable for issues."

According to Mr Middlemiss, to mitigate risk, a rental provider should ask themselves the following question:

- When was the last time I received a routine inspection report from my agent?



- Have I recently signed a Managing Authority that clarifies the tasks my agent performs?
- Did this include the Pre-Rental Disclosure form?
- Have I been asked to complete the bi-annual safety check?

If you have not been asked to complete these tasks, your agent may not be acting in your best interests.

In apartment living environments, common issues relating to minimum standards not being met include over-crowding, poor ventilation, mould, and essential services not working.

When asked if enough is being done from governing authorities, rental providers, agents, and tenants to ensure minimum standards were



being met, Mr Middlemiss said "there is plenty more that can, and should be done".

"Can we empower rental providers to challenge their agent and say, 'have you got that rental report? Or where is that managing authority form?' That is often enough of a catalyst to meet the required compliance," he said.

"There are some things we cannot avoid, like poor design faults that cause things like mould, but there are some things you can do as a landlord to avoid it. Mould resistant paint helps, heat lamps help, these are just some things rental providers can do if they are educated by their agents."

"Another challenge has been the shortage of A-grade gas plumbers and fitters to do the work, poor education from agents to rental providers in terms of minimum standards and a larger overseas or interstate investor market, it creates the perfect storm for meeting the compliance regulations."

To learn more about the rental law changes in Victoria or to discuss the management of your property, speak to the team at Re-Define Real Estate today on 8658 5954 ●

For more information:
re-define.com.au



▲ Left to right: Eton Property's Emily Schweizer, Celeste Hall and Jennelle Marden

A familiar face in property management returns with a new team

During the past few years, Eton Property Group, one of Melbourne's leading agencies specialising in both off the plan apartments and townhouses, has carved out its mark on our city's property scene.

WORDS BY Jack Hayes

With major residential developments from North Melbourne to Malvern East, or bespoke townhouses from Fairfield to Cheltenham, the company is growing at a steady pace.

Under the tutelage of seasoned property manager Jennelle Marden, Eton Property Group has added property management to its long list of services, only strengthening its grip on Melbourne's real estate market.

Since founding the company's property management arm more than four years ago, Ms Marden has grown her rent roll from zero properties in 2018 to a current total of north of 400 properties.

With more than 60 years of combined experience, Ms Marden's team of property managers is what she described as "the best team I think I have ever worked with".

"We have a huge breadth of experience. We are only as small agency, we never want to be a big agency," Ms Marden said.

"Sticking to that boutique feel is really important for us. That means handing out our mobile numbers, speaking to clients over the phone, being accessible to our clients. We pride ourselves on communication and efficiencies."

"We like to pride ourselves on being the apartment specialists. We make sure we pay all outgoing for our landlords; we want to make their life as stress-free as possible, so all they need to do is collect the rent each month."

Eton Property handles the leasing and management of properties from all over Melbourne, including Point Cook, Bundoora, Camberwell, Brighton, Southbank, and here in Docklands.

While 25 years of experience working with some of the city's biggest agencies moulded her into the agent she is

today, Ms Marden wants to keep her team small and her rent roll growing at a manageable rate, which will see its boutique and personal service continue for years to come.

"I've worked with larger agencies, and you can become a bit of a number, they don't know you and they don't know your property," she said. "Whereas at Eton Property, I know all my landlords across our 400 properties, because as the leader of our team, I put them on."

"We spend a lot on programs and technology that help immensely in giving a better service to owners. Whether that be a portal where they can get access to all their documents like routine inspections or conditions reports, or whether it is basic maintenance, we need to cover off."

"Property management can be easy when it's done correctly and by a professional. By having the experience, it pays. The experience of my team pays to invest in; you can always get cheap property management, but will that be in the best interest of landlords? The answer will almost always be no."

According to Ms Marden, she expected the rental market to dry up, with the hope government would step in to entice investors.

"We have always maintained a under two per cent vacancy rate on our rent roll, even throughout lockdowns we managed to keep that number around the two per cent mark," Ms Marden said.

"Using our professional skills and the latest technology, we find quality tenants, minimise vacancies and handle marketing, repairs, maintenance, accounting and legal compliance efficiently and cost-effectively." ●

For more information:
etonproperty.com.au/property-management



Jack Hayes
 BUSINESS EDITOR
JACK@HYPERLOCALNEWS.COM.AU

STATE MP



▲ Ellen Sandell MP standing at the busy intersection that is a major crossing for Docklands Primary School students and parents getting to and from the school.

More needs to be done to keep Docklands Primary students safe

I've been working hard alongside parents and the local community for over a year now to raise awareness about road safety issues around Docklands Primary School.

We've made some progress. Thanks to our advocacy, the Victorian Government committed \$900,000 towards improving road safety around the school.

Some minor upgrades have been made, such as installing electronic 40km/hr speed signs around the school and a fence to separate the footpath from Footscray Rd.

However, these roads are still really unsafe and dangerous. There have been too many close calls, with students and their families dodging cars and crossing unsafe intersections.

A lot more needs to be done. As a mum of three young kids, I know just how important pedestrian and school safety is. It breaks my heart to hear from local Docklands parents who still have concerns about the safety of their kids (and themselves) getting to school.

I'm again joining with the school and parents to call on the state government to urgently address safety concerns and develop a comprehensive traffic management plan for the area. We need bigger structural changes to the Footscray Rd and Docklands Drive intersection, to ensure safer crossings for pedestrians and cyclists; better traffic manage-

ment for cars; and a separation of cyclists and pedestrians on the shared footpath outside the school.

More funding is required to fix these problems, to protect school children and pedestrians from accidents with cyclists and cars. This is especially important as cycling becomes increasingly popular as people choose to avoid traffic and reduce their carbon emissions. You can help us push the government to fix unsafe roads near Docklands Primary School by signing and sharing this petition:



If there are other local issues impacting the Docklands community, I'd love to hear about them. As your local MP, it's my job and my pleasure to advocate in Parliament for the things that matter to you. So, if there's anything I can help with, please get in touch at office@ellensandell.com. ●



Ellen Sandell
 STATE MP FOR MELBOURNE
OFFICE@ELLENSANDELL.COM

ELLEN SANDELL

GREENS STATE MP FOR MELBOURNE

Hi, I'm Ellen, your local state MP.
I'm here to help. Don't hesitate to get in touch.

(03) 9328 4637
office@ellensandell.com

146 Peel Street
North Melbourne VIC 3051

Authorised by E. Sandell, 146 Peel St, North Melbourne.

Cash to ditch short stays!



A city in Arizona, USA is implementing an innovative plan to enhance housing availability for locals.



The city's "Rent Local" program aims to lure Airbnb hosts in Sedona away from the holiday platform with significant cash incentives.

A host can receive up to US\$10,000 (about AUD\$14,500) to remove their short-term listings from Airbnb and revert to long-term rental.

In an exquisitely ironic twist, the bold move targeting hosts on short-stay platforms has the firm imprimatur of the local tourism industry.

Local tourism operators have been pressuring the council to fix a housing shortage that has driven their workforce out of town. The economic reasoning is that no housing means no workers means no tourism industry. The controversy and its coverage with the local media has inspired the council's courageous move this month.

The council insists the move will improve housing options for locals in a climate of rent increases and general uncertainty in the real estate market.

The city council will grant US\$3000, US\$6000 or US\$10,000 to Airbnb hosts depending on whether the listing is a room, studio apartment or whole property. Properties qualify if they are rented for a minimum term of 12 months to someone employed in the city – a clear indicator of the council's socioeconomic objectives.

State election – is anybody listening?

Meanwhile, here in Victoria, we are struggling to get even the most basic of regulations, such as registration of short stays. We have been pressing the government to introduce a cap on the number of short-stay nights per year for each listing, a regulation already adopted in New South Wales and in so many jurisdictions around the world.



We have also invited opposition parties to make policy announcements along these lines. So far, only the Greens have done so.

With the election looming, there is an unmissable opportunity for all candidates to stand up and support a policy that delivers these long-overdue and globally proven reforms to short-stay regulations.

Does cladding mean "covering up"?

We Live Here has received a plea from a reader trying to help a family member buy a cladding-free apartment ...

"I keep hitting a brick wall with most apartments having a history of flammable cladding or an outstanding unresolved issue with cladding – these are noted in the body corporate minutes either in the contract of sale or in the Section 32. Also, I read with interest your recent article about a similar problem with the curtain walls within

buildings which I greatly appreciated."

"To save time and money, I was hoping that there was a register of buildings with cladding or curtain wall problems. However, contacting Cladding Safety Victoria and the Victorian Building Authority, they quickly went to ground and didn't want to talk about anything."

"Do you know someone of authority who could help me in steering clear of a list of buildings that may suffer from flammable cladding and or flammable curtain walls which would greatly help futureproof this first-home purchase?"

We Live Here has discussed this issue with Cladding Safety Victoria (CSV) whose website in early 2021 did indeed have a list of Aluminium Composite Panel (ACP) cladding-afflicted buildings in Melbourne.

Now, even the official "Cladding Safety Victoria Annual Work Program 2021-22" does not disclose the affected building names or details.

The information publicly available from CSV last year included names and addresses of buildings, the number of apartments, along with photographs of the highest-risk parts of the buildings and fire engineer risk rating summaries. We Live Here has seen a copy of the list, although now it would be out of date of course because a proportion of these buildings may have commenced or completed remediation works.

This diktat leaves apartment buyers like our correspondent in the dark – with the onerous task of scouring the Section 32 pages for each apartment contemplated.

CSV has previously informed We Live Here that its determination that the list should be confidential was based on security concerns.

This is quite frustrating for apartment buyers. The public deserves a solution that balances public security and the right to know the risks associated with what is the largest investment for most.

Yet more disadvantaged, tenants in these properties are not even afforded the opportunity to peruse a property's section 32.

We Live Here has tried to obtain information from CSV about the pool of money available for remediation since the initial pool of \$600 million was announced in 2019.

We participated in discussions with CSV prior to and during the early stages of the remediation program. Since October last year, updates to us from CSV have stopped. We can

only wonder what information is not being disclosed – is it too unpalatable to share?

There has been insufficient transparency about the programme from the outset – the public needs more information than has been offered.

How many buildings have been fully funded, partially funded or denied funding? How many buildings cannot obtain insurance? Is there any information about cases of buildings denied funding where the remediation runs to the tens of millions?

With an election not far away, it would be helpful if CSV could release the basic information that apartment owners and residents have a right to know – now. If we have to wait for the CSV annual report – possibly late October – there would be little time for review before the electorate votes.

Update on the reformed committee

Readers will recall that we have been following the saga of an inner-city apartment building that was saddled with a developer-controlled committee.

We have been reporting the tribulations and triumphs of one stalwart lot owner who initiated a revolt and galvanised the residents to create a fairer committee. The committee election campaign delivered some success and now we are keen to hear of reforms that restore equality and fairness.

Of note is that the case has drawn interest and support in senior civic circles. This networking accomplishment will certainly help throw a spotlight on planning decisions that have been swayed too easily by powerful developer interests.

Campaign donations

As a not-for-profit organisation, donations from individuals and buildings keep our campaigns going. To register as a supporter of We Live Here or to donate, please visit welfare.net. We Live Here does not accept donations from commercial tourism interests. ●



Barbara Francis & Rus Littleton

CAMPAIGN@WELIVEHERE.NET
LEARN MORE AT
WELIVEHERE.NET



OWNERS' CORPORATION LAW

Sydney's Mascot Tower and Opal Towers should serve as a warning to Melbourne's building industry

A downturn in consumer confidence about building standards is the last thing that developers and builders of residential apartment buildings need right now.

However, the saga that is playing out in Sydney's Opal Tower and Mascot Towers is serving as a warning shot to all owners and prospective buyers of apartments about the perfect storm that has been brewing in the construction industry for some time.

The bad news is that the deregulated building compliance laws and standards that led to these issues in NSW's Opal Tower are almost identical to Victoria's laws and standards in much the same respect, meaning that Melbourne may have an Opal Tower somewhere among it soon enough.

Structural cracks opened up on level 10 of the 392-unit tower in the Sydney suburb of Homebush on Christmas Eve 2019, leading to the enforced evacuation which left residents

without a home during the holiday period, and is causing more frustrations as some owners endured months of living in alternative accommodation before they found out if the tower was safe to return to.

An interim engineering assessment report highlighted that the some of the cracks in the pre-cast concrete panels may have deviated from the original design.

While Opal Tower has garnered significant media attention because of the extensive damage that has occurred in an almost brand-new building, the sad reality is that this is just the tip of the iceberg of a much larger issue brought about by the continued deregulation of the construction industry in both NSW and Victoria.

The current fashion of the construction industry is for developers to enter into contracts with builders known as "design and construct" contracts (or "D&Cs") for all or part of a building to be designed and built by the builder.

These contracts provide builders with free rein over both the design of the building and the types of materials used. The contracts usually also impose financial penalties on the builders if the project is delayed.

In addition, the introduction of private build-

ing certifiers and the removal of independent council inspections of buildings has meant that builders no longer have to answer to a strong independent inspector to enforce building standards and compliance. Some private certifiers will have a conflict of interest as they rely on being paid and selected by the developers and builders to certify their buildings.

On top of this a similar model of contractual relations between builders and sub-contractors (where contractors are given a limited amount of time to complete large scale works) has created an environment where precision and safety have been replaced by cutting costs and lowering standards in order to meet deadlines and budgets. Thus, the perfect storm has arrived.

It remains to be seen what overhaul of policy and regulation emerges out of the Opal Tower issue, but without a commitment from government to remove the conflicts of interests between private certifiers and builders, the quality of buildings may continue to plumb new depths.

The Victorian Government ought to take strong and decisive action here, as it has a big financial stake in keeping economic conditions ripe for both developers to continue building

apartment buildings, and for citizens to continue to purchase apartments in those buildings. Needless to say, a strong construction industry creates jobs, keeps the unions happy, increases consumption of steel and building materials, and swells the public coffers with stamp duty payments. Therefore, Premier Daniel Andrews needs to jump on the front foot.

Current owners of high-rise apartments should seek guidance from their owners' corporation committees to commission reports detailing whether there are building defects, and whether there is still time to bring a claim against the builder and developer.

Alternatively, if you're considering buying an apartment, then be sure that you have conducted your due diligence on the records of the owners' corporation prior to making an unconditional offer.

Better to be safe than sorry. ●



Tom Bacon

TOM BACON IS THE PRINCIPAL LAWYER OF STRATA TITLE LAWYERS.

TOM@STRATATITLELAWYERS.COM.AU

HEALTH

Every spine counts this World Spine Day!

On October 16, we at Docklands Health will celebrate World Spine Day 2022 to raise awareness about spinal disorders.



The overarching mission? To help empower YOU to take charge of your spinal health.

Did you know that at any given moment, an estimated 540 million people suffer from lower back pain globally? Or that four million Australians suffer from back problems every year?

It's a big statistic and one of epidemic proportions.

This year's theme "every spine counts" pays close attention to the global burden of spinal disorders and the diverse set of challenges they present across the globe in all regions, cultures, and backgrounds. "Every spine counts" also addresses the need for increased worldwide access to quality spinal health services, especially in impoverished communities.

Sadly, for many people, spinal disability is more than just an inconvenience; but a terrible circumstance where individuals are no longer able to work and supply food and shelter for their children and families.

To acknowledge this and encourage healthy spinal habits, we are encouraging patients to maintain a healthy spine by staying mobile, avoiding physical inactivity, not overloading their spines and adopting healthy habits.

To help Docklanders reset and refocus on

their spinal health, Docklands Health is encouraging people to "straighten up", "start walking" and "find a chiro" this World Spine Day.

It is estimated that on average we spend five hours a day sitting; with a quarter of the population sitting for more than eight hours a day!

Stretching and performing regular spinal exercises are easy and time-efficient ways to help improve your spinal health – which you can now do at the touch of a button with a newly launched Straighten Up app! Featuring a set of simple exercises (and taking just three minutes to complete), the Straighten Up app will help you maintain correct posture no matter where you are! Download the Straighten Up app today.

With so many of us working and learning remotely, it is now more important than ever, to get outside and stretch those legs. The



To acknowledge this and encourage healthy spinal habits, we are encouraging patients to maintain a healthy spine by staying mobile, avoiding physical inactivity, not overloading their spines and adopting healthy habits.



Department of Health recommends a minimum of 150 minutes of moderate to vigorous activity each week. Walking not only increases heart and lung fitness but contributes to a naturally upright posture. Download the fun and easy-to-use, Just Start Walking app to track and map your walks with friends and family! ●



Dr Mike Edgley
CHIROPRACTOR
DOCKLANDSHEALTH.COM.AU

OWNERS' CORPORATION MANAGEMENT

The benefit principle explained

The benefit principle is simple in premise; when levying for "extraordinary items of expenditure" that do not benefit all owners equally, the owner that benefits more, should pay more.



In application, things aren't quite so simple.

What is the "benefit principle"?

The benefit principle first appears in Section 24, subsection 2(A) of the *Owners' Corporations Act 2006*, which states:

"Fees and charges for extraordinary items of expenditure relating to repairs, maintenance or other works that are carried out wholly or substantially for the benefit of some or one, but not all, of the lots affected by the owners' corporation must be levied on the basis that the lot owner of the lot that benefits more pays more."

Similar wording also appears in Section 49: "Cost of repairs, maintenance or other works", and Section 53: "Upgrading of common property", so it is a well-established principle within owners' corporation regulations.

Where things get tricky is that the Act does not set out criteria for determining which lots benefit, how to quantify that benefit, nor how to apportion the cost accordingly.

The Grundl Assessment

In 2017 case *Owners' Corporation PS407621Y v Grundl*, VCAT Senior Member A. Vassie gave a detailed assessment, when dismissing a fee recovery proceeding, which provides a useful set

of steps to follow when determining whether to apply the benefit principle.

In short, the Grundl Assessment outlines that if an owners' corporation (OC) considers the question of who substantially benefits from the works, and, acting in good faith and exercising due care and diligence, finds that all lots substantially benefit, then a tribunal will not interfere with its decision to set fees in accordance with lot liability.

If, however, an OC fails to consider the question, sets fees in accordance with lot liability and an aggrieved lot owner challenges the decision, the OC has made a legal error. If all lots do not equally benefit from the works, the OC runs the risk of the resolution being ruled invalid.

In this case, an owner, Mr Grundl, was found to not be liable for paying a levy of \$26,400 because the benefit principle should have been applied and was not. Mr Grundl did stand to benefit from the works in question, but substantially less than other owners.

Making the right decision

When trying to determine if some lots benefit more than others from proposed works, there are a range of factors to consider.

For example, the layout of the property and location of the works, the improvement which results from the works, and if that improvement enhances the value of the whole property. Whether the works improve the safety of the building or reduce the risk of personal injury should also be considered.

One lot may benefit more directly from the works, but all other lots may indirectly benefit, either from improved value, or reducing the risk of legal action against the OC. These considerations must all be weighed up.

If it is decided to use the benefit principle, the responsibility falls to the OC to decide the extent to which the various lots benefit and apportion fees accordingly.

An OC can rest easy in its decision, though, so long as it acts in good faith and with due care and diligence. Where this is demonstrated, a tribunal will not interfere with its decision, unless "the decision was outside the range of reasonableness so that it was one which no members of an OC, acting honestly and reasonably, could have made, or unless there has been some other legal error."

Ultimately, the key factor is to consider the question of who substantially benefits from the works. An OC may wish to get legal advice to illustrate their consideration, and protect their decision from being overturned, should it be challenged by an owner at VCAT.

Looking for an experienced & knowledgeable Owners Corporation Manager? ●



For more information:
theknight.com

CHAMBER UPDATE



We're in very strange times

The world has changed and nowhere is it clearer than in Docklands. It can't be highlighted any more than the disparity between our hotels and our hospitality industry.

As I sit here writing this there's barely a single room left in all of Docklands for the next week. Yes, there's a confluence of the Grand Final and an unheard-of four-day long weekend, but our accommodation providers are finding themselves consistently at capacity.

Contrast that with our hospitality providers. Even our most successful and stable are taking days off each week to minimise costs.

People are loving to stay in Docklands, we have some of the best hotels in all of Melbourne, it's an easy traverse into the city and, of course, it's beautiful here. So why aren't they spending in Docklands? I don't have the answer.

I recently attended the Docklands Summit and there were some interesting ideas promoted. Clearly the highlight of everyone's thoughts were that Central Pier and Harbour Esplanade are the key to Docklands.

On the note of the Docklands Summit – I personally had some queries about the representation there. Everyone is welcome to their opinions, and I saw a lot of well-known voices in attendance but what I didn't see was the average Docklander.

Statistics from last year's Census show that the average resident in Docklands is 32 years old of Indian or Chinese descent, a dual income household, paying rent. I can't recall seeing one person who would be representative of that population and that reflects more than 70 per cent of Docklands residents.

I trust their thoughts were captured in the forum process. They are representative of the people moving to Docklands and calling it home and deserve a voice.

October looks like a huge month in Docklands. Following on from a packed school holidays with all accommodation providers at capacity we then have a cracking finish to the month. Reflecting back on the heydays of Docklands, the Melbourne Boat Show is calling NewQuay Promenade home from October 20 to 23. That merges with O'Brien Icehouse hosting the Australian Ice Hockey championships from October 18 to 23. Then the following Saturday we have our Indian friends celebrating Diwali on Ron Barassi Senior Park – all are welcome.

Feel free to shoot any ideas, complaints, comments or feedback to us at admin@dockland-scc.com.au and follow our socials – Insta @ [docklandsmelb](https://www.instagram.com/docklandsmelb) and Facebook @ [melbdock](https://www.facebook.com/melbdock) ●



Shane Wylie
MEDIA DIRECTOR
DOCKLANDSCC.COM.AU
DOCKLANDS Chamber of Commerce

YOUR NEXT OFFICE IN DOCKLANDS
Get in touch to find the best-suited one today.

Contact us at 1800 883 753
ausales@compassoffices.com

SCAN TO GET 2 MONTHS FREE

Vertical Neighbourhood Watch

Neighbourhood Watch is about neighbours looking out for neighbours, but can this work in our vertical villages?



There's long been debate over what to call our inner-city locales of the CBD, Docklands and Southbank. Are we districts, precincts or can we claim the title of "neighbourhoods"?

Of late, there has been a definite trend towards the "neighbourhood" label, as evidenced by City of Melbourne, which recently launched a new place-based program called "the neighbourhood model". This aims to help the council connect with the municipality's various communities and one of the first to come on board was the "CBD Neighbourhood Portal". The Docklands and Southbank neighbourhood portals are promised to be close behind.

Also bestowing the "neighbourhood" title upon us is Victoria Police. Under their Neighbourhood Policing program, they too are seeking to focus on grassroots engagement, with all inner-city locales having scored their own friendly neighbourhood officer!

But perhaps most tellingly is the current focus upon our vertical villages by Neighbourhood Watch. Those of us living in Australia in the '80s, '90s and early 2000s may well remember the Neighbourhood Watch signposts which displayed a four-heads in silhouette logo, with the tag line "working together to prevent crime".

These signposts were a physical notification to people that they were in a Neighbourhood Watch Zone.

Originally launching in 1983 in Frankston, Neighbourhood Watch became a significant program with approximately 36 full-time staff and 30,000 volunteers. But in 2009, Victoria Police closed the program.

In the intervening years, Neighbourhood Watch has re-established itself as an incorporated association. Now led by Bambi Gordon and supported by a team of five employees and more than 4000 volunteers, Neighbourhood Watch has again become a community-based crime prevention program. It has the primary aim of improving the quality of life within a neighbourhood by minimising preventable crime and promoting closer

community ties. At its heart, the program relies on working partnerships between the community and the police.

Bambi was drawn to reinvigorating Neighbourhood Watch because she recognised the potential of the Neighbourhood Watch brand, most especially its strength as a trusted voice, with a still relevant message – "it just needed to be made more suited to current times," she said.

And move with the times they did, with their first pilot program trialling the use of synthetic liquid DNA for property marking – a method that is used in around 40 countries.

Their second pilot is similarly ground-breaking as it focuses upon a demographic which was not part of the original Neighbourhood Watch, namely those dwelling in high-rise apartments. This high-rise pilot is called "Connect Up" and is being undertaken with Safety Alliance Victoria (which comprises Victoria Police, RACV, Federation University and Crime Stoppers).

Connect Up tests different approaches to engaging residents of high-rise apartments and has the aim of removing barriers between residents and police, improving residents' sense of safety and decreasing crime.

"We want to educate residents as to the simple things they can do to prevent crime – in particular to know their neighbours – and encourage planners, councils, developers, to 'build' community engagement into future high rises," Bambi said.

While still in its early stages, Bambi reports

that the themes of mail theft, cage security and ID theft are critical issues for our vertical villages. However, and perhaps more insightfully, there have been learnings about how to engage our vertical communities, including one important lesson about translating messages. Initial findings suggest that simply transforming the same text into different languages is often not sufficient to convey messages. Additional support is required, which could take the form of video or even augmented reality.

As to the future of Vertical Neighbourhood Watch, already many discussions are underway as to how the original suburban model of Neighbourhood Watch (which placed great weight upon lines-of-sight) could manifest in vertical villages where our neighbours' sight-lines are often cropped to shared areas of common property. ●

For more information:
nhw.com.au



Dr Janette Corcoran
APARTMENT LIVING EXPERT
LEARN MORE ON FACEBOOK.COM/
SKYPADLIVING/

ABORIGINAL MELBOURNE

Layers of Blak exhibition returns for a second year

Eleven Victorian First Nations Aboriginal and Torres Strait Islander artists and designers have been chosen for their unique talents and ideas to present their stories through exquisite contemporary jewellery.

WORDS BY *Kaylah-Joelle Baker*



▲ STOP KILLING COUNTRY by *Nikki Browne* (Bidjara). Photo: *Fred Kroh*.

Taking layered jewellery to a new meaning, the completed works, which will be displayed at the Koorie Heritage Trust from October 1 until February 19, will unveil stories of healing, resilience, collaboration and empowerment.

Selected as a First Nations artist to participate in being taught new skills in jewellery making and refining what jewellery means through the use of found objects and natural

materials, is Nikki Browne.

As a Wurundjeri country-based Bidjara artist who works mainly in sculptures, Ms Browne is inspired by her love of Country, environment, wildlife and culture.

"My sculpture pieces are always predominantly related to Country and everything has to have a message and a story, so normally my stories are about protecting the environment,

our waterways, and our Country," she said.

"[Jewellery making] is just another medium to express that."

Ms Browne's jewellery has come together through the use of gifted sea urchin shells, sewing machine cogs she found and gum leaves that fell upon her one day and spoke into a memory from her childhood.

"Growing up, my mum's best friend had this great big blue gum tree with these amazing big gum leaves, and I used to paint them and gift them to my family for Christmas," she said.

"The sea urchin shells and the gum leaves talk to protecting Country, and they link together with the sewing machine cogs which speak to the industry [sector] needing to make smarter, more eco-friendly choices."

"It represents care for Country, our old-growth forests being logged and pollution."

As a program that allowed Ms Browne to encourage everyone to "all do a small part to help the environment", she said it was one of the best things she had ever done.

"I am so chuffed to have been a part of it and come out with such an amazing experience," she said. "I cannot thank Koorie Heritage Trust,

the artists, designers, jewellers and everyone involved enough for their time and support."

"We have come from all different places and have come out with new friendships, a community and an absolutely amazing experience, and people will be quite moved by the collection of work."

Following the exhibition, the participating artists will find continual support as the program strives to foster First Nations cultural innovation within the Victorian design sector.

The *Layers of Blak* exhibition is an outcome from the Blak Design program, a program developed in partnership with the National Gallery of Victoria and RMIT University with the support of the Ian Potter Foundation.

Among the selected participants with work displayed are Thelma Austin (Gunditjmarra), Mandi Barton (Yorta Yorta/Barapa Barapa/Wemba Wemba), Lorraine Brigdale (Yorta Yorta), Deanne Gilson (Wadawurrung), Tammy Gilson (Wadawurrung), Elijah Money (Wiradjuri), Yasmin Silveira (Palawa), Sammy Trist (Taungurung), Dominic White (Palawa) and Tracy Wise (Barkindji Ngiyampaa Maligundij). ●

Join us over the next 2 months, as our team of experienced agents takes you over what has been driving the Melbourne property market.

September's Tips:

1. The Value of Your Property Manager
2. Traditional Rental vs Short Stay
3. Depreciation and Wear and Tear



Scan the QR code to join the conversation

“After 20 years of selling and leasing apartments in Melbourne's CBD and surrounds, it's time to give back”



PHILIP MIDDLEMISS
OWNER
RE-DEFINE REAL ESTATE
0402 840 674

re-define
REAL ESTATE

MISSION TO SEAFARERS

Mission Art Prize on again

The Mission to Seafarers Victoria (MtSV) is hosting the 20th Maritime Art Prize & Exhibition until Sunday, October 16.

Artists responded to the theme “The Relationship of Humanity to the Sea” for their share of \$25,000 in prize money, including the coveted 2022 MSC Mediterranean Shipping Company Maritime Art Award of \$15,000.

MtSV provides welfare services to support the tireless work and hardships faced by seafarers, and the annual event is a major fundraising initiative.

Ninety per cent of everything we use; from the coffee we drink and the cars we drive, to the clothes we wear and our mobile phones, reaches us via the sea.

By bringing goods to our shores, seafarers



and the shipping industry support the economy of our island nation, so we may stay healthy and thrive.

The generosity of sponsors who provide the prize money and other in-kind contributions, and the artists who pay an entrance fee and a commission on all works that are sold, ensures the continued success and wide popularity of the Maritime Art Prize & Exhibition and, in turn, supports the fundraising efforts of MtSV.

Held online for the past two years due to the pandemic, the welcome return to an in-person exhibition this year has been highly anticipated.

The exhibition will run daily from September 30 to October 16, 12pm to 8pm. Entry is free. ●

For more information:
gallery.missiontoseafarers.com.au

PRECINCT PERSPECTIVE (NEWQUAY)

An interesting time for the NewQuay precinct

I've personally seen a small increase in foot traffic but it's a different feel. We appear to have a lot more intrastate visitors and to be honest – a lot more quiet and respectable visitors than what was occurring directly after COVID.

WORDS BY *Monique Wylie*
NEWQUAY RESIDENT

I know there's been a lot of gossip about safety and crime in Docklands but I've only seen one incident in the entire last year. As a single woman I happily walk my dogs at 3am every single day of the year.

I know there is also a lot of talk about noise pollution. I moved to Docklands 20 years ago knowing that I was coming to a precinct full of restaurants, bars, events and activities.

Absolutely, some of the restaurants and bars host noisy events, but I moved here knowing that and would prefer a thriving precinct than for it to be dead and silent.

If you haven't seen on socials and newsletters, the Melbourne Boat Show is coming to Docklands this month and will take over NewQuay Promenade. I think it's fantastic, and I

remember the Boat Show from many years ago bringing in thousands of people. It will be a marvellous way to celebrate the harbour and I hope it's a tremendous success.

Have you seen the Blue Fairy Wren Instagram app? The City of Melbourne through their reactivation grants have funded a beautiful little Instagram app. Take a look just on the harbour side of Monument Park. There are some foil stickers on the ground and it's so easy to use.

Focus on them with your camera and it will open up a filter to use with your Instagram account adding in a Blue Fairy Wren to your photo. The Wren is a local to Docklands and one of the most gorgeous birds you could ever see.

Another initiative I have loved recently is the addition of the QR codes to report graffiti around Docklands. I personally reported two instances and once recorded was kept in the

I know there is also a lot of talk about noise pollution. I moved to Docklands 20 years ago knowing that I was coming to a precinct full of restaurants, bars, events and activities.



loop of their completion which was within two days.

Finally, I'd love to give a shout out to the O'Marche IGA on Rakaia Way. Cost of living pressures are affecting everyone right now and I've now

taken to doing a much heavier shop at my local IGA. In some cases, their prices are 40 per cent less than our big competitors.

It's a beautiful family business and we locals appreciate your efforts! ●

INCREASE BUILDING COMMUNICATION

CommVision provides a sustainable and seamless way for Managers, Council, Police and the local community to communicate with Residents.

By installing media screens in lifts and lobbies, our platform will upgrade your building and keep your Residents fully informed of:

- Important building notices;
- Community events;
- Latest news;
- Local deals.

Our touchscreens provide a fully interactive experience and are complimented with a bespoke Residential Managers portal that delivers pre-made templates for the Manager to design and schedule notices in advance. Our operating system is cloud based, enabling Management to remotely update notices seamlessly at any time of the day.

Empower your Manager today and contact our team on info@commvision.com.au 03 9863 7552 to find out how you can upgrade your building.

Warm Regards,
Your friendly neighbourhood Communication Platform Provider

CommVision.com.au

A haven for wandering souls

Sailors are the life blood of any port colony.

Melbourne's establishment as Victoria's primary shipping port led to a massive expansion of its naval traffic throughout the 1800s. One commonly overlooked aspect of shipping is the mass of nomadic sailors needed on the ships that busily traverse the globe delivering goods from one shore to another.

Sailors, upon the completion of a contract, would often end up in a city they knew nothing about and would linger there for an indeterminate amount of time awaiting their next assignment. Sailors could go months without earning a wage so, as a result, many faced housing insecurity and often ended up destitute. To cater for their inconsistent income, hotels and boarding houses would rent out their rooms to sailors on the assumption that their next employment contract would pay forward their wages to the hotel to pay off their debts.

While this practice undoubtedly worked wonders for many sailors, with most boarding houses earnestly participating, it was also a system rife with exploitation, the worst manifestation of which was an activity known as "crimping". Crimps would wait around ports and venues where sailors would congregate to offer free liquor and tobacco along with the promise of higher wages.

Once crimps had gained a sailor's trust, they would often drug them or encourage them to drink to excessive amounts. Once a sailor had fallen into a drunken stupor, he would be herded onto the ship of whichever captain had hired the crimps and be sent off to sea. The unfortunate sailor would wake to find himself in the middle of the ocean, expected to work for little to no money, and faced with beatings and imprisonment in the ship's hulk if he refused.



This vile practice was frequently undertaken by unscrupulous hotel and boarding house owners, who saw an opportunity to increase their room turnover and pocket a bit extra from the captains hiring them to kidnap people.

As Melbourne's port expanded so too did the reports of crimping which was "not uncommon" by the early 1860s. According to an article about the Melbourne Sailors Home by historian Mark Howard, growing community concerns about the practice of crimping – as well as frequent complaints of drunken sailors roving around the city late at night – led Charles Ferguson, Melbourne's Chief Harbour Master, to write a letter imploring the Melbourne Chamber of Commerce to establish a sailors' home.

Sailors' homes were essentially dormitories for sailors, the key difference was they did not require rent upfront, it was expected that once sailors got a contract part of their wages would go towards repaying the costs of housing them. The Sailors' Home would also provide a bed and meal to destitute and retired sailors, who were

unable to work due to the physical demands of the job.

Another key feature was the provision of financial services for their tenants, sailors could deposit their incomes and seek financial advice reducing the likelihood of destitution. The final benefit of the Sailors' Home was its attached shipping office, a central point where sailors and captains could register their desire for employment/employees in a regulated space that would, ideally, reduce incidents of crimping.

Charles Ferguson saw the construction of a sailor's home as the solution to "a vast amount of evil, [as] it is well known that the crimping system is in full bloom here [Melbourne]." Ferguson's proposal received support from various wealthy Melburnians as well as the Victorian Government that provided Crown lands upon which the home was to be built. Alfred Smith who designed major public buildings such as the Bank of Victoria, the Supreme Court of Victoria, and the Esplanade Hotel, was commissioned as the architect for the home.

“

Charles Ferguson saw the construction of a sailor's home as the solution to "a vast amount of evil, [as] it is well known that the crimping system is in full bloom here [Melbourne]."

”

The building was designed in the Renaissance Revival style of architecture, affording sailors a degree of respectability uncommon at the time. Construction started somewhere between 1863 and 1864 on the corner of Spencer St and Little Collins St. By 1865 the sailors' home was open for business, becoming a hub for weary sailors to establish themselves while they awaited their next contract.

The home stayed in operation for almost 100 years, eventually closing in 1963. It provided an important place of respite for sailors and reminds us of the community engagement that is required to overcome the challenges posed by intermittent employment and housing insecurity. ●



Luis Calleja
RESEARCHER
ROYAL HISTORICAL SOCIETY OF VICTORIA
HISTORYVICTORIA.ORG.AU

DOCKLANDS NEWS

Wish your inbox was more local?

Well we have good news for you!

Scan the QR so you can stay Hyperlocal on the eNews!



THE MOST EXCLUSIVE ESCORT AGENCY

Paramour
OF COLLINS STREET

CITY CENTRE
Melbourne's exclusive entertainment service.
Highly recommended for our interstate and overseas visitors

- Dinner Companions
- Social Escorts
- Sensual Ladies

VIP

Paramour's GRAND RE-OPENING
Be with the best girls in Melbourne give us a call to pre-organise for opening day due to overwhelming demand

CITY CENTRE GIRLS

9654 6011
CBD - 5 MINUTES TO YOUR DOOR
たくさんの美しい女性 日本語を話します

We have survived COVID-19 AND ARE STILL HERE TO HAVE BEAUTIFUL LADIES PRIVATELY TO YOUR DOOR 24/7

Flying the flag for maritime at the Docklands Summit



Great to see Docklands residents and businesses represented in numbers at the recent City of Melbourne Docklands Summit at Marvel Stadium – and particularly heartening to hear such widespread alignment between resident views about the future of their precinct with those views advocated by the Melbourne Maritime Heritage Network (MMHN).



You may wish to check the eight opportunities MMHN has identified in order to capture and celebrate the future of Docklands. See: mmhn.org.au/maritime.

We were dismayed to hear nonsensical references in creating the Docklands Precinct identity. The Docklands community isn't looking for an identity – it has one already – and a strong one – AND IT IS ALL ABOUT THE WATER!

Marvel to the MCG?

It is regrettable that the AFL is yet to grasp this reality, despite operating a large, dominant corporate asset in the heart of Docklands with a vast aquatic amphitheatre – Victoria Harbour

– on its doorstep!

Although MMHN is delighted that Melbourne's waterways were to be part of a AFL celebration, we was dismayed that the AFL had, in effect, turned its back on the Docklands Precinct – again. The AFL had the great opportunity to create a "Stadium to Stadium" waterways route "Marvel to the MCG" journey from the ferry terminal at Docklands to Birrarung Marr. Starting the journey in Docklands is likely to have attracted many thousands of people to the start of the parade at Harbour Esplanade.

This seems to be such a lost opportunity for the AFL to demonstrate corporate citizenship and genuinely boost Docklands. MMHN contacted the AFL to raise this matter and request that the AFL re-think the route. We were told the plans were well advanced. It's hard to accept this as a reason not to adjust the program. Same vessels same waterways?

Returning now to City of Melbourne Docklands Forum – corporate panellists based in Docklands spoke of engagement with, and support for, the Docklands community. Let's get beyond the corporate rhetoric. If the AFL won't support Docklands this year, then it should become a permanent "fixture" in the footy calendar of the future.

HMAS Castlemaine – an early alert for Docklands residents

Take a ferry over to Williamstown on October 10 for a wonderful celebration with the Navy commemorating the 80th anniversary of the commissioning of the HMAS *Castlemaine* at Commonwealth Reserve, Williamstown, on Sunday, October 9.

The heritage-listed HMAS *Castlemaine* is a ship museum owned, preserved and operated by the Maritime Trust of Australia, a totally volunteer-run organisation, and has been restored and maintained by the volunteers since 1974. This volunteer effort certainly warrants celebration. It's wonderful to see the Navy is



strongly supporting this important event ...

- RAN Band recitals in rotunda, 1pm to 5pm
- Static displays from HMAS Cerberus, 1pm to 5pm
- Defence Force Recruiting displays, 1pm to 5pm
- Australian Navy Cadets displays and TS Voyager Open Day, 1pm to 5pm
- RAAF PC21 Aircraft display (TBC)
- Navy helicopter flying display (TBC)
- Navy Drone club flying (TBC)
- Ceremonial Sunset, Band Performance and Guard on Gem Pier and HMAS *Castlemaine*, including firing blank rounds, 7.15pm to 7.45pm

Australian Red Ensign – September 3

It is widely acknowledged that the global Merchant Fleet has been absolutely critical during the pandemic.

Over recent months Offshore and Specialist Ships Australia (OSSA) has valiantly lobbied state authorities to persuade them to fly the Red Ensign as a mark of respect to the seafarers en-

tering Melbourne under the West Gate Bridge on September 3 – Merchant Navy Day. Sadly, protocol somehow prevented this.

Similarly, Melbourne Maritime Heritage Network (MMHN) lobbied the City of Melbourne to fly the flag at Town Hall without success. However, the City of Melbourne found a way to indicate its respect for merchant seafarers in this great maritime city.

For those of you who missed it, we are delighted to report that the Red Ensign proudly flew in Victoria Harbour outside the Waterways Branch on September 3.

The Australian Red Ensign is the official flag to be flown at sea by Australian registered merchant ship. ●



Jackie Watts

CHAIR OF MELBOURNE MARITIME HERITAGE NETWORK
JACKIEWATTS@NETSPACE.NET.AU

10 YEARS ON

Looking back at Docklands News - 10 Years On

OCTOBER 2012 | ISSUE 80 |

DOCKLANDS NEWS

No school in sight

Docklands is no closer to getting a school of its own after South Melbourne was last month announced as the preferred site for a new government school.



The site of the new school, at 129-161 Ferrars St, is just over 3km from Docklands, which means it could be an option for Docklands families. However, they may not be welcome.

"Depending on enrolment numbers, students in the Docklands area may be accommodated," a spokesperson for Education Minister Martin Dixon said.

The spokesperson said it was too early in the design and development stage to confirm enrolment boundaries for the South Melbourne school.

Meanwhile, Docklands parents continue to consider various education options outside of Docklands.

Jewel Love has lived in Docklands with her husband and three-and-a-half-year-old daughter Ananda for the past year-and-a-half (pictured above).

The family has started thinking about options for Ananda's education, but choices are limited. Ms Love said the closest schools would still require driving through plenty of traffic.

"I imagine families will stop moving here if there are no options for schooling," Ms Love said.

Mytreyi Tanikella, mother of three-year-old twin boys, Kameswara and Karitikeya, said the

lack of a local school in Docklands would cause her family to move.

Martin Dixon's spokesperson said student growth in Port Melbourne and South Melbourne was further advanced than in Docklands.

However, the report identifies Docklands and Southbank as areas set for significant population growth. The report says that in 2011 there were 285 children aged between five and 12 recorded in Docklands and Southbank.

By 2031 this number is expected to grow to 2250.

Considering the expected growth in the school-age population, the community continues to advocate for a school in Docklands.

"We'd like to think that the idea of a school in Docklands is being pursued because of the growing population,"

Docklands Community Association president Roger Gardner said. ●

Open 24/7
genuine kinky escorts
5 mins to your door
CBD location

**We survived
COVID-19
RE-OPENED
Fully vaxxed
girls
to your door now!!**

Top Class of Collins Street
(03) 9654 6351
contact@topclassofcollinsstreet.com.au

水上娱乐活动空间十月开放

人们备受期待港区新的悬浮灵活娱乐活动空间ATET将于10月15日周六正式向公众开放。

Sean Car

ATET是一个之前用于修复历史古船Alma Doepel的驳船，经过无数个小时的修复改造，其结构即将完成，并将在港区开启其新的使命。

ATET位于维多利亚港的北码头，预计将为港区经济活动注入急需的活力和能量，尤其是在2019年8月中央码头关闭后，A-TET将为社区提供另一个宝贵的空间。

在10月14日周五的正式宣布和媒体活动之后，该活动空间将于10月15日正式向公众开放，届时将举办一场音乐活动，展示该场所的食品和饮料服务，以及壮观的水上景观。

ATET的策划人Jake Hughes告诉本报，在经历了一个具有“挑战性”，但“令人愉快”的改建之旅后，工作团队“非常兴奋”能够在墨尔本春暖时节开放。

Hughes先生表示：“我们已经忍受了多年的COVID疫情和大量的延误，目前正处于长



期以来的最佳状态。在这个天气变暖的时节开放，将是令人兴奋的。”

Hughes先生表示，从工程师、造船师、水管工和电工，到音响和灯光技师、场馆管理、设计和营销，有50多人参与了ATET愿景的实现。

他说，这是墨尔本第一个这样的活动空间，“在驳船上建造如此规模的活动空间”，而我们并没有“真正的教科书”。尽管该项目

带来了挑战，但没有什么是不可克服的。

Hughes先生表示，随着该项目的结构接近完工，幕后的努力正在使这个空间焕发生机真正成形，场地将准备就绪向公众开放。

他说，我们的目的是创造一个“真正有趣”和“真正放松”的环境，让客人有一种切实的感受。ATET可以承接一系列不同用途和兴趣的活动。



港区开发新酒店和会议中心

根据开发商Capital Alliance最新的大胆提议，Docklands港区商城可能很快就会有另一家高级酒店和一个可容纳1000人的新会议中心。

Sean Car

这家开发商最近在该商城区推出了新万豪酒店，并与澳大利亚国际酒店集团TFE Hotels合作，宣布了一项“首创”的混合用途提案，其中包括两个世界级的本地酒店品牌。

开发商首席执行官Mohan Du表示，9月份已向维州环境、土地、水和规划部(DELWP)提交了计划。由于“专用”住宿需求持续增长，他们将“加倍”投资酒店。

这座耗资3.4亿澳元的双塔项目由SJB Architects建筑设计所在当地设计，该项目将拥有澳大利亚最大的屋顶无边泳池，以及由TFE Hotels酒店和A by Adina物业公司在墨尔本所做的首次专门建造系列。

该项目还包括一个可容纳1000人的活动会议中心，位于连接两个酒店塔楼的天桥上，这是开发商在港区新愿景的不凡之处。会议中心具有360度的城市景观，将为墨尔本的高端会议场所增加另一个选择，并为港区创造一个具有重要吸引力的地方。

Du先生说，在港区发展了八年，把这个“最好的项目留到最后”，留在了他这个区域的最后一个地块上。

他说：“俗话说，把最好的留到最后，这些独一无二的酒店将与墨尔本其它住宅产品截然不同，我知道在2026年开放迎接客人时，我们将能够为此感到无比的自豪。”

“我们与TFE的合作是在疫情局势不稳定的时候开始并发展起来的。这听起来可能是老生常谈，但有两件事是肯定的，开发酒店极具挑战性，我们对与TFE一起打造世界级酒店的能力充满信心。”

捐助乳腺癌患者活动

今年10月是乳腺癌宣传月，Think Pink 基金会将在港区的生活中中心举办一场募捐活动。

Kaylah-Joelle Baker

募捐活动将包括三个有趣和实用的化妆大师班，由营养学家和生活中中心志愿者Lucia Cardamone主持，邀请所有人参加。

这个生活中中心在Yarra's Edge，免费提供帮助，支持乳腺癌患者及其家人和护理人员在乳腺癌旅程的任何阶段寻求专业的关怀。

新冠疫情使得生活中中心的运作变得更具挑战性，但Think Pink基金会的董事和赞助人以及生活中中心的创始人Irene Hendel OAM希望筹款活动有助于分享她们的信息。

Hendel夫人说：“希望有很多没有患乳腺癌的女性(在筹款会上)知道我们的存在，意识到我们为那些来找我们的女性提供完全免费的帮助，这些女性通常都很贫困。”

“女性可以应对大多数遇到的事情，但



是当她们因放疗或化疗而脱发和皮肤发生变化时，她们会感觉不像自己，并且感到非常脆弱。生活中中心一直非常关注这一点。”

除了化妆课程用于帮助患有乳腺癌的女性，该中心还有一个美发沙龙，又接着免费为女性佩戴假发。

自从2010年在St Kilda路的首个生活中中心，以及最近在港区开放的生活中心，已经帮助患者使用了“数千个”假发佩戴。

为了让生活中中心继续为乳腺癌患者的生

活带来改变，化妆大师班筹款活动将于10月8日、23日和27日下午1点至3点举行，费用为50澳元。

如要报名参加，请扫描二维码：



墨尔本40周年艺穗节

2022年墨尔本艺穗节是一个具有40年历史而值得庆祝的节日活动，这次艺穗节的主题“关于时间”也是弥补因COVID疫情而搁置了三年的节日。

Carol Saffer

今年艺穗节的首个表演将于10月6日以一个巨大的40周年生日派对拉开帷幕，一直持续到10月23日星期五。

Dockland港区居民可以享受观赏摇摆舞，这是由Lucy Guerin 公司和Matthias Schack-Arnott创作的当代舞蹈，于10月15日至22日在Yarra's Edge独特的Shed 21大棚专场上演。

这是一场关于时间的冥想，有着令人惊叹的景色和独特的艺术，舞者与悬浮的铃铛同步移动，在这种运动驱动的表演中嗡嗡作响、发光和鸣叫。

随着这群令人惊叹的女子与时间共舞，每一次起起落落都揭示了人类的力量和脆弱。

墨尔本艺穗节创意总监兼首席执行官Simon Abrahams说，这次艺穗节包括了新



的展览、充满活力的公共艺术和全新的艺术区域，使之成为最雄伟壮观的节日之一。

他说：“通过这个节日，我们正在书写未来的历史。”

“我们将这次免费活动作为回馈这座城市的生日礼物，包括免费参与的公共艺术作品，当然，还有我们标志性的艺穗游行。”

10月15日周六下午3点起，沿着Lygon街从Faraday街到Argyle 广场，欢迎参与或观看由社区团体、行进乐队、工会会员、遛狗者、变装皇后、时尚人士和公众组成的游行队伍。

欲了解更多信息：melbournefringe.com.au

Business Directory

Accounting



Maximising your profits by
minimising your tax

PH 9603 0066
www.rubiixbusinessaccountants.com.au

Fitness



All trainers are University Degree
qualified and we come to you!

www.justintimeworkplacehealth.com
www.justintimept.com

Pharmacy



Hours: Mon to Fri 8am-8pm & Sat 9am-1pm
 ☒ Pharmacy ☒ Giftware
 ☒ Magazines & Papers ☒ Tatstlotto
 ☒ Same day dry cleaning

66 Merchant St, Docklands (opposite Safeway)
 Ph: 03 9629 9922 Fax: 03 9629 9933
 Email: vicharbourpharmacy@nunet.com.au



WE KNOW VERTICAL LIVING
BETTER THAN ANYONE.
THAT'S YOUR ADVANTAGE.

9091 1400 | lucasre.com.au

Childcare



Ph: 9670 0880
 admin@giraffedocklands.com.au
 www.giraffedocklands.com.au



JOIN WITH A MATE
AND SPLIT THE JOINING FEE*

CARLTON DOCKLANDS WEST MELBOURNE



Hours: Monday to Friday 7am-8pm
Saturday 10am-6pm

Southern Cross Station
 Shop C8, 99 Spencer St, Docklands
 Ph: 03 9600 0294 ☒ Fax: 03 9600 0594
 Email: southerncrosspharmacy@nunet.com.au

Selling & Leasing
the best homes
in Docklands.

Nelson Alexander 846 Bourke St,
Docklands
9251 9000

Health & Beauty



SERVICES:
 ▶ Physiotherapy ▶ Massage ▶ Psychology
 ▶ Chiropractic ▶ Pilates ▶ Podiatry

HOURS
 Mon-Fri 8am-7pm | Sat 8am-12pm

4/860 Collins St, Docklands, 3008
 (03) 9088 3228 www.docklandshealth.com.au

Politician



FEDERAL MEMBER FOR MELBOURNE

142 Johnston Street, Fitzroy
 (03) 9417 0772
 adam.bandt.mp@aph.gov.au



Level 24, 570 Bourke St, Melbourne VIC 3000
 hello@re-define.com.au re-define.com.au

Community



Docklands Neighbourhood House provides social and educational opportunities for the community of Docklands.

A: 4 Wharf St, Docklands
 P: 9328 1126
 W: thecentre.com.au



www.victoriaharbourmedicalcentre.com.au

Victoria Harbour Medical Centre Telephone 9629 1414
 2-3/850 Collins Street Docklands 3008 After Hours 13 74 25
 Entry via Merchant St Fax 9629 4265
 Hours: Mon-Fri 8am-6pm, Sat 9am-12 noon



STATE MP FOR MELBOURNE

(03) 9328 4637 146 Peel Street
 office@ellensandell.com North Melbourne VIC 3051

Shopping



collinssquare.com.au/whats-on

Dental



NOW OPEN SATURDAYS

Mon-Fri 8:30-5pm
 (Tue, Thu until 6pm)
 Sat: 8:30-1pm

57 Merchant St, Docklands
 T (03) 9021 9487 | mob 0488 799 487
 (opposite Victoria Harbour Medical Centre)
 www.docklandsdentalstudio.com.au

Legal Advice



Working with individuals, families & business.

Tel: 9614 5122 Fax: 9614 2964
 www.pearcewebster.com.au

Real Estate



Selling, Buying or Leasing?
You must talk to us.

818 Bourke Street Docklands (Victoria Harbour Office)
 86 Lorimer Street Docklands (New Yarra's Edge Office)
 Phone: (03) 9936 9999 | Email: docklands@barryplant.com.au



35 Collins St, Melbourne collinsplace.com.au

Escorts



Mature Sophisticated Affectionate Discreet Genuine Affordable Escorts

96503295
 5 mins to your door!

paramour.com.au



At Rothwell Lawyers we deliver exceptional legal advice, and always focus on achieving the best outcome for our clients.

AREAS OF PRACTICE

- Business Structuring
- Commercial Law Issues
- Conveyancing
- Debt Recovery and Alternative Dispute Resolution
- Family Law
- Insolvency Advice
- IVOs
- Wills, Estates and Probate



EXCEPTIONAL PROPERTY MANAGEMENT DOESN'T COST... IT PAYS

Jannelle Marden
 0435 552 950
 jannelle@etonproperty.com.au



For the best fresh produce, gourmet food and specialty shopping, you can't beat Queen Vic Market.

Open Tuesday, Thursday, Friday
 Saturday & Sunday
 with plenty of affordable parking.


QVM.COM.AU



Melbourne's Finest Escorts can be at your door in 5min as we're located in the CBD

(03)9654 6011

Transport



Part-time book keeper or P.A 1 day per week (preferably Mondays)

Contact:
 artic.3@bigpond.com or 0417356762

DOCKLANDS NEWS

Talk to Docklands News owner Sean Car
 T 0433 930 484 E sean@hyperlocalnews.com.au
 about how to customise your campaign to our audience every month.



Fast-paced yet considerate, nuanced yet distinct.

Redefining the Melbourne buying and selling experience.

88 Lorimer Street, Docklands 3008
 falsomelbourne.com.au
 t. 03 9052 4665

Well well well, look what we have here. It's less of a suburb, more of a mini-metropolis fit with entertainment, dining, culture, shopping, and oh – that's a glistening waterfront. **Docklands** have come a long way from swamp land, turned bustling dock wharf within Port Melbourne's trade infrastructure, and then into its final form – the convenience capital of contemporary class. By reading this, you'd know that city-fringe living served with a side of boats-glistening-on-the-water is a dish only served exclusively here. And don't underestimate the power of the **CBD**, there's a reason why all real estate listings mention the distance from here to there. It will always be Melbourne's mecca for restaurants and boutiques, but it's increasingly upping its reputation for offering the best living lifestyle on the market. Imagine Pellegrini's being your local Tuesday night spaghetti before you retire upstairs on Bourke. Anyway, we digress. We're seeing a cosmic shift in the way we want to live, work, and play – less paying for land we don't want to mow and more modern comforts included in the package. This has cultivated a cultural appetite away from spreading out and instead spreading upwards for better views and pool access. Cue: **Southbank** and the award-winning precincts, developments, and apartment towers selling quicker than we could get this print ad together. And the people buying? They look on the upside, they consider the glass half full, and they take time to enjoy the details. They notice the wild black swans on the water, the second-dates on the rent-a-boats, the walk home from Marvel Stadium beating the end score. Between the tall skyscrapers and narrow laneways, **Melbourne's** inner city holds a world of possibility. From the locals that pour their creativity into elevating your dining experience to seeing the urban landscape rapidly evolve over time; this city's progress is defined by ambition and integrity. And that's how we like to spend our time on the **The Up Side of Melbourne.**

88 Lorimer Street,
Docklands 3008

falsomelbourne.com.au
@falsomelbourne