

The voice of Docklands | 道克蘭之音

# DOCKLANDS NEWS

■ Extra rate for Collins Wharf

Page 3



■ No funding for local school

Page 4

■ E-Gate's future is secure

page 5

■ Short-stays in the spotlight

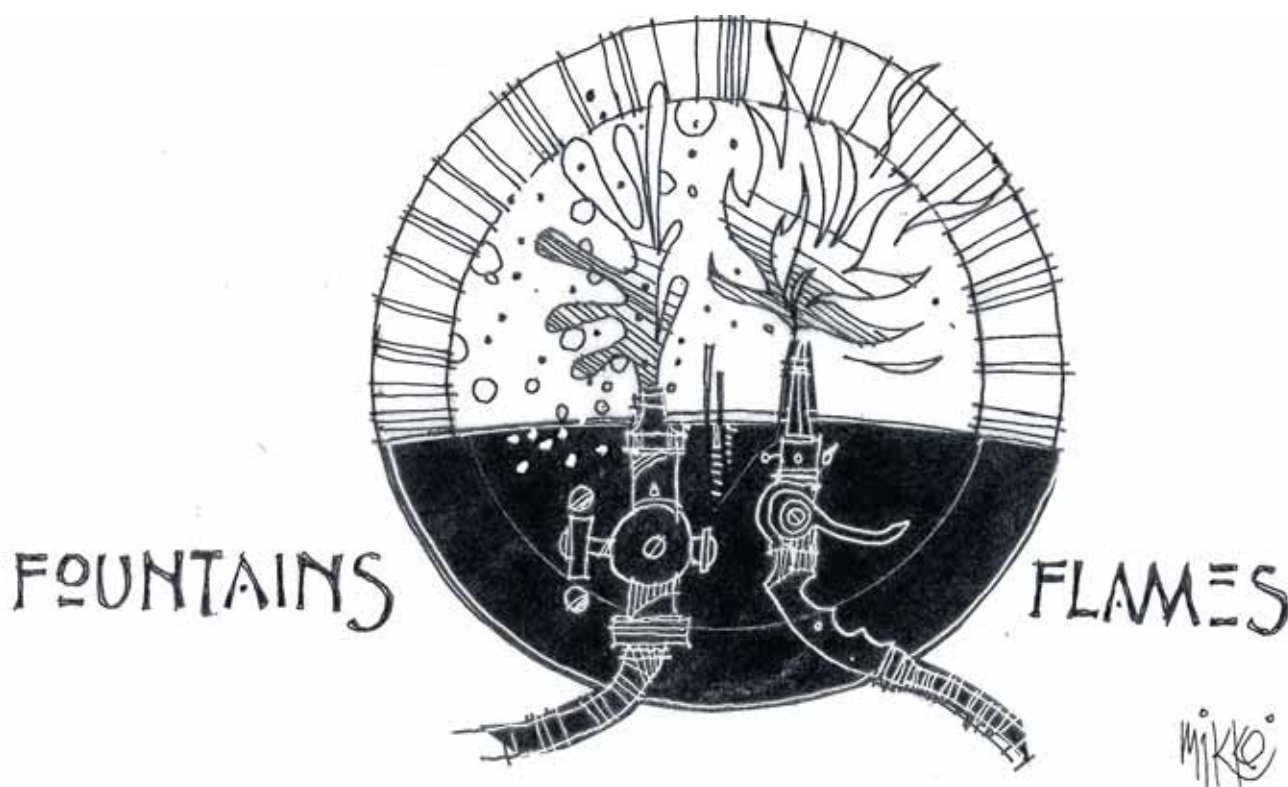
page 8



## Fountains and Flames extinguished

*Docklands is likely to miss out on a major tourism booster after the company behind the Fountains and Flames project confirmed it was seeking new destinations for the installation.*

*Continued on page 2.*



# No independent authority, just yet

By Bethany Williams

*Docklands will be waiting at least another two years for the establishment of an independent waterways authority.*

Minister for Environment, Climate Change and Water Lisa Neville last month announced her support for a new waterways committee under Parks Victoria, rather than an independent authority.

The move comes in response to the recommendations of the Lower Yarra River Use Future Directions Group's (LYRUFDG), which included the establishment of a single waterways authority in the form of a local port and committee of management.

Ms Neville said she was "not ruling out" the eventual establishment of a single waterways

authority but said more work needed to be done to determine a long-term solution.

She said work being done around the maritime safety review and Yarra River Protection Act would help to determine the best arrangement.

"We wanted to put in place something for the next couple of years while these works are going on," Ms Neville said. "This isn't the end of the story."

Docklands Chamber of Commerce President Joh Maxwell, who led a deputation of local stakeholders at a meeting with Ms Neville

last month, said the establishment of the new committee was a positive outcome.

"It's a positive step forward in what has been a long process," Mrs Maxwell said.

"It's great that we as a community had the opportunity to meet with the Minister and discuss our concerns about the future governance of the waterways."

"The chamber looks forward to the ongoing updates and the opportunity to participate in the ongoing development and planning process to ensure the jewel in Docklands' crown, our waterways, are activated," Mrs

Maxwell said.

The State Government has committed \$450,000 for Parks Victoria to establish and support the three-person committee to advise on the management of the Lower Yarra and allocation of berths over the next two years.

Parks Victoria will also engage an independent consultant to advise on strategy for commercial berth allocation and a probity officer to oversee the berth allocation process.

*Continued on page 9.*



**Local person wanted to "top up" Docklands News distribution baskets every Friday and Monday.**

1000 papers per week are replenished in high-traffic areas - Harbour Town, Costco, Woolworths, Spencer Fashion Outlet and Coles in Spencer St. Three hours per week required. Would suit retiree wishing to keep involved and active. Speak with Shane Scanlan - shane@mediacomms.com.au or 0419 542 625



**DOCKLANDS NEWS**

# DOCKLANDS NEWS Fountains and Flames extinguished

Suite 108, 198 Harbour Esplanade  
PO Box 23008 Docklands 8012  
Tel: 8689 7979 Fax: 9602 2929  
[www.docklandsnews.com.au](http://www.docklandsnews.com.au)


Advertising  
Shane Scanlan: 0419 542 625  
Tel: 8689 7979 Fax: 9602 2929  
[advertising@docklandsnews.com.au](mailto:advertising@docklandsnews.com.au)

Reader contributions are welcome.  
Please send articles and images to  
[news@docklandsnews.com.au](mailto:news@docklandsnews.com.au)

The deadline for the June edition  
is May 26.

Publisher: Shane Scanlan  
Editor: Bethany Williams

 Follow us on Twitter  
[@Docklands\\_News](https://twitter.com/Docklands_News)

 Like us on Facebook  
Docklands News

To download our iPad app,  
simply scan the QR code below:



*Continued from Page 1.*

FCT Flames initially offered the Fountains and Flames show to Docklands as an exclusive, permanent installation but is now looking elsewhere after local stakeholders failed to commit funding.

Around \$10 million was needed to build the installation and annual operating costs were expected to be around \$600,000.

FCT Flames says the City of Melbourne, State Government and local developers had all been briefed on the project but none of the parties had committed funding.

"We would love to install this attraction in Docklands as it has perfect viewing locations and waterway but we cannot continue to invest our time and money in a venture that has no buy-in from local council or State Government," FCT Flames CEO David Retallack said.

The Fountain and Flame show would have seen a large-scale fountain, which could also be transformed into a floating stage, installed in Victoria Harbour at the end of Central Pier.

The fountain would be programmed to music and could also incorporate flames, pyrotechnics, video projection and lasers.

"Docklands, we tried our best to bring something special to your world. An attraction that would be the envy of many cities and one that would be a significant tourist destination and driver of economic and entertainment appeal," FCT Flames

business development manager Mark Ryan said. "We will now be offering this exciting project to other cities in Australia and abroad."

The Docklands Chamber of Commerce has been vocal in its support for the proposal since it was first announced in early 2015 and president Joh Maxwell said the chamber was disappointed by the outcome.

"Support from the business community, residents and visitors who have seen what was proposed was enormous," Mrs Maxwell said.

"Victoria Harbour is the jewel in the crown for Docklands, Melbourne and can and should be a must visit venue when visiting the state of Victoria."

"The benefits of this activation would return to Docklands businesses, City of Melbourne and the State of Victoria we believed would outweigh the expense and would deliver lasting benefits ongoing 365 days per year."

"In terms of major event projects that happen in Melbourne already, the major upfront capital costs and relatively minor ongoing running costs make this option a win-win for everybody when you consider the overall benefit to the state."

A City of Melbourne spokesperson confirmed the council had decided not to provide funding for the project.

"The City of Melbourne regularly receives funding requests from companies for events and public installations. In this particular



*Artist's impression of the Fountains and Flames concept*

case, we felt that the business case was not convincing and that the significant public funds required to deliver this project did not represent good value for our ratepayers," the spokesperson said.

FCT Flames business development manager Mark Ryan said, while the company had not received a formal rejection from the State Government, conversation had stalled since a business plan was provided more than six months ago.

It's understood the Victorian Government considers the conversation to be ongoing and is awaiting further information from FCT Flames.

"The Docklands precinct is a great location in Melbourne and we want to grow its appeal with visitors," Minister for Tourism and Major Events John Eren said.

"We'll take a good look at any proposal that adds to our status as a leader for tourism, because it means jobs and a stronger state."

If you want to share your opinion about the loss of the Fountains and Flames project contact the Docklands Chamber of Commerce at [admin@docklandsc.com.au](mailto:admin@docklandsc.com.au)



## Mercedes-Benz Melbourne. Experience star quality.

As the largest Mercedes-Benz dealership in Victoria, make Mercedes-Benz Melbourne your only destination. We promise to help you find your perfect match from our extensive range of new and pre-owned Mercedes-Benz vehicles. Located in the heart of Melbourne, our experienced and multilingual sales team are here to assist you. Visit Mercedes-Benz Melbourne today and experience star quality.

135 Kings Way, South Melbourne or [www.mbmelbourne.com.au](http://www.mbmelbourne.com.au)



**Mercedes-Benz**  
The best or nothing.

Mercedes-Benz Melbourne

135 Kings Way, South Melbourne, 03 9690 8833. [mbmelbourne.com.au](http://mbmelbourne.com.au)

LMCT 6776



An artist's impression of the Collins Wharf precinct.

## Commuter ferry service imminent

*A ferry service connecting Docklands with the western suburbs is imminent, with Little Group announcing an official launch date for Port Phillip Ferries.*

Little Group will hold a launch event for the ferry service on Thursday, May 12.

“Esteemed dignitaries” and media have been invited to join Little Group founder and chairman Paul Little in a short trip along the Yarra River and introduction from the Little Group.

The ferry service will connect Docklands with Melbourne’s west, with stops expected to include Werribee, Point Cook and Wyndham.

The company has recently been tight-lipped about the service, declining to comment on plans for the ferry service when contacted by *Docklands News* last month.

It’s widely agreed across Docklands that more activity on the waterways, such as a ferry service would help to enliven the area.

The long-term plan for Harbour Esplanade includes provision for a ferry terminal.



The commuter ferry was spotted in Docklands last month.

# Extra rate for Collins Wharf

*Future Collins Wharf ratepayers will be hit with an additional rate by the City of Melbourne to fund the continued maintenance of the wharf their homes will be built on.*

It’s estimated the cost of maintaining the wharf over the next 50 years will be around \$51 million, with ratepayers to collectively contribute \$450,000 per year towards the maintenance program.

The move to introduce an additional rate is a rare occurrence in Melbourne, with the Lord Mayor commenting it was “new territory” for the City of Melbourne.

Lend Lease is currently awaiting ministerial approval for the Collins Wharf master plan, which maps out a new mid-rise residential and low-rise commercial precinct along the wharf.

The six-hectare wharf is expected to become home to around 2700 new residents and construction of the continuation of Collins St and rejuvenation of the wharf structure is planned as part of the development.

Places Victoria currently owns the land but it’s expected the wharf will be vested

by the Crown to the City of Melbourne as committee of management following development.

The decision to introduce an additional rate in this particular area of Docklands is due to the unique situation where a finger wharf will support future residential and commercial properties.

“That supporting structure and the road will provide the only access to the proposed housing and the developments and, therefore, it is recommended that the owners of those apartments and business areas should contribute to the long-term maintenance of that structure,” City of Melbourne engineering services manager Geoff Robinson explained.

Cr Stephen Mayne said future purchasers of apartments at Collins Wharf would be made aware of the obligation.

“It’s an upfront charge so everyone is

clear before this proceeds that there is a liability, that there is a long-term maintenance question and that there is a contribution to that from the private owners and operators on that finger wharf.”

Another issue complicating the Collins Wharf proposal is that owners of the proposed low-rise commercial properties planned for the harbour side of the wharf cannot be given freehold status because they will depend on the public wharf.

A Lend Lease spokesperson said the company was unable to comment as Collins Wharf was still subject to planning approvals.

Alongside the commercial and residential developments, the Collins Wharf project will also include new public facilities and parks including a health and wellbeing centre and an “Eco Park” at the western tip.



## Melbourne’s new waterfront elite

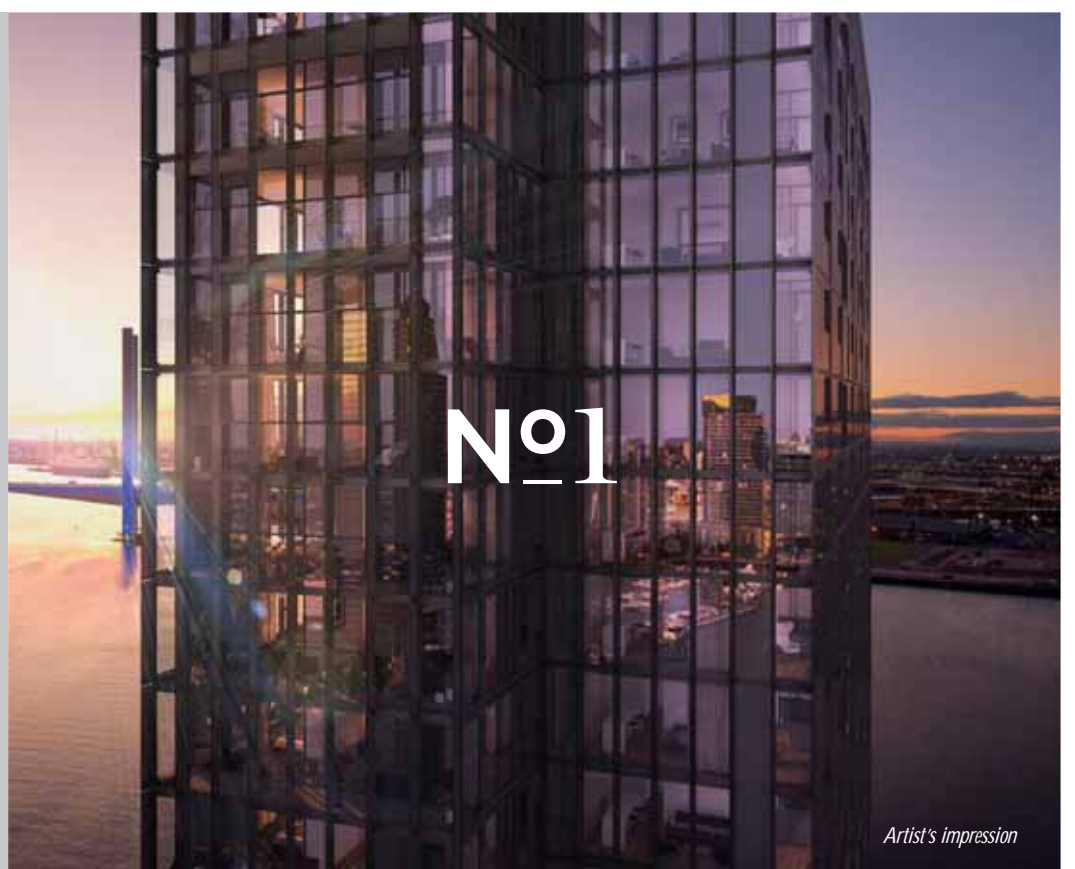
The architectural and lifestyle benchmark for Melbourne’s reinvigorated wharf precinct. No.1 Collins Wharf sets the tone for privileged waterfront living. Exceptionally designed apartments and terrace homes with dual harbour and river aspects.

Now selling

03 8610 4800 | onecollinswharf.com



The information contained in this advertisement was correct at time of publication. Individual apartment features may vary and are subject to change. The developer reserves the right to make changes without notice. Prospective purchasers should rely on their own enquiries. Images are artists’ impressions and are indicative only.



Artist’s impression

# No funding for local, public school

**Don't hold your breath on news of a local school in this year's state budget.**

Local lobby group City Schools 4 City Kids says government representatives have advised them that there would be no money in this year's budget to solve the Docklands and inner-city schools crisis.

The Docklands-based group, founded by local parents Michelle Styles and Denise Fung-Henderson, met with representatives from Department of Education and Training (DET) and Education Minister James Merlino's office last month.

"I think it's sad that generation after generation of children in Docklands are missing out," Ms Styles said.

"If they don't commit the funds, even for planning, in this budget, it's just being delayed further and further."

"You haven't just got Docklands, you've got Arden-Macauley, E-Gate, Fishermans Bend."

For Ms Fung-Henderson, the lack of decisive action on a local school comes down to politics.

"We're not a marginal seat, that's the bottom line," she said. "There's no political will to do it," she said.

The Education Department did not answer questions about whether any funding would be committed to a Docklands or inner-city school in this year's budget.

While there will be no funding in this year's budget for an inner-city school, the Docklands school provision review is moving into stage two.

But City Schools 4 City Kids still holds concerns about the accuracy of stage one of the review.

Both Ms Styles and Ms Fung-Henderson say data published in the stage one school provision review report, released in February, does not accurately reflect current enrolment levels at schools Docklands children are zoned for.

Both Ms Styles and Ms Fung-Henderson are part of the review community reference group and say they raised issues with the data used when reviewing the draft report.



The children of City Schools 4 City Kids members.

"A few of us who reviewed the draft report believed the data was flawed, yet the same data was used in the final report," Ms Styles said.

"It just underestimates the problem we have."

Ms Styles also raised issue with the fact the forecasts used in the report were formulated by the education department itself rather than an independent body.

Education Department spokesperson Steve Tolley said the stage one report included a range of robust data from independent population experts, school level data and department data.

"There is a range of analyses in the report, which includes examination of historic enrolment trends and forecasted growth. The analysis in the report has been conducted by independent consultants with data expertise."

"Taken collectively, the data is a robust estimate of future demand for schools within the study area and we make every effort to ensure they provide as accurate a picture as

possible in order to effectively plan for the future," Mr Tolley said.

"Stage one found that although schools in the area have enough room to meet current demands, some areas are beginning to reach capacity and more room will be needed by 2031. It also found that the location of schools means some areas are better catered for than others."

"It is this increase in demand that had led to stage two of the study getting underway. It will look at options to better meet the needs of Docklands residents."

"The department will carefully consider any issues raised by the Community Reference Group or the wider community," Mr Tolley said.

According to the stage one review, there will be demand for up to 565 primary school and 240 secondary school places in Docklands by 2035. However, the trend for Docklands families to move out of the area once their children reach school age means the number could be much higher if a local school were available.

"The (forecast) number will never be the real number," Ms Fung-Henderson said.

"If you look at the playgroup number and eventually the primary school number, for every family who chooses to stay there are at least three or four families who choose to move out."

"The number could be five times what it is (if there were a local school available)."

City Schools 4 City Kids says it will continue to campaign for local primary and secondary schools and are planning a number of events including a "design your dream school" competition. See our story on page 15.

"We've already received over 1000 signatures on our petition calling for money in the 2016 budget for a city school," Ms Styles said.

Ms Styles called for anyone yet to sign the petition to do so online at [www.cityschools4citykids.com](http://www.cityschools4citykids.com)

"The more signatures we have the more support we can show the government we have," Ms Styles said.

## DELICIOUS DINING ALL DAY

Open 6.30am – late, Mon to Fri

Individual retailer hours may vary, visit our website for details

[collinssquare.com.au](http://collinssquare.com.au)

COLLINS SQUARE

727 Collins Street, Melbourne

Bar Nacional

BIG ITALIANO  
PIZZA PASTA COFFEE

chiara

DE MAD HATTER

edamama

harvest  
LIVE. LIFE. DELICIOUSLY.

HUDSONS  
COFFEE

Long Shot

MR COLLINS

Nashi  
Sandwich & Coffee Bar

Papadum

PHUMBS

salsas  
fresh mex grill

SOBO  
JAPANESE

SUBWAY  
eat fresh.

thinkasia

## Docklands keeps growing

*Docklands is Melbourne's fastest growing inner-city area according to recent ABS statistics.*

According to the ABS data, Docklands population grew around 8.8 per cent, or by 714 people, between 2014 and 2015 and currently sits around 8871.

Docklands saw the highest population growth percentage-wise, followed by the CBD (8.3 per cent) and Southbank (8 per cent).

Overall, the Melbourne municipality grew by 5.6 per cent, or 6813 people, between 2014 and 2015 and greater Melbourne was Australia's fastest growing capital city, with a 2.1 per cent increase in population.

An average of 1760 people were added to Melbourne's population each week, totalling 91,600 people in 2014-15.

According to Planning Minister Richard Wynne, the government is planning for Melbourne's rapid population growth.

"We need to make sure housing is available to everyone, delivering housing options throughout the city with the access to education, health services and transport people deserve," Mr Wynne said.

"We are the world's most liveable city, the country's sporting capital and Victoria is the education state - people are naturally drawn to Melbourne and we need to plan accordingly."

The government says it is planning for future growth in a variety of ways.

With regard to the inner-city, there are plans for the development of 640 hectares of land within five kilometres of Melbourne's CBD, allowing more people to live closer to inner city jobs.

The Fishermans Bend taskforce is also drafting plans for five separate neighbourhoods, which will eventually become home to 80,000 people.



The most recent E-Gate designs show the Wurundjeri Way connection skirting around the border of the E-Gate site.

## E-Gate is saved

*Concerns the Western Distributor toll road could destroy the E-Gate urban renewal project were quashed last month by the release of new designs for the road.*

Initial plans for the Western Distributor appeared to show an exit road cutting through the 20-hectare E-Gate site to Docklands' north.

However, new imagery indicates the road will run along the railway perimeter of E-Gate rather than through the middle of the site.

"The design of the Western Distributor is still being finalised and we don't anticipate any significant impact on the E-Gate precinct," a State Government spokesperson said.

The government last month committed \$1.46 billion to the project over four years.

Toll-road operator Transurban, which proposed the road via the government's market-led proposals guideline process, will fund the remainder of the estimated \$5.5 billion needed to build the road.

The government and Transurban also last month signed an agreement on processes for the tender, planning and engagement stage and announced the establishment of the Western Distributor Authority.

Construction of the new toll road is expected to begin in 2018 and the current plan includes a tunnel under Yarraville, an elevated road built above Footscray Rd, along with two additional lanes in

each direction on the Westgate Freeway (between M80 Ring Road and Williamstown Rd).

The aim of the road is to provide an alternative to the Westgate Bridge, remove trucks from local streets and reduce travel times from the west.

At the CBD end of the road, the current design includes a connection with CityLink to the north and exits onto Dynon Rd, Footscray Rd and Wurundjeri Way.

Wurundjeri Way will be extended north from Dudley St, along the railway perimeter of the E-Gate site, to connect with the Western Distributor and with Dynon Rd.

The Wurundjeri Way connection is intended to provide a city bypass for people travelling from the west of the city to south.

The government and Transurban are seeking feedback on the Western Distributor design options and commenced community consultation last month.

Docklands residents and stakeholders are invited to have their say on the Western Distributor plan at a community session this month at the Limelight Room at Etihad Stadium from 5pm to 8pm on Tuesday, May 3.

Visit [www.westerndistributorproject.vic.gov.au](http://www.westerndistributorproject.vic.gov.au) for further information.

## CoM considers Distributor

*The City of Melbourne has called on the State Government to consider the potential impact of the Western Distributor project on the value of the E-Gate site.*

The Council made the statement in response to a call for submissions on the Western Distributor Environmental Effects Statement (EES) scoping requirements.

The draft scoping requirements call for the EES to describe the current and proposed uses for required land that may be affected temporarily or permanently by the toll road project in areas including E-Gate, Arden Macaulay and Fishermans Bend, among others.

But the City of Melbourne says the EES should also "value the impacts of the project on the land and compare the value of the land when used for project use as well as other uses to which it might be put if the project were conceived differently."

The current design for the CBD end of the project would see three exits, connecting with Dynon Rd, Wurundjeri Way and Footscray Rd.

Current designs indicate Wurundjeri Way would be extended along the railway perimeter of the E-Gate site, connecting with the Western Distributor and with Dynon Rd.

This was a change from previous designs, which appeared to show the road cutting through the middle of the E-Gate site, having major ramifications for the planned urban renewal.

Along with calling for a thorough examination of the impact of the Western Distributor project on land values, the City of Melbourne made a number of other suggestions relating to both Docklands and E-Gate in its submission.

# market update magazine...

Everything you need to know about the Docklands market plus so much more!

## available now

Request your free copy today by contacting [docklands@barryplant.com.au](mailto:docklands@barryplant.com.au)

**BarryPlant**  
Your real estate experience

# Esplanade trees are struggling

*The avenue of Norfolk Island Pines lining Harbour Esplanade at Docklands is struggling only five years after they were planted.*

Designed to be a major landscape element and bring seaside character to Docklands, the trees appear to be failing to thrive.

There are approximately 170 Norfolk Island Pines on Harbour Esplanade and *Docklands News* counted around 16 dead or dying trees last month, or around 10 per cent.

The remaining trees are sparse, and lacking full canopies despite being planted years ago. There is also a notable difference between trees situated on the harbour side compared to the city side of the Esplanade.

*Docklands News* counted four dead trees on the city side of the esplanade and 12 dead trees on the harbour side.

The City of Melbourne is responsible for monitoring and managing the trees and a spokesperson said the council was aware of health issues in some of the trees and had been working to determine the cause.

"These trees were planted in a confined growing area, similar to that of a planter box. This was due to the existing concrete infrastructure under the road restricting the amount of suitable soil for growing Norfolk Island Pines," the spokesperson said.

"It is always a challenge to grow vegetation where soil volume is limited."

The spokesperson said council had audited the irrigation system and established that an adequate water supply was being provided to the trees.

"We are also testing the soil structure to establish nutrient levels and whether salinity may be a contributing factor."

Both City of Melbourne and Places Victoria were involved in the process of selecting the trees for Harbour Esplanade.

Places Victoria general manager Simon Wilson says the organisation sought horticultural advice on which tree species to plant along Harbour Esplanade in 2009.

"Norfolk Island Pines were identified as



Many of the Norfolk Island Pines on Harbour Esplanade are struggling.

a species suited to coastal environmental conditions where wind, salinity, airborne salt and drought are present," Mr Wilson said.

"The pines were also selected because they have the ability to provide shelter from the wind and sun on maturity."

"Norfolk Island Pines form iconic avenues at a number of waterfronts around Australia, including Manly, Botany Bay and Robe. It is envisioned these trees will contribute to our vision for Harbour Esplanade to become an iconic waterfront too," Mr Wilson said.

"Less than 5 per cent of the trees have been replaced since planted in 2011. With any planting of advanced trees it can be expected that not all will take to the local environment."



Lord Mayor Robert Doyle at the launch of the second year report of the Melbourne Retail and Hospitality Strategy 2013-2017.

## Docklands' jobs are through the roof

By Nicholas Li

*The number of jobs in Docklands grew by 39 per cent in 2015 from the year before, according to new data published by a joint report by the Victorian Government and City of Melbourne.*

The data, collected by City of Melbourne, indicates that about 53,000 jobs exist in Docklands.

The second year report of the *Melbourne Retail and Hospitality Strategy 2013-2017* also showed that, more generally, visitor numbers to the City of Melbourne are rising, with the daily average weekday population of people entering the city up to 854,000, an increase of 10,000 from the first report.

At the launch of the report, Lord Mayor Robert Doyle said the hospitality and retail industries were driving the city's economy.

"What this latest report shows is that retail and hospitality is absolutely booming in Melbourne. An economy just in the centre of the city that is now \$90 billion,

retail and hospitality makes up \$5.5 billion, which makes it a big employer and a big contributor," he said.

In responding to questions about how growth would be continued in the city, Cr Doyle said Docklands was a priority area.

"What do you do to build on success? There are opportunities in places like Docklands," he said.

Mr Doyle also reassured hospitality business owners of the city's strong anti-lockout law stance.

"They did not work for our city. From what I hear in Sydney, King's Cross - that thriving centre - is pretty much a ghost town at night. In Melbourne we've gone the other way. We've actually said that we're going to have a normalised culture of the city late at night," he said.

Goodlife. 24·7

DOCKLANDS

NOW OPEN

GOODLIFE.COM.AU/DOCKLANDS

MEDIBANK PLACE - 720 BOURKE ST (ENTRANCE OPPOSITE GATE 2 ETIHAD STADIUM)

Goodlife. HEALTH CLUBS

# Fair and equitable would be fine



**Comment**  
**Shane Scanlan**



**Pictured (right) is the City of Melbourne's "corporate ad".**

It's the council's prime means of communicating with you, but it's been some time since Docklanders have seen it.

The council spends \$145,000 each year publishing its "corporate ad" in four publications - none of which circulate here in Docklands.

On the other hand, the council is happy to pay to have its ad seen outside the municipality in: Abbotsford, Aberfeldie, Alphington, Airport West, Ascot Vale, Avondale Heights, Brunswick, Clifton Hill, Collingwood, Essendon, Fairfield, Fitzroy, Gowanbrae, Keilor East, Keilor Park, Moonee Ponds, Niddrie, Northcote, Oak Park, Preston, Reservoir, Strathmore, Strathmore Heights, Thornbury and Travancore.

The council says the ad is to communicate "upcoming relevant council information to residents and businesses".

In the example pictured, the council talks

about the opening of its new Docklands community hub. What a pity no one in Docklands saw it.

One of the council's four selected publications claims to circulate in Docklands. This is wrong. But surely the council knows this? How hard can it be to have an understanding of local newspaper circulation within a municipality?

Are they that far out of touch?

The answer is yes - deliberately. That's why the council outsources the "research" to a multi-national, London-based agency - which is akin to using a sledge-hammer to crack a nut. I doubt that we were even considered by this agency and the council refuses to (because it can't?) provide evidence to the contrary.

Some years ago, the council distanced itself from its media buying to avoid embarrassment for its support for the then-monthly publications of Deputy Lord Mayor Susan Riley.

It was in one of her publications that Docklanders would have last seen the council "corporate ad".

Readers will have worked out by now that this story is a whinge because my publications have been consistently overlooked for this council spend.

My preference would have been to meet with the relevant council officer to explain the situation. This request was rejected. Instead, an attempted justification of the present situation was provided several weeks later.

I'd heard the incorrect claim of duplication of readership in the past, but this time there was the added claim that my publications were unsuitable because of their monthly publishing schedule. This effectively closes the door on Docklanders ever seeing the council's "corporate ad".

It's worth noting that Cr Riley's council-supported monthly publications are now defunct.

I have three publications and, between them, they serve nearly half of the City of Melbourne's 128,963 residents. The ABS estimates that there are 60,496 people living in the CBD, Southbank and Docklands (33,433 in the CBD; 18,192 in Southbank and 8871 in Docklands).

To be fair, there is some duplication of readership in the CBD. But there are no other publications circulating in Docklands and Southbank.

This month in my *CBD News*, I report on an instance which shows that the City of Melbourne doesn't mind paying big money when asked by big media players.

In December, behind closed doors, it ignored its officers' advice to refuse a charity request from a private company run out of the Herald-Sun for \$230,000 in sponsorship.

I mention this to illustrate that the council is happy to override officers' recommendations when it suits them. On other occasions, it can piously find reasons why it is inappropriate to even talk about things believed to be the remit of officers.

At the February 16 Future Melbourne Committee meeting, a residential councillor wanted to talk about the value of including *CBD News*, *Southbank Local News* and *Docklands News* in the council's campaign to publicise this year's elections.

The Lord Mayor, Robert Doyle, closed him down saying: "I think we've got to be very, very careful here. Councillors have never involved themselves with decisions around how that information is to be disseminated through the media. And, the moment we do, I think that is fraught with governance danger - that we would involve ourselves in decisions about where the media spend should be," Cr Doyle said.

I am not a charity and I don't seek special treatment.

Fair and equitable would be fine.

**Whittles**  
Owners Corporation Management Services

With thousands of properties under management throughout Australia, Whittles has established itself as a leading owners corporation manager nationally. With a growing portfolio of high profile and prestigious high-rise apartment buildings, Whittles is proud to be associated with Docklands.

[whittles.com.au](http://whittles.com.au)

For superior owners corporation management services, **contact the Docklands dedicated team**  
Whittles, Level 1, 838 Collins Street, Docklands VIC 3008  
T 03 8632 3300 E [info.docklands@whittles.com.au](mailto:info.docklands@whittles.com.au)

**Elm & Stone**  
NEWQUAY

**CITY LIVING  
FRAMED  
BY NATURE**

Contemporary city residences  
from \$384k coming soon.

NewQuay Sales Centre open daily 10am - 5pm  
24 NewQuay Promenade, Docklands or call 1300 137 590

**MAB** [elmandstone.com.au](http://elmandstone.com.au)

# Passing the buck on short-stay issue

By Shane Scanlan

## Residents seeking relief from sharing their apartment buildings with short-term tenants will be disappointed that Consumer Affairs Minister Jane Garrett appears ready to divest herself of the problem.

In the recently-released *Consumer Property Acts Review Issues Paper No. 2*, which includes a review of the Owners Corporations Act 2006, it is recommended that decisions about how apartments can be used be taken away from owners' corporations.

The review suggests that local planning schemes might be a better way to deal with how property can be used.

"... the question of whether a particular land use is appropriate is a matter to be addressed in the planning scheme and not through rules made by an owners' corporation," the review states.

Prominent strata lawyer Tom Bacon says it would be a "cop-out" to pass the responsibility for short-stays to local councils and would result in a piecemeal and unwieldy response.

"The councils have only finite resources

to change their plans and do not have big budgets for legal fees to battle Air BnB and others in the courts from building to building, all over the city," Mr Bacon said. "This is not a local issue. The issue is state-wide, national even."

Mr Bacon said Planning Minister Richard Wynne could choose to legislate that short-term letting become a controlled activity that requires a town planning permit.

"The simplest way around this is for the Minister to simply insert an amendment into the Victoria Planning Provisions by gazette, pursuant to Part 1A of the Planning and Environment Act 1987," he said.

Mr Wynne told *Docklands News* he was yet to read the issues paper, but cautioned against any statewide approach that might deliver unintended consequences.

He said he reserved his response to the paper until he had learned more about it.

Also in the Consumer Property Acts Review Issues Paper No. 2, its authors support the introduction of the short-stay status of a building into an owners' corporation statement for prospective buyers.

"The Act does not require owners' corporation certificates to include information for prospective buyers about whether the relevant planning instrument allows the apartments in the building to be let for short-stay accommodation, and

if so, how many are available for short-stay accommodation."

"This information may be relevant to investor-buyers intending to let the apartment for short-stay accommodation, and to other buyers who do not wish to live in a building in which short-stay accommodation is permitted."

And while Consumers Affairs gears up to pass the issue to Planning, the Grattan Institute takes the opposite view and has called for increased powers for owners' corporations to control the issue.

In its new report *Peer-to-Peer Pressure, Policy for the Sharing Economy*, it says: "State governments should give owners' corporations more powers to control short-stay rentals, possibly even the power to ban continuous, whole-premise short-stay rentals if agreed to by members."

"The short-stay rentals can affect neighbourhood amenity, divide members of owners' corporations and displace longer-term renters. They can make it easy to circumvent zoning and other regulations," the Grattan Institute says.

However, it recommends that governments be taken out of any decision-making to ban them and that local government be empowered to control breaches of amenity.

"Local governments should focus on controlling disruptions and protecting

amenity, not primarily on limiting short-stay rentals," the institute says.

"Local governments should respond where disruption from a specific property is troubling neighbours. They should allow occasional or single-room short-stay rentals, and only restrict continuous whole-premise short-stay rentals if there is strong evidence they are damaging neighbourhood amenity."

"State governments can also play a role by allowing owners' corporations to be more effective in managing short-stay rentals."

"They could enable owners' corporations to hold owners liable for disruptions caused by their guests, and consider allowing owners' corporations to control continuous, whole-premise short-stay rentals as they see fit."

The president of the Victorian Accommodation Industry Association (VicAIA), Paul Salter, backed the Consumer Affairs approach, saying OCs had no skills or expertise in legal matters.

"It is not the role of an owners corporation to police the common property or interfere with any tenant or owner in regard to use. They have no legal standing to dictate how an owner or tenant should use their property," Mr Salter said.

"That responsibility rests with the Victorian Government and the Planning Minister who has the resources and legal expertise to make the appropriate choices regarding land use."



602/565 Flinders Street Melbourne



**GREAT VIEWS ACROSS TO THE CROWN**

\$400,000



4001/100 Harbour Esplanade Docklands



**BEAUTIFUL PENTHOUSE APARTMENT**

\$2,200,000



2703/80 Lorimer Street Docklands



**RENOVATED TO AN INCREDIBLE STANDARD**

\$1,850,000



1708/673 Latrobe Street Docklands



**A SHORT STROLL TO SOUTHERN CROSS STATION!**

\$500,000



625/53 Spencer Street Melbourne



**SUITABLE FOR BOTH THE OWNER OCCUPIER OR INVESTOR**

\$450,000



903/1 Point Park Crescent Docklands



**DIRECT WATER FRONTAGE WITH A CBD BACKDROP**

\$980,000



**SALES**

Glenn Donnelly

m: 0419 998 235

e: glenn@cityresidential.com.au



**LEASING**

Lina D'Ambrosio

m: 0430 959 851

e: linad@cityresidential.com.au



818 Bourke Street, Docklands T: 9001 1333

**SELLING | LEASING | PROPERTY MANAGEMENT**

www.cityresidentialbourkestreet.com.au





Minister for Environment, Climate Change and Water speaking with Docklands stakeholders last month.

## No independent authority, just yet

Continued from page 1.

In response to the LYRUFDG recommendations \$2 million has also been committed for the development of floating berths at Southgate Wharf.

The LYRUFDG had recommended the establishment of a local port and a management committee headed by an independent chair charged with implementing the vision for the river and working with relevant parties to oversee and co-ordinate management of river issues.

It's widely accepted that the current situation, which sees intersecting pieces of legislation and multiple authorities overseeing management of the Lower Yarra has led to paralysis and a failure to unlock the potential of the waterways.

It's also agreed by many stakeholders that the economic success of the Lower Yarra depends on a single, visionary leader.

While private sector members of the LYRUFDG had wanted the management committee to be an independent group,

a compromised decision accepted the continued involvement of Parks Victoria as an interim solution.

Ms Neville said the interim governance arrangement with Parks Victoria would be in place for around two years and, in the meantime, many of the issues relating to the waterways would be resolved.

"What I think we have put in place today with this funding is to get everyone on the same page about achieving the outcomes and the vision the community has outlined to us," Ms Neville said.

"More work will be needed to get the long-term management right, but these first steps get key groups at the table to ensure consistent and clear decision making and accountability."

"We're proud to invest in the future of the Lower Yarra so business, tourism and locals can make the most of this great waterway for years to come."

## Enterprize in the spotlight

*Docklands' resident tall-ship the Enterprize was in the spotlight last month when it took a starring role in an upcoming short-film*

The production team behind *Jolly Roger* chose the ship as the set for one of the scenes in the film and spent April 7 filming on board in Docklands.

According to the film's director and writer Kaiya Jones, one of the scenes features a pirate ship and the *Enterprize* proved to be a great fit.

"The basic premise of the film is a story about a depressed and lonely old man who regains his love for life with the help of some unlikely friends and a bit of imagination," Ms Jones explained.

It's not the first time *Enterprize* has been involved in a film-shoot, with general manager Michael Womack explaining that in

recent years the ship had also been featured in adventure/fantasy film *The Moon and the Sun*, ABC series *The Secret River*, a Matthew Flinders documentary and a number of other films and television shows.

Mr Womack said the ship was perfect for films with period settings or scenes such as *Jolly Roger*.

The *Enterprize* is a replica of the ship that brought the first European settlers to Melbourne from Tasmania in 1835 and was designed to be as similar as possible to the original ship.

"It's the only traditionally rigged ship in Australian and New Zealand waters," Mr Womack said.



Scenes from short-film "Jolly Roger" were filmed on board the Enterprize in Docklands last month.

## Randall Bradshaw answers your legal questions.

**Q** Can I come to a private arrangement about child support with my ex-partner?

**A** Many parents, with the assistance of their lawyers, come to a private arrangement about child support. Typically, this includes who will pay for private school fees, extra-curricular activities (such as sport and music lessons), as well as the amount for general child support. This is detailed in a legal document called a Binding Child Support Agreement, which is then lodged with the Child Support Agency.

Call for advice on wills, probate, estates and trusts; conveyancing and property law; family law; commercial law; litigation and dispute resolution.

Tolhurst Druce & Emmerson **Working with individuals, families & business.**

**Tolhurst  
Druce +  
Emmerson**  
Lawyers



**Tolhurst Druce & Emmerson** Level 3, 520 Bourke Street, Melbourne T 9670 0700 [www.tde.com.au](http://www.tde.com.au)

# BONUS FREE GIFT

Monday 2nd May – Sunday 29th May

Simply spend \$60 at your favourite fashion, beauty and homeware stores to receive a FREE\* Essie Nail Polish.



harbour town  
melbourne

[www.harbourtownmelbourne.com.au](http://www.harbourtownmelbourne.com.au)  

\*Terms and Conditions apply. Starts: 02/05/2016 Ends: 29/05/2016. Strictly while stocks last. Nail Polish colours may vary. See our website for full terms and conditions.



# New neighbourhood revealed

**Lend Lease is awaiting planning approval for the residential component of its Melbourne Quarter development in the south-east corner of Docklands.**

The developer has proposed three residential towers on the Flinders St end of the site, with two high-rise towers fronting Flinders St and a mid-rise building nestled behind and fronting a new public park.

In total, the development will deliver an additional 1644 apartments to Docklands and an estimated 3000 new residents.

A north/south lane will connect Flinders St with Collins St and will provide the main access between residential neighbourhood near Flinders St with the planned commercial precinct on Collins St.

According to a Lend Lease spokesperson, the laneway will start on Collins St and lead through to the neighbourhood park on the southern side of the development, then connecting with Flinders St via steps.

"Due to the varying site topography, a series of steps will descend through the residential precinct to Flinders St through a new pedestrian opening proposed in the heritage wall. A public lift will also be provided



*An artist's impression of part of the Melbourne Quarter residential precinct.*

adjacent to the steps," the spokesperson said.

"The northern part of the laneway will be a vehicle and pedestrian shared zone, with a vehicle-turning and drop-off area in the

centre of the precinct for vehicles entering from and exiting to Collins St. The southern part of the laneway will be pedestrian only, with access for emergency and maintenance

vehicles only when required."

City of Melbourne considered the Melbourne Quarter residential proposal at its April 5 Future Melbourne Committee meeting.

Councillors unanimously supported the proposal subject to a number of conditions.

The City of Melbourne has indicated it will not take on ownership or management of the neighbourhood park in the middle of the residential neighbourhood because minimum soil depths cannot be achieved.

According to a council report, Lend Lease had indicated it was impossible to achieve the required 1.5 metre soil depth and council says it would only be feasible to own and manage the park if these required design standards were achieved.

While the council will own and manage the north/south laneway following development, it has indicated it will not take responsibility for the stairs at the southern entrance to the lane.

According to the Lend Lease spokesperson, both the neighbourhood park and the stairs will be owned and managed by the master owners' corporation for the residential buildings and will be open to the public.

The proposal is currently awaiting approval from Planning Minister Richard Wynne.

## Reward your daughter

Girls thrive in our **Parallel Education** environment.

With **Small Classes & Award-winning Teachers** it's no surprise that *"academic results have been extraordinary"* (*Weekend Australian 23/1/16*).

**It's also why more parents choose Haileybury.**

**CITY  
CAMPUS  
NOW  
OPEN**



# HAILEYBURY

KEYSBOROUGH BRIGHTON BERWICK CITY BEIJING

[www.haileybury.vic.edu.au](http://www.haileybury.vic.edu.au)

# Premier's Active April at the YMCA

By Jack Hayes

*April emerged as a huge month for YMCA Docklands, with the gym celebrating both National Autism Awareness Month and the Premier's Active April Campaign.*

The program ran over two weeks with sessions covering exercise, nutrition and wellbeing tips for students from Jacana School for Autism.

YMCA "Future Leader", Matt D'Arcy volunteered his time to head the sessions - running the excited students through a host of exercises throughout the gym.

Premier's Active April encourages all Victorians to do 30 minutes of physical activity a day during April, something Jacana School for Autism teacher Matt Wilson said was incredibly difficult to ensure amongst his students.

"At our school, and at a lot of other special schools, there are a high percentage of students who are overweight or obese," Mr Wilson said.

"We talk to students about nutrition and fitness quite a bit, but sometimes it struggles to sink in. So that's why it is great to have another person, who they seem to really look

up to, reiterating the same points."

"A lot of the students tend to prefer video games over physical exercise, so what we are trying to do is integrate the two. In the breaks of games we try get them to do push ups or sit ups."

The community encouragement and support of disadvantaged groups is something starkly evident at YMCA Docklands.

The centre facilitates a number of programs assisting disabled, homeless and previously incarcerated people - something manager Andrew Ward is very proud of.

"We really pride ourselves on our community involvement. Particularly with our position in the city, it is really important to provide as much support for people of disadvantage as possible," Mr Ward said.



## Love is in the air!

*Docklands' own Baden Lucas married Meredy Sun in a twilight ceremony at Showtime, South Wharf on Friday April 1.*

110 people joined the happy couple in a cocktail celebration, including the bride's parents who journeyed from Liaoning in Northern China.

Celebrating alongside the happy couple was a very special bridesmaid, the couple's

cavoodle, Ginger Lucas - one of Docklands' most recognisable residents with almost 1000 fans on social media. Follow Ginger on Facebook [www.facebook.com/Gingerlucasdog](http://www.facebook.com/Gingerlucasdog) or Instagram @Ginger\_Cavoodle



2016 AUSTRALIAN HAIR INDUSTRY AWARDS  
**★ WINNER ★**  
**BEST BARBER BUSINESS OF THE YEAR 2016**

THE BARBER CLUB - DOCKLANDS  
 95 MERCHANT STREET  
 CNR BOURKE ST, DOCKLANDS, VIC 3008  
 (03) 9600 2511



info@thebarberclub.com.au  
[www.thebarberclub.com.au](http://www.thebarberclub.com.au)





The Coastal Risk Australia website shows how Docklands would be affected by low, medium and high sea level rises.

# Rising sea-levels could see Docklands underwater

*Parts of Docklands could be underwater by 2100 according to new climate change modelling released last month.*

The Coastal Risk Australia website allows users to see how rising sea levels could affect different parts of Australia by 2100, based on findings from the Intergovernmental Panel on Climate Change.

The website looks at three different scenarios ranging from sea level rise of 0.44 metres (low), 0.54 metres (medium) and 0.74 metres (high).

According to the website, if the sea rises by 0.74 metres by 2100, at high tide we would see much of the Docklands waterfront inundated with water.

Areas affected would include the end of Central Pier, Victoria Harbour Promenade, parts of Collins and Merchant streets, North Wharf Rd and large sections of the southern side of Victoria Harbour, including the ANZ site.

Parts of Harbour Esplanade would be inundated near Docklands Park. The water

would creep up to Buluk Park behind the Library at the Dock and the Shed 5 site next to the Mission to Seafarers would also be underwater.

At Yarra's Edge, much of Lorimer St will be affected, with the water also spreading across part of the low-rise townhouse precinct. Strolls along the Yarra's Edge waterfront would also be impeded, with the entire marina frontage expected to be underwater.

Surprisingly, the forecast suggests NewQuay will be relatively unaffected by rising sea levels.

It's anticipated only limited sections of the precinct will be affected, including overwater restaurant Cargo and Berth and a strip of land adjacent to Ron Barassi Senior Park.

If sea levels rise by 0.74 metres by 2100, the Moonee Ponds Creek will break its banks, creeping uncomfortably close to Harbour

Town and O'Brien Group Arena.

While the launch of the Coastal Risk Australia website last month has drawn attention to the issue of rising sea levels in waterfront areas such as Docklands, steps are being taken to lessen the impact.

Since 2008, the State Government has required authorities to plan for sea level rise of no less than 0.8 metres.

All buildings approved and built in Docklands since 2008 are required to have a floor level 2.4 metres higher than the average sea level.

However, given many of Docklands' buildings were constructed prior to 2008, we could see some buildings affected by rising sea levels, while their neighbours remain dry.

## We Live Here council panel

*Docklands-based association We Live Here is holding a panel discussion with City of Melbourne councillors this month.*

"As this is an election year, we thought it would be timely to invite representatives of from City of Melbourne to discuss what the council is doing for residents," We Live Here spokesperson Barbara Francis said.

"It is intended to be a fact-finding mission rather than a political meeting and will take the form of a panel discussion with a moderator."

The panel discussion will be held on Monday, May 9 at Library at the Dock from 6pm to 8pm. Registrations will be open from 5.30pm.

Attendees will be invited to ask questions on the night and can also submit questions beforehand.

Visit [www.welivehere.net](http://www.welivehere.net) for further details.

## Understanding dementia

*Docklanders are invited to attend an information session about dementia at the Library at the Dock this month.*

Hear from Alzheimer's Australia Vic about what it means to have dementia and what services are available to support families, carers and people living with dementia.

Find out what a healthy brain looks like, the key signs and symptoms of dementia and what to do if you or someone you know is concerned they may have dementia.

The information session will be held on Friday, May 20 from 12pm to 1pm at Library at the Dock.

## Giraffe Childcare Docklands **OPENING SOON!** Where your child comes first, everytime ...

- 🌟 Welcoming environment offering educational programs for your child
- 🌟 Our experienced, qualified and highly skilled educators ensure the highest standards of care
- 🌟 We value the uniqueness of your child



- 🌟 Parking from \$10 per day, free public transport to city, easy access from Citilink
- 🌟 Purpose built centre with generously equipped indoor and outdoor facilities
- 🌟 Fresh and nutritious meals cooked daily on site
- 🌟 We value an open door policy where parents are welcome to visit their child throughout the day
- 🌟 Mon-Fri 7am - 6pm / 6 weeks to school age
- 🌟 High staff to child ratios

**JOIN OUR WAITLIST! [www.giraffedocklands.com.au](http://www.giraffedocklands.com.au)**  
P 03 9670 0880 | E [admin@giraffedocklands.com.au](mailto:admin@giraffedocklands.com.au)



**Giraffe**  
Early Learning Centre  
**DOCKLANDS**

# New EPA boat launched

By Nicholas Li

*A new 12-metre, powered catamaran has been launched by the Environmental Protection Authority (EPA) in Docklands last month to monitor water quality around Port Phillip Bay and Western Port.*

Christened Bar-ba-ka, it replaces an 8.5-metre boat, which has completed 25 years of service.

The boat features a complete on-board laboratory to collect samples and an improved design to operate in harsher conditions.

At the launch of the boat in Docklands on April 20, the Minister for Environment Climate Change and Water, Lisa Neville, said monitoring was required during rain periods.

“All beaches in Port Phillip Bay and popular swim locations along the Yarra performed well over the summer period for the most part but there were significant periods of rain, which impacted on water quality in Port Phillip Bay and the Yarra, particularly those locations with stormwater outlets,” she said.

Minister Neville said sample collection was still the preferred means of assessing conditions.

“Despite advances in technology, there is no better way to monitor water quality than to collect samples; the Bar-ba-ka boosts our



The EPA's new boat Bar-ba-ka was officially launched in Docklands last month.

front line of defence in protecting our bays and beaches for all Victorians,” she said.

Bar-ba-ka means porpoise and was chosen following discussions with the Boon Wurrung community and Aboriginal culture

consultants.

Aside from collecting water samples, Bar-ba-ka will be responsible for attending to environmental emergencies and identifying pollution trouble areas.



## Spiegeltent networking

*Don't miss out on what is set to be a truly spectacular networking lunch at the Wonderland Spiegeltent.*

The June Docklands Networking Lunch is scheduled for Friday, June 17 at the Spiegeltent.

With a three-course meal, drinks and plenty of opportunities to get to know fellow Docklands stakeholders, it's set to be a great afternoon.

As always the networking lunch is \$60 per person. To secure your ticket contact Docklands News via [lunch@docklandsnews.com.au](mailto:lunch@docklandsnews.com.au) or on 8689 7979.

The CBD's largest outlet shopping centre.

# VIP DAY SALE!

**Friday 27<sup>th</sup> May**  
**10am – 8pm**

Fashion. Food. Convenience.

[spenceroutletcentre](http://spenceroutletcentre.com.au) | |

Located next to Southern Cross Station.  
Level 1, 201 Spencer Street Docklands





## May Docklands Social Club

*Make sure you put the next Docklands Social Club gathering in your calendar.*

This month the social club will meet on Wednesday, May 11 at Merchant Society, located at 71 Merchant St in Docklands.

Locals will gather at the restaurant from 7pm and everyone is welcome to attend.

The monthly gathering offers locals a chance to get to know their neighbours in a relaxed, informal setting.

Around 26 people attended last month's gathering at Momami at Peppers Docklands.



Around 26 people attended last month's social club gathering at Momami.



Brothers Charlie, Tom and Oscar explored the ArtVo gallery in Docklands last month.

## Step inside a whole new world

*Have you ever wanted to take a gondola ride through the canals of Venice? Would you like to visit the pyramids in Egypt or take a photo next to the leaning tower of Pisa?*

While you might never visit these locations, a new gallery in Docklands allows you to take amazing photos with these and other landmarks.

ArtVo at Harbour Town opened last month and offers visitors the chance to place themselves into a range of scenes including international tourist destinations, fantasy worlds and famous artworks.

Described as an "interactive 3D art gallery", ArtVo is the first of its kind in the southern hemisphere.

ArtVo director Hasan Celik said similar galleries existed in Thailand, Malaysia, Indonesia and Korea.

According to ArtVo general manager Elroy Dewitt, the Docklands gallery features hundreds of hand-painted images that allow visitors to immerse themselves in the different scenes.

"Taking amazing photographs is the main

objective," Mr De Witt explained.

"We will be putting up some posters to ensure visitors will know how to enjoy the visuals and how to take the photographs from using the best angles and poses."

The large-scale works have been painted directly on to the walls and floors of the gallery, while additional sculptural elements allow visitors to step into the artworks.

A team of 14 Korean artists created the artworks over 60 days, using 500 litres of paint to complete the task.

The gallery will be a permanent installation at Harbour Town and Mr De Witt said he hoped ArtVo would provide a new experience for locals and visitors.

"We hope to encourage lots of visitors to help Docklands become a great tourist destination," Mr De Witt said.

For more information about ArtVo visit [www.artvo.com.au](http://www.artvo.com.au)

## Design your dream city school

*What does your dream city school look like?*

Local lobby group City Schools 4 City Kids is running a "Design your Dream City School" competition this month.

The Docklands-based group, which is campaigning for a public primary and secondary school for local families, is calling for submissions from the community.

"We invite young and old, budding architects or retired ones to use whatever materials you like to design your dream school for Docklands," City Schools 4 City Kids co-founder Michelle Styles said.

Build it with Lego, design it on your computer, draw it, make it out of cardboard or build it with play-dough. The only limit is your imagination.

The group says one of the aims of the competition is to highlight that key decision makers should embrace community feedback about educational infrastructure.

Given inner-city residents live in vertical homes, they have a strong working knowledge about what does and doesn't work, the group says.

"We hope this competition will make them (the children) smile, get them excited and get the decision makers to start visualising a school for the city," City Schools 4 City Kids co-founder Denise Fung-Henderson said.

Send a photo of your design for a dream city school to [cityschools4citykids@gmail.com](mailto:cityschools4citykids@gmail.com), or post on Facebook or Instagram and tag #cityschools4citykids.

The competition opens on May 1 and entries will be accepted until May 31. Prizes will be awarded in four categories: early learning, primary, secondary and open.

The entries will be judged by leading architects and planners and prizes will be awarded in June.

The winning entries will be published in *Docklands News* and on the City Schools 4 City Kids website and Facebook page.

### KX PILATES DOCKLANDS

BRAND NEW KX PILATES STUDIO!

KX Pilates offers a revolutionary, fast paced, high intensity, body-toning workout that fuses the core strengthening elements of traditional reformer pilates with circuit, cardio and endurance training.

**FREE 5 CLASSES**  
BOOK ONLINE  
USE PROMO CODE 'OPENING'

**KX Pilates Docklands**  
8/16 Walkview Walk  
Docklands 3008  
[docklands@kx.com.au](mailto:docklands@kx.com.au)  
(03) 9972 2179  
[www.kxpilates.com.au](http://www.kxpilates.com.au)

\* Terms & Conditions: New clients to KX Pilates Docklands only. Five classes must be used within 14 days of first class, not day of purchase. One offer per person. Offer only valid at KX Pilates Docklands. Must be redeemed by 31st May 2018.



The Variety Entertainers of the Century mosaic was removed from NewQuay last month.

# Celebrities move out of NewQuay

**Don't go looking for Kylie, Edna or Graham at NewQuay Piazza. You won't find them.**

The bronze statues were removed last month in preparation for the construction of MAB Corporation's *Banksia* apartment tower.

The statues of Kylie Minogue, Dame Edna Everage, John Farnham, Dame Nellie Melba and Graham Kennedy were installed in the piazza in 2006, alongside 100 bronze plaques recognising and commemorating Australian celebrities, and known as the *Walk of Stars*.

The 11-metre long *Variety Entertainers of the Century* mosaic was also removed from NewQuay last month. The mural features 100 Australian celebrities from the past century, picturing them in their hey-day.

The works are currently in storage and it's unclear at this point where they will end up.

"The *Walk of Stars* bronze sculptures and star plaques along with the *Variety Entertainers of the Century* mosaic tribute have been removed from NewQuay Central," Places Victoria general manager Simon Wilson said.

"The artworks were removed to enable construction of MAB Corporation's *Banksia*."



Kylie waved goodbye to NewQuay last month.

# New City Circle trams

By Jack Hayes

**The State Government has announced the addition of two more of Melbourne's iconic W-Class trams to the city's tram network.**

The historic trams, which were first introduced to the network in the 1920s, will run on the City Circle route, bringing the history of Melbourne's iconic trams to visitors and locals.

The addition of these trams coincides with a significant increase of patronage in the city, and Docklands, following the introduction

of the Free Tram Zone – as more and more people are choosing to use trams to travel around the city.

According to Public Transport Victoria spokesperson Nicholas White, "there were more than 19 million extra tram trips in 2015 and the majority of this increase comes from trips made in the Free Tram Zone".



# Protestors gather in Docklands

**A crowd of Construction, Forestry Mining and Energy Union (CFMEU) members protested outside Lend Lease's Docklands headquarters last month over alleged unpaid wages.**

The CFMEU claims workers on Lend Lease's Bendigo Hospital project are owed weeks of unpaid labour by Lend Lease subcontractor Asset Interiors.

Asset Interiors has gone into administration and the CFMEU says the administrator had indicated that it appears Lend Lease owes in excess of \$1.4 million to Asset Interiors.

A Lend Lease spokesperson said the company was aware that a subcontractor

working on the Bendigo Hospital project had entered into voluntary administration.

"We are working with other contractors to assist with re-engagement of the impacted workers to complete outstanding works," the spokesperson said.

"Lend Lease has paid all amounts due and payable to Asset Interiors for work completed on the Bendigo Hospital project."

## SOUNDPROOFING WINDOWS

FOR BODY CORPORATE AND HERITAGE LISTED HOMES AND APARTMENTS

NO NEED TO REPLACE YOUR EXISTING WINDOWS TO ACHIEVE DOUBLE GLAZING

Stop Noise will come to your home for a FREE demonstration and show you how we can reduce noise by up to 70% coming through your existing windows.

Stop Noise secondary glazing system is equally as good as replacement double glazed windows for your thermal insulation and twice as good for reducing noise. There is simply no better option. Save money on your energy bills and get a great night sleep.

Stop Noise is a trusted family owned and operated Melbourne based business since 1995.

VISIT US ONLINE! [WWW.STOPNOISE.COM.AU](http://WWW.STOPNOISE.COM.AU)

Call today to organise a free assessment of your windows & doors  
 ☎ 1800 880 844    ✉ [info@stopnoise.com.au](mailto:info@stopnoise.com.au)



Office & Showroom- 15 Industry Blvd, Carrum Downs 3201







The Victorian Fair Trade Festival will be held at Library at the Dock this month.

# Learn about fair trade this month

*The annual Victorian Fair Trade Festival is coming to Docklands' library this month.*

Running from May 10 to May 28, during "Fair Trade Fortnight", the festival will celebrate all things fair as well as promoting sustainable environment and social responsibility.

Organised by Melbourne-based organisation, Moral Fairground, the festival will see a range of activities on offer at Library at the Dock.

The launch event on Saturday, May 14 will include fair trade certified chocolate tasting, a "sustainable comfort" workshop and an "up-cycle, recycle" workshop.

Throughout the two-week festival you can visit the Living Fair Trade Exhibition, and primary and secondary schools have the chance to participate in fair trade conferences.

Moral Fairground director Susana Bevilacqua encouraged all Victorians to embrace the activities hosted during Fair Trade Fortnight.

"The festival provides the opportunity to celebrate and learn about fair and conscious trading in an interactive way," Ms Bevilacqua said.

She said the festival was a yearly reminder that every purchase mattered.

"Fair Trade Fortnight is an inclusive worldwide celebration of events that promote fair trade and tangible and effective contribution to overcoming poverty and advocating for trade justice," Ms Bevilacqua said.

# Legal action on hold

*A group of NewQuay owners have put legal action against their own owners' corporation (OC) on hold, pending an upcoming annual general meeting (AGM).*

The owners, from Boyd, Palliadio and Sant'Elia, had intended to launch legal action after their OC committee nominations were allegedly rejected by a sub-committee comprising members of the existing OC.

A number of residents who submitted OC committee nominations received a letter from Boutique Property Management, on behalf of the OC, advising that a nominations sub-committee had found "there were other candidates who met the

criteria more fully."

Resident John Kakos says the group now understands all nominations will be considered at the May 4 AGM.

Mr Kakos said the group reserved the right to take legal action depending on what happens at the meeting.

Consumer Affairs says OCs do not have the authority to veto nominations.



Guests had a great time at Berth's Australia's Biggest Morning Tea event last year.

# Make time for tea

*Local restaurant Berth is gearing up for its annual Australia's Biggest Morning Tea fundraiser this month.*

The NewQuay restaurant hopes to top last year's result of \$6000 with its "high-tea" style event on May 26.

The annual Australia's Biggest Morning Tea event sees fundraising morning teas held across Australia to raise funds for the Cancer Council.

Berth invites local residents and workers to

join in the fun this year for a morning of door prizes, auctions, fun, games and a variety of hot beverages, sweets and savouries.

The Berth Australia's Biggest Morning Tea will be held from 11am on Thursday, May 26.

Tickets are \$25 each or five for \$100. Tickets can be purchased at [www.berth.com.au/whats-on/australias-biggest-morning-tea/](http://www.berth.com.au/whats-on/australias-biggest-morning-tea/)



Lyn & Peter have built a great rapport with property owners and many thousands of visitors to Docklands over many years.

Time is ripe for investors to consider the opportunity apartment owners derive from working with us. For investment information please call Peter on 9642 4220 or 0417 581 455

By staying at DPC, two Charities gain support from us - "The Alannah and Madeline Foundation - keeping children safe" and Motor Neurone Disease Research.

Shop 7, Lifelab Building, 198 Harbour Esplanade, Docklands | p: 9642 4220  
info@docklandsprivatecollection.com.au | www.docklandsprivatecollection.com.au



COME IN AND SEE PETER, LYN AND THE FRIENDLY TEAM

DOCKLANDS  
FACES OF

### Question: What is your favourite movie and why?



STEVEN WATT, 22, BAKER

My favourite movie is *Step Brothers*, because of Will Ferrell's performance.



TEGAN BEDDGOOD, 20, BETWEEN JOBS

My favourite movie is *Alice in Wonderland*, because I love the book, its twisted nature, and the writing of Lewis Carroll.



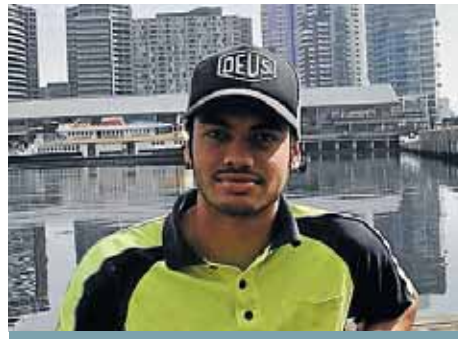
NICO LUNARDI, 29, JACK OF ALL TRADES

My favourite movie is *The Great Escape*, because it's a classic.



BRETT MALCOLM, 33, PUBLIC SERVANT

*Showgirls*, an absolute classic and my all-time fave.



BRANDON SMITH, 23, PLUMBER

My favourite movie is *Training Day*, because it has a great story about a crooked cop.



BLAKE GUEST, 21, PLUMBER AND PART-TIME STRIPPER

My favourite movie is *21 Jump Street* because it's funny.

## WIN A QUEENSLAND HOLIDAY!

Spencer Outlet Centre  
*Takes Flight!*

**WIN** return airfares to Queensland **PLUS**  
**7** nights accommodation for 2 people and  
**Skybus Airport transfers valued at \$3,000!\***

*How to enter:*

**Simply spend \$150** in any Spencer Outlet Centre store, **grab an entry form** and place in the entry barrel located near Trade Secret.\*

spenceroutletcentre | | |

201 Spencer Street Docklands VIC 3008 T: (03) 8689 7577

\*Terms and Conditions apply and are listed at point of entry. Promotion valid between: 26/4/16 – 27/5/16.



# Businesses in Docklands

DOCKLANDS-BASED BUSINESSES WISHING TO BE PROFILED IN THIS SECTION SHOULD EMAIL: [ADVERTISING@DOCKLANDSNEWS.COM.AU](mailto:ADVERTISING@DOCKLANDSNEWS.COM.AU)

## A DECADE OF QUALITY

*Having operated out of its massive showroom and service centre for almost 10 years, the team at Mercedes Benz Melbourne is highly experienced when it comes to providing quality service to its customers.*



The team at Mercedes Benz Melbourne.

As part of its ongoing effort to constantly enhance customer experience, marketing manager Laura Giordano revealed that the showroom would soon be the subject of major renovations.

"We're going up one level and there will be huge changes to the way the showroom looks, as well as the way our customer lounge is. We're making it a lot more customer-focused," she said.

"It will be a bit easier and more inviting for our customers to come into the dealership and the staff here is very excited as well for the building to get revamped."

Formerly known as Lanes Motors, which was first established in 1916 selling new and used vehicles, it wasn't until 1961 that the business sold its first Mercedes Benz.

The business boasts a long history in Melbourne having relocated to Sturt St, Southbank in 1985, before undergoing a name change in 1998 and taking on sole ownership in 2005 as Mercedes Benz Melbourne.

After relocating to its current home on Kings Way in 2006, Ms Giordano said the business had constantly sought ways to build a diverse team of caring staff members to respond to Melbourne's rapid population growth.

"We've got a team, which has Mandarin, Cantonese, Italian, German, Greek speaking members just to name a few so we're very diverse," she said.

"Melbourne is so diverse and we need to be as well to be able to cater to all of the new people and properties that are coming into Southbank."

While the centre is based only five minutes from Docklands, Ms Giordano said every single one of Mercedes Benz Melbourne's 170 staff members held the needs of local residents as a very high priority.

"Many locals are obviously business owners and they are very time poor," she said. "Whether we organise appointments and bring cars out to their businesses I think that's a huge feature. We are close to the city so we can do that for them."

"They're people that are around the corner from us and they're right in the heart of the city so being able to target those people's needs - whether it's students, whether it's retirees - is really important to us."

With renovations set to commence in November, Ms Giordano said customers could also expect huge changes to its new AMG high-performance showroom, which would include the addition of motorbikes.

She said the expansion and the forthcoming milestone of 10 years was a strong reflection of the success of Mercedes Benz in Melbourne.

"It's a fantastic time for Mercedes Benz at the moment. I think we've been top of the market for the last three or four years and that has been helped with Mercedes Benz Australia bringing out such incredible cars," she said.

"People are coming to our doors and these cars are almost selling themselves they're beautiful. It's a great time to be a part of Mercedes Benz."

Mercedes Benz Melbourne is located at 135 Kings Way, South Melbourne.

For more information visit [www.mbmelbourne.com.au](http://www.mbmelbourne.com.au)



## JUNIOR YEARS INFORMATION TOUR

Friday 20 May, 9.00am - 10.30am

Join Mrs Kellie Morgan, Director of Early Learning and Junior Years Programs, as she outlines the Melbourne Girls Grammar commitment to personal development and academic challenge within our nurturing environment. Explore the Junior Years (Prep - Year 4) world class learning facilities where curiosity is promoted and a passion for learning is ignited.

This information tour will be held at Morris Hall Campus, 100 Caroline Street, South Yarra.

Register at [www.mggs.vic.edu.au](http://www.mggs.vic.edu.au)



**MELBOURNE  
GIRLS GRAMMAR**  
AN ANGLICAN SCHOOL



# CHAMBER UPDATE

BY PAUL SALTER  
EXECUTIVE COMMITTEE MEMBER



## Boats on the water - Victoria Harbour

***If you have any interest in getting boats on the water or to travel from Victoria Harbour to the city on a regular basis, don't miss this meeting.***

The public meeting being hosted by the chamber with senior people from Parks Victoria and Waterways presenting their view of the future.

Limited seats are available for any interested person in the Docklands community to attend this special public meeting.

**When:** Thursday, April 28

**Where:** Berth Restaurant, 45 New Quay

Promenade

**Registration:** 5.45pm for 6pm start.

To attend you must register by emailing the chamber executive. Tickets are received by emailing [admin@docklandsc.com.au](mailto:admin@docklandsc.com.au)

Only allocated seating is available, absolutely no door tickets available.

No ticket, no entry.

**Google "Docklands" – Who is number one?**

The new chamber website is live and now tops the rankings in a Google search.

This provides members with a significant advantage to have their businesses easily

located online. Members should spend the time to update their chamber profile. All the advantages of social media have been included.

### Partnerships for Prosperity

The Victorian Government has released its new China strategy, Partnerships for Prosperity. It was actually the Victorian Chamber of Commerce that called for the development of a new international engagement strategy that aligns Victoria's strengths with opportunities in high growth countries in its recent 2016-17 state budget submission.

The strategy is a good example of how Victoria's sectoral strengths can be aligned with China's needs. The Victorian Government will support businesses to

become more internationally competitive and create new business opportunities.

However, to keep internationally engaged businesses competitive, there is a need to lower business taxes, reduce red tape and improve trade related infrastructure.

### Join the Chamber today and like us on Facebook!

The new website is another reason to join the Docklands Chamber of Commerce and connect your business to people with like minds who are actively encouraging the development of the Docklands community.

If you have anything you wish to share, or you want to join us simply email: [admin@docklandsc.com.au](mailto:admin@docklandsc.com.au) or visit our web site [www.docklandsc.com.au](http://www.docklandsc.com.au)



## OWNERS CORPORATION LAW

With Tom Bacon

Tom Bacon is the principal lawyer of Strata Title Lawyers.  
[Tom@stratatitlelawyers.com.au](mailto:Tom@stratatitlelawyers.com.au)

## Rules, rules and more rules

### ***An owner installs an air conditioner unit on the common property roof.***

A tenant stores their bicycle and some boxes of rags and domestic cleaning equipment in their car parking space. A tenant installs a barbecue and some garden furniture on the common property courtyard to create an enclosed space. An owner decides to place some potted plants near the entrance to the complex.

For each of these situations detailed above, an owners' corporation (OC) has to consider the issue from the point of view of managing and regulating the use of and access to the common property. The legislation requires the owners' corporation to control the common property and to ensure that common property is not misused.

Some OCs might turn a blind eye to these

situations, citing a desire to either avoid drama or conflict, or maybe even due to apathy or tacit and silent approval.

But consider for a moment the implications of that air conditioner unit failing due to lack of maintenance over a period of years, catching fire one warm evening and engulfing the common property roof in flames. Assuming everyone in the complex escaped unharmed, would an insurer void coverage under its policy of insurance on the grounds the air conditioner unit was an unapproved installation?

The owner who installed the air conditioner unit might be required under the common law to compensate the OC. But if the damage to the roof is extensive, and if the owner concerned is not particularly wealthy, then the liability to cop the cost of the repairs falls back to the members of the OC.

Ditto the situation in the car parking space. If a car catches fire in the basement, would the presence of the rags and toxic cleaning

equipment exacerbate and accelerate the spread of fire? How would liability be apportioned in this case?

What about the tenant who took over common property to create their own private outdoor space? Does the OC have the power to remove the furniture if the tenant ignores requests to remove it? If they did, where would they store it? What if the furniture got damaged during the time it was in storage?

All of these situations have occurred in Australia, and each time, the particular OC has found they didn't have the powers under their existing rules to properly cater for the situation. The majority of OCs consider that the rules put in place for their scheme (either the model rules under the legislation, or the original rules put in place by the developer) are the start and end point for compliance.

However, the model rules and the "developer" rules are usually very basic, generic and are not tailored to the individual characteristics of the different types and

layouts of buildings that we live in.

I recommend that every three years, the committee should review the rules, and consider whether new situations have arisen that necessitate the passing of new additional rules.

The current legislation empowers OCs to make the types of rules it wants, subject to the legal doctrines of ultra vires, unreasonableness, inconsistency and of course, discrimination.

As always, a special resolution would be required to change or introduce new rules. However the cost of not taking these steps would far outweigh the costs of convening a ballot or special general meeting.

In my view, OCs should take a proactive view towards regulation of their communities. After all, and to quote one of the other columnists – we live here.



Victorian Accommodation Industry Association

**Join VicAIA today!** [vicaia.com.au](http://vicaia.com.au)

Promote the 'Code of Conduct' for short term accommodation



We Live Here

The We Live Here movement continues to gain support and we thank you all for your feedback. Please continue to encourage your neighbours, friends and co-workers to sign up on our website and let us know the issues that are important to you.

**Petition**

By the time you read this, our petition should have been launched as it is currently in the very final stages. We have already had some amazing support and assistance in preparing it and we are excited to get all of our voices heard on a large scale. The petition will be in circulation for several weeks so ensure you're signed up through our website for the link.

**Consumer Affairs cop out**

In our last column we told you that Consumer Affairs Victoria had released an issues paper on the Owners Corporation Act 2006 and are seeking submissions by April 29. We strongly recommend that you take a look and tell them your opinions.

[www.consumer.vic.gov.au/resources-and-education/legislation/public-consultations-and-reviews/consumer-property-law-review/issues-paper-2-owners-corporations](http://www.consumer.vic.gov.au/resources-and-education/legislation/public-consultations-and-reviews/consumer-property-law-review/issues-paper-2-owners-corporations)

We are still working on our submission, which will be placed on our website and available for you to download, review, amend or resubmit yourselves.

Sadly we feel that Consumer Affairs is turning a blind eye to the real issues faced by

inner city residential communities and are missing the perfect opportunity to fix these issues.

Under Section 8 Consumer Affairs clearly supports owners' corporations making enforceable and fair rules yet notes that making rules about use of a lot is beyond its scope and refer back to local planning schemes.

Consumer Affairs also notes that lot owners should be responsible for compliance with OC rules, with ignorance no defence, yet it then claims that short stay accommodation is also beyond its scope.

It refers to the "independent panel" on short-stays report that was submitted to the Minister for Consumer Affairs, Gaming and Liquor Regulation and the Minister for Planning, more than 12 months ago.

We are still awaiting a response. It appears the "independent panel" couldn't agree on a solution to protect residential communities, which is perhaps not surprising as the panel included the short-stay operator who is involved in the legal test cases. Hardly "independent" in our opinion!

If Consumer Affairs is copping out of properly empowering owners' corporations

to make rules and regulate short-stay accommodation, how is it representing or supporting the residential communities that its Acts are meant to be protecting?

**Upcoming forum**

On Monday, May 9 we will be holding our first "event" since the launch of the We Live Here movement last December.

As this is an election year, we thought it would be timely to invite representatives from the City of Melbourne to discuss what the council is doing for residents. It is intended to be a fact-finding meeting rather than a political meeting and will take the form of a panel discussion with a moderator. Lord Mayor Robert Doyle has already agreed to attend.

There will be an opportunity for questions to be asked on the night but we're also inviting questions to be submitted beforehand. Check our website for contact details.

The forum will be held at Library at the Dock from 6pm to 8pm. Registrations from 5.30pm.

**Newsletter**

Listening to your feedback, we will now be providing a brief fortnightly newsletter to

keep you updated on what we've been doing. To receive the newsletter you need to register as a supporter on our website.

**Support the cause**

The We Live Here movement is a grassroots organisation evolving from trying to get our voices heard for the issues we face with inner city residential living.

Our time is gladly given supporting the causes you tell us are important to you, but we still face costs fighting the cause including marketing, external support staff, running functions, web design and upgrades.

If you are able, donations would be gratefully accepted. Please check our website for details and thank you for your consideration.

Please contact us at [campaign@welivehere.net](mailto:campaign@welivehere.net) if you have issues you would like to have addressed or we can publicise in this column.



[www.welivehere.net](http://www.welivehere.net)  
emails to [campaign@welivehere.net](mailto:campaign@welivehere.net)

**THE MOST EXCLUSIVE ESCORT AGENCY**

**Paramour**  
OF COLLINS STREET

- Dinner Companions
- Social Escorts
- Sensual Ladies

CITY CENTRE  
Melbourne's exclusive entertainment service. Highly recommended for our interstate and overseas visitors.

CBD - 5 MINUTES TO YOUR DOOR

9654 6011

有很有很美丽的小姐！  
请看网址。  
たくさんの美しい女性  
日本語を話します

See real pictures of our ladies at [paramour.com.au](http://paramour.com.au)

Call or book at [rsvp@paramour.com.au](mailto:rsvp@paramour.com.au)  
MELBOURNE CBD

PCA113E

**docklands DENTAL STUDIO**  
a different dental experience

**BOOK NOW ONLINE**  
[docklandsdentalstudio.com.au](http://docklandsdentalstudio.com.au)

Dental Practice ACCREDITED

**Zoom! Teeth Whitening**  
Now Available

**Services:**  
Check-ups (exam, scale and clean, X-Ray) children's dentistry; teeth whitening; Dental implants; root canal treatment; crown, bridge, veneer; dentures.

**Our Dentists:**  
.....  
**Dr. Pia Oparkcharoen** - MDS (Adelaide)  
**Dr. Christian Toll** - BDS (Adelaide)  
**Dr. Mary Dang** - DDS (Melbourne)

Mon-Fri 8:30-5pm (Thurs until 6pm) Sat: 9am-1pm  
57 Merchant St, Docklands (opposite Victoria Harbour Medical Centre)  
[www.docklandsdentalstudio.com.au](http://www.docklandsdentalstudio.com.au) - ph 9021 9487 mob 0488 799 487

**Your CLEANING experts!**  
APARTMENTS / OFFICES / CARPETS / WINDOWS  
DRY CLEANING / PARCEL PICK UP & DELIVERY

P: 9646 7996  
86 Lorimer St, Docklands  
[info@concierge86.com.au](mailto:info@concierge86.com.au)  
[www.concierge86.com.au](http://www.concierge86.com.au)

**CONCIERGE**



# DOCKLANDS FASHION



## Fashion on the streets of Docklands

### Sami Sommariva, 24

Artist

**LOCATION:** Harbour Town Shopping Centre

**DESCRIBE WHAT YOU ARE**

**WEARING:** Nonchalant realness.

**WHAT IS YOUR FAVOURITE PIECE OF CLOTHING:** The boots I live in.

**WHAT BRINGS YOU TO THE DOCKLANDS:** Health and beauty appointments.

**HOW WOULD YOU DESCRIBE YOUR STYLE:** Glamorous tomb-raider.

**WHAT MAKES A GOOD OUTFIT:** Flattering clothing and the confidence to wear it.

### Rob Van Der Linden, 25

Sales assistant

**LOCATION:** Harbour Town Shopping Centre

**DESCRIBE WHAT YOU ARE**

**WEARING:** Dejour jeans from Brunswick, the vest is Adidas, and the sneakers are New Balance.

**WHAT IS YOUR FAVOURITE PIECE OF CLOTHING:** My sneaker collection.

**WHAT BRINGS YOU TO THE DOCKLANDS:** I work here.

**HOW WOULD YOU DESCRIBE YOUR STYLE:** Inner city casual.

**WHAT MAKES A GOOD OUTFIT:** Comfy and confident.

### Pepper-Anne Thorsby, 19

Student

**LOCATION:** Harbour Town Shopping Centre

**DESCRIBE WHAT YOU ARE**

**WEARING:** Casual and warm outfit.

**WHAT IS YOUR FAVOURITE PIECE OF CLOTHING:** Shoes.

**WHAT BRINGS YOU TO THE DOCKLANDS:** Shopping and I am on holiday.

**HOW WOULD YOU DESCRIBE YOUR STYLE:** Smart casual.

**WHAT MAKES A GOOD OUTFIT:** The right colour combination.

## Last chance for local businesses

**Nominations for the annual Lord Mayor's Commendations close this month**

Eligible local small businesses are invited to apply for this year's commendations before nominations close on Friday, May 20.

The annual awards, which started in 2005, recognise the commitment of long-term independent small and multi-generational businesses.

Business owners are eligible to apply for a bronze commendation after 10 or more years of operation in the municipality, a silver commendation after 25 or more years of operation, a gold commendation after 40 or more years and a platinum commendation after 50 or more years.

Families that have operated the same business in Melbourne for more than three generations are eligible for the Generational Family Business Commendation.

According to Lord Mayor Robert Doyle, small operators make up 80 per cent of all businesses in the City of Melbourne.


"Small businesses are the backbone of our healthy economy, they add character, colour and vibrancy to our streets, are a significant source of employment and enhance our reputation as the world's most liveable city," Cr Doyle said.

"Applications for this year's commendations are now open and I encourage operators and their customers to nominate and be part of this uniquely Melbourne tradition."

Since 2005 the commendations have recognised more than 500 small business owners, 18 family businesses and 20 recipients who had been in business in Melbourne for more than 50 years.

Applications are open until Friday, May 20 and the ceremony will be held on September 7.

For more information on the Lord Mayor's Commendations and how to nominate visit [www.melbourne.vic.gov.au/commendations](http://www.melbourne.vic.gov.au/commendations) or call 9658 9658.



**NEWQUAY DENTAL COSMETICS**  
General & Cosmetic Dentistry

**Your Smile is Your Logo**

Dr. Joseph Moussa is a member of the Australian Dental Association, the International Team for implantology and the Ossio integration Society. Having over twenty years of experience in general dentistry, with a special interest in cosmetic dentistry.

We are equipped with the latest technology available in dentistry today, NewQuay Dental Cosmetics provides unhurried personal dental treatments. We offer chair-side whitening, ceramic veneers, dental implants and more.

To make an appointment call  
Tel: (03) 9602 5587  
Emergency: 0412 777 612  
[www.nqdentalscosmetics.com.au](http://www.nqdentalscosmetics.com.au)



**Docklands Directory .com.au**

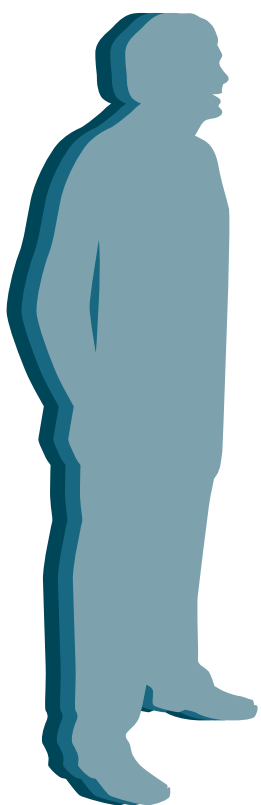
|                          |                    |                    |
|--------------------------|--------------------|--------------------|
| What to do               | Where to stay      | Where to Eat/Drink |
| Beauty, Health & Fitness | Docklands Services | Where to Shop      |



Melanie Lindayen with her boat Kintail the Boomerang in Docklands.

# A boat named Boomerang

*For Melanie Lindayen living on a boat in Docklands lends itself perfectly to her "itinerant" lifestyle.*



**DOCKLANDER**

Profile by  
Bethany Williams

Originally from a small town in Ontario, Canada, Melanie moved to Australia two years ago after she was named a Rotary Peace Fellow.

"The Rotary Peace Fellowship is a program for emerging leaders in peace building," Melanie explained.

"Folks who have already been working in one facet or another of peace building and collaborative development."

"That can be a range of different things like humanitarian international development or disaster response, journalism, diplomacy, medicine. For me it was always international development with a focus on health and education."

Having completed development fieldwork around the world including Africa, South America, Istanbul and South East Asia, amongst others, Melanie was no stranger to living overseas.

With six peace centres around the world,

Melanie decided to undertake her fellowship at the University of Queensland in Brisbane.

And that's where the boat, Kintail the Boomerang, comes into the story. Melanie and her partner John bought the Adams 31 yacht in Queensland, living onboard while Melanie completed her fellowship in Brisbane.

"It was a long-time dream of my partner and myself. He's been a sailor all of his life and I'm a water spirit as well," Melanie said. "I used to be a canoe guide and lifeguard back in Canada but sailing is a whole other scale for me."

When she secured a job at World Vision in Melbourne last October they sailed the boat down to Melbourne with the help of a skipper and have been living in Victoria Harbour ever since.

"It appeals to us because it allows us to be itinerant," Melanie said. "We have the freedom of movement and we can live off the grid with our solar power."

The pair spend most weekends sailing and Melanie said Docklands' convenient location made it easy to head out to the bay.

The next plan is to journey north and eventually sail the boat to Asia where Melanie intends to focus her development work. "We're slowly working up to larger passages," Melanie said.

"It's been great living in Docklands," Melanie said. "It feels like a very new community but I love the history of the sheds and I've learned about the rave sub-culture. It's fascinating."

"The Docklands Rotary Club has been very supportive of us and it's just so convenient to be close to transportation."

Melanie said, while the Brisbane boating community was much larger than in Melbourne, she had enjoyed getting to know the other boat owners in Docklands.

"Especially at New Year's, it was kind of like a floating trailer park," Melanie laughed.

**FLEMINGTON VETERINARY HOSPITAL**

**FULL VETERINARY SERVICES PLUS**

- Dental
- Weight Loss Clinic
- Puppy Pre School
- Hydrobath
- Ultrasound
- Endoscopy
- Boarding
- Kitty Kinder
- House calls
- Grooming



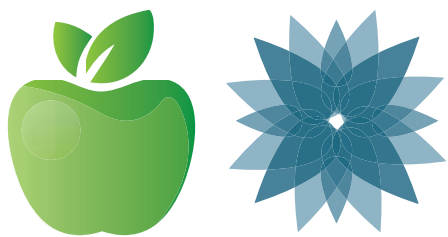
ALL HOURS **9376 5299** OPEN 7 DAYS

visit us at [www.flemingtonvet.com.au](http://www.flemingtonvet.com.au)

187 Mount Alexander Rd (Cnr Kent St) Ascot Vale  
(Ample off Street Parking)

**Dr. Anne Dynon**





# HEALTH & WELLBEING



*By Andrew Ward*  
YMCA Docklands manager

## Workout productivity

If you are a corporate worker of any kind, you would be well aware of the term productivity!

You are probably managing productivity, having your productivity monitored or a combination of both. In the work setting, we think about productivity as a measure of inputs and outputs, with some consideration of time. A highly productive model might produce great results, with a minimum of input in the least time possible.

You might have your own definition, but the purpose of this short article is to get you to start thinking about your exercise routines in terms of productivity. I'm not talking about intensity, although a high intensity can be a highly productive way to exercise.

The key to maximising workout productivity is clarity around objectives, from which a clear plan can be constructed. If you have the knowledge and experience, you may be able to manage this yourself. If not, this is where a coach or personal trainer can help facilitate highly productive exercise plans.

An exercise plan would include what to do, when to do it, and how it should be enhanced with your dietary intake, which for the most part must remain balanced. Without this clarity, you might not be getting the results you desire.

Most gym memberships include sessions for consultation. Many modern private health insurance plans include options for personal training. Even if you know a lot about health and fitness, don't hesitate to use all resources at your fingertips to maximise productivity in your workouts.

## Lower back pain, hip flexors and hamstrings

Chronic lower back pain is a common complaint and condition suffered by many adults in this day and age. What we notice in a fitness setting is that this condition is more serious and more frequent amongst the sedentary and inactive populations.

Corporate workers who spend long hours at their desks without regular exercise unfortunately also suffer this condition which can impact their quality of life outside of work.

Acute conditions aside, we frequently see a significant reduction in the severity of lower back pain with the introduction of hip mobility exercises, light weight training and stretching of the muscles in the general area. The two key muscle groups that are critical and whose condition impacts lower back health are the hip flexors and hamstrings.

In a seated position the hamstrings and hip flexors are in a shortened state. Over time, and without exercise and stretching, they become tight and this impacts the alignment of the pelvis. Tight hip flexors often result in anterior tilt of the pelvis which in turn places pressure on the lower back. To resolve this we need to stretch and strengthen the hamstrings and hip flexors, generally the whole body to help improve body alignment and wellbeing.

## Exercise must be for everybody

You don't have to be fit to exercise, but you have to exercise to be fit.

It's not all about fitness though. Regular exercise has so many other benefits like stress release, socialisation, mental health benefits, increasing bone density and prevention of lifestyle diseases like diabetes and obesity. For those reasons alone, we must do more to increase the participation and activity levels in our communities.

However, there are many legitimate barriers out there that hinder a large part of the population from starting and maintaining a regular exercise routine. Some barriers are real - like illness, injury, age, location, financial situation and disability, and may need more time and support to facilitate. They should not however be the determinants of whether people can participate in an exercise program or not.

Recently, and as seen in this issue of the Docklands News we provided access for a group of students living with autism to our facilities without charge as part of the Premier's Active April program. Our staff volunteered to develop and deliver an engaging, supervised workout for the group. Most of the students had never been into a gym before. The results were amazing on every level.

It's time the fitness, sport and recreation industry and its service providers do more to ensure there is access to the benefits of an active lifestyle to all parts of the community. This is an area that the YMCA leads the field, providing access and programs to people who otherwise would be excluded by social and physical barriers. The YMCA Open Doors approach to health and wellbeing for the communities they serve should be celebrated and be recognised as the industry benchmark.



## *There is nothing more precious than the tiniest glimpse of hope appearing on the horizon.*

It's like the first delicious rays of sunshine touching your body on a cold winter's day. You tingle in anticipation and your eyes close, fully submerging you in the moment. You allow your mind to wander and you visualise all that you have dreamt of and, just for a moment, you believe it could happen.

It has been just the tiniest turn in the road, just the smallest series of potential opportunities, the doors of which are yet to be opened, that has me feeling the hints of hope.

I'm wondering if, perhaps, the way things have all been unfolding has had it's reasons after all. It's not that I feel overtly optimistic and feel that all the stars have suddenly aligned and brought me great joy - but I'm just feeling that maybe they could. And right now, I'm delighted to sit in this moment, this

moment of "what if".

What if, everything you ever dreamt of came true? For a while, I have been feeling that I had lost hope. I had lost sight of my dreams. I had started to let go of things that I felt perhaps weren't going to happen.

Life has been so hectically busy. I have been so focused on getting through the essentials and I had, to be honest, started to wonder "what if this is as good as it gets?" (I hope you heard Jack Nicholson then, I certainly did!).

I had been struggling to find peace with accepting that maybe I wasn't meant to have the things which I had been holding so dearly in my heart, but I was trying to ...

It wasn't that I felt my life was "hopeless", just that my hope of achieving my biggest dreams, my most precious hopes for my life,

had faded.

I consoled myself telling myself I had simply become a "realist" and I wrapped myself in a barrage of goals that I could achieve and told myself it was all enough, that it was my life's purpose.

But a series of recent dreams and events - some would claim they're your inner voice showing you things you need to see, others would say they are the universe's way of guiding you, but irrespective to the force behind them - showed me that I shouldn't let go.

So I have held on. I have accepted they are my dreams and I have let things unfold as they will. And extraordinary things have been starting to happen.

Maybe, just maybe, they could come true.

What I have learnt in life, is that you do need patience. And what I have learnt in life, is that you most definitely need to hold onto your dreams.

What a woman wants is for all her dreams to come true. But what a woman needs is to have faith that what truly lies in your heart will keep hope alive. And that's a pretty wonderful feeling.

I hope you have a wonderful month and that your dreams come true.

With love,

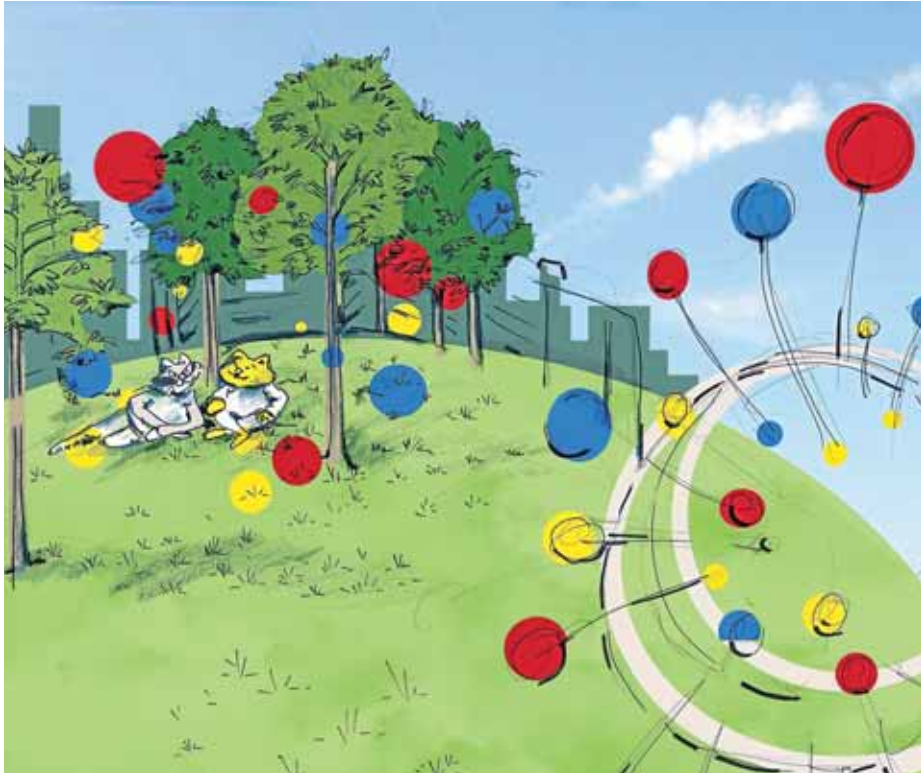
Abby

PS Don't forget you can reach me at [life@docklandsnews.com.au](mailto:life@docklandsnews.com.au) or find me on Facebook @abbyjanecrawford or Instagram.



# AWAY FROM THE DESK

with Susie Williamson



## The arrival - On being a Docklands newbie

"Oh, you poor thing."

"But, there's nothing there. Nothing."

"That's it. We're never going to see you again."

These were comments I received upon telling my old workmates that I was abandoning them for a new gig in Docklands (or "Dearthlands" as one of them dubbed it). Indeed, my knowledge of Docklands before I started working here last year was limited to Etihad Stadium (see last month's column) and the "will it or won't it" dramas surrounding the Melbourne Star (I'm pleased to say it did and my sprogs think it's pretty ace).

One of the concerns I had about accepting my new job was knowing I'd be leaving behind everything I loved about the CBD - good, cheap coffee (farewell Bowery to Williamsburg, how I loved thee), buying bagels in bulk for my beer-bagel-and-footy Friday-night ritual, and lunchtime retail therapy. Where would I quench my caffeine thirst? Have they heard of bagels in Docklands and do they even know what a real one is? Where's the nearest Gorman?

And what about the people? After eight years in an arts organisation, how would I cope surrounded by corporates who couldn't give a rats about the Oscars?

I've now racked up seven months as a Docklands worker and in that short space of time I've come to realise that "Dearthlands" is a big misnomer. After some trial and error I discovered that the coffee at Kenny's is not only cheap, but tastes good and is served with a beautiful smile (even at 7am) that warms even the grumpiest cat (ie me).

While I had to wait a few months to get my fix, I heralded the opening of Schmucks Bagels like it was sent by the bagel gods just for me (and their bagels are the real deal). And while there's no Gorman in Docklands, there is an Australia Post outlet with 24/7-accessible parcel lockers for online shopping deliveries.

And the people? Most Docklands workers are corporates (including me, now), but that doesn't mean they're not human. Okay, so my boss keeps confusing the Oscars with the Grammys, but it turns out that he is as obsessed with Survivor as I am. I've bonded with my other new colleagues over food, footy, books, sprogs, life. Seven months into the job and I've already made firm friendships I'll cherish forever.

One lunchtime I was heading back to work with one of these friends when I heard someone calling my name. Who would know me here other than a work colleague, and if it was someone from my office why would they be calling my name out on the street?

I gasped in unbridled joy when I discovered the voice came from a very old and dear friend I worked with at my first job almost 20 years ago. We'd stayed in touch on Facebook, but we hadn't spoken in years due to him moving back to Argentina and me being, well, a slacker. He, too, was a recent Docklands arrival, and I felt at that moment that I wasn't really a newbie anymore, that I could actually say I belonged.

As I walked back to work after the impromptu reunion, I realised that every fresh arrival, like me, will be followed by even newer arrivals, evoking the following passage from F. Scott Fitzgerald's *The Great Gatsby*: "It was lonely for a day or so until one morning some man, more recently arrived than I, stopped me on the road. 'How do you get to West Egg village?' he asked helplessly. I told him. And as I walked on I was lonely no longer. I was a guide, a pathfinder, an original settler. He had casually conferred on me the freedom of the neighbourhood."

The thing is, Docklands is a growing community. It doesn't have the history of the CBD, but look deep enough and you'll find it has heart. Even my old workmates are jealous.

# PET'S CORNER

## Jessica the gentle whippet

By Nicholas Li

*There's a reason so many people love whippets.*

Jessica is a model example of the whippet breed - gentle and calm. She strides around the docks with a minimum of fuss.

The three-year-old makes the most of the acres of space at NewQuay, darting from point to point, searching for something new to investigate.

Jessica is extremely fit. Her hobbies include going for runs, the occasional bike ride (at least, following the bike) and chasing the resident rabbit population of Docklands.

With elite pace at her disposal, you would not want to be one of those rabbits.

Owner, 22-year-old Darwin Fernandes (an apt name for an animal lover), moved to Melbourne three years ago. All smiles, you'd be hard struck to find a more friendly pair taking advantage of the unseasonably warm mid-April weather.

Darwin works as a blood collector at the Royal Melbourne Hospital. He would like to see more parks and green areas for Jessica to play in, despite the adequate space around NewQuay.



## Top Class

of Collins Street

 An advertisement for "Top Class of Collins Street". The background is a close-up photograph of a woman with long dark hair, wearing a multi-strand pearl necklace and red lipstick. She has her eyes closed and a serene expression. The text is overlaid on the image.
 

open 24/7 |  
sexy & wild |  
genuine escorts |

PCA113E

www.topclassofcollinsstreet.com.au

**Call 03 9654 6351**

# WHAT'S ON

## COMMUNITY CALENDAR

JAN | FEB | MAR | APR | **MAY** | JUN | JUL | AUG | SEP | OCT | NOV | DEC

**FOURTH THURSDAY OF THE MONTH**  
**6PM - 7PM**  
**LIBRARY AT THE DOCK**  
**DOCKLANDS HISTORY GROUP**  
 Share a cuppa and stories with other local history enthusiasts and learn about people, places and industries from times gone by.

**EVERY FRIDAY AND SUNDAY**  
**THE JAMES HOTEL**  
**LIVE MUSIC**  
 Live music at The James Hotel every Friday and Sunday night - free entry.  
 Every Friday (starting June 19): Shameless  
 Every Sunday: Stand and Deliver 80s tribute band, from 7.30pm

**EVERY FRIDAY, SATURDAY AND SUNDAY**  
**LE CIRQUE FINE FOODS**  
**SAM KRISTY ON PIANO**  
 With a repertoire of over 6000 songs, Sam Kristy plays jazz, pop, swing, musical theatre, rock, classical, dance, disco and world music.

**EVERY SUNDAY**  
**SUNDAY WORSHIP**  
 City Light Methodist Church at St Peter the Mariner's Chapel.  
 Mission to Seafarers, 717 Flinders St.  
 11am English service  
 5pm Chinese service 中文

**EVERY SUNDAY FROM 10AM UNTIL 5PM**  
**NEWQUAY PROMENADE**  
**DOCKLANDS SUNDAY MARKET**  
 A variety market featuring arts and crafts, books and more. More info, ring **0412 910 496**



**THURSDAY, MAY 12 - 1.10PM**  
**LIBRARY AT THE DOCK**  
**INVENTI ENSEMBLE: LUNCHTIME CLASSICS**  
 Flute and guitar. Inveni Ensemble is holding a series of free monthly lunchtime concerts at the library.



**TUESDAYS 6PM - 7PM**  
**GROOVE TRAIN**  
**HARBOUR TOWN SHOPPING CENTRE**  
**DOCKLANDS ROTARY**  
 All welcome.  
 Contact president Loryn Clark on **0418 390 334**



**2ND AND 4TH MONDAY OF THE MONTH AT 6.30 PM**  
**700 BOURKE ST - ROOM 3.101**  
**DOCKLANDS TOASTMASTERS**  
 Boost your public speaking and leadership skills.

**WEDNESDAY, MAY 11 - FROM 7PM**  
**MERCHANT SOCIETY,**  
**71 MERCHANT ST, DOCKLANDS**  
**DOCKLANDS SOCIAL CLUB**  
 Join other locals workers and residents for a monthly social gathering in a relaxed, informal setting. Come along for a drink or sit down for a meal. Everyone is welcome.

**WEDNESDAYS 5.45PM-7PM**  
**THE HUB, 80 HARBOUR ESPLANADE**  
**OPEN DOOR SINGERS DOCKLANDS**  
 Find your voice, experience the joy of singing in a choir and meet new friends.  
[www.opendoorsingers.org.au](http://www.opendoorsingers.org.au)

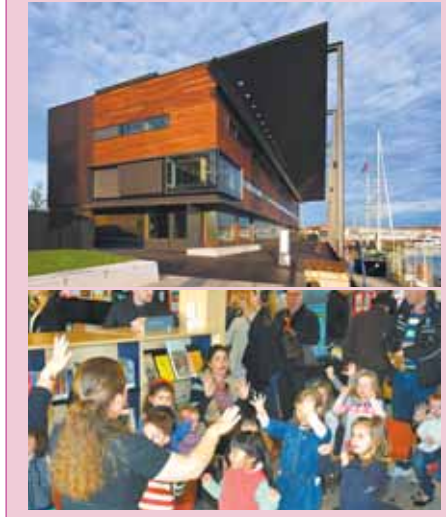
**MONDAYS 11AM**  
**THE HUB, 80 HARBOUR ESPLANADE**  
**CHILD-FRIENDLY YOGA CLASS**  
 Come transform your mind and body while your children play. \$7 per class (45 mins). Limited spots, bookings necessary. Contact Prachi Nirvana Yoga on 0422 577 268.

**LIBRARY AT THE DOCK**  
**MELBOURNE SUNRISE PROBUS CLUB**  
 Probus Clubs for men and women over 50. Meet new friends, share interests and enjoy activities. Contact membership officer Sue at [weddsuzanne@gmail.com](mailto:weddsuzanne@gmail.com)

**WEDNESDAYS 6.30PM TO 7.30PM**  
**THE LIBRARY AT THE DOCK**  
**ALCOHOLICS ANONYMOUS**  
 Docklands Daily Reflections group meets in meeting rooms two and three on level two.  
**VISIT AATIMES.ORG.AU FOR MORE INFORMATION.**

### LIBRARY AT THE DOCK - WEEKLY PROGRAMS

**WEDNESDAYS AT 5.30PM AND SATURDAYS AT 8.30AM**  
**SHED 2, NORTH WHARF RD**  
**DRAGON MASTERS DRAGON BOATING**  
 Dragon Masters has something for everyone. Contact Jeff Saunders on 0417 219 888 or [Jeff.saunders@digisurf.com.au](mailto:Jeff.saunders@digisurf.com.au)  
**WWW.DRAGONMASTERS.COM.AU**



**PRESCHOOL STORYTIME**  
 Fridays at 10.30am  
 Come and share the wonder of books with us. Enjoy 40-50 minutes of fun stories, songs, rhymes and activities with your three to five year olds.

**SONGBIRDS**  
 Wednesdays at 10.30am  
 Come along for songs, rhymes and stories to engage your budding book worm's mind and introduce them to the fun and rhythm of language. Suitable for babies and toddlers aged up to 18 months old.

**STOMPERS**  
 Mondays at 10.30am  
 Encourage your child to have a life-long love of books by coming along to Stompers, Melbourne Library Services weekly program for toddlers aged 18 months to three years.

**CREATIVE KIDS AFTER SCHOOL CLUB**  
 Wednesdays 4.30pm to 5.30 pm.  
 Ever wanted to 3D print your own superhero figurine? At the Creative Kids After School Club you can. Come hang out and create in our maker's space. Projects will include jewellery making, game design, paper crafts, comics and more.

# BUSINESS DIRECTORY

## ACCOMMODATION

**Docklands Executive Apartments**  
Your Home Away From Home

Check Availability and Book Directly Online  
[www.docklandsexecutiveapartments.com.au](http://www.docklandsexecutiveapartments.com.au)

#1 for last 4 yrs

MEMBER

## CHILD CARE

**OPENING SOON!**

**“Where your child comes first, everytime...”**

**Giraffe**  
Early Learning Centre  
DOCKLANDS

03 9670 0880 | [www.giraffedocklands.com.au](http://www.giraffedocklands.com.au)

## COMPUTERS

**DOCKCOM<sup>®</sup>**  
TECHNOLOGY SERVICES

Call: (03) 9008 7908

Level 2, 710 Collins St,  
Docklands 3008

[www.dockcom.com.au](http://www.dockcom.com.au)

## CLEANING

**Your cleaning experts!**

APARTMENTS / OFFICES  
CARPETS / WINDOWS

DRY CLEANING / PARCEL PICK UP & DELIVERY

P: 9646 7996  
86 Lorimer St, Docklands  
[www.concierge86.com.au](http://www.concierge86.com.au)

## DENTAL

**DOCKLANDS DENTAL STUDIO**  
A DIFFERENT DENTAL EXPERIENCE

**NOW OPEN SATURDAYS**

Mon-Fri 8:30-5pm  
(Tue, Thu until 6pm)  
Sat: 8:30-1pm

57 Merchant St, Docklands  
T (03) 9021 9487 | mob 0488 799 487  
(opposite Victoria Harbour Medical Centre)  
[www.docklandsdentalstudio.com.au](http://www.docklandsdentalstudio.com.au)

**NEWQUAY DENTAL COSMETICS**  
General & Cosmetic Dentistry

Dr Joseph Moussa a member of the Australian Dental Association provides:

- Teeth Whitening • General & Cosmetic Dentistry
- Dental Implants • Inlays, Onlays, Crowns & more

We are equipped with the latest technology available in dentistry today.

For an appointment please call: 9602 5587  
Emergency: 0412 777 612  
Web: [www.nqdentalscosmetics.com.au](http://www.nqdentalscosmetics.com.au)

**DENTAL SURGEON**  
**Dr. Sharon Chui** B.D.Sc.M.DENT  
牙科诊所

12 Collins St Suite 46 Level 4 Melbourne  
Hours - Mon-Fri: 8:30am-5:30pm  
After hours & weekend consultations by appointment  
Speaking 英语-国语-粤语

Phone 9654 6181  
Mob: 0456 888 009 All Hours

## ELECTRICIAN

**LC Electrical Services Pty Ltd**

Louis Cassar ☎ 0413 649 805  
A Class Electrician (Director) ✉ info@lcelectricalservices.com.au  
www.lcelectricalservices.com.au

## FITNESS

**KX Pilates Docklands**

6/16 Walkview Walk  
Docklands 3008  
docklands@kx.com.au  
(03) 9972 2179

[www.kxpilates.com.au](http://www.kxpilates.com.au)

## HANDYMAN

**CLEVER DICK THE HANDYMAN**

NO JOB TOO BIG OR TOO SMALL

[www.cleverdickthehandyman.com.au](http://www.cleverdickthehandyman.com.au)  
Mobile: 0448 896 578

## HEALTH & BEAUTY

[www.victoriaharbourmedicalcentre.com.au](http://www.victoriaharbourmedicalcentre.com.au)

**VICTORIA HARBOUR MEDICAL CENTRE**

**Victoria Harbour Medical Centre** Telephone 9629 1414  
2-3/850 Collins Street Docklands 3008 After Hours 9429 5677  
Entry via Merchant St Fax 9629 4265  
Hours: Mon-Fri 8am-6pm, Sat 9am-12 noon

## HOLIDAY ACCOMMODATION

**Adina Lodge: Bright**

Suffering from the stress of the city?  
Escape to the country for a peaceful weekend of rest and relaxation

[www.adinalodge.com.au](http://www.adinalodge.com.au)  
Your Host - Jan Gielnik 0417 011 086

**Promacom**

Get away to Wilson's Promontory

**Book your escape** Tel (03) 5682 1436  
Mob 0429 822 290  
[www.promacom.com.au](http://www.promacom.com.au)  
info@promacom.com.au

## LAWYERS

**Tolhurst Druce + Emmerson**  
Lawyers

Call today for advice on:

- Wills, probate, estates and trusts
- Conveyancing and property law
- Family law
- Commercial law
- Litigation and dispute resolution

Lvl 3, 520 Bourke St 9670 0700 [www.tde.com.au](http://www.tde.com.au)

## MARKETING & COMMUNICATIONS

Happy customers. More sales.

**SIMPLE CUSTOMER MANAGEMENT** 1300 780 276

[www.simplecustomermanagement.com.au](http://www.simplecustomermanagement.com.au)

## PHARMACY

**victoria harbour pharmacy+news**

Hours: Mon to Fri 8am-8pm & Sat 9am-1pm  
☒ Pharmacy ☒ Giftware  
☒ Magazines & Papers ☒ Tatstlotto  
☒ Same day dry cleaning

66 Merchant St, Docklands (opposite Safeway)  
Ph: 03 9629 9922 Fax: 03 9629 9933  
Email: vicharbourpharmacy@nunet.com.au

## southern cross pharmacy

Hours: Monday to Friday 7am-8pm  
Saturday 10am-6pm  
Southern Cross Station  
Shop C8, 99 Spencer St, Docklands  
Ph: 03 9600 0294 ☒ Fax: 03 9600 0594  
Email: southerncrosspharmacy@nunet.com.au

## PLUMBING

Servicing all of Melbourne.

Plumbing work for Body Corporates Facility Managers & Apartment Owners.

**Plumbing Laser**  
Laser Plumbing Croydton  
Lic. No. RPC: 22664

Call Brendan Redfern: 0419 350 278  
[b.redfern@laserplumbing.com.au](mailto:b.redfern@laserplumbing.com.au)

**K.J. Woolley**  
MASTER PLUMBERS

**YOUR LOCAL DOCKLANDS PLUMBER AND GASFITTER**

No service charge in postcode 3008\*

Call 9600 3019 Mob 0432 380 886  
[woolleysplumbing.com.au](http://woolleysplumbing.com.au) 24/7

\*Min charge 1 hour labour. During normal working hours

## REAL ESTATE

**BarryPlant**

Your Preferred Sales & Leasing Agents in Docklands

Docklands | 818 Bourke Street  
(03) 9936 9999

[barryplant.com.au/docklands](http://barryplant.com.au/docklands)

Rely on our red carpet experience

**CityResidential**  
REAL ESTATE PTY LTD

T: 03 9001 1333  
818 Bourke Street,  
Docklands  
VIC 3008

**SALES** Glenn Donnelly m: 0419 998 235  
**LEASING** Lina D'Ambrosio m: 0430 959 851

[www.cityresidentialbourkestreet.com.au](http://www.cityresidentialbourkestreet.com.au)  
**SELLING | LEASING | PROPERTY MANAGEMENT**

## LUCAS

lucas real estate | vertical living specialist  
newquay | 1/401 docklands drive docklands vic 3008  
yarras edge | 62 river esplanade docklands vic 3008  
03 9091 1400 | [lucasre.com.au](http://lucasre.com.au)

## NELSON ALEXANDER

2015 REIA Best Large Residential Agency In Australia

**Now in Docklands**

846 Bourke Street, Docklands | 9251 9000  
People minded, Property Driven

## SCHOOLS

[www.haileybury.vic.edu.au](http://www.haileybury.vic.edu.au)

**HAILEYBURY**  
KESBOROUGH BRIGHTON BERWICK CITY BEEING

## VETERINARY

**FLEMINGTON VETERINARY HOSPITAL**

**FULL VETERINARY SERVICES**

- Dental • Kitty Kinder
- Grooming • House Calls
- Hydrobath • Weight Loss Clinic
- Endoscopy • Ultrasound
- Boarding • Puppy Pre School

Web: [www.flemingtonvet.com.au](http://www.flemingtonvet.com.au)

## Port Melbourne Veterinary Clinic & Hospital

**FRIENDLY PROFESSIONAL PET HEALTH CARE**

Open 7 days a week  
Mon-Fri 8am-7pm  
Sat-Sun 9am-5pm

For advice & appointments Ph: 9646 5300  
[www.portmelbournevet.com.au](http://www.portmelbournevet.com.au)  
109 Bay St, Port Melbourne

## DOCKLANDS NEWS

If you are not on this list then email  
[advertising@docklandsnews.com.au](mailto:advertising@docklandsnews.com.au) or phone 8689 7979  
to discuss how you can get on this list for FREE!!

# DOCKLANDS NEWS

Docklands News appreciates your feedback. Tell us what you like and what you don't like. What would you like to read more of? Less of? Send your emails to [news@docklandsnews.com.au](mailto:news@docklandsnews.com.au)

## Local wharves to live on through Alma

*If you've spent any time at all in Docklands then you've probably heard of the Alma Doepel.*

The historic tall-ship is currently being restored by a committed team of volunteers at Shed 2 on North Wharf Rd.

But did you know that some of the timber being used to restore the ship was sourced from Docklands' own wharves?

According to restoration director Peter Harris, the Alma has received donations of timber following demolition works to various wharves around Docklands.

Most recently it received a donation of timber from the "Australian Wharf" site located on the southern side of North Wharf Rd.

"The Australian Wharf was built, as far as I can gather, in 1918, and Alma first worked up and down the river here in 1916," Mr Harris said.

"The wharf wasn't built until two years after Alma began working here so there's a certain irony I suppose that the wharf's been knocked down but the ship's still going."

The Alma also received a pack of timber following the demolition of the wharves west of New Quay, adjacent to where Ron Barassi Snr Park now sits. Interestingly, when Mr Harris first began working on the ship in 1984 the Alma was based at the sheds that

used to sit upon those wharves.

According to Mr Harris, despite being around 100-years-old, much of the timber is still in good condition.

"It's got good bits and bad bits, we have to cut around some parts and there are a lot of bolts and nails and rusty bits we need to remove," Mr Harris explained.

The donation of timber from Docklands' wharves means the restoration team can replace deteriorated timber with material of a similar age and species.

"The way we're refitting Alma is not to make a classic yacht out of her," Mr Harris said. "She's a working vessel, more than one hundred years old and she was a training ship. The trainees and the public who sail on her will see, if not the original pieces of timber, something similar, which will have had a similar sort of colourful history."

Places Victoria general manager Simon Wilson said the organisation had gifted around 12 six-metre lengths of reclaimed timber to be used in the restoration of the Alma Doepel.

"The timber was reclaimed during the removal of the wharf on the southern side of Collins Wharf last year," Mr Wilson said.



Alma Doepel restoration director with one of the donated pieces of timber from Docklands' wharves.



## WELCOME CHANGE

Here at Lucas, we've been as Docklands' premier vertical living specialists for over 12 years. To reflect our long-term vision for the future and our continued commitment to innovation, we've decided on a little makeover. Some things, however, will never change. Our award winning team offer a wealth of local knowledge and are as motivated, passionate and dedicated to superior service as ever. With the strength of our new look behind us, anything is possible.

9091 1400 | [lucasre.com.au](http://lucasre.com.au)

# LUCAS