

DOCKLANDS NEWS

docklandsnews.com.au

Forever Free

Puzzles & Trivia P22



Espacio Salvaje: More than just a retail space
Photo by Ajay Viswanath

Saint Mangos Lane is now home to collaborative retail store Espacio Salvaje, which has been spicing up the laneway with unique, Latin-inspired, ethical fashion garments since late last year. The store is now preparing for a runway event on February 19, and locals are invited! *Full story on page 16.*

“We’ll be back”: ATET vows to return after fire rips through nightclub

The floating venue said news of the blaze had “hit us hard” but promised to return after damage on their barge did not spread throughout.

WORDS BY *David Schout*
SAFETY & SECURITY

A blaze has ripped through floating Docklands nightclub ATET, causing damage to the venue in a stunning latest development to the controversial three-month-old night spot.

Seven Fire Rescue Victoria vehicles responded to calls at around 4.30am on the morning of Tuesday, January 31 to find the club, which operates on a commercial barge, on fire.

They worked quickly to extinguish the flames with the situation declared under control within six minutes, and no-one was on the boat at the time. Multiple calls were made to Triple Zero at the time, including by motorists on the Bolte Bridge.

Witness Ellie told *Docklands News* she could hear little commotion on North Wharf aside from fire sirens.

“When I heard the sirens, I thought it was our building on fire then I followed the fire trucks from the window which ended up at ATET,” the No.1 Collins Wharf resident said.

“I was quite shocked to see that. I didn’t hear any screaming or yelling. Even after they put out the fire, I could see the fireman’s torch lighting up the smoke. Eventually, after one hour it was quiet again.”

In a statement posted to social media alongside a photo of damaged sections of the venue, ATET said that they were “beyond relieved” that the fire took place without anyone inside the venue and that all staff were safe.

“This morning we woke up to the devastating news that our beautiful barge caught fire,” ATET said.

“Our whole team has put their heart and soul into this venture so this has hit us hard ... it will take us some time to regroup but the good news is the fire and damage was localised and it’s nothing that can’t be fixed.”

ATET extended their “deepest gratitude” to those who called in the fire, and said they were “forever indebted” to emergency services who they said contained and saved their venue, which is insured.

While there was significant damage to furniture and roof covers, ATET staff believed the damage could have been far worse.

The venue had CCTV cameras operating on the site, which the police used immediately as part of their investigation, while there are other Development Victoria (DV) and City of Melbourne-operated cameras throughout the precinct.

ATET vowed to return, in time. “We are still processing what happened here and would appreciate your understanding in this confusing time ... rest assured, we’re not done, and we’ll be back soon!”

Within hours of the incident, arson detectives were at the scene to determine whether the blaze was deliberately lit.

Speculation online immediately turned to whether a disgruntled local

Continued on page 4.

Goods Shed saved after two-tower proposal is refused

WORDS BY *Brendan Rees*
PLANNING

The historic Goods Shed in Docklands has been saved from the wrecking ball after Heritage Victoria knocked back a controversial two-tower development proposal.

The 1889-90 built No.2 Goods Shed on Bourke St is listed on the Victorian Heritage Register as one of the oldest surviving railway goods buildings in Victoria.

The development proposal would have included demolition, as well as dismantling and partial reconstruction to allow for the construction of two towers on either side of Collins St. Conservation and reconstruction works were also proposed.

However, Heritage Victoria rejected the application on January 5, stating it would have caused “substantial visual and physical harm to the cultural heritage significance of the place”.

“It would permanently, irreversibly and further diminish the understanding of the place as Victoria’s longest and most substantial goods shed,” Heritage Victoria found.

“The scale and bulk of the proposed new towers would overwhelm and dominate the No.2 Goods Shed and obscure views to the north and south sections from Collins St.”

“The reasons provided to justify demolition of these elements are not based on a sound heritage approach, but on the commercial development of the place.”

The Royal Historical Society of Victoria and the National Trust also opposed the application, which is believed to have been lodged by Walker Corporation, the company behind Collins Square.

“We applaud Heritage Victoria’s decision to refuse the application to demolish more of the No. 2 Goods shed and erect two massive towers that would have overhung a

Continued on page 7.

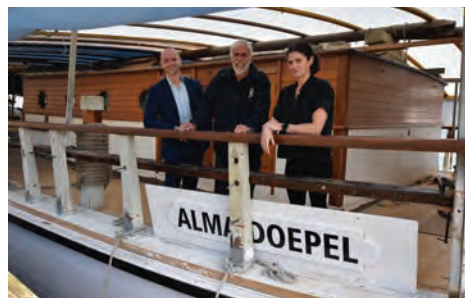
BUSINESS, PAGE 03

A Shane Wylie resigns from the Chamber



MARITIME, PAGE 05

B Central Pier timber donated to Alma



EVENTS, PAGE 08

C Run for the Kids returns to Docklands



ENVIRONMENT, PAGE 11

D Floating wetlands a boost to Yarra River



SUPPORTING THE LOCAL COMMUNITY BY SUPPORTING THEIR LOCAL DOCKLANDS NEWS

MARKET LANE
The District Docklands

CONTACT

Suite 208, 198 Harbour Esplanade
 docklandsnews.com.au
 Tel: 8689 7980

EDITOR

Sean Car

PUBLISHER

Hyperlocal News Pty Ltd
 ABN: 57 623 558 725

ADVERTISING

Hyper-local print works for advertisers in our digital world because local people are interested in local news.

To sell to the Docklands community, contact Jack Hayes on 0401 031 236 or jack@hyperlocalnews.com.au

Reader contributions are welcome.

Send letters, articles and images to: admin@hyperlocalnews.com.au

The deadline for the March edition is February 23.

SOCIAL MEDIA

Follow us on Twitter
 @Docklands_News

Like us on Facebook
 Docklands News

Follow us on Instagram
 @docklands_news

Opinions expressed by contributors are not necessarily shared by the publisher.

hyperlocalnews.com.au
 admin@hyperlocalnews.com.au



Development Victoria “very happy” with tepid response to Central Pier consultation

It may still be early days in the journey towards reshaping Central Pier, but the results from Development Victoria’s recent public engagement process don’t inspire great confidence for exciting days ahead.

WORDS BY *Sean Car*
 PLANNING

Make no mistake – the future of Central Pier and the adjacent waterfront along Harbour Esplanade represents the key to helping unlock a successful future for Docklands. Get it wrong, and the consequences are seismic.

Here lies a once-in-a-generation opportunity to create something truly remarkable not just for Docklands, but for both Melbourne and the state of Victoria – a chance to rewrite many of the past planning failures that have plagued our waterfront precinct.

And, given the flow-on effects of the pier’s closure in 2019, paired with the battering ram that was the COVID pandemic, the process for drawing on the wisdom of the community to inform Central Pier’s future vision should be treated with due respect.

Following years of radio silence, the pier’s custodian – Development Victoria (DV) – quietly initiated a public engagement process in late October last year via the “Engage Victoria” website.

Separate to the announcement on DV’s website on October 21, supported by a push in the final two editions of *Docklands News* in 2022,

the process ran for nearly 10 weeks until late December with very little promotion seen or heard elsewhere.

The centrepiece of this process was an online survey, a large part of which was made up of broad questions relating to different “vision statements”, met with corresponding multiple-choice answers.

While the second half of the survey provided space for participants to express themselves more openly, many of the questions were largely built off these preconceived vision statements.

And the response? DV told *Docklands News* that “around 250 people participated in the online survey”, results of which its acting group head of precincts Ronan Mellan said it had “been very happy with”.

“We’ve been very happy with the response to the first stage of our public consultation process. This will inform our planning for the future revitalisation of Central Pier and the adjacent waterfront areas,” Mr Mellan said.

“We will share a Place Principles and Vision Strategy in 2023 as part of our ongoing commitment to actively work with the community, anyone who has an interest in the project and our key partners throughout the process.”

Two-hundred-and-fifty people might symbolise a reasonable sample size for informing next steps. But for a three-month exercise on a piece of public infrastructure that represents hundreds of millions of dollars in lost earnings and thousands of jobs for the city’s economy, it seems an underwhelming figure.

Little about the process to date has been what one would consider deliberative – DV’s community workshop scheduled for December 6 last year was abandoned due to low interest, while the online webinar reportedly attracted “around 40 people”.

Still, DV said it was important to highlight that it was “at the start of the journey” and “no decisions have been made at this early stage”. It stressed that there would be further

opportunities for the community to engage, but what those are, we still don’t yet know.

Community feedback will be captured in an “Engagement Summary Report” that will be made publicly available in coming months – this will be used to develop a “Place Principles and Vision Strategy”, which is expected to be released mid-year.

While there’s still more to come, the community will be understandably anxious about something they’ve seen play out all too often before in Docklands – more lip service, more reports and more paralysis.

But the opportunity to bring this iconic maritime asset back to life in a way that unites all Docklanders and draws Melburnians and visitors to our waterfront for the all the right reasons, should only provide scope for optimism.

In the words of long-time Docklands resident and *Docklands News* cartoonist Michael Lindell, Central Pier’s future must be one built on ideas, driven by thinking, and not more “dodgy words” ...

“Central Pier presents Melbourne with a very dangerous and rare opportunity.”

“In the first millennium we were understandably preoccupied with moving goods.”

“In the second millennium we developed a chaotic obsession with moving people.”

“In the third millennium, now, we are struggling with our desperate need to move ideas.”

Central Pier must address this imperative, lest we drift from relevance. Central Pier should be a 24-hour ‘Ideas Exchange’.”

“This heart of Melbourne must be driven by thinking, not more appetites.”

Mikko

Meanwhile, a procurement process is under way to appoint a contractor to carry out the pier’s demolition works, which is “anticipated to begin in 2023”. ●

LUCAS IS NOMINATED FOR 9 PRESTIGIOUS INDUSTRY AWARDS!

The finalists for the 17th Annual Australasian Real Estate Results Awards (ARERA’s) have just been announced and Lucas is proud to be nominated for 9 prestigious industry awards recognising service, results, and outcomes for our clients!

Agency Award Nominations:

- Boutique Agency of the Year
- Property Management Agency of the Year
- Digital Excellence Agency of the Year

Individual Team Member Award Nominations:

- Agent Achiever of the Year – Lynn Lum
- Performer of the Year – Sales – Thomas Tregonning
- Growth Agent of the Year – Serena Su
- Property Manager of the Year – Ashley Oliver
- BDM of the Year – Eva Christodoulou
- Client Services Manager of the Year – Laura Gilchrist

Thinking about selling? Let us show you the Lucas difference.

LUCAS



9091 1400 | lucasre.com.au



Community event announces winner of photo competition

The winning photograph from “Celebrate at Yarra’s Edge: The Docklands Connection” community event last November has been announced.

COMMUNITY

Taking home the grand prize of a limited edition Gillie and Marc bronze sculpture is Docklander Charlotte Turner, for her photo entitled *Sisters*.

The winning snap captures the excitement of Charlotte’s “two little ladies” as they approached the Docklands community day event.

Expressing her excitement over winning the sculpture,

which is of a mother chimpanzee sweetly embracing her child, Charlotte said they “could not believe [they] were lucky enough to win the beautiful *Chimp Love* sculpture”.

“The girls have loved the sculptures along the river since the day they arrived,” Charlotte said.

“It has since been named Charlie [the mother] and Lola [the baby], from the girls’ favourite picture book. I want to give a huge thanks to Jenny and the Celebrate at Yarra’s Edge team, Mirvac, and Gillie and Marc for our amazing prize.” ●

Shane Wylie resigns from the Docklands Chamber of Commerce

WORDS BY *Sean Car*
BUSINESS

The year has begun with the unfortunate news that Docklands resident and long-serving executive officer of the Docklands Chamber of Commerce (DCC) has resigned from his post after seven years in the role.

In sharing his decision with *Docklands News*, Mr Wylie, who has been instrumental in supporting the local business community for many years, said while saddened to be leaving the chamber, “it was time to move on”.

“After seven years as executive officer of the Docklands Chamber of Commerce it is time to move on. While it saddens me greatly, I am very aware that Docklands needs a fresh vision,” he said. “I’ll continue to advocate for my beloved home but in other ways from now.”

Mr Wylie, who was behind many successful initiatives during his time serving as executive officer, including the recent Docklands Dollars

campaigns, leaves big shoes for the Chamber’s executive committee to fill.

DCC president Daniel Hibberd said it was sad to see Mr Wylie go and thanked him for his seven years of “passionate service” to Docklands.

“The DCC says a sad farewell executive officer Shane Wylie – a long-term Docklands resident who has provided the DCC with seven years of passionate service. He will be sorely missed,” Mr Hibberd said.

“Shane has been instrumental in driving unprecedented local business collaboration through recent Docklands Dollars programs, he has aided the chamber to extend its positive reach and effectiveness with extensive local knowledge and stakeholder engagement with the likes of City of Melbourne, Development Victoria, developers and many local businesses.”

“We wish Shane all the very best in his future endeavours and we’re sure he will continue to provide a huge amount of value with any direction he takes.” ●

Police charge man after death of woman in Docklands

CRIME

Homicide Squad detectives have charged a man with murder following the death of a woman in Docklands in December.

Police attended an address in Waterside Place about 1.30pm on

Friday, December 30 and located a deceased 51-year-old woman.

A 22-year-old Huntingdale man has been charged with murder, robbery, theft and obtain property by deception.

The man will appear at Melbourne Magistrates’ Court on May 5, 2023. ●

COLLINS SQUARE

All Day Dining at Collins Square

Home to a range of cafes, restaurants and bars, serving everything from simple breakfasts, wholesome lunches to tapas paired with your favourite after work tittle; everything you need is in one place.

Monday – Friday
7:00am – 7:00pm*

727 Collins Street, Melbourne

collinssquare.com.au

*Individual retailers' trading hours vary

“We’ll be back”: ATET vows to return after fire rips through nightclub

Continued from page 1.

was responsible for the blaze, however at the time of publication both Fire Safety Victoria and Victoria Police said the cause of the fire was yet to be determined.

ATET has attracted a significant level of noise complaints from locals since opening in late October, and tensions have remained high.

The unique floating nightclub — situated around 270 metres from the closest apartment towers at Yarra’s Edge and Victoria Harbour, and 300 metres to the north at NewQuay — is open until 1am on Friday and Saturday evenings.

Lord Mayor Sally Capp was contacted after the blaze, however, did not comment pending the ongoing police investigation.

In December, ATET was approved by the City of Melbourne to extend its operating hours to Sundays, and soon after the approval began trading across the weekend.

Its bid to trade until 1am on Sunday evenings, however, was cut back to 11pm.

More than 400 people objected to the proposal in what was another closely watched council decision, however Deputy Lord Mayor Nicholas Reece said enforcing an 11pm closing time was “the earliest possible time” it could restrict ATET’s operating hours under the local planning scheme.

The council did, however, announce a set of noise restriction it described as the “strictest” it has applied in recent times.

It installed a “noise limiter” device — operating 24 hours a day, seven days a week — that it said measured and limited the amount of noise coming from ATET against the noise thresholds required by the EPA.

If at any point the noise exceeded the thresholds, the noise limiter automatically turned down the volume from speakers and amplifiers at the venue.

The council also put in place a “belt and braces” measure that ensured the noise limiter would be located in a locked box and only be accessed by the qualified sound engineer who sets up the device.



▲ The fire captured by a local resident.

If the device is switched off or tampered with, the venue would “automatically be subject to fines”.

Cr Reece said the move was “the strictest and most onerous noise restrictions I’ve ever seen on a venue in Melbourne”.

Since the council decision in December and prior to the January 31 fire, it was unclear how effective the noise reduction methods had been.

Community backlash remained online, however the venue itself said negative sentiment had reduced throughout the weeks leading up to the January 31 fire.



▲ The aftermath. Photo: ATET.

The nightclub was originally proposed to operate at the western tip of North Wharf near the Bolte Bridge but remained based at a temporary location near Shed 2 while DV completed restoration works at the wharf’s end.

The move to the end of the wharf was hoped to provide affected residents with added reprieve from any ongoing noise impacts.

These works were not expected to be completed until mid-2023, a timeline the Deputy Lord Mayor said was too slow.

“I would have liked that process to have moved faster than it has,” he said in December. ●

“

I was quite shocked to see that. I didn’t hear any screaming or yelling. Even after they put out the fire, I could see the fireman’s torch lighting in the smoke. Eventually, after one hour it was quiet again.

”



David Schout

JOURNALIST

DAVID@HYPERLOCALNEWS.COM.AU

QUEEN VICTORIA MARKET

FRUIT, VEG & ORGANIC TRADERS FROM H&I SHEDS HAVE TEMPORARILY MOVED TO C&D SHEDS.

QUEEN VICTORIA MARKET

make it a market day

Home to the best fresh produce, great shopping, delicious food and coffee, fun events and friendly traders. Make it a market day at Queen Vic Market.

OPEN TUESDAY, THURSDAY, FRIDAY SATURDAY & SUNDAY

QVM.COM.AU

CORNER ELIZABETH & VICTORIA STREETS, MELBOURNE

Timber from Central Pier’s western tip to be repurposed on the *Alma Doepel*

WORDS BY *Sean Car*
HERITAGE

Timber from the western tip of the century-old Central Pier is being recycled to help with the ongoing restoration of one of Australia’s oldest surviving tall ships, the *Alma Doepel*.

The pier’s custodian Development Victoria undertook demolition of its western tip last year, which had been disconnected from the main structure of Central Pier since 2017.

Now, timber removed during the demolition is being put to good use here in Docklands with Development Victoria donating six pieces of ironbark to the restoration of the 119-year-old *Alma Doepel*, which is based at North Wharf.

Development Victoria’s Acting Group Head Precincts Niall Cunningham said it was fantastic to see parts of the western tip of Central Pier remain connected with the waters of Victoria Harbour.

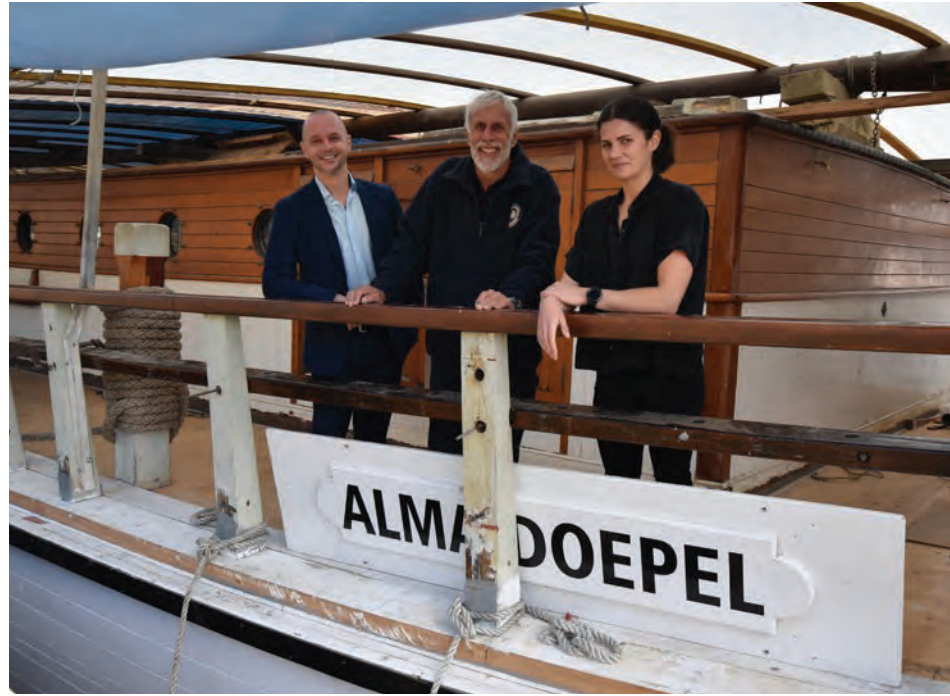
“We are proud to be a long-time supporter of this project to restore the historic *Alma Doepel*,” Mr Cunningham said.

“Development Victoria staff have also volunteered their time to help the restoration team as they work towards getting this fantastic ship back into operation.”

“Central Pier has been an important part of Docklands’ story and it’s great that its legacy can live on in the waters of Victoria Harbour through reusing some of its timber in the rebuild of this ship.”

Salvaged timbers have been recurred and laminated into the ship’s structure, which *Alma Doepel* restoration director Dr Peter Harris said had been used as timber supports for a deck-house, providing access to facilities below the ship’s deck.

Having previously received timber from other wharves around Docklands, including Australia Wharf, Dr Harris thanked Development



▲ L-R: Luke Sonnex (DV), Alma Doepel restoration director Dr Peter Harris and Joanna Jelli (DV).

Victoria for another generous contribution to the project, particularly amid timber supply issues within the boating industry.

“It’s a great thing to do,” Dr Harris told *Docklands News*.

“This historic timber is being built into the ship, valued and appreciated by the current and future generations of crews, trainees, guests and visitors,” Dr Harris said, adding that the ironbark received was in “very good condition” having been salvaged from a section of the pier that was below the western tip’s water-tight deck.

Development Victoria removed the western tip of Central Pier in August last year, having worked closely with Heritage Victoria as part of the process.

Once complete, the *Alma Doepel* will be used for youth sail training programs, which will be led by the Waypoint Foundation. ●

For more information:
almadoepel.com.au



Build-to-rent project at Yarra’s Edge approved

PLANNING

The Minister for Planning Sonya Kilkenny has given final approval for developer Samma Property Group’s 31-storey apartment building at the foot of the Bolte Bridge in Docklands to go ahead.

It comes after the plans for the 402-apartment tower were endorsed by City of Melbourne councillors in October last year, with the tower to be constructed on one of the few remaining development sites along Lorimer St.

In January, the Department of Energy, Environment and Climate Action (DEECA), formerly the Department of Environment, Land, Water and Planning (DELWP), gave the green light for the project to proceed.

The “striking” building, also set to include community recreation and open space areas, would “add to the city skyline” and provide greater diversity of local housing options, according to Deputy Lord Mayor Nicholas Reece.

Located directly next to Shed 21 on the banks of the Yarra River — a space currently occupied by One Padel Docklands — the council hoped ground-level community spaces would connect well with the heritage-listed sheds. ●



Plan ahead for summer works

! From Wednesday 11 January to Monday 27 February 2023



This summer, crews are completing a series of works across the West Gate Tunnel Project that affects how you’ll move to and from the city.

There are 24/7 lane, road and ramp closures in place across the network. These works are part of delivering a vital alternative to the West Gate Bridge.

Locations

- Footscray Road (continues to June)
- West Gate Freeway lanes
- Williamstown Road outbound entry ramp
- Williamstown Road interchange
- Hyde Street, Douglas Parade and Simcock Avenue

We understand that these closures are disruptive and thank you for your ongoing patience as we work as quickly and safely as possible to get the job done. Major delays are expected—please plan ahead.

In partnership with:
Transurban

Please note there may be other works happening across the network during this time. Visit bigbuild.vic.gov.au for more information.



Authorised by the Victorian Government, 1 Treasury Place, Melbourne

ADVERTISEMENT
Your City of Melbourne community update

TRANSFORMING MELBOURNE: CHECK-IN ON CAPITAL WORKS



The new play space on Southbank Boulevard

See your neighbourhood evolve before your eyes as we design and deliver about \$280 million of capital works.

Whether it's a city-shaping build or critical basics - like replacing 4800 sqm of worn-out footpaths with bluestone or installing security bollards - we're working to ensure Melbourne remains Australia's most liveable city.

One of our major projects is transforming Southbank Boulevard. So far we've delivered 22,000 sqm of public space, more than 400 new trees, 1.1 km of bike lanes and a new play space. We've also just started work on a new linear park in Dodds Street in January.

Meanwhile, at Australia Wharf, we've added new moorings to the marina, with waste, water and electrical connections for charter vessels, to support visitation and trade in Docklands.

Over recent months, we've also completed greening projects across the city - including on Provost and Little Provost streets in North Melbourne, and in the Greek Quarter in the CBD.

CAPITAL WORKS IN 2023



Deputy Lord Mayor Nicolas Reece with local kids at Fawkner Park

FAWKNER PARK OVAL

Keep an eye out for new turf, cricket wickets and irrigation on the southern sports field at Fawkner Park, a place 9000 locals enjoy each day. Works to enhance the Pasley Street North entrance are complete.



A new Food Hall is set to open soon at QVM

SOUTHBANK PROMENADE

Make your way along the widened promenade with new bluestone paving and native trees. Works outside Hamer Hall are complete, and the sections close to the Evan Walker Bridge will recommence this year.



We've given Southbank Promenade a makeover



The Greenline Project will transform the northern bank of the Birrarung

THE GREENLINE PROJECT

Imagine strolling from the MCG to Docklands along a vibrant riverside promenade of connected parklands and boardwalks. We're starting work on the first section of this major project this year.

MUNRO LIBRARY AND COMMUNITY HUB

Watch our flagship library with a makerspace and sound studios take shape alongside maternal health services, a community rooftop terrace, bookable spaces and more, opposite Queen Victoria Market.



Lord Mayor Sally Capp tours the new Munro Library site



QUEEN VICTORIA MARKET

Drop by to support traders at Melbourne's beloved market. Ten of the market's 12 heritage sheds have now been restored, with the final two - sheds H and I - starting works early this year. Plus, keep an eye out for the opening of the brand-new Food Hall.



Site works begin on Brens Pavilion

ROYAL PARK PAVILIONS

Community sport is booming, so we've upgraded the Western Pavilion into a spacious, eco-friendly facility with accessible change facilities for all.

Brens Pavilion is on track to be completed ahead of the winter sport season.

PRINCES BRIDGE

See this beloved gateway to the city restored in stages to its former glory with new paint, bluestone rejuvenation, repair of iron crests, lampposts and balustrades, rewiring and fresh roadway asphalt.

For more information, visit melbourne.vic.gov.au/cityprojects

Connect with us

- /cityofmelbourne
- @cityofmelbourne
- @cityofmelbourne



Goods Shed saved after two-tower proposal is refused

Continued from page 1.

substantial proportion of the shed,” the society’s heritage committee deputy chair Ian Wight said.

“The towers would have also overwhelmed and dominated those parts of the shed that remained open to the sky.”

Mr Wight noted just under 20 per cent of the Goods Shed was lost when the extension of Collins St bisected it, adding “this proposed development would have exacerbated this damage by demolishing the outer wings of the building”.

“This would have had a direct serious impact on a further 36 per cent of the building’s length thus raising the cumulative impact on the original building to 45 per cent of its length.

“The developers have proposed more active uses for the shed and this would indeed be welcome but not at the cost of such a significant loss of fabric and such a serious reduction in the quality of the building’s setting.”

Batman’s Hill resident and *Docklands News* columnist Tim Martin said the No 2 Goods Shed was the “most significant heritage structure left in Docklands”.

“Docklands has retained a disappointingly small number of heritage structures. That legacy will diminish even further when Central Pier is demolished,” he said.

“The Heritage Victoria decision is a good one, however from a more Batman’s Hill-centric point of view the knock-back will preserve the already limited amount of sunlight that makes its way down to the southern part of Village St.”

Mr Martin said the precinct was at risk of becoming a “claustrophobic, dark canyon”, thanks to the surrounding high rise office towers “which already dwarf and diminish the Goods Shed”.

The proposed towers would “simply seal the deal” by further blocking the sun, he said.

“Thanks to the Goods Shed, particularly the southern end, Village St has the potential to become a vibrant hub of activity if the shed could



be creatively activated with suitable tenants.”

The applicant, which Heritage Victoria said it could not disclose, may request a review of Heritage Victoria’s decision to refuse a permit.

Walker Corporation was contacted for comment but did not respond before deadline.

The Goods Shed is significant as the “largest and most architecturally elaborate 19th century railway goods building in Victoria”. It is originally measured 385 metres in length until the extension of Collins St in the early 2000s required the removal of nine central bays.

“The massive scale and grand style of the building demonstrates the importance of railways in the economic development and population growth of Victoria in the late nineteenth century,” according to the state’s heritage register. ●

“

Docklands has retained a disappointingly small number of heritage structures. That legacy will diminish even further when Central Pier is demolished.

”



ESCALA

NEWQUAY

READY
TO MOVE
IN NOW

Limited Residences Remaining

HOMES AT 2018 DEVELOPER PRICES
2 year 5% rent guarantee OR owners corporation fees paid for 2 years

Jeanne Yu — 0466 412 738 | Adam Gao — 0466 868 063

381 DOCKLANDS DRIVE, NEWQUAY
escalanewquay.com.au

DEVELOPED BY / **MAB**

DOCKLANDS HEALTH

SERVICES AVAILABLE:

- ▶ Physiotherapy
- ▶ Psychology
- ▶ Pilates
- ▶ Chiropractic
- ▶ Nutrition
- ▶ Kinesiology
- ▶ Massage
- ▶ Bowen Therapy
- ▶ Exercise Rehabilitation

Shop 4/860 Collins St, Docklands, 3008
(03) 9088 3228 | www.docklandshealth.com.au

BOOK ONLINE
DOCKLANDSHEALTH.COM.AU

What does the future hold for Docklands?

A new year, a new era for Docklands. A place that is vibrant and attractive for people to live and work. At least that's what is hoped.

WORDS BY *Brendan Rees*
PLANNING

The City of Melbourne provided scope for optimism late last year when it announced it was advocating for the redevelopment of Central Pier, delivery of the shopfront activation program, pushing Greenline, and creating an events partnership program.

It came on the back of the council hosting a Docklands Summit which recognised “the urgent need for action and generate enthusiasm and outcomes for the regeneration of Docklands”.

However, while many small businesses are keeping busy, the new year has continued to see Victoria Harbour struggle with several shops either empty or with “for lease” signs displayed on front windows.

One New Quay restaurant owner was seen mopping the floor without a single customer inside during what should be a busy lunchtime service in January. As one café co-owner put it, “It’s nothing like pre-COVID”.

“The corporates are not coming back the way they should,” Peter Mastro, co-owner of Saluministi café in Bourke St, said.

“You can do as many events as you want, it’s great for the five minutes when they’re on, but after that, what do you do?”

“Don’t get me wrong, we’re not closing the doors, we’re still busy,” Mr Mastro said, but added, “The long-term solution is to get people back to work.”

In November last year, the council said it would create “immediate harbour beautifications” and activations on Victoria Harbour,

neither of which have come to fruition at this stage.

Asked about these immediate projects, which are part of the council’s long list of priorities for the precinct, the council said the Docklands Summit “action and next steps” report “identified a number of priority projects for the precinct, subject to the allocation of funding and resources”.

“Council is currently considering a number of projects as part of its annual budget planning process and is advocating for additional funding and partnership opportunities with the Victorian Government and other key stakeholders,” it said.

It added, “Council is continuing to engage with the community and provide ongoing updates through the Docklands Neighbourhood Portal”.

According to Professor Andrew Butt of the RMIT University centre for urban research said their opportunities in Docklands that should be “utilised to try and maximum the draw of people”.

But he added the pandemic had demonstrated that “we need to have adaptable forms of new urban development”.

“We’ve got to face up to the fact that there’s different types of roles for cities and that means a better mix of housing forms and types to encourage a different mix of populations,” he said.

“The underlying issues are high rates of vacancy, investment driven property, and a lack of infrastructure to meet the needs of diverse community.”

“We’ve had a ferris wheel longer than we’ve had a school – there’s a problem with that.”

“The lesson from that should be planning for Docklands should start with focusing on things that make a community work and everything else will fall into place.”

But Cr Jamal Hakim argued differently, saying Docklands has “long been perceived as an isolated neighbourhood that lacks community”.

“I’ve always argued this is not true – Docklands is home to a growing community that is set to bloom,” he said last year. ●

Run for the Kids returns to Docklands in March

EVENTS

The 2023 *Herald Sun* / Transurban Run for the Kids is coming back to Docklands on Sunday, March 19 and local residents are advised to plan ahead, with road closures across Docklands throughout the day.

The iconic event continues to be one of the largest fundraisers for the annual Royal Children’s Hospital Good Friday Appeal, having hosted more than 400,000 participants and raised more than \$20.6 million for the Good Friday Appeal since its inception.

These vital funds are used to make a difference to the lives of Victoria’s sick and most vulnerable children.

Docklanders are encouraged to join the 30,000 participants supporting the cause by running or walking in the event or donating their time as an event volunteer.

On March 19, there will be several road closures in Docklands to manage participant and spectator movements throughout the event, with both long (14.5km) and short (4.6km) courses starting and finishing on Harbour Esplanade.

Organisers said that their objective was to close roads for the “shortest time possible”, focusing on “minimising disruption wherever possible”.

“There will be a significant impact on traffic in and around the course during the event, with road closures in place to ensure the safety of participants. There is no parking on the course itself during the road closure period. At all times emergency access and the movement of emergency vehicles takes priority,” a letter addressed to residents said.

NewQuay Promenade / Waterfront City: 1.30am to 12pm

The westbound carriageway of Footscray Road will be closed from 1:30am - 12 midday between Dudley St/Docklands Drive and the Bolte Bridge on-ramp. Pearl River Rd, and Little Docklands Drive will be closed at Footscray Rd



from 1.30am to 12pm. Waterfront Way will be closed at Footscray Rd from 7.30am to 10.30am.

There will be limited local access into and out of NewQuay/Waterfront City via Docklands Drive/Dudley St before 7.30am, between races from 9am – 9.20am and then after 10.30am.

There will be restricted access and delays into Docklands Drive via Footscray Rd when runners are crossing this intersection. Access will be facilitated by traffic controllers and Victoria Police. Please expect delays on the morning when exiting / entering Docklands Drive.

Docklands Precinct (Harbour Esplanade) and Victoria Harbour: 1.30am to 2.30pm

Harbour Esplanade will be closed from 1.30am until 2.30pm in both directions from Charles Grimes Bridge to Footscray Rd. From 1.30am there will be no access into Docklands and Victoria Harbour using Charles Grimes Bridge. The Charles Grimes Bridge closure will remain in place until 2.30pm. Victoria Harbour will be accessible for local traffic throughout, via Bourke St only. Traffic controllers will be on location to manage access requirements. Collins St will be closed in both directions between Navigation Drive and Spencer St.

For more information regarding the 2023 *Herald Sun* / Transurban Run for the Kids, please visit runforthekids.com.au. To contact the Race Office call 9292 2901 or email admin@r4k.com.au ●



haileybury.com.au

More than a dance dynamo.

Haileybury students are connected to their community and are always looking for ways to best serve them. Like Braya, who aside from having a strong love for dance and music — leading the School’s Pipes and Drums band — loves the fact she can help train Guide Dogs as part of her passion for Social Justice. She exemplifies all that we love about our students, spreading that goodness beyond the school grounds.



HAILEYBURY
DISCOVER MORE

Drivers to expect delays on Footscray Rd as major West Gate Tunnel Project works begin

WORDS BY *Brendan Rees*
TRANSPORT

Motorists are being urged to plan ahead as construction of a new elevated road above Footscray Rd enters a major phase of the West Gate Tunnel Project (WGTP).

The project will see the two-kilometre elevated road linked with new tunnels to Citylink and the CBD, helping cut travel times between Melbourne's west and the city by up to 20 minutes.

"While most of the construction of the elevated road has been done so far without road closures, the next phase involves construction of sections crossing over the citybound and outbound carriageways of the existing road beneath," a statement from the WGTP said.

"To keep drivers and workers safe while the construction takes place, there will be closures of Footscray Rd in one direction at a time until June."

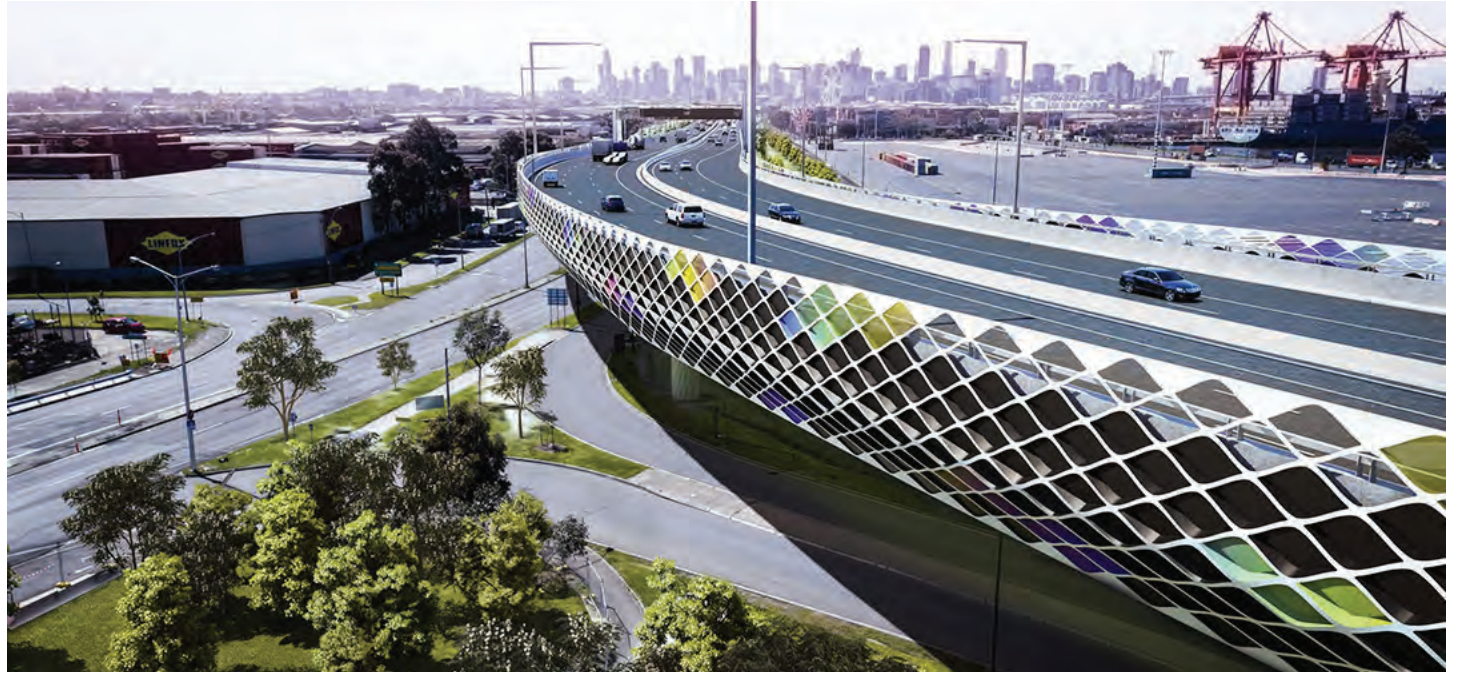
Footscray Rd citybound will be closed between Dock Link Rd and Appleton Dock Rd 24/7 until early April.

Drivers can expect to experience delays of up to 15 minutes while the works took place.

"To reduce delays, motorists should avoid Footscray Rd and use Dynon Rd instead," the WGTP said.

WGTP acting chief executive Peter Lellyett thanked drivers for their patience as the new tunnel connections to the city and CityLink got under way.

"The project's builder looked at a number of



▲ An artist's impression of the new elevated road.

different ways of constructing the road above the existing carriageways, but that would have meant an even longer disruption impact," he said.

"We'd like to thank drivers for their patience so far and ask that they take extra care as this

vital work continues."

Tunnel boring machines known as Bella and Vida – the largest in the Southern Hemisphere – are "powering ahead" with crews more than 70 per cent through the task of digging the 6.8km of inbound and outbound tunnels.

The project is set to "transform travel in Melbourne's west, delivering a vital alternative to the West Gate Bridge and removing more than 9000 trucks from residential streets".

A large crane has been building the road since September 2021. ●

Lady Cutler under investigation following crash in Victoria Harbour

WORDS BY *Brendan Rees*
MARITIME

Investigators will piece together the moments that led to the popular *Lady Cutler* showboat crashing in Victoria Harbour, which saw five people taken to hospital.

The Australian Maritime Safety Authority has launched an investigation into the January 15 incident with their main focus being the cause of the crash.

It is understood more than 200 passengers from a Somali community group were on board the iconic multi-level vessel at the time.

According to Victoria Police, it's

believed that "a boat struck a pole in the water" about 5.30pm.

Somali Community Inc. president Farah Warsame said he witnessed chaotic scenes when passengers disembarked from the boat near Central Pier as police and paramedics tended to the injured after the incident, which had left many in shock.

Mr Warsame, who was not on the boat at the time, said he knew many of the families involved.

He explained he was on the phone to one of the passengers as they were enjoying a Sunday afternoon as part of an annual get together until he heard a "big bang" on the other end of the call.

"I heard a big bang through the phone ... people were screaming a lot,"

he said.

When he rushed to the scene, he said he saw "people shaken up" and one child having difficulty breathing.

"I was told everybody on the boat fell," Mr Warsame said, which included two pregnant women who have since been told that both the health of themselves and their babies were okay.

"It was a solid hit, a very big one," he said.

"The families are finding out exactly what happened, they want to know what the cause of this accident was."

Ambulance Victoria confirmed those taken to hospital were a primary school-aged boy with back soreness, a woman in her 50s with upper body injuries, a woman in her

40s with upper body injuries, and a woman in her 30s with an arm injury.

The Melbourne Showboat, the company that operates the *Lady Cutler*, has since apologised to passengers but declined to provide comment to *Docklands News* while investigations into the incident continued.

While the cause of the incident is under investigation, in which WorkSafe has been notified, vision from *Nine News* showed a wooden pylon and a concrete wall damaged.

Docklands News can confirm that the captain of the boat had been suspended by the Australian Maritime Safety Authority and the *Lady Cutler* was currently halted from operations while investigations continued.

Mr Warsame said he had been inundated with phone calls not only from passengers but also the wider Somali community who were seeking answers.

"The families were telling me he [the captain] was distracted by something ... we don't know. It shouldn't be like that," he said.

The *Lady Cutler* entered service in 1968 as a former Sydney Harbour ferry and was decommissioned in 1991.

The vessel's current owner Jeff Gordon (who was not on the boat at the time of the incident) bought the *Lady Cutler* in 2007 before it underwent a refurbishment and began charter cruises, catering up to 350 passengers. ●

Glenn Harvey answers your legal questions

Q. My relationship with my spouse has broken down but how can I afford legal representation?

A. There are various options including obtaining legal finance payable at the end of your case when you receive your property settlement.

Please call to make an appointment for a FREE NO OBLIGATION 30-minute Family Law Clinic via video conferencing or telephone.

Pearce Webster Dugdales Working with individuals, families & business

Pearce Webster Dugdales Level 4, 379 Collins Street, Melbourne T 9614 5122 www.pearcewebster.com.au



Fresh face brings new energy to Melbourne for the Liberal Party

WORDS BY *Sean Car*
POLITICS

Evan Mulholland is Melbourne's new Member in the Upper House of the Victorian Parliament, and he represents a fresh voice for both his local constituents, as well as for the Victorian Liberal Party.

Mr Mulholland assumes one of five positions as Member for Northern Metropolitan, one of which was previously held by Reason Party leader Fiona Patten, who missed out on a third term in the seat following November's state election.

He's joined by Sheena Watt (Labor), Victorian Greens leader Samantha Ratnam, Enver Erdogan (Labor) and Adem Somyurek (Labour DLP).

While the Liberals suffered another landslide loss, Mr Mulholland's election to the Upper House, as well as the re-election of the party's new moderate leader John Pesutto in the seat of Hawthorn, signals a new era for the right side of politics in Victoria.

Representing the new emerging face within the party, Mr Mulholland, who has a background in community theatre and served as president of ARC Theatre Company, used his maiden speech to parliament in December to "fight for the arts".

"Community arts organisations are the lifeblood of communities, providing joy and meaningful social interaction to so many people, particularly young Victorians," he said, while slamming the amount of taxpayer dollars that are spent on sporting clubs compared to the arts.



"While the political class rolls out the pork barrel to sporting clubs, community arts organisations are not even getting the crumbs off the table."

"This is not to dismiss the important role that community sporting clubs play, but community arts organisations create a form of entertainment and community involvement that is a step beyond the extra bain-marie for the local cricket club. It is about time government policy reflected this."

Mr Mulholland has an extensive background working as a consultant in the technology sector, and served in numerous advisory and communications roles within government, including for former Liberal Ministers Matthew Guy and Mitch Fifield. He lives locally with his wife Brigid, son Teddy, and dachshund Gavroche.

As for local issues, he told *Docklands News* that he was keen to connect with as many within the community as possible, irrespective of the topic or his stance, as he seeks to be a voice for everyone in the seat of Northern Metropolitan. ●

Evan.Mulholland@parliament.vic.gov.au

Funding helps keep Docklands Neighbourhood House open

WORDS BY *Kaylah-Joelle Baker*
COMMUNITY

Docklands Neighbourhood House (DNH) has received some much-needed funding from the City of Melbourne to help it remain open until June.

The council has provided the pop-up community services provider with \$20,000 after councillors agreed to the funding at a meeting on December 13.

The motion, which was unanimously supported by councillors, was moved by Docklands resident Cr Jamal Hakim and followed continued calls for support from The Centre – the not-for-profit organisation behind DNH – during the second half of 2022.

While The Centre had sought \$50,000 to continue running its services, which was supported by a community-led petition, the council's injection of \$20,000 is enough to help see it through in Docklands until June.

In seconding the motion, Cr Dr Olivia Ball thanked The Centre's director Ariel Valent and his team for the work they had been doing in Docklands.

"The neighbourhood house movement is incredibly important to our community and the investment we put into it pays enormous dividends and achieves multiple of our policy objectives, because neighbourhood houses connect people, create communities, and reduce isolation," she said.

"They are diverse, multicultural, grassroots organisations where people can meet, organise, mobilise, solve problems, educate one another, meet their needs and plan for the future and for improving the world."

"It does all of these things, and these things need to happen in all of our communities, and, of course, in Docklands."

In discussing the importance of the funding, Cr Dr Ball also acknowledged that it was indeed a "stopgap measure".

While welcoming the funding, which will help DNH operate three days a week led by its "dedicated" community development officer Jason Butcher and community facilitator Dhanya Nair, Mr Valent said the team was already in talks about how it could survive long term.



"This funding is vital for the next six months, although it doesn't address the need to establish Docklands Neighbourhood House as an ongoing entity with a long-term future," Mr Valent said.

"We are in positive discussions with both the City of Melbourne, state government and other potential funders about the steps beyond the current timeframe of June."

"Thanks to all the members of the community that advocated for the continuation of Docklands Neighbourhood House. Your voices made a tangible difference, and we may be calling on you again in the coming months."

The community campaign has underscored the importance of DNH among Docklanders, and Mr Butcher said it would be focusing on expanding and building on its programs from last year.

While unable to host the "big marquee-style events", he said DNH was determined to focus on what it could build for, and with, the community.

"It's about building on those grassroots activities, because this is what led to the community coming forward and standing up for us, so we want to build on those and continue to give people that sense of co-ownership," he said.

"We are so grateful that there are community members advocating for us and it's a real practical demonstration that we are reaching the community and they are becoming involved." ●



Giraffe Early Learning Centre Docklands Enrol Now!

- **Flexible orientation period**, tailored to meet the unique needs of each individual child and family
- Beautiful and **large outdoor play areas** grouped by age.
- Nutritious meals freshly prepared by our **in-house chef**.
- **Family focused activities** throughout the year, celebrating many cultural festivals.
- **High staff to child ratio**.
- **Highly qualified team** of educational professionals dedicated to support your children's learning journey
- **Funded 3 and 4-year-old Kindergarten Program** operating **more than the standard 15 hours a week**.
- **Discounted Daily parking** at "The District"
- **Located** - First Floor "The District" Docklands under Melbourne Star Observation Wheel.

Opening hours: 7:15am to 6:15pm
Ph: 9670 0880
admin@giraffedocklands.com.au
www.giraffedocklands.com.au



Make your money work harder for you™

12 MONTH TERM ACCOUNT

5.65%
p.a.

current **variable** rate
after fees, reviewed monthly.



Contact our local Authorised Representative:

Daryl Hill
darylhill@dwhillar.com.au
0408 566 524



*The rate of return on your 12 Month Term Account is current at 1 January 2023. The rate of return is reviewed and determined monthly and may increase or decrease each month. The rate of return applicable for any given month is paid at the start of the following month. The rate of return is not guaranteed and is determined by the future revenue of the Credit Fund and may be lower than expected.

An investment in the Credit Fund is not a bank deposit, and investors risk losing some or all of their principal investment. Past performance is not a reliable indicator of future performance. **Withdrawal rights are subject to liquidity and may be delayed or suspended.** View our website for further information. La Trobe Financial Asset Management Limited ACN 007 332 363 Australian Financial Services Licence 222213 Australian Credit Licence 222213 is the responsible entity of the La Trobe Australian Credit Fund ARSN 088 178 321. It is important for you to consider the Product Disclosure Statement for the Credit Fund in deciding whether to invest, or to continue to invest, in the Credit Fund. You can read the PDS and the Target Market Determinations on our website or ask for a copy by calling us on 13 80 10.

For a full list of our Awards, please visit the Awards and Ratings page on our website. Daryl Hill is an Authorised Representative of La Trobe Financial Asset Management Limited. No financial product advice is given by La Trobe Financial or its Authorised Representatives.

“Floating wetlands” helps transform the Yarra River in Docklands

WORDS BY *Brendan Rees*
ENVIRONMENT

A series of “floating wetlands” are being launched in Docklands under a trial project to support a healthy ecosystem on the Yarra River.

Five large wetlands will be towed into the river in the coming weeks, consisting of hundreds of young, native Indigenous plants in what the City of Melbourne Lord Mayor Sally Capp said was a “another step forward for the Greenline Project and a beautiful way to return native plants and animals to the heart of our city”.

The wetlands will occupy Yarra’s Edge near Webb Bridge, the Turning Basin at Enterprize Park, and Victoria Harbour Promenade after the state government provided a \$700,000 grant to the council.

The trial, which will be rolled out from December, will see the wetlands made with a series of interlocking platforms, which will be placed on the water and anchored to the riverbed.

According to the City of Melbourne, the wetlands have been designed to encourage plant growth and support the return of native wildlife, with perching posts, drying banisters, basking areas, sunken planting and small ramps.

Cr Capp said the project would add to the “calming, natural environment of the Yarra River – Birrarung” and give visitors and residents “more reason to choose this precinct as a spot to unwind with co-workers, friends and family.”

“Hundreds of lush green plants will soon float on the river, allowing us to study the role of native wetlands while also helping to revitalise our most important waterway,” she said.

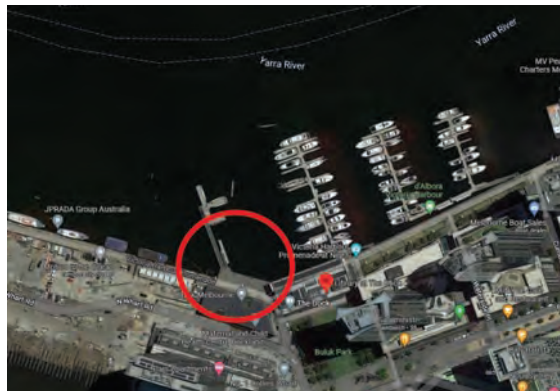
The young plants will be protected from damage and monitored during their establishment phase by the council.

The locations chosen along the lower reach of the Yarra River, were once home to a rich ecosystem of riparian vegetation and seasonal wetlands, according to the council, making it an important place for the Wurundjeri Woi-wurrung and the people of the broader Eastern Kulin nation.

Environment portfolio lead Cr Rohan Leppert said the wetlands were a “significant step forward” in helping to improve the river’s health and support the return of native birds and local wildlife.”



▲ Lord Mayor Sally Capp and Cr Rohan Leppert celebrate the launch of the first floating wetlands by planting new native plants. Photos: Ajay Viswanath.



“A healthy river system is vital for a growing city like Melbourne, and we need to encourage projects like this which protect and support our native ecosystems and biodiversity,” he said.

In addition to key insights about the role native wetlands play in supporting a healthy ecosystem, the council said the trial would provide opportunities to learn about their cultural importance and be used to inform future projects to improve urban waterways. ●



▲ A floating wetland at Yarra’s Edge.

A safe berth for Pacific blacks

WORDS BY *Rhonda Dredge*
ENVIRONMENT

The whole point of creating floating wetlands is to attract birdlife and nature lovers to a busy part of the river.

Docklands News can confirm that a number of species are already using the new wetlands at Yarra’s Edge.

When the wetlands were installed six weeks ago by the City of Melbourne as part of a \$40 million river upgrade locals were sceptical.

“This area stinks when there’s no rain. I thought they were purifying the water,” one said.

But once the birds began to appear a spirit of discovery began emerging down by the footbridge.

“When I take people out, I show them the wetlands,” said Charlotte Sterrett, the Yarra Riverkeeper, whose boat *The Puggle* is moored nearby.

“They’re in perfect spots out of the way where the water is quite still, places where birds will congregate.”

She said they were “like a hook to get people talking about the bigger issues”.

The Yarra Riverkeeper has been out in her boat around a dozen times during that period and has been keeping her own anecdotal record.

“I’ve seen cormorants sitting on the litter trap. It’s pretty sad. Now they get to sit in a nice natural place,” she said.

She’s seen swans, egrets and ducks and eventually hopes to see turtles as well.

“I haven’t seen any turtles or platypuses yet. It’s too saline and polluted.” It was these small sightings that



▲ A Pacific black takes up residence.

connected people with the riverine systems, she said, and the Yarra wetland concept is an Australian first, the idea coming from the UK.

“I hope to see more and more species. They’ll be making water life come back. We need facts sheets, so people know what they’re looking at.”

The wetlands have three levels, coir matting substrate, a sunken level, and planter boxes and trees and should become self-sustaining.

She said they were fenced off to prevent the young plants from being dug up by ducks.

The Pacific black duck that is nesting is likely to have entered from the water onto a landing platform before making its way to a safe berth. ●



Rhonda Dredge
JOURNALIST
R.DREDGE@HOTMAIL.COM

Herald Sun | Transurban
RUN for the KIDS
SUNDAY, MARCH 19, 2023

Run a great course for a great cause.
Lace up to support the 2023 Royal Children’s Hospital Good Friday Appeal and walk or run over the Bolte Bridge.

50% off entry for kids under 18

runforthekids.com.au

PROUDLY SUPPORTING
good Friday appeal
THE ROYAL CHILDREN’S HOSPITAL

Enter Now!



ADVERTISEMENT
Your City of Melbourne community update

CITY GARDENS GO WILD FOR WILDLIFE



Sign up for a free garden visit and become a champion for conservation

Melbourne is home to many iconic parks and gardens, from local reserves to vast open spaces like Birrarung Marr, Fitzroy Gardens and Princes Park. However, one open space people often forget about is in their own home.

Believe it or not you don't need a sprawling backyard in the suburbs to create a thriving natural habitat. Whether you live in a freestanding house, townhouse, or apartment, you can build your own natural space to promote and support local wildlife, right here in the city.

Gardens for Wildlife Melbourne is a free program that provides in-person or virtual walk throughs of people's home spaces with a trained gardening guide. Residents can receive expert advice and recommendations on how

they can improve their spaces for local wildlife and build a beautiful natural habitat in their home.

Garden volunteers will request some images of your home space and book in a virtual or in-person visit to learn more about your space and goals. After the visit, you'll receive a personalised garden report with advice on how you can work towards your goals.

You'll also receive a voucher for free native plants from program partners Westgate Biodiversity: Bili Nursery and Landcare, who can offer even further advice and inspiration on what native plants will suit your space and goals.

Become a champion for conservation and support local wildlife by signing up for a free garden visit at melbourne.vic.gov.au/gardensforwildlife

For Ann-Sofie, living in a 25th floor apartment has a lot of perks – especially the view. What was missing from Ann-Sofie's home though was a natural element.

When Ann-Sofie booked her virtual garden tour, she was looking for advice on what types of plants to incorporate on her balcony. With a personalised garden report, expert advice and a Bili Nursery voucher,

Ann-Sofie was able to transform her balcony from bland to beautiful, even attracting a few ladybugs and butterflies to her slice of heaven.

"It has definitely made our balcony much more homely having the plants, I'd love to do it again. I keep recommending it to everyone. Everyone should be doing this, it's great fun," Ann-Sofie said.

TIPS FOR CREATING A WILDLIFE-FRIENDLY GARDEN

- Planting banksia and grevilleas will help you attract large nectar-eating birds like rainbow lorikeets or red wattlebirds.
- Butterflies will only lay their eggs on specific plants, but adult butterflies will take nectar from lots of different types of flowers, native or exotic.
- You can attract smaller birds like the eastern spinebills by planting thick shrubs for them to hide from bigger birds, cats and dogs.
- If you're lucky you can attract blue-tongue lizards by growing native groundcover plants like nodding saltbush and ruby saltbush, which produce fruit the lizards love.
- Many small bird species like to build their nests using spider webs, fur and grass collected from all around. Keep an eye out for birds collecting nesting material and secure any plastics they might become tangled in.



KEEP IN TOUCH

To stay connected with all the latest news from the City of Melbourne, follow us on social media and subscribe to *Melbourne News* at news.melbourne.vic.gov.au

Connect with us

- /cityofmelbourne
- @cityofmelbourne
- @cityofmelbourne



ADVERTISEMENT
Your City of Melbourne community update



Artist's impression of green rooftops across the city

HAVE YOUR SAY ON NEW SUSTAINABLE BUILDING DESIGN STANDARDS

Melbourne is one of the most liveable cities in the world and we're working hard to ensure it stays that way for generations to come.

That's why at City of Melbourne we're taking bold action on climate change and delivering on our promises for 100 per cent renewable energy by 2030 and zero net emissions by 2040.

City of Melbourne is a global leader on climate action and sustainability. To ensure we reach our sustainability targets, we're proposing to introduce new sustainable building design standards for the majority of new buildings, major builds and additions that meet a certain size threshold.

We want to hear your thoughts on the proposed move to more sustainable building design in the municipality.

Buildings are our biggest polluters and account for 66 per cent of emissions in our municipality. This means we must change the way we build our homes and offices to address the climate and biodiversity emergency.

The new best-practice standards are proposed to be introduced into the Melbourne Planning Scheme under Amendment C376. The standards relate to environmentally sustainable design, energy, sustainable transport, heat minimisation, urban ecology, water management, and resource and recovery.

The Amendment also proposes the use of the Green Factor tool, an online green infrastructure assessment tool designed by City of Melbourne that helps developers optimise the design of green infrastructure.

New design standards will improve the way we live, work and get around the city by helping cool our homes and offices, help us deal with flooding events or heatwaves and make buildings cheaper to live in and operate.

Consultation opens soon. Follow participate.melbourne.vic.gov.au/amendment-c376 to stay informed.

IN BRIEF

EVERYONE IS WELCOME

At the City of Melbourne, we believe in bringing people together. Whether you're here to live or learn, to earn or enjoy, we're making our city inclusive and accessible for all. We're a city of possibility - whoever you are, wherever you've come from, everyone is welcome. Visit melbourne.vic.gov.au/community to learn more.

OUT AND ABOUT GUIDE

Are you an older person looking for free or low-cost activities, events, services and support in the City of Melbourne? Our 2023 Out and About guide is here to help. Pick up a copy today at your local library, neighbourhood centre or community hub. Or to download a copy visit melbourne.vic.gov.au/olderpeople

IMMUNISATION CHANGES

Our maternal and child health team provides holistic care for babies and parents. However, we no longer offer child immunisations during regular check-ups. To learn how to book these through one of our community immunisation sessions, visit melbourne.vic.gov.au/immunisation

FOOD AND GARDEN RECYCLING

More than 23,000 households are now participating in our food and garden organics recycling service, with 1900 tonnes of organics already collected. Visit melbourne.vic.gov.au/foodgardenwaste to see how you can put your organics to good use.

REPORT IT ONLINE

From graffiti to abandoned vehicles, you can report issues online around the clock. Get in touch from your smartphone when it suits you and we'll get on the case. Find out more at melbourne.vic.gov.au/contactus

IT'S COOL TO PREPARE FOR EXTREME HEAT

Summer has finally arrived, bringing picnics in parks, poolside lounging, rooftop cocktails and the hottest live music.

While we soak up the rays and explore the city, it's important to keep in mind the dangers of extreme heat, what you can do to prepare and how to stay cool when the temperature spikes.

By 2050, it's estimated Melbourne will experience 16 days above 35 degrees each year. This means more intense heat for longer periods.

At the City of Melbourne we're working to reducing the threat of extreme urban heat. We're already taking action through the Greenline Project, urban greening, introducing sustainable building guidelines and providing practical support.

Last year, we became the first city in Australasia to join the Adrienne Arsht-Rockefeller Foundation Resilience Center's City Champions for Heat Action - announcing our new Co-Chief Heat Officers, Tiffany Crawford and Krista Milne.

Our Chief Heat Officers champion City of Melbourne's heat-related preparedness, response and recovery actions, unify decision-makers and service providers, and raise awareness in the community.

But we can't do it alone - here are our top tips to help you beat the heat this summer:

Be prepared

Keep an eye out for Heat Alerts on our social media channels, set up a 'watch zone' on the Vic Emergency app or subscribe to the Department of Health's heat alerts and be aware of upcoming weather.

Make your home heat-ready by keeping curtains closed during the day, using an air conditioner or fan if you have one and opening windows when it's cool.

Find a cool place

If your home is too hot, try visiting an air-conditioned shopping centre, library, movie theatre, or jump in the pool at one of our recreation centres.

Find cool locations near you with our Cool Places map on our website and plan your journey with our Cool Routes map.

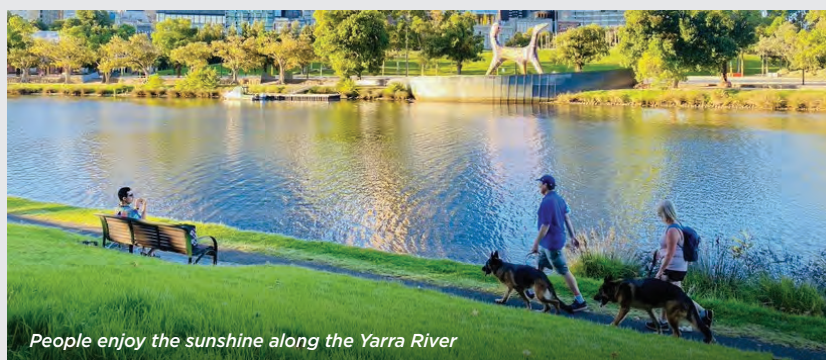
Stay Hydrated

Drinking water is vital during hot weather. Carry a water bottle with you and refill at one of our 60 hydration stations.

Look after each other - including your furry friends

Extreme heat can have severe effects on our most vulnerable, especially older people and young children. Check in regularly with your family, friends and neighbours, never leave children in cars and make sure your pets have plenty of water and a cool place to rest.

Find more tips at melbourne.vic.gov.au/heatwaves



People enjoy the sunshine along the Yarra River

Lifting of late-night liquor ban looms, as councillors call for review

WORDS BY *David Schout*
COUNCIL AFFAIRS

The City of Melbourne will conduct a review of its local planning policy in response to the state government's pledge to end a 13-year freeze on new late-night venues in Docklands and the CBD.

The urgent review will determine whether lifting the late-night ban could "create or exacerbate issues", and whether a fast-tracked study is required before the halfway point of 2023.

From July 1, an existing policy that prevents new licences in Docklands and the CBD from serving alcohol beyond 1am will be lifted, as part of a pre-election pledge from the state government.

One week prior to the November 26 election, Premier Daniel Andrews announced a \$34 million investment into Victoria's live music industry and vowed to "supercharge the creation of new venues" by removing the current ban.

The late-night liquor freeze, first proposed by the Brumby government in 2008, has been in place since 2010 as a response to alcohol-related harm and crime in inner-Melbourne.

Applicants wishing to trade beyond 1am require a ministerial exemption, which the minister can assign provided the venue is of "economic or cultural" importance to the state.

In recent years more exemptions have been granted (including to small and medium live music venues), and from July 1 no such exemption will be required.

Specific policies apply to venues in Docklands and the CBD (termed the Docklands Zone and Capital City Zone, respectively) because "the primary functions of [these areas] produce a range of noise-emitting uses, and a higher tolerance of noise is assumed of residents" compared with residential zones.

Lord Mayor Sally Capp said complaints about late-night venues was in her "top three" items of correspondence, in what she called "a natural tension between residents and businesses".

Specific policies apply to venues in Docklands and the CBD (termed the Docklands Zone and Capital City Zone, respectively) because "the primary functions of [these areas] produce a range of noise-emitting uses, and a higher tolerance of noise is assumed of residents" compared with residential zones.



Cr Capp said resident concerns were not just related to noise, but to how patrons entered and left venues and the impact on amenity.

"We want this to be what I would call a virtuous cycle where residents come in because they love the vibrancy of the city and the fact they can access amazing businesses ... but, of course, where businesses want to come in knowing that this is a place where they can attract lots of people to support [them]."

Shortly after the Labor government's



resounding re-election in late November, City of Melbourne councillors called for an urgent review of the city's Licensed Premises local planning policy.

If council management determine that amendments are required, it wants to partner with the state government for a formal review.

"I do think we have a good case to make to the new Planning Minister," Cr Rohan Leppert, who moved the motion, said at the final council meeting of 2022 on December 13.

"The agent of change to the regulatory framework here is the state, not the city. So, I would hope that there's a high level of goodwill to partner with the city in some research [in 2023] and, if the opinion of management when we come back to this matter again in March, is that it is worth pursuing changes to the planning framework, that we can find a pathway to do that efficiently and quickly and fairly."

President of CBD residents' group EastEnders Stan Capp expressed concern when asked how lifting the ban might impact locals.

"It is astounding that this ban, implemented by the Labor Government in 2008 in response to the need to address alcohol related harm in inner Melbourne, is now considered redundant," Dr Capp said.

"Motivating this 2008 decision was the increase in alcohol fuelled violence and anti-social behaviour on our streets, which is obviously a major concern to not just residents, but all users of our CBD."

Others, however, have argued that a 1am closing time for venues within a city that prides itself as the nation's "cultural capital" was regressive.

Whatever the case, the Premier's pre-election pledge appeared to pre-empt the findings of a review into the effectiveness of the freeze.

Casino, Gaming and Liquor Regulation Minister Melissa Horne had previously said that a review by the Department of Justice and Community Safety into its effectiveness would begin in late 2022 and be completed prior to the guidelines lapsing on June 30 this year. ●



Rothwell
Lawyers
Ph: 03 9329 3500

Suite 1518, 401 Docklands Drive,
DOCKLANDS VIC 3008

Tel: (03) 9329 3500
Mob: 0447 449 779
W: www.rothlaw.com.au

At Rothwell Lawyers we deliver exceptional legal advice, and always focus on achieving the best outcome for our clients.

AREAS OF PRACTICE

- Business Structuring
- Commercial Law Issues
- Conveyancing
- Debt Recovery and Alternative Dispute Resolution
- Family Law
- Insolvency Advice
- IVOs
- Wills, Estates and Probate

DENTIST



docklands DENTAL STUDIO
a different dental experience

Services:
Check-ups (exam, scale and clean, X-Ray); children's dentistry; teeth whitening; dental implants; root canal treatment; crown, bridge, veneer; dentures.

Mon-Fri 8:30-5pm (Thurs until 6pm) Sat: 9am-1pm
57 Merchant St, Docklands (opposite Victoria Harbour Medical Centre)
www.docklandsdentalstudio.com.au - ph 9021 9487 mob 0488 799 487

BOOK NOW ONLINE
docklandsdentalstudio.com.au



Zoom!
Teeth Whitening
Now Available





ACCREDITED

Now Accepting zip Money
a better way to pay

invisalign Start from just **\$12 a day**
The Clear Alternative to Braces

Our Dentists:

Dr Pia Oparkcharoen
Dr Aisling Cromie

Dr Cindy Liang
Dr Srividya Iyer

\$4,000

CASHBACK

WHEN YOU SWITCH YOUR HOME LOAN TO ANZ

Eligible ANZ home loans of \$250K+ with 80% or less LVR*

Contact your local Docklands Branch Manager
Jan Gilmore on mobile +61 481 916 749 or
by email: jan.gilmore@anz.com



ANZ
For Financial Wellbeings

*Offer can be withdrawn at any time. Limit of one cashback within any 12 month period. Offer is \$4,000 cashback for 80% LVR or less, \$2,000 cashback for LVR above 80%. Paid within 60 days to an eligible ANZ account. Offer terms: anz.com/cashback. Fees, charges, eligibility criteria apply.
© Australia and New Zealand Banking Group Limited (ANZ) 2019 ABN 11 005 357 522. Australian credit licence number 234527. ANZ's colour blue is a trade mark of ANZ. Item No. 98467 11.2022 WZ126392

Rates to rise as cap doubles, but “modest” increase frustrates

WORDS BY *David Schout*
COUNCIL AFFAIRS

City of Melbourne locals could pay up to 3.5 per cent more for their council rates next financial year, after the Victorian Government doubled the rate cap for 2023/24.

The cap, which limits the total amount a council can increase its rates each year, was set at 1.75 per cent this financial year, to “help ease cost of living pressures for Victorians”.

However, the government has opted to increase that figure from July 1.

Next year’s figure is still below the four per cent recommendation from the Essential Services Commission (ESC), in line with the Consumer Price Index (CPI).

“The rate cap for the next financial year takes into account higher inflation and the need to protect Victorians from uncontrolled rate hikes, while ensuring councils can continue to deliver vital community services,” local government minister Melissa Horne said.

“Each council is responsible for setting rates within the rate cap based on the needs of their community.”

The new figure means the average local property rate amount — should the City of Melbourne enact a rise in line with the cap in its next budget — will increase by 3.5 per cent.

The rate cap applies to a council’s total revenue and not individual properties, and an individual rate bill may increase or decrease by more, or less, than the cap amount.

However, there was some frustration from councils about what the Municipal Association of Victoria (MAV) described as a “modest” increase.

The City of Melbourne’s finance portfolio lead Cr Philip Le Liu told *Docklands News* that, against an underlying inflation of seven per cent across the economy, the cap was low.

“The rate cap set by the state government for the next financial year is well below the rate of inflation, which has seen the cost of providing services to the community rise significantly,” he said.

“Council will continue to monitor cost pressures and will consider rates, potential for cost constraints and other revenue measures as part of our annual budget planning process in the coming months.”

MAV president David Clark called for an independent review of the way in which the cap is allocated.

“Each year councils spend between 20 to 40 per cent of their budgets on new infrastructure, be that roads, aquatic facilities, streetscapes, or playgrounds and parks,” Cr Clark said. “In the current year costs for these works have escalated in the order of 35 per cent, something the rate cap doesn’t deal with, hence the need for the review ... councils are not complex, they raise funds from the community and spend it all back in the community. Less money over time means less services that we can provide.” ●

Faces of Docklands



AMY

I have lived here for about four years, and I love it because it is its own little suburb and community, but still a part of the city.



LUCAS

I like the marina, being close to the city, and having everything so close that we don’t need to venture far. In our free time, we walk our dog to the dog parks and go to the markets.



RAY

I have been living here for two years and I like that even though it is so close to the city it feels more separate. It feels nice to live here, and I enjoy going skateboarding or just walking around taking photos.



SHASHANK

I am travelling from India and have found Docklands to be a beautiful place, and very serene and peaceful. It’s the place you want to be if you want to do some soul-searching and relax.

“
What brings you to Docklands, and why do you like it?
”

Pet’s Corner

One of the cool kids on the block

“
Oli is a cool kid on the block.
”



Every day, as soon as it gets close to 5pm, the little Cavoodle can be seen strutting his way to the nearest park to meet with all his friends.

With his owner Si right by his side, the little two-year-old pup looks forward to this special part of his day, every single day.

“He loves socialising, and we have a lot of friends in the area,” Si said.

“We have a tight-knit group, and we always meet them at his favourite park in Docklands, Docklands Park.”

If there is one thing that Oli knows well, it’s

the parks of Docklands, and when not found at his favourite park, he can be seen at Buluk Park near Library at the Dock.

While popular among the other dogs within the area, Oli finds the greatest joy in catching up with his bestie.

“He has a best friend in the area, a Corgi named Coco,” Si said.

“They are best buds and see each other every day. So, he loves living in the area.” ●

Proudly representing the community in Docklands



Evan
MULHOLLAND MP
MEMBER FOR **NORTHERN METROPOLITAN REGION**

Unit 10, 2 Graystone Court Epping Vic 3076
03 9651 8242 | evan.mulholland@parliament.vic.gov.au
EvanMulholland.com.au | [EvanMulhollandMP](https://www.facebook.com/EvanMulhollandMP)
[@evmulholland](https://twitter.com/evmulholland)



Police share frustration as pet left in car in Docklands

WORDS BY *Kaylah-Joelle Baker*
ANIMAL WELFARE

Victoria Police has issued a statement on Facebook stressing the importance of not leaving pets and kids in cars on hot days, following an incident earlier this year in Docklands.

Posted on January 6, the statement read, "We can't believe we have to keep reminding people, but here we are again. STOP. LEAVING. PETS. AND. KIDS. IN. CARS. ON. HOT. DAYS."

According to Victoria Police, members from the Melbourne Bicycle Unit were out patrolling during the first week of January when they were called to a Docklands shopping complex to assist a dog locked inside a parked car.

"Riding up to the distressing scene, the dog was thrilled with their arrival. However, police were unable to locate the owner of the car," the statement read.

"After speaking with security staff, it came to light [that] the dog had been in the car for two hours with no water or food."

"Multiple attempts and announcements for the owner to return were made with no contact, leaving the officers with no choice."

Unable to locate the owner, the police, alongside the South Melbourne Fire Brigade, made the rescue. The owner was later slammed with a \$462 fine.

Speaking on the seriousness of the incident, Docklands resident and co-founder of PetWell Ayda Hornak said education was key to helping dog owners understand the consequences of such actions.

"This is a serious issue because people have very little understanding around the definition of hot. For example, if the outside temperature is only 21, after 10 minutes, the car temperature reaches 32, then 40 after 30 minutes," she said.

"On a day of 32, your dog is suffering in 43-degree heat in just 10 minutes, enough to kill them or create serious damage."

While some owners opt for cracking a window open to help combat the heat, Ms Hornak said this action was also dangerous.



▲ Photo: Victoria Police.

"Dogs can still become overheated and die even with the windows open," she said.

"They are especially vulnerable to overheating because they pant to stay cool, which raises the temperature inside of a car. In addition, it causes a great deal of stress to the dog, and there is also risk of seizures."

As summer continues, people are urged to think twice about the consequences and results of what could occur if not careful with their little ones.

A series of free local pet education workshops will see vet nurse Aurora Nicoles give a presentation on pet joint health at RES by

Mirvac (62 River Esplanade, Docklands) at 2pm on February 4.

PetWell has team up with RES by Mirvac in running community-based pet education sessions to share valuable tips around responsible pet ownership, pet care, behavioural training, health and nutrition tips for pets, as well as offering tips around myotherapy for pets and more. ●

For more information:
enquiries@petwell.au



Farewelling a blockbuster summer of *District Live*

WORDS BY *Jack Hayes*
EVENTS

Saturday, January 28 sadly saw the end of the Docklands crowd favourite *District Live: Open air series*.

Over four weekends across January, Docklands welcomed headline acts like Isaiah Firebrace, DJ Murray Cook (the original Red Wiggle), Daddy Cool and Mondo Rock's Ross Wilson and art-pop local, Montaigne.

The all-ages event series saw hordes flock to the District, providing a much need boost to the local economy. ●

For more events at the District, visit:



Espacio Salvaje: More than just a retail space

WORDS BY *Kaylah-Joelle Baker*
BUSINESS

Saint Mangos Lane is now home to collaborative retail store Espacio Salvaje, which has been spicing up the laneway with unique, Latin-inspired, ethical fashion garments since late last year.

Translating to "wild space" in Spanish, Espacio Salvaje is a co-founded project of owner and director of Latina Styles Karin Rosales, owner and director of Noelle Shoes Noelia Young, and operations and marketing director Xander James.

While a relatively new project, with both brands beginning their collaboration last year in Ms Rosales' smaller Fitzroy location, the new space in Docklands is inspiring them to think bigger and better.

"It's a journey, because it's a retail space but it's also a collaborative space, and we are also introducing smaller online businesses, who don't have a physical location, into the space," Mr James said.

"We also want to run some workshops to help empower start-ups and entrepreneurs, and to help build them up and give them some direction."

Ms Rosales first founded Latina Styles nearly five years ago after seeing a gap in the Australian market.

Put off by seeing racks of the same clothes that did little for curves and the natural body shapes of many women, she decided it was time for someone to showcase Latin culture through fashion.

"Latinas are all about looking good



and feeling good, and we like to dress up, stand out, and be wearing something different," Ms Rosales said.

Starting with swimwear and activewear, the store now contains a wide range of clothes for all occasions under the banner of multiple brands, with Ms Rosales' Latina Styles brand also in the process of expanding its collection of womenswear and menswear.

"I was inspired to give people a place with one-of-a-kind pieces. People can shop here and know they won't find another person wearing the same item at a party or the gym,"

she said. "Australian women also have curves like Latina women, and sometimes the clothes here don't really shape them or flatter their bodies, whereas we sell quality clothes in flattering styles that are made for every type of body."

In addition to providing clothes that flatter, the goal of all of the founders of Espacio Salvaje is for the clothes they sell, and brands they support, to be high quality and ethical.

On the partnership they have with big brands in Columbia, where clothes are produced by small designers,



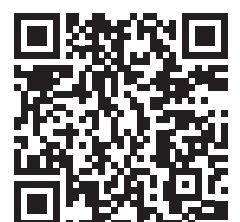
the moment, so it will be full of surprises and there will be new designers invited and a couple of guests who have Latina brands made in Australia or designed in Australia and locally-made in Latin America," Ms Rosales said.

"The models are also our real customers which is really unique, and it'll be an experience for them and for us. We want to be showing normal bodies in different sizes, shapes, and colours."

The event will also feature competitions and special prizes, drinks and nibbles, and tunes from "Docklands' number one and favourite DJ", who so happens to also be Espacio Salvaje's very own Mr James.

"We want it to just be an event that is fun, interactive, and cosy," Ms Rosales said. ●

To purchase your ticket for the runway, visit:



For more information:
[instagram.com/espaciosalvajeau/](https://www.instagram.com/espaciosalvajeau/)

CHAMBER UPDATE

A big year ahead in Docklands

WORDS BY *Daniel Hibberd*
PRESIDENT - DOCKLANDS CHAMBER OF COMMERCE

It's been a huge time of change for all businesses and the Docklands Chamber of Commerce (DCC) is no different, with recent news of the departure of a key member of our team. We wish our executive officer, Shane Wylie, a very sad farewell.

Executive officers like Shane certainly don't come around often, but we are aiming to have someone step into the role in the near future; more updates to follow

While we go through this period of renewal at the chamber and in our community, I wanted to give you some intel into how commerce is really tracking in Docklands and remind you of the strategic plan we told you about in 2021.

Firstly, some promising data from City of Melbourne is telling us that retail spending have increased 13 per cent from pre-COVID levels and we are seeing a positive increase in tourist-based foot traffic Friday through Sunday driven by interstate and rural travel.

Now for a brief recap of our five-year strategic plan to be continued into 2023:

- Focus on Docklands as the place to stay when visiting Melbourne.
- Promotion of small-scale consistent activations across the Docklands Precinct.
- Highlighting what Docklands has to offer with our "This is my Docklands" campaign.
- Permanent activation of Victoria Harbour.

With the DCC already the largest within the City of Melbourne Precincts Program and a reach of close to 250K across our social channels we are off to a great start for 2023, but we won't stop there and are looking to drive engagement to new heights.

If you are a local business and not currently a member, please reach out and join soon as this may not be able to offer memberships as low as \$50 for much longer.

As we look ahead to 2023, it's more important than ever that we as a Chamber, together with all Docklanders, present a united front so we can continue to realise the potential of our beautiful waterfront precinct. ●

For more information:
docklandsc.com.au

BUSINESS

Lucas Real Estate is nominated for nine prestigious industry awards

Lucas Real Estate, a leading independent agency specialising in the sale and property management for apartments in Docklands, Southbank, Melbourne, and surrounds, has been nominated for several awards recognising its success during the past year.

The Docklands-based real estate agency, located on Docklands Drive, has been nominated by The Australasian Real Estate Results Awards (ARERA) for the following awards ...

- Boutique Agency of the Year
 - Property Management Agency of the Year
 - Digital Excellence Agency of the Year
- Speaking on the nominations, Lucas Real Estate's director Baden Lucas said, "We are truly honoured to be recognised for our hard work and dedication to our clients."

"Our team is made of up highly skilled, conscientious, professionals who are dedicated to providing the best service to our clients. We have a special client base that trusts and values our expertise, and we are grateful for their ongoing support."

In addition, six of Lucas Real Estate's team members have been nominated for awards in service, client support, sales, and property

management.

The awards night will be held on February 20 in Sydney and the entire Lucas team looks forward to attending and celebrating together.

"We recognise the privilege we have in working in such a dynamic market and the special relationships we form with our clients," Mr Lucas said. "We are thrilled to be nominated for these awards and look forward to celebrating as a team at the awards night."

"We are committed to continuing to provide the highest level of service to our clients ... and have some fun along the way."

The Australasian Real Estate Results Awards – The ARERAs – are the Real Estate Results Networks (RERN) annual award ceremony to recognise, congratulate and celebrate the best real estate professionals from independent agencies across the RERN network. ●

For more information:
lucasre.com.au

MELBOURNE MARITIME HERITAGE NETWORK

Brighter days ahead for Docklands

The Melbourne Maritime Heritage Network (MMHN) is optimistic about the Docklands Precinct in 2023.



Firstly, our optimism, in part, rests upon the long-anticipated outcome of the Development Victoria community consultation process about Central Pier, which is due, as we understand it, early in the new year.

MMHN staunchly argues that the Docklands community deserves compensation for the loss of Central Pier in the form of an inspiring iconic structure. MMHN board members visiting the Queenscliff Maritime Museum during January came upon an exciting and cost-effective "model" – a structure which may be appropriate on a floating pier once Central Pier is demolished.

It is the new Queenscliff Ferry Terminal building. MMHN finds this Australian design exciting – low-rise, suitable for the salt-water environment and its dimensions deliver the amount of space that the MMHN proposes for the Maritime Experience Centre.

The state government and its agency Development Victoria may well find this newly constructed Queenscliff Ferry Terminal an interesting and expedient "option", with known costs and the design work completed – "ticks a lot of boxes"?

Secondly, we feel optimism igniting the recent and rare coverage in the popular press describing Melbourne's attractive waterways – that means the entire Docklands Precinct – pointing out that waterways deserve greater recognition and investment.

MMHN has until now been the "lone voice" advocating to government that ignoring Melbourne's marvellous waterways, is simply a waste of a prime public asset. Journalist Jon Faine writes of his recent "exploration" by ferry of Melbourne's waterways, "Yarra ferry trip tells a tale of Melbourne's development, some

grand, some awful". See:



Thirdly, we are optimistic about this article which also highlights the marvellous role ferry transportation can play on Melbourne's waterways, if only it was equitably funded by the state government. Privately-operated ferry services would grow if awarded the same public subsidies as other private public transport e.g. trams and buses. MMHN will continue its advocacy to the new Andrews Government Ministry in 2023.

Imaginative investment in Melbourne's maritime assets makes good economic sense in 2023. ●



Jackie Watts
CHAIR OF MELBOURNE MARITIME HERITAGE NETWORK
JACKIEWATTS@NETSPACE.NET.AU

CRITIC

Evocative of a gaslight style

WORDS BY *Rhonda Dredge*

There are some very moving moments in the first exhibition of photographs at Magnet Gallery as we come back from the summer break.

David Wayman is the gallery's best-selling photographer and he's joined this time by his son Tom.

Tom has a similar aesthetic but a more dramatic feel for the night sky.

He has a lot of fun with a full night exposure, so the stars form a pinkish spiral over a modest little country cottage.

"When you have an exposure that long you get a lot of ambient light," curator Michael Silver said.

Tom's prints are on matt archival paper, accentuating the subtleties of his colour palette in the print.

David's compositions can also be moody abstractions, but he is at his best with the subjects he loves.

His dog features in two, one trudging across the water after an illness and the other, seemingly drinking out of a cloudy sky.

He's brilliant at capturing silhouettes against the sky but in this the water acts as a mediating presence.

"This is his third exhibition here," Silver said. "He's always out hunting, always looking. He drives somewhere and goes to the bush. He goes all over the place."

Photographers don't need to put impressions into words. It's more about the timing and the persistence.



▲ *David Wayman*

There are fishermen and cyclists captured in picturesque locations that could be called romantic.

A black and white print of a fisherman seen heading out onto the pier from the vantage point of a Victorian gazebo is evocative of a gaslight style.

Caught in Light, David and Tom Wayman, Magnet Gallery, until February 25. ●



Payment on collection only
Review of your terms and conditions for free when you use our services

Suite 1518, 401 Docklands Drive,
DOCKLANDS VIC 3008

Tel: (03) 9329 4455
Mob: 0447 449 779

BUSINESS

Trielle: where the riverside meets luxury

“

Docklands is set to welcome a new \$350 million luxury residential tower, with renowned developer, Mirvac, revealing Trielle; the tallest building with the most abundant amenity to be introduced to the leading property group's thriving Yarra's Edge community in Melbourne.

”

Combining riverside rarity with timeless luxury, Trielle will be the crowning jewel at Yarra's Edge, commanding a striking view across the CBD and beyond, defining the sought-after north-facing riverbank.

With architecture and interiors by Mirvac's award-winning in-house design team, Trielle is poised to redefine luxury living.

An architectural marvel on Melbourne's skyline, the spectacular exterior will represent a diamond, featuring distinctive, faceted glazing to reflect both the sky and shimmering river.

Just metres from the waterfront and positioned on the Collins St axis, the 45-level tower features sophisticated design and unparalleled amenity.

Focused on celebrating time, life's most precious commodity, Trielle residents will have access to a dedicated concierge to tend to their needs with meticulous attention to detail, giving back precious time in the day to spend how they wish.

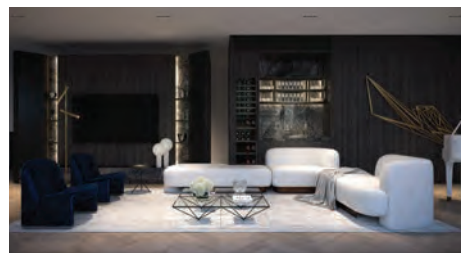
Self-care will soar to new heights at Trielle. The Oasis is a verdant urban rainforest with a running stream through the centre to provide an instant dose of transportive calm and relieve.



Featuring a Scandinavian-inspired wellness club, a 25-metre lap pool, hot outdoor magnesium pool, an infrared sauna, and cold-pooling and treatment rooms, residents can enjoy the Oasis' restorative benefits on any given day.

Whether it's relaxing, entertaining or connecting, the community-oriented spaces at Trielle will allow future residents to "focus" with a biblioteca-style library and work pods; "connect" with a full-time concierge and Saletta Business Lounge, "revel" with a piano bar, chef's table and wine cellar, games room and cocktail bar, teppanyaki barbecue and golf simulator.

"We've designed Trielle to celebrate time, leisure and adventure. The design hinges on the waterfront aspect of Trielle, its view of the



city and its commanding presence on the city's skyline. It will be a luxurious base for residents to explore Melbourne's vibrant cafes, laneways and the iconic flagships of Collins Street's Paris end," Mirvac design director, Michael Wiener said.

Featuring one-, two-, three- and four-bedroom residences, a collection of sub-penthouses and the black and white diamond penthouses, the 191 generously sized apartments have been

crafted with meticulous attention to deliver a vision of luxury.

Each residence is imbued with an innate sense of home, boasting impressive ceiling heights and finishes that are hotel-like in their quality.

Trielle residents will have access to Mirvac's established inner-city waterfront community, including Marina YE at their doorstep.

Future Trielle residents will soon benefit from wider Fishermans Bend area plans. Described as a "city within a park", it is set to be a hub of architectural excellence, sustainability, innovation, business, nature and community in years to come, making it one of Melbourne's most exciting, richly layered destinations.

Sitting as the central figure of Melbourne's waterfront, surrounded by Fishermans Bend, Port Phillip Bay and the Yarra River, Trielle offers a Melbourne location like no other, combining the CBD's liveliness, the river and the sky.

To be one of the first to experience the Trielle Display Galleria, please contact Janet Walker 0466 440 863 or janet.walker@mirvac.com. ●

For more information:
trielle.mirvac.com

What is brilliant teaching?

It might be hard to exactly define brilliant teaching, but it's very easy to spot.

In some of the best classrooms in the country, brilliant teaching underpins high-quality learning. It inspires the youngest, brightest minds and it sparks curiosity and embeds the concept of lifelong learning.

But what is the essence of quality teaching? How can brilliant teaching be defined and described?

For Haileybury CEO/Principal, Derek Scott, putting the key elements of brilliant teaching in to a short summary isn't possible. However, it's easy to recognise brilliant teaching in action when he sees it.

"The very phrase 'brilliant' teaching elevates teaching to go beyond more than 'good' teaching. However, what transforms good to brilliant is different for different people and it varies in different classrooms. That's actually a plus because we don't want all teachers and classrooms to be exactly the same," Mr Scott said.

"However, I do think that one key characteristic of a brilliant teacher is curiosity. I interview every staff member at their final interview stage, and I always look for curiosity and intellect because when you have bright, intelligent children and young people in your classrooms, you want bright, curious intelligent teachers in front of them."

As well as curiosity, Mr Scott highlights



engagement, passion and the ability to build relationships as essential ingredients in the brilliant teaching mix.

Deputy Principal (Teaching & Learning) Anna Sever agreed that a number of factors combined to create brilliant teaching.

"In some ways, brilliant teaching is intangible.

It is a culture of high expectations, hard work and collaboration underpinned by our philosophy that 'every student matters every day,'" she said.

"It's a desire to always be better and to find the one percenters and marginal gains that will allow students to be successful. Always

being restless, always asking why, and seeing the world through the lens of excellence make a teacher 'brilliant.'"

Since 2011, Haileybury has offered a bespoke coaching program to focus on continuous teaching improvement. Coaches are available at each campus to support teachers in professional areas ranging from time management and student feedback to questioning skills and instructional management.

The school has also created an innovative *Brilliant Teaching* series where teachers have access to world renowned experts and where lessons of Haileybury's very best teachers are recorded and placed on a purpose-built Canvas course. Teaching insights are shared and discussed, and educators can observe their colleagues in the classroom and give and receive feedback.

"When you build a strong collaborative culture, you build a capacity for teachers to leverage off each other and to never accept they've reached the final point in their own development. We want our teachers to reflect that continual improvement that we seek from our students," Mr Scott said.

When all these elements and concepts come together, students, teachers and school communities can enjoy the many benefits that brilliant teaching delivers. ●

For more information:
haileybury.com.au

Wet n' wild comes to high-rise Melbourne



Unfortunately, we are well into storm season in Australia, and the east coast is being battered with its usual fair share of heavy rains and high winds.



Dealing with the aftermath of a storm is difficult for everyone affected. It is particularly difficult for owners' corporations (OCs) because they must also deal with upset lot owners, dispossessed tenants, and damage caused to common property. But where exactly does an OC's obligations start and end?

The most important thing that an OC should have in place is the right coverage under their insurance policy. It is a statutory requirement to be insured for the full replacement value of all common property assets (unless you are in a two-lot scheme). In addition, you should ensure that your insurance policy covers damage such as storm damage, to the greatest practicable extent, and covers the cost of emergency or crisis accommodation for displaced residents, to the greatest possible extent.

In the aftermath of a storm, an OC needs to be proactive to ascertain the extent of any and all damage to the common property. Ideally, its manager or a consultant should come on-site as soon as possible to assess damage, and if a resident reports any damage, the OC should act promptly to investigate and make repairs.



This assumes, of course, that the damage is done to common property, not lot property. In Victoria, the boundaries within a lot that delineate the point between common property and lot property can vary widely. Much depends on

the notations recorded on the header sheet of the registered plan of subdivision as there are no hard and fast principles of interpretation.

Often the notations read like gibberish to the ordinary person and state matters such as

“location of boundaries defined by buildings – interior face – all boundaries.” What this seemingly innocuous phrase means is that items such as tiles and waterproof membranes, and the underside of ceilings will belong to the lot owner, not the OC.

This matters a great deal when there is storm damage to these types of items, as it might well mean that lot owners might be required to claim any damage from a storm to these items under their own home and contents policy. If their insurer does not provide this type of coverage, then the owner can be left high and dry.

In recognition of this situation, some OCs elect to ensure that their policy of insurance for damage covers all parts of the building (including lot property) but may have a rule in place to require owners to pay for the excess under any claims made to the insurer. Committee members ought to discuss these types of situations each year when the policy is up for renewal.

The legislation states that OCs have a strict duty to repair and maintain the common property in good condition. Where an OC fails to meet these obligations, they may be liable for any property damage caused as a result, as well as pure economic loss if that loss is reasonably foreseeable.

In other words, when a storm damages common property and that damage causes consequential damage or loss to a lot, the OC may be responsible. If a body corporate does not act promptly, it places itself at risk of being sued. That is why being proactive and acting promptly is so important. ●



Tom Bacon

TOM BACON IS THE PRINCIPAL LAWYER OF STRATA TITLE LAWYERS.

TOM@STRATATITLELAWYERS.COM.AU

DOCKLANDS REPRESENTATIVE GROUP

Docklands night-time economy

You can't operate a night-time economy without night-time staff – and that includes council officials and other authorities.

WORDS BY Docklands Representative Group

While some Docklanders have only recently been impacted by new night-time venues, many others have been raising issues about noise and late-night antisocial behaviour for much longer.

And, unfortunately, this is going to be a tricky issue to tackle as it involves multiple parties and a range of longstanding issues.

Let's start with Melbourne's support of a “vibrant night-time economy”. First thing to note is the emphasis upon “economy” as opposed to, say, a night-time society or community. And allied to this, the second thing to note is *who* is involved in shaping these directions. As stated on the City of Melbourne's website:

“The City of Melbourne's Night Time Economy Advisory Committee brings together leaders from the hospitality, arts and entertainment industries, government representatives and members of academia.”

No mention of residents, nor any other community representatives who might raise issues about local liveability and wellbeing.

Atop of this is the current governance model for Docklands, namely the *Docklands Act 1991*. This Act effectively excludes Docklands from processes that many other Victorians take for granted. This issue was raised at a recent Future Melbourne Committee Meeting by Docklands

Representative Group (DRG) chairperson, Ben Ball, wherein he questioned the relevance of an Act created at a time when there were no residents in Docklands.

While Cr Rohan Leppert has identified a new governance model as a priority issue for Docklands' future wellbeing, current residents are left facing the reality of sleepless nights and a growth in antisocial behaviour.

What can be done now?

Already a proliferation of petitions, new FB groups and surveys have appeared, all trying to show the impact upon residents. Their message is to lodge complaints with the various authorities, principally the City of Melbourne, EPA and Victoria Police.

In addition to this, the DRG is directly advocating that responsible staff – council and state government – need to be more on-hand and hands-on in the night-time economy.

That is, in addition to a complaints mechanism, the DRG believes that a more embedded approach is needed, one where relevant staff become part of the night time economy and are available to undertake their duties when events are actually occurring.

For instance, staff need to be routinely on-hand to meet party boats to “encourage” the quiet dispersal of patrons. As party boat docking and dispersal of patrons is now a regular event, it needs to be treated as such. Similarly, staff need to proactively – and as part of their usual duties – be on-hand to monitor venues when they are operating.

In short, a gam to 5pm Monday to Friday model is no longer suitable. The City of Melbourne and relevant authorities need to adapt their work models to cater for the type of night-time economy they say they wish to promote. ●

THE MOST EXCLUSIVE ESCORT AGENCY

Paramour

OF COLLINS STREET

- Dinner Companions
- Social Escorts
- Sensual Ladies

VIP

CITY CENTRE

Melbourne's exclusive entertainment service.

Highly recommended for our interstate and overseas visitors

Paramour's GRAND RE-OPENING

Be with the best girls in Melbourne give us a call to pre-organise for opening day due to overwhelming demand

CITY CENTRE GIRLS

9654 6011

CBD - 5 MINUTES TO YOUR DOOR

たくさんの美しい女性 日本語を話します

We have survived COVID-19 AND ARE STILL HERE TO HAVE BEAUTIFUL LADIES PRIVATELY TO YOUR DOOR 24/7

HISTORY

Heritage win for rail history

Built in 1889, the Number 2 Goods Shed in Docklands, near Southern Cross Station, is one of the most significant buildings in Victoria's rail and industrial history.

WORDS BY *Rosemary Cameron*
ROYAL HISTORICAL SOCIETY OF VICTORIA

It was built in the Melbourne Yard, the original rail freight terminal in Victoria which ran from Flinders St to Moonee Ponds Creek. When it was built, it was the longest building in Australia (385 metres, with 26 arched doors on the east side and 28 on the west side) and was in continuous use until 1977. It was also the busiest goods shed employing up to a staggering 1500 men by the 1890s.

Melbourne's population grew by a massive 67 per cent in the 1880s to reach around 482,000. Never since has Melbourne grown so fast. This is when Melbourne started to dominate its countryside as railways not only brought exports through Melbourne but also enabled Melbourne's factories to undercut country town small businesses, from foundries to cordial makers.

During this decade cable trams replaced horse trams, telephones made their appearance and suburban railways and tramlines fanned out, tying new suburbs to the city. What marked Melbourne in this decade was a spirit of progress and optimism. Home ownership reached 45 per cent, the highest rate in Australia and indeed in the world. During this decade, in 1880



and 1888, Melbourne's grand new Exhibition Building hosted two momentous exhibitions, both demonstrating Melbourne's development as the rival of Europe's great cities.

The prosaically named, Number 2 Goods Shed, is actually a grand polychromatic brick building which clearly illustrates the dominant role played by Victoria's railways in the economic development of the State in the late 19th and early 20th centuries. The huge scale and grandiose style of the sheds is a reflection of those boom decades, the 1870s and 1880s, and

the consequent increase in goods traffic. The building housed three rail tracks with loading platforms for horse-drawn vehicles accessed through the arched doors on both sides of the building.

Melbourne Yard in Docklands remained the major transit point for goods in Victoria through to the 1960s when the introduction of containerisation forced a move to more modern, less-congested rail facilities and to the more efficient door-to-door road transport. The final death knell for the Melbourne Yard



What marked Melbourne in this decade was a spirit of progress and optimism.



was the Docklands and stadium developments in the 1990s which removed most of the sidings and goods sheds, leaving the Number 2 Goods Shed as a lonely reminder of a former glorious age of rail supremacy.

Despite its listing on the Victorian Heritage Register and its National Trust classification, in the early 2000s it was cut in half by the extension of Collins St into Docklands. To allow for the extension, nine bays in the middle of the Goods Shed were demolished, and since then it has existed in two parts, known as Goods Shed North and Goods Shed South. Despite the loss of its middle section, the Number 2 Goods Shed is still the largest and most architecturally elaborate 19th century railway building in Victoria.

In 2022 a developer applied to Heritage Victoria for a permit to demolish the two existing modern office buildings on Collins St and build two larger office towers in their place. This would have involved some demolition, dismantling and reconstruction of Goods Shed North and Goods Shed South to allow for the construction of the new towers, and to accommodate the larger floor plates proposed for the two new towers.

Fortunately, in January 2023, the application for redevelopment was refused by Heritage Victoria. The Royal Historical Society of Victoria applauds this decision by Heritage Victoria. ●

WE LIVE HERE

Other councils take the lead

Hello Melbourne City Council – what action will you be taking to improve the lives of Melbourne apartment residents?

Several Melbourne councils with simmering short-stay issues are taking matters into their own hands, frustrated by interminable inertia at the state level.

Now City of Port Phillip, the municipality that includes the tourist mecca of St Kilda, is planning to implement regulations like those adopted by other councils covering the regions of Mornington, Frankston and Yarra Ranges. One of the most fundamental reforms is a registration system – which, if nothing else, will at least provide empirical data on the short stay industry juggernaut.

In its magazine last month, Melbourne City Council congratulated itself on its 2023 agenda while quietly forecasting that the city's population will increase 100 per cent by 2041.

Such a density-doubling trajectory can only be achieved with near commensurate growth in apartment dwelling – hardly a surprise.

With their crystal ball polished so wonderfully, what is the council doing to make sure the mega-population can be accommodated while enriching the community fabric of the city?

We need to know what the council is going to do about planning issues that include short-stays and the impact on residents of continual, intensive building development.

We are following up with the Future Melbourne Committee this month.

The state of the State

We hope the New Minister for Planning, Sonya Kilkenny, will have a broader view of her portfolio than her predecessor, Richard Wynne, who always seemed to be on the side of the developers, evading requests for balanced discussion on issues affecting residential buildings.

Although Melissa Horne retained her seat at the 2022 election, Danny Pearson has taken over as the new Minister for Consumer Affairs. We look forward to continuing the regular dialogue that we had with the Consumer Affairs office under Ms Horne.

We have learned that the proposed review of the *Owners' Corporations Act 2021* will cover both acts that were incorporated into the *Owners' Corporations Act*:

- *Owners Corporation (Short Stay Accommodation) Act 2018*
- *Owners Corporations and Other Acts Amendment Act 2021 No 4 of 2021*

The timetable has now been promised sometime between 2023 and 2027 – first slated for 2021! Victorians deserve a more definitive timetable for this review.

In its original 2014 issues paper, the government expressly excluded short-stay accommodation from the review of the *Owners' Corporation Act* – alleging "planning issues" as the reason. Have these self-declared issues been resolved to allow a simultaneous review of both acts? We certainly hope so, because the current legislation is far from workable. ●

DOCKLANDS NEWS

Wish your inbox was more local?

Well we have good news for you!

Scan the QR so you can stay Hyperlocal on the eNews!



HYPERLOCAL NEWS



Barbara Francis & Rus Littleton
CAMPAIGN@WELIVEHERE.NET
LEARN MORE AT WELIVEHERE.NET



What's on: February 2023

FEBRUARY 19
ESPACIO SALVAJE CATWALK
 Latina Styles & Noelle handmade shoes. You are invited to Catwalk! Showcasing the latest stylish ethical fashion trends for 2023! Scan the QR code to secure your tickets - don't miss out!
 6pm to 8:30pm
 24 St Mangos Ln

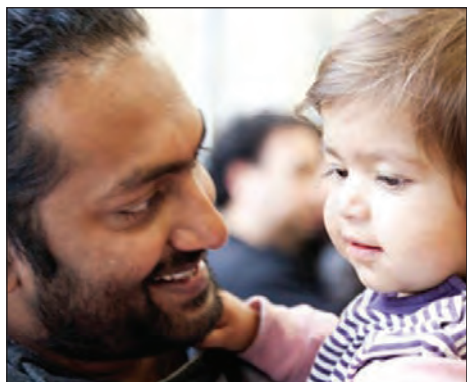


FEBRUARY 19
DRAGON BOAT FESTIVAL
 This Lunar New Year, join in the Dragon Boat Racing Festival on Harbour Esplanade and watch 200-metre dragon boat racing.
Harbour Esplanade
 Victoria Harbour Promenade

UNTIL NOVEMBER 27
LIBRARY CINEMA
 Come along for contemporary, classic and documentary films on the big screen. Feel free to stay for snacks and a chat afterwards.
 This is a free event - no bookings required.
Library at The Dock
 107 Victoria Harbour Promenade

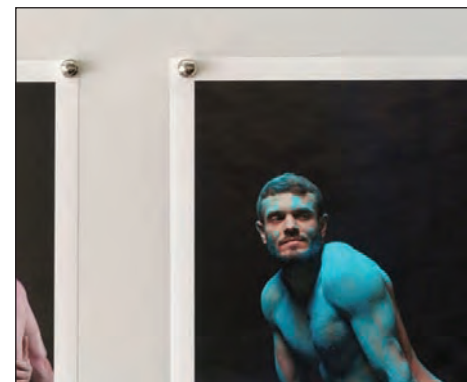


UNTIL DECEMBER 31
MAKERS MARKET AT THE DISTRICT
 Enjoy live entertainment and creative, colourful market stalls showcasing art, craft, jewelry, fashion, homewares, gifts, and delicious homemade and homegrown produce.
The District (Outside of H&M)
 440 Docklands Dr



FEBRUARY 9 – DECEMBER 7
PRESCHOOL STORYTIME
 Share the wonder of books with your preschooler at this storytime session with stories, songs, rhymes and activities. Programs run during school terms and stop during school holidays. Ages 3 to 5 years; no bookings necessary.
Library at The Dock
 107 Victoria Harbour Promenade

UNTIL MARCH 12
MEN/STILL/SHOOTING
 Men/Still/Shooting is an exhibition of photographs of men in their natural state. Please follow directional instructions on the website to locate the gallery. Part of Midsumma Festival.
XYZ Photo Gallery
 312/757 Bourke St



Open 24/7
 genuine kinky escorts
 5 mins to your door
 CBD location

We survived COVID-19
RE-OPENED
 Fully vaxxed girls to your door now!!

Top Class of Collins Street
(03) 9654 6351
 contact@topclassofcollinsstreet.com.au

10 YEARS ON

Looking back at Docklands News - 10 Years On

FEBRUARY 2013 | ISSUE 83 |

DOCKLANDS NEWS

Gong for our Kevin

“

For Kevin Sheehan, being awarded an Order of Australia medal was cause to stop and reflect on his 40-year career in Aussie Rules.

”

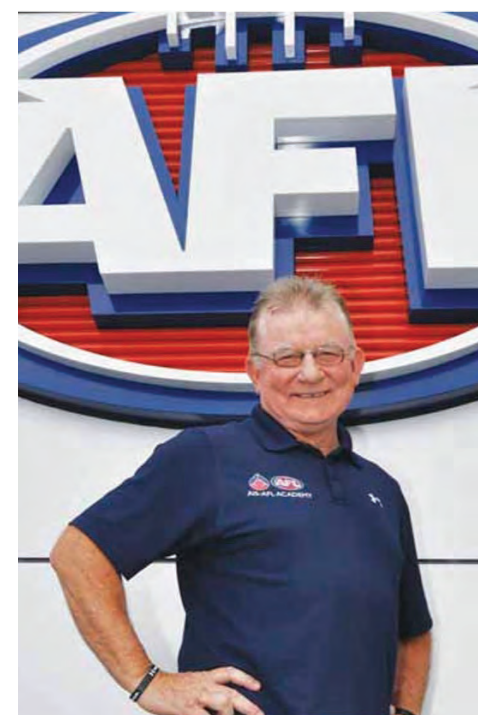
Kevin was honoured with the award on Australia Day, in recognition of his service to the sport of Australian Rules football.

Kevin's footy career started on field, playing for Geelong, but his biggest contribution to the sport has been 37 years as the national and international talent manager, helping countless young players pursue football careers.

Kevin currently works in this role at AFL House in Docklands.

Kevin said being awarded the medal was quite a surprise.

“You don't aspire for anything like this when working in footy,” he said.



Kevin celebrated his achievement in Wellington, New Zealand where he was travelling with the Australian under-17 team.

“It was a very special moment because we were representing our country and our code overseas,” Kevin said.

Quiz



1. What is the name of the floating barge causing issues for some local residents?
2. What is the hottest planet in our solar system?
3. What is mageirocophobia?
4. A series of 'floating wetlands' have been launched in Docklands under a trial project to support a healthy ecosystem on the Yarra River. Where are they?
5. Do hurricanes form over land or sea?
6. Which sports brand was founded in Sydney in 1914?
7. What was Jordan Peele's (pictured) third feature film as a director?
8. How many countries does the United States share a land border with?
9. Included as part of the Docklands Public Art Walk, where will you find *Silence* By Adrian Mauriks?
10. Nameless no more, what is the name of the baby zebra at Yarra's Edge?
11. The City of Melbourne's is on track to record more than how many billion dollars in new development applications this year?
12. With over 200 passengers on board, which notable Docklands charter vessel ran itself into trouble in January?

QUIZ SOLUTIONS

1. A.T.F.T 2. Venus 3. Fear of cooking (between Berth and Cargo) 10. Clyde (Canada) 9. New Quay Promenade 6. Speedo 7. *Nope* 8. Two (Mexico and 11. \$2.5 billion 12. The *Lady Cutler*

5x5

No. 020

Insert the missing letters to make 10 words – five reading across the grid and five reading down.

W		T		R
	M		N	
D		T		O
	G		E	
D		E		S

SOLUTIONS

WATER, AMINO, DITTO, EGRET, DOERS

PUZZLES AND PAGINATION
©PAGEMASTERS PTY LTD
PAGEMASTERS.COM

Feb, 2023

Sudoku

No. 020

Fill in the blank cells using the numbers from 1 to 9. Each number can only appear once in each row, column and 3x3 block

EASY

				9				
7			9	1	3			
5	3	9		2		4	8	
		9	6	8	7			
	7						6	
		3	7	1	4			
1	8		3			4	5	9
		6	8	4				7
		2						

HARD

7						8		4
	1	2		4				
5			7	3				
	8		1	3				
1	7					5	2	
		4		9		8		
			3	2				5
		7		5		3		
4	5							9

SOLUTIONS

EASY

3	8	9	7	5	2	6	4	7
7	1	2	6	4	8	3	5	9
6	5	4	9	3	7	8	1	2
2	6	5	1	4	3	8	9	7
1	8	3	2	7	5	6	4	9
4	2	1	8	6	9	5	3	7
8	7	3	5	2	1	4	9	6
9	4	6	8	7	3	2	5	1
5	2	7	3	6	8	4	1	9
6	9	4	5	2	1	7	8	3
7	4	8	9	1	3	6	5	2
2	6	3	7	8	9	5	4	1

HARD

6	2	7	1	9	8	5	3	4
8	3	9	5	4	7	1	6	2
5	1	4	6	2	3	7	9	8
7	8	1	2	6	9	4	5	3
2	5	6	8	3	4	7	9	1
9	4	3	7	1	5	2	8	6
1	9	2	3	7	6	8	5	4
3	7	5	2	1	6	4	9	8
4	8	6	9	5	3	2	7	1
7	2	1	5	8	4	9	6	3
5	6	8	9	3	7	1	2	4
2	4	9	8	6	5	3	7	1

Wordfind

Theme: Birds

The leftover letters will spell out a secret message.

G	N	U	M	N	H	B	N	S	I	E
L	N	E	A	A	U	C	R	E	L	R
W	D	I	K	Z	L	E	N	A	S	E
O	V	R	Z	C	H	L	G	I	H	T
A	O	A	U	T	I	N	A	C	F	S
D	R	K	A	M	I	H	I	R	E	O
D	O	E	C	T	S	R	C	L	D	O
U	F	V	H	U	T	T	G	E	A	R
C	F	G	E	S	C	A	I	W	O	W
K	I	L	O	P	E	L	I	C	A	N
N	P	A	R	A	K	E	E	T	K	D

- | | |
|-----------|-------------|
| AVIAN | FINCH |
| BUZZARD | MALLARD |
| CHICKEN | NEST |
| CUCKOO | NIGHTINGALE |
| DAW | OSTRICH |
| DOVE | OWL |
| DRUMSTICK | PARAKEET |
| DUCK | PELICAN |
| EAGLE | ROOSTER |
| FEATHERS | |

Secret message: Guinea fowl

Crossword

No. 020

ACROSS

- 1 Bones; frames (9)
- 6 Pursues (5)
- 9 Regimen (7)
- 10 Involve (7)
- 11 Pleases (9)
- 13 Rested (5)
- 14 Devalued (7)
- 16 Indoor shoe (7)
- 18 North American country (1.1.1)
- 19 Lattice (7)
- 20 Challenge (7)
- 21 Opposite of day (5)
- 23 Delayed (9)
- 26 Starch extracted from cassava (7)
- 27 Roads (7)
- 28 Lads (5)
- 29 Watches; attends (9)

DOWN

- 1 Rashes; infections (5)
- 2 Impartial (9)
- 3 Changes (5)
- 4 Knight-hood (1.1.1)
- 5 Slides (5)
- 6 Withdrawal; separation (9)
- 7 Evade (5)
- 8 Suffered from the heat (9)
- 12 River flowing from Tibet to the Arabian Sea (5)
- 14 Exploded (9)
- 15 Fixes; liquids (9)
- 16 Bags (5)
- 17 Most beautiful (9)
- 22 Opened wide (5)
- 23 Opposite of tails (5)
- 24 Fortune telling cards (5)
- 25 Work tables (5)
- 27 Prosecute (3)

SOLUTION

S	E	L	I	V	I	C	O	E	D	S	S	E	D	N	D
K	S	O	N	G	N	E	E								
S	I	E	B	E	R	I	S	V	O	I	D	I	V		
E	I	V	I	S	E	I	V								
D	E	I	V	I	S	E	H	I	H	O	I	N			
I	N	K	N	O											
G	M	E	L	I	N	O	S	S	I	N	T	E	L	L	
H	E	R	E	O	V	S	O	L	E						
D	E	D	I	L	S										
E	R	E	S	N											
I	J	E	T	S	S	E	I	S	I	V	I	S			
L	D	E													
D	E	D	E												
W	K	E	R	K											
S	E	E	K	S											

Codeword

No. 020

9	3	18	22	6	24	18	3	24		J	10	12
7		11		9		2		23		16		23
10	11	10	19	23		10	13	13	10	B	2	23
12		18				4		23		3		1
17	23	7	3	22	2	23		12	3	2	23	4
23				6		12		15		23		
18	16	5	5	2	4		17	3	1	23	6	18
		7		2		21		15				5
13	2	10	20	23		16	15	3	2	3	18	23
12		24		10		3				12		22
6	22	15	10	8	6	24		4	23	10	18	15
18		6		16		22		6		21		12
15	16	11		23	14	23	22	16	15	3	17	23

SOLUTIONS

J	B	X	L	V	U	S	Z	K	C	E	N	N	J	B
20	22	23	18	11	17	14	13	12	10	16	15	19	11	10
13	12	11	10	9	8	7	6	5	4	3	2	1	1	1
15	14	13	12	11	10	9	8	7	6	5	4	3	2	1

1	14
2	15
3	16
4	17
5	18
6	19
7	20
8	21
9	22
10	23
11	24
12	25
13	26

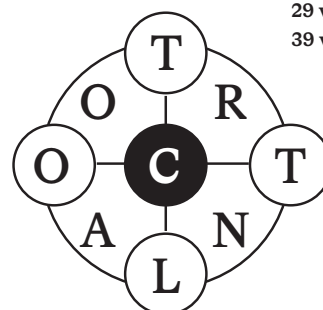
9-Letter

No. 020

Today's Focus:

- 19 words: Good
- 29 words: Very good
- 39 words: Excellent

Using the nine letters in the grid, how many words of four letters or more can you list? The centre letter must be included and each letter may only be used once. No colloquial or foreign words. No capitalised nouns, apostrophes or plural words ending in "s".



Reference: Collins Concise English Dictionary

SOLUTIONS

acton, action, actor, cant, canno, cartonn, cart, cart, carton, cartonn, clan, clo, coal, coolant, cool, corral, corn, corona, cotta, cotton, croom, locator, loco, octal, octant, coar, cola, colon, colorant, colt, contort, contra, CONTRALTO, control, cool, tacon, tact, talc, tract

Business Directory

Accounting

rubliix
business accountants

Maximising your profits by
minimising your tax

PH 9603 0066
www.rubliixbusinessaccountants.com.au

www.paramour.com.au



(03)9654 6011

Melbourne's Finest Escorts
can be at your door in 5min
as we're located in the CBD

Pharmacy

victoria harbour pharmacy+news

Hours: Mon to Fri 8am-8pm & Sat 9am-1pm
 ☒ Pharmacy ☒ Giftware
 ☒ Magazines & Papers ☒ Tattoos
 ☒ Same day dry cleaning

66 Merchant St. Docklands (opposite Safeway)
 Ph: 03 9629 9922 Fax: 03 9629 9933
 Email: vicharbourpharmacy@nufnet.com.au

Fast-paced yet
considerate,
nuanced yet distinct.

Redefining the
Melbourne buying
and selling experience.

88 Lorimer Street,
Docklands 3008
falsomelbourne.com.au
t. 03 9052 4665

falso melbourne

Childcare



giraffe
Early Learning Centre

Ph: 9670 0880
 admin@giraffedocklands.com.au
 www.giraffedocklands.com.au

Fitness

JUSTINTIME JUSTINTIME

All trainers are University Degree
qualified and we come to you!

www.justintimeworkplacehealth.com
 www.justintimept.com

southern cross pharmacy

Hours: Monday to Friday 7am-8pm
 Saturday 10am-6pm

Southern Cross Station
 Shop C8, 99 Spencer St. Docklands
 Ph: 03 9600 0294 Fax: 03 9600 0594
 Email: southerncrosspharmacy@nufnet.com.au

TRIELLE.MIRVAC.COM



Community



Docklands
Neighbourhood House
provides social and
educational
opportunities for the
community of
Docklands.

A: 4 Wharf St,
Docklands
P: 9328 1126
W: thecentre.com.au

Health & Beauty

DOCKLANDS HEALTH

SERVICES:
 ▶ Physiotherapy ▶ Massage ▶ Psychology
 ▶ Chiropractic ▶ Pilates ▶ Podiatry

HOURS
 Mon-Fri 8am-7pm | Sat 8am-12pm

4/860 Collins St, Docklands, 3008
 (03) 9088 3228 www.docklandshhealth.com.au

Politician

ADAM BANDT

FEDERAL MEMBER FOR MELBOURNE

142 Johnston Street, Fitzroy
 (03) 9417 0772
 adam.bandt.mp@aph.gov.au

Shopping

COLLINS SQUARE

collinssquare.com.au/whats-on

Dental

docklands DENTAL STUDIO

NOW OPEN
SATURDAYS

Mon-Fri 8:30-5pm
 (Tue, Thu until 6pm)
 Sat: 8:30-1pm

57 Merchant St, Docklands
 T (03) 9021 9487 | mob 0488 799 487
 (opposite Victoria Harbour Medical Centre)
 www.docklandsdentalstudio.com.au

www.victoriaharbourmedicalcentre.com.au

VICTORIA HARBOUR MEDICAL CENTRE

Victoria Harbour Medical Centre Telephone 9629 1414
 2-3/850 Collins Street Docklands 3008 After Hours 13 74 25
 Entry via Merchant St Fax 9629 4265
 Hours: Mon-Fri 8am-6pm, Sat 9am-12 noon

Proudly representing the
community in Docklands

Evan MULHOLLAND MP

LIBERAL PARTY
 MORTIMER MEEDEPOLYAN RIDING

evan.mulholland@parliament.vic.gov.au

COLLINS PLACE

35 Collins St, Melbourne collinsplace.com.au

Legal Advice

PWD Pearce Webster Dugdales

Working with
individuals,
families & business.

Tel: 9614 5122 Fax: 9614 2964
 www.pearcewebster.com.au

ELLEN SANDELL

STATE MP FOR MELBOURNE

(03) 9328 4637 office@ellensandell.com 146 Peel Street North Melbourne VIC 3051

QUEEN VICTORIA MARKET

For the best fresh produce, gourmet food
and specialty shopping,
you can't beat Queen Vic Market.

Open Tuesday, Thursday, Friday
 Saturday & Sunday
 with plenty of affordable parking.

QVM.COM.AU

Escorts

Erotic Elderly 965032936

Mature
Sophisticated
Affectionate
Discreet
Genuine
Affordable Escorts
paramour.com.au

5 mins to your door!

Rothwell Lawyers

Suite 191, 491 Docklands Drive,
DOCKLANDS VIC 3008
 Tel: (03) 9359 3500
 Mob: 0477 448 779
 W: www.rothlaw.com.au

At Rothwell Lawyers we deliver exceptional legal
advice, and always focus on achieving the best
outcome for our clients.

AREAS OF PRACTICE

- Business Structuring
- Commercial Law Issues
- Conveyancing
- Debt Recovery and Alternative Dispute Resolution
- Family Law
- Insolvency Advice
- IVOCs
- Wills, Estates and Probate

Real Estate

CityResidential
REAL ESTATE PTY LTD

T: 03 9001 1333
 818 Bourke Street,
 Docklands
 VIC 3008

SALES Glenn Donnelly m: 0419 998 235
 LEASING Lina D'Ambrosio m: 0430 929 851

www.cityresidentialbourkestreet.com.au
 SELLING | LEASING | PROPERTY MANAGEMENT

Transport

Port Phillip Ferries



DOCKLANDS NEWS

Talk to Docklands News owner Sean Car
 T 0433 1920 484 E sean@hyperlocalnews.com.au
 about how to customise your campaign to our audience every month.

HAVE YOU MET YOUR NEW LOCALS

Stop Paying Too Much!!
**CHEMIST
WAREHOUSE**
**DISCOUNT
CHEMIST**



fantastic variety

**MARKET
LANE**

The District Docklands